

Powering the EV future

How we're supporting you

At Endeavour Energy we're working towards a smarter, more flexible and integrated modern grid. As part of our commitment to supporting the electrification of transport, we're planning to roll out 6,000 pole-mounted EV chargers*, enable 296,000 electric vehicles across our network by 2035, and manage a total EV charging load of 1,976 GWh, enough electricity to power 300,000 homes for a year.

Benefits for you

- **Lower running costs:** EVs can save you thousands on fuel and maintenance.
- **Smarter energy use:** Charge when electricity is cheapest and use your EV battery to power your home during peak times.
- **Convenience:** More charging options across our network.
- **A greener future:** Reduce your carbon footprint and help create cleaner air.

How we're supporting the uptake of EVs

- **Smart technology:** We're monitoring EV charging using smart analytics to manage and optimise the electrical network.
- **Flexible connections:** We're looking into new pricing options and connection types that can adjust based on usage.
- **Community batteries:** We're investing in shared batteries to store renewable energy and support local charging needs.
- **Future-proofing:** Preparing the network for hundreds of thousands of EVs without impacting grid reliability.

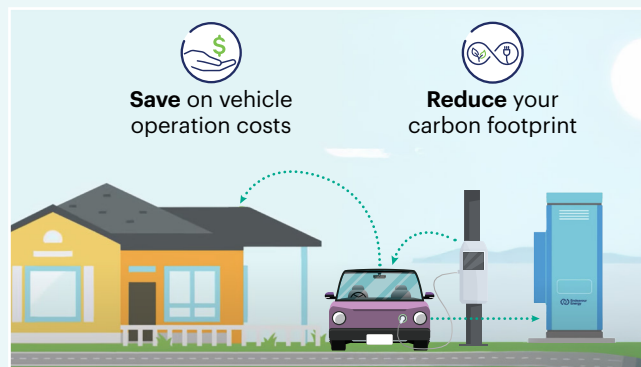


Our initiatives

- Installing 47 kerbside pole mount chargers.
- Preparing a submission to NSW Government to install 5000 kerbside pole chargers.
- Supporting bi-directional charger trials.
- Developed an online EV knowledge hub to help customers make the switch.

Innovating for tomorrow

We're supportive in connecting compliant bi-directional charging. This is where energy can flow both ways, from the grid to your car and from your car back to your home or the grid. This could help you save money by powering your home during peak times or outages. We're also running targeted trials with retail partners to explore new technologies.



* Subject to regulatory changes.

Powering the EV future

Charging at home or work

- Most home and small workplace chargers can be installed by a licensed electrician.
- Before you install, check your home's electricity capacity.
- Chargers above 7 – 10 kW or those needing a new circuit may require an application to Endeavour Energy. Any installation of a level 2 charger will require a licenced electrician to reassess your maximum demand, which may require an upgrade of your connection. A level 2 charger has its own plug which is different to a regular power point at home and is much faster to charge.
- If you have solar on your roof, make sure the setting allows your EV charger to prioritise your solar energy before drawing from the grid. You can further optimise your energy management with a home battery.



Useful resources

Resource	User	Application	Description
Connect online portal	EV owners / EV charging hosts	Connection applications and bi-directional charger registrations	Endeavour Energy's online connection portal lets customers apply for EV charger upgrades or register a bi-directional charger.
EVCharge.Online portal	EV owners	Finding public EV charging	Live national EV charger map with real-time stats.
PlugShare	EV owners	Finding public EV charging	Global online charger map with live updates.
Chargefox, Evie, NRMA, Ampol AmpCharge	EV owners	Finding public EV charging	National operators with individual applications.
NSW Government Electric Vehicle Fast Charging Master Plan	EV owners / EV charging hosts	Identifying ideal fast-charging sites	Portal maps ideal EV charging sites across regional towns, highways and metro NSW.

Find out more

We're here to help you make the switch to electric. Visit our EV knowledge centre and connections portal for tips and tools.

- **EV knowledge centre:** <https://www.endeavourenergy.com.au/modern-grid/electric-vehicles/installing-an-ev-charging-station>
- **Connections portal:** <https://www.endeavourenergy.com.au/connections>
- **Endeavour Energy standards portal (for Accredited Service Providers):** <https://www.endeavourenergy.com.au/asp/webengine/au/com/ee/asp/login/Login>



Help in your
language

Visit:

www.endeavourenergy.com.au/modern-grid/electric-vehicles/ev-knowledge-centre

and chose your language or **Phone: 131 450**



**Endeavour
Energy**

**POWER
together**

[endeavourenergy.com.au](https://www.endeavourenergy.com.au)