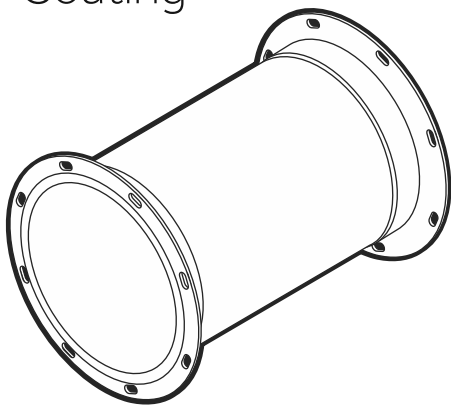


exential

Exhaust & Abatement

Fab-Tech PermaShield™

Stainless Steel Corrosive
Fume Exhaust System With
PermaShield Fluoropolymer
Barrier Coating



Order (or Quote) No.:

Round Duct Order Cover Sheet Catalog 04/24.3

Company:

Address:

City / State / ZIP Code

Project Manager:

Phone No.:

Order Date:

Email:

Delivery Date:

Ship To:

Street / Road:

City / State / ZIP Code

Project Name:

Phone No.:

Indicate system pressure class:

-6"WG(-1493Pa) or -10"WG(-2488Pa)
-14"WG(-3484Pa) or -18"WG(-4479Pa)

Other pressure:

Indicate substrate:

304SS or 316SS

Indicate hardware:

Grade 5 / 18-8 (304SS) / 316SS / EZ / None (custom rings)

480 Hercules Drive, Colchester, VT 05446
T: 802-655-8800 F: 802-655-8804
www.exentec.net/products/process-exhaust

**DUCT &
FITTINGS**

Straight Duct _____	3
Straight Duct with Test Port / Drain _____	4
Straight Duct with Straight Tap _____	5
Straight Duct with Conical Tap _____	6
Straight Duct with Shoe Tap _____	7
Straight Duct with Lateral Tap _____	8
Straight Duct with Multiple Taps Spec Sheet _____	9
Straight Duct with Multiple Taps _____	10
Gored Elbows _____	11
Reducers _____	12
Offsets _____	13
End Caps _____	14
Mesh End Caps _____	15
Concentric Round to Rectangular Transition _____	16
Custom Fitting _____	17

**CONTROL
DEVICES**

Damper Actuator Worksheet _____	18
4" - 12" (101.6 - 304.8) Wafer Isolation Damper _____	19
2" & 3" (50.8 - 76.2) EZ Damper & EZ Blastgate _____	20
4" - 14" (101.6 - 355.6) Industrial Isolation Damper _____	21
4" - 14" (101.6 - 355.6) Industrial Isolation Short Damper _____	22
16" - 48" (406.4 - 1219.2) High Value Heavy Duty Industrial Damper (HVD) _____	23
6" - 14" (152.4 - 355.6) AMCA Industrial Isolation Damper _____	24
16" - 34" (406.4 - 863.6) AMCA High Value Heavy Duty Industrial Damper (HVD) _____	25
36" - 48" (914.4 - 1219.2) AMCA High Value Heavy Duty Industrial Damper (HVD) _____	26
50" (1270.0) & Larger Reinforced Heavy Duty Industrial Damper _____	27
16" - 84" (609.6 - 2133.6) Ultra Series Industrial Damper _____	28
86" - 120" (2184.4 - 3048.0) Ultra Series Dual Blade Industrial Damper _____	29
4" - 36" (101.6 - 914.4) Horizontal Run Isolation Blastgate _____	30
38" (965.2mm) & Larger Horizontal Run Multi-blade Isolation Blastgate _____	31
4" - 36" (101.6 - 914.4) Vertical Run Isolation Blastgate _____	32
38" (965.2mm) & Larger Vertical Run Multi-blade Isolation Blastgate _____	33
16" - 36" (406.4 - 914.4) Horizontal Run Actuated Isolation Blastgate _____	34
38" (965.2mm) & Larger Horizontal Run Actuated Multi-blade Isolation Blastgate _____	35
16" - 36" (406.4 - 914.4) Vertical Run Actuated Isolation Blastgate _____	36
38" (965.2mm) & Larger Vertical Run Actuated Multi-blade Isolation Blastgate _____	37

ACCESSORIES

Field Installed Nipple _____	38
Field Installed Test Port _____	39
Field Installed Straight Saddle Tap _____	40
Field Installed Boot Saddle Tap _____	41
Field Installed Lateral Saddle Tap _____	42
Field Installed Hot Tap _____	43
Cast Ring _____	44
Angle Ring _____	45
Custom Ring _____	46
EZ Clamp Kit _____	47
Manual and Hydraulic Swage Kits _____	48

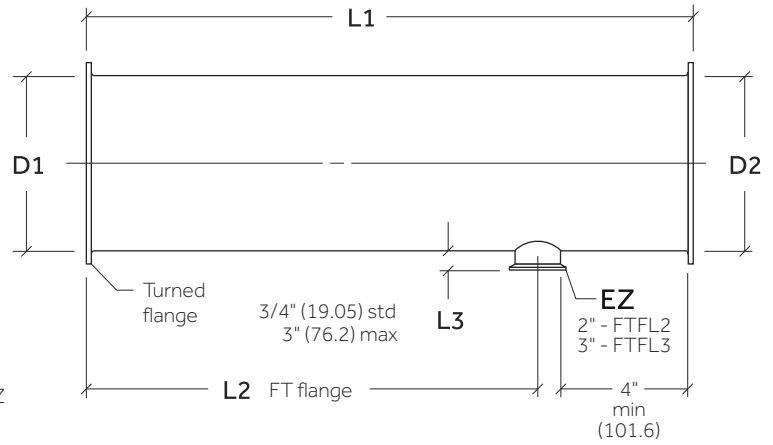
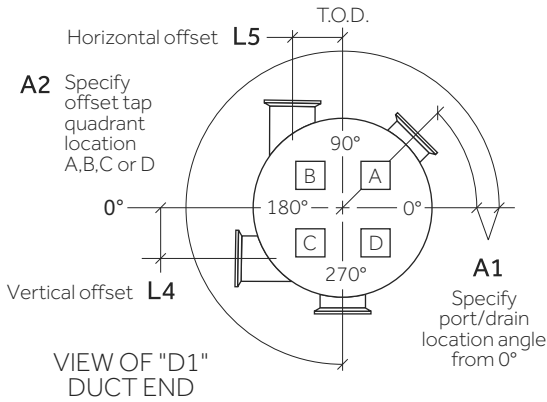
EZ FITTINGS

EZ Straight Standard and Custom Length Duct _____	49
EZ Tees, Laterals & Elbows _____	50
EZ Reducers, Damper, Blastgate & End Cap _____	51
EZ Clamps, PTFE Gaskets & Field Installed Straight Duct EZ Flange _____	52

**FAB-TECH
FLANGE
SYSTEM**

FT Flange to NPT Male Adapter & NPT Female Uncoated Adapters _____	53
FT Flange to KF Flange, Dwyer Pitot, Spinkler & Swagelok® Adapters _____	54
Field Installed FT Flange & FT Flange Saddle Tap _____	55
Specialized Installation Tools _____	56

Straight Duct w/ 2" (50.8) & 3" (76.2)
EZ Tap (Test Port, Drain)



FT Flange: See modular flange system section for adapters and EZ fittings section for duct to use with the FT Flange. FT Flange/test port may be installed on fittings other than straight duct.

TAP SPECIFICATIONS OFFSET TAP

Fitting number	Qty	-D1- Duct dia.	-L1- Duct length	-D1- Ring type	-D2- Ring type	Tap size 2" or 3"	-L2- Locate tap from D1	-L3- Tap length	-A1- Tap angle	-A2- Tap quad A,B,C,D	-L4- Vert offset	-L5- Horz offset

Notes:

- 1 **Metric equivalents are shown in parenthesis (millimeters or as noted).**
- 2 See the standards section of the product catalog for information about duct gauge, ring mechanical specifications, hardware and gaskets.
- 3 **OPTION:** Custom length
- 4 **OPTION:** Raw end
- 5 **OPTION:** Multiple / offset taps (see multiple tap sheet)
- 6 Duct greater than 84" dia. (2133.6) requires engineering review/approval.
- 7 Our recommendation is to add taps to standard 4' (1219.2) and 8' (2438.4) duct when possible - tap dimensions shown are mins. Longer than standard duct lengths and/or higher system pressures may require additional stiffeners per SMACNA, specifications available from Exential.
- 8 All duct fittings with standard connections include gaskets and clamps or hardware as required for installation.

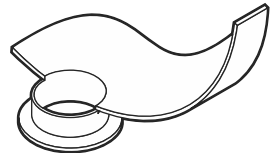
Standard duct lengths ("L1"):

Ring	Diameter	"L1"=4' (1219.2)	"L1"=8' (2438.4)
EZ/SC	4" (101.6) & 6" (152.4)	47.25" (1200.5)	NA
EZ/SC	8" (203.2) to 14" (355.6)	47.25" (1200.5)	95.25" (2419.35)
SS	4" (101.6) to 48" (1219.2)	47.25" (1200.5)	95.25" (2419.35)
SS	50" (1270) to 128" (3251.2)	46.75" (1187.45)	94.75" (2406.65)

- Joints/rings:
- EZ** EZ clamp 4"-14"Ø (101.6 - 355.6)
 - SC** Stainless cast ring 4"-14"Ø (101.6 - 355.6)
 - BI** Black iron angle ring 16"-120"Ø (406.4 - 3048.0)
 - SS** Stainless angle ring 4"-128"Ø (101.6 - 3251.2)

Remarks:

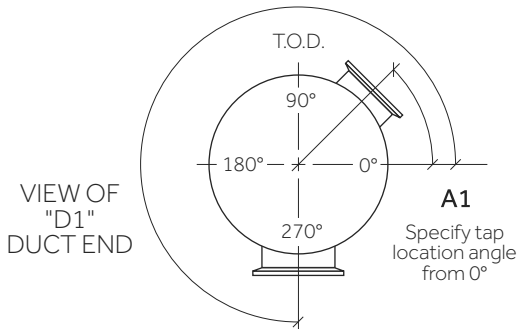
Company / job reference:



Straight Duct with Straight Tap

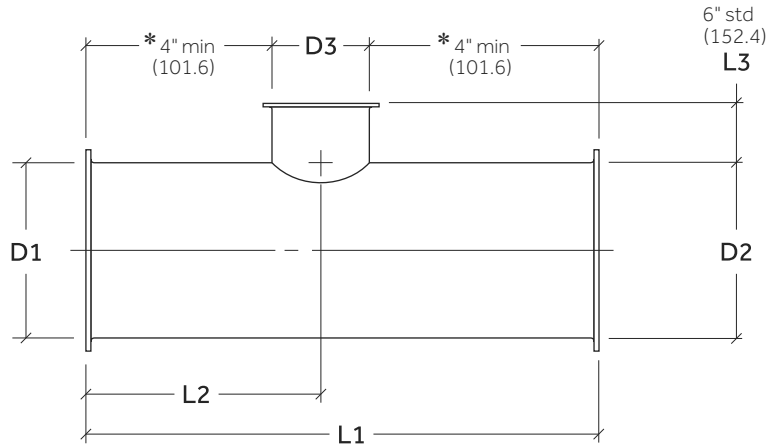
(Not for use with 2" (50.4) & 3" (76.2) EZ Taps)

* Min distance to duct end
 "D1" = 4" (101.6) - 94" (2387.6): 4" (101.6) min
 "D1" = 96" (2438.4) - 128" (3251.2): 5" (127.0) min



"L1" min = ("D3" + 8" (203.2))
 "L1" max = 96-1/4" (2444.8)
 "D3" max = 88" (2235.2)

Straight tap greater than 88" (2235.2) ["D3"] requires 2 piece design and engineering review



Fitting number	Qty	TAP SPECIFICATIONS								
		-D1- Duct dia.	-L1- Duct length	-D1- Ring type	-D2- Ring type	-D3- Tap dia.	-L2- Locate tap from D1	-L3- Tap length	-D3- Ring type	-A1- Tap angle

Notes:

- 1 **Metric equivalents are shown in parenthesis (millimeters or as noted).**
- 2 See the standards section of the product catalog for information about duct gauge, ring mechanical specifications, hardware and gaskets.
- 3 **OPTION:** Custom length
- 4 **OPTION:** Raw end
- 5 **OPTION:** Multiple / offset taps (see multiple tap sheet)
- 6 Duct greater than 84" dia. (2133.6) requires engineering review/approval.
- 7 Our recommendation is to add taps to standard 4' (1219.2) and 8' (2438.4) duct when possible - tap dimensions shown are mins. Longer than standard duct lengths and/or higher system pressures may require additional stiffeners per SMACNA, specifications available from Exential.
- 8 All duct fittings with standard connections include gaskets and clamps or hardware as required for installation.

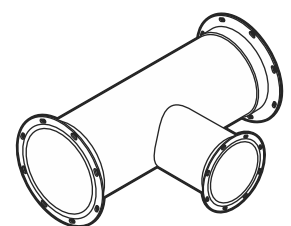
Standard duct lengths ("L1"):

Ring	Diameter	"L1"=4' (1219.2)	"L1"=8' (2438.4)
EZ/SC	4" (101.6) & 6" (152.4)	47.25" (1200.5)	NA
EZ/SC	8" (203.2) to 14" (355.6)	47.25" (1200.5)	95.25" (2419.35)
SS	4" (101.6) to 48" (1219.2)	47.25" (1200.5)	95.25" (2419.35)
SS	50" (1270) to 128" (3251.2)	46.75" (1187.45)	94.75" (2406.65)

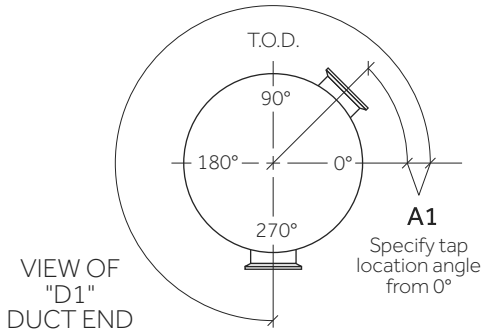
- Joints/rings:
- EZ** EZ clamp 4"-14"Ø (101.6 - 355.6)
 - SC** Stainless cast ring 4"-14"Ø (101.6 - 355.6)
 - BI** Black iron angle ring 16"-120"Ø (406.4 - 3048.0)
 - SS** Stainless angle ring 4"-128"Ø (101.6 - 3251.2)

Remarks:

Company / job reference:

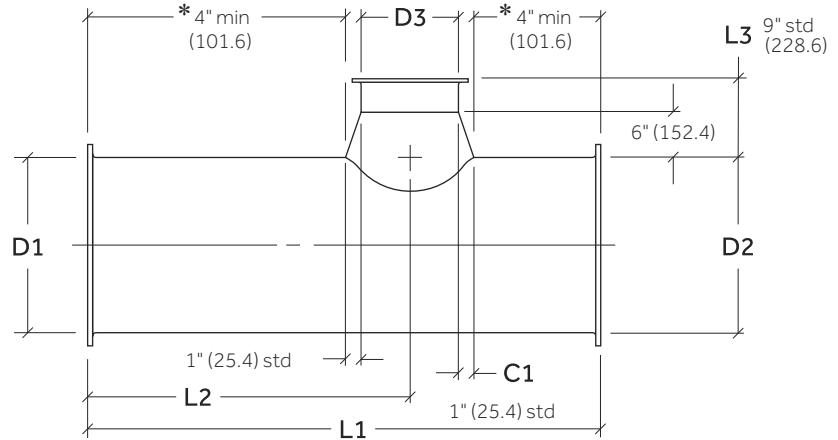


* Min distance to duct end
 "D1" = 4" (101.6) - 94" (2387.6): 4" (101.6) Min
 "D1" = 96" (2438.4) - 128" (3251.2): 5" (127.0) Min



"L1" Min = ("D3" + 10") (254.0)
 "L1" Max = 96-1/4" (2444.8)
 "D3" Max = 86" (2184.4)

Conical tap greater than 86" (2184.4) ["D3"]
 Requires 2 piece design and engineering review



TAP SPECIFICATIONS

Fitting number	Qty	-D1- Duct dia.	-L1- Duct length	-D1- Ring type	-D2- Ring type	-D3- Tap dia.	-L2- Locate tap from D1	-L3- Tap length	-D3- Ring type	-C1- Boot Length	-A1- Tap angle

Notes:

- 1 **Metric equivalents are shown in parenthesis (millimeters or as noted).**
- 2 See the standards section of the product catalog for information about duct gauge, ring mechanical specifications, hardware and gaskets.
- 3 **OPTION:** Custom length
- 4 **OPTION:** Raw end
- 5 **OPTION:** Multiple / offset taps (see multiple tap sheet)
- 6 Duct greater than 84" dia. (2133.6) requires engineering review/approval.
- 7 Our recommendation is to add taps to standard 4' (1219.2) and 8' (2438.4) duct when possible - tap dimensions shown are mins. Longer than standard duct lengths and/or higher system pressures may require additional stiffeners per SMACNA, specifications available from Exentia.
- 8 All duct fittings with standard connections include gaskets and clamps or hardware as required for installation.

Standard duct lengths ("L1"):

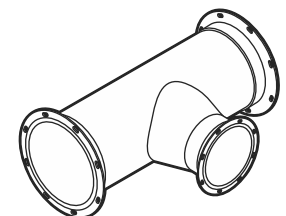
Ring	Diameter	"L1"=4' (1219.2)	"L1"=8' (2438.4)
EZ/SC	4" (101.6) & 6" (152.4)	47.25" (1200.5)	NA
EZ/SC	8" (203.2) to 14" (355.6)	47.25" (1200.5)	95.25" (2419.35)
SS	4" (101.6) to 48" (1219.2)	47.25" (1200.5)	95.25" (2419.35)
SS	50" (1270) to 128" (3251.2)	46.75" (1187.45)	94.75" (2406.65)

Joints/rings:

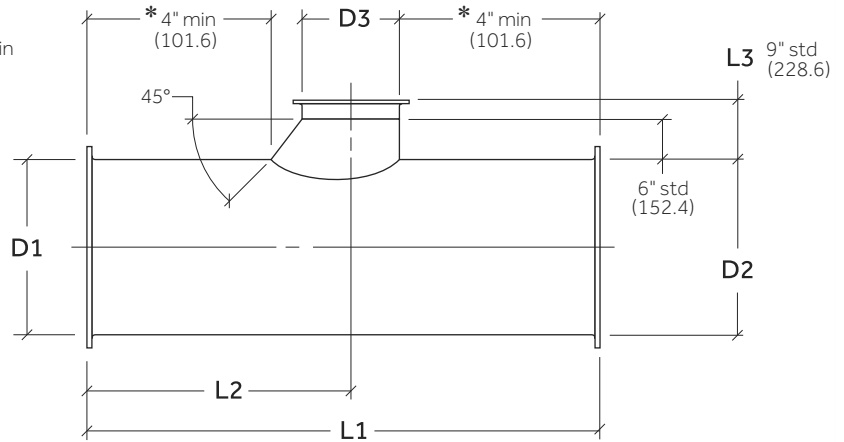
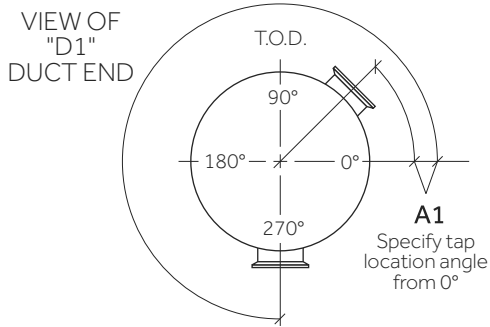
- EZ** EZ clamp 4"-14"Ø (101.6 - 355.6)
- SC** Stainless cast ring 4"-14"Ø (101.6 - 355.6)
- BI** Black iron angle ring 16"-120"Ø (406.4 - 3048.0)
- SS** Stainless angle ring 4"-128"Ø (101.6 - 3251.2)

Remarks:

Company / job reference:



* Min distance to duct end
 "D1" = 4" (101.6) - 94" (2387.6): 4" (101.6) Min
 "D1" = 96" (2438.4) - 128" (3251.2): 5" (127.0) Min



"L1" Min = ("D3" + 6" (152.4)) + 8" (203.2)
 "L1" Max = 96 - 1/4" (2444.8)
 "D3" Max = 86" (2184.4)

Shoe tap greater than max "D3" requires 2 piece design and engineering review

TAP SPECIFICATIONS

Fitting number	Qty	- D1 - Duct dia.	- L1 - Duct length	- D1 - Ring type	- D2 - Ring type	- D3 - Tap dia.	- L2 - Locate tap from D1	- L3 - Tap length	- D3 - Ring type	- A1 - Tap angle

Notes:

- 1 **Metric equivalents are shown in parenthesis (millimeters or as noted).**
- 2 See the standards section of the product catalog for information about duct gauge, ring mechanical specifications, hardware and gaskets.
- 3 **OPTION:** Custom length
- 4 **OPTION:** Raw end
- 5 **OPTION:** Multiple / offset taps (see multiple tap sheet)
- 6 Duct greater than 84" dia. (2133.6) requires engineering review/approval.
- 7 Our recommendation is to add taps to standard 4' (1219.2) and 8' (2438.4) duct when possible - tap dimensions shown are mins. Longer than standard duct lengths and/or higher system pressures may require additional stiffeners per SMACNA, specifications available from Exentia.
- 8 All duct fittings with standard connections include gaskets and clamps or hardware as required for installation.

Standard duct lengths ("L1"):

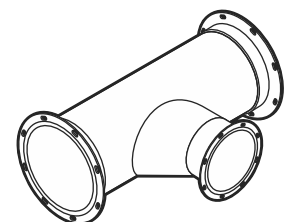
Ring	Diameter	"L1"=4' (1219.2)	"L1"=8' (2438.4)
EZ/SC	4" (101.6) & 6" (152.4)	47.25" (1200.5)	NA
EZ/SC	8" (203.2) to 14" (355.6)	47.25" (1200.5)	95.25" (2419.35)
SS	4" (101.6) to 48" (1219.2)	47.25" (1200.5)	95.25" (2419.35)
SS	50" (1270) to 128" (3251.2)	46.75" (1187.45)	94.75" (2406.65)

Joints/rings:

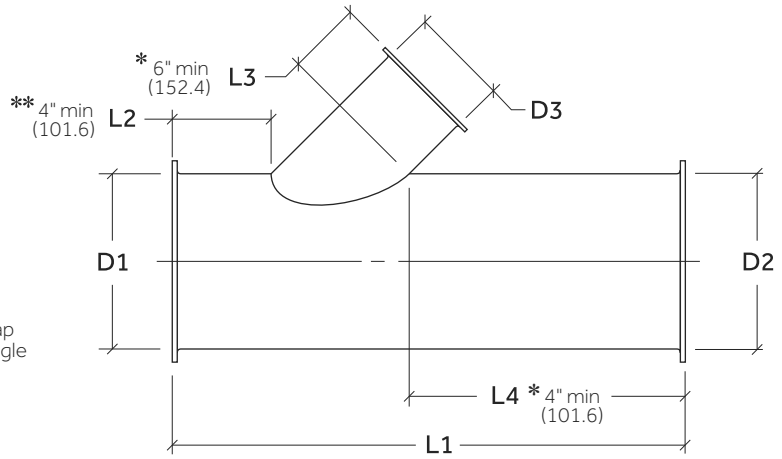
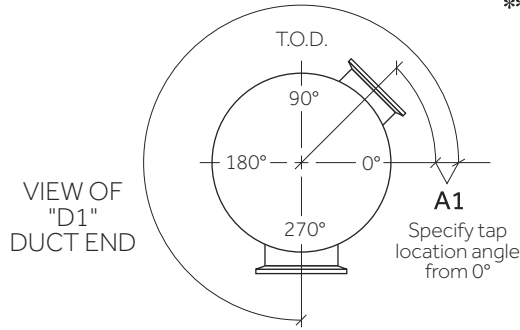
- EZ** EZ clamp 4"-14"Ø (101.6 - 355.6)
- SC** Stainless cast ring 4"-14"Ø (101.6 - 355.6)
- BI** Black iron angle ring 16"-120"Ø (406.4 - 3048.0)
- SS** Stainless angle ring 4"-128"Ø (101.6 - 3251.2)

Remarks:

Company / job reference:



** L2 min distance
 "D1" = 4" (101.6) - 94" (2387.6): 4" (101.6) Min
 "D1" = 96" (2438.4) - 128" (3251.2): 5" (127.0) Min



"L1" Min = ("D3" X 1.414) + L2 Min (101.6) + "L4" Min"
 (See min length chart for "L4")
 "L1" Max = 96-1/4" (2444.8)
 "D3" Max = 60" (1524.0)
 Lateral tap greater than 60" (1524.0) ["D3"]
 requires 2 piece design and engineering review

* Min length for "L3" and "L4"

"D1"	"L3"	"L4"
4" (101.6)- 48" (1219.2)	6" (152.4) Min	4" (101.6) Min
50" (1270.0)- 58" (1473.2)	7" (177.8) Min	4" (101.6) Min
60" (1524.0)- 94" (2387.6)	8" (203.2) Min	5" (127.0) Min
96" (2348.4)- 120" (3048.0)	10½" (266.7) Min	6" (152.4) Min

Fitting number	Qty	TAP SPECIFICATIONS								
		- D1 - Duct dia.	- L1 - Duct length	- D1 - Ring type	- D2 - Ring type	- D3 - Tap dia.	- L2 - Locate tap from D1	- L3 - Tap length	- D3 - Ring type	- A1 - Tap angle

Notes:

- 1 **Metric equivalents are shown in parenthesis (millimeters or as noted).**
- 2 See the standards section of the product catalog for information about duct gauge, ring mechanical specifications, hardware and gaskets.
- 3 **OPTION:** Custom length
- 4 **OPTION:** Raw end
- 5 **OPTION:** Multiple / offset taps (see multiple tap sheet)
- 6 Duct greater than 84" dia. (2133.6) requires engineering review/approval.
- 7 Our recommendation is to add taps to standard 4' (1219.2) and 8' (2438.4) duct when possible - tap dimensions shown are mins. Longer than standard duct lengths and/or higher system pressures may require additional stiffeners per SMACNA, specifications available from Exential.
- 8 All duct fittings with standard connections include gaskets and clamps or hardware as required for installation.

Standard duct lengths ("L1"):

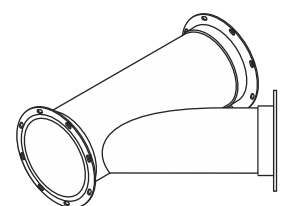
Ring	Diameter	"L1"=4' (1219.2)	"L1"=8' (2438.4)
EZ/SC	4" (101.6) & 6" (152.4)	47.25" (1200.5)	NA
EZ/SC	8" (203.2) to 14" (355.6)	47.25" (1200.5)	95.25" (2419.35)
SS	4" (101.6) to 48" (1219.2)	47.25" (1200.5)	95.25" (2419.35)
SS	50" (1270) to 128" (3251.2)	46.75" (1187.45)	94.75" (2406.65)

Joints/rings:

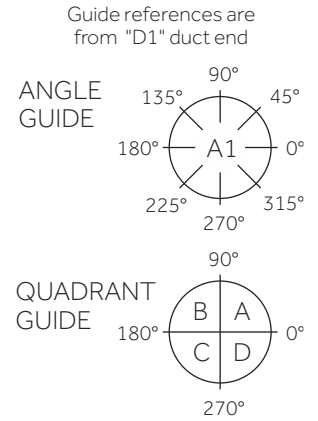
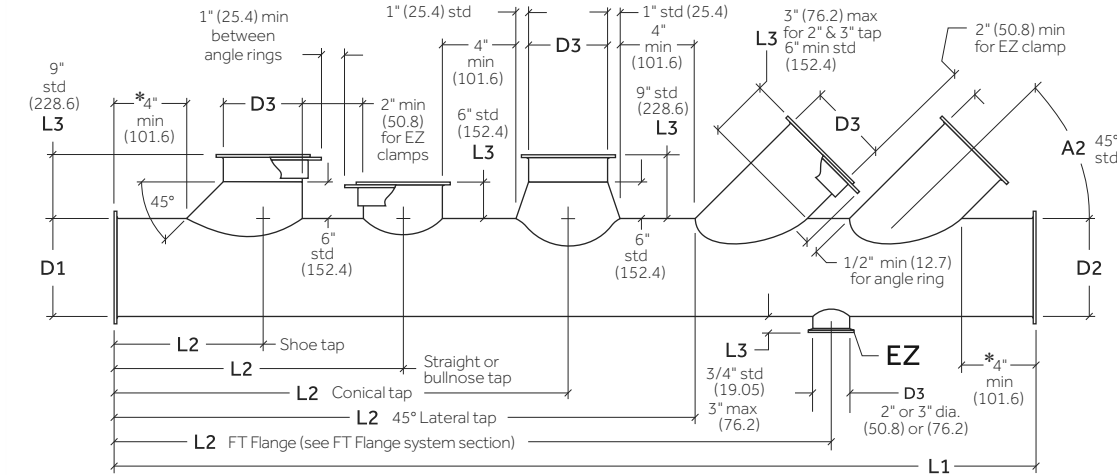
- EZ** EZ clamp 4"-14"Ø (101.6 - 355.6)
- SC** Stainless cast ring 4"-14"Ø (101.6 - 355.6)
- BI** Black iron angle ring 16"-120"Ø (406.4 - 3048.0)
- SS** Stainless angle ring 4"-128"Ø (101.6 - 3251.2)

Remarks:

Company / job reference:



Round Duct Order Sheet
Straight Duct w/ Multiple Taps



MAIN DUCT SPECIFICATIONS

Fitting number	Qty	- D1 - Duct dia.	- L1 - Duct length	- D1 - Ring type	- D2 - Ring type

Joints/rings:

- EZ** EZ clamp 4"-14"Ø (101.6 - 355.6)
- SC** Stainless cast ring 4"-14"Ø (101.6 - 355.6)
- BI** Black iron angle ring 16"-120"Ø (406.4 - 3048.0)
- SS** Stainless angle ring 4"-128"Ø (101.6 - 3251.2)

SEE PRECEDING PAGE FOR MULTIPLE TAP GUIDELINES
TAP SPECIFICATIONS

CUSTOM LATERAL AND OFFSET TAP SPECS
CUSTOM LOCATE OFFSET TAP

Tap type	- D3 - Tap dia.	- L3 - Tap length	- D3 - Ring type	- L2 - Locate tap from D1	- A1 - Tap angle See guide above	- A2 - Lateral angle other than 45°	- L4 - Horizontal offset	Tap quadrant A, B, C, or D See guide above	- L5 - Vertical offset
1									
2									
3									
4									
5									
6									
7									

Notes:

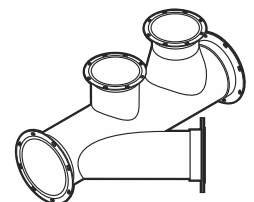
- 1 **Metric equivalents are shown in parenthesis (millimeters or as noted).**
- 2 See the standards section of the product catalog for information about duct gauge, ring mechanical specifications, hardware and gaskets.
- 3 **OPTION:** Custom length
- 4 **OPTION:** Raw end
- 5 All duct fittings with standard connections include gaskets and clamps or hardware as required for installation.

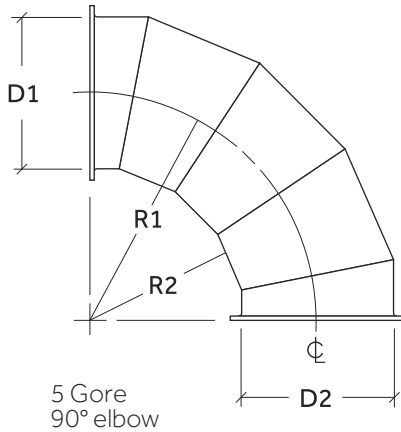
Standard duct lengths ("L1"):

Ring Diameter	"L1"=4' (1219.2)	"L1"=8' (2438.4)
EZ/SC 4" (101.6) & 6" (152.4)	47.25" (1200.5)	NA
EZ/SC 8" (203.2) to 14" (355.6)	47.25" (1200.5)	95.25" (2419.35)
SS 4" (101.6) to 48" (1219.2)	47.25" (1200.5)	95.25" (2419.35)
SS 50" (1270) to 128" (3251.2)	46.75" (1187.45)	94.75" (2406.65)

Remarks:

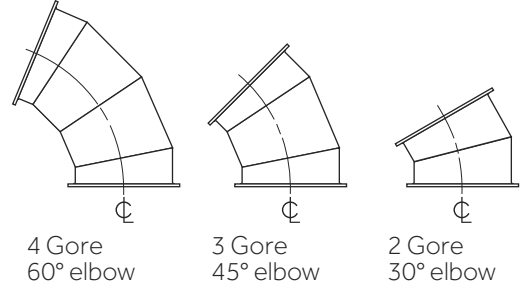
Company / job reference:





STANDARD RADIUS
AT THE DUCT CENTERLINE
"R1" = 1.5 x "D"
STANDARD THROAT RADIUS
"R2" = "D"

*Specify either centerline radius or throat radius, both not required.



Manufacturing limitations:

Due to limitations, the following elbows are not available as one piece:

- FULL RADIUS 90° ELBOW > 56" (1422.4) DIA.
- FULL RADIUS 60° ELBOW > 82" (2082.8) DIA.
- FULL RADIUS 45° ELBOW > 106" (2692.4) DIA.
- HALF RADIUS 90° ELBOW > 76" (1930.4) DIA.

Elbows above these limits will be manufactured as smaller fittings (an 86" (2184.4) dia. 90° elbow will be supplied as two 45° elbows for example) or as clam shell designed fittings as two or more pieces. This applies to all large fittings as well as elbows.

Also, due to limitations, many of the smaller 1/2 radius elbows will require cast or flat rings.

Fitting number	Qty	- D1 - Duct dia.	Elbow angle	*-R1- Center radius in inches	*-R2- Throat radius in inches	- D1 - Ring type	- D2 - Ring type	Remarks

Notes:

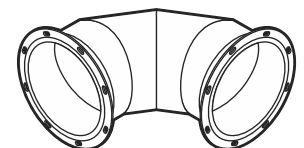
- 1 **Metric equivalents are shown in parenthesis (millimeters or as noted).**
- 2 See the standards section of the product catalog for information about duct gauge, ring mechanical specifications, hardware and gaskets.
- 3 **OPTION:** Custom number of gores
- 4 **OPTION:** Custom radii available
- 5 All duct fittings with standard connections include gaskets and clamps or hardware as required for installation.

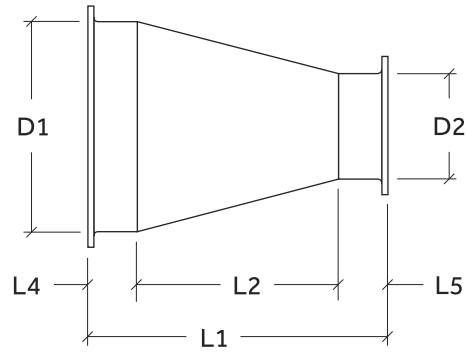
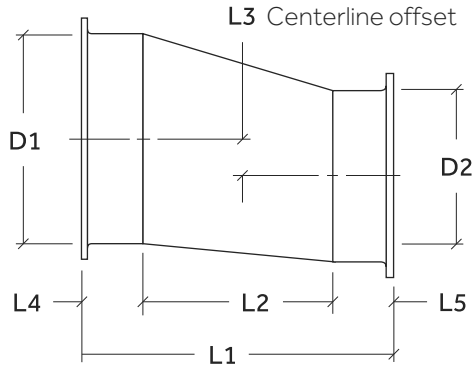
Joints/rings:

- EZ** EZ clamp 4"-14"Ø (101.6 - 355.6)
- SC** Stainless cast ring 4"-14"Ø (101.6 - 355.6)
- BI** Black iron angle ring 16"-120"Ø (406.4 - 3048.0)
- SS** Stainless angle ring 4"-128"Ø (101.6 - 3251.2)

Remarks:

Company / job reference:





Formula to calculate the minimum* length for reducers:

$$"L1" = "L2" + "L4" + "L5"$$

Use the charts below to determine the minimum length of "L2", "L4" and "L5":

(* Minimum length calculated to maintain minimal angular change, shorter taper lengths available.)

Fitting number	Qty	-D1- Duct dia.	-D2- Duct dia.	-L1- Duct length	-L2- Taper length	-L3- Center offset	-D1- Ring type	-D2- Ring type	Remarks

Eccentric

Amount of reduction "D1" minus "D2"	Minimum "L2"
6" (152.4) and less	12" (304.8)
7" (177.8) to 9" (228.6)	18" (457.2)
10" (254.0) to 13" (330.2)	24" (609.6)
14" (355.6) to 17" (431.8)	30" (762.0)

Concentric

Amount of reduction "D1" minus "D2"	Minimum "L2"
9" (228.6) and less	12" (304.8)
10" (254.0) to 14" (355.6)	18" (457.2)
15" (381.0) to 19" (482.6)	24" (609.6)
20" (508.0) to 24" (609.6)	30" (762.0)

Min "L4" / "L5"

Duct diameter "D1" or "D2"	Minimum "L4" or "L5"
4" (101.6) to 58" (1473.2)	3" (76.2)
60" (1524.0) to 94" (2387.6)	4" (101.6)
96" (2438.4) to 128" (3251.2)	5" (127.0)

Notes:

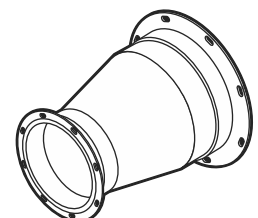
- 1 **Metric equivalents are shown in parenthesis (millimeters or as noted).**
- 2 See the standards section of the product catalog for information about duct gauge, ring mechanical specifications, hardware and gaskets.
- 3 **OPTION:** Custom lengths available
- 4 Duct greater than 84" dia. (2133.6) requires engineering review and approval.
- 5 All duct fittings with standard connections include gaskets and clamps or hardware as required for installation.

Joints/rings:

- EZ** EZ clamp 4"-14"Ø (101.6 - 355.6)
- SC** Stainless cast ring 4"-14"Ø (101.6 - 355.6)
- BI** Black iron angle ring 16"-120"Ø (406.4 - 3048.0)
- SS** Stainless angle ring 4"-128"Ø (101.6 - 3251.2)

Remarks:

Company / job reference:



Damper size:

Actuator type:

Pneumatic Available Air Pressure

Electric Voltage

Spring Return: Fail Open Fail Closed

Double Acting

Limit Switch: 1 Switch 2 Switch

Feedback Potentiometer

Positioner

Position Indicator

Manual Override Gearbox

Solenoid Valves

Customer selected actuator: Preferred actuator - make and model number:

Accessory part number:

Recommended minimum OPEN/CLOSE torque
inch pounds (newton meter)

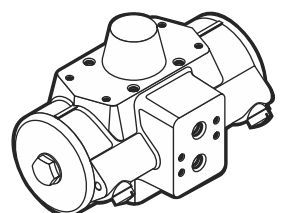
Isolation damper Size	Torque
Ø4" (101.6) - Ø14" (355.6)	250 (28.25Nm)
Ø16" (406.4) - Ø48" (1219.2)	1000 (112.98Nm)
Ø50" (1270.0) and larger	1600 (180.78Nm)
Rectangular damper	
Longest side up to 48" (1219.2)	1000 (112.98Nm)

Notes:

- 1 Metric equivalents are shown in parenthesis (millimeters or as noted).
- 2 All duct fittings with standard connections include gaskets and clamps or hardware as required for installation.

Remarks:

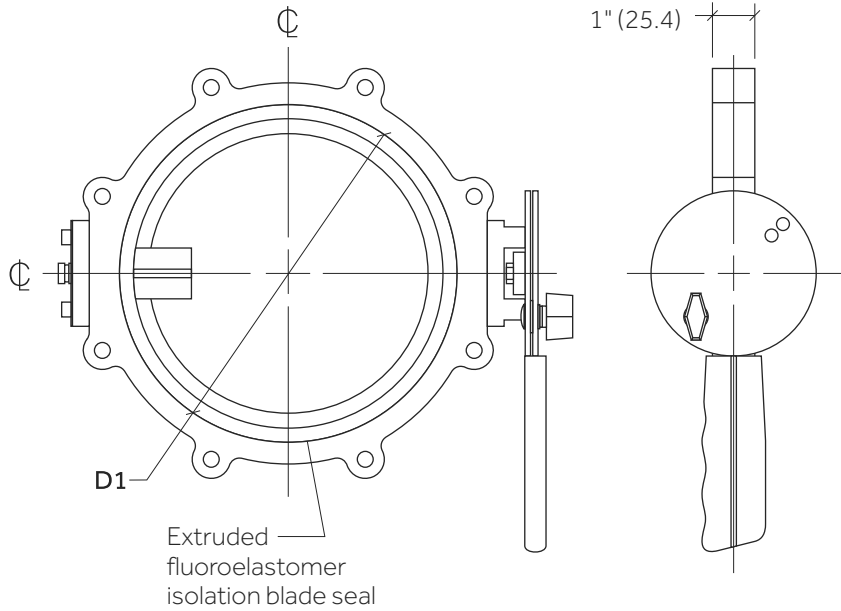
Company / job reference:



Round Duct Order Sheet
4" (101.6) - 14" (355.6) Wafer
Isolation Damper

Specifications:

- BODY: Coated solid aluminum body
- BODY LENGTH: 1" (25.4)
- COATING: PermaShield fluoropolymer barrier coating
- BLADE: Coated 10GA (3.57) SS
with fully welded drive axle
- 4"Ø BLADE: Machined PTFE
- EDGE SEALS: Viton extruded rubber
- BLADE HOLDERS: Molded 25% glass filled PTFE
- AXLE: Dual shaft 1/2"Ø (12.7) SS
- AXLE SEALS: Liquid tight - pos & neg system pressure
- BEARINGS: Nylon
- COATING: Fluoropolymer barrier coating
- QUADRANT: Manual locking handle
- LOCKOUT: 1/2" Intervals
- BLADE OPENS: CCW
- OPEN/CLOSE TORQUE: 250 in-lb (28.2 N-m)
recommended min



- D1 -
Duct
dia.

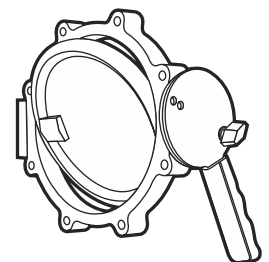
Fitting number	Qty	- D1 - Duct dia.	Remarks

Notes:

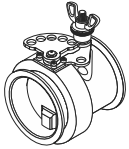
- 1 **Metric equivalents are shown in parenthesis (millimeters or as noted).**
- 2 See the angle ring mechanical specification chart in the product Catalog for bolt circle diameter, bolt hole size and number of bolt holes.
- 3 All duct fittings with standard connections include gaskets and clamps or hardware as required for installation.

Remarks:

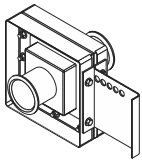
Company / job reference:



Round Duct Order Sheet
2" (50.8) & 3" (76.2) EZ Damper &
EZ Blastgate



Damper	Fitting number	Part number	Qty	Description
		PZD02		2" (50.8) diameter isolation EZ damper
		PZD03		3" (76.2) diameter isolation EZ damper



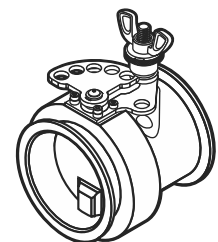
Blastgate	Fitting number	Part number	Qty	Description
		PZB02		2" (50.8) diameter horizontal EZ blastgate
		PZB03		3" (76.2) diameter horizontal EZ blastgate
		PZB02V		2" (50.8) diameter vertical EZ blastgate
		PZB03V		3" (76.2) diameter vertical EZ blastgate

Notes:

- 1 Metric equivalents are shown in parenthesis (millimeters or as noted).
- 2 Refer to the product catalog for specific details and dimensions.
- 3 All duct fittings with standard connections include gaskets and clamps or hardware as required for installation.

Remarks:

Company / job reference:

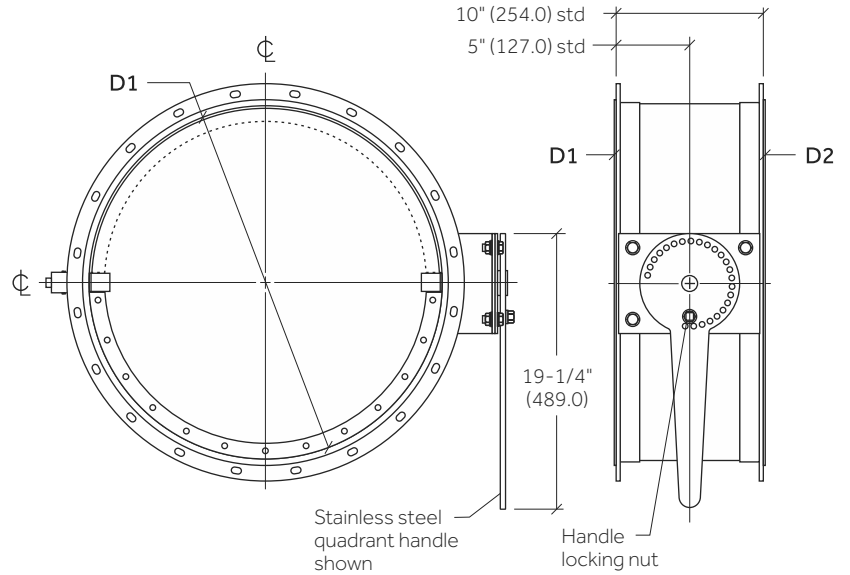


16" (406.4) - 48" (1219.2) High Value Heavy Duty Industrial Damper (HVD)

Specifications:

DIFFERENTIAL PRESSURE: 10" WG (2,488 Pa)
 BODY: Coated 12GA (2.78) stainless steel
 BODY LENGTH: 10" (254.0)
 COATING: PermaShield fluoropolymer barrier coating
 JOINING SYSTEM: Stitch welded coated black iron
 Van Stone rings

OPTION: Custom hole pattern
OPTION: Stitch welded stainless steel Van Stone rings
 MOUNTING HOLES: Straddle vertical centerline
 BLADE: 1/4" (6.35) coated stainless steel
 BLADE EDGE SEAL: Viton
 BLADE STOPS: Welded
 AXLES: Dual shaft 1.38Ø (34.9) stainless steel
 AXLE SEALS: Liquid tight
 SLEEVE BEARINGS: Thermoplastic
 ACTUATOR: Manual lever
OPTION: Manual gear box w/ lock out
OPTION: Custom actuator mounting kit
OPTION: Electric actuator
OPTION: Pneumatic actuator
 LOCKOUT: 1/2" intervals
 BLADE OPENS: CCW
 OPEN/CLOSE TORQUE: 1000 in-lb (113.2 N-m) recommended min



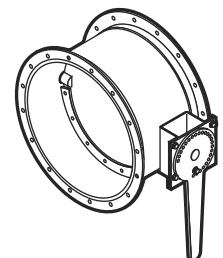
Fitting number	Qty	- D1 - Duct dia.	- D1 - Ring type	- D2 - Ring type	Indicate custom ring if required D1 or D2	Remarks
						HVHD
						HVHD
						HVHD
						HVHD
						HVHD
						HVHD
						HVHD
						HVHD
						HVHD
						HVHD
						HVHD

Notes:

- 1 Metric equivalents are shown in parenthesis (millimeters or as noted).
- 2 All duct fittings with standard connections include gaskets and clamps or hardware as required for installation.

Remarks:

Company / job reference:



6" (152.4) - 14" (355.6) AMCA Industrial Isolation Damper

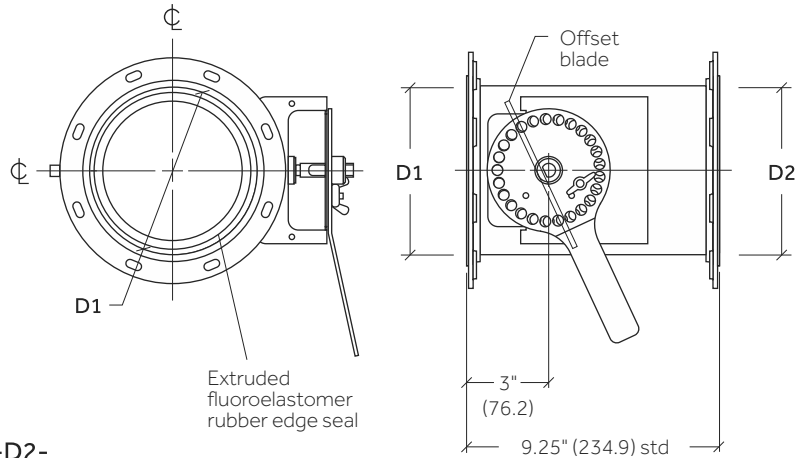
Specifications:

- BODY: Coated 20GA (0.95) stainless steel
- BODY LENGTH: 9-1/4" (234.9)
- OPTION: Custom length
- COATING: PermaShield fluoropolymer barrier coating
- JOINING SYSTEM: Floating cast stainless steel rings
- OPTION: EZ joining system 6"-14" (152.4-355.6)
- OPTION: Custom hole pattern
- BLADE: Offset - 10GA (3.57) coated stainless steel
- BLADE EDGE SEAL: Viton
- BLADE HOLDERS: Molded PTFE
- AXLES: Dual shaft 1/2"Ø (12.7) stainless steel
- AXLE SEALS: Liquid tight
- ACTUATOR: Manual lever
- OPTION: Electric actuator (stainless steel rings only)
- OPTION: Pneumatic actuator (stainless steel rings only)
- LOCKOUT: 1/2° intervals
- BLADE OPENS: CCW



Exential U.S. Inc. certifies that the Industrial Single Blade Isolation Damper shown herein is licensed to bear the AMCA Seal. The ratings shown are based on tests and procedures performed in accordance with AMCA Publication 511 and comply with the requirements of the AMCA Certified Ratings Program.

The AMCA Certified Ratings Seal applies to Air Leakage ratings and Air Performance ratings.



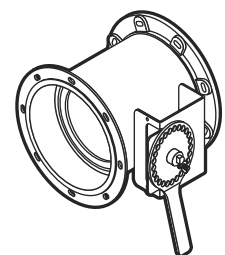
Fitting number	Qty	- D1 - Duct dia.	- D1 - Ring type	- D2 - Ring type	Remarks
					AMCA
					AMCA
					AMCA
					AMCA
					AMCA
					AMCA
					AMCA
					AMCA
					AMCA
					AMCA
					AMCA
					AMCA

Notes:

- 1 Metric equivalents are shown in parenthesis (millimeters or as noted).
- 2 All duct fittings with standard connections include gaskets and clamps or hardware as required for installation.

Remarks:

Company / job reference:



16" (406.4) - 34" (863.6) AMCA High Value Heavy Duty Industrial Damper (HVD)



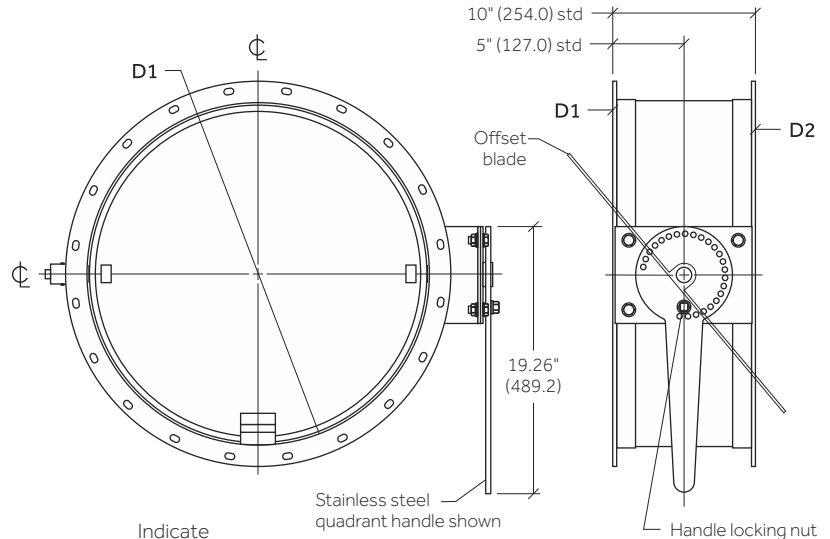
Exential U.S. Inc. certifies that the Industrial Single Blade Isolation Damper shown herein is licensed to bear the AMCA Seal. The ratings shown are based on tests and procedures performed in accordance with AMCA Publication 511 and comply with the requirements of the AMCA Certified Ratings Program.

The AMCA Certified Ratings Seal applies to Air Leakage ratings and Air Performance ratings.

Specifications:

DIFFERENTIAL PRESSURE: 10" WG (2,488 Pa)
 BODY: Coated 12GA (2.78) stainless steel
 BODY LENGTH: 10" (254.0)
 COATING: PermaShield fluoropolymer barrier coating
 JOINING SYSTEM: Stitch welded coated black iron
 Van Stone rings

- OPTION:** Custom hole pattern
- OPTION:** Stitch welded stainless steel Van Stone rings
- MOUNTING HOLES:** Straddle vertical centerline
- BLADE:** 1/4" (6.35) coated stainless steel
- BLADE EDGE SEAL:** Viton
- BLADE STOPS:** Welded
- AXLES:** Dual shaft 1.38Ø (34.9) stainless steel
- AXLE SEALS:** Liquid tight
- SLEEVE BEARINGS:** Thermoplastic
- ACTUATOR:** Manual lever
- OPTION:** Manual gear box w/ lock out
- OPTION:** Custom actuator mounting kit
- OPTION:** Electric actuator
- OPTION:** Pneumatic actuator
- LOCKOUT:** 1/2" intervals
- BLADE OPENS:** CCW



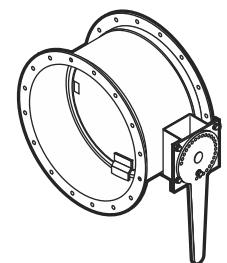
Fitting number	Qty	-D1- Duct dia.	-D1- Ring type	-D2- Ring type	Indicate custom ring if required D1 or D2	Remarks
						AMCA
						AMCA
						AMCA
						AMCA
						AMCA
						AMCA
						AMCA
						AMCA
						AMCA
						AMCA

Notes:

- 1 Metric equivalents are shown in parenthesis (millimeters or as noted).
- 2 All duct fittings with standard connections include gaskets and clamps or hardware as required for installation.

Remarks:

Company / job reference:



36" (914.4) - 48" (1219.2) AMCA High Value
Heavy Duty Industrial Damper (HVD)

Specifications:

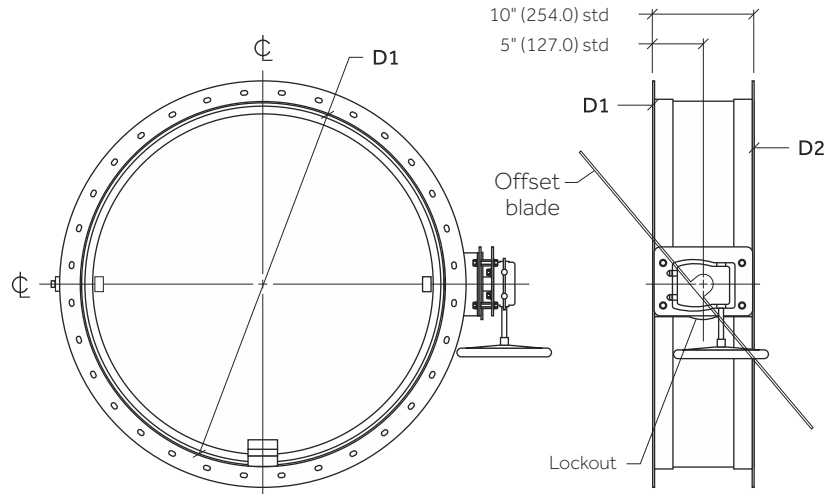
DIFFERENTIAL PRESSURE: 10" WG (2,488 Pa)
 BODY: Coated 12GA (2.78) stainless steel
 BODY LENGTH: 10" (254.0)
 COATING: PermaShield fluoropolymer barrier coating
 JOINING SYSTEM: Stitch welded coated black iron
 Van Stone rings

OPTION: Custom hole pattern
OPTION: Stitch welded stainless steel Van Stone rings
 MOUNTING HOLES: Straddle vertical centerline
 BLADE: Offset - 1/4" (6.35) coated stainless steel
 BLADE EDGE SEAL: Viton
 BLADE STOPS: Welded
 AXLES: Dual shaft 1.38Ø (34.9) stainless steel
 AXLE SEALS: Liquid tight
 SLEEVE BEARINGS: Thermoplastic
 ACTUATOR: Manual gear box w/ lock out
OPTION: Custom actuator mounting kit
OPTION: Electric actuator
OPTION: Pneumatic actuator
 LOCKOUT: 1/2° intervals
 BLADE OPENS: CCW



Exential U.S. Inc. certifies that the Industrial Single Blade Isolation Damper shown herein is licensed to bear the AMCA Seal. The ratings shown are based on tests and procedures performed in accordance with AMCA Publication 511 and comply with the requirements of the AMCA Certified Ratings Program.

The AMCA Certified Ratings Seal applies to Air Leakage ratings and Air Performance ratings.



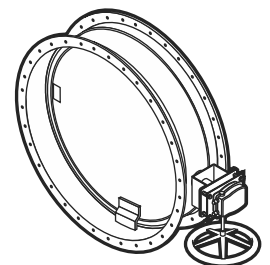
Fitting number	Qty	-D1- Duct dia.	-D1- Ring type	-D2- Ring type	Indicate custom ring if required D1 or D2	Remarks
						AMCA
						AMCA
						AMCA
						AMCA
						AMCA
						AMCA
						AMCA
						AMCA
						AMCA
						AMCA

Notes:

- 1 Metric equivalents are shown in parenthesis (millimeters or as noted).
- 2 All duct fittings with standard connections include gaskets and clamps or hardware as required for installation.

Remarks:

Company / job reference:

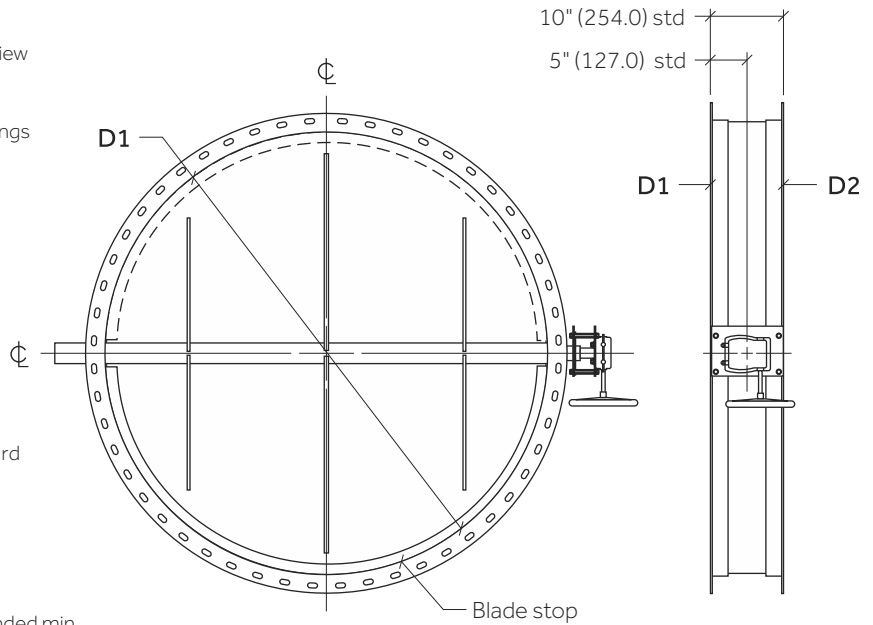


50" (1270.0) & Larger Reinforced Heavy Duty Industrial Damper (RHD)

Specifications:

- DIFFERENTIAL PRESSURE: 10" WG (2,488 Pa)
- BODY: Coated 12GA (2.78) stainless steel
- OPTION:** Avail to 120" (3048.0) diameter w/ engineering review
- BODY LENGTH: 10" (254.0)
- COATING: PermaShield fluoropolymer barrier coating
- JOINING SYSTEM: Stitch welded stainless steel Van Stone rings
- OPTION:** Custom hole pattern
- MOUNTING HOLES: Straddle vertical centerline
- BLADE: 3/8" (9.5) coated reinforced stainless steel
- BLADE STOPS: Welded
- AXLES: Dual shaft 1.85Ø (47.0) stainless steel
- AXLE SEALS: Liquid tight
- SLEEVE BEARINGS: Thermoplastic
- ACTUATOR: Gear actuator w/ lock out
- OPTION:** Custom actuator mounting kit
- OPTION:** Electric actuator
- OPTION:** Pneumatic actuator
- Pneumatic actuated dampers - Hytork actuator standard
 - XL45 - up to 20" (508.0)
 - XL280 - 21" (533.4) to 48" (1219.2)
 - XL425 - 49" (1244.6) to 94" (2387.6)

- LOCKOUT: 1/2° intervals
- BLADE OPENS: CCW
- OPEN/CLOSE TORQUE: 1600 in-lb (180.8 N-m) recommended min



- D1 -
Duct dia. Indicate custom ring if required D1 or D2

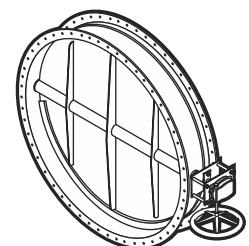
Fitting number	Qty	- D1 - Duct dia.	Indicate custom ring if required D1 or D2	Remarks
				RHD
				RHD
				RHD
				RHD
				RHD
				RHD
				RHD
				RHD
				RHD
				RHD

Notes:

- 1 Metric equivalents are shown in parenthesis (millimeters or as noted).
- 2 All duct fittings with standard connections include gaskets and clamps or hardware as required for installation.

Remarks:

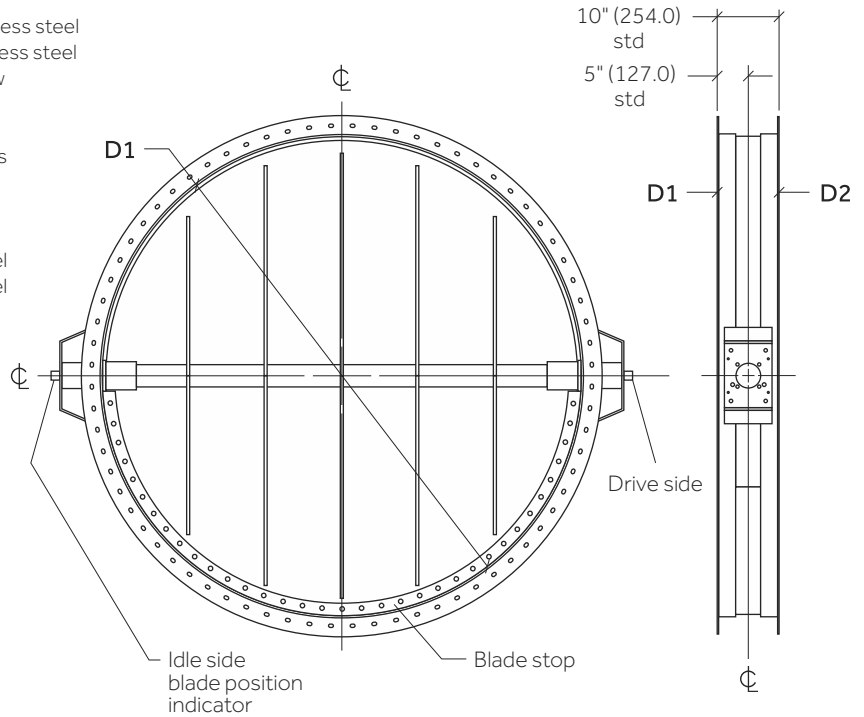
Company / job reference:



16" (406.4) - 84" (2133.6) Ultra Series Industrial Damper

Specifications:

- DIFFERENTIAL PRESSURE: 30" WG (7,473 Pa)
- BODY: Coated 16"-44" (406.4-1117.6) dia. 10GA (3.57) stainless steel
Coated 46"-84" (1168.4-2133.6) dia. 1/4" (6.35) stainless steel
- OPTION:** Available to 120" (3048.0) dia. w/ engineering review
- BODY LENGTH: 10" (254.0)
- COATING: PermaShield fluoropolymer barrier coating
- JOINING SYSTEM: Fully welded stainless steel Van Stone rings
- OPTION:** Custom hole pattern
- MOUNTING HOLES: Straddle vertical centerline
- BLADE: Coated reinforced
16"-58" (406.4-1473.2) dia. 1/4" (6.35) stainless steel
16"-58" (406.4-1473.2) dia. 1/4" (6.35) stainless steel
- BLADE STOPS: Welded
- AXLES: 16"-44" (406.4-1117.6) dia.
Dual shaft 1.20Ø (30.5) stainless steel
46"-58" (1168.4-1473.2) dia.
Dual shaft 1.85Ø (47.0) stainless steel
60" (1524.0) dia. and larger
Dual shaft 2.45Ø (62.2) stainless steel
- AXLE SEALS: Liquid tight
- SLEEVE BEARINGS: Bronze sleeve (16"-58")
Spherical heim (60"-84")
- ACTUATOR: None, standard interface for
Rotork high speed SI-1-Q series
- OPTION:** Custom actuator mounting kit
- OPTION:** Electric actuator
- OPTION:** Pneumatic actuator
- LOCKOUT: Variable position
- BLADE POSITION INDICATOR: Idle side
- BLADE OPENS: CCW



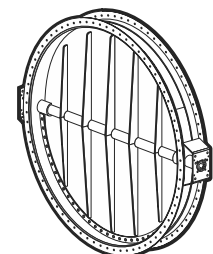
- D1 -
Duct dia. Indicate custom ring if required D1 or D2

Fitting number	Qty	Duct dia.	Remarks

Notes:

- 1 Metric equivalents are shown in parenthesis (millimeters or as noted).
- 2 All duct fittings with standard connections include gaskets and clamps or hardware as required for installation.

Remarks:

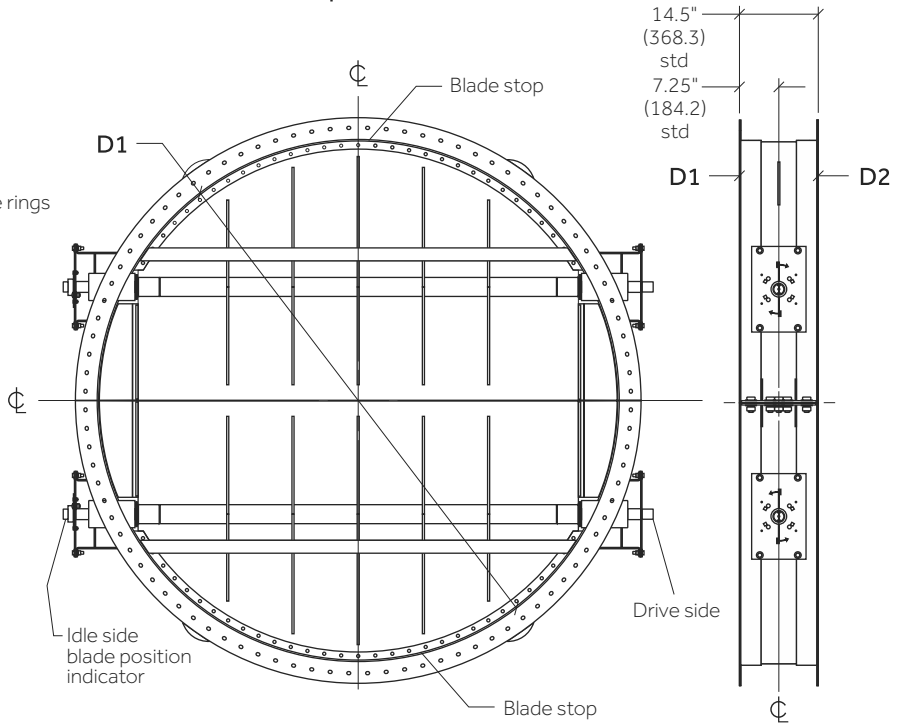


Company / job reference:

86" (2184.4) - 120" (3048.0) Ultra Series Industrial Damper

Specifications:

- DIFFERENTIAL PRESSURE: 30" WG (7,473 Pa)
- BODY: 1/4" (6.35) stainless steel
- BODY LENGTH: 14.5" (368.3)
- COATING: PermaShield fluoropolymer barrier coating
- JOINING SYSTEM: Fully welded stainless steel Van Stone rings
- OPTION:** Custom hole pattern
- MOUNTING HOLES: Straddle vertical centerline
- BLADE: Coated reinforced 3/8" (9.53) stainless steel
- BLADE STOPS: Welded
- AXLES: Dual shaft 2.00Ø (50.8) stainless steel
- AXLE SEALS: Liquid tight
- BEARINGS: Spherical heim
- ACTUATOR: None, F14 / Fa14 mounting pattern
- OPTION:** Custom actuator mounting kit
- LOCKOUT: Variable position
- BLADE POSITION INDICATOR: Idle side
- BLADE OPENS: CW (top) - CCW (bottom)



- D1 -
Duct
dia. Indicate
custom ring
if required
D1 or D2

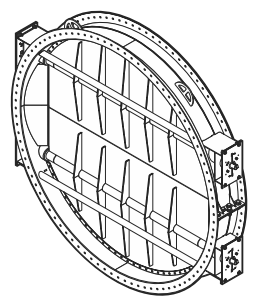
Fitting number	Qty	- D1 - Duct dia.	Indicate custom ring if required D1 or D2	Remarks

Notes:

- 1 Metric equivalents are shown in parenthesis (millimeters or as noted).
- 2 All duct fittings with standard connections include gaskets and clamps or hardware as required for installation.

Remarks:

Company / job reference:



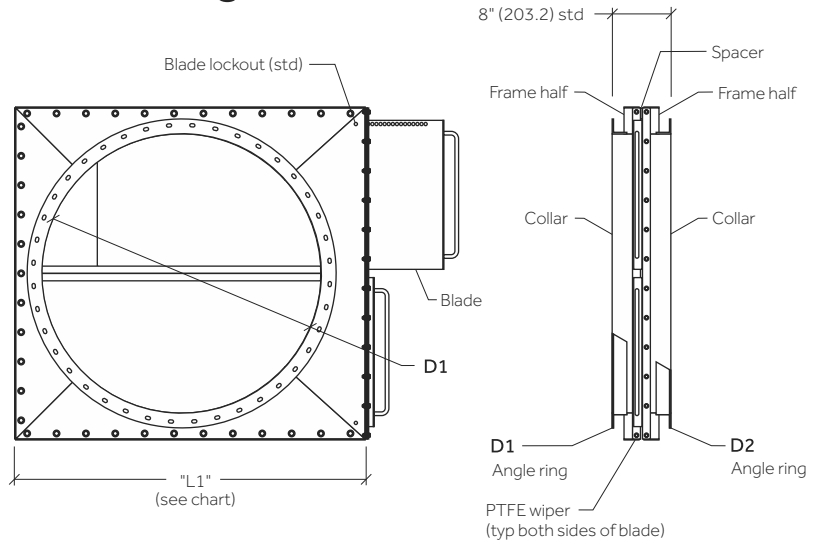
38" (965.2) & Larger Horizontal Run Isolation Blastgate

Specifications:

- FRAME: Stainless steel
- COLLAR: Stainless steel
- RINGS: Stainless steel
- BLADE: Stainless steel
- BLADE: Lockout system
- COATING: PermaShield fluoropolymer barrier coating

Joints/rings:

- EZ** EZ clamp 4"-14"Ø (101.6 - 355.6)
- SC** Stainless cast ring 4"-14"Ø (101.6 - 355.6)
- BI** Black iron angle ring 16"-120"Ø (406.4 - 3048.0)
- SS** Stainless angle ring 4"-128"Ø (101.6 - 3251.2)



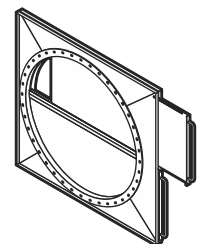
DUCT DIA "D":	OUTSIDE DIM "L1":	FRAME BOLTS:	NO. OF BLADES:
38" (965.2) to 46" (1168.4)	DIA. "D" + 10" (101.6)	.31" (7.87)	2
48" (1219.2) to 60" (1524.0)	DIA. "D" + 11" (279.4)	.38" (9.65)	2
62" (1574.8) to 84" (2133.6)	DIA. "D" + 11" (279.4)	.38" (9.65)	3
86" (2184.4) to 96" (2438.4)	DIA. "D" + 11" (279.4)	.50" (12.7)	3
98" (2489.2) to 128" (3251.2)	DIA. "D" + 11" (279.4)	.63" (16.0)	4

Fitting number	Qty	-D1- Duct dia.	-D1- Ring type	-D2- Ring type	Remarks

Notes:

- 1 Metric equivalents are shown in parenthesis (millimeters or as noted).
- 2 All duct fittings with standard connections include gaskets and clamps or hardware as required for installation.

Remarks:



Company / job reference:

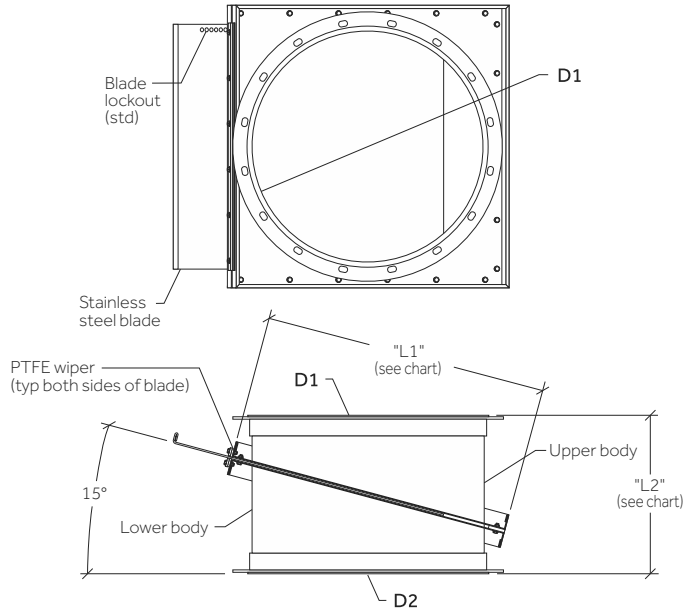
Round Duct Order Sheet
4" (101.6) - 36" (914.4) Vertical Run
Isolation Blastgate

Specifications:

- FRAME: Stainless steel
- RINGS: 4" (101.6) - 14" (355.6) EZ
4" (101.6) - 14" (355.6) Cast stainless steel
16" (406.4) - 36" (914.4) Stainless steel
16" (406.4) - 36" (914.4) Black iron
- BLADE: Lockout system
- COATING: PermaShield fluoropolymer barrier coating

Joints/rings:

- EZ** EZ clamp 4"-14"Ø (101.6 - 355.6)
- SC** Stainless cast ring 4"-14"Ø (101.6 - 355.6)
- BI** Black iron angle ring 16"-120"Ø (406.4 - 3048.0)
- SS** Stainless angle ring 4"-128"Ø (101.6 - 3251.2)



DUCT DIA "D":	OUTSIDE DIM "L1":	FRAME BOLTS:	NO. OF BLADES:	BLADE ANGLE:	LENGTH "L2":
4" (101.6) to 8" (203.2)	DIA. "D" + 4" (101.6)	.31" (7.87)	1	15°	8" (203.2)
10" (254.0) to 16" (406.4)	DIA. "D" + 4" (101.6)	.31" (7.87)	1	15°	12" (304.8)
18" (457.2) to 36" (914.4)	DIA. "D" + 4.5" (114.3)	.31" (7.87)	1	15°	16" (406.4)

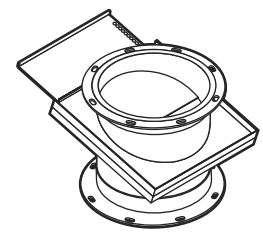
Fitting number	Qty	- D1 - Duct dia.	- D1 - Ring type	- D2 - Ring type	Remarks

Notes:

- 1 Metric equivalents are shown in parenthesis (millimeters or as noted).
- 2 All duct fittings with standard connections include gaskets and clamps or hardware as required for installation.

Remarks:

Company / job reference:



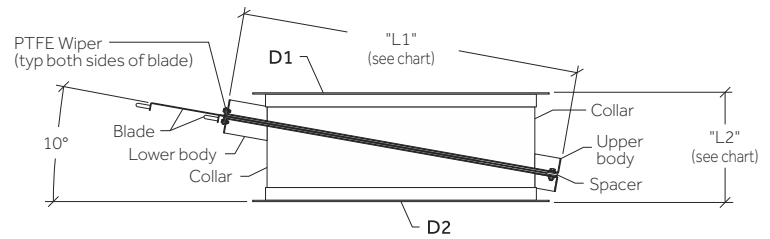
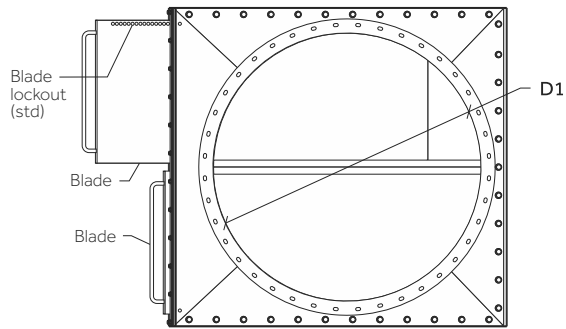
38" (965.2) & Larger Vertical Run Isolation Blastgate

Specifications:

- BODY: Stainless steel
- RINGS: Stainless steel angle rings
- OPTION:** Black iron angle rings
- BLADES: Stainless steel
- BLADE: Lockout system
- COATING: PermaShield fluoropolymer barrier coating

Joints/rings:

- EZ** EZ clamp 4"-14"Ø (101.6 - 355.6)
- SC** Stainless cast ring 4"-14"Ø (101.6 - 355.6)
- BI** Black iron angle ring 16"-120"Ø (406.4 - 3048.0)
- SS** Stainless angle ring 4"-128"Ø (101.6 - 3251.2)



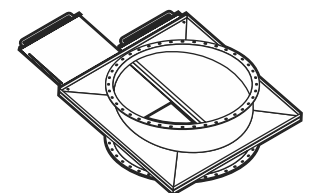
DUCT DIA "D":	OUTSIDE DIM "L1":	FRAME BOLTS:	NO. OF BLADES:	BLADE ANGLE:	LENGTH "L2":
38" (965.2) to 46" (1168.4)	DIA. "D" + 10" (254.0)	.31" (7.87)	2	10°	16" (406.4)
48" (1219.2) to 60" (1524.0)	DIA. "D" + 11" (279.4)	.38" (9.65)	2	10°	24" (609.6)
62" (1574.8) to 84" (2133.6)	DIA. "D" + 11" (279.4)	.38" (9.65)	3	10°	24" (609.6)

Fitting number	Qty	- D1 - Duct dia.	-D1- Ring type	-D2- Ring type	Remarks

Notes:

- 1 Metric equivalents are shown in parenthesis (millimeters or as noted).
- 2 Vertical run blastgates greater than 84" (2133.6) require engineering review and approval.
- 3 All duct fittings with standard connections include gaskets and clamps or hardware as required for installation.

Remarks:



Company / job reference:

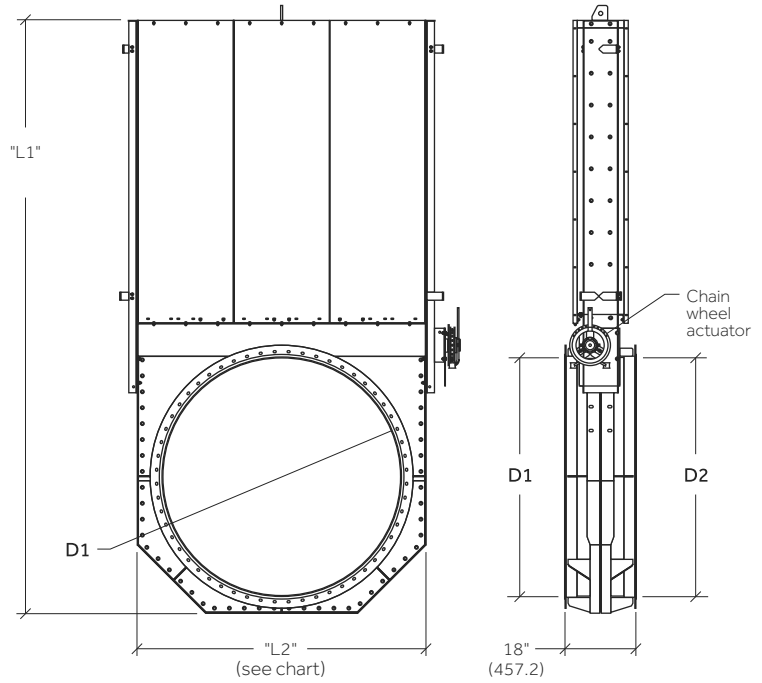
16" (406.4) - 36" (914.4) Horizontal Run Actuated Isolation Blastgate

Specifications:

- BODY: Stainless steel
- RINGS: Stainless steel angle rings
- OPTION:** Black iron angle rings
- BLADE: Stainless steel w/ lock out system
- COATING: PermaShield fluoropolymer barrier coating
- POSITION INDICATOR: Exterior
- ACTUATOR: Manual chain wheel
- OPTION:** Bellows enclosed lead screw for additional corrosion resistance (adds to L1 length)

Joints/rings:

- EZ** EZ clamp 4"-14"Ø (101.6 - 355.6)
- SC** Stainless cast ring 4"-14"Ø (101.6 - 355.6)
- BI** Black iron angle ring 16"-120"Ø (406.4 - 3048.0)
- SS** Stainless angle ring 4"-128"Ø (101.6 - 3251.2)



DUCT DIA "D":	OUTSIDE DIM "L1":	FRAME BOLTS:	NO. OF BLADES:	LENGTH "L2":
16" (406.4) to 36" (914.4)	2x"D" + 30" (762.0)	.38" (9.65)	1	"D" + 12.5" (317.5)

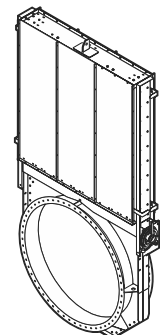
Fitting number	Qty	- D1 - Duct dia.	-D1- Ring type	-D2- Ring type	Remarks

Notes:

- 1 Metric equivalents are shown in parenthesis (millimeters or as noted).
- 2 Horizontal run blastgates greater than 88" (2235.2) require engineering review and approval.
- 3 All duct fittings with standard connections include gaskets and clamps or hardware as required for installation.

Remarks:

Company / job reference:



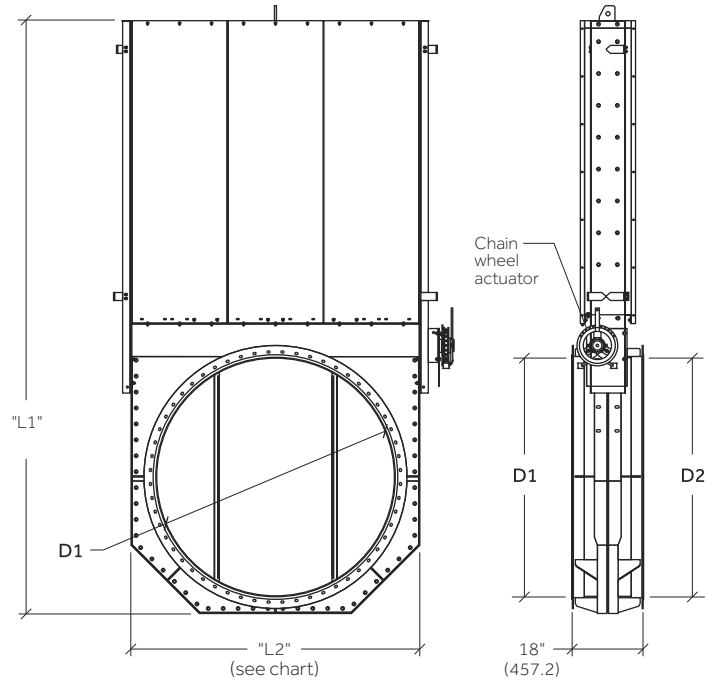
38" (965.2) & Larger Horizontal Run Actuated Isolation Blastgate

Specifications:

- BODY: Stainless steel
- RINGS: Stainless steel angle rings
- OPTION:** Black iron angle rings
- BLADES: Stainless steel
- COATING: PermaShield fluoropolymer barrier coating
- POSITION INDICATOR: Exterior
- ACTUATOR: Manual chain wheel
- OPTION:** Bellows enclosed lead screw for additional corrosion resistance (adds to L1 length)

Joints/rings:

- EZ** EZ clamp 4"-14"Ø (101.6 - 355.6)
- SC** Stainless cast ring 4"-14"Ø (101.6 - 355.6)
- BI** Black iron angle ring 16"-120"Ø (406.4 - 3048.0)
- SS** Stainless angle ring 4"-128"Ø (101.6 - 3251.2)



DUCT DIA "D":	OUTSIDE DIM "L1":	FRAME BOLTS:	NO. OF BLADES:	LENGTH "L2":
38" (965.2) to 64" (1625.6)	2x"D" + 30" (762.0)	.38" (9.65)	1	"D" + 12.5" (317.5)
66" (1676.4) to 88" (2235.2)	2x"D" + 30" (762.0)	.43" (10.92)	1	"D" + 12.5" (317.5)

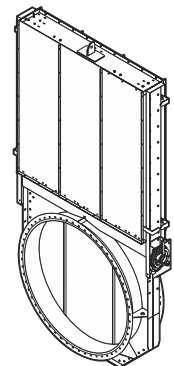
Fitting number	Qty	-D1- Duct dia.	-D1- Ring type	-D2- Ring type	Remarks

Notes:

- 1 Metric equivalents are shown in parenthesis (millimeters or as noted).
- 2 Horizontal run blastgates greater than 88" (2235.2) require engineering review and approval.
- 3 All duct fittings with standard connections include gaskets and clamps or hardware as required for installation.

Remarks:

Company / job reference:



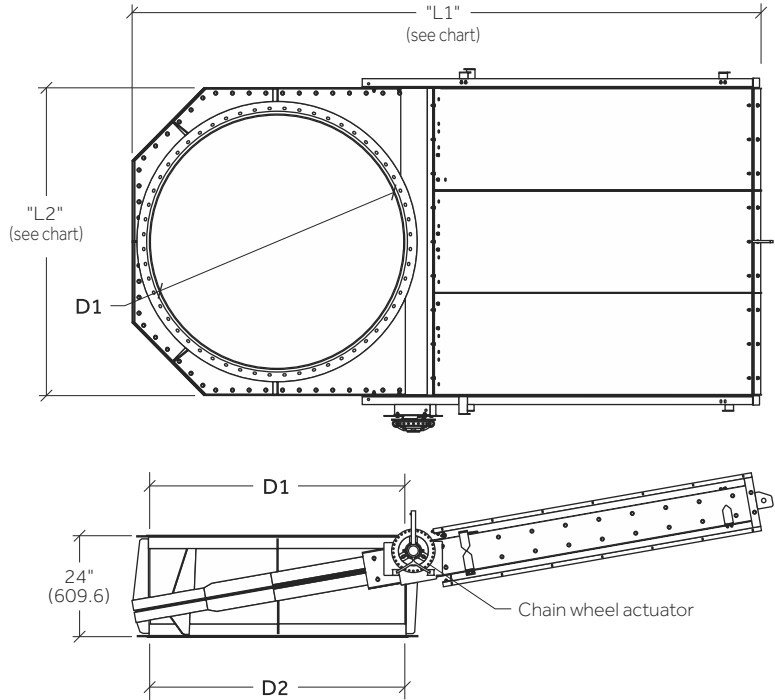
16" (406.4) - 36" (914.4) Vertical Run Actuated Isolation Blastgate

Specifications:

- BODY: Stainless steel
- RINGS: Stainless steel angle rings
- OPTION:** Black iron angle rings
- BLADES: Stainless steel
- COATING: PermaShield fluoropolymer barrier coating
- POSITION INDICATOR: Exterior
- ACTUATOR: Manual chain wheel
- OPTION:** Bellows enclosed lead screw for additional corrosion resistance (adds to L1 length)

Joints/rings:

- EZ** EZ clamp 4"-14"Ø (101.6 - 355.6)
- SC** Stainless cast ring 4"-14"Ø (101.6 - 355.6)
- BI** Black iron angle ring 16"-120"Ø (406.4 - 3048.0)
- SS** Stainless angle ring 4"-128"Ø (101.6 - 3251.2)



DUCT DIA "D":	OUTSIDE DIM "L1":	FRAME BOLTS:	NO. OF BLADES:	BLADE ANGLE:	LENGTH "L2":
16" (406.4) to 36" (914.4)	2x"D" + 30" (762.0)	.38" (9.65)	1	10°	"D" + 12.5" (317.5)

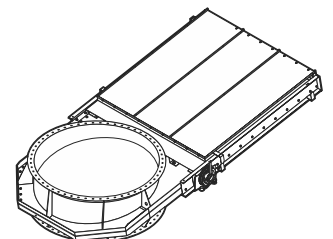
Fitting number	Qty	- D1 - Duct dia.	-D1- Ring type	-D2- Ring type	Remarks

Notes:

- 1 Metric equivalents are shown in parenthesis (millimeters or as noted).
- 2 Vertical run blastgates greater than 88" (2235.2) require engineering review and approval.
- 3 All duct fittings with standard connections include gaskets and clamps or hardware as required for installation.

Remarks:

Company / job reference:



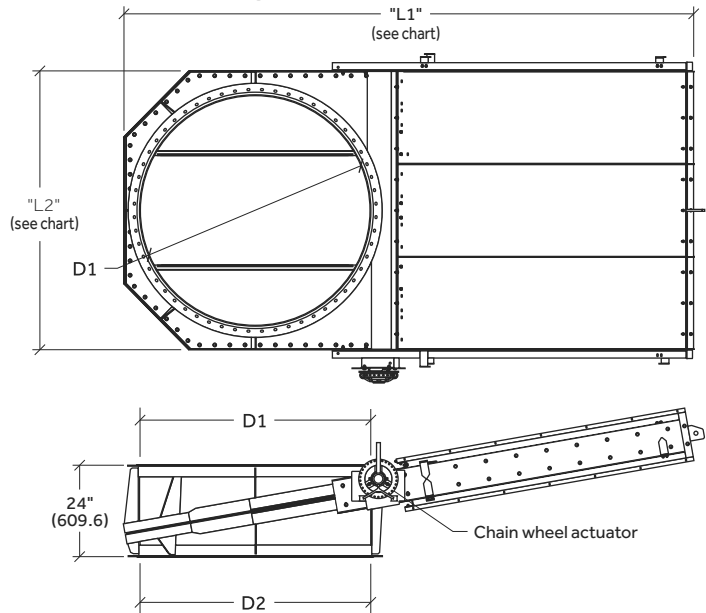
38" (965.2) & Larger Vertical Run Actuated Isolation Blastgate

Specifications:

- BODY: Stainless steel
- RINGS: Stainless steel angle rings
- OPTION:** Black iron angle rings
- BLADES: Stainless steel
- COATING: PermaShield fluoropolymer barrier coating
- POSITION INDICATOR: Exterior
- ACTUATOR: Manual chain wheel
- OPTION:** Bellows enclosed lead screw for additional corrosion resistance (adds to L1 length)

Joints/rings:

- EZ** EZ clamp 4"-14"Ø (101.6 - 355.6)
- SC** Stainless cast ring 4"-14"Ø (101.6 - 355.6)
- BI** Black iron angle ring 16"-120"Ø (406.4 - 3048.0)
- SS** Stainless angle ring 4"-128"Ø (101.6 - 3251.2)



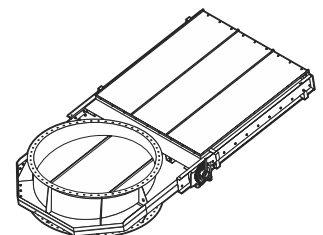
DUCT DIA "D":	OUTSIDE DIM "L1":	FRAME BOLTS:	NO. OF BLADES:	BLADE ANGLE:	LENGTH "L2":
38" (965.2) to 64" (1625.6)	2x"D" + 30" (762.0)	.38" (9.65)	1	10°	"D" + 12.5" (317.5)
66" (1676.4) to 88" (2235.2)	2x"D" + 30" (762.0)	.43" (10.92)	1	10°	"D" + 12.5" (317.5)

Fitting number	Qty	- D1 - Duct dia.	-D1- Ring type	-D2- Ring type	Remarks

Notes:

- 1 Metric equivalents are shown in parenthesis (millimeters or as noted).
- 2 Vertical run blastgates greater than 88" (2235.2) require engineering review and approval.
- 3 All duct fittings with standard connections include gaskets and clamps or hardware as required for installation.

Remarks:

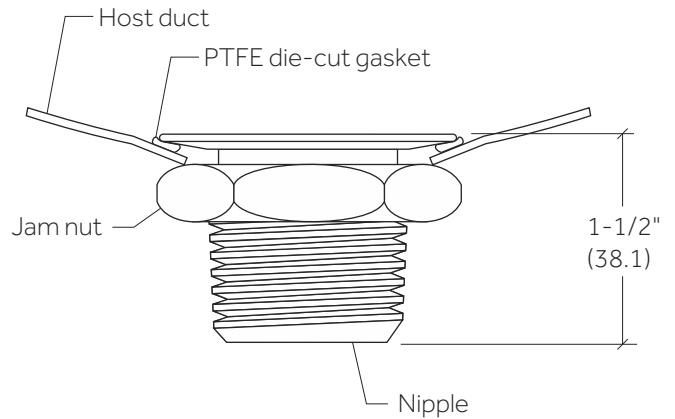


Company / job reference:

*Swage Kit required to install nipple

See swage kit order sheet
Only one kit is required to install multiple nipples

PART NUMBER*	DESCRIPTION
TPS01	Manual kit for FOR 1" (25.4)
TPS02	Hydraulic kit for 1" (25.4) & 2" (50.8)



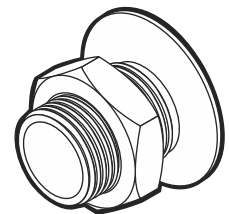
Fitting number	Part number	Qty	Description
	PRT01		1" (25.4) NPT nipple - 6" (152.4) diameter duct min - 16 GA (1.59) max
	PRT02		2" (50.8) NPT nipple - 10" (254.0) diameter duct min - 16 GA (1.59) max

Notes:

- 1 Metric equivalents are shown in parenthesis (millimeters or as noted).
- 2 Refer to the Installation and Assembly Guide.
- 3 All duct fittings with standard connections include gaskets and clamps or hardware as required for installation.

Remarks:

Company / job reference:



Specifications:

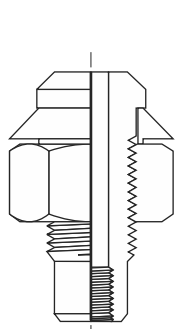
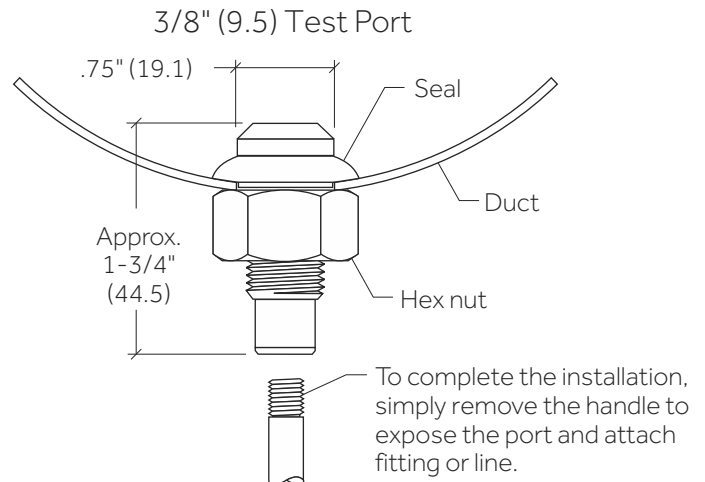
NIPPLE: Pure PVDF, seal made of Viton®

HEX NUT: Stainless steel

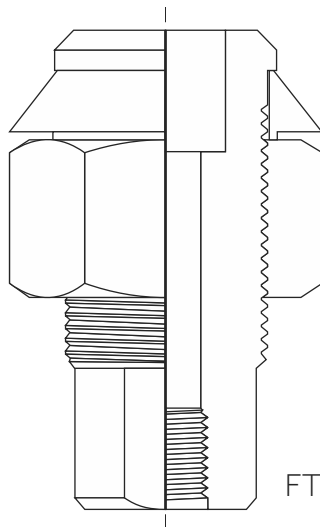
OPTION: Redrill thru hole to slightly larger size

OPTION: Drill and tap test port for female threads

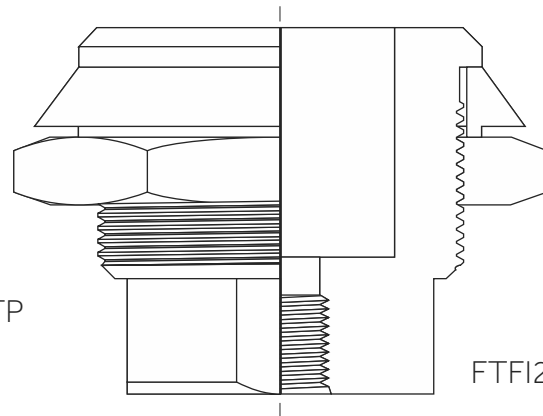
SEAL: Liquid tight - does not compromise the integrity of the interior coating



FTFI38TP



FTFI34TP



FTFI20TP

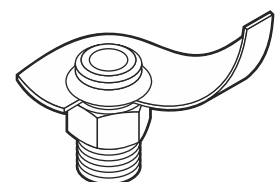
Fitting number	Part number	Qty	Description
	FTFI38TP		1/4" (6.35) THRU HOLE MOLDED TEST PORT - 2" (50.8) DIA. DUCT MIN.
	FTFI34TP		1/2" (12.7) THRU HOLE MOLDED TEST PORT - 6" (152.4) DIA. DUCT MIN.
	FTFI20TP		9/16" (14.3) THRU HOLE MOLDED TEST PORT - 12" (304.8) DIA. DUCT MIN.

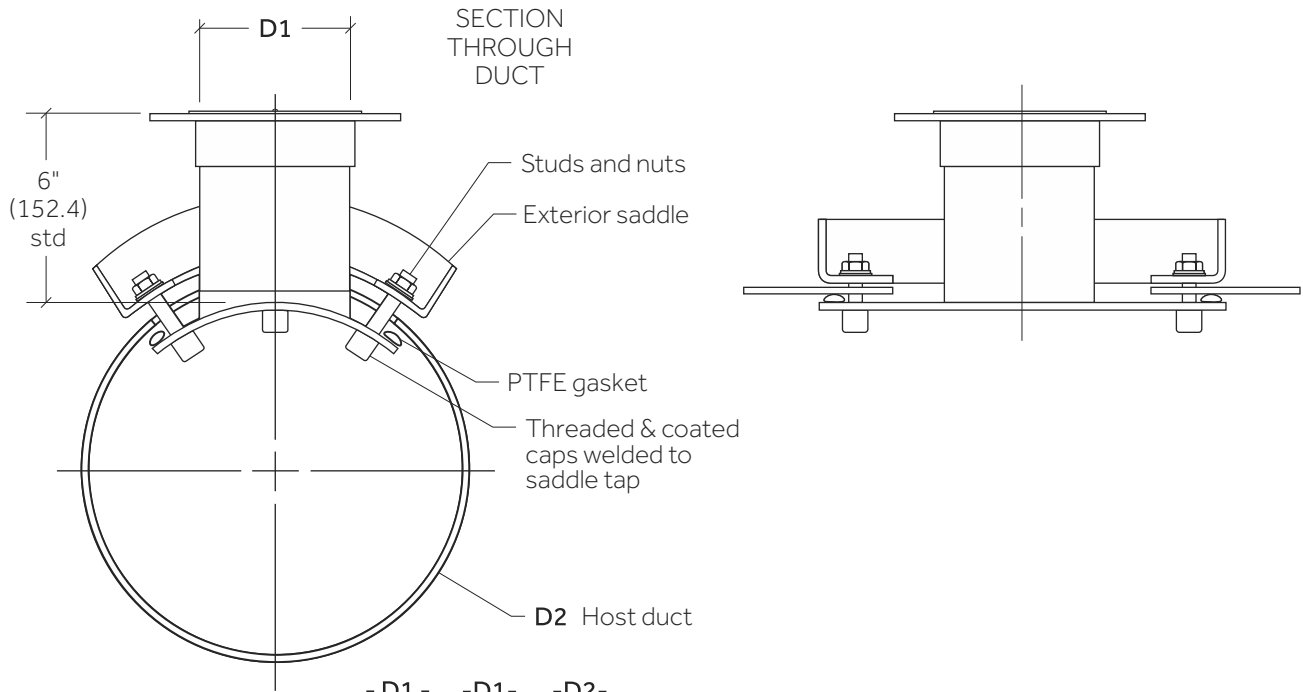
Notes:

- 1 Metric equivalents are shown in parenthesis (millimeters or as noted).
- 2 The unique handle design of this test port allows it to be installed quickly and easily in-the-field with common tools and without system shutdown or disassembly.
- 3 Refer to the catalog Installation and Assembly Guide.
- 4 All duct fittings with standard connections include gaskets and clamps or hardware as required for installation.

Remarks:

Company / job reference:

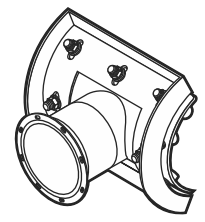




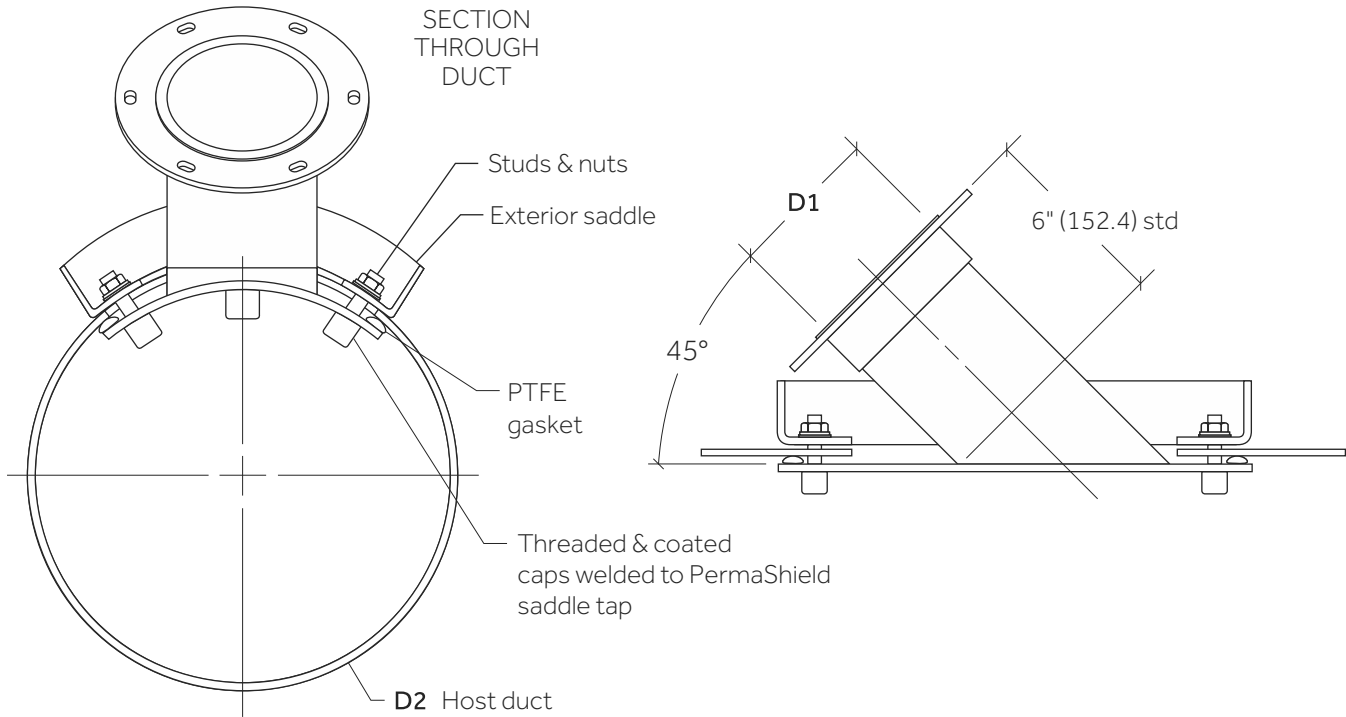
Fitting number	Qty	-D1- Duct dia.	-D1- Ring type	-D2- Ring type	Required information: host duct I.D., wall thickness & material type

- Notes:
- 1 Metric equivalents are shown in parenthesis (millimeters or as noted).
 - 2 The straight saddle tap will allow a new branch line to be installed without shutting down the exhaust system. Straight tap standard, other tap styles available with engineering review and approval.
 - 3 Refer to the catalog Installation and Assembly Guide.
 - 4 All duct fittings with standard connections include gaskets and clamps or hardware as required for installation.

Remarks:



Company / job reference:



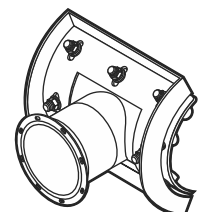
Fitting number	Qty	- D1 - Duct dia.	-D1- Ring type	-D2- Duct dia.	Required information: host duct I.D., wall thickness & material type

Notes:

- 1 **Metric equivalents are shown in parenthesis (millimeters or as noted).**
- 2 Lateral saddle tap will allow a new branch line to be installed without shutting down the exhaust system.
- 3 Refer to the catalog Installation and Assembly Guide.
- 4 All duct fittings with standard connections include gaskets and clamps or hardware as required for installation.

Remarks:

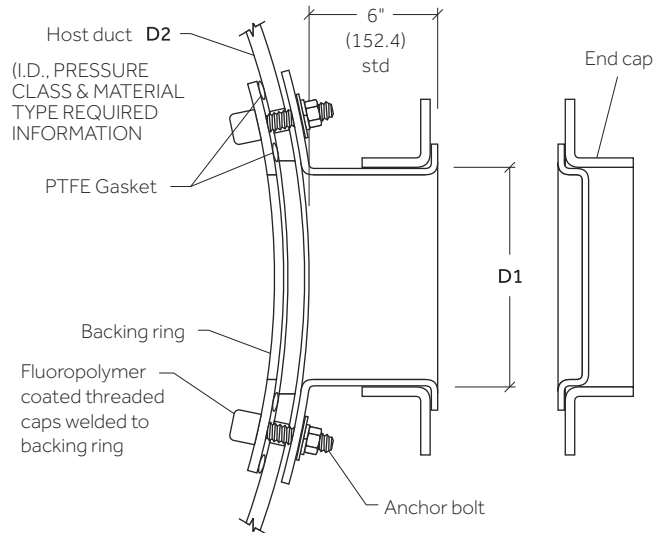
Company / job reference:



Allowable tap size chart:

Tap Size Dia.	Min Host Dia.
4 (101.6)	10 (254.0)
6 (152.4)	10 (254.0)
8 (203.2)	14 (355.6)
10 (254.0)	16 (406.4)
12 (304.8)	20 (508.0)
14 (355.6)	22 (558.8)
16 (406.4)	26 (660.4)
18 (457.2)	28 (711.2)
20 (508.0)	32 (812.8)
22 (558.8)	34 (863.6)
24 (609.6)	38 (965.2)
26 (660.4)	40 (1016.0)
28 (711.2)	44 (1117.6)
30 (762.0)	48 (1219.2)
32 (812.8)	50 (1270.0)
34 (863.6)	54 (1371.6)
36 (914.4)	56 (1422.4)
38 (965.2)	60 (1524.0)
40 (1016.0)	62 (1574.8)
42 (1066.8)	66 (1676.4)
44 (1117.6)	68 (1727.2)
46 (1168.4)	72 (1828.8)
48 (1219.2)	74 (1879.6)

SECTION THROUGH DUCT & TAP



Fitting number	Qty	-D1- Duct dia.	-D1- Ring type	-D2- Duct dia.	Required information: host duct I.D., wall thickness & material type

Isolation Boxes

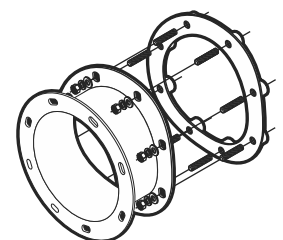
Fitting number	Qty	Tap dia.	Host dia.	Required information: host duct I.D., wall thickness & material type

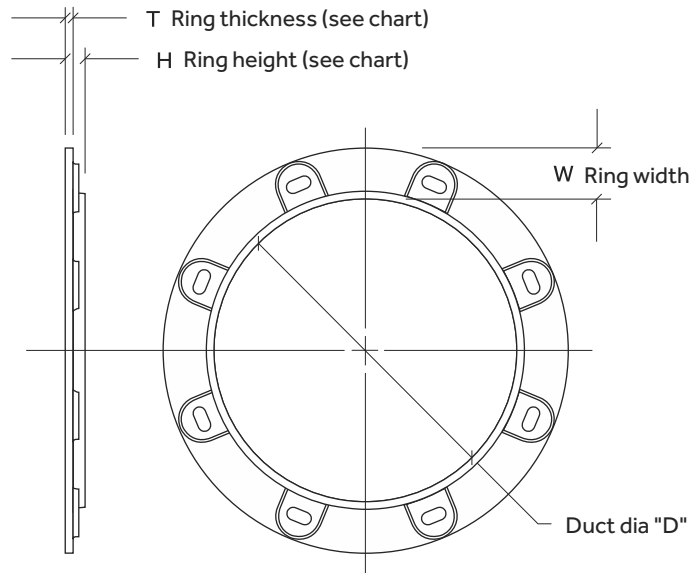
Notes:

- 1 Metric equivalents are shown in parenthesis (millimeters or as noted).
- 2 Straight tap is standard. Isolation box required for installation. Refer to the catalog Installation and Assembly Guide.
- 3 All duct fittings with standard connections include gaskets and clamps or hardware as required for installation.

Remarks:

Company / job reference:





Cast ring specifications:

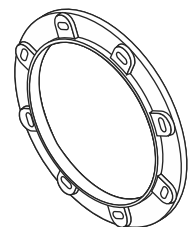
Duct dia. "D"	Width (W)	Height (H)	Thickness (T)	# Holes	Bolt hole size	Bolt size	Bolt circle dia.
4 (101.6)	1-1/4 (31.8)	13/32 (10.3)	1/8 (3.2)	6	7/16 x 11/16 (11.1 x 17.5)	3/8 (9.5)	5.31 (134.9)
6 (152.4)	1-1/4 (31.8)	13/32 (10.3)	1/8 (3.2)	6	7/16 x 11/16 (11.1 x 17.5)	3/8 (9.5)	7.50 (190.5)
8 (203.2)	1-1/4 (31.8)	13/32 (10.3)	1/8 (3.2)	8	7/16 x 11/16 (11.1 x 17.5)	3/8 (9.5)	9.50 (241.3)
10 (254.0)	1-1/4 (31.8)	13/32 (10.3)	1/8 (3.2)	8	7/16 x 11/16 (11.1 x 17.5)	3/8 (9.5)	11.50 (292.1)
12 (304.8)	1-1/2 (38.1)	1/2 (12.7)	3/16 (4.8)	12	9/16 x 3/4 (14.3 x 19.1)	1/2 (12.7)	13.81 (350.8)
14 (355.6)	1-1/2 (38.1)	1/2 (12.7)	3/16 (4.8)	12	9/16 x 3/4 (14.3 x 19.1)	1/2 (12.7)	15.81 (401.6)

Fitting number	Qty	Part number	Description
		RC04	4" (101.6) Dia. - stainless steel cast ring
		RC06	6" (152.4) Dia. - stainless steel cast ring
		RC08	8" (203.2) Dia. - stainless steel cast ring
		RC10	10" (254.0) Dia. - stainless steel cast ring
		RC12	12" (304.8) Dia. - stainless steel cast ring
		RC14	14" (355.6) Dia. - stainless steel cast ring

Notes:

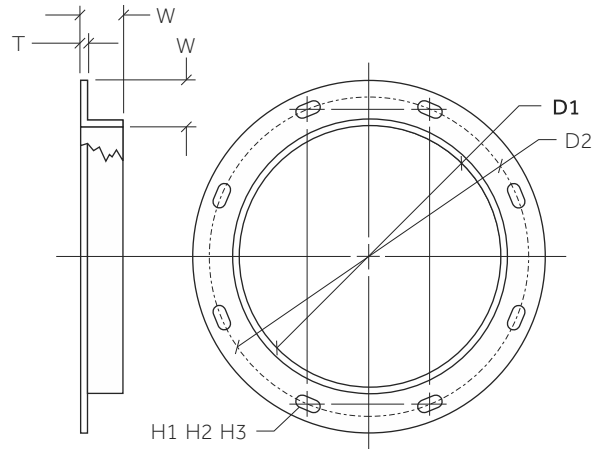
- 1 Metric equivalents are shown in parenthesis (millimeters or as noted).
- 2 All duct fittings with standard connections include gaskets and clamps or hardware as required for installation.

Remarks:



Company / job reference:

DUCT DIA D1	ANGLE RING SPECIFICATIONS						RING MATERIAL & GASKETS		
	WIDTH (W)	THICKNESS (T)	# HOLES (H1)	BOLT HOLE SIZE (H2)	BOLT SIZE (H3)	BOLT CIRCLE DIA. D2	PTFE GASKET W x H	STAINLESS STEEL	BLACK IRON
4 (101.6)	1" (25.4)	1/8" (3.18)	6	7/16" (11.1)	3/8" (9.53)	5.31 (134.87)		SC	
6 (152.4)	1-1/4" (31.8)	1/8" (3.18)	8	7/16" x 11/16" (11.1 x 17.5)	3/8" (9.53)	7.50 (190.5)	GAS09 .01" x .75" (25 x 19.05)	SS	BI
8 (203.2)	1-1/2" (38.1)	1/8" (3.18)	12			9.50 (241.3)			
10 (254.0)			16			11.50 (292.1)			
12 (304.8)	2" (50.8)	3/16" (4.76)	20			13.81 (350.77)			
14 (355.6)			24			15.81 (401.57)			
16 (406.4)			28			17.76 (451.10)			
18 (457.2)			32			19.76 (501.9)			
20 (508.0)	3" (76.2)	1/4" (6.35)	36			21.76 (552.7)			
22 (558.8)			40			23.88 (606.55)			
24 (609.6)			44			25.88 (657.35)			
26 (660.4)			48			27.88 (708.15)			
28 (711.2)			52			29.88 (758.95)			
30 (762.0)			56			31.88 (809.75)			
32 (812.8)			60			33.88 (860.55)			
34 (863.6)			64			35.88 (911.35)			
36 (914.4)	4" (101.6)	1/2" (12.7)	68			37.88 (962.15)			
38 (965.2)			72	40.38 (1025.65)					
40 (1016.0)			76	42.38 (1076.45)					
42 (1066.8)			80	44.38 (1127.25)					
44 (1117.6)			84	46.38 (1178.05)					
46 (1168.4)			88	48.38 (1228.85)					
48 (1219.2)			92	50.38 (1279.65)					
50 (1270.0)			96	52.88 (1343.15)					
52 (1320.8)			100	54.88 (1393.95)					
54 (1371.6)			104	56.88 (1444.75)					
56 (1422.4)			108	58.88 (1495.55)					
58 (1473.2)			112	60.88 (1546.35)					
60 (1524.0)	116	62.88 (1597.15)							
62 (1574.8)			64.88 (1647.95)						
64 (1625.6)			66.88 (1698.75)						
66 (1676.4)			68.88 (1749.55)						
68 (1727.2)			70.88 (1800.35)						
70 (1778.0)			72.88 (1851.15)						
72 (1828.8)			74.88 (1901.95)						
74 (1879.6)			76.88 (1952.75)						
76 (1930.4)			78.88 (2003.55)						
78 (1981.2)			80.88 (2054.35)						
80 (2032.0)			82.88 (2105.15)						
82 (2082.8)			84.88 (2155.95)						
84 (2133.6)			86.88 (2206.75)						
86 (2184.4)			89.38 (2270.25)						
88 (2235.2)			91.38 (2321.05)						
90 (2286.0)			93.38 (2371.85)						
92 (2336.8)			95.38 (2422.65)						
94 (2387.6)			97.38 (2473.45)						
96 (2438.4)			100.38 (2549.65)						
98 (2489.2)			102.38 (2600.45)						
100 (2540.0)			104.38 (2651.25)						
102 (2590.8)			106.38 (2702.05)						
104 (2641.6)			108.38 (2752.85)						
106 (2692.4)			110.38 (2803.65)						
108 (2743.2)			112.38 (2854.45)						
110 (2794.0)			114.38 (2905.25)						
112 (2844.8)			116.38 (2956.05)						
114 (2895.6)			118.38 (3006.85)						
116 (2946.4)			120.38 (3057.65)						
118 (2997.2)			122.38 (3108.45)						
120 (3048.0)			124.38 (3159.25)						



Fitting number		Qty	- D1 - Duct dia.	Type BI or SS

Specifications:

- HOLES: Slotted holes standard
- HOLE PATTERN: Straddle vertical centerline, standard for fixed rings
- ANGLE FLANGES: Standard, flat rings not recommended
- FLANGE: Width and thickness vs duct size are standard, see mechanical specifications in the standards section of the catalog
- OPTION: Custom rings for additional charge

Joints/rings:

- BI** Black iron angle ring 16"-120"Ø (406.4 - 3048.0)
- SS** Stainless angle ring 4"-128"Ø (101.6 - 3251.2)

Notes:

- 1 Metric equivalents are shown in parenthesis (millimeters or as noted).
- 2 All duct fittings with standard connections include gaskets and clamps or hardware as required for installation.

Remarks:

Company / job reference:



Specifications:

SIZE: 4" (101.6) dia. - 128" (3251.2) dia.

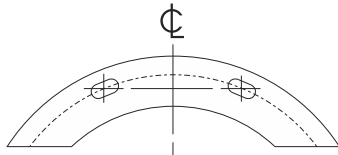
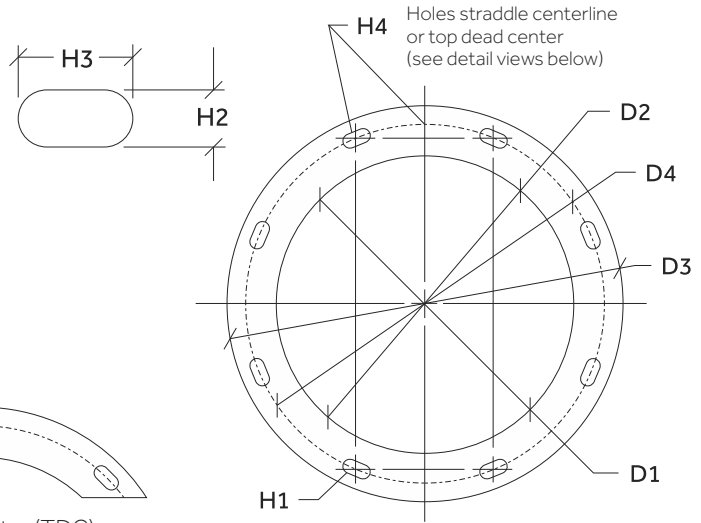
MATERIAL: Stainless steel

HOLES: Slotted holes standard

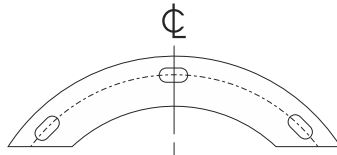
HOLE PATTERN ORIENTATION: Vertical centerline or straddle vertical centerline

FLANGE: Width and thickness, use standard angle sizes, see mechanical specifications in the standards section of the product catalog, oversized angle ring may be required to accommodate bolt hole pattern

FLANGE: All custom rings are stainless steel and welded solid



Straddle centerline (std)



Top dead center (TDC)

Reference fitting	Qty	EXENTIAL INTERNAL USE ONLY							Burn Make Buy	-D2- Ring I.D.	-D3- Ring O.D.	Angel/ Material Gauge	Collar Y/N
		-D1- Duct dia.	-D4- Bolt circle dia.	-H1- No. of holes	-H2- Hole dia.	-H3- Hole length	-H4- Hole orientation STR or TDC						

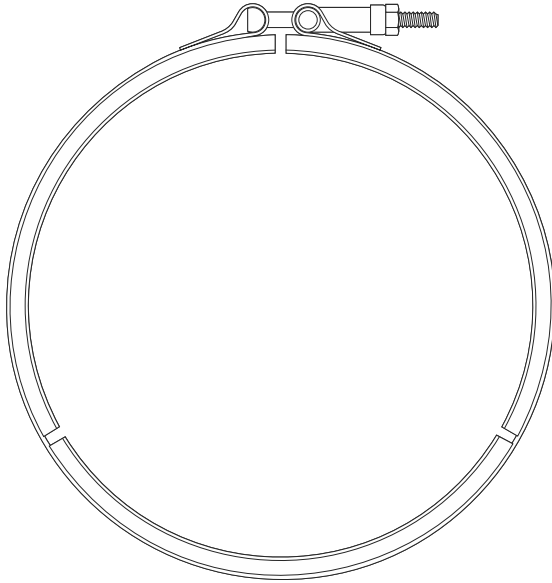
Notes:

- Metric equivalents are shown in parenthesis (millimeters or as noted).
- All duct fittings with standard connections include gaskets and clamps or hardware as required for installation. Duct fittings with custom or non-standard connections do not include gaskets, clamps or hardware.

Remarks:



Company / job reference:



The EZ joining system is available for standard PermaShield duct from 4" (101.6) to 14" (355.6) in diameter. The combination of half round backing rings and the unique angled clamp band provides excellent clamping force with the added benefit of ease of installation.

Each kit contains a clamp, PTFE tape gasket, and two backing rings.

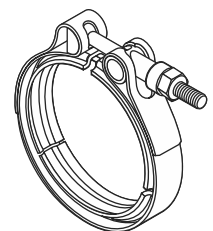
Fitting number	Part number	Qty	Description
	CL004KT		Clamp kit for 4" (101.6) dia duct
	CL004		Clamp only
	CL006KT		Clamp kit for 6" (152.4) dia duct
	CL006		Clamp only
	CL008KT		Clamp kit for 8" (203.2) dia duct
	CL008		Clamp only
	CL010KT		Clamp kit for 10" (254.0) dia duct
	CL010		Clamp only
	CL012KT		Clamp kit for 12" (304.8) dia duct
	CL012		Clamp only
	CL014KT		Clamp kit for 14" (355.6) dia duct
	CL014		Clamp only

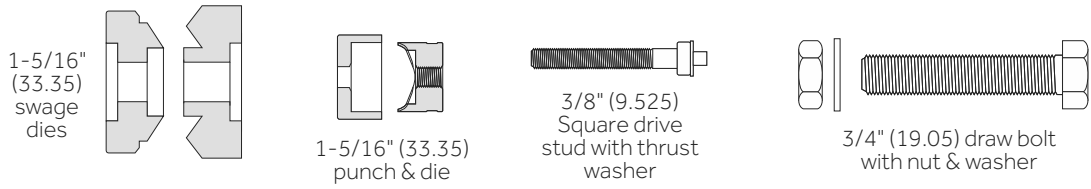
Notes:

- 1 Metric equivalents are shown in parenthesis (millimeters or as noted).
- 2 All duct fittings with standard connections include gaskets and clamps or hardware as required for installation.

Remarks:

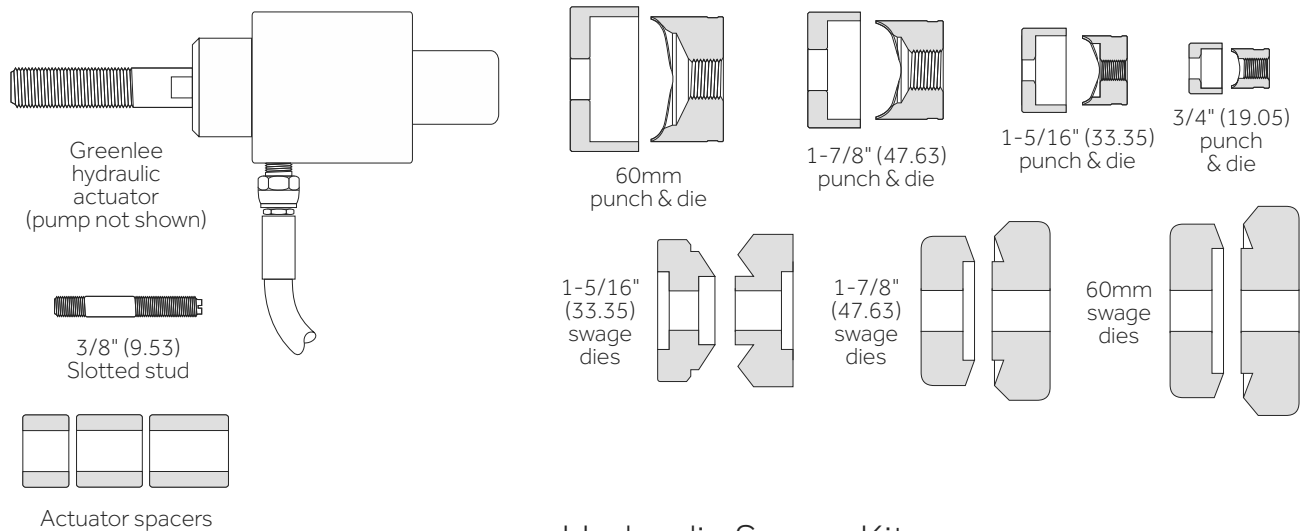
Company / job reference:





Manual Swage Kit

This kit is used for installation of 1" field installed nipples
See Installation and Assembly Guide for installation instructions



Hydraulic Swage Kit

This kit is used for installation of 1" (25.4), 1-1/2" (38.1), & 2" (50.8) field installed nipples
See Installation And Assembly Guide for installation instructions

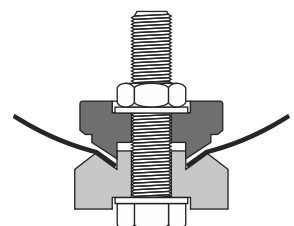
Fitting number	Part number	Qty	Description
	TPS01		Manual kit for 1" (25.4mm) field installed nipple
	TPS02		Hydraulic kit for 1" (25.4mm), 1-1/2" (38.1mm), & 2" (50.8mm) nipple

Notes:

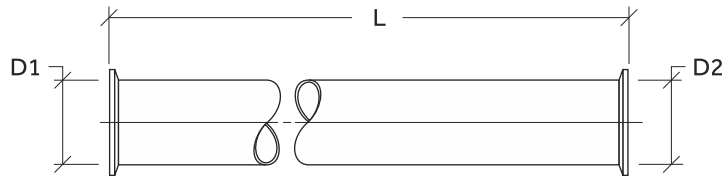
- 1 Metric equivalents are shown in parenthesis (millimeters or as noted).
- 3 All duct fittings with standard connections include gaskets and clamps or hardware as required for installation.

Remarks:

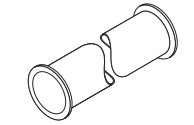
Company / job reference:



Round Duct Order Sheet
**EZ Straight Standard
& Custom Length Duct**

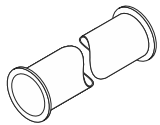


2" (50.8) duct standard straight	Fitting number	Qty	-D1 - Duct dia.	-L1 - Duct length	Indicate custom ring if required D1 or D2	Remarks
			2			
			2			
			2			
			2			
			2			
			2			
			2			
			2			



Standard length is 47.25" (1200.15)

3" (76.2) duct standard straight	Fitting number	Qty	-D1 - Duct dia.	-L1 - Duct length	Indicate custom ring if required D1 or D2	Remarks
			3			
			3			
			3			
			3			
			3			
			3			
			3			
			3			



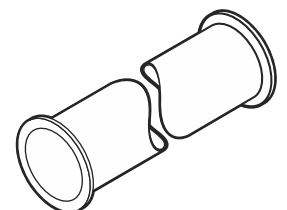
Standard length is 47.25" (1200.15)

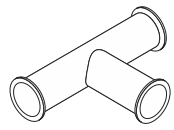
Notes:

- 1 Metric equivalents are shown in parenthesis (millimeters or as noted).
- 2 Refer to the Fab-Tech PermaShield Catalog for specific details and dimensions.
- 3 All duct fittings with standard connections include gaskets and clamps or hardware as required for installation.

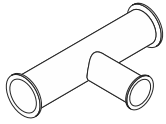
Remarks:

Company / job reference:

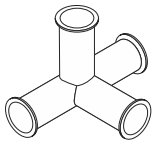




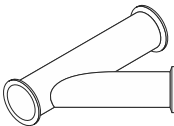
Tee	Fitting number	Part number	Qty	Description
		02T02		2" (50.8) dia line - 2" (50.8) dia EZ tee
		03T03		3" (76.2) dia line - 3" (76.2) dia EZ tee



Reducing tee				
		03T02		3" (76.2) dia line - 2" (50.8) dia EZ reducing tee



Double tee				
		2T2T2		2" (50.8) dia EZ double tee



Lateral				
		02Y02		2" (50.8) dia line - 45° 2" (50.8) dia EZ lateral tee
		03Y03		3" (76.2) dia line - 3" (76.2) dia EZ lateral tee



90° elbow				
		PZE02		2" (50.8) diameter 90° EZ elbow
		PZE03		3" (76.2) diameter 90° EZ elbow



45° elbow				
		PZ502		2" (50.8) diameter 45° EZ elbow
		PZ503		3" (76.2) diameter 45° EZ elbow



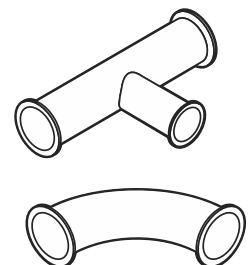
30° elbow				
		PZ302		2" (50.8) diameter 30° EZ elbow
		PZ303		3" (76.2) diameter 30° EZ elbow

Notes:

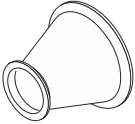
- 1 Metric equivalents are shown in parenthesis (millimeters or as noted).
- 2 Refer to catalog for specific details and dimensions.
- 3 All duct fittings with standard connections include gaskets and clamps or hardware as required for installation.

Remarks:

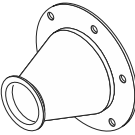
Company / job reference:



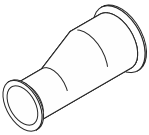
Round Duct Order Sheet
**EZ Reducers, Damper,
Blastgate & End Cap**

Reducer Concentric	Fitting number	Part number	Qty	Description
		PCA42F		4" (101.6) to 2" (50.8) diameter EZ reducer
		PCA43F		4" (101.6) to 3" (76.2) diameter EZ reducer
		PCA32F		3" (76.2) to 2" (50.8) diameter EZ reducer


Reducer concentric angle ring to EZ clamp

		PCA42R		4" (101.6) ring to 2" (50.8) diameter EZ reducer
		PCA43R		4" (101.6) ring to 3" (76.2) diameter EZ reducer
		PCA32R		3" (76.2) ring to 2" (50.8) diameter EZ reducer

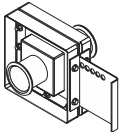
Reducer Eccentric

		PEA42F		4" (101.6) to 2" (50.8) diameter EZ reducer
		PEA43F		4" (101.6) to 3" (76.2) diameter EZ reducer
		PEA32F		3" (76.2) to 2" (50.8) diameter EZ reducer


Damper

		PZD02		2" (50.8) diameter isolation EZ damper
		PZD03		3" (76.2) diameter isolation EZ damper

Blastgate

		PZB02		2" (50.8) diameter horizontal EZ blastgate
		PZB03		3" (76.2) diameter horizontal EZ blastgate
		PZB02V		2" (50.8) diameter vertical EZ blastgate
		PZB03V		3" (76.2) diameter vertical EZ blastgate

End cap

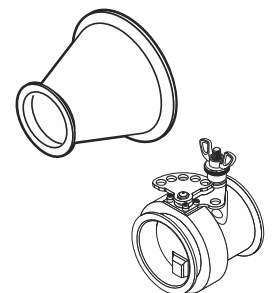
		PZC02		2" (50.8) diameter EZ end cap
		PZC03		3" (76.2) diameter EZ end cap

Notes:

- 1 Metric equivalents are shown in parenthesis (millimeters or as noted).
- 2 Refer to the catalog for specific details and dimensions.
- 3 All duct fittings with standard connections include gaskets and clamps or hardware as required for installation.

Remarks:

Company / job reference:



EZ Clamps, PTFE Gaskets & Field Installed Straight Duct EZ Flange

Clamp kit 2" (50.8)
& 3" (76.2)



Fitting number	Part number	Qty	Description
	CL002KT		2" (50.8) clamp and die cut PTFE gasket
	CL003KT		3" (76.2) clamp and die cut PTFE gasket

Clamp
2" (50.8) & 3" (76.2)



	CI002		2" (50.8) clamp (1 per joint)
	CI003		3" (76.2) clamp (1 per joint)

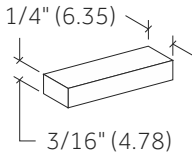
Die cut gasket
2" (50.8) & 3" (76.2)



	GAS11*		2" (50.8) die cut gasket (1 per joint)
	GAS13*		3" (76.2) die cut gasket (1 per joint)

*Adhesive on one side

Rope gasket
1/4" x 3/16"



	GAS03*		For 32" (812.8) - 120" (3048.0) dia round and rectangular duct
--	--------	--	--

* Adhesive on one side

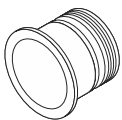
Tape gasket
.01" (.254) thk x .75" (19.1) wide



	GAS09*		For 4" (101.6) - 14" (355.6) EZ joints and 4" (101.6) - 30" (762.0) round duct
--	--------	--	--

* Adhesive on one side

Field installed straight duct
EZ flange



	HTB02		2" (50.8) diameter EZ field flange
	HTB03		3" (76.2) diameter EZ field flange

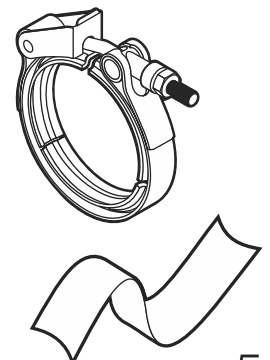
Replacement FT Flange for 2" (50.8) & 3" (76.2) diameter straight duct modified to length in the field, not designed for EZ elbows, tees or reducers - refer to the Installation and Assembly Guide.

Notes:

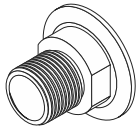
- 1 Metric equivalents are shown in parenthesis (millimeters or as noted).
- 2 All duct and fittings include gasket material for installation. Use this order sheet to order just gasket material. When ordering, please round off quantity to the nearest foot.

Remarks:

Company / job reference:

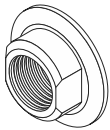


NPT nipple
adapter



Fitting number	Part number	Qty	Description
	FTN18		2" (50.8) FT Flange to 1/8" (3.18) male NPT
	FTN18		2" (50.8) FT Flange to 1/4" (6.35) male NPT
	FTN18		2" (50.8) FT Flange to 3/8" (9.53) male NPT
	FTN12		2" (50.8) FT Flange to 1/2" (12.7) male NPT
	FTN34		2" (50.8) FT Flange to 3/4" (19.05) male NPT
	FTN01		2" (50.8) FT Flange to 1" (25.4) male NPT
	FTN15		2" (50.8) FT Flange to 1-1/2" (38.1) male NPT
	FTN02		2" (50.8) FT Flange to 2" (50.8) male NPT
	FTN03		2" (50.8) FT Flange to 3" (76.2) male NPT
	FTN04		2" (50.8) FT Flange to 4" (101.6) male NPT

NPT female coupler
adapter



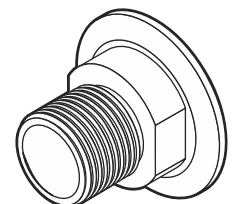
	FTF18		1/8" (3.18) coated on flange face only
	FTF14		1/4" (6.35) coated on flange face only
	FTF38		3/8" (9.53) coated on flange face only
	FTF12		1/2" (12.7) coated on flange face only
	FTF34		3/4" (19.05) coated on flange face only
	FTF01		1" (25.4) coated on flange face only
	FTF15		1-1/2" (38.1) coated on flange face only
	FTF02		2" (50.8) coated on flange face only

Notes:

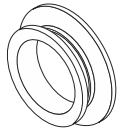
- 1 Metric equivalents are shown in parenthesis (millimeters or as noted).
- 2 Installation of welded FT Flange can be found on Straight Duct w/ Test Port/Drain order sheet. Refer to the catalog for specific details and for fitting dimensions.
- 3 All duct fittings with standard connections include gaskets and clamps or hardware as required for installation.

Remarks:

Company / job reference:



KF flange adapter



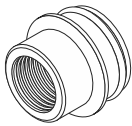
Fitting number	Part number	Qty	Description
	FTK25		2" (50.8) FT Flange to 25mm adapter
	FTK40		2" (50.8) FT Flange to 40mm adapter
	FTK50		2" (50.8) FT Flange to 50mm adapter

Dwyer pitot adapter



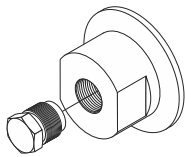
	FTPT2		2" (50.8) FT Flange to pitot adapter
	FTPT3		2" (50.8) FT Flange to pitot adapter

Sprinkler adapter



	FTSP2		2" (50.8) FT Flange to sprinkler adapter - 1" NPT
	FTSP3		3" (76.2) FT Flange to sprinkler adapter - 1" NPT

SWAGELOK® adapter



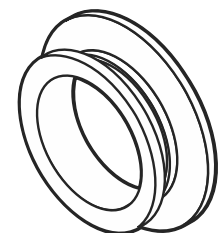
	FTS18		2" (50.8) FT Flange to 1/8" (3.18) Swagelok®
	FTS14		2" (50.8) FT Flange to 1/4" (6.35) Swagelok®
	FTS38		2" (50.8) FT Flange to 3/8" (9.53) Swagelok®
	FTS12		2" (50.8) FT Flange to 1/2" (12.7) Swagelok®
	FTS34		2" (50.8) FT Flange to 3/4" (19.05) Swagelok®

Notes:

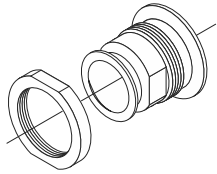
- 1 Metric equivalents are shown in parenthesis (millimeters or as noted).
- 2 Installation of welded FT Flange can be found on Straight Duct w/ Test Port/Drain order sheet. Refer to the catalog for specific details and for fitting dimensions.
- 3 All duct fittings with standard connections include gaskets and clamps or hardware as required for installation.

Remarks:

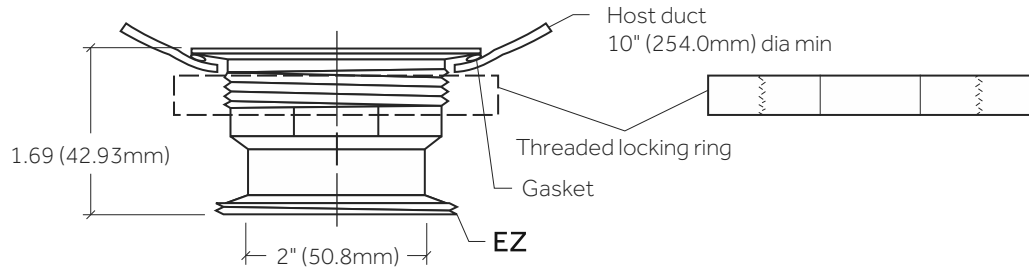
Company / job reference:



Field Installed FT Flange & FT Flange Saddle Taps



Field Installed 2" (50.8) FT Flange	Fitting number	Part number	Qty	-D2- Duct dia.	Description
		FTFL2F			2" (50.8) diameter FT flange

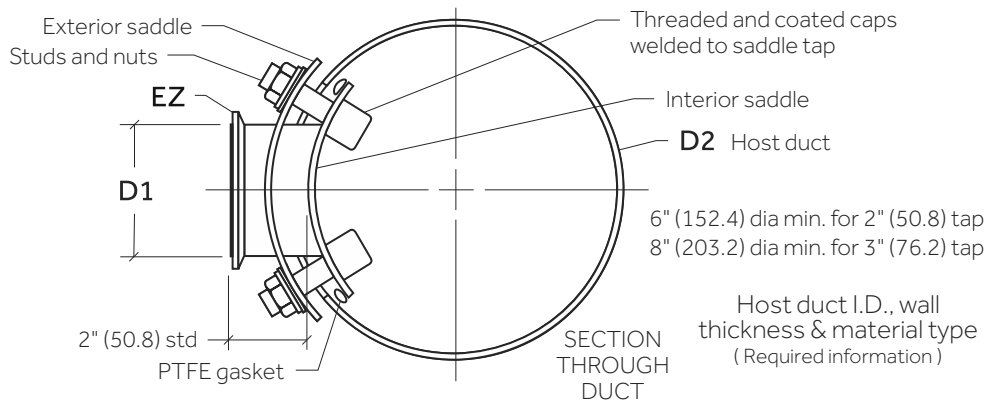
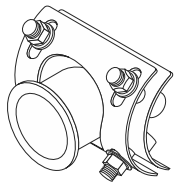


Field Installed FT Flange
2" (50.8) Saddle Tap

	PZQ02			2" (50.8) EZ tap
	Host duct I.D., wall thickness & type:			

Field Installed FT Flange
3" (76.2) Saddle Tap

	PZQ03			3" (76.2) EZ tap
	Host duct I.D., wall thickness & type:			

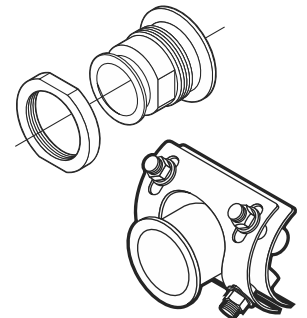


Notes:

- 1 **Metric equivalents are shown in parenthesis (millimeters or as noted).**
- 2 Installation of the field installed FT flange fitting requires duct disassembly and the use of a specialized hydraulic swage kit (PN TRS02). Refer to the Installation and Assembly Guide for specific instructions.
- 3 Exential's installed PermaShield saddle tap will allow a new 2" (50.8) diameter branch to be installed in a 6" (152.4) and larger diameter duct or a new 3" (76.2) diameter branch to be installed in an 8" (203.2) and larger diameter duct without shutting down the exhaust system. Refer to the Installation and Assembly Guide for detailed instructions.
- 4 All duct fittings with standard connections include gaskets and clamps or hardware as required for installation.

Remarks:

Company / job reference:



Qty	Part number	Description
<input type="checkbox"/>	WISE2	Saw guide for cutting 2" (50.8) duct
<input type="checkbox"/>	WISE3	Saw guide for cutting 3" (76.2) duct
<input type="checkbox"/>	PIPE-CUTTER	RIDGID Model S3 heavy duty pipe cutter
<input type="checkbox"/>	D0700	Custom pressing wheel adapter
<input type="checkbox"/>	PEXTO	PEXTO Model 622 hand flanger - order 2 rolling dies
<input type="checkbox"/>	PEXTO DIE	Custom rolling die for PEXTO hand flanger (not a set)
<input type="checkbox"/>	EZVGRIP	EZ Pliers
<input type="checkbox"/>	RKITPSP	PermaShield field repair kit (directions & repair sheet only)
<input type="checkbox"/>	HEATGUN	BOSCH 120V heat gun
<input type="checkbox"/>	SPARK-DES	D.E. Sterns spark tester
<input type="checkbox"/>	VOLT-CONVERT	Voltage converter, 220-110, 1000V, 60HZ
<input type="checkbox"/>	TPS01	Manual kit for 1" (25.4) field installed nipple
<input type="checkbox"/>	TPS02	Hydraulic kit for 1" (25.4), 1-1/2" (38.1), & 2" (50.8) field install nipple and for 2" (50.8) field install FT flange
<input type="checkbox"/>	DCS374B	DEWALT portable hand held band saw: 44-7/8" (1140) blade L.20VDC
<input type="checkbox"/>	DCB205CK	DEWALT 20V max battery, battery charger, carry bag

Notes:

- 1 Metric equivalents are shown in parenthesis (millimeters or as noted).
- 2 All duct fittings with standard connections include gaskets and clamps or hardware as required for installation.

Remarks:

Company / job reference:

Exential U.S. Inc. | T 802-655-8800 | F 802-655-8804 | www.exentec.net/products/process-exhaust

© COPYRIGHT 2025 EXENTIAL U.S. INC. REV: 09/30/25 RND056BG

