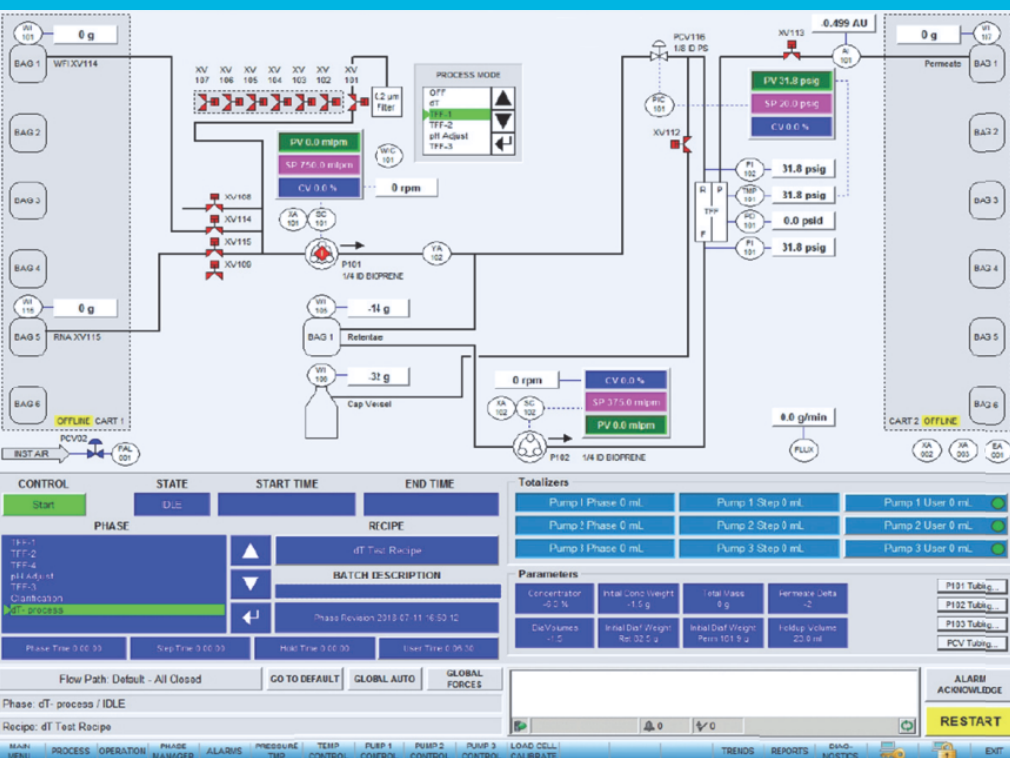


Process Control Interface (PCI) Automation System

exentec

BioPharma Solutions

Pharmaceutical /
Biopharmaceutical



Exentec Process Control Interface (PCI) is a highly flexible open-source automation system available on all Exentec process skids.

DESCRIPTION | FEATURES | BENEFITS | SPECIFICATIONS

HMI:

Rockwell Factory Talk View SE with Windows

- Provides the touch screen operator interface to the control System
- Graphical animated P&ID always visible with status and faceplate displays for all detailed control functions
- Valves, pumps, instrument valves, discrete devices, flow paths are all dynamically displayed
- Trends (real-time and historical)
- Alarm and event summary
- Phase control and status
- Diagnostic and configuration functions
- System Security (can be linked to Windows)

Phases and Recipes

Phase Manager

- Used to create and edit phases
- Phases can be linked together to form an operation
- Uses can be S88 State Model

- Every function is defined for each step in the phase sequence including:

- Step description
- Flow path

- All control loop modes and set points
- Analog alarm enable/disable
- mpt (information or question)
- Restart step

Recipe Editor:

Defines control set points, alarm set points and transition variables used by the phase. All set points can be defined in the phase or use the recipe variables on a step-by-step basis.

Report Client

Used to view reports. Data retrieved from secure SQL server database. Query by batch ID or date/time. Print and/or save report for viewing in Microsoft Excel.

Please contact our sales department for details or for a quote.
Email: sales@bpesys.com Phone: 978-483-0943