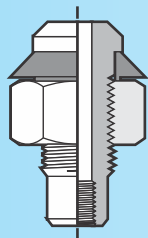
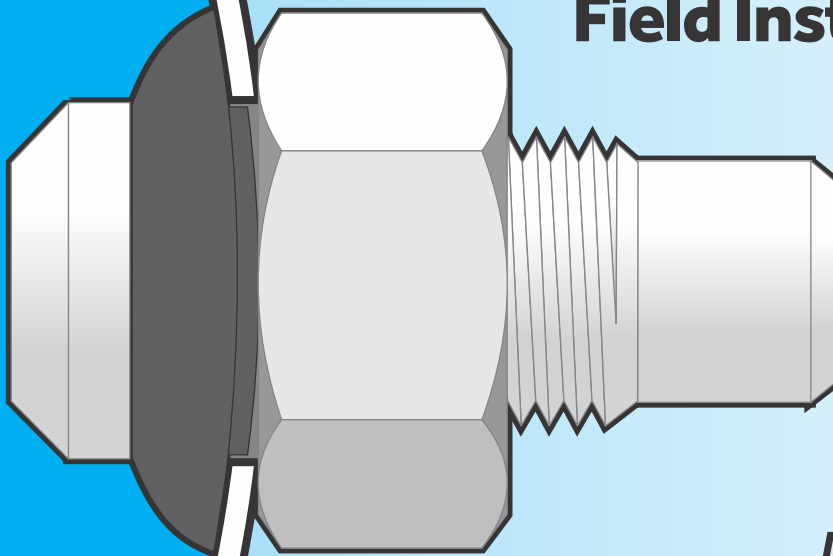


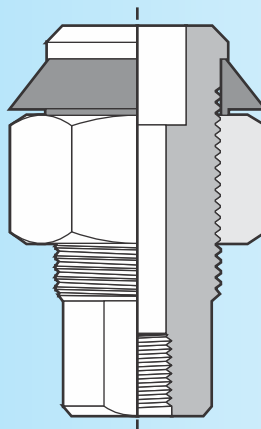
Fast & Easy

Field Installed Test Port from Fab-Tech

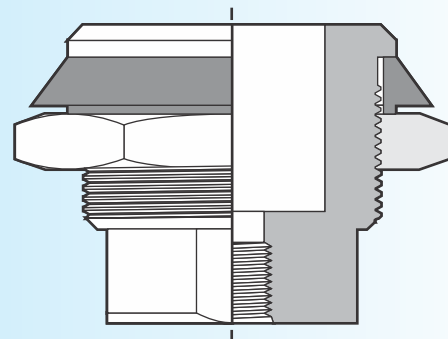
*Drill,
Insert Port,
Insert &
Seat Seal,
Tighten Nut,
Remove Handle*
It's that easy!



FTFI38TP
3/8" Test Port



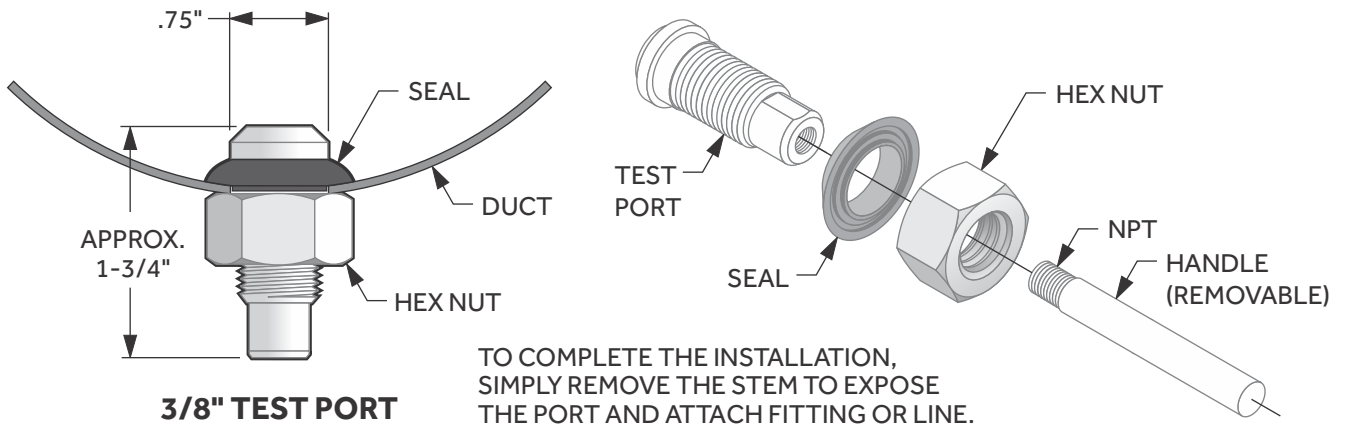
FTFI34TP
3/4" Test Port



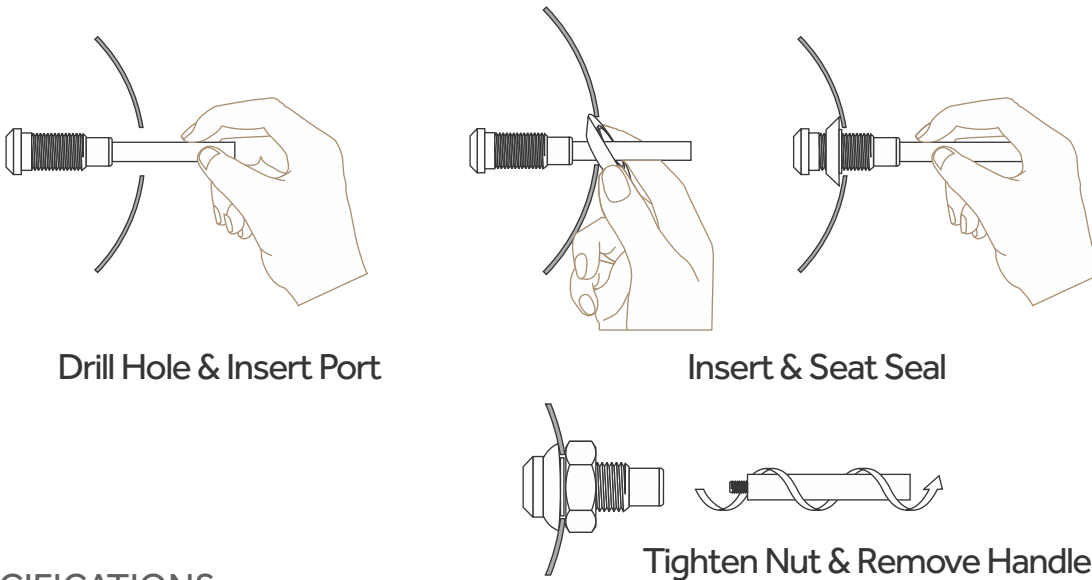
FTFI20TP
2" Test Port

The unique threaded handle design of this test port allows it to be installed quickly and easily in-the-field with common tools and without system **shutdown** or **disassembly**!

Fab-Tech
An Exyte Group Company



PART NO.	DESCRIPTION	MIN. HOST DUCT	THRU HOLE	REDRILL	I.D. TAP HOLE
FTFI38TP	3/8" TEST PORT	2" DIA. DUCT MIN.	1/4" DIA.	3/8" MAX	1/16" NPT
FTFI34TP	3/4" TEST PORT	6" DIA. DUCT MIN.	1/2" DIA.	3/4" MAX	1/4" NPT
FTFI20TP	2" TEST PORT	12" DIA. DUCT MIN.	9/16" DIA.	1-3/4" MAX	3/8" NPT



SPECIFICATIONS

Nipple made of pure PVDF, seal made of Viton®

Stainless steel hex nut

Able to redrill through hole to slightly larger hole or drill and tap test port for female threads

Installs in duct as small as 2" diameter using the 3/8" field installed test port

Provides liquid tight seal - does not compromise the integrity of the duct interior coating

Contact us today for more information:

Call: 802-655-8800

Fax: 802-655-8804

Website: www.fabtechinc.com

Email: sales@fabtechinc.com

Fab-Tech

An Exyte Group Company

Fab-Tech, Inc.
480 Hercules Drive
Colchester, VT 05446-6800 USA

PSP® is a registered trademark of Fab-Tech, Inc.
Technical information contained in this document is subject to change without notice.