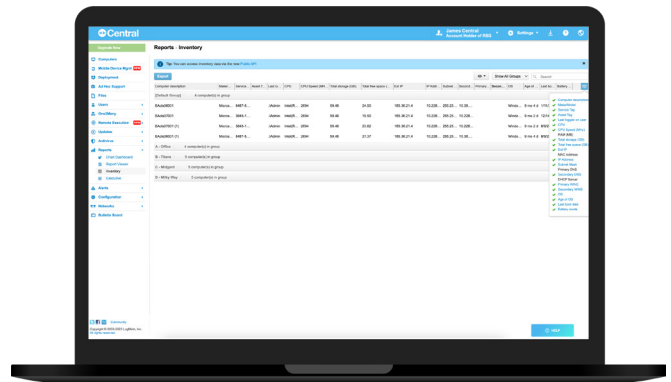


Insight Module

Gain better visibility to keep a constant pulse on your endpoints and stay secure.

Central offers the flexibility and freedom to choose what modules work best for you. Transform your business with our powerful Automation, Security, and Insight add-on modules.



Module Includes:

Feature	Benefit
<p>Asset Management Manage software inventory.</p>	<ul style="list-style-type: none"> Identify unauthorized software installed on users' or employees' computers Easily identify what is installed on each machine to boost security, avoid gaps, and take swift action if needed Pinpoint unauthorized flash/external drives connected to computers Confirm software versions are on the latest stable and secure build
<p>Proactive Alerts Set up, monitor, and take action on alerts to address potential performance and security issues before they occur.</p>	<ul style="list-style-type: none"> Take your IT support from reactive to proactive Receive critical system alerts in real-time and address potential issues before they occur Monitor computer health and take action on alerts to resolve concerns before they become problems Monitor any software/hardware changes including hard drive errors and stay ahead of risks Set up alerts for performance (CPU), maintenance (folder size, file size), and general supports (if a user installed software, missing hardware)
<p>Dashboard & Reporting Instantly view, track, monitor, and report on your entire IT infrastructure.</p>	<ul style="list-style-type: none"> Get a single-pane-of-glass view into remote access sessions Analyze account activity and customer reports to keep a pulse on your critical systems Easily audit security with activity and usage reports including who logged in when and from what IP address Report on the data that matters most such as inventory, CPU usage, and installed software Easily export reports for CPU usage, disc space, software changes, computers offline and more Produce customized reports at the hardware, software, and systems-level Drill-down data at specific endpoints – from software inventory to user profiles Instant access to configurable reports and data from anywhere to help stay secure and compliant
<p>Computer Audit & Inventory View and report on your IT infrastructure.</p>	<ul style="list-style-type: none"> Instantly view and report on your entire IT infrastructure to keep a pulse on the age of your critical systems Track and monitor your endpoint inventory with ease Review side-by-side comparisons of historical hardware, software, and system inventory data by date to track changes over time
<p>Executive Reports Generate a fixed-format report that provides a 30-day overview of key data.</p>	<ul style="list-style-type: none"> Provide customers and stakeholders with additional insight into the value of the services they provide Generate pie charges for the number of computers by Windows updates, antivirus, OS type, and disk space status Produce graphs for the number and total time of remote control sessions held per day Create pie charges for the number of alerts reported per day compared to the number acknowledged or the number of antivirus threats reported per day compared to the number of threats handled