

Data Sheet

Remote Monitoring & Management Feature Spotlight

Take control of your IT infrastructure



Flexible work is complex to support, but LogMeIn Resolve makes IT easy. Now your small or midsize business (SMB) can benefit from the same remote monitoring & management (RMM) capabilities normally used by managed service providers (MSPs) and enterprises.



Increase Productivity

Decrease downtime by working in the background to keep devices up and running, without disrupting your end users.



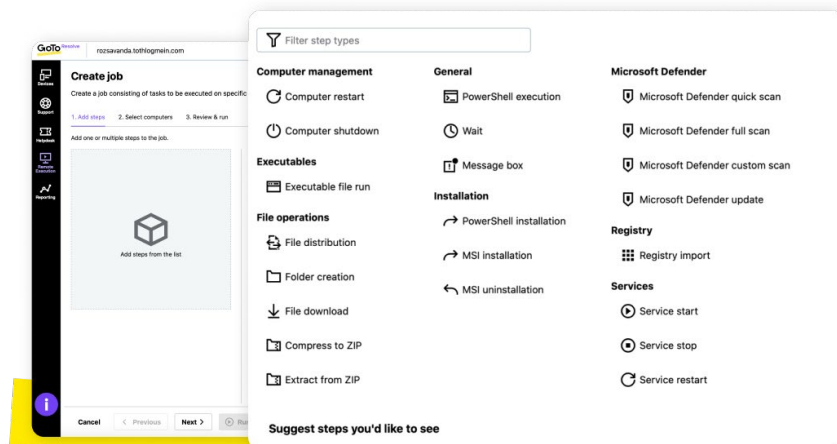
Maximize Security

Securing a highly fluid workforce can be tricky. Protect your devices with the industry's first-of-its-kind, zero trust access control.



Reduce Effort

Automate tasks that are often time-consuming and mundane for agents to execute manually.



Take care of many (often mundane) tasks all at once with Remote Execution.

Work smarter with RMM features that work harder.



Device Management

Automate manual tasks across thousands of computers.

- **Device Mass Deployment:** Deploy host software to multiple computers silently in the background using an MSI/PKG/APP installer.
- **Device Labeling:** Make searching and filtering easy by creating labels to tag devices.
- **Background File Manager:** View and securely transfer, move, and manage files from deployed hosts without needing to start a remote session.



Device Action

Take care of IT without the need to start a remote session.

- **Remote Execution:** Eliminate repetitive tasks by using pre-written PowerShell scripts to install/uninstall software, push files to multiple computers at once, run executable files, and update the registry.
- **Remote Terminal:** Access a fully functional command prompt on deployed hosts to take care of most, if not all, administration tasks. Complete multiple tasks simultaneously to save time.
- **Patch Management:** Identify, approve, and deploy patches to one or more devices to keep your software up-to-date and protected against threats without interrupting end users.



Device Insights

Know what's going on across your IT infrastructure.

- **Alerts:** Receive real-time, critical system alerts about computer health or software/hardware changes so you can proactively address potential issues before they become a problem.
- **Device Quick View:** Check on real-time system diagnostics like CPU, memory, network, processes, and more to see if there is an issue.



Device Security

Worry less with key security tasks on automatic.

- **Endpoint Protection:** Protect your endpoints from viruses, malware, ransomware, and sophisticated online threats.
- **Antivirus Management:** Easily monitor and manage antivirus software from a single dashboard with the ability to request status updates, view a list of threats, and initiate scans.
- **Zero Trust Access Control:** Protect your managed devices from malicious actors and provide supply chain vulnerability protection with required verification for each action.

RMM is just the beginning.

LogMeIn Resolve's all-in-one IT platform is all you need to support your flexible workforce.

[Get LogMeIn Resolve Free](#)