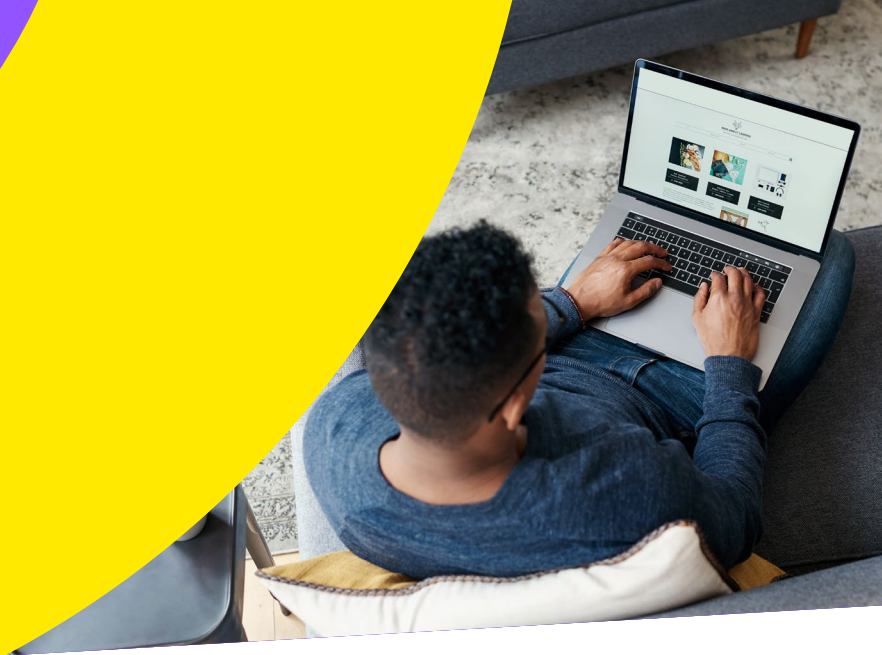


Data Sheet

Endpoint Protection Feature Spotlight

Secure your endpoints,
secure your business



Streamline endpoint security and mitigate the risk of cyber threats.

Powered by Bitdefender, LogMeIn Resolve Endpoint Protection software safeguards your IT infrastructure against malware, viruses, and other cyberattack vectors, all from a central dashboard. Now you can protect devices and users the easy way and gain benefits like:



Improved efficiency

No need to manage each endpoint individually. Save time and resources by managing all endpoints simultaneously.



Heightened Security

Bring enterprise-class security to your business and secure every employee endpoint, regardless of their location or network.



Simplified monitoring

Review the security status of all endpoints from a single dashboard, making it easier to detect and respond to potential threats quickly.



Streamlined Compliance

Simplify compliance efforts by easily configuring and enforcing security policies across all endpoints with LogMeIn Resolve's Endpoint Protection software.

Enterprise-class security made easy.

With LogMeIn Resolve Endpoint Protection, you'll gain six useful features that allow you to take your security posture to the next level.



Full scans

Perform a thorough scan of the entire system to detect and remove any malware or viruses in the system.



Security Definition Updates

Ensure all devices are up to date and protected against new malware or viruses. LogMeIn Resolve Endpoint Protection ensures your devices are safeguarded by automatically updating the software definition to defend against the latest threats.



Quick scans

Scan specific areas of the system quickly when time is of essence or when a full system scan is not feasible.



Turn on/off firewall

Turn on/off the firewall feature and protect against network-based attacks by preventing unauthorized access to the system.



Security Policies

Tailor security policies to fit organization-specific requirements and risk profiles, enabling effective threat mitigation and compliance enforcement.



Real-time protection

Continuously protect against malware threats with minimal impact on system performance.

Simplify and secure your IT infrastructure.

Get LogMeIn Resolve plus LogMeIn Resolve Endpoint Protection.

[Learn More](#)