



InsuranceSuite

Engage, innovate, and grow efficiently
with the most advanced insurance
platform in the world.



Industry Challenge

The P&C industry is facing an unprecedented time of accelerating change. To succeed in these conditions, you need a trusted technology platform that you can leverage to differentiate yourself from the competition.

Our Solution

Guidewire InsuranceSuite is the most advanced insurance platform in the world. It infuses business-critical core systems with the digital capabilities and analytical insights required for innovation and reliability.

OVERVIEW

Expect more from your core systems.

Technology shouldn't get in the way of your business strategy, but too often, it does. Updating and integrating your disparate systems can be time-consuming and frustrating, and the information that you need to analyze is often dated and spread across many locations. It shouldn't be that way. Your core systems should enable your business strategy while making it easier to become more efficient, to make smarter decisions, or to try something new.

That's why Guidewire built the most advanced insurance platform in the world: Guidewire InsuranceSuite. InsuranceSuite combines ClaimCenter, PolicyCenter, and BillingCenter—unifying and empowering end-to-end insurance processes, including digital experiences and embedded analytics. And subscribing to Guidewire Cloud means that you can leave the upgrades to us while being confident that you'll always have the latest technology. It's no wonder over 290 insurers trust InsuranceSuite to help them engage, innovate, and grow efficiently.

InsuranceSuite



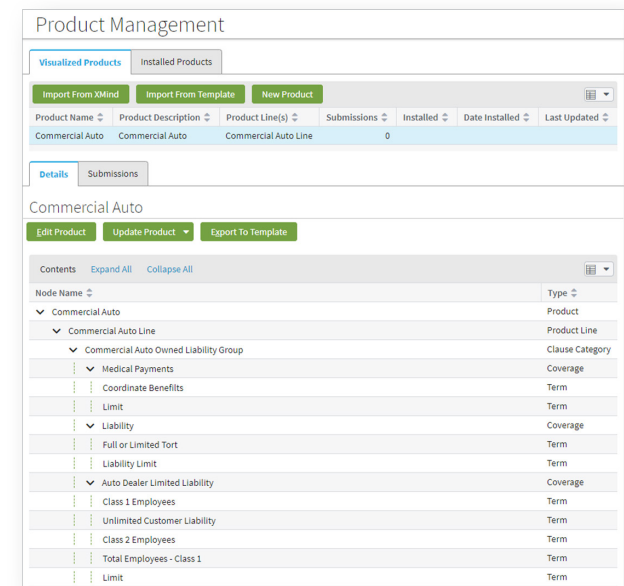
- Go fast.
- Think digital.
- Be smart.
- Unlock your IT potential.

Go fast.

Accelerate your business-critical initiatives—from process improvements to offering new products and entering new markets

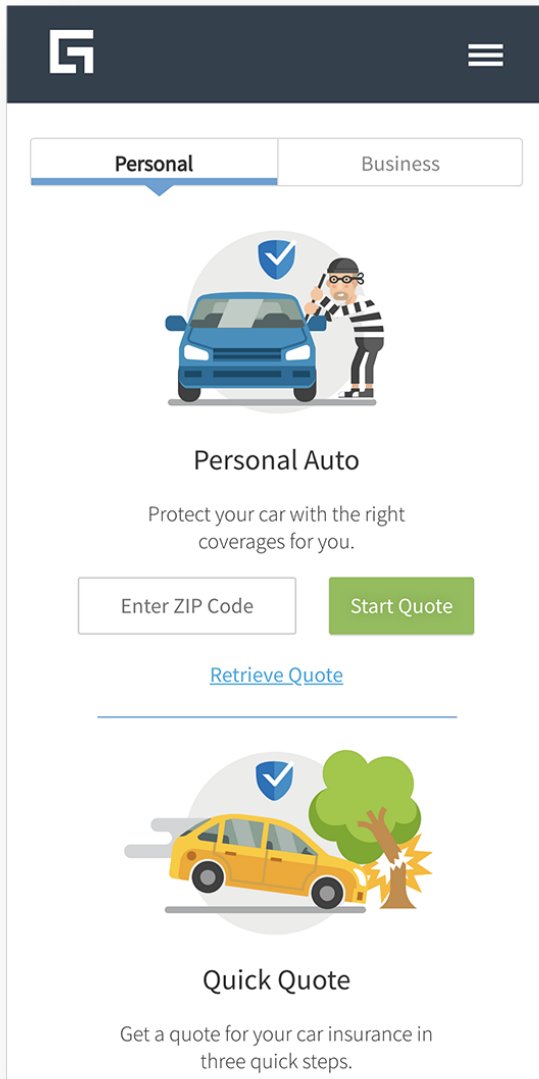
In order to better enable your ever-evolving business strategy, InsuranceSuite provides you with all of the tools and capabilities that you need to be agile, including cloud-native services like our rating and rules engines.

Creating a new insurance product in InsuranceSuite is a snap. Advanced Product Designer allows you to conceptualize the product visually, then automates the technical part of product creation. From there, Digital Autogeneration makes it simple to create a digital quote and buy experience for the new product. With these tools, you can go to market in weeks instead of months or even years.



"Guidewire gives us the platform to enable us to release change rapidly and innovate in terms of our product portfolio. But also—equally as important if not more important—is changing our culture to be a truly agile culture where people work together using an agile process to enable that change to be executed very rapidly and at low cost."

Jules Christmas
Group IT Director
Saga Services



The screenshot shows the Guidewire InsuranceSuite interface. At the top, there's a dark blue header with the Guidewire logo and a menu icon. Below the header, there are two tabs: 'Personal' (selected) and 'Business'. The main content area features an illustration of a blue car with a thief and a checkmark, representing a theft claim. Below this, the text 'Personal Auto' is displayed, followed by the description 'Protect your car with the right coverages for you.' There are two input fields: 'Enter ZIP Code' and a green 'Start Quote' button. Below these, there is a link 'Retrieve Quote'. A horizontal line separates this section from the 'Quick Quote' section below. The 'Quick Quote' section features an illustration of a yellow car with a tree and a checkmark, representing a collision claim. Below this, the text 'Quick Quote' is displayed, followed by the description 'Get a quote for your car insurance in three quick steps.'

Think digital.

Engage with your customers, agents, and service providers through their preferred channels

It's a digital world. With InsuranceSuite, your digital experiences are considered an essential part of the platform, not a separate topic. This means that you can leverage the insurance products and business processes from your core systems to engage with all of your stakeholders through their preferred channels across marketing, sales, service, and claims.

Experience Manager makes it easier for you to create new digital experiences and optimize them based on integrated analytics. And since there is no "one size fits all" customer journey, you can tailor and personalize it through branding, differentiated offerings, and more.

"We believe Guidewire sets a very high standard for automating and optimizing a bigger part of the shared digital experience between customer, broker, and insurance company."

Carol Jardine
Senior VP and
Chief Strategy Officer
Wawanesa Insurance

Be Smart.

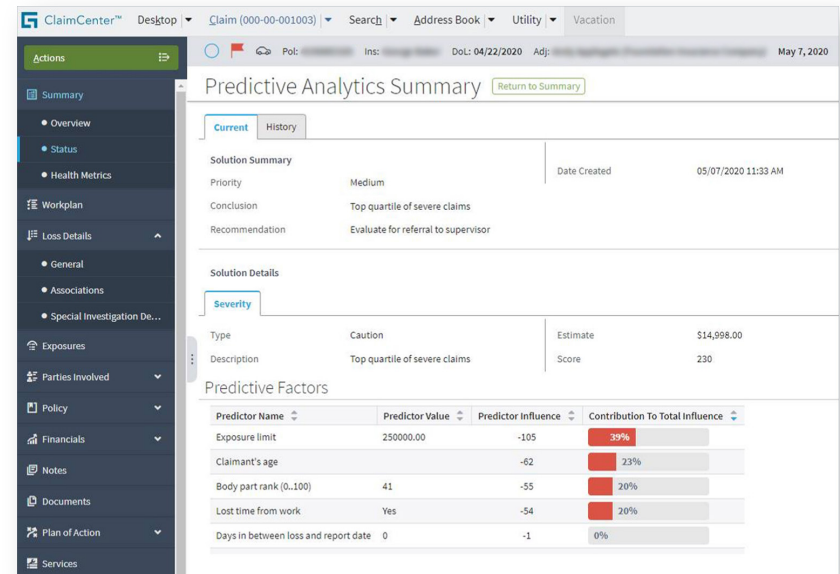
Make users brilliant in the moment with actionable insights embedded into your core processes.

Analytics shouldn't be an afterthought. That's why Guidewire Analytics are embedded within InsuranceSuite to provide actionable insights that lead to smarter decisions and operations.

Actionable analytics start with data. Your InsuranceSuite subscription includes the Guidewire Data Platform—a P&C insurance-specific data repository and factory that continuously collects data from internal and external sources, then distributes that data across the insurance lifecycle.

Your InsuranceSuite subscription also includes:

- **Guidewire Explore:** collects and curates InsuranceSuite data in near real-time to measure and monitor operational business performance.
- **Guidewire Compare:** provides comparable peer insurer benchmarks for ClaimCenter users to gain a competitive advantage.
- **Guidewire Predictive Analytics:** a P&C insurance-specific machine learning platform to optimize claims and improve underwriting profitability.
- **Cyence Risk Insights Starter Kit:** an on-demand risk-assessment engine for PolicyCenter users to leverage predictive external data to improve underwriting outcomes and seize new growth opportunities.





"We decided to adopt Guidewire Cloud as the enabler of our business and operations, to improve time to market, customer experience, digital capabilities, and excellent quality of services."

Lorenzo Chiofalo
Head of Innovation
Aviva in Italy

Unlock your IT potential.

Turn innovative ideas into results with a platform uniquely engineered for continuous improvement.

Guidewire Cloud is built to allow you to keep your unique differentiation while we make sure our cloud service is always up to date. We work with you on the timing of your updates. New features are initially toggled off so you can decide if and when you want to turn them on. Subscriptions include review of your code changes to ensure your performance, operations, and security.

Open and extensible APIs make it much easier to build and maintain integrations across your entire system so you can adapt rapidly to new opportunities and unforeseen changes.

Why Guidewire?

Proven trust.

Insurers of all sizes—including some of the largest and most complex deployments—count on Guidewire to deliver a reliable and secure cloud service.



Guidewire is an APN Advanced Technology Partner and has achieved AWS Financial Services Competency.



Guidewire consistently demonstrates compliance with our ISO 27001 certification, PCI DSS, SOC 1 and 2, and AWS Financial Services Competency.

40+

InsuranceSuite core systems are currently in production on Guidewire Cloud or are in the process of being deployed.

\$600M+

Investment in Research and Development since 2016, the highest in the P&C industry.

140+

Customers have subscribed to at least one application on Guidewire Cloud.



guidewire.com

Guidewire is the platform P&C insurers trust to engage, innovate, and grow efficiently. We combine digital, core, analytics, and machine learning to deliver our platform as a cloud service. More than 500 insurers, from new ventures to the largest and most complex in the world, run on Guidewire. For more information, contact us at info@guidewire.com.

© 2023 Guidewire Software, Inc. For more information about Guidewire trademarks, visit <http://guidewire.com/legal-notices>. Document published: 2023-02-24
BR-InsuranceSuite_EN_0223