

# + Flatiron Lunch & Learn



February 24th, 2023

1066 West Hastings Street

Vancouver, BC V6E 3X2

**HATCH**

A photograph of several high-visibility safety vests hanging on a rack at a construction site. The vests are orange and yellow with reflective green and orange stripes. A red hard hat is visible in the background. A dark grey rectangular box is overlaid in the center of the image, containing the text 'Safety Share' in white.

# Safety Share





# Employee-owned

partners who think like owners

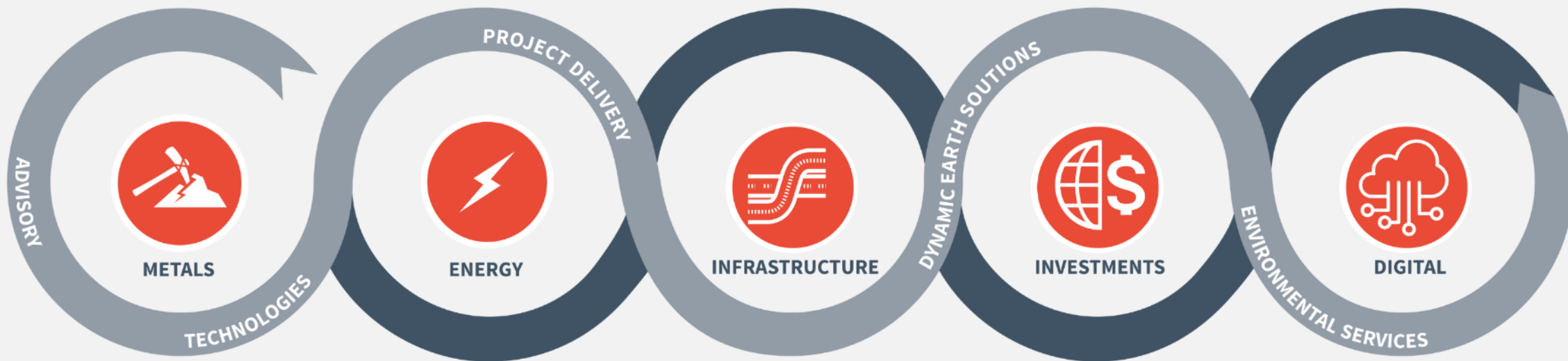
Projects in  
150 countries

6 decades  
of experience

US\$50 billion  
in projects

10,000 professionals  
worldwide

# Our Business





## **Technologies**

We work in partnership with you, helping to evaluate, prioritize, select, and implement the best solution for your needs, whether it is an existing product or one that we develop to satisfy your unique needs.



## **Environmental**

Focused on early exploration and concept studies to identify the operational commitments and potential effects on the environment while addressing Sustainable Development Goals.



## **Advisory**

Evidence-based advisory services with a unique blend of deep technical, social, environmental, and business expertise to help you get real results, faster and unleash the full potential of your assets and organization.



## **Digital**

From digitization to transformation, we help you integrate project delivery, transform operations and drive higher levels of productivity in your projects and assets to unlock long-term sustainable value.



## **Climate Change and Sustainability**

We take a scientific, evidence-based approach to design and build practical, safe, and innovative solutions to combat climate change.



# Key differentiation





# Vancouver Office

# Infrastructure

Building to meet the market challenges

Transportation



Urban Solutions



Water



Transit



Aviation



Highways & Bridges



Water Solutions



Ports & Marine



Rail



Tunnels



Rail Systems



Management & Delivery





# Current Projects with Local Authorities

## Metro Vancouver

- Annacis Water Supply Tunnel
- Annacis Outfall WWTP Tunnel

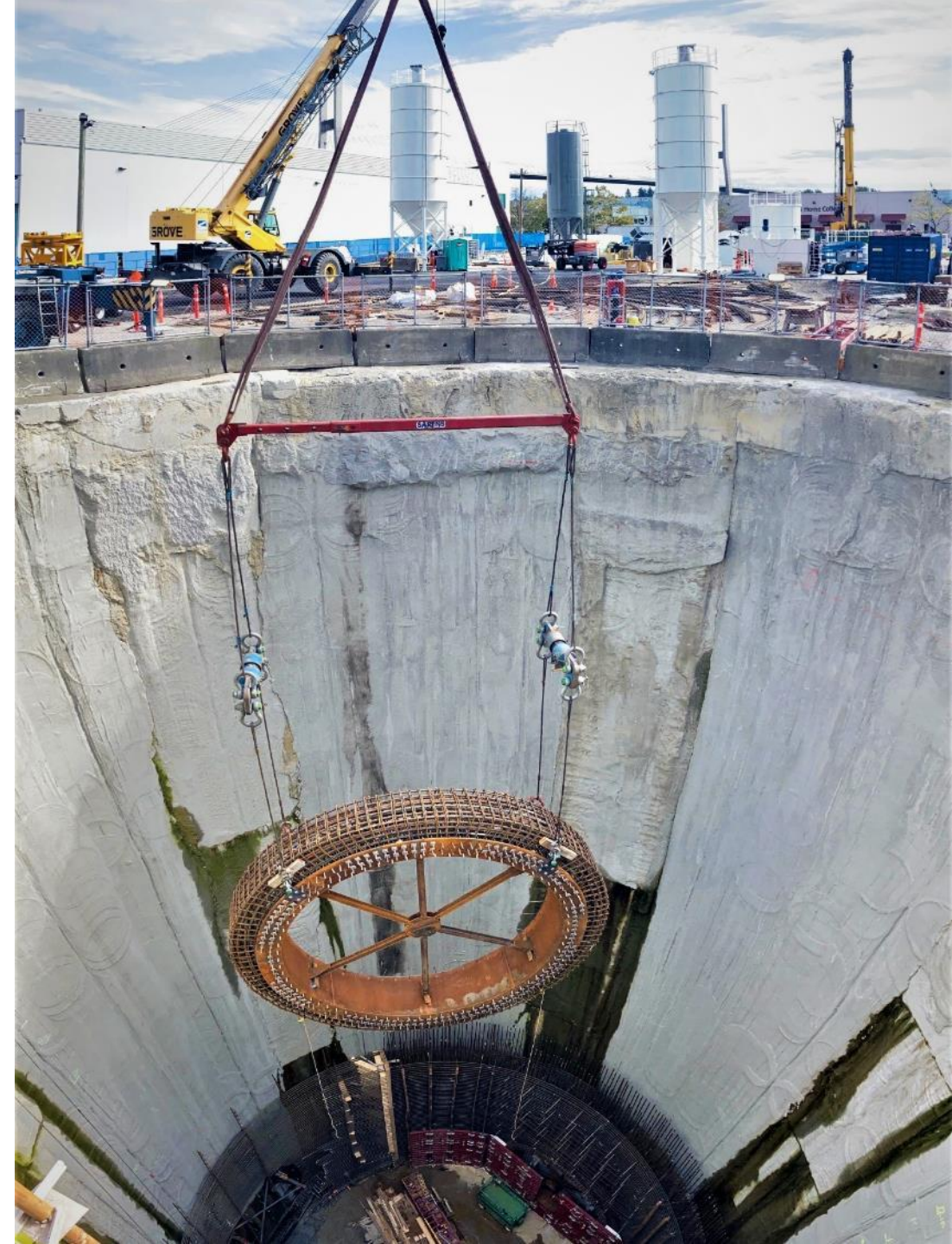
## TI Corp.

- Pattullo Bridge Replacement
- Surrey Langley SkyTrain

## Vancouver Fraser Port Authority

- Centerm Expansion Project / South Shore Access Project
- RBT2

## Service Provider to CN, CP and BCR





# Current Projects with Local Authorities

## BC Ministry of Transportation and Infrastructure

- Taylor Bridge Replacement Owners Engineer
- HWY1 work 264<sup>th</sup> to Whatcom Road Owners Engineer
- As and When Contract for Hydrotechnical Services





# Key local Projects



# Centerm Expansion Project

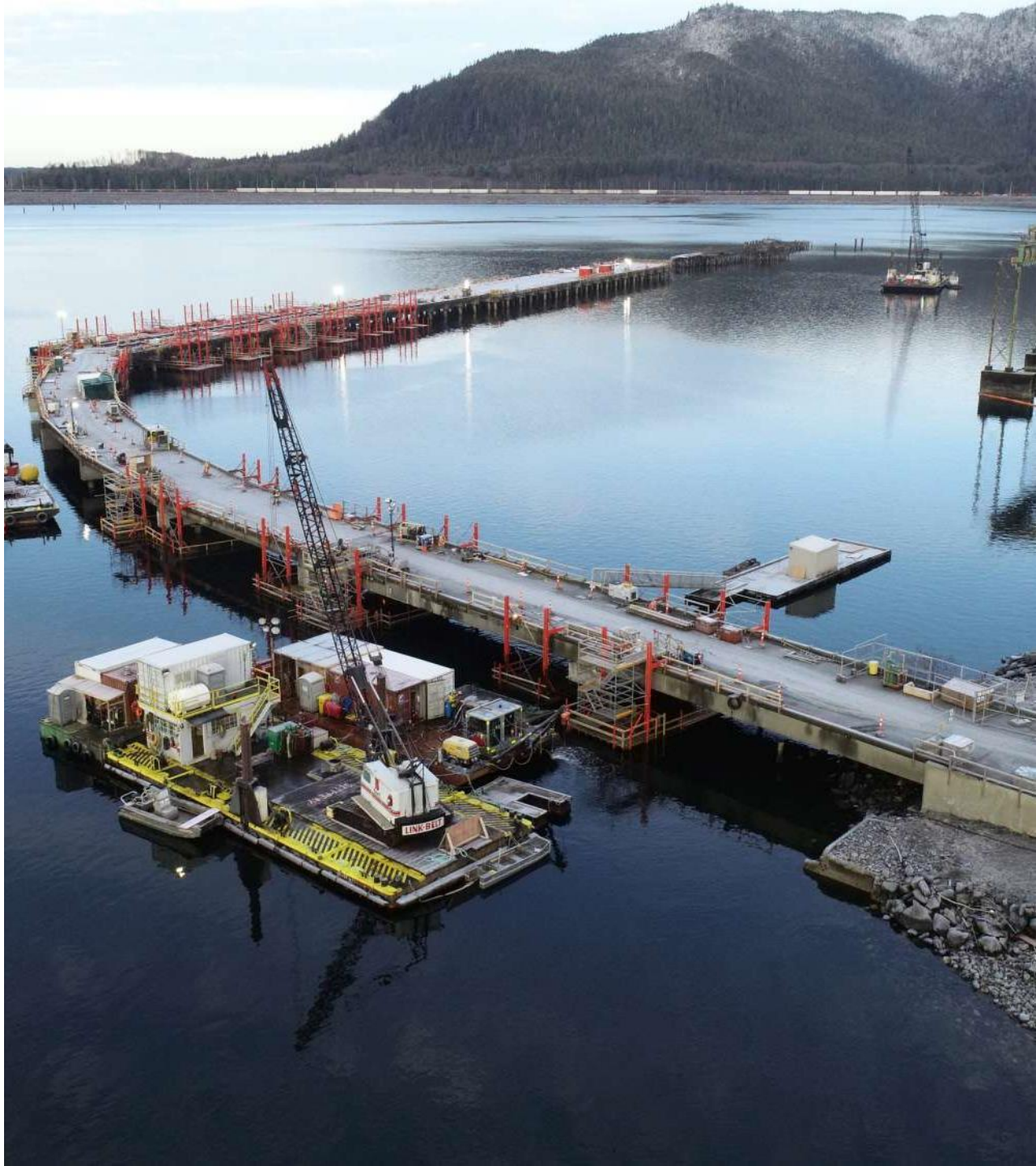
- Achieved Envision Platinum Award for Sustainability
- Dredge, dyke, densification, revetment and fill engineering for the Eastern and Western terminal expansion.
- Expanded the Intermodal Yard by adding a fifth rail track and rail track extensions to the west and east to improve operations and rail service.
- Logistics, engineering, automated system, and site redevelopment of the terminal entrance and exit, including the truck gate canopy design, signal, communication and electrical work.
- Demolition of the Ballantyne heritage building and conversion for the design of the new Container Operations Facility building.





# Pembina Prince Rupert Terminal

- Preliminary and detailed design for rehabilitation and retrofit the existing wharf and trestle marine structures.
- Accommodate berthing and loading of liquid petroleum gas LPG Carriers for export to overseas markets.
- Intent to steel jacket over the existing piles to avoid completely newly constructing a wharf and trestle.
- Intent to maximize re-use of existing components like the fender panel systems to keep the terminal functional but safe.
- Intent to meet a schedule driven to be operational as quickly as possible.



# Pattullo Bridge Replacement Project

- New 4-lane bridge will be designed with the capability of being widened to six lanes in the future.
- New bridge will be a crossing for all bridge users with modern, wider lanes, separated by a centre median barrier.
- Bridge includes dedicated walking and cycling lanes, separated from traffic by a barrier on both sides of the bridge.
- Life cycle, long-term operation, and maintenance consideration are being incorporated to optimize the design.
- Strategic regulatory approach to reduce future permitting requirements.
- Designed by implementing sustainable practices and approaches, including incorporating climate change design considerations.





# PMH1

- Prime detailed designer
- Bridge, roadway, pedestrian structures, drainage, utilities, geotechnical services, hydraulic, ITS and environmental permitting
- Cut and cover construction
- Fire life safety

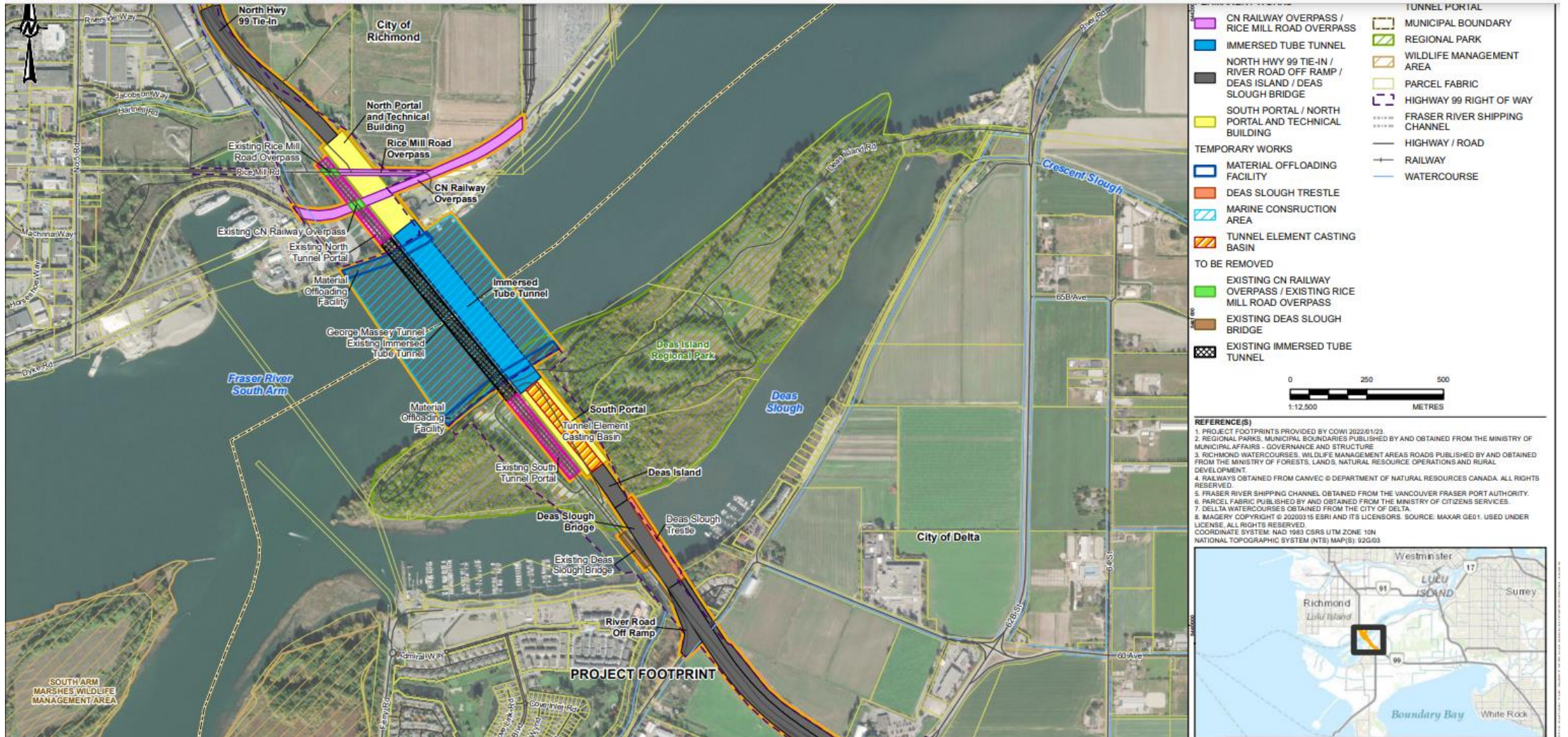




# Fraser River Crossing



# Scope of Work





# Key People Vancouver Practice Leads

Team	Local	Lead	Qualifications
Civil – Utilities and Drainage		Tom Greaves*	<ul style="list-style-type: none"> <li>• 32 years of experience</li> <li>• Highway 1 at 264th Street to Whatcom Road</li> <li>• Surrey to Langley SkyTrain</li> <li>• Pattullo Bridge Replacement Project</li> </ul>
Bridges and Highways	✓	Matthias Yu	<ul style="list-style-type: none"> <li>• 20+ years of experience</li> <li>• Pattullo Bridge Replacement Project</li> <li>• Rt. Hon Herb Grey Parkway</li> <li>• Centerm Expansion Project</li> </ul>
	✓	Loris Paoletich	<ul style="list-style-type: none"> <li>• 22+ years of experience</li> <li>• PTH100 and St. Mary's Road Interchange</li> <li>• West Calgary Ring Road DB2</li> </ul>
	✓	Steve Tarr	<ul style="list-style-type: none"> <li>• 35+ years of experience</li> <li>• George Massey Tunnel Replacement, DB Proposal</li> <li>• Gordie Howe International Bridge, DBOM Proposal</li> </ul>
Tunnels	✓	Derek Zoldy	<ul style="list-style-type: none"> <li>• 29 years of experience</li> <li>• Annacis Water Supply Tunnel</li> <li>• Annacis Main No.5 Conceptual Design for Tunnel</li> <li>• Port Mann Water Supply Tunnel</li> </ul>
Systems	✓	Peter Bohmert	<ul style="list-style-type: none"> <li>• 35 years of experience</li> <li>• TransLink Operations Control Centre</li> <li>• 4th Avenue Crossing Signal Design, Abbotsford</li> </ul>

# Key People Vancouver Practice Leads

Team	Local	Lead	Qualifications
Fire Life Safety, Tunnel Ventilation	✓	Mina Samimi	<ul style="list-style-type: none"> <li>• 14 years of experience</li> <li>• Réseau Express Métropolitain (REM)</li> <li>• Evergreen Line Extension Project</li> <li>• Expo Line TVS Rehabilitation Project</li> </ul>
	✓	John Dick	<ul style="list-style-type: none"> <li>• 4 years of experience</li> <li>• Coquitlam Main No.4 Tunnel</li> <li>• Annacis Water Supply Tunnel</li> <li>• Calgary Green Line</li> </ul>
Environmental	✓	Keith Bell	<ul style="list-style-type: none"> <li>• 15 years of experience</li> <li>• Pattullo Bridge Replacement Project</li> <li>• Metro Vancouver Lions Gate Wastewater Conveyance</li> <li>• Lehigh Hanson Tilbury Island EA</li> </ul>
Geotechnical	✓	Parham Ashayer	<ul style="list-style-type: none"> <li>• 20+ years of experience</li> <li>• OMC 3A - Evergreen Line Rapid Transit Project</li> <li>• Cascade Dam Spillway Upgrade</li> </ul>
Hydrotechnical	✓	Rajib Ahsan	<ul style="list-style-type: none"> <li>• 33+ years of experience</li> <li>• Three Sisters Dam Safety Review</li> <li>• Minton Lake Dam Rehabilitation</li> </ul>
Marine	✓	Sara Fumagalli-Hui	<ul style="list-style-type: none"> <li>• 29 years of experience</li> <li>• Centerm Expansion Project</li> <li>• Pembina Prince Rupert Terminal Project</li> </ul>

# Hatch Capabilities

Portals, Approaches

Highways

Deas Slough Bridge

CN and Road Overpasses

Marine Works

Tunnel support; tunnel systems; fire life safety, tunnel ventilation

Environmental

Geotechnical

Marine Works

Existing tunnel decommissioning



# Louis-Hippolyte-La Fontaine Tunnel

- Design-Build and Finance tunnel rehabilitation project
- Immersed tube tunnel built in the 1960s.
- Tunnel is approximately 1400 m long and 37 m wide.
- TVS/FLS





# Rt. Hon Herb Grey Parkway

- Prime detailed designer
- Bridge, roadway, pedestrian structures, drainage, utilities, geotechnical services, hydraulic, ITS and environmental permitting
- Cut and cover construction
- Fire life safety





# Kingston Third Crossing

- Prime designer
- Project management, roadways, drainage, approach spans, other structures, environmental management, traffic analysis, utilities coordination, public consultation, BIM and CAD, document control





# Why choose Hatch?

- On some of the largest regional projects (SL Skytrain, Pattullo)
- Previous experience with onshore works
- Local presence, 300 staff
- Multi-disciplinary company
- Excellent working relationship with First Nations / Community Engagement
- Innovative and sustainable design
- On winning team for initial bid design (GMT Bridge)
- Local leadership, global depth
- Depth of knowledge on challenging ground conditions
- Experienced Environmental Permitting team with recent successful lower Fraser River major permitting experience
- Digital Project Delivery with award winning Autodesk tools

+  
Thank you.

For more information,  
please visit [www.hatch.com](http://www.hatch.com)

