



LEGEND

- Town
- Chainage
- Road alignment

Farming field crop:

- Aquatic Biodiversity: Rivers  
Very High Sensitivity
- 32m River buffer
- Nfepa Wetland



CONSULTANTS:



MAP TITLE:

TR2\_21 Periodic Maintenance  
AQUATIC SENSITIVITY MAP

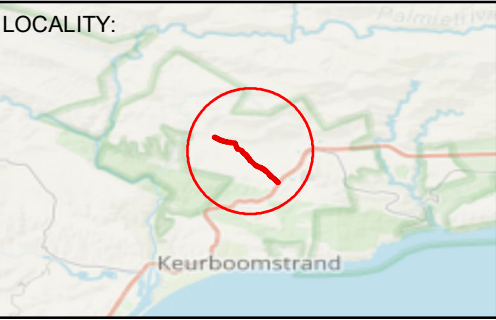
DATE COMPLETED:

MARCH 2020

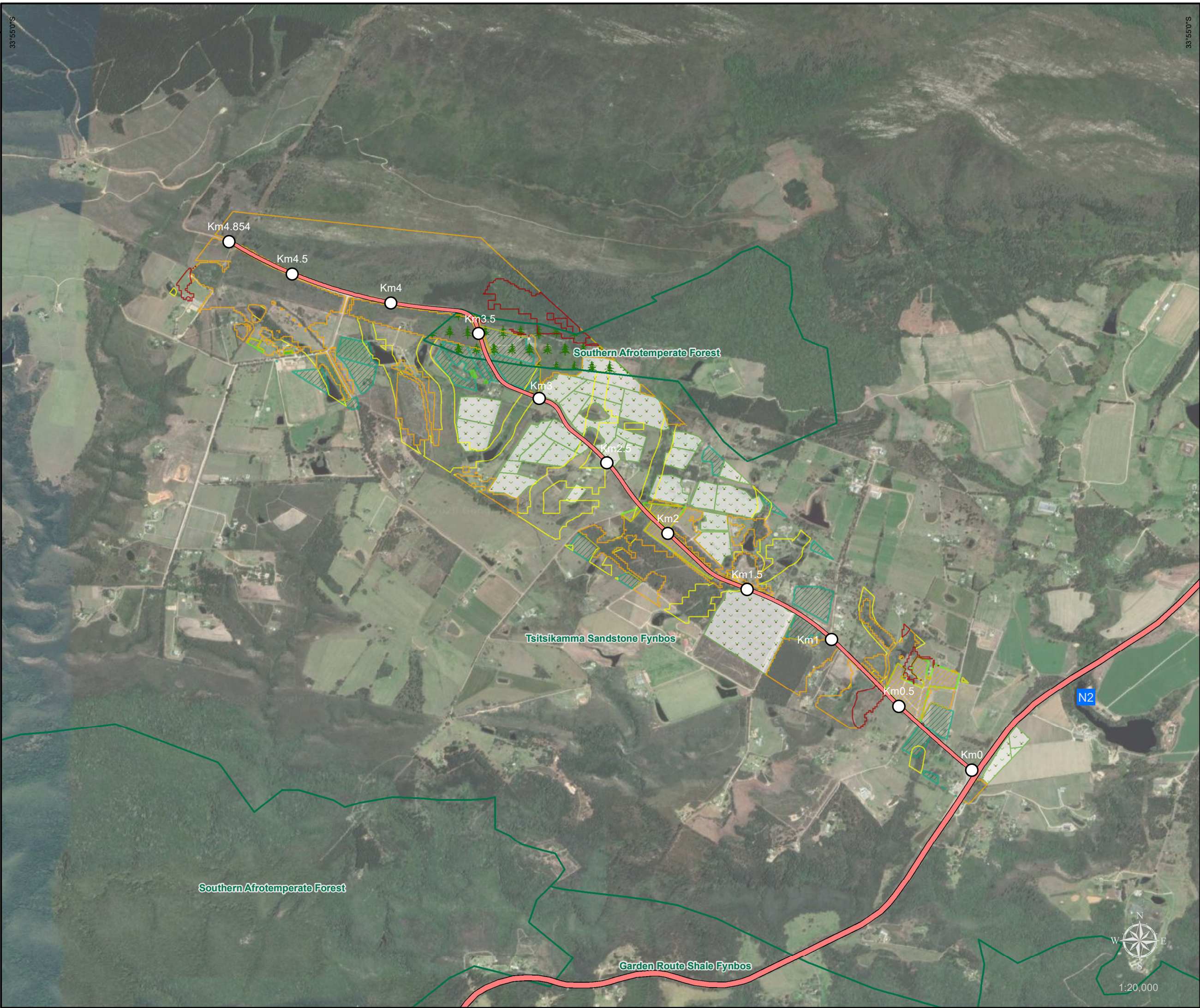
DISCLAIMER

THE INFORMATION PRESENTED ON THIS PAGE HAS BEEN COLLATED FROM INFORMATION COLLECTED FROM VARIOUS SOURCES, AS THE BEST INFORMATION, MADE AVAILABLE. NO WARRANTY, EXPRESSED OR IMPLIED, IS MADE REGARDING THE ACCURACY OR COMPLETENESS OF THIS INFORMATION.

LOCALITY:







**LEGEND**

- Town
- Chainage
- Road alignment
- Vegetation

Sensitivity features:

- Critical biodiversity area
- Ecological support area 1
- Ecological support area 2
- Indigenous forest

Farming field crop:

- Annual crop cultivation/planted pastures rotation
- Horticulture
- Shadenet
- Small Holdings
- Viticulture

CLIENT:



CONSULTANTS:



MAP TITLE:

**TR2\_21 Periodic Maintenance  
TERRESTRIAL SENSITIVITY MAP**

DATE COMPLETED:

**MARCH 2020**

**DISCLAIMER**

THE INFORMATION PRESENTED ON THIS PAGE HAS BEEN COLLATED FROM INFORMATION COLLECTED FROM VARIOUS SOURCES, AS THE BEST INFORMATION, MADE AVAILABLE. NO WARRANTY, EXPRESSED OR IMPLIED, IS MADE REGARDING THE ACCURACY OR COMPLETENESS OF THIS INFORMATION.

LOCALITY:

