

**LEGEND**

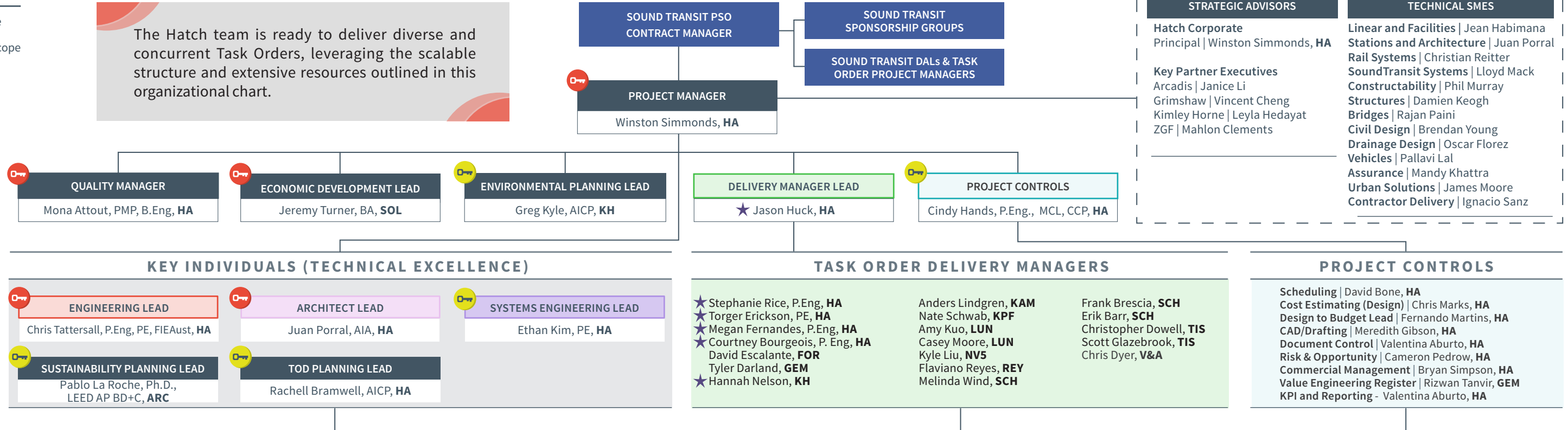
- Key Personnel Base Scope
- Key Personnel Auxiliary Scope
- DBE/SBE
- ★ Key Supporting Staff
- Firms that have worked with Hatch in the past

**PRIME FIRM**  
**HA** Hatch

- MAJOR FIRMS**
- **ARC** Arcadis
  - **GRI** Grimshaw
  - **KH** Kimley-Horn
  - **KPF** KPF Consulting
  - **ZGF** ZGF

- DBE/SBE/OTHER FIRMS**
- **AIA** Advanced Industrial Automation
  - **CHU** Chudgar Engineering Company
  - **CON** Concord Engineering
  - **DWE** Design West Engineering
  - **DKS** DKS
  - **DOS** Dossier Seattle LLC
  - **ENV** EnviroIssues
  - **EXO** Exodigo
  - **FAC** FACET
  - **FOR** Fortis
  - **GEM** Global Engineering Management Solutions
  - **GRE** Greenbusch
  - **HBB** HBB Landscape Architecture
  - **IDE** Integrated Design Engineers
  - **KAM** KAMP Engineering
  - **LAM** Lamoreaux Associates, Inc.
  - **LDC** Land Development Consultants, Inc.
  - **LOC** Lochner
  - **LUN** Lund Opsahl
  - **MPE** MPERA Group
  - **NV5** NV5
  - **PRE** Pacific Railway Enterprises, Inc.
  - **RAM** Ramos CS
  - **REY** Reyes Engineering, Inc.
  - **RIC** Richaven Architecture & Preservation
  - **RIO** RioTech
  - **ROM** RoMar7
  - **SCH** ScharrerAD
  - **S&W** Shannon & Wilson
  - **STA** Stanton
  - **TAL** Talson
  - **TVA** The Vida Agency
  - **TIS** Tiscareno
  - **TRE** TresWest
  - **SOL** The Solis Group
  - **UNI** Unico Engineering
  - **UMS** Utility Mapping Systems
  - **V&A** Virginkar & Associates, Inc.

The Hatch team is ready to deliver diverse and concurrent Task Orders, leveraging the scalable structure and extensive resources outlined in this organizational chart.



**KEY INDIVIDUALS (TECHNICAL EXCELLENCE)**

<b>ENGINEERING LEAD</b> Chris Tattersall, P.Eng, PE, FIEAust, HA	<b>ARCHITECT LEAD</b> Juan Porral, AIA, HA	<b>SYSTEMS ENGINEERING LEAD</b> Ethan Kim, PE, HA
<b>SUSTAINABILITY PLANNING LEAD</b> Pablo La Roche, Ph.D., LEED AP BD+C, ARC	<b>TOD PLANNING LEAD</b> Rachell Bramwell, AICP, HA	

**TASK ORDER DELIVERY MANAGERS**

<ul style="list-style-type: none"> <li>★ Stephanie Rice, P.Eng, HA</li> <li>★ Torger Erickson, PE, HA</li> <li>★ Megan Fernandes, P.Eng, HA</li> <li>★ Courtney Bourgeois, P. Eng, HA</li> <li>★ David Escalante, FOR</li> <li>★ Tyler Darland, GEM</li> <li>★ Hannah Nelson, KH</li> </ul>	<ul style="list-style-type: none"> <li>Anders Lindgren, KAM</li> <li>Nate Schwab, KPF</li> <li>Amy Kuo, LUN</li> <li>Casey Moore, LUN</li> <li>Kyle Liu, NV5</li> <li>Flaviano Reyes, REY</li> <li>Melinda Wind, SCH</li> </ul>	<ul style="list-style-type: none"> <li>Frank Brescia, SCH</li> <li>Erik Barr, SCH</li> <li>Christopher Dowell, TIS</li> <li>Scott Glazebrook, TIS</li> <li>Chris Dyer, V&amp;A</li> </ul>
---	---	---

**PROJECT CONTROLS**

Scheduling | David Bone, HA  
 Cost Estimating (Design) | Chris Marks, HA  
 Design to Budget Lead | Fernando Martins, HA  
 CAD/Drafting | Meredith Gibson, HA  
 Document Control | Valentina Aburto, HA  
 Risk & Opportunity | Cameron Pedrow, HA  
 Commercial Management | Bryan Simpson, HA  
 Value Engineering Register | Rizwan Tanvir, GEM  
 KPI and Reporting - Valentina Aburto, HA

**SENIOR CORE TECHNICAL STAFF**

<p><b>CIVIL AND STRUCTURAL SENIOR TECHNICAL LEADS</b></p> <ul style="list-style-type: none"> <li><b>Civil Engineering</b> ★ Zach Gray, PE, KPF ★ Mike, Colyn, KH</li> <li><b>Structures</b> ★ Matt Proitsis, HA</li> <li><b>Geotechnical Engineering</b> Evan Hsiao, HA</li> <li><b>Track Design</b> ★ Paul Wilson, HA Robert Austen, HA</li> <li><b>Utilities</b> Yuki Arata, EXO</li> <li><b>Drainage and Storm Water</b> Anthony Chown, HA</li> <li><b>Tunnels and Structures</b> ★ Colin Lawrence, HA</li> <li><b>Building Systems</b> Matthew Wolff, HA Muzaffar Ahtesham, HA</li> </ul>	<p><b>ARCHITECTURE AND SUSTAINABILITY SENIOR LEADS</b></p> <ul style="list-style-type: none"> <li><b>Architecture</b> ★ Tam Tran, HA ★ Mahlon Clements, ZGF ★ Guillaume Chan, ARC ★ Vincent Chang, GRI ★ Tushar Kishore, ARC ★ Christine Scharrer, SCH</li> <li><b>Sustainability Planning</b> ★ Thea Sarkissian, HA ★ Joey Hutchinson, ARC ★ Marty Brennan, ZGF</li> <li><b>TOD Planning</b> ★ Jeff Lehman, KPF</li> <li><b>Ground Plane</b> ★ Molly Spetalnick, AIA, ZGF</li> <li><b>Urban Design</b> ★ Rachel Bramwell, HA ★ Yunhee Jeong, AIA, LEED, GRI ★ Ben Deines, ZGF</li> <li><b>Landscape Architecture</b> Aaron Luoma, HBB Dean Koonts, HBB</li> </ul>	<p><b>SYSTEMS ENGINEERING SENIOR LEADS</b></p> <ul style="list-style-type: none"> <li><b>Systems</b> ★ Lloyd Mack, HA ★ Guy Chertock, HA ★ Noah Kinuta, HA David Marlow, KH</li> <li><b>Systems-BRT</b> ★ Erin King, ARC</li> </ul>
---	--	---

**ADDITIONAL RESOURCES (BASE AND AUXILIARY SCOPE)**

<p><b>Civil, Roadways, and Alignment</b></p> <p>Dan Reid, HA              Amir Amid, HA              Dominic Cheng, HA              Dorian Nesjan, HA              Gregory Krekic, HA              Greg Bajus, HA              Simon Vermette, HA              Derek Newbauer, KH              Chadi Chazbek, KH              Clarence McAllister Jr., FOR              Katrina Martel, NV5              Mitchell Alderman, PRE              Casey Wong, RAM              Juhi Patel, RAM              Jennifer Nishida, RAM              Bryan Hutchins, RAM              Kyle Robe, RIO              Richard Garrabrant, V&amp;A</p> <p><b>Structures and Guideways</b></p> <p>Joseph Ross, HA              Ben Collacott, HA              Jesse Lawson, HA              Dan Haslett, HA              Samantha Carr, HA              Colin Lampark, HA              Paul Tewari, HA</p>	<p>Ben Henderson, KH              Will Cyrier, KPF              Greg Hess, KPF              Dane Egusa, KPF              Samir Chudgar, CHU              Ignasius Seilie, HBB              Miroslav Doytchev, HBB              Ignasius Seilie, IDE              Madeline Philips, LUN              Alissa Capuano, LUN              Jason Hughes, NV5              Shivam Sharma, NV5              Yinbo Liu, V&amp;A</p> <p><b>Quality Management Team</b></p> <p>Nick Olds, HA              Jana Robertson, HA              John Hatter, HA              Ken Brzozowski, TAL              Patrick Tully, V&amp;A              Raymundo Contreras, V&amp;A</p> <p><b>Specifications Writer</b></p> <p>Micah Silke, HA              Ben Holland, V&amp;A</p> <p><b>Requirements Management</b></p> <p>Andrew Redmond, HA              Anoop Cheriyil, HA              Ro Moradi, HA</p>	<p>Vyn Loh, HA              Mariko Gardiner, HA              Paul Padegimas, UNI              Yohannes van der Merwe, UNI              Kendall Dobson, UNI</p> <p><b>Tunnels</b></p> <p>Frank Frandina, HA              Daniel Jezek, HA              Karl Schmitz, HA              Amir Golpaygan, HA              Reza Varkani, HA              Tomas Gregor, HA              Matthew Geary, HA</p> <p><b>Lighting Designer</b></p> <p>Gerardo Flores, FOR              Norm Russell, NV5              Harpreet Gurm, REY              James Chong, TRE</p> <p><b>Trackwork and Alignment</b></p> <p>Belden Kung, HA              Michael Ringrose, HA              Stephanie Vesely, HA              Rene Lipp, HA              Hannes Van der Walt, HA              Abishek Anandhan, HA              Colin Pabister, HA              Paul Pattison, KH</p>	<p><b>Traffic and MOT</b></p> <p>Eric Vaillancourt, HA              Ian Marlatt, HA              Vanessa Umutoni, HA              Louise Sapsford, HA              Whitney Chan, HA              Christian Budow, HA              Mark Bandy, KH              Brad Lincoln, KH              Jonette Kuhnau, KH</p> <p><b>Stormwater and Drainage</b></p> <p>Kirsten Gillis, HA              Shagha Attar, HA              Michael Rosales, HA              Deanna Martin, KH</p> <p><b>Electrical</b></p> <p>Guy Severn, HA              Ionel Lupea, HA              Robyn Korenic, HA              Jon Mathison, AIA              Maxwell Horne, CON              Clarence McAllister, FOR              Forrest Erickson, LAM              Flaviano Reyes, REY              Matt Deiss, RIO              James Chong, TRE              Ajay Nayyar, V&amp;A</p>	<p><b>Geotechnical</b></p> <p>Evan Hsiao, HA              Bill Kussmann, HA              Katherine Tuskes, HA              Lindsay Tita, HA              Yiorgos Zalachoris, LUN              Menzer Pehlivan, LUN              Angela Gelfer, NV5              Michael Chacon, NV5              Joe Clare, SW              Yinbo Liu, V&amp;A</p> <p><b>Mechanical/Piping</b></p> <p>Troy Alvarez, HA              Dinuk Athukorala, HA              David Wu, HA              Pete Syntax, KH              Mark Galle, DWE              Morrie Lieberman, FAC              Clarence McAllister, FOR              Kyle Kiseback, NV5              Natalie Chaidez, NV5              Pam Lentini, NV5              David Moore, TRE              Chris Dyer, V&amp;A              Quaylan Webb, V&amp;A</p> <p><b>Architect</b></p> <p>Danny Perez, HA              Jermey Aranoff, HA              Hassan Ibrahim, HA</p>	<p>Yan Paquin, HA              Jennifer Cramer, NV5              Paul Browne, NV5              Julie Petersen, SCH              Melinda Wind, SCH              Erik Barr, SCH              Christopher Dowell, TIS              Stacy Hansen, TIS              Vince Hoss, TIS</p> <p><b>Landscape Architect</b></p> <p>Jason Babowski, HA              Andrew, Keel, HA              Camila Campos, HA              Sule Alkan, HA              Randall Kopff, KH              Alan McWain, KH              Cendra Ramirez, GEM              Aaron Luoma, HBB              Stefan Golos, NV5              Jon Champlin, NV5              Mike Smyth, NV5              David Grant, ZGF</p> <p><b>Stations and Urban Design</b></p> <p>Kripa Gyawali, HA              Rachel Bramwell, HA              Yan Paquin, HA              Andrea Arnoldi, KH              Adam Dankberg, KH</p>	<p><b>Interior Design and Fit out</b></p> <p>Youn Lee, ARC              Mike Speck, ZGF              Omid Kiasari, ZGF</p> <p><b>Urban Planning</b></p> <p>Michael Sutherland, HA              Emma Petersen, HA              Victoria Webster, HA              Clay White, KH              Nolan Leinhart, ZGF              Mahlon Clements, ZGF</p> <p><b>Vertical Conveyance</b></p> <p>Youn Lee, ARC</p> <p><b>TOD</b></p> <p>Michael Sutherland, HA              Emma Petersen, HA              Victoria Webster, HA              Oliver Hartleben, ARC              Craig Lewis, ARC              Sam Zimbabwe, KH              Jerome Unterreiner, ZGF</p> <p><b>Environmental</b></p> <p>Peter Foote, HA              Skylar Davis, HA              Rachel Hasse, KH              Beth Bartz, KH</p>	<p><b>Utilities Design and Coordination</b></p> <p>Ilze Bone, HA              Sriparna Basu, HA              Jason Huck, HA              Mathieu Pariseau, HA              Leila Jafari, HA              Ben Averill, KH              Deanna Martin, KH              Yuki Arata, EXO              Bill Johns, EXO              Jason Childs, EXO              Clarence McAllister, FOR              Tim Hainley, NV5              Tiffany Maycumber, NV5              Brenda Hart, NV5              Clemente Ventura, NV5              Juhi Patel, RAM</p> <p><b>Permitting Specialist</b></p> <p>Domenic Sgro, HA              Brooke Ciunan, HA              Amanda Bahrij, KH              Marcy Kamerath, KH              Rachel Haase, KH              Kim Zuppiger, LDC              Jennifer Aylor, NV5              Ben Holland, V&amp;A</p>
---	--	---	---	--	--	--	--

## LEGEND

### PRIME FIRM

**HA** Hatch

### MAJOR FIRMS

- **ARC** Arcadis
- **GRI** Grimshaw
- **KH** Kimley-Horn
- **KPF** KPFF Consulting
- **ZGF** ZGF

### DBE/SBE/OTHER FIRMS

- ● **AIA** Advanced Industrial Automation
- ● **CHU** Chudgar Engineering Company
- ● **CON** Concord Engineering
- ● **DWE** Design West Engineering
- ● **DKS** DKS
- ● **DOS** Dossier Seattle LLC
- ● **ENV** Envirolssues
- ● **EXO** Exodigo
- ● **FAC** FACET
- ● **FOR** Fortis
- ● **GEM** Global Engineering Management Solutions
- ● **GRE** Greenbusch
- ● **HBB** HBB Landscape Architecture
- ● **IDE** Integrated Design Engineers
- ● **KAM** KAMP Engineering
- ● **LAM** Lamoreaux Associates, Inc.
- ● **LDC** Land Development Consultants, Inc.
- **LON** Lochner
- **LUN** Lund Opsahl
- ● **MPE** MPERA Group
- ● **NV5** NV5
- ● **PRE** Pacific Railway Enterprises, Inc.
- ● **RAM** Ramos CS
- ● **REY** Reyes Engineering, Inc.
- ● **RIC** Richaven Architecture & Preservation
- **RIO** RioTech
- ● **ROM** RoMar7
- ● **SCH** ScharrerAD
- ● **S&W** Shannon & Wilson
- **STA** Stanton
- **TAL** Talson
- **TVA** The Vida Agency
- **TIS** Tiscareno
- **TRE** TresWest
- **SOL** The Solis Group
- **UNI** Unico Engineering
- **UMS** Utility Mapping Systems
- **V&A** Virginkar & Associates, Inc

### Integration and Interface

Dan Plamenac, **HA**  
Matt Hyland, **HA**  
Russ Larson, **HA**

### Digital Delivery

Christopher Bird, **HA**  
Phil Ginakis, **HA**  
Chris Miller, **HA**  
Dan Gurgel, **HA**  
Chris Moore, **HA**  
Salah Badawi, **HA**  
Chris Stockdale, **HA**  
Scott Green, **HA**

### Lead Noise & Vibration Consultant

Mervyn Choy, **HA**  
Paul Correia, **HA**  
Adam Jenkins, **GRE**  
Ryan Hill, **NV5**

### Integration and Interface

Dan Plamenac, **HA**  
Matt Hyland, **HA**  
Russ Larson, **HA**  
Dale Brown, **HA**

### Digital Delivery

Christopher Bird, **HA**  
Phil Ginakis, **HA**  
Chris Miller, **HA**  
Dan Gurgel, **HA**  
Chris Moore, **HA**  
Salah Badawi, **HA**  
Chris Stockdale, **HA**  
Scott Green, **HA**

### Systems - Low Voltage Engineering

Umair Mirza, **ARC**  
Geron Shackelford, **ARC**

### ROW & Property

Julie Bastone, **HA**

### Quality Team

Jana Robertson, **HA**  
John Hatter, **HA**  
Ken Brzozowski, **TAL**  
Patrick Tully, **V&A**

### Administrative Support

Feliz Armijo, **KAM**  
Alicia Oatis, **NV5**  
Lori Munro, **NV5**  
Deanne, **NV5**  
Adina Brigham, **NV5**  
Heather Kwiecinski, **RIO**  
Jennifer Bryan, **RIO**  
Cheryl Connolly, **V&A**

### Document Control

Maria Cordoba, **HA**  
Jorge Valadez, **HA**  
Whitney Carnevale, **HA**  
Joshua Bastian, **HA**  
Darlene Pryor, **DOS**  
Karla Butler, **DOS**  
Karen Crnich, **DOS**  
Teresa Roberts, **DOS**  
Dana Wilk, **DOS**

Breyon Jackson, **GEM**  
Alicia Oatis, **NV5**  
Kandis Vallejos, **NV5**  
Sheila Reyes, **NV5**  
Cheryl Connolly, **V&A**

### Building Commissioning Agent

Clarence McAllister, **FOR**  
Richard Rozalski, **LAM**  
Forrest Erickson, **LAM**  
Scott Holloway, **LAM**  
Jason Newhuis, **NV5**

### Cost Estimator

Tony Iannuzzi, **HA**  
James Matthews, **HA**  
Jason Swagert, **GEM**  
Jay Turner, **GEM**  
P. George Philip, **GEM**  
Hiei Ha, **GEM**

Evelyn Berestka, **KAM**

Tim Kamper, **KAM**  
Richard Nunez, **KAM**  
Barbara Wiren, **KAM**  
Derek Newbauer, **KH**  
Matt Humphrey, **NV5**  
Joe Cartagena, **RAM**  
Frank Young, **RAM**  
Ed Jones, **STA**  
Justin McQueen, **STA**  
Marko Pala, **STA**  
Lonnie Rejda, **STA**  
Patrick Tully, **V&A**

### Contracts Administrator

Breyon Jackson, **GEM**  
Alexis Barnes, **NV5**  
Adam Trumbour, **NV5**  
Paul Kramer, **NV5**  
Patrick Tully, **V&A**

### Contract Delivery

Diego de Veyga, **HA**  
Pierre Turcotte, **HA**  
Peter Meyerhofer, **KH**

### GIS Specialist

Dan Reid, **HA**  
Sepideh Sepehr, **HA**  
Mouhamed Sylla, **HA**  
Julianna Villella, **HA**  
Itay Bar Lev, **EXO**  
Zack C, **GEM**  
Dane Jepsen, **LDC**  
Jackson Radenz, **NV5**

### BIM/CAD Specialist

Nick Alexander, **CON**  
Kelsey Ryan, **EXO**  
Jorge Lozoya, **FOR**  
Jeremy Beadles, **LAM**  
Andy Day, **NV5**  
Troy Mifsud, **NV5**  
Arshia Agah, **RAM**  
David "Brad" Fewell, **RIO**  
Corey Alvey, **RIO**  
Timothy Lee, **V&A**

### Due Diligence Studies

Craig Scott, **HA**  
Craig Peterson, **NV5**

## ADDITIONAL RESOURCES (BASE AND AUXILIARY SCOPE)

### Engineer, Transportation

Luke Li, **HA**  
Vineet Zacharia, **HA**  
Aamir Munir, **HA**  
Andrew Huang, **CON**  
Aaron King, **CON**  
Yuan Wen, **CONS**

### Surveyor

Murray Shantz, **HA**  
Travis Bradley, **KH**  
Erich Hiersche, **LDC**  
Riley Edwards, **LDC**  
Sebastian Garcia, **LDC**  
Vince Townsend, **LDC**  
Austin Snyder, **NV5**  
Chris Robinson, **NV5**  
Dan Wobbe, **NV5**  
Scott Bolduc, **NV5**  
Lawrence Signani, **NV5**

### Engineer, Systems/ Communications

Matt Wolff, **HA**  
Dan Rowe, **HA**  
Tony Scherpenisse, **HA**  
John Carson, **HA**  
Steve White, **ARC**  
Lee Ann Mangin, **ARC**  
John Mirabella, **FAC**  
Evelyn Berestka, **KAM**  
Tim Kamper, **KAM**  
Brent Lamoreaux, **LAM**  
Steve Lamoreaux, **LAM**  
Jennifer Seccombe, **PRE**  
Carrene Gilbert, **PRE**  
Bert Langer, **RAM**  
Ajay Nayyar, **V&A**

### Systems – Traction Power/OCS

Zac Basit, **HA**  
Anthony Adamowicz, **HA**  
Richard Rauceo, **HA**  
Hayat Abdu, **HA**  
Phanindra Puppala, **HA**  
Wayne Brown, **HA**  
Lamont Smith, **HA**  
Kevin Miller, **HA**  
Robert Kaminski, **HA**  
Alex Smith, **ARC**  
Sunish Mathew, **FAC**

### Systems – Rail Signals

Pete Heisey, **HA**  
Corey Matthews, **HA**  
Lars Gruber, **HA**  
Sarah Dahl, **HA**  
Max Nikiforov, **HA**

### Engineer, Hydraulic

Wenkai Cai, **NV5**

### Technical Advisor - Rail Systems

Clarence McAllister, **FOR**  
Christopher Elliot, **PRE**  
Bert Langer, **RAM**  
Brent Hillyard, **RIO**  
Jeffery Dugard, **RIO**  
Ben Holland, **V&A**

### Engineer, Transportation

Luke Li, **HA**  
Vineet Zacharia, **HA**  
Aamir Munir, **HA**  
Andrew Huang, **CON**  
Aaron King, **CON**  
Yuan Wen, **CONS**  
Syed Rahman, **CON**  
Meagan Powers, **CON**  
Jerry Liu, **DKS**  
Shams Mahallati, **GEM**  
Brent Lamoreaux, **LAM**  
Steve Lamoreaux, **LAM**  
Katrina Martel, **NV5**  
Chris Bonnano, **NV5**  
Craig Tom, **NV5**  
Andrew Gallegos, **NV5**  
Chris Dyer, **V&A**

### Transportation Planner

Wintana Miller, **DKS**  
Sam Zimbabwe, **KH**

### Vehicle Procurement

Don Murphy, **ARC**  
Cheikh Diop, **ARC**

### LRT Modelling

Jack Tattersall, **HA**

### Operations Analysis/Assessments

Erin King, **ARC**  
Don Murphy, **ARC**  
Randy Knapick, **ARC**

### Operations Control Center Design and Technology

Andrea Lendak, **ARC**  
Maryann Lovicsek, **ARC**  
Michael Wong, **ARC**

### Operations and Maintenance Facility Design

Nic Kressman, **ARC**  
Phil Klinkon, **ARC**  
Jay Kelly, **ARC**

### Transit Signal Priority/ Signal Operations

Jon Levy, **ARC**  
Gabe Murillo, **ARC**  
Brianna Garcia, **ARC**

### Energy Management Systems

Suhbash Japra, **ARC**  
Mahiyan Chowdhury, **ARC**

### Corrosion Protection

Miqdaad Fatakdwala, **HA**  
Sherif Abdelmeguid, **HA**  
Chuck Lawrence, **FAC**

### High Voltage Overhead Electrical Specialist

Clarence McAllister, **FOR**  
Jay Turner, **GEM**  
Ajay Nayyar, **V&A**

### Industrial Hygienist

Emily Kahler, **NV5**  
Kanani Young, **NV5**  
Ryan Hill, **NV5**

### Gas and Pipeline Specialist

John Lavoie, **GEM**  
Matthew Lee, **NV5**  
Hector Gonzalez, **NV5**  
Sergio Granados, **NV5**  
Jason Carty, **NV5**

### Entitlement Specialist

Jeff Lehman, **KPF**  
Jennifer Aylor, **NV5**

### Engagement

Eleanor Gill, **HA**

### Public Engagement and Outreach

Eleanor Gill, **HA**  
Lauren Stensland, **ENV**  
Cecelia Gunn, **ENV**  
Laura Treadway, **ENV**  
Nicandra Nava, **GEM**  
Diana Brown, **TVA**

### Facilitator

Bridger Wineman, **ENV**  
Ryan Orth, **ENV**  
Nicandra Nava, **GEM**  
Diana Brown, **TVA**  
Marcela Diaz, **TVA**

### Graphic Designer

Alicia Titsing, **HA**  
Maria Perez-Pria, **HA**  
Siobhan O'Brien, **HA**  
Maya Suzumura, **ENV**  
Kerry Hammond, **ENV**  
Anh Mai, **ENV**  
Tiffany Go, **KAM**  
Scot Williamson, **NV5**  
Candace Austin, **NV5**  
Ryan Zehm, **V&A**

### Safety & Security

Vyn Loh, **HA**  
Alice Fang, **HA**  
Mandy Khattra, **HA**  
Martin Miller, **HA**  
Nicolas Perron, **HA**  
Carl Deroche, **HA**

### Systems Assurance

Tim McGann, **HA**  
Jade Gan, **HA**  
Matt Hyland, **HA**

### Scheduler

Mesadak Agha, **GEM**  
David Kroboth, **GEM**  
Rich Feldman, **NV5**  
Marquez Hernandez, **RAM**  
Pamela Pala, **STA**

### Risk Management

Sumit Aggarwal, **HA**  
Moe Roghabadi, **HA**  
Matthew Schoenhardt, **HA**  
Steve Warhoe, **ARC**

### Waste Specialist

David Yao, **V&A**

### ADA Specialist

Donald Mebius, **HA**  
Brian Shamburger, **KH**  
David Niknafs, **NV5**

### Sustainability Specialist

Aaron Vaden-Youmans, **GRI**  
Will Watson, **KH**  
Jenna McDavid, **KH**  
Heidi Rous, **KH**  
Mark Peabody, **KH**  
Jeff Rex, **NV5**

### Fire Protection

Brandon Cash, **NV5**  
Nathan Muller, **NV5**  
John Campbell, **NV5**  
James Chong, **TRE**

### Bus Rapid Transit - Operations/ Service Planning

Don Murphy, **ARC**  
Randy Knapick, **ARC**  
Andrew Pease, **ARC**

### ITS

Lee Ann Mangin, **ARC**  
Steve White, **ARC**  
John Dong, **ARC**  
Youn Lee, **ARC**

### Bus Rapid Transit - Technology and Communications

Lee Ann Mangin, **ARC**  
Steve White, **ARC**  
John Dong, **ARC**

### Bus Rapid Transit - Infrastructure Design

Steve Schibuola, **ARC**  
Lydia LaPoint, **ARC**  
Matt Cox, **ARC**

### Zero Emissions Vehicle Charging Facilities and Technology

Doug Parker, **ARC**  
Jay Kelly, **ARC**  
Alex Smith, **ARC**  
Subhash Japra, **ARC**  
Tim Migliore, **ARC**

## Organizational Chart | Firm Resources Summary

Hatch has compiled a team that is able to provide resources for every Position Classification. The following table summarizes which team member firms will be supporting Sound Transit in these roles and is supplementary to the organizational chart we provided.

	Title	Grade	Prime Firm	Team Member Firm
1	ADA Specialist	1		Kimley-Horn, NV5
2	Administrative Support	1-5	Hatch	Facet, KAMP, NV5, Riotech, Virginkar & Associates
3	Architect	1-5	Hatch	Arcadis, Grimshaw, ZGF, NV5, Scharrer, Tiscareno
4	Architectural Designer	1-5	Hatch	Grimshaw, NV5, Scharrer, Tiscareno, Virginkar & Associates
5	BIM/CAD Specialist	1-5	Hatch	Concord, Design West Engineering, Facet, Fortis, Lamoreaux, NV5, Ramos, Riotech, Virginkar & Associates
6	Building Commissioning Agent	1	Hatch	Greenbusch, Lamoreaux, NV5
7	Contracts Administrator	1-2	Hatch	Arcadis, GEMS, NV5, Virginkar & Associates
8	Cost Estimator	1-5	Hatch	Arcadis, GEMS, KAMP, Lochner, NV5, Ramos, Stanton, Virginkar & Associates
9	Designer, Lighting	1-3		Facet, Fortis, Lochner, NV5, Reyes Eng, Tres West
10	Design Manager	1-5	Hatch	Arcadis, KPFF, Facet, Fortis, GEMS, KAMP, Lamoreaux, NV5, Ramos, Reyes Eng, Scharrer, Utility Mapping Services
11	Economic Development Lead	1		Arcadis, GEMS
12	Document Control	1-2	Hatch	Dossier, Facet, GEMS, NV5, Virginkar & Associates
13	Due Diligence Studies Lead	1		NV5, Shannon & Wilson
14	Engagement Lead	1		Arcadis, EnviroIssues, Kimley-Horn, Lochner, The Vida Agency
15	Engineer, Bridge/Long Span	1-5	Hatch	KPFF, Lochner, NV5, Virginkar & Associates
16	Engineer, Civil	1-5	Hatch	Kimley-Horn, KPFF, Fortis, Lochner, Pacific Railway Ent., Ramos, Riotech, Shannon & Wilson, Utility Mapping Services, Virginkar & Associates
17	Engineer, Electrical	1-5	Hatch	Arcadis, Kimley-Horn, Advanced Industrial Automation, Concord, Design West Engineering, Facet, Fortis, Lamoreaux, Lochner, NV5, Reyes Eng, Riotech, Tres West, Virginkar & Associates
18	Engineer, Fire Protection	1-5	Hatch	Design West Engineering, NV5, Tres West
19	Engineer, Geotechnical	1-5	Hatch	MPERA, NV5, Shannon & Wilson, Virginkar & Associates
20	Engineer, Hydraulic	1-5	Hatch	NV5, Virginkar & Associates
21	Engineer, Mechanical	1-5	Hatch	Arcadis, Design West Engineering, Fortis, Greenbusch, NV5, Tres West, Virginkar & Associates
22	Engineer, Plumbing	1-5	Hatch	Arcadis, Design West Engineering, Fortis, Greenbusch, NV5, Tres West, Virginkar & Associates
23	Engineer, Right of Way	1-5		NV5, Virginkar & Associates
24	Engineer, Structural	1-5	Hatch	Arcadis, Kimley-Horn, KPFF, Integrated Design Engineers, Lund Opsahl, NV5, Virginkar & Associates
25	Engineer, Systems/Communications	1-5	Hatch	Concord, Design West, Fortis, Greenbusch, KAMP, Lamoreaux, Lochner, NV5, Pacific Railway Ent, Ramos, Virginkar & Associates
26	Engineer, Transportation	1-5	Hatch	Kimley-Horn, Concord, DKS, GEMS, KPFF, Lamoreaux, Lochner, NV5, Virginkar & Associates
27	Entitlement Specialist	1-5		KPFF, NV5
28	Facilitator	1-5		EnviroIssues, GEMS, The Vida Agency
29	Gas and Pipeline Specialist	1		GEMS, NV5, Virginkar & Associates
30	GIS Specialist	1-5	Hatch	Concord, GEMS, Land Development Consultants, NV5, Utility Mapping Services
31	Graphic Designer	1-5	Hatch	EnviroIssues, KAMP, NV5, Virginkar & Associates
32	High Voltage Overhead Electrical Specialist	1		Fortis, GEMS, Virginkar & Associates
33	Industrial Hygienist	1-3		NV5
34	Intern	1	Hatch	(All key partners)

36	Landscape Architect	1-5	Hatch	Arcadis, Kimley-Horn, GEMS, HBB Landscape Architecture, NV5
37	Lead Noise & Vibration Consultant	1-5	Hatch	Greenbusch, NV5
39	Permitting Specialist	1-5		Land Development Consultants, NV5, Shannon & Wilson, Virginkar & Associates
40	Planner	1-5	Hatch	Kimley-Horn, Concord, Lochner
41	Principal	1	Hatch	(All key partners)
42	Project Controls Lead	1	Hatch	Arcadis, Facet, GEMS, KAMP, Lochner, Ramos, Virginkar & Associates
43	Project Manager	1-5	Hatch	Arcadis, Kimley-Horn, Exodigo, Facet, Fortis, GEMS, KAMP, KPFF, Lamoreaux, Lochner, Lund Opsahl, NV5, Reyes Eng., Scharrer, Tiscareno, Utility Mapping Services, Virginkar & Associates
44	Property Acquisition Specialist	1		NV5, Virginkar & Associates
45	Public Outreach Specialist	1-3		EnviroIssues, GEMS
46	QA/QC Manager	1	Hatch	Facet, Talson, Virginkar & Associates
47	Quality Manager	1	Hatch	Facet, Lamoreaux, Talson, Virginkar & Associates
48	Research Analyst	1-5	Hatch	
49	Scheduler	1-5	Hatch	Concord, GEMS, Lochner, NV5, Ramos, Stanton
50	Specifications Writer	1-2	Hatch	Facet, Lamoreaux, Virginkar & Associates
51	Subject Matter Expert	1-2	Hatch	Concord, Exodigo, Lamoreaux, NV5, Ramos, Shannon & Wilson, Unico, Virginkar & Associates
52	Junior Surveyor	1-3		Land Development Consultants, Utility Mapping Services
52	Surveyor	1-5		Kimley-Horn, Land Development Consultants, NV5, Utility Mapping Services
53	Sustainability Specialist	1-5	Hatch	Grimshaw, ZGF, Concord, NV5
54	Technical Advisor - Rail Systems	1	Hatch	Kimley-Horn, Facet, Fortis, Lochner, Pacific Railway Ent, Ramos, Riotech, Virginkar & Associates
55	Technical Analyst (e.g. Energy analyst)	1	Hatch	
56	Technical Editor	1	Hatch	Kimley-Horn
57	Technical Specialist	1	Hatch	Virginkar & Associates
58	Technician	1-2	Hatch	Utility Mapping Services
59	Technician, Right of Way	1-3		NV5, Virginkar & Associates
60	Transportation / Regulatory Analyst	1-5		Kimley-Horn, KPFF, Concord, DKS, GEMS, Lamoreaux, Lochner, NV5, Virginkar & Associates
61	Transportation Planner	1-5	Hatch	Arcadis, Kimley-Horn, Concord, DKS, Lochner
62	Utility Coordinator	1	Hatch	Design West Engineering, Fortis, Lochner, NV5, Ramos, Utility Mapping Services
63	Value Engineering Specialist	1	Hatch	GEMS
64	Waste Specialist	1-2	Hatch	Virginkar & Associates