

IRON MOUNTAIN IN ONE MINUTE

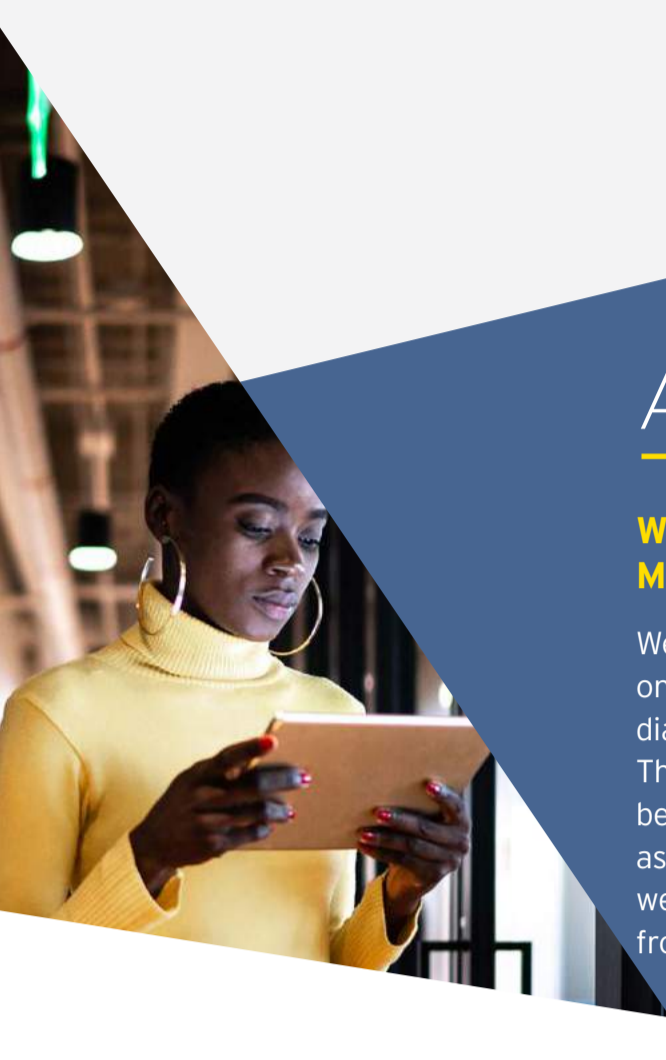
OIL AND GAS EDITION



TO BE YOUR MOST TRUSTED PARTNER

As a service provider for 70 years, we've watched the oil and gas industry evolve information systems from openreel seismic tapes to GIS shapefile maps to digitized P&IDs. All along the way we have evolved with you and now we're solving a broader range of problems and protecting a broader range of assets.

OUR PURPOSE



APPROACH

WHAT MATTERS MOST TO YOU, MATTERS MOST TO US

We help you connect cross-discipline workflows that depend on a wide variety of data – such as geologic maps, engineering diagrams, maintenance procedures and regulatory standards. Then we enable intelligent business processes that help you better understand the cost structures, profitability and ROI associated with producing assets and facility operations. And we give you the ability to claim green electricity consumption from our 100% renewable energy powered data centers.



IMPACT

WE PARTNER WITH MORE THAN 225,000 CUSTOMERS WORLDWIDE

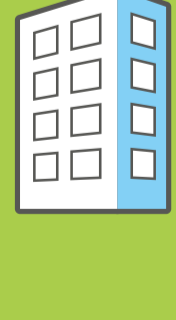
To protect, govern and maximize the value of our customers physical and digital assets, we provide a close collaborative partnership. Our history of trust, global network of facilities and integrated set of information management solutions make us your key to unlocking value in today's hybrid world. **HOVER OVER LOCATION PINS ON THE MAP BELOW TO FIND OUT MORE.**



OUR EVOLUTION



We're on a journey to incorporate environmental and social responsibility into everything we do to create more value for customers and everyone else who counts on us.



ISO 14001
CERTIFICATION
IN ENVIRONMENTAL
MANAGEMENT
ACHIEVED BY
ALL DATA CENTERS



81%
OF GLOBAL ELECTRICITY
FOOTPRINT COMES
FROM RENEWABLE
SOURCES



485,523 TONS
OF PAPER AND
CARDBOARD
RECYCLED



9% INCREASE
YEAR-OVER-YEAR IN
DIVERSE SUPPLIER AND
SMALL BUSINESS SPEND,
EXCEEDING \$211 MILLION+



61%
REDUCTION IN OUR
ABSOLUTE EMISSIONS
FROM A 2016 BASELINE



100% SCORE
FROM THE HUMAN RIGHTS
CAMPAIGN FOUNDATION'S
ANNUAL SCORECARD
ON LGBTQ WORKPLACE
EQUALITY