

# London

Data Center (LON-3)



Our London data center LON-3 is located at the heart of the densely interconnected Slough data center corridor to the west of the M25. The three-storey highly secure facility, scheduled for phased opening through 2026, contains six CPU and GPU-ready data halls offering a total critical IT capacity of 25 MW. As well as providing a wide range of on-site network services, the data center is connected to the LINX exchange, with dark fiber access to hundreds of other networks, clouds and service providers.

“ IRON MOUNTAIN’s physical site security, quality of service, customer support, and heritage in managing confidential data, allows NEC® to position our sap hosting solution as a new level of cloud service for sap® public sector clients.”

NEC

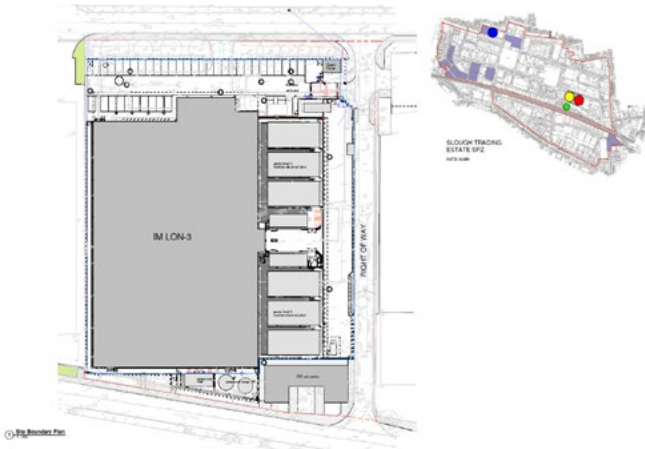
## Why choose LON-3?

- > **Room to scale**  
25 MW of AI-ready infrastructure RFS in 2026
- > **Connectivity-rich**  
Huge selection of carriers and other cloud on-ramps in-house and via the Slough data hub
- > **Compliance**  
The industry’s most comprehensive compliance program.

# London Data Center (LON-3)



Whether you are a hyperscale cloud provider, an enterprise, or a government agency looking for a large deployment, LON-3 can provide the space, security, standards and power configurations you need.



## Quick Reference Guide for LON-3

### Campus

- > LON-1, LON-2, LON-3
- > Slough Trading Estate
- > Berkshire
- > 2.5km west of Slough centre
- > 12 km from Heathrow Airport
- > Powered by 100% renewables

### Data Center

- > 2.5-acre site
- > 5,200 m<sup>2</sup>/25 MW
- > BREEAM green build
- > 3 storeys/6 data halls
- > RFS Q1-Q4 2026
- > AI/hyperscale cloud ready

### Interconnection

- > Carrier-neutral
- > Cloud-neutral
- > 15 on-site carriers
- > DF access to 100+ NSPs, clouds and IT service providers
- > On-prem peering: LINX
- > Diverse fiber points of entry

### Compliance

- > ISO 9001
- > ISO 14001
- > ISO 22301
- > ISO 27001
- > ISO 50001
- > ISO 14064
- > SOC 1, SOC 2, PCI-DSS

## Protect, connect, and activate your data

### Protect

- > Cutting-edge cloud-agnostic data centers built on 70 years of trusted security
- > 99.999% uptime and the widest range of third party accreditations in the industry,
- > 100% of customer power matched with renewables with a clear pathway to local hour-by-hour 24/7 Carbon Free Energy
- > BREEAM green building certification for all new builds
- > Green Power Pass carbon credit-sharing program to simplify ESG reporting

### Connect

- > Interconnected global footprint covering three continents and 21 markets
- > Low-to-no latency access on major backbones with in-house access to every leading cloud
- > Every tier 1 global and regional carrier & 100+ local carriers/NSPs
- > 20+ SDNs/cloud on-ramps & 14 Internet Exchanges
- > 1300+ customers & 16,000 cross connects

### Activate

- > 5 million gross sqft and 500 MW of operational space with a power and land bank of 1.3 GW
- > Investment in place to double total potential capacity to 2.6 GW by 2029
- > CPU and GPU-ready power and cooling design
- > Outstanding customer satisfaction NPS (Net Promoter Score) of +54.2
- > Full service portfolio covering pure AI/ML, flexible hybrid AI, smart hands, migrations and interconnection.

833.IRM.COLO | [ironmountain.com/data-centers](https://ironmountain.com/data-centers)

