



# One Team, One Health Update

September 2, 2025



# Our goal today: Stakeholder engagement

## *Preliminary engagement approach:*

### **Who: Engage with academic governance**

Meet with the Steering Committee to co-create a roadmap for engaging stakeholders

### **How: Use collaborative design process**

Partner with a third-party facilitator to gather inclusive feedback through:

- **Interactive Survey:** Short, video-based surveys to share information and gather targeted, equitable feedback
- **Focus groups:** Build on prior insights through targeted discussions to refine vision and define success

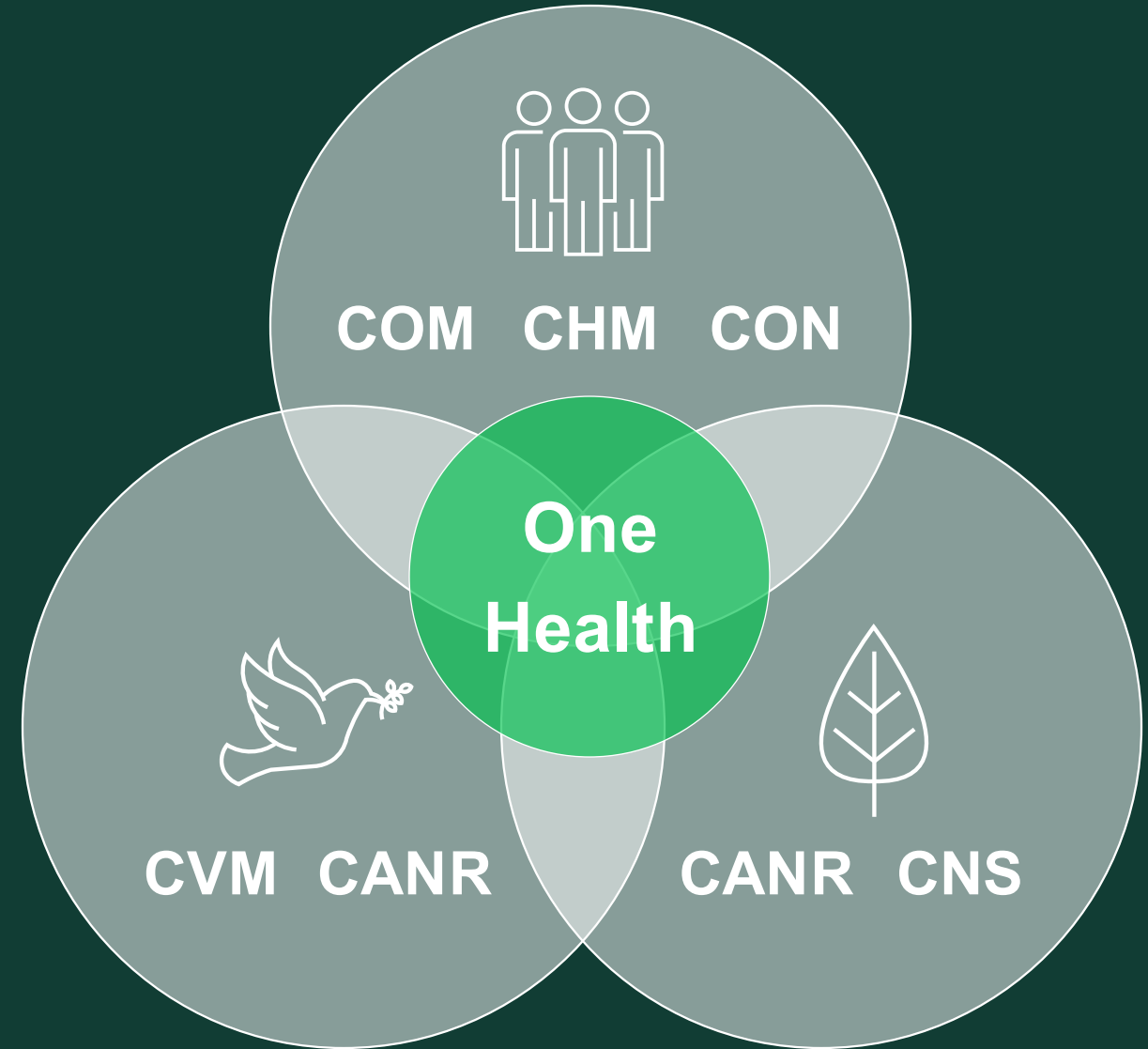
## *For discussion:*

- What **committees** need engagement? What other **groups and perspectives** should be included?
- What are the **most effective ways to engage** across stakeholders?
- How do we seize this **founding moment** to define the future of health at MSU?

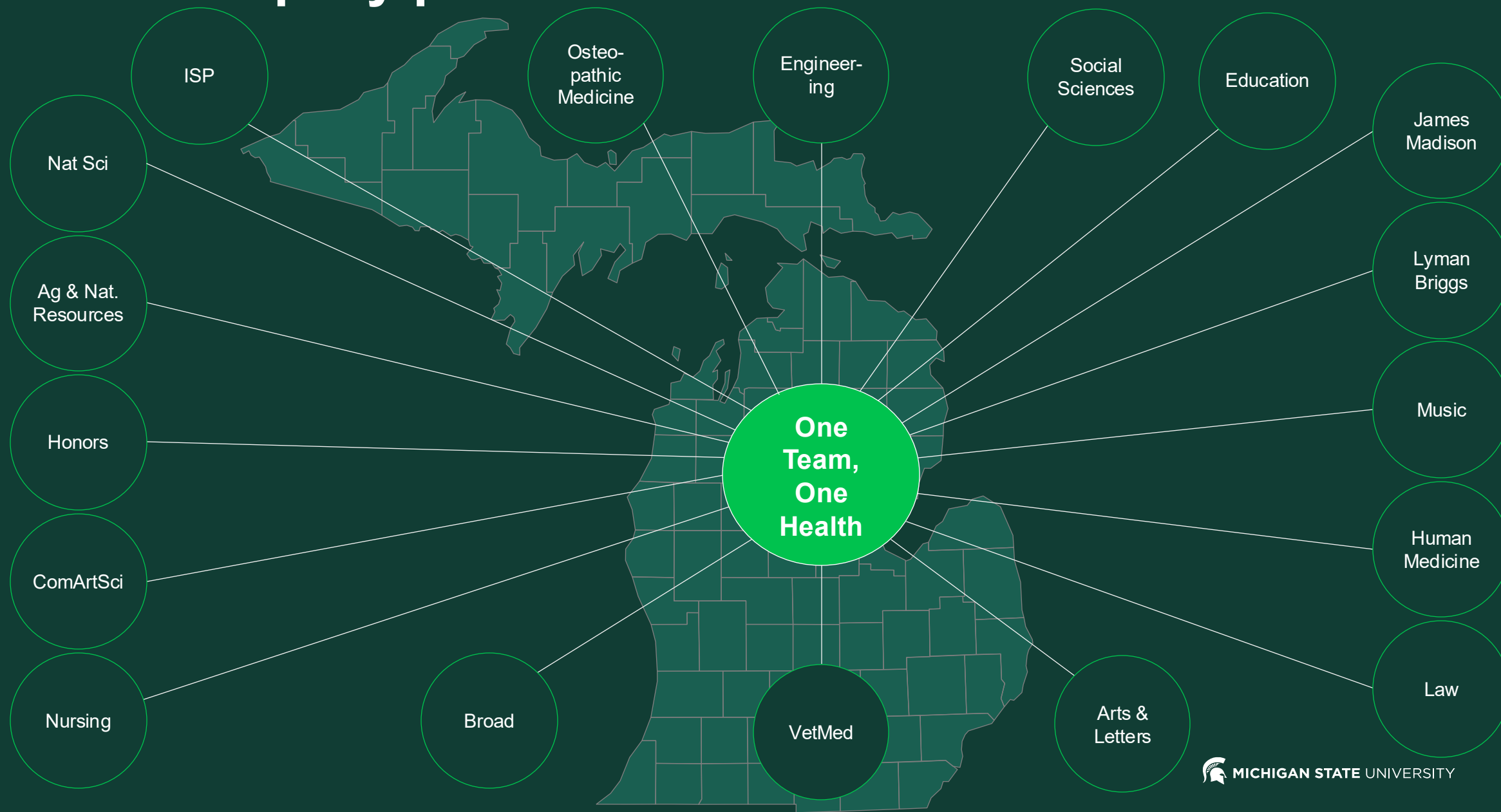
# One Team, One Health

*University-wide platform connecting human, animal, and environmental health*

- Grounded in our **land grant mission** to deliver real-world impact
- Harnesses our R1 **research excellence**
- Enhances **cross-college collaboration** that embodies One Team
- Focuses on **sustainable, integrated initiatives**
- Positions **MSU as a national leader** in advancing health solutions



# MSU: Uniquely poised to serve as a leader in One Health





# Why One Team, One Health

## Students

- **Broader integrated undergraduate curriculum** to introduce students to careers in health
- **Expanded clinical and community-based training opportunities** through unified networks
- **Stronger preparation** for team-based, holistic, and population-focused care



## Faculty

- **Larger, interdisciplinary teams** enable innovative research, education, and service
- **More collaboration and access** to shared resources, facilities, and support
- **Enhanced recruitment, retention, and professional development** through a stronger institutional brand

## Partners

- **Streamlined ‘front door’** with a single point of access for One Health research
- **Greater pipeline of versatile, team-ready graduates** across medicine, public health, and health professions
- **Joint initiatives** in workforce development, care delivery, and community health improvement

## Global Impact

- **Size and impact** will be well recognized; MSU has one of the largest medical programs in the country – but this is not well known
- **Research footprint** in health is enormous, and One Health brings this connectivity together, linking our past and current discoveries to our impact upon the world

## Michiganders

- **Expanded capacity to serve** underserved areas and address health disparities
- **Holistic, interdisciplinary approaches** to improve population health outcomes
- **Stronger statewide leadership** in public health, education, and health equity initiatives

# One Team, One Health: How we got here



**One Health Council is assessing three areas** in a One Health Framework unique to MSU:

1. Unified ~~College of Medicine~~ (COM + CHM) → *Michigan State University Medicine (MSUM)*
2. New ~~College of Health Professions~~ → *College of Health Sciences (CHS)*
3. ~~Institute of Biomedical Research~~ → *One Health Research Network*

The Accreditation Taskforce is supporting all areas of this work

# Stakeholder engagement to date

## ‘Share Your Voice’ survey

*As of August 2025*

<b>469</b>	>	<b>210</b>	<b>109</b>	<b>35</b>
Total respondents <sup>1</sup>		Faculty	Staff	Students

## Individual & group engagements

*As of April 2025*

<b>1,000+</b>	>	<b>200+</b>	<b>720+</b>	<b>100+</b>
Individuals engaged		In-person	Virtually	Small groups (<5)

## Council & taskforce representatives

*As of August 2025*

<b>48</b>	>	<b>12</b>	<b>36</b>
OHC and Taskforce representatives		OHC representatives across 6 Colleges	Taskforce representatives across 10 Colleges

1. Includes Other (n=25) such as community members, community partners, and/or non-profits; no response (n=31)

# Michigan State University Medicine (MSUM)

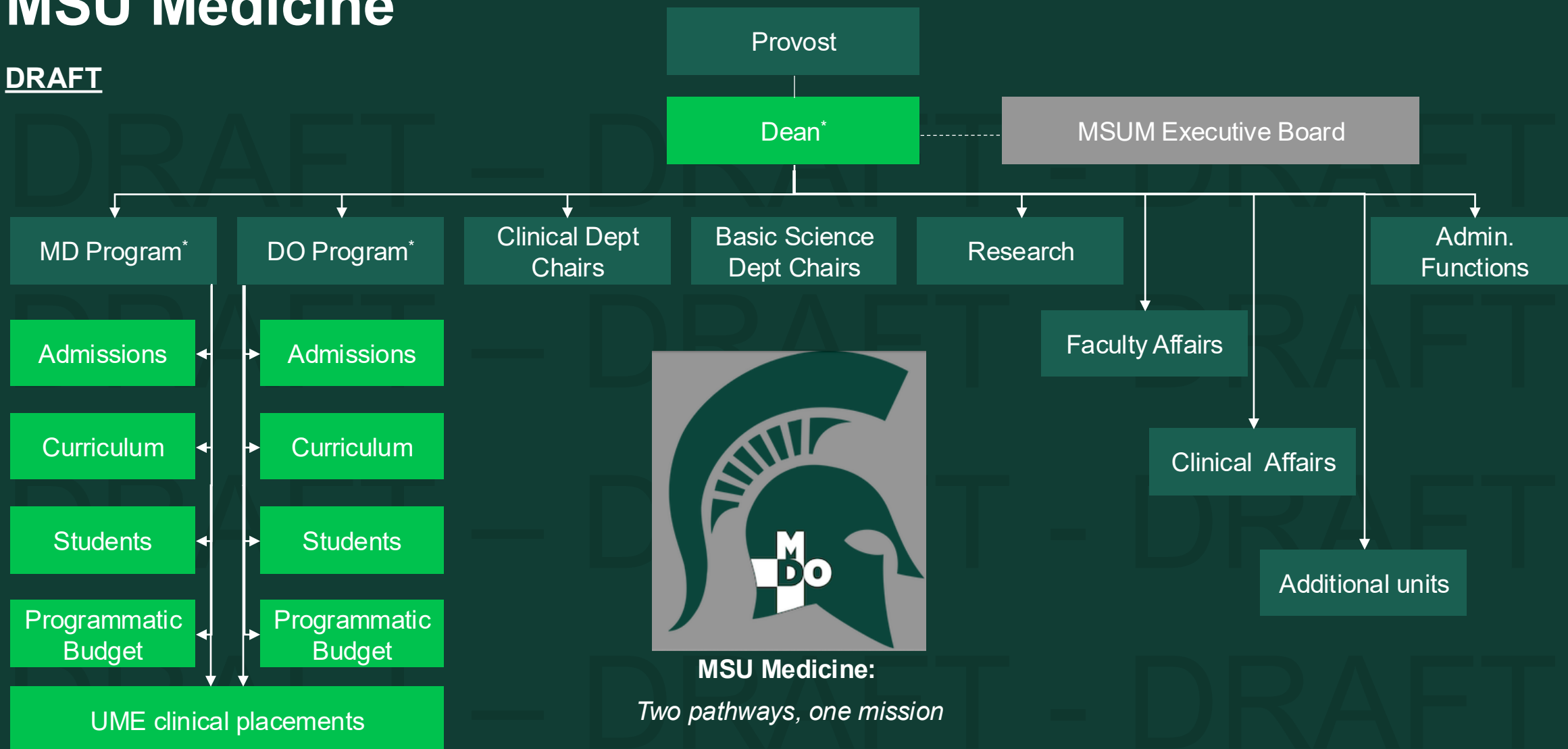
*Two pathways, one mission*

MSU Medicine unites our strengths in MD and DO education to form one of the nation's largest, most collaborative medical education providers. Together we can **expand clinical placements and research opportunities, enhance interprofessional education, and strengthen partnerships with health systems and communities** – enriching student experiences, elevating MSU's profile, and preparing graduates for Michigan's evolving healthcare needs.



# MSU Medicine

**DRAFT**



PA Medicine to remain in Michigan State University Medicine  
Accreditation discussions ongoing; no barriers identified

\* Serves on HCI Governing Board and HFH + MSU Joint Operating Committee

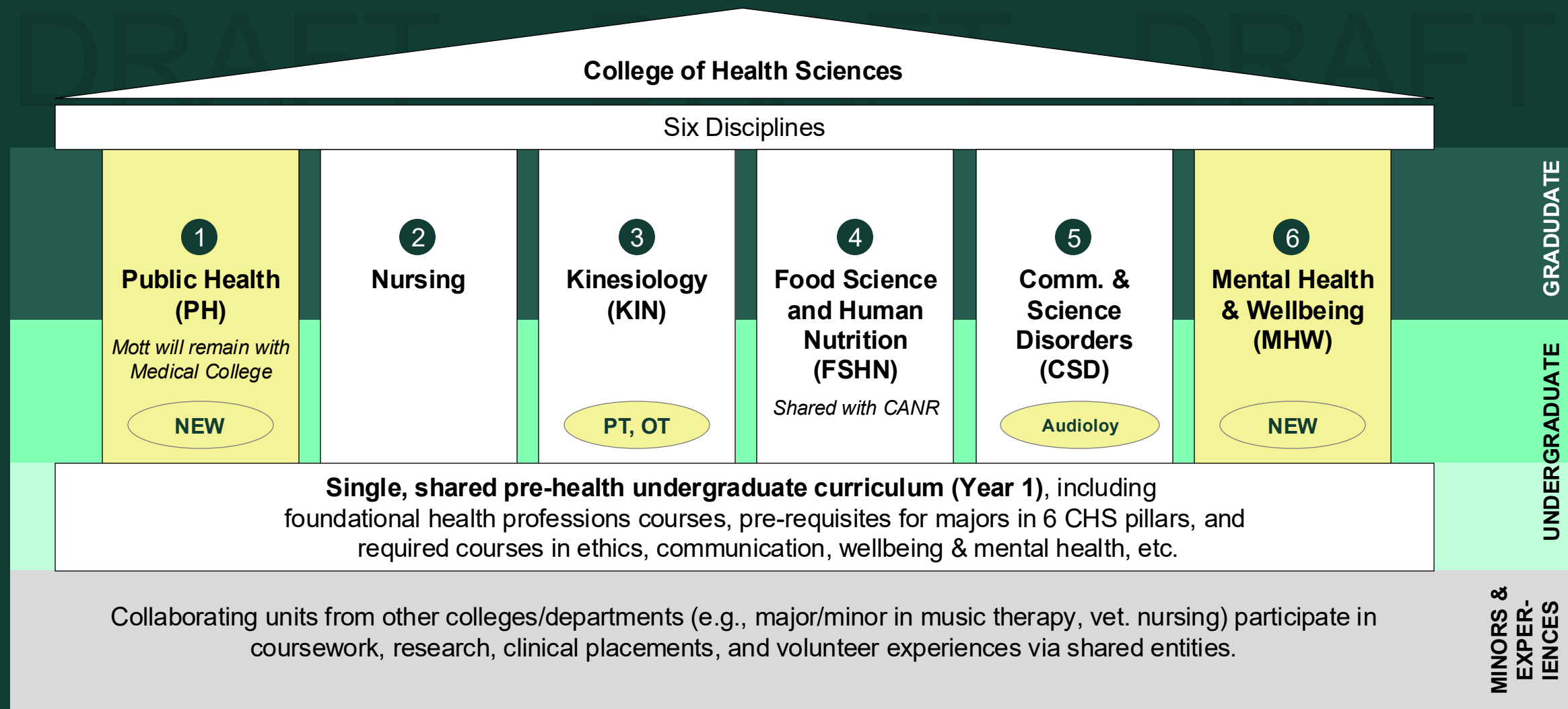
# College of Health Sciences

*The next generation of team-based health care*

CHS brings together Michigan State University's considerable talent from a diversity of health-focused programs at MSU under a cohesive and united structure. This integration allows for **innovative curricula, enhanced interprofessional education and shared learning, stronger collaborative research, and more coordinated service** to students, communities, and the healthcare industry.

# College of Health Sciences

DRAFT



# One Team, One Health Research Network

*MSU's unified front door for collaborative health innovation*

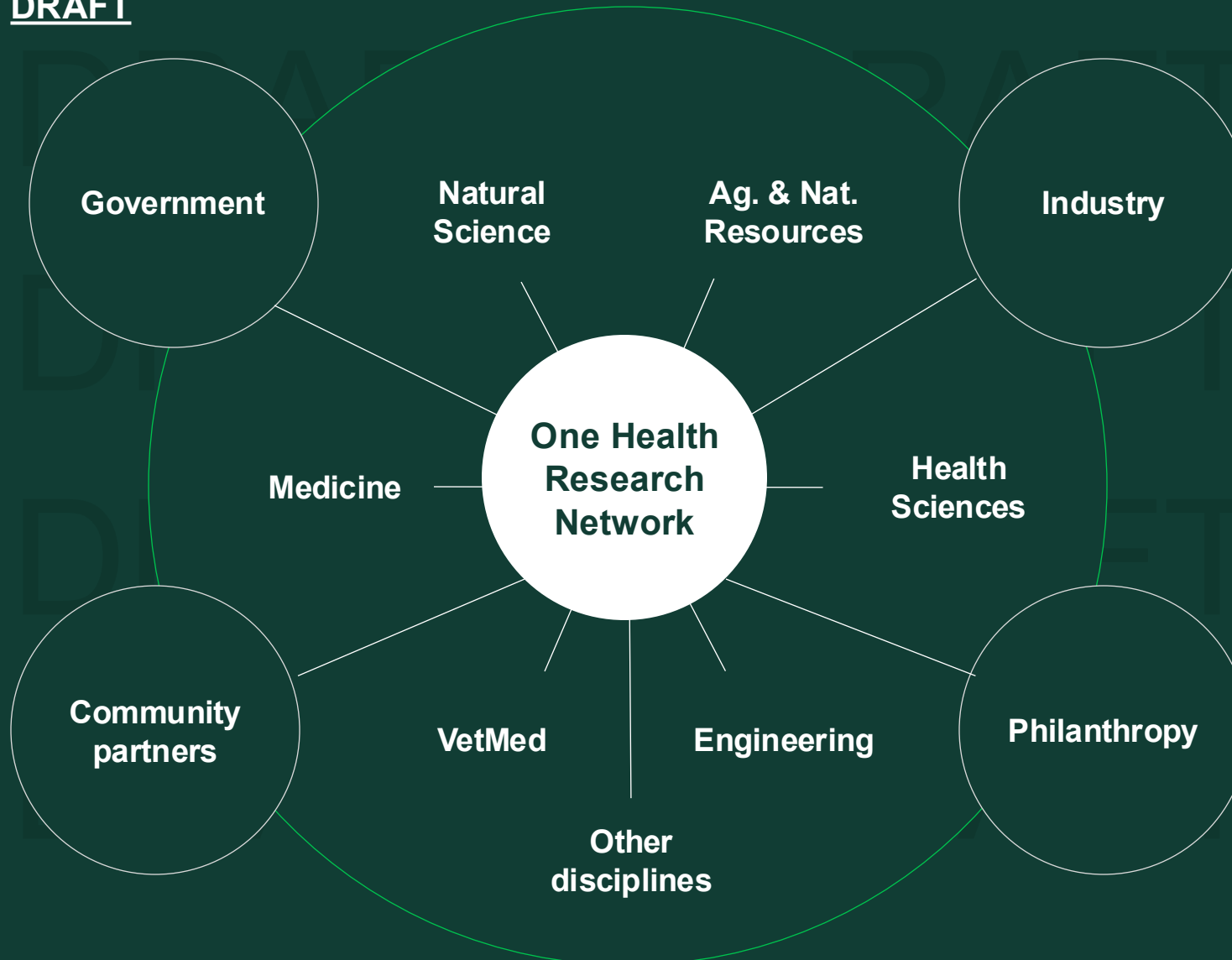
The One Health Research Network combines MSU's broad strengths in human, animal, and environmental health to address otherwise unsolvable (or smoldering) challenges. By aligning colleges, mobilizing resources, and cultivating high-impact partnerships with government, industry, philanthropy, and community partners, the Network drives interdisciplinary discovery and positions MSU as a national and global leader in One Health.

# One Health Research Network

Within MSU Office of Research and Innovation

DRAFT – PRELIMINARY – NOT FOR DISTRIBUTION

**DRAFT**



The Network serves as:

- **Coordinator & primary point of entry (“front door”)** for One Health research at MSU
- **External relationship builder** to expand partnerships with government, industry, and philanthropy
- **Collector & distributor of resources** to drive new programs, funding, and cross-college collaboration
- **Platform for visibility & thought leadership** through integrated research, speaker series, and symposiums

# Stakeholder engagement: What comes next

## *Preliminary engagement approach:*

### **Who: Engage with academic governance**

Meet with the Steering Committee to co-create a roadmap for engaging stakeholders

### **How: Use collaborative design process**

Partner with a third-party facilitator to gather inclusive feedback through:

- **Interactive Survey:** Short, video-based surveys to share information and gather targeted, equitable feedback
- **Focus groups:** Build on prior insights through targeted discussions to refine vision and define success

## *For discussion:*

- What **committees** need engagement? What other **groups and perspectives** should be included?
- What are the **most effective ways to engage** across stakeholders?
- How do we seize this **founding moment** to define the future of health at MSU?





# Discussion

# Stakeholder engagement: What we've heard

	Positive sentiment	Challenges / concerns raised
<b>Cross-cutting</b>	<p>Excitement around <b>One Health vision</b></p> <p>Desire across stakeholder groups to <b>continue providing input</b> and engaging on decision-making</p>	<p>Clarity on <b>timeline and implications for job security</b></p> <p>Desire to <b>understand more details</b>, given distrust of past structures, and data-driven justification</p>
<b>MSU Medicine</b>	<p>Enthusiasm for <b>increased collaboration, interprofessional and interdisciplinary education</b>, and a <b>shared vision</b></p> <p>Interest in <b>harmonizing elements of both programs</b> (e.g., mentoring, faculty affairs)</p>	<p>Desire to <b>preserve the distinct identities and cultures</b> of allopathic and osteopathic medicine (incl. unique curriculum, external partnerships)</p> <p>Concerns about <b>impact on residency placements, reputation</b></p>
<b>College of Health Sciences</b>	<p>Optimism about opportunities for <b>increased collaboration</b> and more <b>integrated health sciences career pathways</b></p> <p><b>Proper integration</b> can support student success</p>	<p>Specific <b>department/college-level concerns</b> around which programs will move and when; and rankings impact</p> <p>Concern about loss of college status for Nursing</p> <p><b>Operational complexity</b> (e.g., overlapping leader roles, systems, budget realignments, accreditation)</p>
<b>One Health Research Network</b>	<p>Energy and momentum to <b>collaborate on new, interdisciplinary research</b></p>	<p>Concerns around <b>increased siloes</b></p> <p>Failure to strategically engage key stakeholders</p>