

# Opioid Trends in Michigan & Rural Health Response

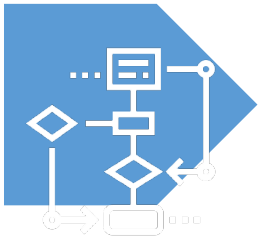
Jared Welehodsky  
State Assistant Administrator  
Office of Chief Medical Executive



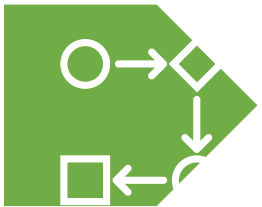
# Objectives



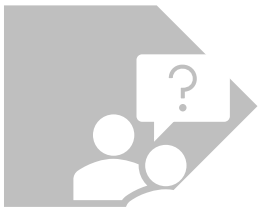
Objective 1: Provide an overview on Michigan's opioid crisis and key statewide trends.



Objective 2: Highlight recent accomplishments and data-driven progress in prevention, harm reduction, treatment, and recovery.



Objective 3: Share examples of settlement-funded work that supports rural communities and strengthens local systems.



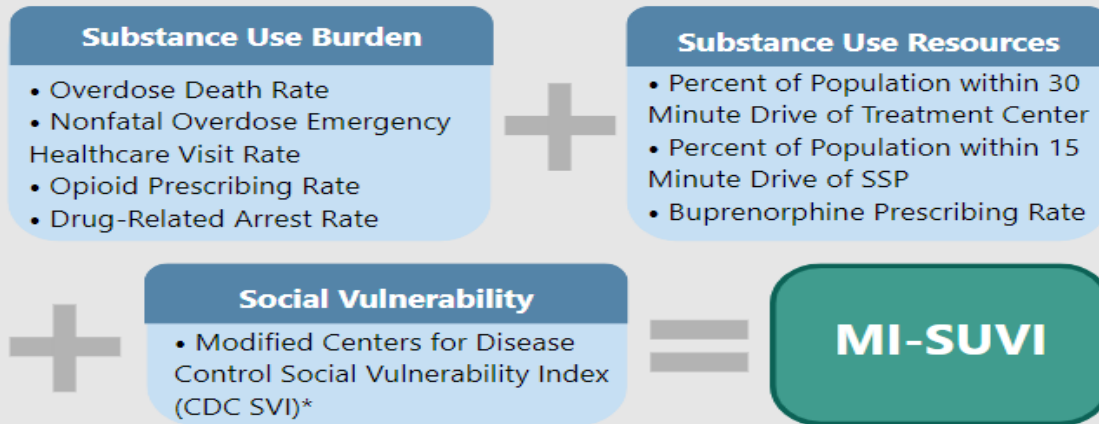
Q & A

# Substance Use Vulnerability Index (SUVI) – 2022 Data

## Michigan Substance Use Vulnerability Index

[View MI-SUVI Overview](#)[View County Scorecard](#)[Compare Data Points](#)

The **Michigan Substance Use Vulnerability Index (MI-SUVI)** is a tool for program planning and policy decision-making. The MI-SUVI is a measure of vulnerability to individual and community adverse substance use outcomes, and is a standardized, composite score based on eight indicators related to three "components": substance use burden, substance use resources, and social vulnerability. The below diagram summarizes the MI-SUVI framework.



Each data indicator included in the SUVI is standardized by mean and standard deviation to a z-score. Before adding, the resource component is inverted so that a higher z-score corresponds with a worse outcome. Indicators are equally weighted in components, and components are equally weighted in the MI-SUVI score.

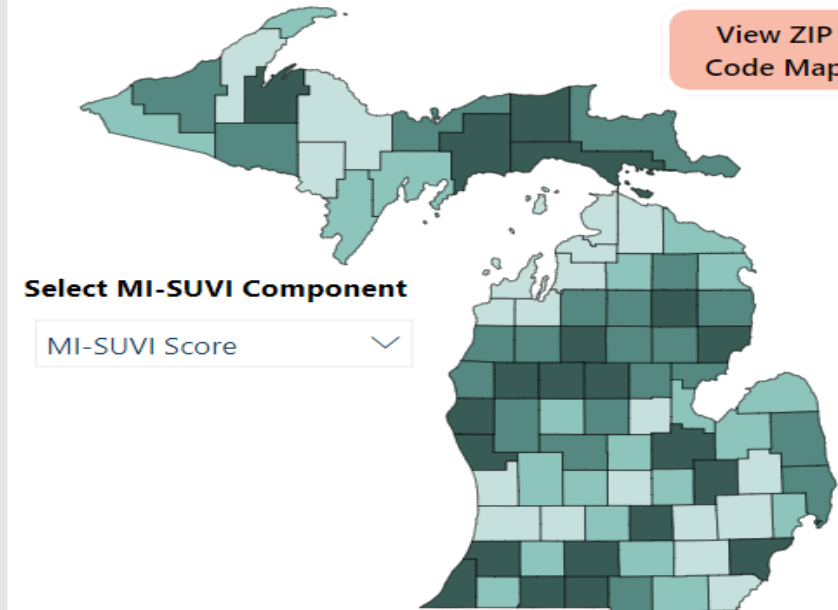
\*The CDC SVI is included as a measure of social determinants of health and was modified to include information on technology and healthcare access.

For more detailed information on the development and methodology of the MI-SUVI and included data indicators, please reference the [MI-SUVI documentation](#). An excel document of the MI-SUVI county/ZCTA-level results is available on [Michigan.gov/OpioidsData](https://Michigan.gov/OpioidsData) below this data dashboard.

## 2022 MI-SUVI County Results

### Percentile Rank

0-25th 25th-50th 50th-75th 75th-100th  
Least Vulnerable Most Vulnerable



### Select MI-SUVI Component

MI-SUVI Score

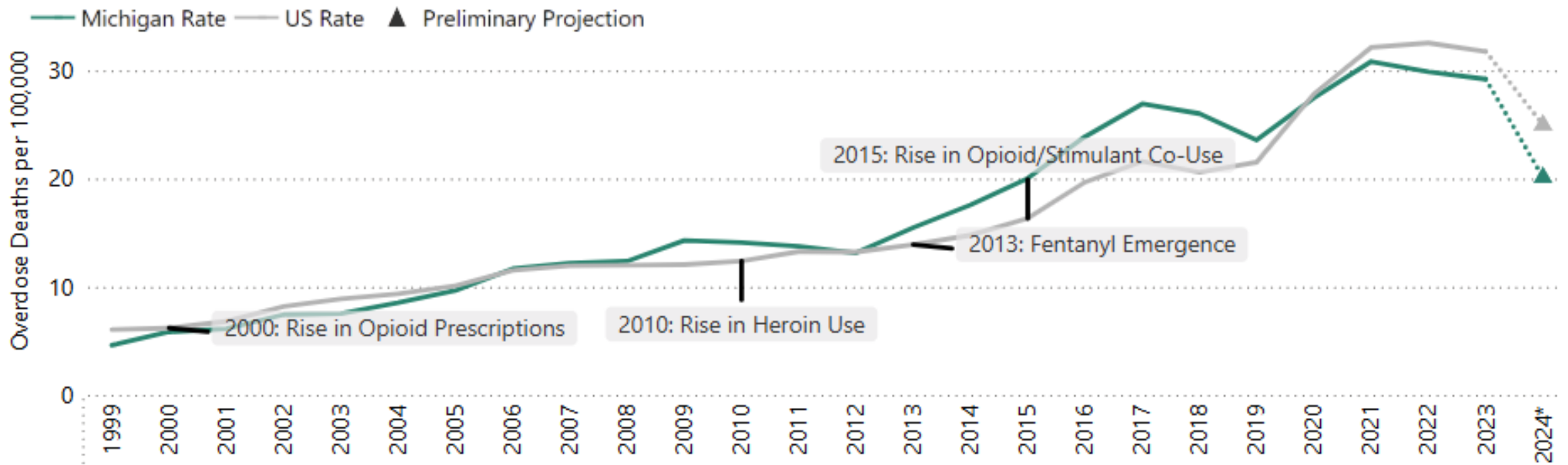


MI-SUVI and component scores are **Z-scores**. Hover over the info button to the left for an explanation of Z-scores.

# Current State: MI Overdose Death Rate

While we've seen great progress in recent years, **we predict that when 2024 data is finalized, we will still see around 1,900 overdose deaths.**

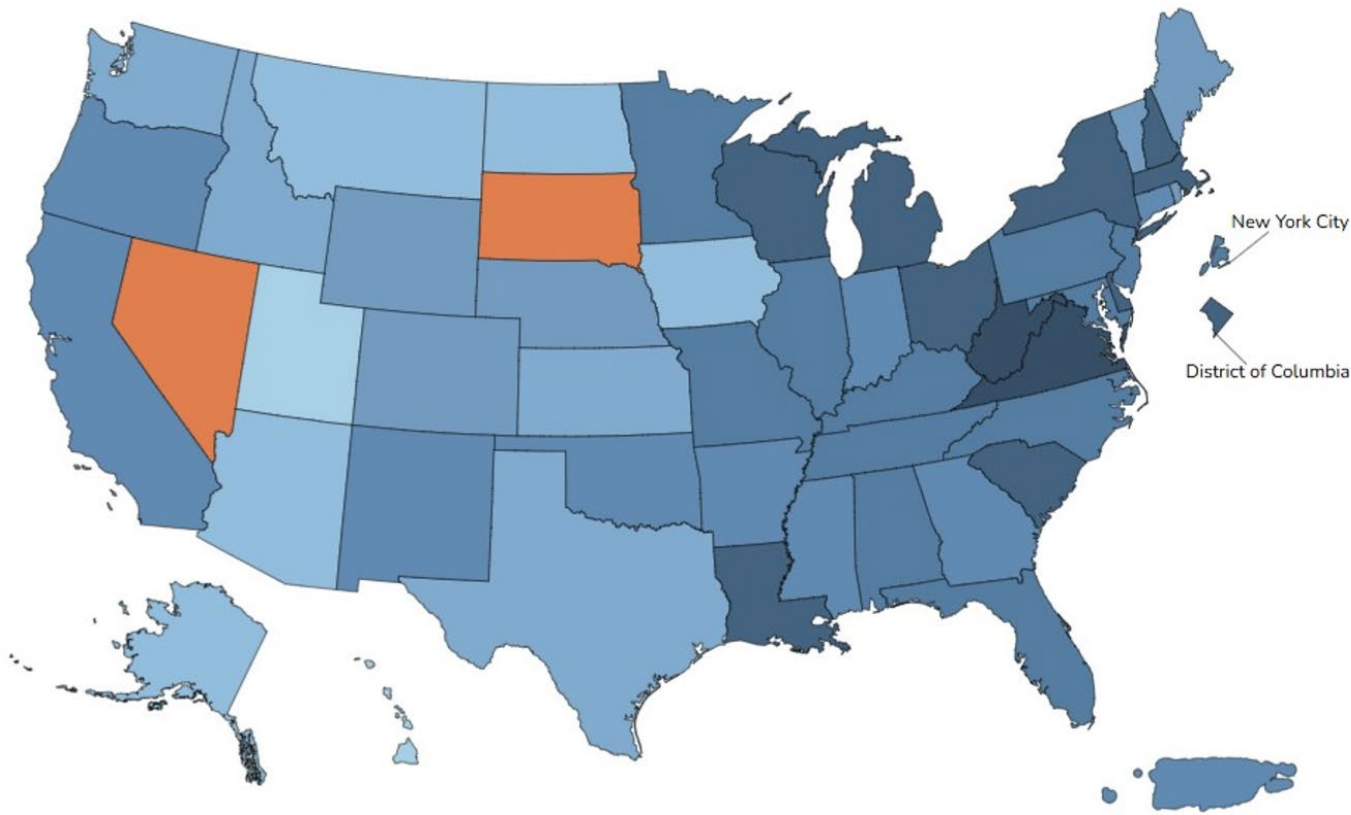
## Overdose Deaths per 100,000 Residents, Michigan vs United States, 1999 to 2024



\*2024 data are preliminary data and subject to change upon finalization. 2024 data are a projection based on January-July 2024 data.

# Significant Drop in Overdose Deaths

Figure 1b. Percent Change in Predicted 12 Month-ending Count of Drug Overdose Deaths, by Jurisdiction: December 2023 to December 2024



[Products - Vital Statistics Rapid Release- Provisional Drug Overdose Data](#)

Legend for Percent Change in Drug Overdose Deaths Between 12-Month Ending Periods

-43.5% 3.5%

- Provisional data indicates a 36% reduction in drug overdose deaths from Dec. 2023 to Dec. 2024.
  - This means over 1000 lives saved in 2024 compared to 2023.
  - This puts Michigan in the top 5 performing states in the nation.

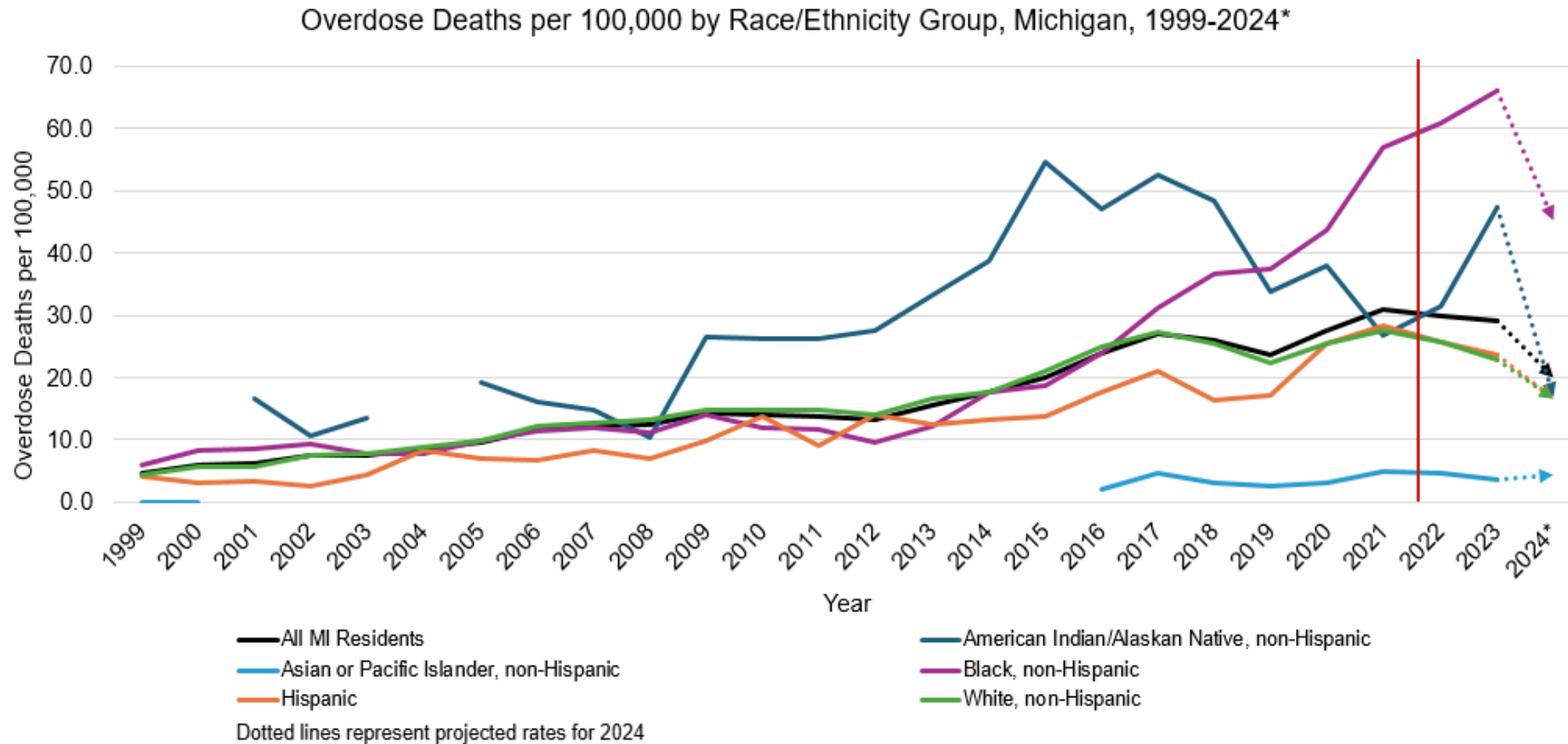
Explore MI Data:



Request Naloxone:



# Overdose Death Rates Decreasing; Racial Disparities Persist



- Rates among Black and AIAN populations have continued to rise; Black residents were 2.9 times more likely to die of an overdose than white residents in 2023.
- Projections for 2024 suggest rates may further decline, including among Black and AIAN populations.

*\*2024 data are projections based on January-June 2024 preliminary data.*

# Michigan Opioid Settlement

Settlements from opioid manufacturers,  
distributors and pharmacies

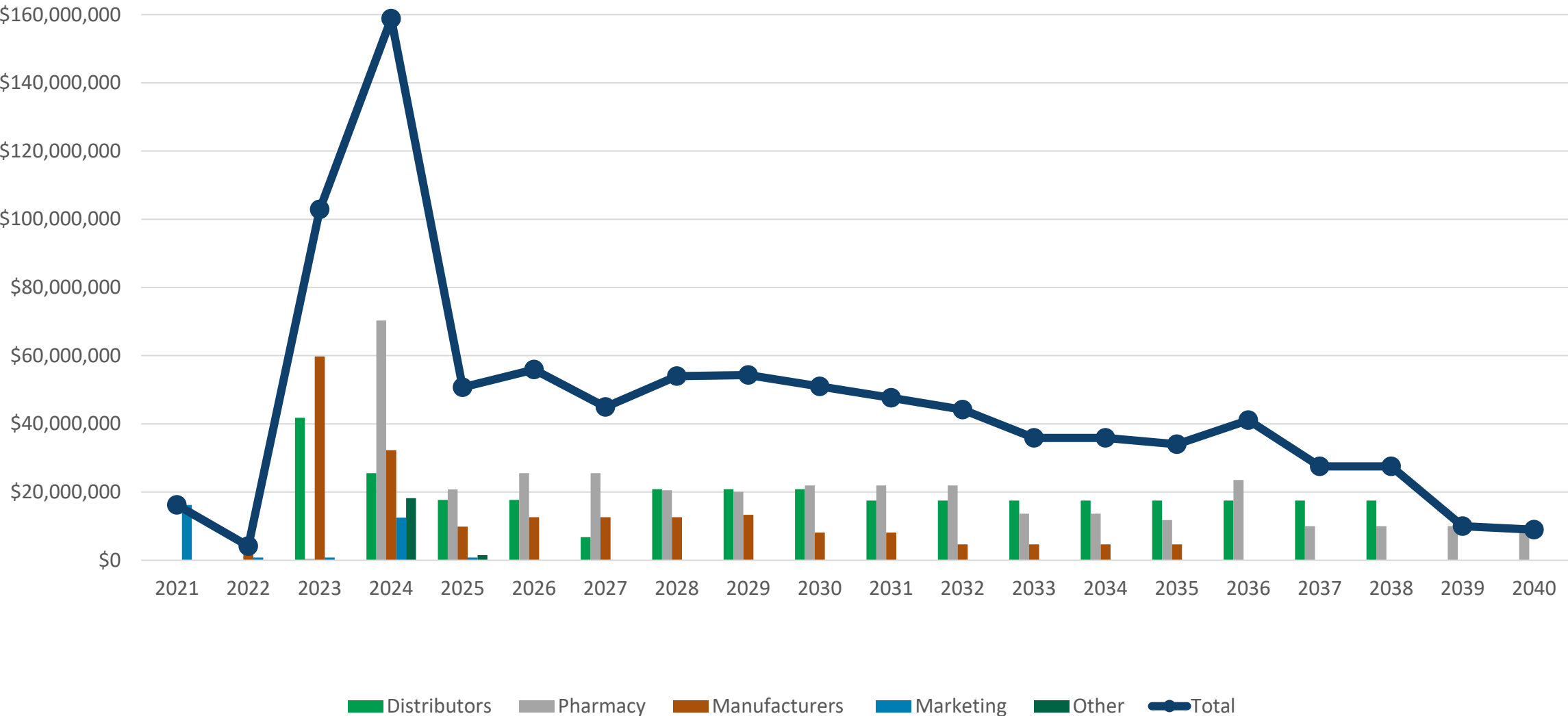
**Nearly  
\$1.6 billion  
by 2040**

50%  
Local

50%  
State



# Settlement Payments Over Time





# Michigan Opioids Task Force & MDHHS Strategic Planning

# Michigan Opioids Task Force



## Executive Order 2019-18 Updated: Executive Order 2022-12

- Lead statewide efforts to develop, recommend and implement response actions to the opioid epidemic.
- Core functions:
  - ✓ Identify root causes.
  - ✓ Guide strategic planning and policy development.
  - ✓ Advise on opioid settlement spending.
- Reports to MDHHS and the Executive Office of the Governor.
- Current membership appointed in June 2023; includes regional representatives with substance use disorder (SUD) expertise and state department representatives.

# Opioids Task Force Guiding Principles

## What are we trying to do?

**Overarching goal: Reduce overdose deaths and eliminate racial disparities**

## How do we get there?

### Equity at the core

- Prioritize equity in all aspects of programming and operations.
- Address racial disparities in overdose deaths and access to services to achieve improved outcomes.

### Maximize Impact

- Monitor and track program implementation and development.
- Identify overarching outcome/impact measures to show success.

### Data-Informed Decisions

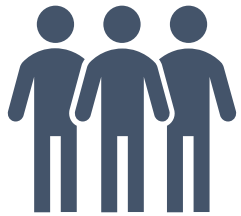
- Utilize available data and leverage data sharing agreements to drive strategic decisions.
- Ensure evidence-based practices guide our actions.

### Communicate to improve trust

- Communicate openly, timely, and consistently to enhance trust.
- Ensure spending reports are clear and accessible; show where and how funds are being spent.

# OTF Subcommittees

## 2024 OTF Subcommittees: Prevention, Harm Reduction, Treatment, and Recovery



Subcommittees formed in March 2024 to update strategy and support implementation.



Through cross-sector collaboration created Substance Use Response Framework goals & metrics

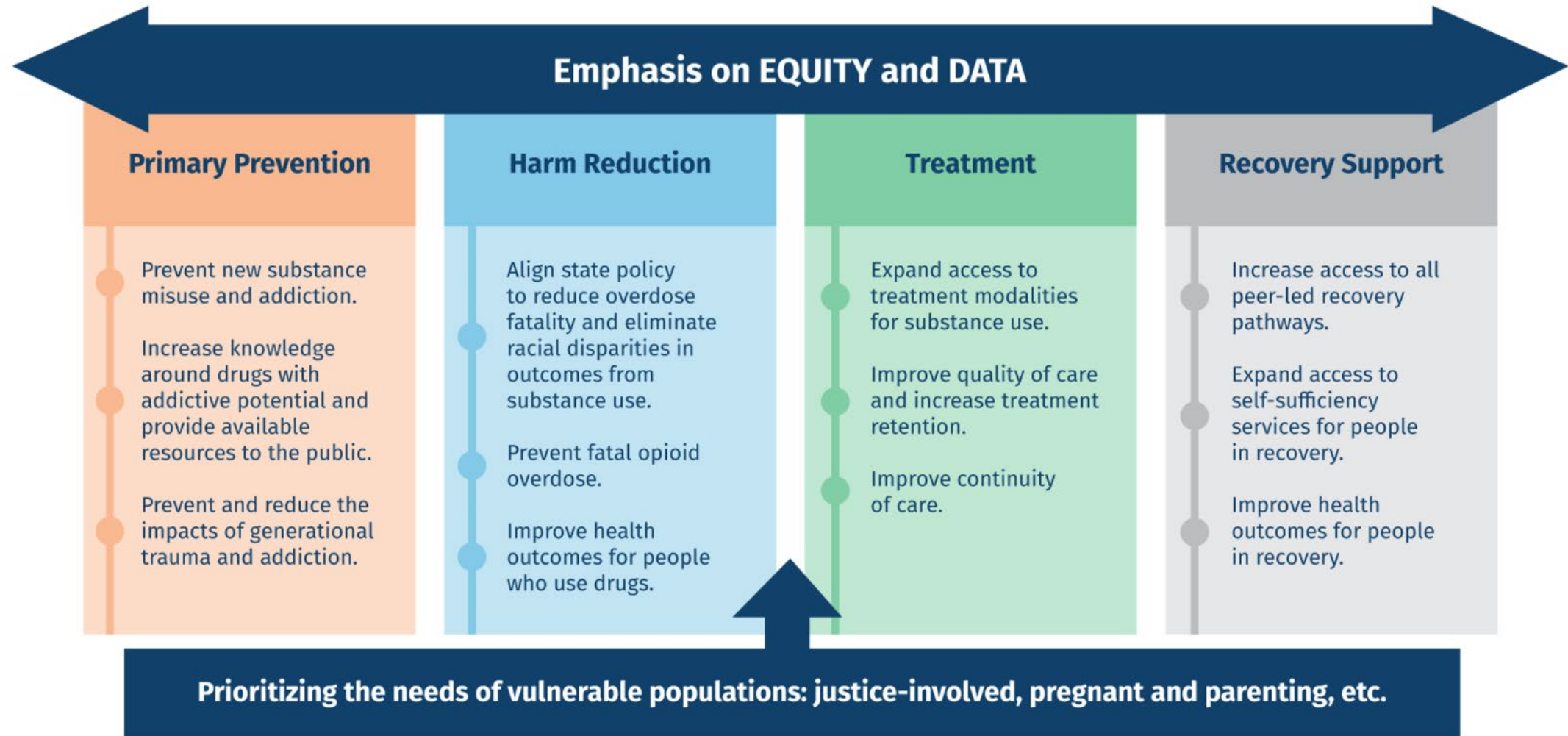


Conducted gaps analysis for Michigan's SUD landscape.



Developed spending and policy recommendations.

# Substance Use Response Framework (Goals)



# Accomplishments

**Overall Goal: Dropped from  
14th highest fatal overdose  
rate to 37th in six years.**



## Prevention

Launched media awareness campaign.

Using research and polling to tailor messaging and measure effectiveness.

## Harm Reduction

Distributed more than 1 million naloxone kits, resulting in 34,000 overdose reversals.

Increased clients served from 10,000 in 2019 to more than 100,000 in 2024.

## Treatment

Incentivized 64 providers to provide substance use disorder care to more than 12,000 new clients through loan repayment programming.

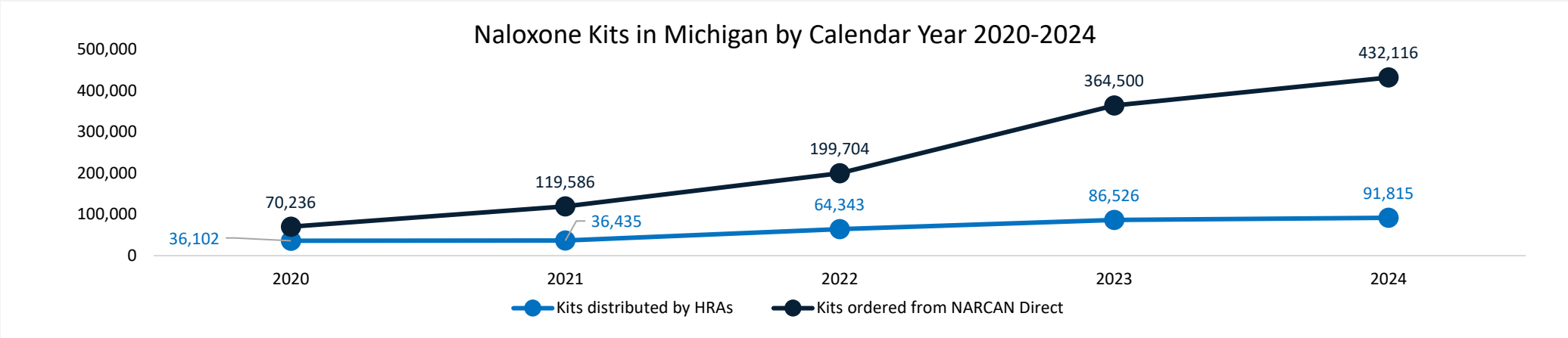
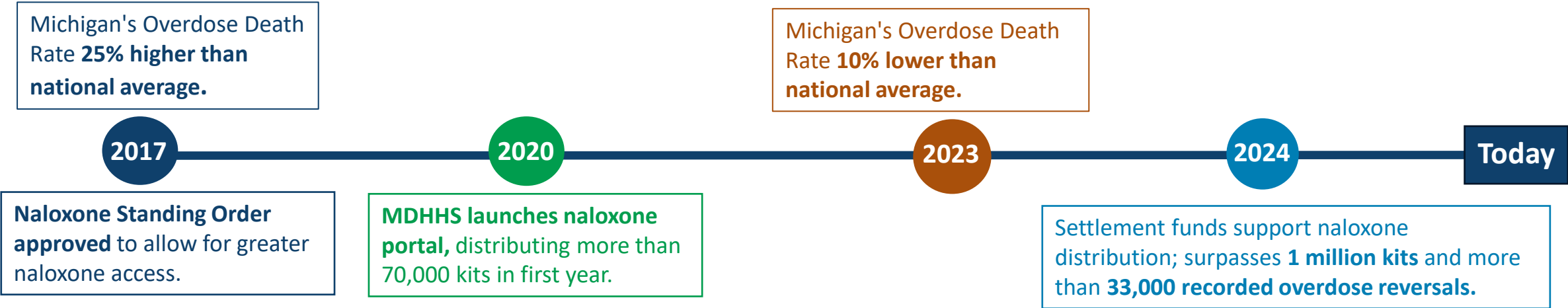
Support infrastructure improvements in several facilities across the state.

## Recovery

Invested in adding more than 200 beds in last two years.

Supported service delivery expansion in recovery organizations.

# Harm Reduction Timeline – Naloxone Distribution





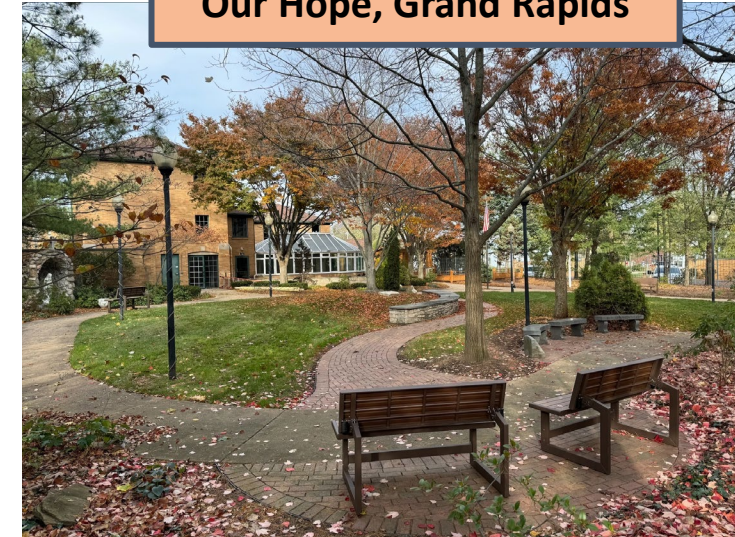
# Examples of Recent Settlement-Funded Projects



Andy's Place, Jackson



Our Hope, Grand Rapids



Sacred Heart's Serenity Hills,  
Berrien County

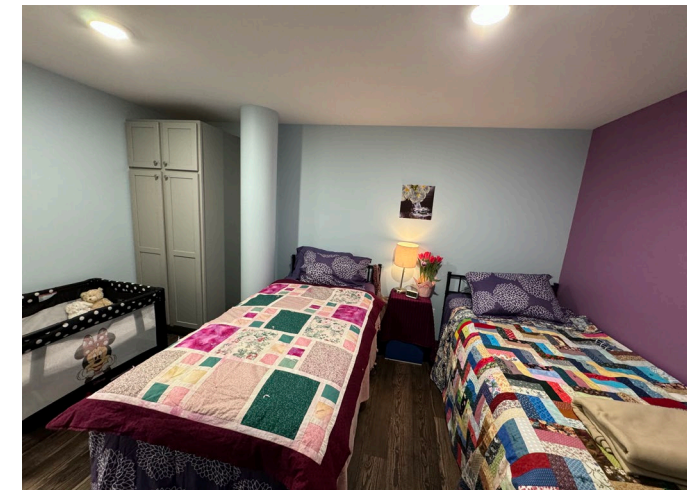


**BLACK  
OVERDOSE  
DEATHS  
IN MICHIGAN ARE  
MORE THAN  
TWICE  
THAT OF ALL  
OTHER RESIDENTS.**

Drug overdoses are preventable.

Today's drugs are more addictive and deadlier than ever before. Keep naloxone on hand. It can reverse an overdose in minutes. If you are using street drugs, check them with xylazine and fentanyl test strips. Learn more at [Michigan.gov/SUD](https://Michigan.gov/SUD).

**MDHHS**  
Michigan Department of Health & Human Services





# Pillar Priorities: Intended Outcomes for Future Settlement-Funded Initiatives

## Prevention

Delay the average age of first use of drugs or alcohol.

## Harm Reduction

Increase use of harm-reduction tools to reduce overdose deaths.

## Treatment

Increase capacity of SUD treatment providers to serve more clients through workforce development.

## Recovery

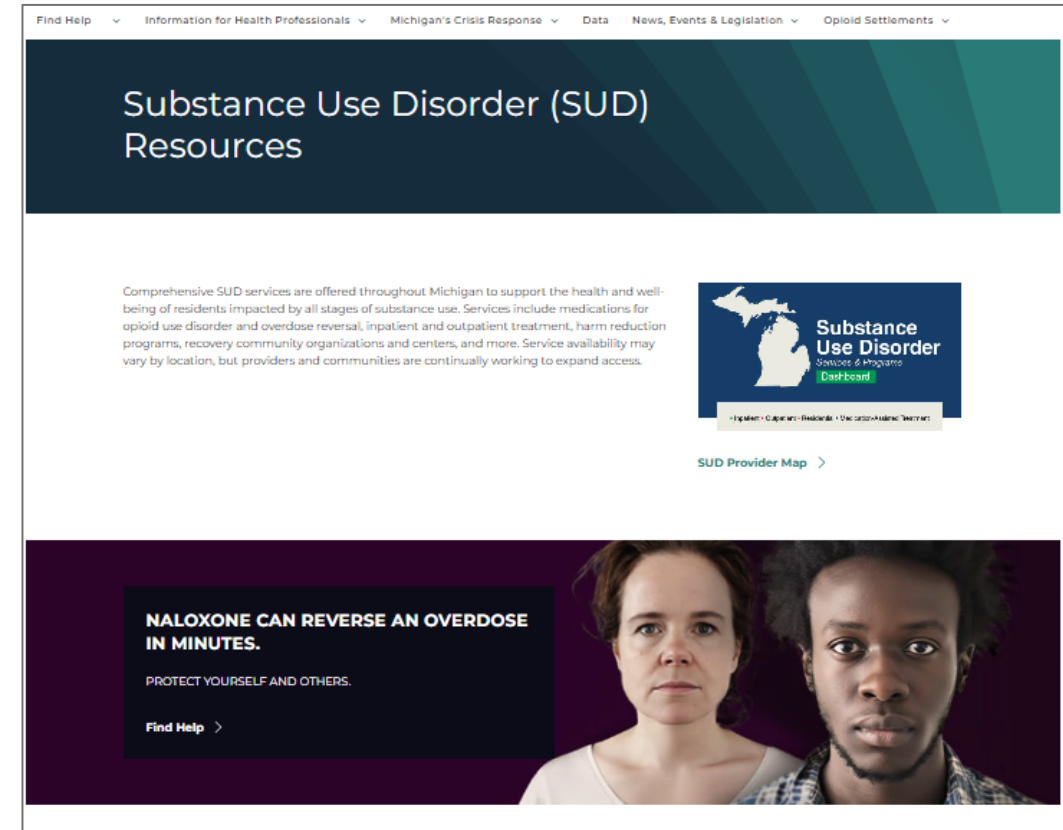
Increase number of recovery and long-term housing solutions to provide more stable environments for individuals in recovery.

**Prioritize and tailor each pillar to address existing and emerging racial and geographic disparities.**

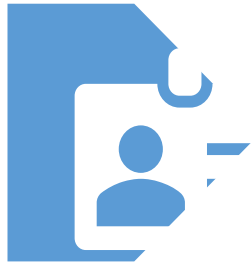


# Additional Opioid Data Sources

- [Michigan's Crisis Response Website](#)
- [Settlement Data](#)
- [Michigan Overdose Data to Action](#)
- [Public Health Data by District](#)
- [MDHHS YouTube Channel](#)
- [Michigan's SUD Resources Website](#)



# Questions?



Jared Welehodsky  
State Assistant Administrator  
Office of the Chief Medical Executive  
MDHHS  
[welehodskyj@michigan.gov](mailto:welehodskyj@michigan.gov)

# Thank you!

