

Advancing Maternal Health Equity: Delivering solutions through Research, Community, Practice and Policy

Natalie D. Hernandez, PhD, MPH
Executive Director, Center for Maternal Health Equity
Assistant Professor, Department of Community Health and Preventive Medicine

Objectives

Understand

Understand the goals and vision of the Center for Maternal Health Equity

Describe

Describe Birth Equity

Identify

Identify strategies to address birth equity



MOREHOUSE
SCHOOL OF MEDICINE

Center for
Maternal Health Equity

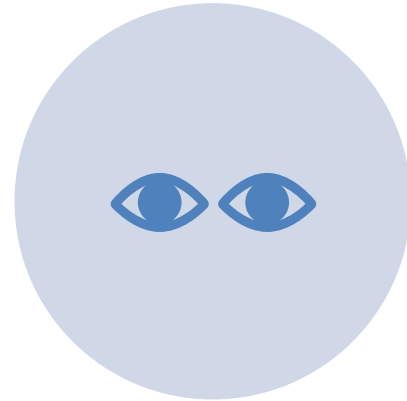
Morehouse School of Medicine Center for Maternal Health Equity



Mission and Vision



MISSION: TO PURSUE EQUITY IN MATERNAL HEALTH BY REDUCING MATERNAL MORBIDITY AND MORTALITY LOCALLY, NATIONALLY, AND GLOBALLY



VISION: TO END HEALTH INEQUITIES IN WOMEN'S HEALTH ACROSS THE LIFESPAN.

Center for Maternal Health Equity



Research

Translational Research
Development and Testing of Interventions

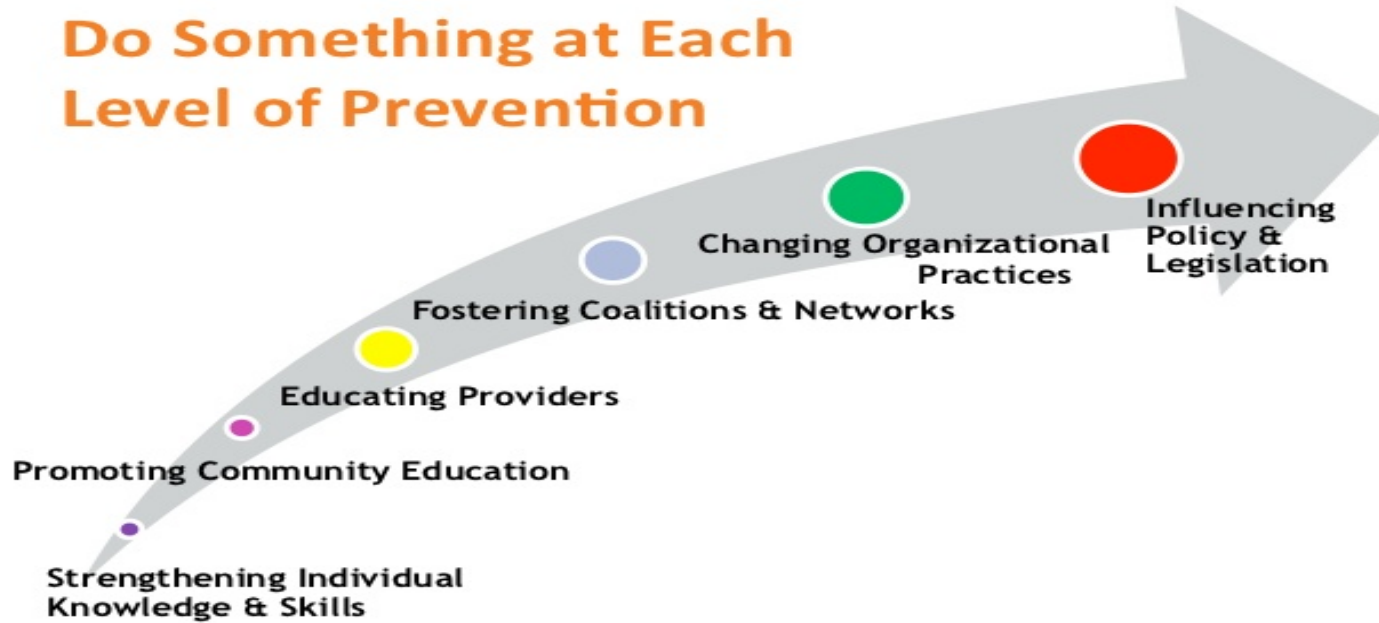
Community

Capacity Building and Technical Assistance
Information Resource Hub
Advocacy and Policy

Training

Team-Based Training
Train the Trainer
Interprofessional Training

Do Something at Each Level of Prevention



Prevention Institute

24



Birth Equity

- What?
- Why?
- Who?
- When?
- Where?
- How?



WHAT DO WE KNOW?

Maternal Mortality in Georgia



Ranked 48th in Country

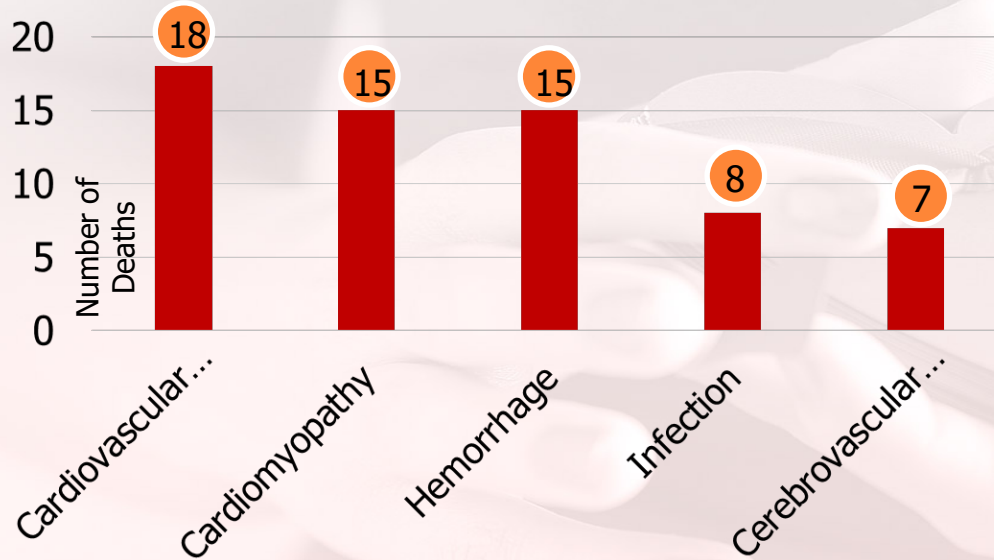
Black women are 2.7x more likely to die of causes related to pregnancy

70% were preventable

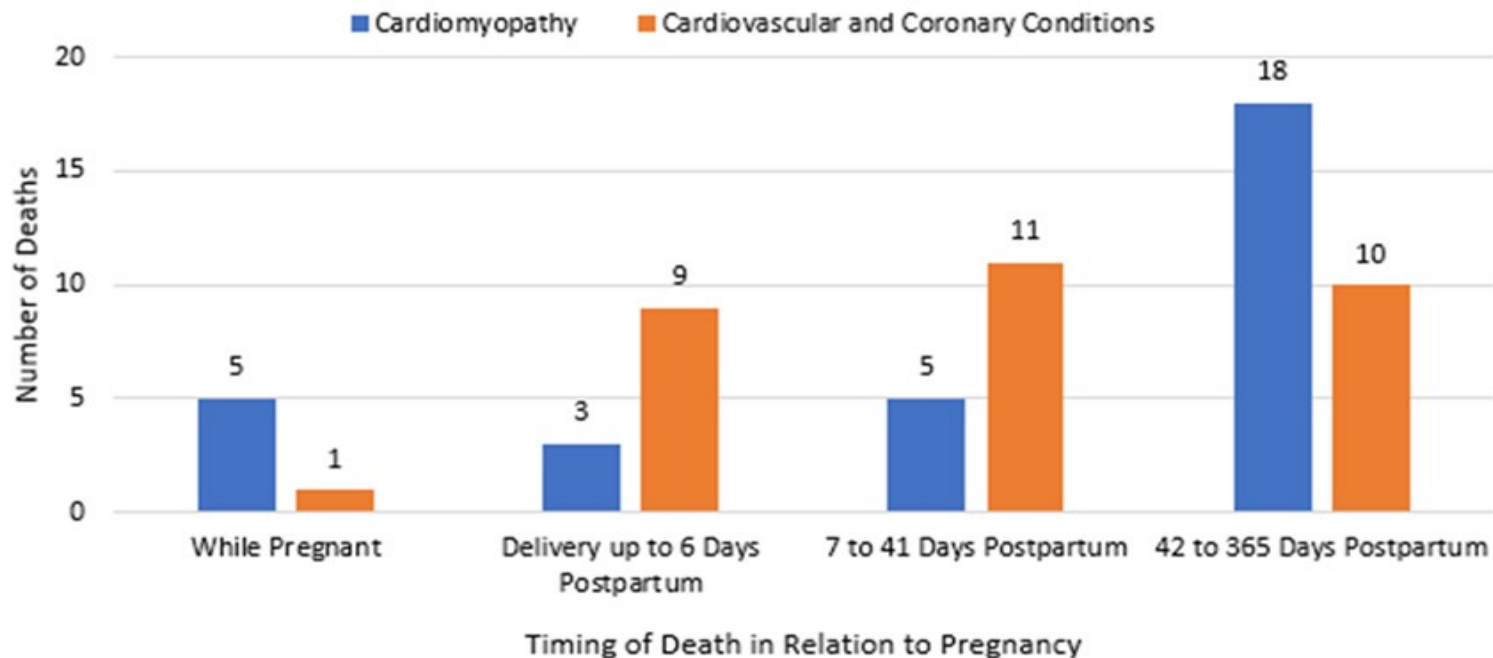
69% Medicaid

[https://dph.georgia.gov/maternal-mortality;](https://dph.georgia.gov/maternal-mortality)

Leading Causes of Pregnancy-Related Deaths, Georgia, 2015-2017



Timing of Pregnancy-Related Maternal Deaths Caused by a Cardiac Condition, 2012-2017 (N=62)



Cause of death was determined by the Maternal Mortality Review Committee



For every maternal
death, 100 women
experience severe
maternal morbidity

WHY SHOULD WE CARE?

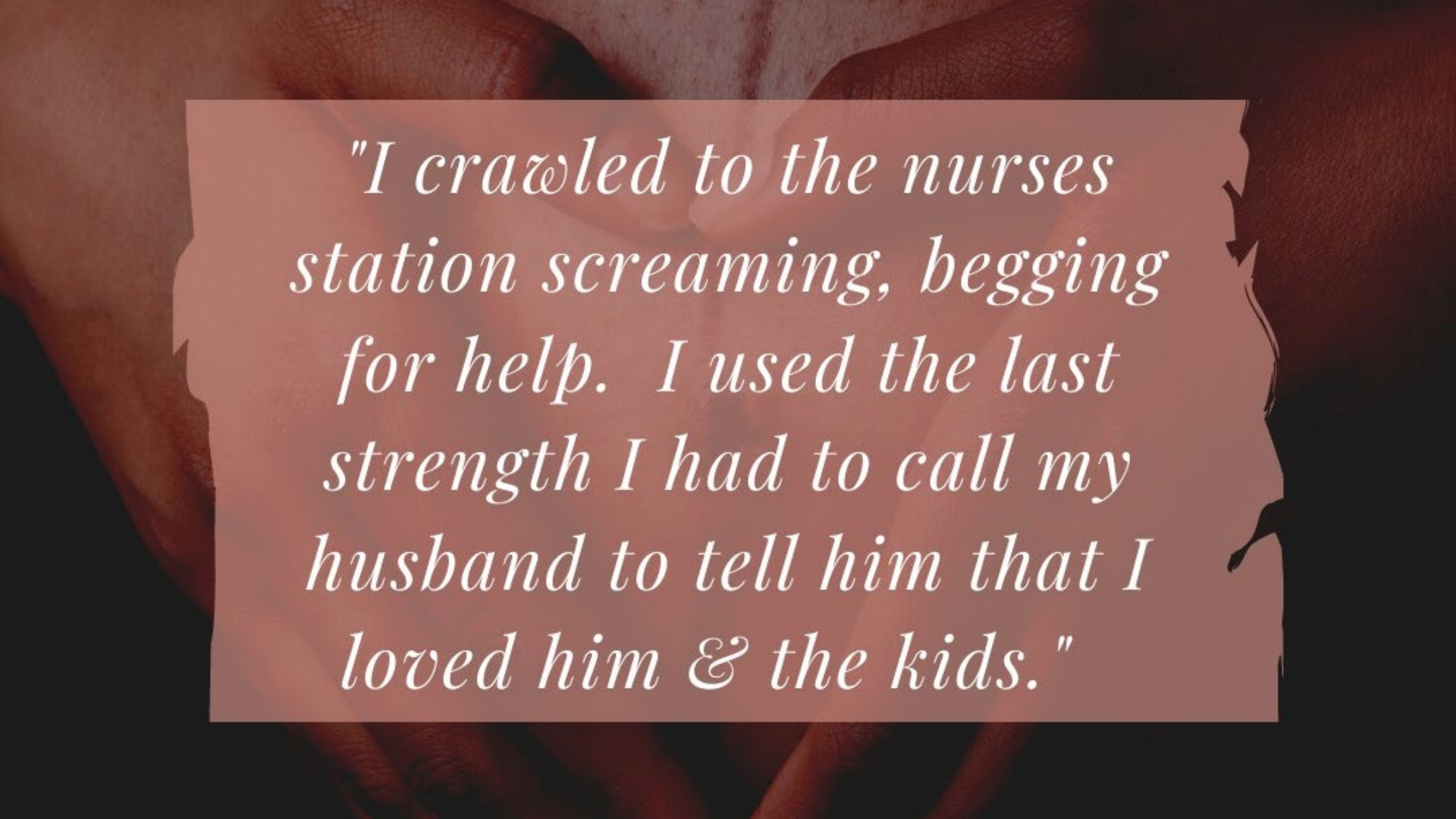
“I woke up 10 days later”



“Help, Help me”



WHO SHOULD WE FOCUS ON?



"I crawled to the nurses station screaming, begging for help. I used the last strength I had to call my husband to tell him that I loved him & the kids."

Improving maternal health outcomes – particularly among Black women – should be a priority



Death of Black mother after birth of first child highlights racial disparities in maternal mortality

Chaniece Wallace, an Indianapolis physician, died due to preeclampsia complications two days after she welcomed her daughter, Charlotte.



LOST MOTHERS

Nothing Protects Black Women From Dying in Pregnancy and Childbirth

Not education. Not income. Not even being an expert on racial disparities in health care.



WHAT IS BIRTH EQUITY?

Birth Equity



- *“Birth Equity is the assurance of the conditions of optimal births for all people with a willingness to address racial and social inequities in a sustained effort”*
 - Joia Adele Crear-Perry, MD, Founder and President of the National Birth Equity Collaborative

Determinants of Maternal Health Inequities

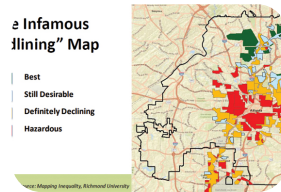
Historical



Slavery



Jim Crow



Redlining

Social and Structural



HOW DO WE DO THIS WORK?

Narrative Medicine “Near Miss” Study

Funded by State and Optum
Survey and Qualitative Interviews

N=120

Community Partners:

Reaching Our Sisters Everywhere, Inc.
Ladies of Hope Ministries, Inc.



WE WANT TO HEAR FROM YOU!

To join the study or get more information, contact our research team at:
nearmiss.chme@gmail.com
404-752-1523

HAVE YOU SURVIVED A LIFE-THREATENING PREGNANCY COMPLICATION?

i.e. severe postpartum hemorrhage, severe pre-eclampsia, eclampsia, sepsis/severe systemic infection, or ruptured uterus

Who can participate in the study?

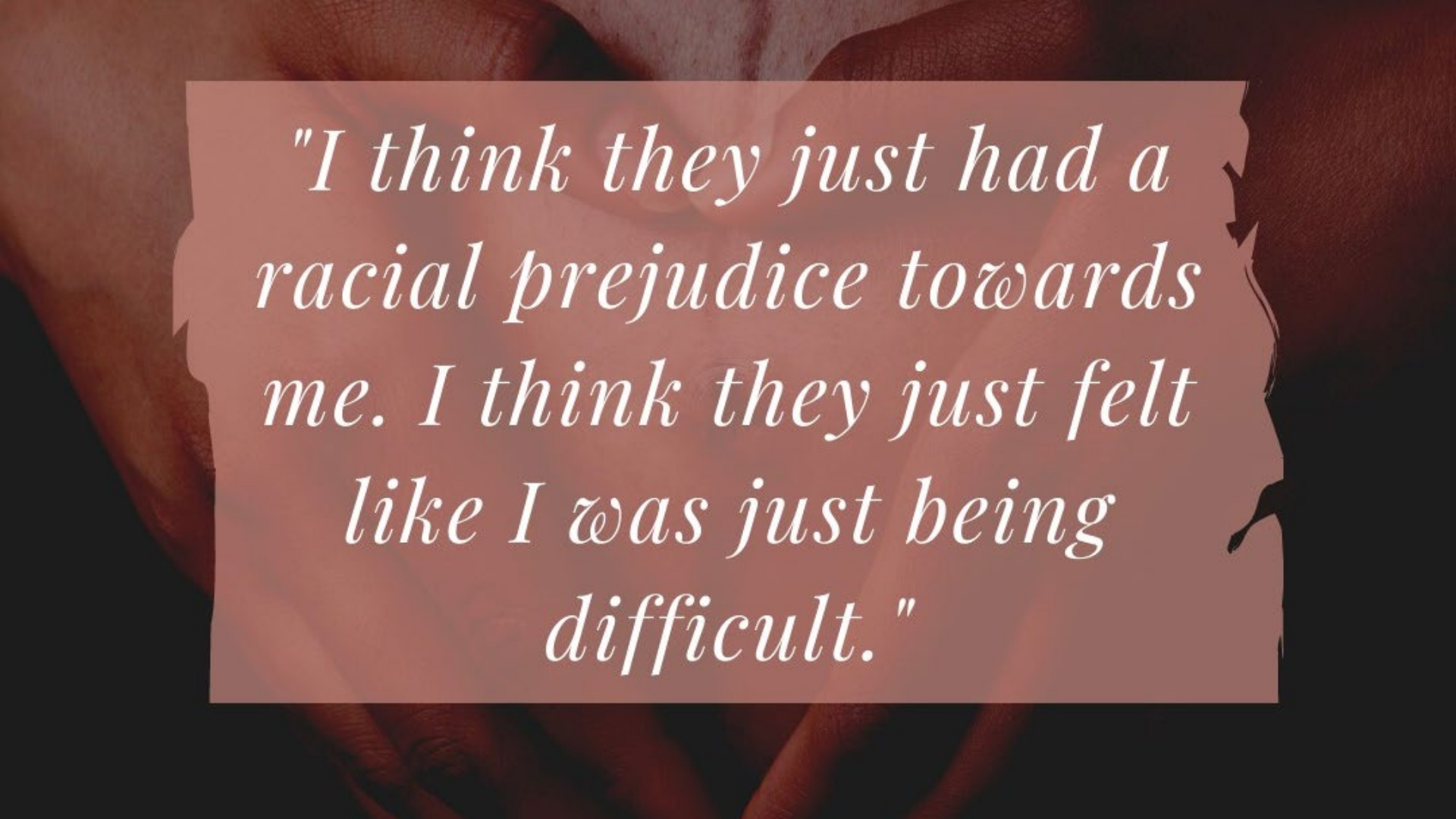
Will I be compensated?

What will I have to do?

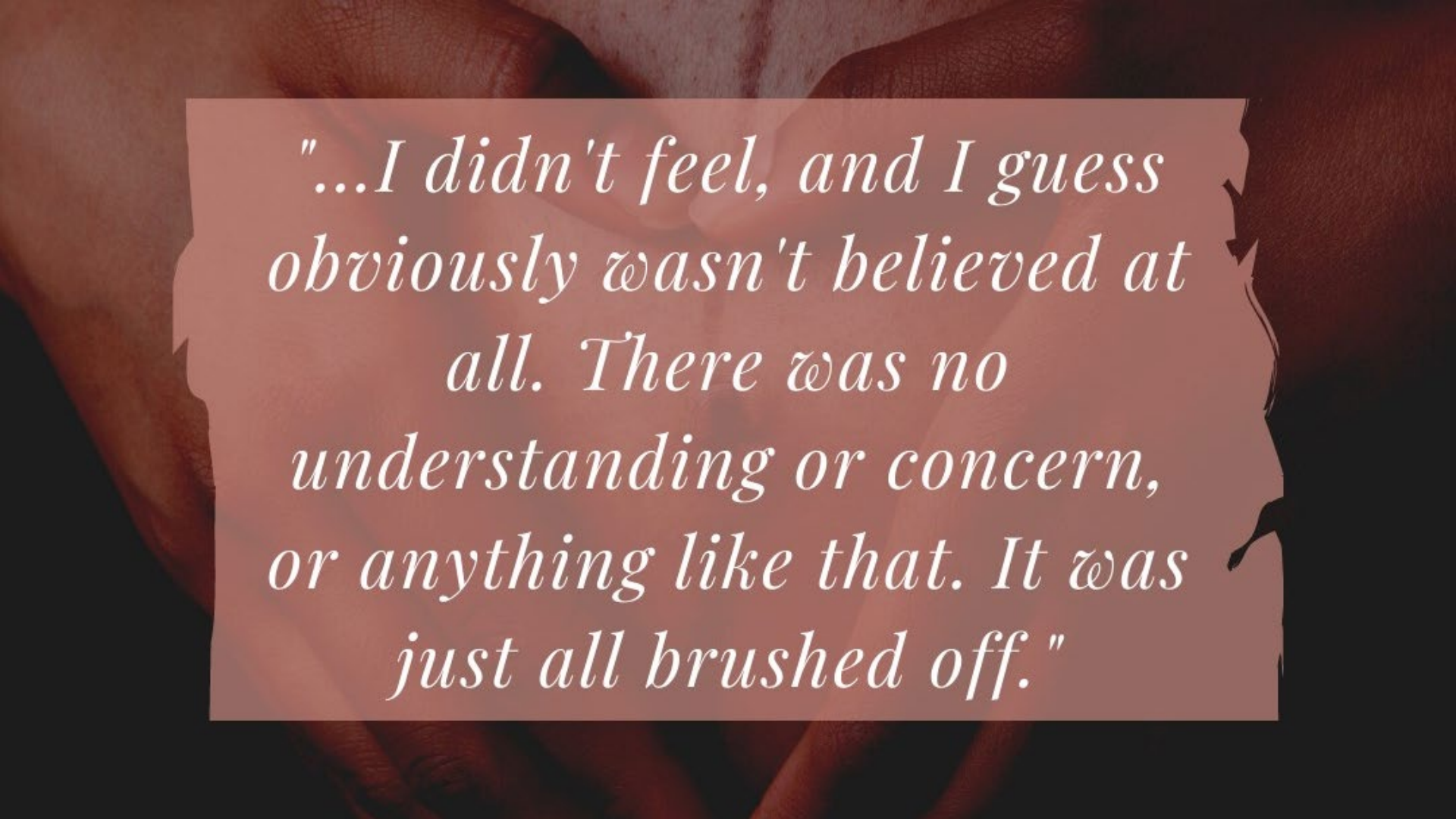
- Persons of color
- Persons over 18 years of age
- Experienced life-threatening conditions related to pregnancy and childbirth
- Persons living in New Jersey, DMV (DC, Maryland, Virginia) area, Georgia and Louisiana
- Persons able to give consent
- Yes, you will be given US \$75 for your time and effort.
- Complete a 2-hour interview (via Zoom or phone), whatever is most convenient for you!

To determine your eligibility, please complete our [screener survey](#):





"I think they just had a racial prejudice towards me. I think they just felt like I was just being difficult."



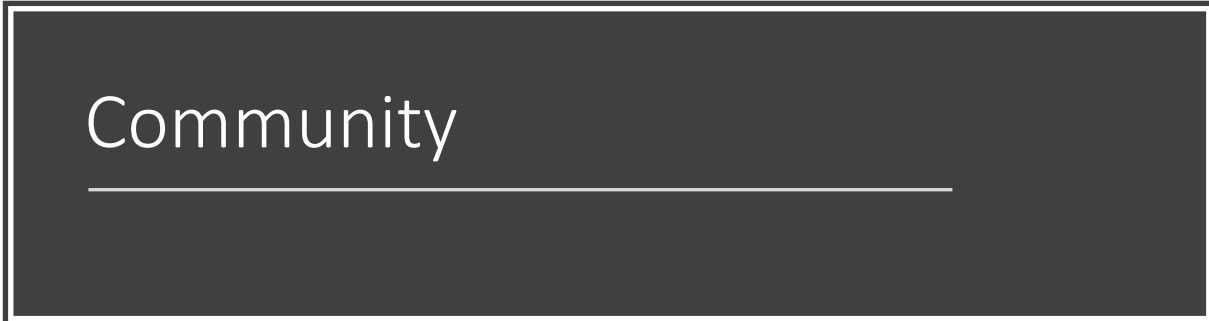
"...I didn't feel, and I guess obviously wasn't believed at all. There was no understanding or concern, or anything like that. It was just all brushed off."



Amplifying Mother's Voices: Person-Centered Research



WHERE CAN WE MAXIMIZE OPPORTUNITIES?



Policy & Advocacy



Maternal Mortality Stakeholder Group





"If you want to go quickly, go alone. If you want to go far, go together." – African Proverb

WHEN?

Now: DEMAND JUSTICE



Acknowledgements

- Michigan State University
- Kathleen Stiffler
- MSM Center for Maternal Health Equity Team
- Black Mothers and Families