



College of Human Medicine
MICHIGAN STATE UNIVERSITY



College of Human Medicine
MICHIGAN STATE UNIVERSITY

Advancing Integrated Mental Health Services in Primary Care Pediatrics

Fall 2022 Michigan Health Policy Forum- October 3, 2022

Lisa M. Lowery, MD, MPH, FAAP, FSAHM

Section Chief of Adolescent & Young Adult Medicine

Assistant Dean for Diversity and Cultural Initiatives MSU College of Human Medicine

mental health COVID family work home anxiety people time increased all because during concerns users really issues feel since care lack difficult going worried job go services patients seen stress lockdown help just loss impact hard young like other access digital due social now some life working around able most increase over children having workers time anxiety people really issues feel since care lack difficult going worried job go services patients seen stress lockdown help just loss impact hard young like other access digital due social now some life working around able most increase over children having workers

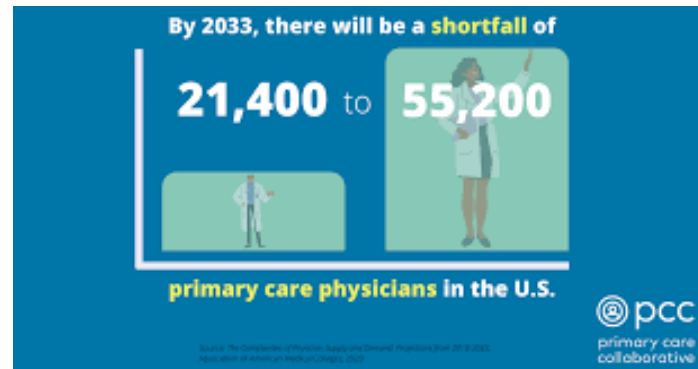
Mental Health Tsunami





Burden in Primary Care

- Basics of health care
–15-20 min visits
- Update any new medical concerns
- Possibly some anticipatory guidance
- Hope there are not any concerns
- More primary offices are having Behavioral Health Specialists in office



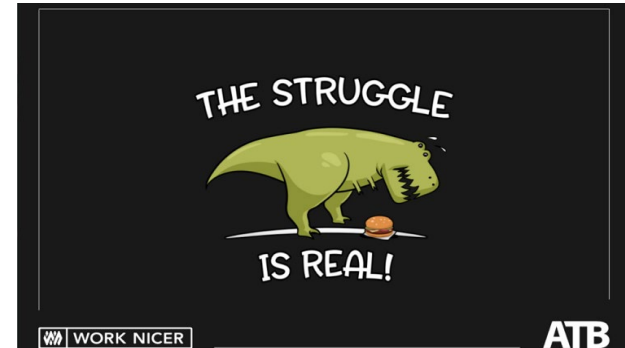
Adolescent Medicine & MSW in practice

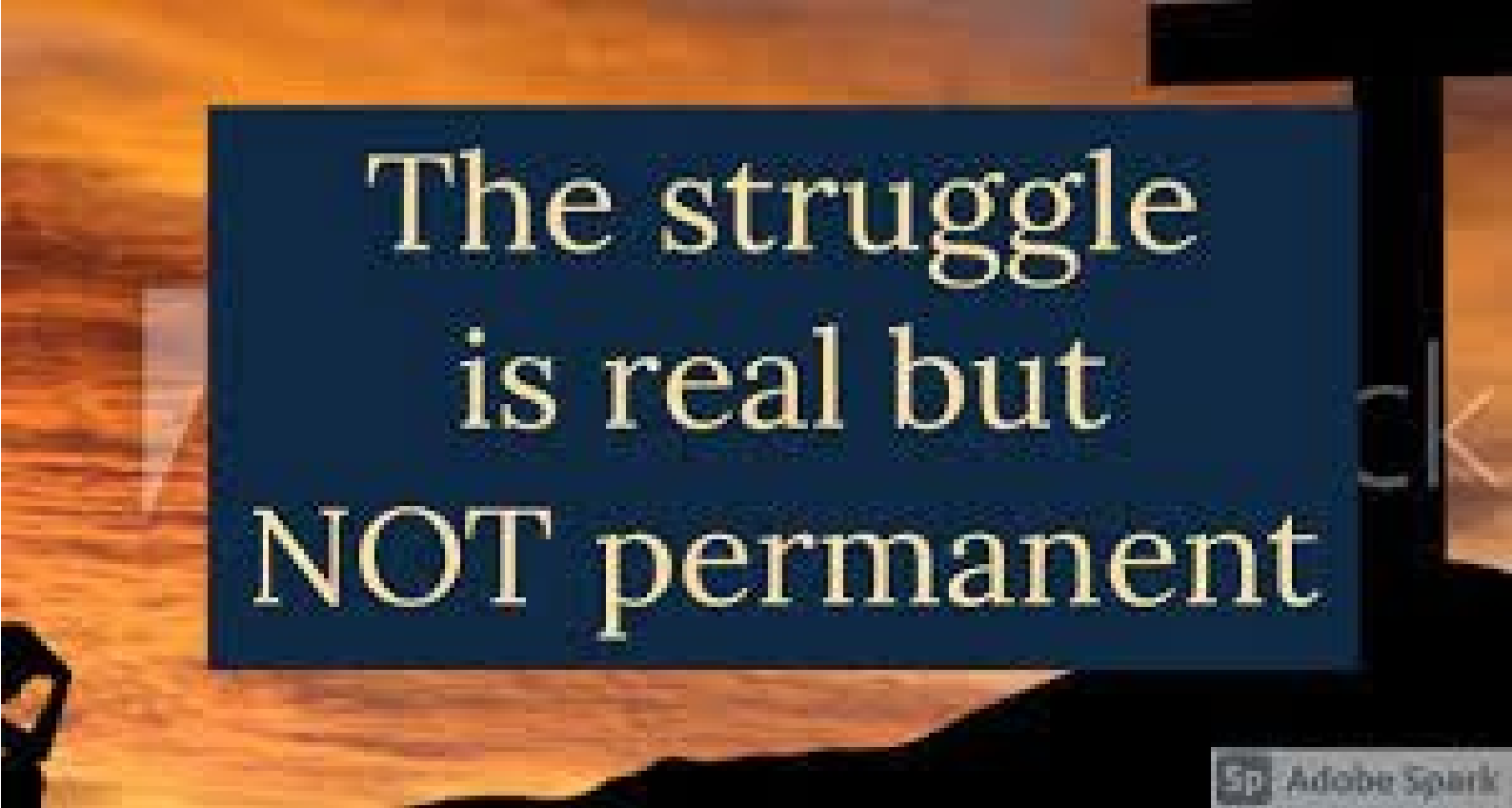


- Every patient PHQ-9 & GAD-7- scored by provider
- MSW in our practice – past 17 years
- Resources for housing, insurance, mental health, gender affirming care
- Assist with mental health crisis
- Past 5 years, has a small panel of patients, bills
- Several primary office, MSW- Behavioral Health Specialist
- Integrated them into teaching of learners- shadowing, didactics

The Struggle Continues

- Lack of resources especially with CHM
- Private insurance issues
- Kent School Services Network (KSSN)- 9 districts in 45 school in Kent County
- Collaboration – schools, how can we partner and not work in silos
- Time...Time.. Time





The struggle
is real but
NOT permanent

Reach out to colleagues - Things that I have done

- Partnered with psychiatry and psychology colleagues for case management – met monthly to discuss cases
- I reached out to psychiatry residency and fellowships
- Psychiatry residents as learns
 - See patients and I get access to psychiatry residents and fellows
- Are they providers in your community to collaborate with?

Pine Rest to Build \$62 Million Pediatric Behavioral Health Center of Excellence, in collaboration with Helen DeVos Children's Hospital



- Build a Pediatric Behavioral Health Center of Excellence on Pine Rest's 220-acre campus in southeast Grand Rapids.
- Plan to raise \$60 million from public and private donors by 2023 to start construction by the end of next year. \$38 million awarded through the bipartisan supported 2023 state budget
- Psychiatric inpatient bed expansion from 36 to 88
- Creation of a pediatric psychiatric urgent care center
- New intensive psychiatric residential treatment facility for autistic spectrum disorder and developmentally disabled children.
- An eating disorders treatment facility.
- Expanded outpatient services



MC3 provides...

- **Same-day psychiatry phone consultation assisting primary care providers with differential diagnosis and treatment recommendations**
- **Target population**
 - Children, adolescents and young adults ages 0-26
 - Perinatal women, up to 12 months postpartum
- **Psychotherapy and community resources provided by regional Behavioral Health Consultants (BHCs)**

How does MC3 work



**Provider/clinic staff
initiates consultation**



**Behavioral Health Consultant
triages consult request and
provides resources**



**Psychiatrist and
provider connect**



**Consult summary
sent to provider**

**Now Available:
Online Consult Request Form**



Additional Key MC3 Offerings



Telepsychiatry
patient
evaluations



Live and remote trainings
offered regionally and
statewide



Workflow analysis to better
integrate screening, care
coordination, and MC3 services



Local and regional
behavioral health resource
and referral navigation



Scheduled educational
group case consultation
with MC3 psychiatrist



Michigan's Psychiatry Access Program

- UM launched in 2012 in collaboration with key stakeholders to address shortage of pediatric and perinatal psychiatrists
 - MDHHS
 - CMH Leadership
 - Primary Care Providers
- Funding
 - Private foundation initially initially (2012-13)
 - Michigan Department of Health and Human Services (MDHHS)
 - General funds, Medicaid Administration funds, Flint Water Crisis funds, and Mental Health Block Grant
 - HRSA Pediatric Mental Health Care Access funding (5th of 5-year grant) for statewide expansion
- MSU partnership
 - Provider education
 - Psychiatry consultation





Contact Us

- Website: mc3michigan.org
- Email: mc3-admin@med.umich.edu



