

Transforming behavioral health care in Michigan

Spring 2024 Michigan Health Policy Forum
May 20, 2024

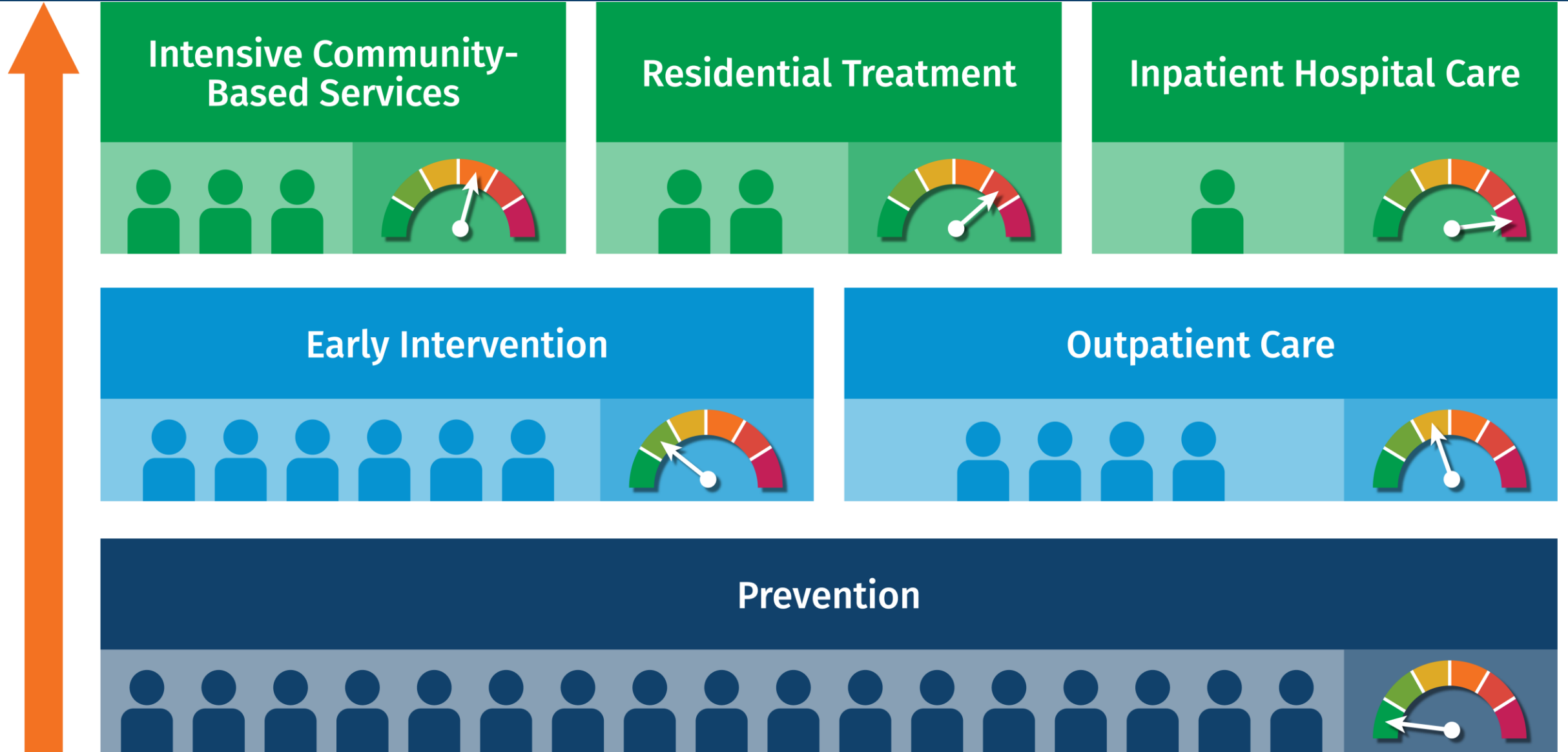
Elizabeth Hertel, Director



Mission

MDHHS provides services and administers programs to improve the health, safety, and prosperity of the residents of the state of Michigan.

Michigan's Behavioral Health Continuum



Behavioral Health Investments

A closer look

Certified Community Behavioral Health Clinics (CCBHC)

Background Information

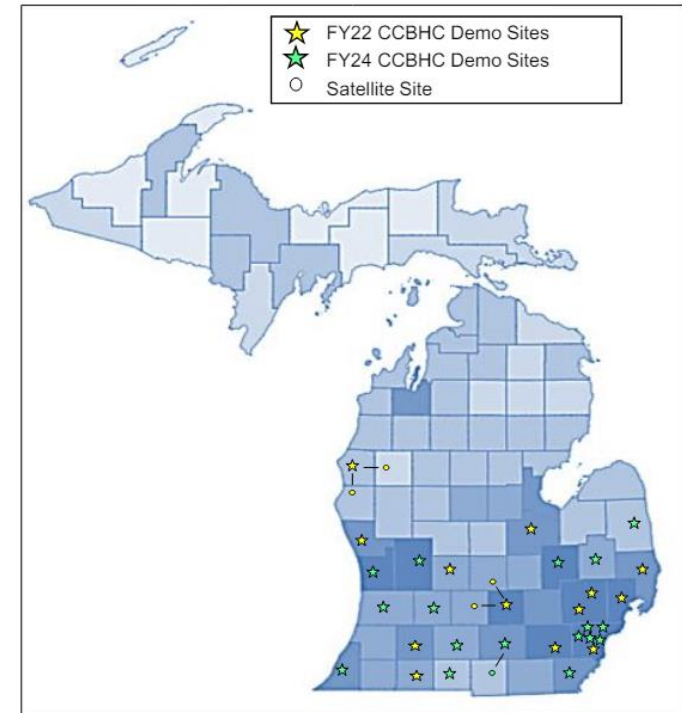
CCBHCs are designed to provide a broad array of mental health and substance use disorder services to persons of all ages, regardless of ability to pay. There are currently 30 CCBHCs in Michigan's Medicaid demonstration.

Demonstration Outcomes

- Increased access to care, a decrease in the number of people experiencing homelessness, a decrease in time spent in correctional facilities, and fewer emergency room visits for behavioral health.
- In 2023, approximately 75,000 individuals received services through one of Michigan's then 13 CCBHCs.
- 82% of Michiganders now live in a county with a 24/7 mobile crisis response.

Future Plans and Recommended FY 2025 Investments

Expansion of CCBHC sites, providing access to behavioral health supports and services for up to 50,000 additional Michigan residents.



Strengthening the Behavioral Health Care Workforce



Background Information

A key aspect of increasing access to behavioral health services is supporting the workforce providing those services. Health care workforce shortages remain one of the leading challenges for health systems and organizations across the state. Burnout, low wages, and turnover are part of the challenges.

Ongoing Initiatives

Student loan repayment program.

Partnerships to increase students in the psychiatric mental health nurse practitioner programs.

Behavioral health internship stipends.

Behavioral health workforce capacity building center.

FY 2025 Recommended Investments

Nursing student loan repayment program.

Aligning Medicaid reimbursement rates for outpatient behavioral health services.

Grants for continuing education and examination fees.

Funding for scholarships and internships.

Children's Behavioral Health Care



Child and Adolescent Health Centers

- Child and Adolescent Health Centers are a safe and caring place for children and adolescents to learn positive health behaviors, prevent diseases, and receive needed medical care and support.
- More than 270 sites across Michigan, many of which are partnerships between health systems, local health departments, and intermediate or local school districts.
- Continues to expand through planning grants in FY 2023, FY 2024 and recommended FY 2025 budgets.

Michigan Child and Adolescent Needs and Strengths (MichiCANS)

- Implementing a statewide standardized behavioral health assessment process and tool for children entering child welfare or mental health systems.
- The tool was soft-launched in January and will be used in the intake processes at all Community Mental Health Service Providers and Prepaid Inpatient Health Plans in Michigan beginning October 1.

Additional Investments

- Expanding mobile response units.
- Support for the Pine Rest pediatric behavioral health center.

Crisis Stabilization Units

Background Information

Michigan Public Act 402 of 2020 created crisis stabilization units to provide an alternative to emergency department and psychiatric inpatient admission for people who can be stabilized through treatment and recovery coaching within 72 hours.

Ongoing Initiatives

- Working with partners across the state to establish units.
- Recent openings of crisis stabilization units include:
 - Network180, Kent County.
 - Detroit Wayne Integrated Health Network, Wayne County.

Psychiatric Residential Treatment Facilities



Background Information

Psychiatric Residential Treatment Facilities, or PRTFs, is a new model being implemented in Michigan. They offer an environment where youth can transition, or step-down, to community care after inpatient care.

Implementation Outcomes

- Since June of 2023, 36 youth have been served through PRTF, with 18 of those youth successfully discharged into the community.
- We are already seeing the value and importance of this level of care:
 - Discharge from treatment;
 - Setting and reaching educational goals; and,
 - Meeting clinical treatment goals.

Future Plans and Recommended FY 2025 Investments

- Onboarding and additional provider and expanding existing capacity.
- Conversations with potential providers, ranging from hospital systems to residential providers to providers that specialize in specific treatment modalities.

Additional Areas of Investment and Ongoing Work



Behavioral health homes

- Expanding to new counties.

Michigan Crisis and Action Line (MiCAL)

- Michigan's 24/7 statewide crisis, support, information, and referral line.
- The FY25 budget proposes additional funding for sustainable financial support of MiCAL.

State inpatient hospitals

- Completion of Caro Psychiatric Hospital in June 2023.
- Construction is underway for a new inpatient psychiatric hospital that would care for patients currently served at the former Hawthorn Center and Walter P. Reuther Psychiatric Hospital in Westland.
- Increasing bed counts at the Center for Forensic Psychiatry in Kalamazoo.

Looking Ahead

Questions?