



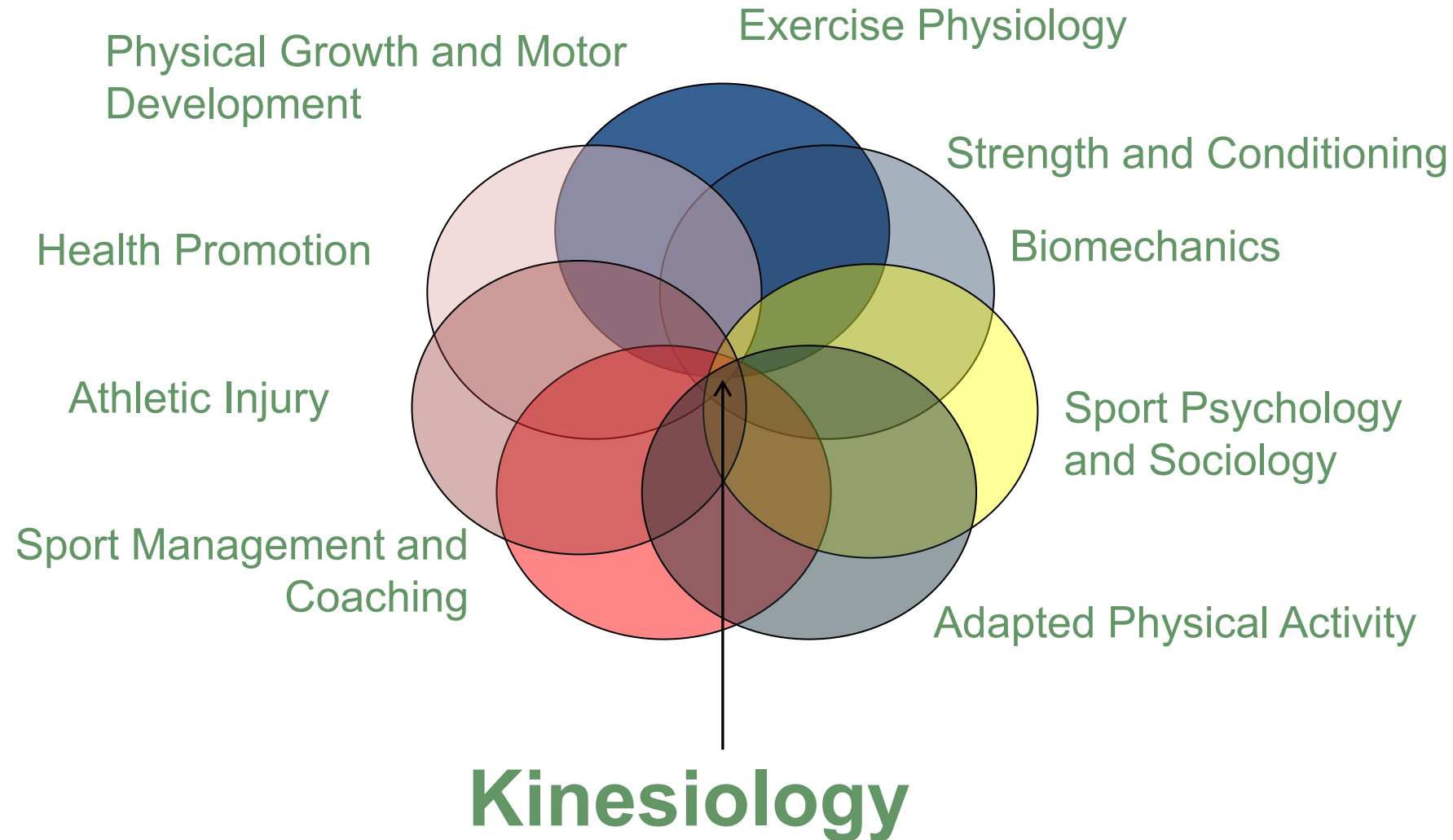
Welcome to our Kinesiology Break-Out Session!



Latisha Hurd, Assistant Director Student
Affairs Office - Kinesiology



The Study of Human Movement





B.S. in KINESIOLOGY & ADVANCED DEGREES

☐ **Fitness/Wellness/Rehabilitation**

Certified Personal Trainer
Community Health Educator
Exercise Physiology/Cardiac Rehabilitation Specialist
Health Club/Fitness Manager
Strength & Conditioning Coach
Wellness Coordinator

☐ **Business**

Insurance Underwriter
Medical//Pharmaceutical Representative
Sports Event Coordinator
Technical/Health Care Recruiter

☐ **Government/Nonprofit**

Behavioral Health Technician
Case Manager
Community Coordinator

☐ **Patient Care***

Diagnostic Medical Sonographer
Occupational Therapy Assistant
Physical Therapy Assistant
Respiratory Therapist

☐ **Health Professional**

(highly competitive, science curriculum)

Athletic Training
Chiropractic Medicine
Nursing (BS)
Medical School
Occupational Therapy
Orthotics & Prosthetics
Physical Therapy
Physician Assistant
Speech/Language Pathology

☐ **Master's Degree**

Applied Behavioral Analysis
Dietetics/Nutrition
Exercise Physiology/Kinesiology (Research)
Health Administration
Health Risk Communication
Public Health
Rehabilitation Counseling
Sport Management

**with post-graduate certificate in accredited program*

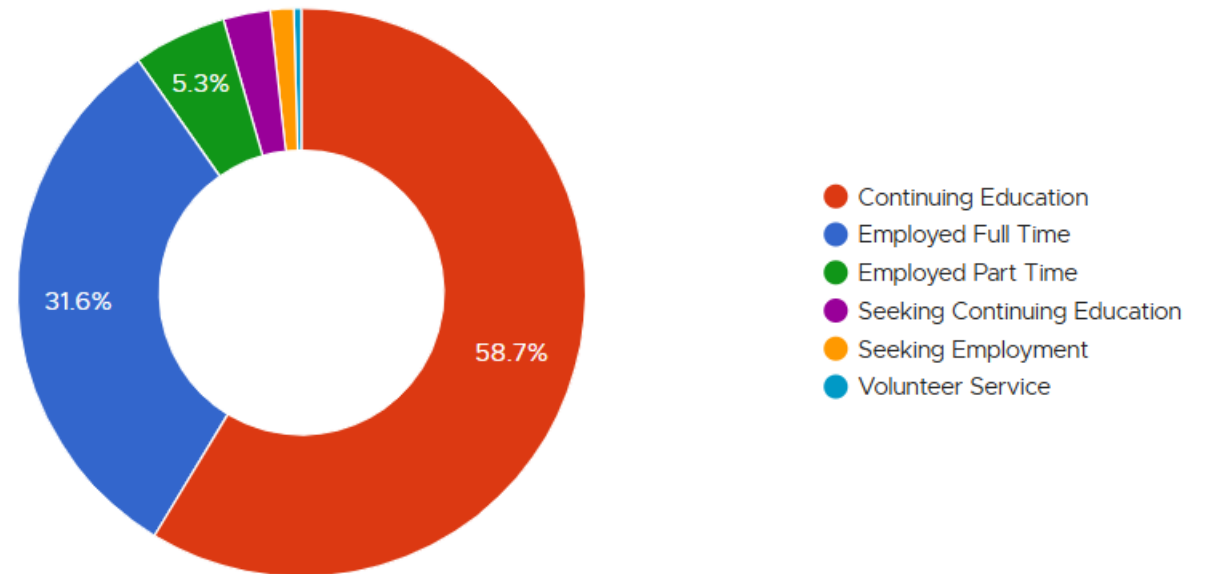


Class of 2024: Where are they now?

First Destination

Post-graduation outcomes of bachelor's degree recipients.

Statistics are gathered within 6 months of graduation, per reporting standards.

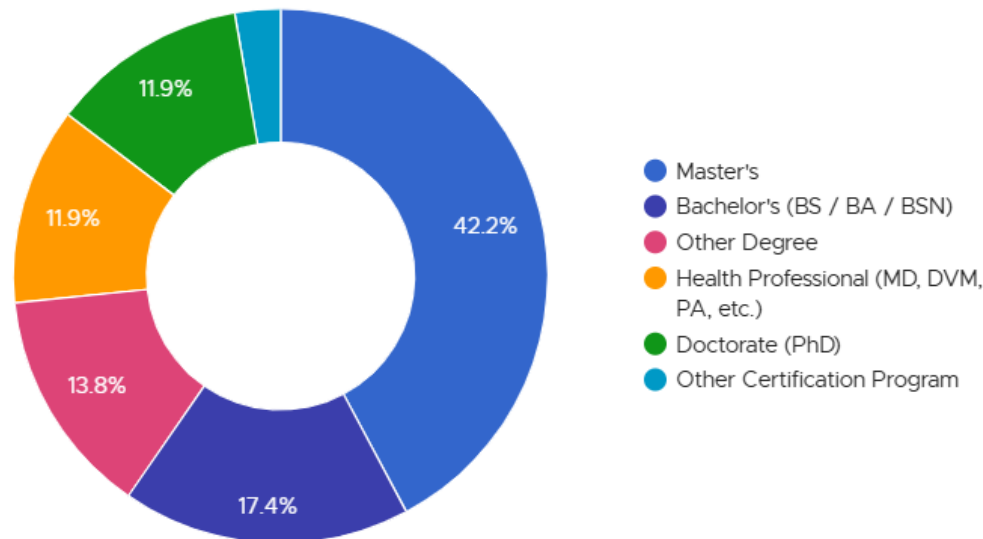




Class of 2024: What are they up to?

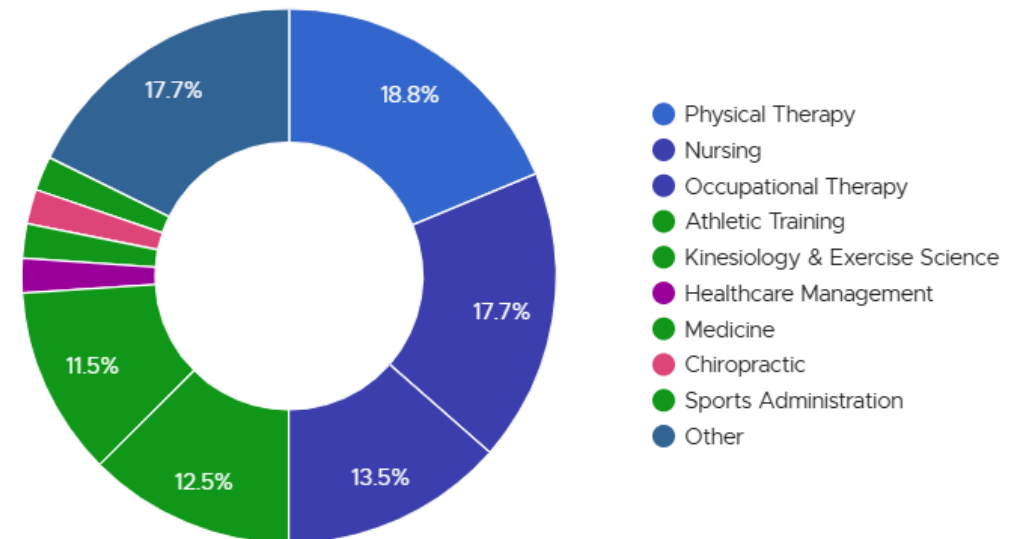
Degree Types

After graduation, many Spartans choose to further their education in a range of degree opportunities — from certificate to doctorate.



Fields of Study

MSU's breadth of areas of study prepare graduates to further their education and make an impact in diverse fields.



[https://careernetwork.msu.edu/outcomes/#!Kinesiology%20\(CED\)](https://careernetwork.msu.edu/outcomes/#!Kinesiology%20(CED))



Foundational Courses:

Math/Science Core



All KIN students must complete these courses with a 2.0 or higher

KIN 210 – Principles of Exercise Physiology (3)

KIN 216 – Applied Human Anatomy (3)

KIN 220 – Principles of Sports Medicine (3)

KIN 240 – Principles of Biobehavioral Health (3)

KIN 251 – Principles of Human Movement (4)

MTH 103 – College Algebra (3)

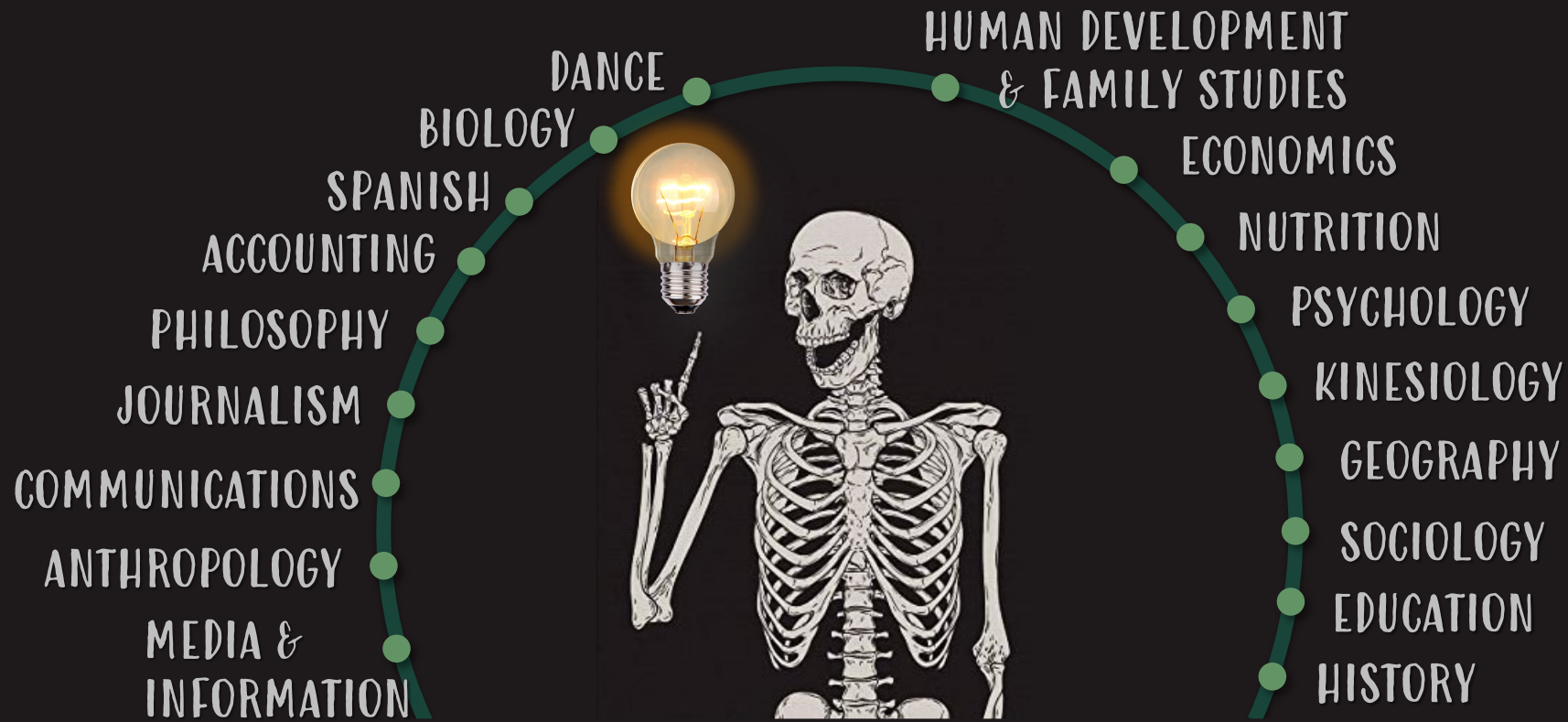
CEM 141 – General Chemistry I (4)

PSL 250 – Introductory Physiology (4)



Elective Ideas for Kinesiology Majors

Elective courses at MSU allow students to customize the degree according to career interests or grad school plans.





Hands-On Experiences and Opportunities Can Help in Choosing Your Path!



Service Learning/Volunteer Hours

Job Shadowing/Networking

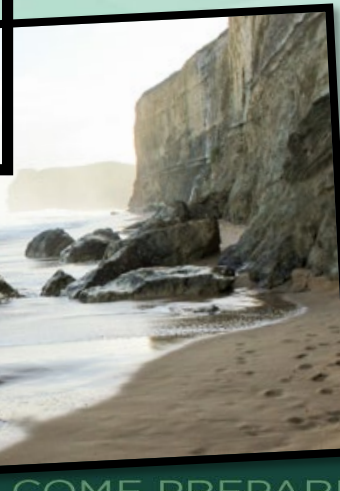
Student Organizations

Education Abroad

Internships

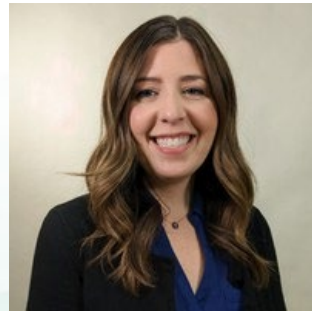
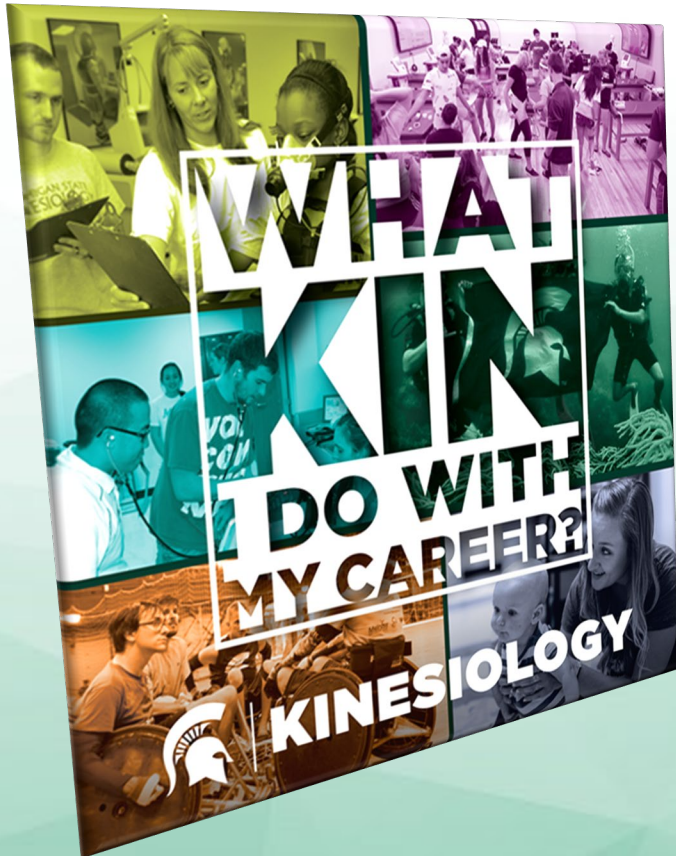
Field Work

Research





Getting it Right from the Start



Kathy Dietzel – Career Advisor

**“Making KIN-nections”:
Every Fall semester**

- What is Career Services’ role at MSU?
- How can Career Services help you in your Spartan journey?

Top Employers

Spartans begin their careers in government, healthcare, corporations and more.

This list of employers below shows organizations first in the order of those that hired the most graduates, then is represented in alphabetical order.

- | | |
|---|--------------------------------------|
| 1. Michigan State University | 11. Arthrex Grand Rapids |
| 2. Team Rehabilitation Physical Therapy | 12. AstroTurf Great Lakes |
| 3. Corewell Health | 13. ATI Physical Therapy |
| 4. Medtronic | 14. Barwis |
| 5. Stryker | 15. Becon of Hope Hospice |
| 6. Absolute Medical Inc. | 16. Blossom Children's Center |
| 7. ALIVE | 17. Chevrolet |
| 8. APEX Biologix | 18. Concentra Urgent Care |
| 9. Armor Physical Therapy | 19. Convatec |
| 10. Arthrex | 20. Dr. Gregory E. Gould, D.O., P.C. |



Helpful tips:

- Kinesiology is packed with science and math. Be sure you enjoy those subject areas. It is more than sports
- Get experience. Volunteer in your community, look for jobs/job shadowing opportunities in the areas that are of interest to you. Build your network!
- Utilize the MSU Transfer Equivalency website (transfer.msu.edu) is a useful tool in transferring in courses.
- Research Kinesiology careers.
- Check out the MSU Kinesiology website!



Any questions?

My contact information: Latisha Hurd
hurdlati@msu.edu

