

SPARTAN REHAB NEWS

A NEWSLETTER FROM THE OFFICE OF REHABILITATION AND DISABILITY STUDIES (ORDS) AT MICHIGAN STATE UNIVERSITY DESIGNED TO BUILD BRIDGES BETWEEN PRACTITIONERS, RESEARCHERS, & EDUCATORS.



RECENT EVENTS

CONGRATULATIONS
& CELEBRATIONS

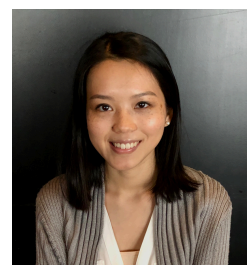
ONGOING RESEARCH
PROJECTS

ALUMNI
SPOTLIGHTS

UPCOMING EVENTS
& ANNOUNCEMENTS

Farewell to Drs. Beatrice Lee and Emre Umucu

Please join us in wishing Drs. Beatrice Lee and Emre Umucu the best and greatest success in their future endeavors. They served as an assistant professor in the Office of Rehabilitation and Disability Studies at MSU since they joined us in 2021. During their time at MSU, Drs. Umucu and Lee taught master's and doctoral level courses, advised students in both programs, led Spartan Writing Club, initiated new programs and grants, collaborated with community organizations, students and other faculty members at MSU, and expanded their research areas. It has been an honor and pleasure to have Drs. Uumcu and Lee with us. We are truly grateful for your dedication and contributions to our programs. Thank you, Drs. Beatrice Lee and Emre Umucu. We hope to continue to collaborate with you in the future.



SPARTAN REHAB NEWS EDITORIAL BOARD

Hung Jen Kuo, Emre Umucu - Faculty Advisor
Heerak Choi- Editor, Writer

CONTRIBUTORS:

Priscilla A. Davies
Amy De Maagd
Trisha Easley
Kristin Houck
Hung Jen Kuo

Gloria Lee
Alicia Strain
Connie Sung
Emre Umucu
Asmau Ayub Yusuf

If you are interested in contributing to Spartan Rehab News,
please contact Dr. Hung Jen Kuo at kuohungj@msu.edu.

Follow us:



Rehabilitation Counseling,
Michigan State University



Recent Events

48TH ANNUAL PECKHAM-SMITH GOLF TOURNAMENT

We successfully hosted the 48th annual Peckham-Smith Golf tournament. It was held on September 30th, 2022 at Forest Akers West. We had over 40 golfers and many community partners attended. We had a fantastic turnout from our master's and doctoral students who volunteered and helped out at the event. We are so grateful to our sponsors and everyone who attended. We hope to see you again next year!



Some pictures taken at the tournament.
More pictures at our Facebook Page.



Huge Thanks to Our Sponsors!

CBI Rehabilitation Services, Inc.
Hostetler-Fontaine & Associates
Incompass Michigan
Michigan Rehabilitation Association
MSU Rehabilitation Counseling
PAR Rehab Services
Peckham Inc.

2022 FALL RE:CON CONFERENCE

The 2022 Re: Con State Conference was held from October 31st to November 2nd at the Grand Traverse Resort and Spa. We had 4 presentations by the MA students, Mudita Jagota, Michael Laird, and Milan Monardes and the faculty, Drs. Hung Jen Kuo, Beatrice Lee, and Connie Sung. The MSU Rehabilitation Counseling (RC) Program had a good representation. We also had a social hour gathering with many MSU students, faculty, alumni, and community partners were invited. It was a great opportunity to build a connection with practitioners, employers, and community partners.



2022 FRIENDSGIVING POTLUCK EVENT

The Friendsgiving Potluck event was initiated and organized by the RC graduate students who wished to share the spirit of Thanksgiving. We had a great turnout from our graduate students and faculty. We enjoyed a table filled with love, hope, gratitude, and amazing food. We hope to see everyone at the next potluck event.



WELCOMING NEW GRADUATE STUDENTS

We accepted two new doctoral and five master students during the academic year of 2022-2023. Please join us in congratulating them on successfully finishing their first year!

Doctoral students: Asmau Ayub Yusuf, Priscilla A. Davies

Master students: Terrie O'Connor, Nova Harahap, Yu-Tien Hsieh, Maddie Kuhn, Ruifen Tan

ONGOING CACREP ACCREDITATION

In February 2022, our program received notification from CACREP that both our master and doctoral programs received a 2-year accreditation through March 2024. An interim report will be submitted to the CACREP Board to address a minor task on the formal documentation of on-site counseling sessions in practicum. We will expect our accreditation to be extended to March 2030 after the evaluation of the interim report. Thank you, Dr. Andy Nay for leading the program faculty on the self-study and site visit.

NEW PROGRAMMING

The Rehabilitation Counselor Education doctoral program (74 credits) is revised to be a Counselor Education and Supervision doctoral program (66 credits), with a disability specialization as an option. This revised program will be launched in Fall 2023. We are also planning to start a Clinical Mental Health Counseling program in Fall 2024.



CONGRATULATIONS & CELEBRATIONS

PHD GRADUATES OF CLASS 2023



Congratulations to all of our doctoral and master's graduates of class 2023! We are proud of you and your accomplishments. We wish you all the best for a bright future ahead of you!



Dr. Dani Ayeh



Dr. Amy De Maagd



Dr. Trisha Easley



Dr. Alicia Strain



MA GRADUATES OF CLASS 2023



Zeynep Aydin



Andrew Harsh



Yusi Hu



Mudita Jagota



Kaily Kraft



Milan Monardes



Abbey Moran



Rhiannon Serrurier



Ken Tribley

STRATEGIC PARTNERSHIP GRANT

In collaboration with the Lansing-based nonprofit Peckham Inc. and the national nonprofit network SourceAmerica, a team of MSU faculty from the Colleges of Business, Engineering, and Education has been awarded a \$400,000



Strategic Partnership Grant to develop innovative strategies to promote the employment of people with disabilities. Dr. Hung Jen Kuo, assistant professor in our RC program serving as a co-principal investigator of the project said "Traditionally, disability employment disparity issues were handled by a single proposed solution or approach and lack a holistic view from the individual, the technology, and the organization and the society perspectives." He also added, "This project will be the first of its kind that a true interdisciplinary collaboration can be formed with a focus on improving the lives of individuals with disabilities." Dr. Sriram Narayanan, professor of Supply Chain Management and faculty lead for the grant, emphasized the benefits of inclusion of people with disabilities by saying, "Inclusion of people with disabilities is critically important for individuals because it results in greater independence, quality of life and well-being." The project is expected to make a huge impact on business and society by utilizing the yet-untapped workforce of individuals with disabilities and showing the contribution those with disabilities would make. See the press release for more information

(<https://tinyurl.com/2022strategicpartnership>).

STRIDE CENTER GRAND OPENING

The MSU STRIDE center (Services, Training, and Research for Independence and Desired Employment) opened its door in the fall 2022. This center was established by Drs. Connie Sung and Marisa Fisher,



full/associate professor in the RC and Special Education Programs, respectively. The center aims to support and train underserved individuals with disabilities (e.g., physical, mental, neurological, intellectual, and developmental disabilities, incarcerated populations with disabilities, and veterans with disabilities), their families, and other community stakeholders by (a) providing resources and training for employment and community independence; (b) training future professionals and service providers through internship and practicum placements; (c) conducting research to improve outcomes and services; (d) engaging with communities to promote knowledge transition from research to practice. The following programs and services will be provided to those with disabilities and community stakeholders: ASSET (Assistive Soft Skills and Employment Training), EPASS (Employment Training and the Employment Preparation & Skills Support), Community Safety and Navigation Training, Disability Awareness Training, and MI Employment Clinic. Dr. Cary Roseth, chair of the CEPSE department said, "Building on the success of Spartan Project SEARCH and the amazing leadership of Drs. Fisher and Sung, STRIDE will advance MSU's teaching, research, and outreach missions for years to come." Check out the website for more information (<https://stride.msu.edu/>).

STRIDE

The logo graphic for STRIDE, featuring three stylized arrows pointing to the right. The top arrow is green, the middle one is red, and the bottom one is blue. They are all pointing towards the right side of the word STRIDE.

PROJECT FUTURE

Project Focus on the Underserved in Transition Using Rehabilitation and Education (FUTURE) is a collaboration between Michigan State University and Penn State University, funded by the Office of Special Education Programs (OSEP), to prepare interdisciplinary doctoral Scholars to be leaders in transition research and pre-service preparation to improve post-school outcomes for students with intellectual and developmental disabilities (IDD) from underserved communities- that is populations sharing a particular characteristic, as well as geographic communities, that have been systematically denied a full opportunity to participate in aspects of economic, social, and civic life, such as Black, Indigenous, and People of Color (BIPOC); lesbian, gay, bisexual, transgender, and queer (LGBTQ+) persons; persons with disabilities; persons who live in rural areas; members of religious minorities; and persons otherwise adversely affected by persistent poverty or inequality.

Drs. Marisa Fisher and Emily Bouck in Special Education program as well as Drs. Beatrice Lee and Connie Sung in Rehabilitation Counseling program at will serve as Project FUTURE faculty and lead the FUTURE scholars at MSU. FUTURE scholars will be prepared to gain expertise in four competency areas:

- (a) culturally responsive and sustaining evidence-based practices;
- (b) community-based participatory research;
- (c) interagency and family collaboration;
- (d) disability policy and advocacy.

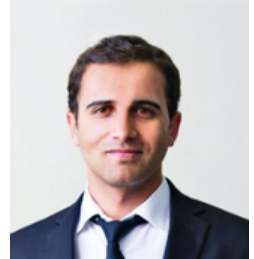
We look forward to meeting FUTURE scholars in Fall 2023! For more information, please see website at <https://www.projectfuturephd.com/>. For any questions, please email ProjectFUTURE@msu.edu.

VETERAN RESEARCH AND INITIATIVES

Michigan State University is recognized as a veteran-friendly school by the Michigan Veterans Affairs Agency for seven consecutive years. Part of the efforts in keeping MSU's veteran-friendly environment has been actively implemented by our RC Program.

Specifically, Drs. Gloria Lee and Emre Umucu have been collaborating with the VA

Battle Creek Medical Center to capture a more comprehensive way to identify and track the needs of caregivers of aging Veterans in their Respite program. While observing Veteran's Day on November 11th, 2022, our RC program delivered our sincere gratitude to veterans for their service and sacrifices.



FITI RESEARCH PROGRAM

Drs. Gloria Lee, Hung Jen Kuo, and their research lab members developed and successfully implemented two cycles of Family and Individuals Transition Intervention (FITI), a life transition psychoeducation program. FITI is a 10-week group session that aims at providing knowledge and support for families of young adults on the autism spectrum (ages 16-26) on life transition topics. They received funding support from MSU's Give Green Day in March 2022 and plan to use it to give back to the community by supporting families and emerging adults with neurodevelopmental disabilities.



BUILDING DIGITAL PLATFORM FOR THE SOFT SKILL TRAINING PROGRAM

In collaboration with MSU Technology and Cogrounded, Drs. Connie Sung and Hung Jen Kuo were awarded \$100,000 to design, build, test, and scale a comprehensive digital platform that can streamline the delivery of an evidence-based Assistive Soft Skills and Employment Training (ASSET) curriculum that was developed to improve workplace soft skills of transition-aged students with intellectual/developmental disabilities. Cogrounded and MSU will design, build, test, and scale a digital platform for commercialization that includes the necessary components to deliver ASSET in virtual or in-person classrooms. For more detail, please check: <https://youtu.be/eGIBZfTCPjU>

PRESENTATION AND PUBLICATION

Our students and faculty have been actively presenting and publishing their work during this academic year 2022-2023. We had over 10 presentations at Re: Con, American Psychological Association-Division 22, and Michigan Transition Services Association, and will have more presentations at upcoming conferences including the American Association on Intellectual and Developmental Disabilities by the faculty and students.

100% PASS ON PRELIMINARY AND COMPREHENSIVE EXAM

All students passed on the preliminary exam and comprehensive exam in 2022 and smoothly transitioned to the next step of the program.

Ongoing Research Projects

PARENT TRAINING ON INTERPERSONAL EFFECTIVENESS SKILLS FOR ADOLESCENTS WITH ASD

Our doctoral graduate, Trisha Easley is wrapping up her dissertation on the development and evaluation of the feasibility of newly developed parent training program for parents with adolescents with autism. The program, Relationship & Interpersonal Skills Training for Adolescents (RISTA) is based on Dialectal Behavior Therapy Skills Manual for Adolescents (Rathus & Miller, 2015). RISTA includes an online self-learning, an in-person training with mock-up practice, and two home observations to evaluate implementation. This study will contribute to understanding the application of training parents to deliver the program, as well as the additional benefits in adolescents' interpersonal skills, improved parent-child relationships, and reduced parental stress.

A PORTRAIT OF THE COUNSELOR AS A YOUNG CAREGIVER OF ADULTS WITH DISABILITIES

Our doctoral candidate, Kristin Houck, is working on her dissertation about how vocal entanglement between individuals with intellectual and developmental disabilities (I/DD) and caregivers impacts the care needs and overall well-being of the family caregiver. As a family caregiver of an adult with I/DD with complex communication needs, and as a counselor working alongside family caregivers of adults with I/DD, her identity and lived experience will provide valuable insight to understanding this entanglement. She is using autoethnography, a qualitative methodology that centers critical, cultural analysis and interpretation through storytelling, to investigate these experiences.

Alumni Spotlights

Dr. Alicia Strain graduated from MSU Rehabilitation Counselor Education doctoral program in May 2023. Her dissertation focused on the development, feasibility,



social validity, and preliminary reliability of a new soft skills assessment for transition-age individuals with autism, titled Employment Success: Soft Skills (ESSS). She is currently the ASSET-EPASS Program Manager in the Department of Counseling, Educational Psychology & Special Education at MSU. ASSET and EPASS are manualized soft skills and employment readiness training programs for individuals living with disability. She is involved in several research and community-based projects where she oversees the implementation of ASSET and EPASS programming. She also leads REDCap database development and management for Project STEMM-Up.

Dr. Amy De Maagd graduated from the MSU Rehabilitation Counselor Education doctoral program in Spring 2023. She pursued her doctoral studies since 2018 while working full-time as an occupational hand therapist. Her dissertation focused on the development and implementation of a telehealth pain neuroeducation program. This psychoeducation intervention aims to reduce pain for individuals with distal upper extremity injuries. Dr. De Maagd incorporated the counseling and therapeutic alliance aspects of her doctoral training into her profession as a hand therapist. The results were promising, highlighting the psychological impact of pain. She aims to use this intervention together with the functional activity mirror intervention that she and her colleagues patented to improve functions of people with neurological disorders. Additionally, she will begin the Lee Silverman's Voice Training and certification this summer to assist those with Parkinson's Disease and other neurological conditions to improve their motor function.

Upcoming Events

STRIDE CENTER - SUMMER TRAINING SIGN-UP

The MSU STRIDE center is recruiting participants for the ASSET (Assistive Soft Skills and Employment Training), EPASS (Employment Preparation And Skills Support), and community safety and navigation training this summer, 2023. If you would like to refer anyone with disability who may be a good fit for the program, please contact the STRIDE Center at STRIDE@msu.edu.

STRIDE Program	Time	Date	Place
ASSET Group1	9am-12pm	June 12th - June 30th	STRIDE Center (2875 Eyde Pkwy, East Lansing, MI 48823)
ASSET Group2	1pm-4pm	July 10th - July 28th	
EPASS	9am-12pm	July 10th - July 28th	
Community safety and navigation training	Individually customized	Individually customized	

2023 A.O.F.O.W. CONFERENCE

A.O.F.O.W conference (Abilities, Opportunities and the Future Work) will be held on August 17th and 18th at Minscokoff Pavilion, Michigan State University. The conference aims to bring to the table multiple disciplinary groups of employers, academics, practitioners, nonprofit organizations, policymakers, and individual stakeholders that can bring actionable solutions for enhancing opportunities for disability employment. If you are interested, please contact the conference planning committee members, Dr. Hung Jen Kuo at kuohungj@msu.edu or Dr. Connie Sung at csung@msu.edu.