

MICHIGAN STATE  
UNIVERSITY

January 18, 2012

**MEMORANDUM**

**To:** Trustee Finance Committee

**From:** Fred L. Poston 

**Subject:** **Project Approval - Authorization to Proceed**  
Poultry Laying Hen Facility

**RECOMMENDATION**

BE IT RESOLVED that the Trustee Finance Committee recommends to the Board of Trustees that it authorize the administration to proceed with the project entitled Poultry Laying Hen Facility and that it approves a budget of \$1,475,000.

**BACKGROUND**

**Program Need:**

Legislation influencing animal housing has become increasingly prevalent. Continued scrutiny of poultry production and a push to regulate it are evidenced by legislation being passed in California in 2008 and a ballot initiative in Ohio in 2010. Michigan was affected in 2009 with the passage of Michigan legislation (PA 117) that phases out the use of conventional cages used in laying hen production during the next ten years. Research is essential to determine the most efficacious type of housing that will be used to replace laying hen housing in Michigan, which is projected to require an investment of \$50 to \$200 million during the ten-year phase-out. The transition requires additional research followed by outreach programs to disseminate the findings. The research requires a new specially-designed facility.

**Description of the Project:**

This project will include the construction of a post-frame facility to house a minimum of approximately 6,000 laying hens in three different housing systems at the Poultry Teaching and Research Center which is located on Jolly Road east of College Road in the Agricultural District. The housing facility will have 12 individual rooms (500 hens per room) with four rooms containing conventional housing, four rooms of enriched housing, and four rooms of an aviary system.



OFFICE OF THE  
VICE PRESIDENT FOR  
FINANCE AND  
OPERATIONS

Fred L. Poston  
Vice President and  
Treasurer

Michigan State University  
412 Administration Building  
East Lansing, Michigan  
48824-1046

Phone 517.355.5014  
Fax 517.353.6772  
www.vpfo.msu.edu

Based on an assessment of the factors stated in the Project Planning and Approval process concerning Project Labor Agreements (PLA), the Vice President for Finance and Operations and Treasurer has determined that a PLA would not be required for this project.

**Communication Feedback:**

The campus community was given opportunities to provide feedback during the planning phase; concerns have been addressed in the project design.

**Project Cost and Timetable:**

The budget for this Design-Build project is \$1,475,000 which is being funded by industry partners and Animal Industry Initiative Funds.

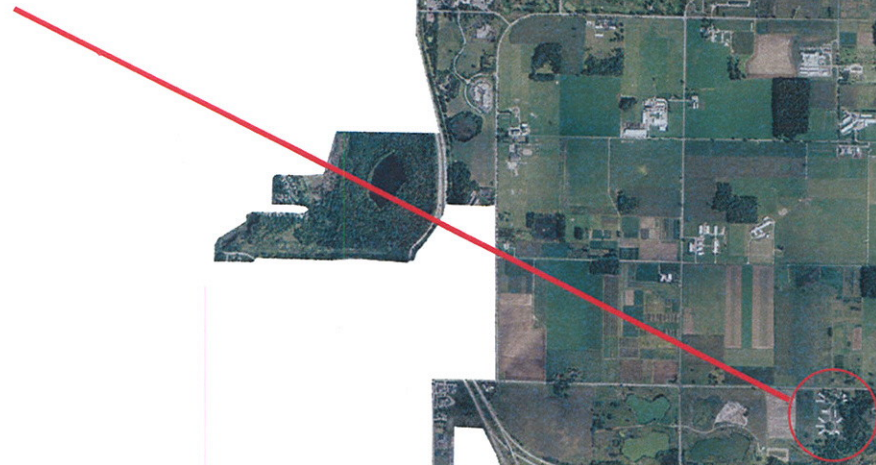
Construction is planned to begin April 2012, with substantial completion in June 2012, and final completion by July 2012.

cc: R. Flinn, M. Haas, J. Kacos, G. Klein, B. Kranz, B. Latta, K. Lindahl,  
M. McCabe, J. Mumma, R. Nestle, D. Quinney, C. Reid, B. Groves

CP10900

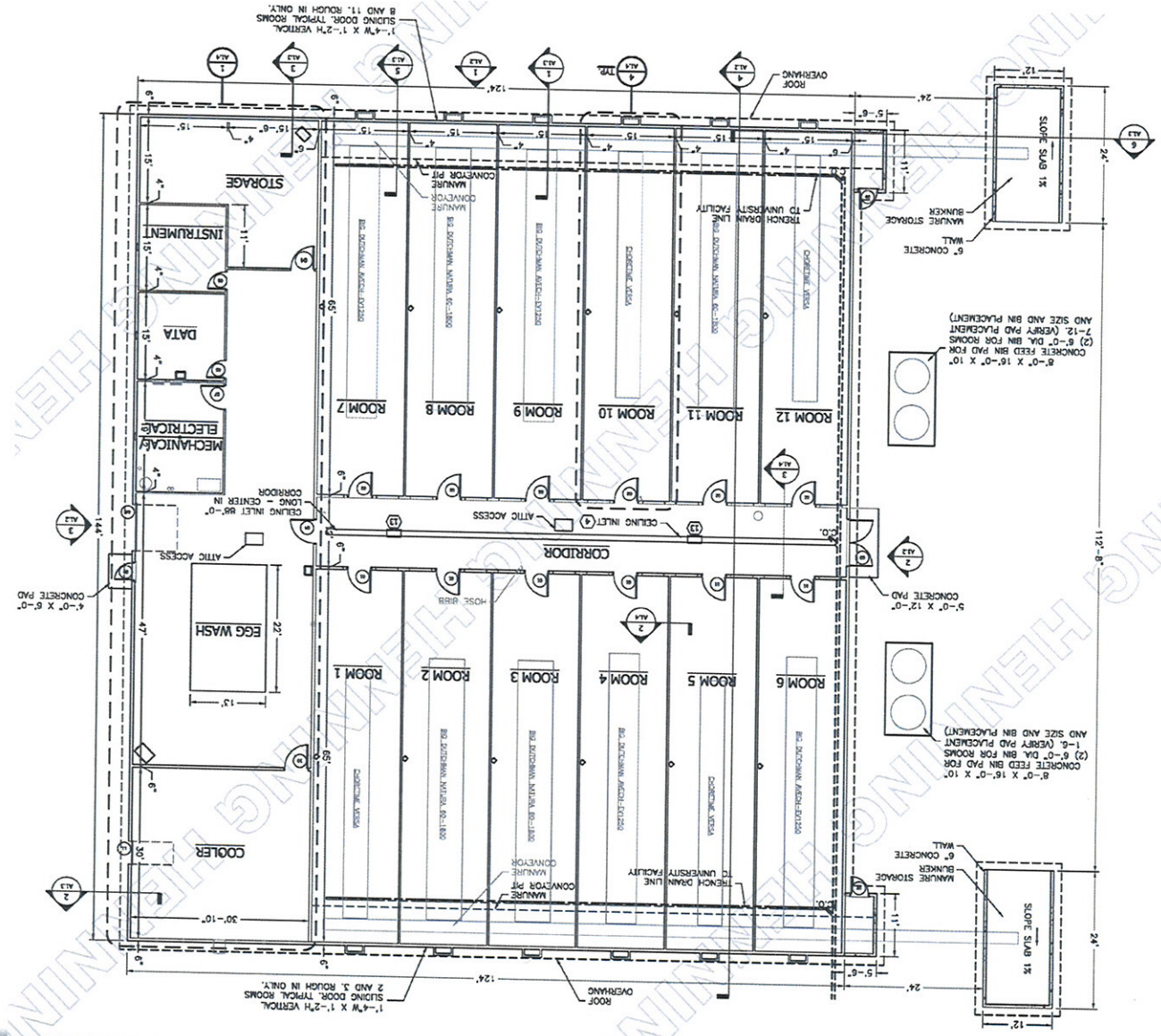
Project Approval – Authorization to Proceed  
Poultry Laying Hen Facility

**South Campus Farms Location**



# Project Approval – Authorization to Proceed

## Poultry Laying Hen Facility



# **Background Information**

MICHIGAN STATE  
UNIVERSITY

June 7, 2010

**MEMORANDUM**



**To:** Trustee Finance Committee  
**From:** Fred L. Poston *[Signature]*  
**Subject:** **Authorization to Plan**  
Poultry Laying Hen Facility

**RECOMMENDATION**

BE IT RESOLVED that the Trustee Finance Committee recommends that the Board of Trustees authorize the Administration to plan for the project entitled Poultry Laying Hen Facility.

**BACKGROUND**

**Program Need:**

Legislation influencing animal housing has become increasingly prevalent. There continues to be scrutiny and push to regulate poultry production with legislation being passed in California (2008) and pressure of a ballot initiative in Ohio (2010). Michigan was affected in 2009 with the passage of Michigan legislation (PA 117) prohibiting the use of conventional cages used in laying hen production in the next ten years. As a result, stakeholders/producers in Michigan and beyond are concerned regarding this change and how best to identify and implement the new housing requirements.

Answers to critical questions regarding housing type, space allotments, etc., will impact capital expenditures in Michigan, the U.S., and beyond for the next eight to 15 years. Research is essential to determine the most efficacious type of housing that will be used to replace laying hen housing in Michigan, which is projected to require an investment of \$50 to \$200 million dollars during the ten-year phase-out of conventional housing. The transition requires research and extension programs, and the research requires a new specifically-designed facility.

**General Description of the Project:**

The planning of the project is expected to include the construction of a pole barn facility to house a minimum of approximately 11,000 laying hens in three different housing systems. The housing facility would have ten individual rooms (1,000 hens



OFFICE OF THE  
VICE PRESIDENT FOR  
FINANCE AND  
OPERATIONS

Fred L. Poston  
Vice President and  
Treasurer

Michigan State University  
412 Administration Building  
East Lansing, Michigan  
48824-1046

Phone 517.353.5014  
Fax 517.353.6772  
www.vplo.msu.edu

per room) with two rooms containing conventional housing, four rooms of enriched housing, and four rooms of an aviary system.

The facility would be built at the Poultry Research, Teaching and Extension Center, which is located on Jolly Road east of College Road in the Agricultural District. The location of this project is consistent with the Campus Master Plan and Planning Principles.

Based on an assessment of the factors stated in the Project Planning and Approval process concerning Project Labor Agreements (PLA), the Vice President for Finance and Operations and Treasurer has determined that a PLA would not be required for this project.

**Communication Plan:**

During the planning phase, the campus community, including faculty and staff who work with animal welfare research at MSU will be given an opportunity to provide feedback on the project as it is being designed. Input from the project planning team will be solicited during the design phase.

**Preliminary Project Cost Information:**

Based on current pricing information, the preliminary cost estimate is \$1.1 million which will be funded by industry partners. This estimate may change as planning progresses and the project scope is further defined.

cc: D. Brower, R. Flinn, J. Kacos, G. Klein, B. Kranz, K. Lindahl, M. McCabe,  
J. Mumma, R. Nestle, D. Quinney, C. Reid, B. Groves