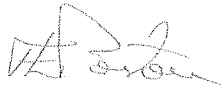


MICHIGAN STATE
UNIVERSITY

October 17, 2012

MEMORANDUM

To: Trustee Finance Committee

From: Fred L. Poston 

Subject: **Project Approval - Authorization to Proceed**
Facility for Rare Isotope Beams - New High Bay

RECOMMENDATION

BE IT RESOLVED that the Trustee Finance Committee recommends that the Board of Trustees authorize the Administration to proceed with the project entitled Facility for Rare Isotope Beams - New High Bay, and to approve a budget of \$15,500,000.

BACKGROUND

Program Need:

To accommodate the aggressive construction schedule planned for the Facility for Rare Isotope Beams, there is an immediate need to create space for assembly and testing of the technical equipment that will be installed in the facility. This is a part of the overall facility master plan.



OFFICE OF THE
VICE PRESIDENT FOR
FINANCE AND
OPERATIONS

Fred L. Poston
Vice President and
Treasurer

Michigan State University
Hannah Administration Building
426 Auditorium Road, Room 412
East Lansing, Michigan
48824

Phone 517.355.5014
Fax 517.353.6772
www.vpfo.msu.edu

Description of the Project:

The FRIB project is located at the corner of Wilson Road and Bogue Street in the central academic district. The planning of this project is anticipated to include a new 27,000 square foot high bay (known as the SRF High Bay), which will be used to house superconducting radio frequency technical facilities at MSU including the following designated areas: incoming accelerating structures (cavity) QA and inspection, cavity hydrogen de-gassing furnace, cavity processing and cold-mass assembly facilities, power coupler conditioning, vertical cavity test area, cryomodule test facility, test facility control room, and cryogenic systems. This will yield an integrated and more consolidated base of operations improving superconducting cavity and cold mass production and production cavity and cryomodule test efficiency.

The Architect/Engineer is SmithGroup, and the Construction Manager is Barton Malow.

Based on an assessment of the factors stated in the Project Planning and Approval process concerning Project Labor Agreements (PLA), the Vice President for Finance and Operations and Treasurer has determined that a PLA would not be required for this project.

Communication Feedback:

The campus community was given opportunities to provide feedback during the planning phase and any concerns have been addressed in the project design.

The Office of Campus Planning and Administration has reviewed this project and found it to be consistent with the Campus Master Plan and Planning Principles. The Campus Infrastructure Planning Work Group also supports the recommendation to proceed with the project.

As construction proceeds, the schedule will be reviewed with the campus community.

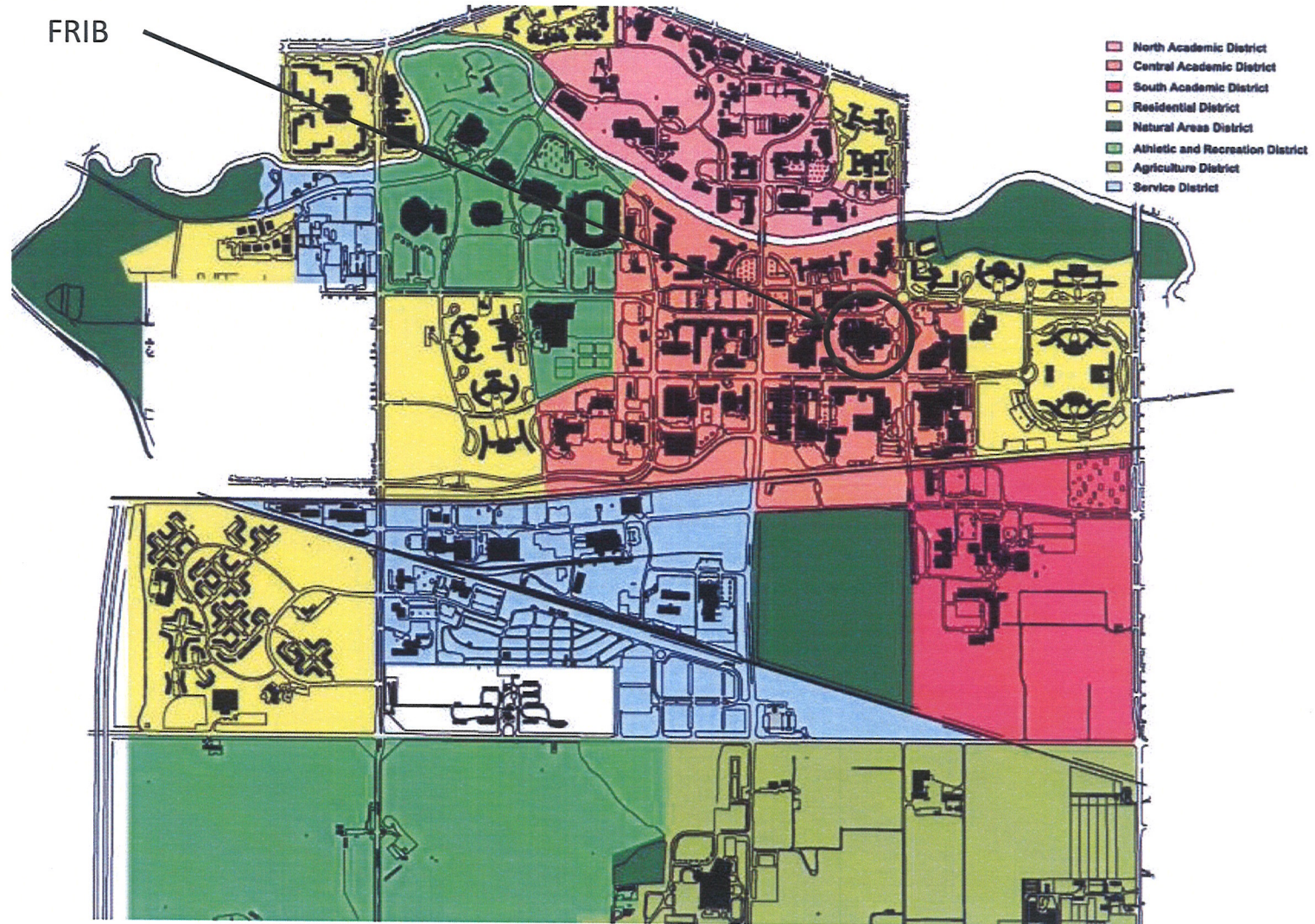
Project Cost and Timetable:

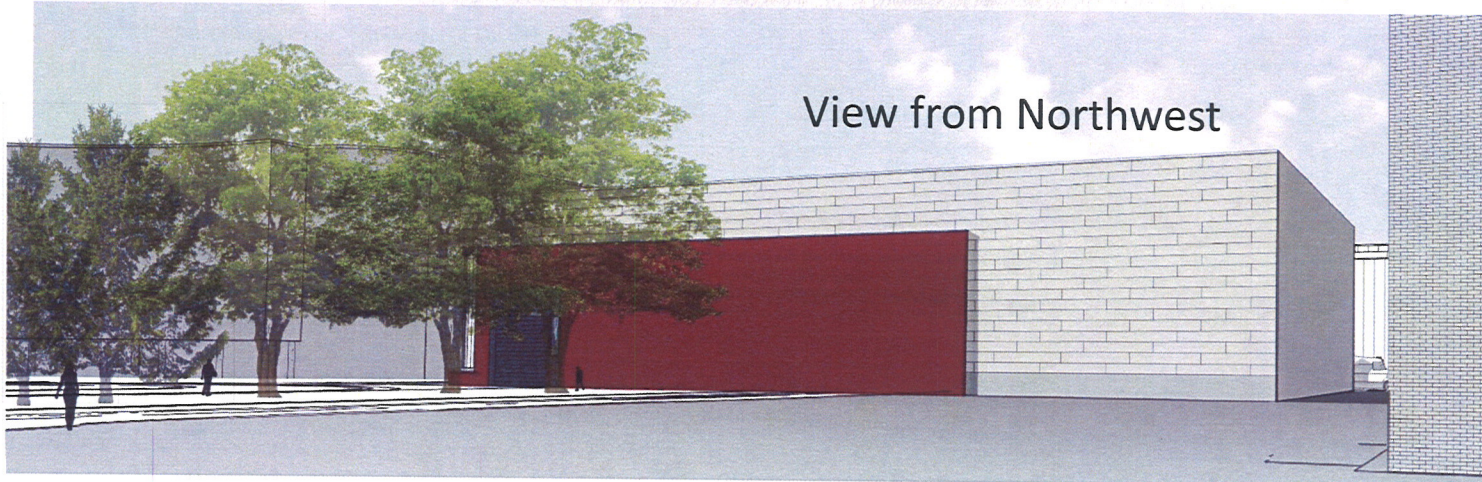
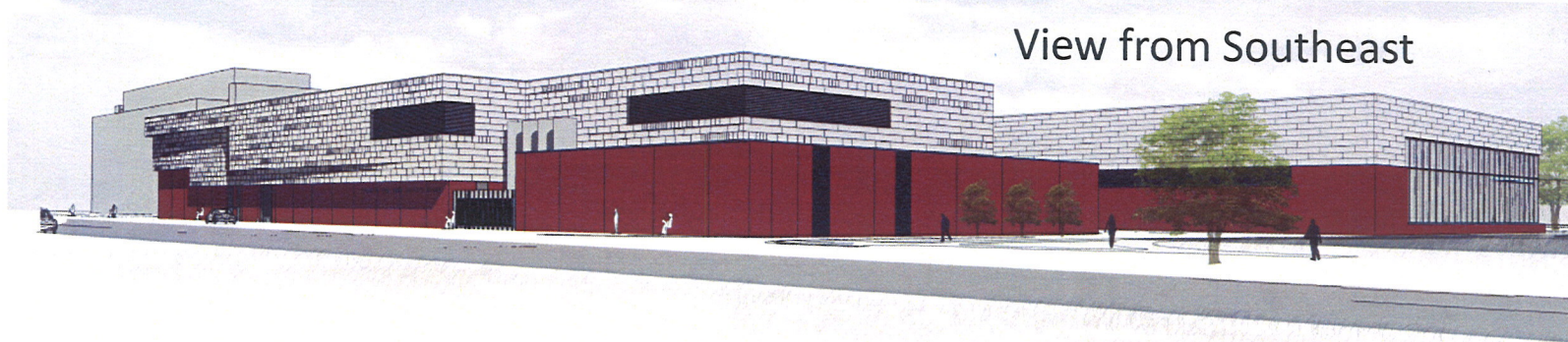
The budget for this Construction Manager project is \$15,500,000. The source of funds for this project is tax-exempt financing with debt repayment from the Office of the Provost and the National Superconducting Cyclotron Laboratory.

Construction is planned to begin in March 2013 and will be substantially complete by March 2014, with a final completion by August 2014.

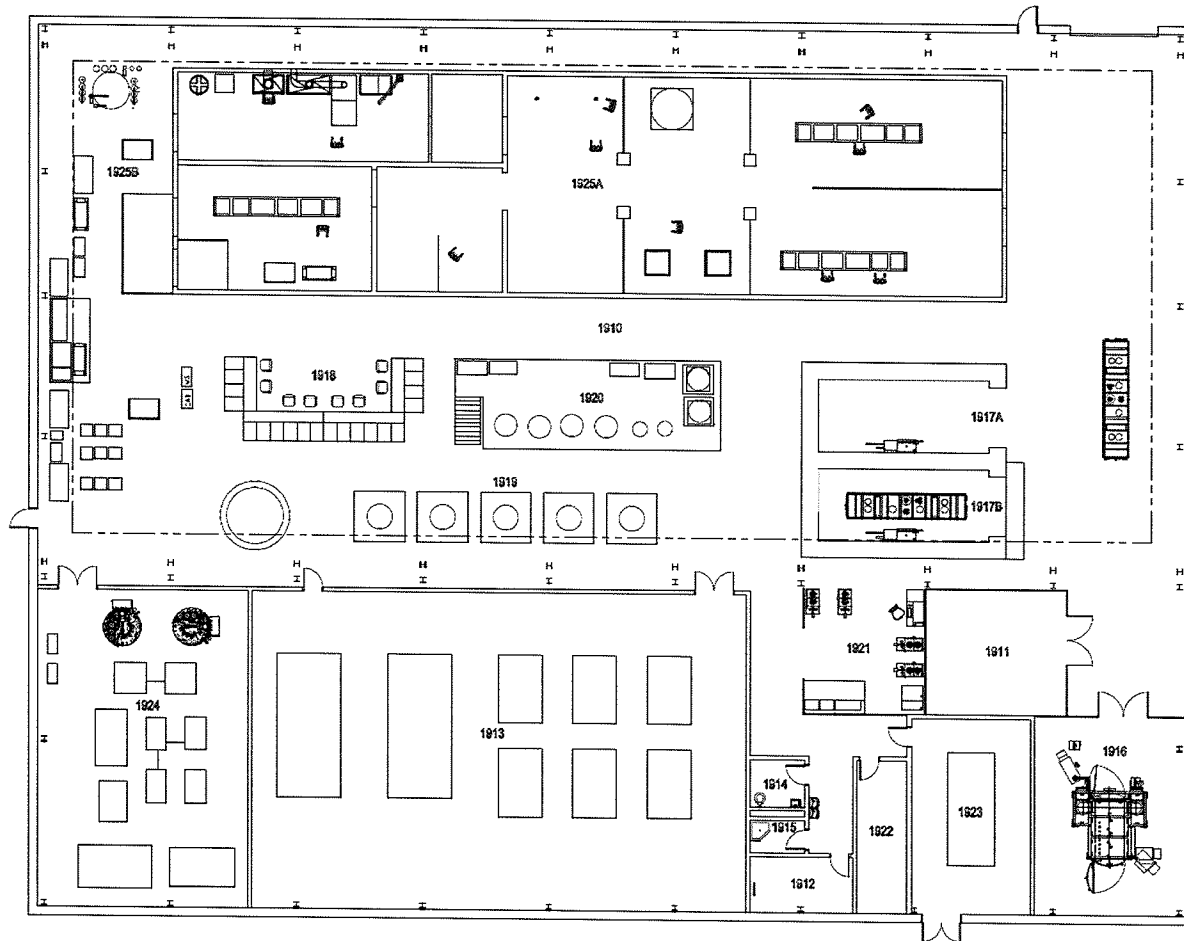
cc: R. Flinn, M. Haas, J. Kacos, G. Klein, B. Kranz, B. Latta, K. Lindahl,
M. McCabe, J. Mumma, R. Nestle, D. Quinney, T. Glasmacher, B. Bull,
C. Grubbe, K. Caron

Project Approval – Authorization to Proceed Facility for Rare Isotope Beams – New High Bay





Floor Plan

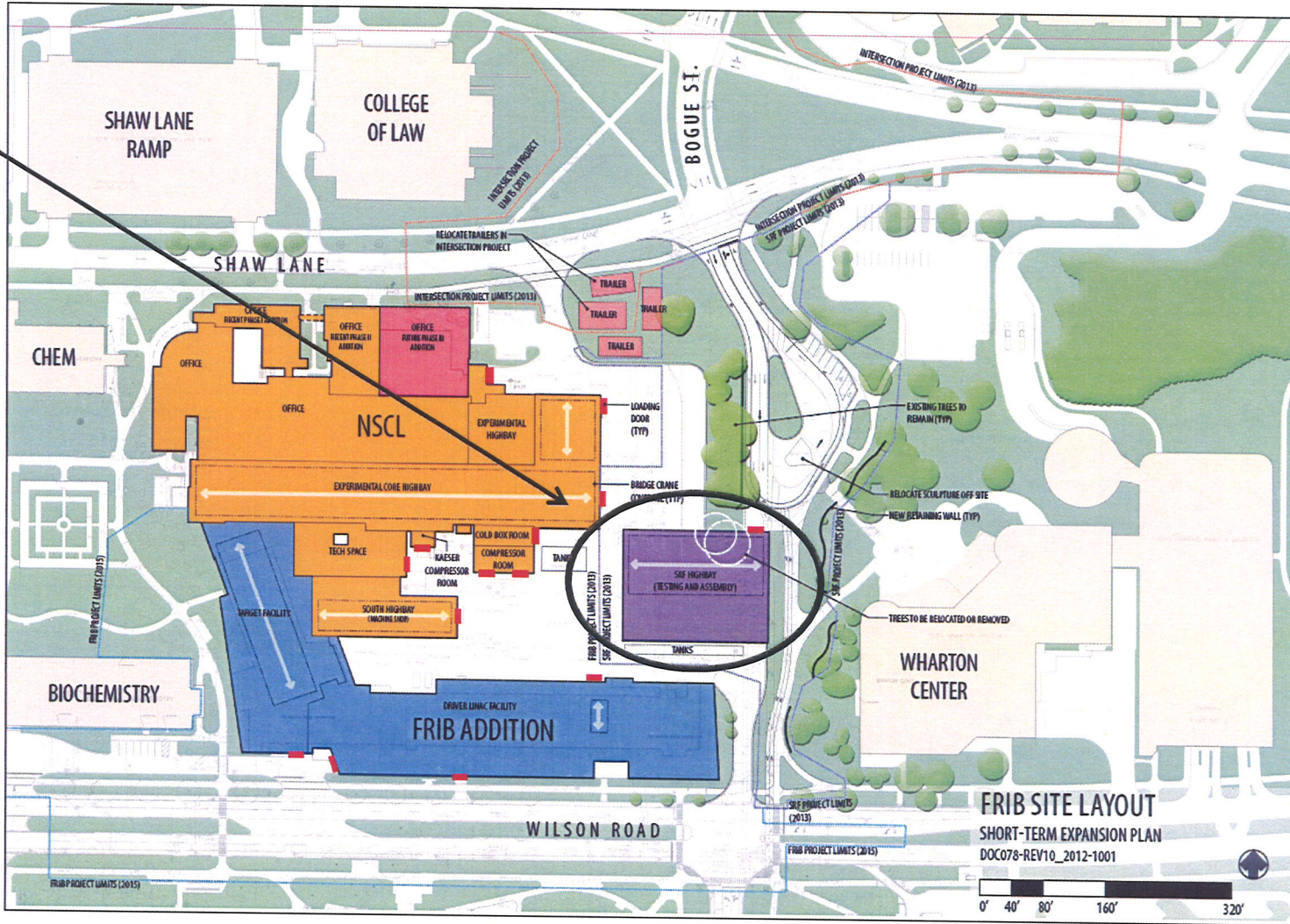


ROOM LEGEND	
1910	HIGHBAY
1911	INCOMING CAVITY QA & INSPECTION AREA
1912	WATER SERVICE ROOM
1913	MECHANICAL ROOM
1914	UNISEX TOILET ROOM
1915	JANITOR CLOSET
1916	CAVITY HYDROGEN DE-GASSING FURNACE AREA
1917A	CRYOMODULE TEST FACILITY - TEST CAVE 1
1917B	CRYOMODULE TEST FACILITY - TEST CAVE 2
1918	TEST FACILITY CONTROL ROOM
1919	VERTICAL CAVITY TEST AREA
1920	CAVITY INSERT PREP (ABOVE)
1921	POWER COUPLER CONDITIONING
1922	TELECOMMUNICATION ROOM
1923	ELECTRICAL SUBSTATION ROOM
1924	CRYOGENIC SYSTEMS
1925A	CAVITY PROCESSING & COLD-MASS ASSEMBLY FACILITIES
1925B	CLEAN ROOM PREP AREA



Short-Term Expansion Plan

New High Bay (SRF)

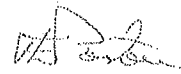


MICHIGAN STATE
UNIVERSITY

June 8, 2012

MEMORANDUM

To: Trustee Finance Committee

From: Fred L. Poston 

Subject: **Authorization to Plan**
Facility for Rare Isotope Beams - New High Bay



RECOMMENDATION

BE IT RESOLVED that the Trustee Finance Committee recommends that the Board of Trustees authorize the Administration to plan for the project entitled Facility for Rare Isotope Beams - New High Bay.

BACKGROUND

Program Need:

To accommodate the aggressive construction schedule planned for the Facility for Rare Isotope Beams, there is an immediate need to create space for assembly and testing of the technical equipment that will be installed in the facility. This is a part of the overall facility master plan.

General Description of the Project:

The planning of this project is anticipated to include a new 19,000 square foot high bay, which will be used to house superconducting radio frequency technical facilities at MSU including the following designated areas: incoming accelerating structures (cavity) QA and inspection, cavity hydrogen de-gassing furnace, cavity processing and cold-mass assembly facilities, power coupler conditioning, vertical cavity test area, cryomodule test facility, test facility control room, and cryogenic systems. This will yield an integrated and more consolidated base of operations improving superconducting cavity and cold mass production and production cavity and cryomodule test efficiency.

The Facility for Rare Isotope Beams is located near the intersection of Shaw Lane and Bogue Street in the central academic district. The location of this project is consistent with the Campus Master Plan and Planning Principles. Bogue Street, including numerous mature oak, maple, and pine trees, will be impacted by the construction of this High Bay.



OFFICE OF THE
VICE PRESIDENT FOR
FINANCE AND
OPERATIONS

Fred L. Poston
Vice President and
Treasurer

Michigan State University
Hannah Administration Building
426 Auditorium Road, Room 412
East Lansing, Michigan
48824

Phone 517.355.5014
Fax 517.353.6772
www.vpfo.msu.edu

Authorization to plan for partial closure of Bogue Street was authorized in January 2012 and will be approved when this project proceeds.

Based on an assessment of the factors stated in the Project Planning and Approval process concerning Project Labor Agreements (PLA), the Vice President for Finance and Operations and Treasurer has determined that a PLA would not be required for this project.

Communication Plan:

During the planning phase, the campus community will be given opportunities to provide feedback on the project as it is being designed. Input from the project planning team will be solicited during the design phase.

Preliminary Project Cost Information:

Based on cost experience for similar projects and current pricing information, the preliminary project cost estimate is \$10,000,000. This estimate may change as planning progresses and the project scope is further defined.

The source of funds for the project is expected to be tax exempt financing with debt repayment from the Office of the Provost and the National Superconducting Cyclotron Laboratory.

cc: R. Flinn, M. Haas, J. Kacos, G. Klein, B. Kranz, B. Latta, K. Lindahl,
M. McCabe, J. Mumma, R. Nestle, D. Quinney, B. Bull, K. Gelbke,
T. Glasmacher, C. Grubbe

CP12129