

**MICHIGAN STATE**  
**UNIVERSITY**

April 3, 2013

**MEMORANDUM**

**To:** Trustee Finance Committee

**From:** Ronald T. Flinn *RTF*  
Vice President for Strategic Infrastructure Planning and Facilities

**Subject:** **Project Approval - Authorization to Proceed**  
Facility for Rare Isotope Beams - 25 Mega Watt Electrical Duct Bank

**RECOMMENDATION**

BE IT RESOLVED that the Trustee Finance Committee recommends that the Board of Trustees authorize the Administration to proceed with the project entitled Facility for Rare Isotope Beams - 25 Mega Watt Electrical Duct Bank, and that it approve a budget of \$26,000,000.



OFFICE OF THE  
EXECUTIVE VICE  
PRESIDENT FOR  
ADMINISTRATIVE  
SERVICES

Michigan State University  
Hannah Administration Building  
426 Auditorium Road, Room 412  
East Lansing, Michigan  
48824

Phone 517.355.5014  
Fax 517.353.6772  
[www.adminsv.msu.edu](http://www.adminsv.msu.edu)

**BACKGROUND**

**Program Need:**

The existing electrical cables from the T.B. Simon Power Plant do not have enough capacity to carry future electrical loads required by the Facility for Rare Isotope Beams (FRIB).

**Description of the Project:**

The electrical duct bank will begin to the west of the T.B Simon Power Plant in the service district and end in the central academic district at the northwest corner of the Bogue Street and Wilson Road intersection. This project involves installation of a concrete-encased duct bank from the Power Plant to FRIB which will be capable of transmitting up to 25 mega-watts of electrical power. This project is necessary for the delivery of power to FRIB.

The Architect/Engineer is SmithGroup. The Construction Manager is Barton Malow.

Based on an assessment of the factors stated in the Project Planning and Approval process concerning Project Labor Agreements (PLA), the Vice President for Strategic Infrastructure Planning and Facilities has determined that a PLA would not be required for this project.

**Communication Feedback:**

The campus community was given opportunities to provide feedback during the planning phase and any concerns have been addressed in the project design.

The Office of Campus Planning and Administration has reviewed this project and found it to be consistent with the Campus Master Plan. The Campus Infrastructure Planning Work Group also supports the recommendation to proceed with the project.

As construction proceeds, the schedule will be reviewed with the campus community.

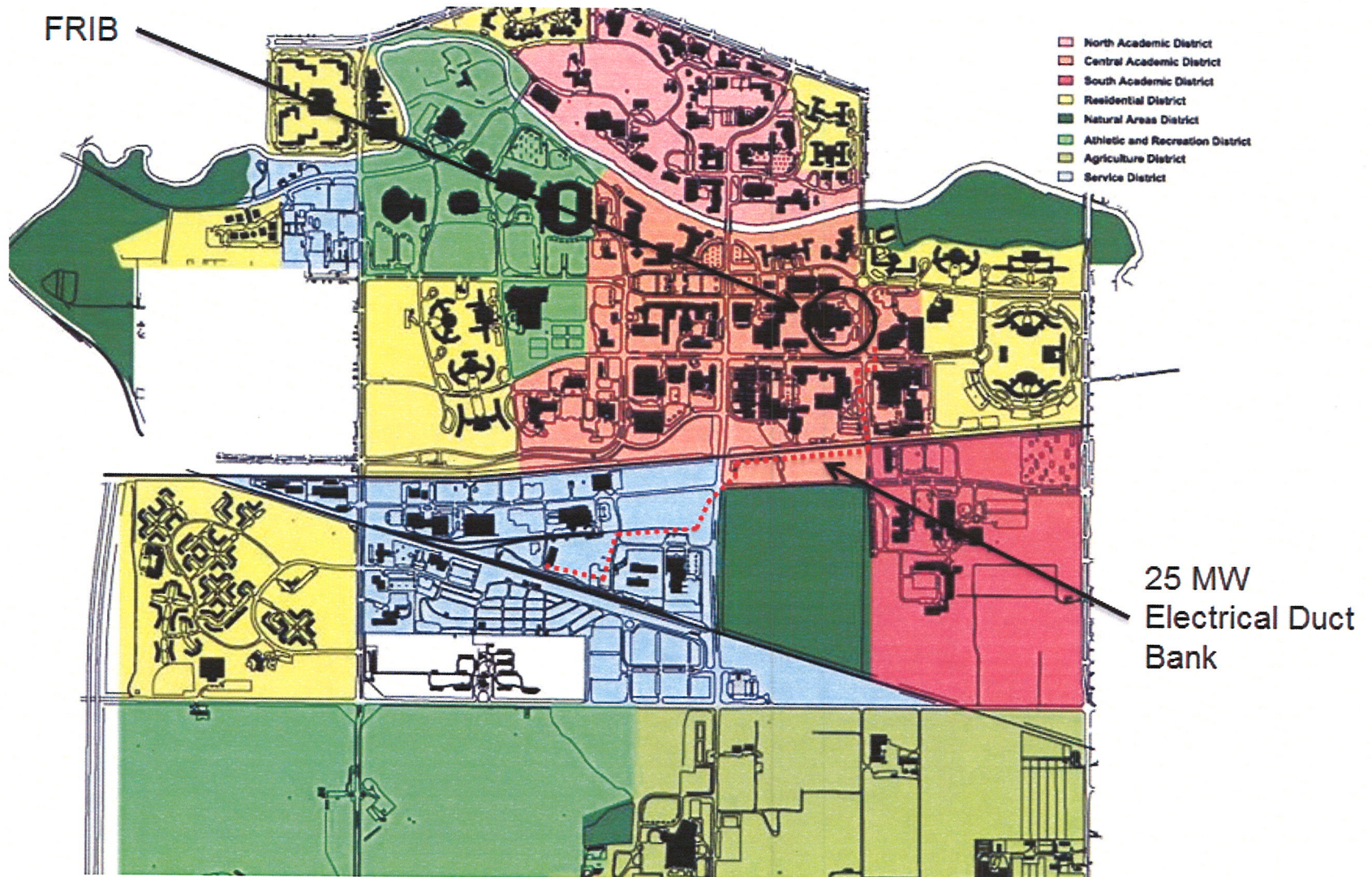
**Project Cost and Timetable:**

The budget for this Construction Manager project is \$26,000,000, which is being funded by tax-exempt financing with debt repayment from utility charges to the project.

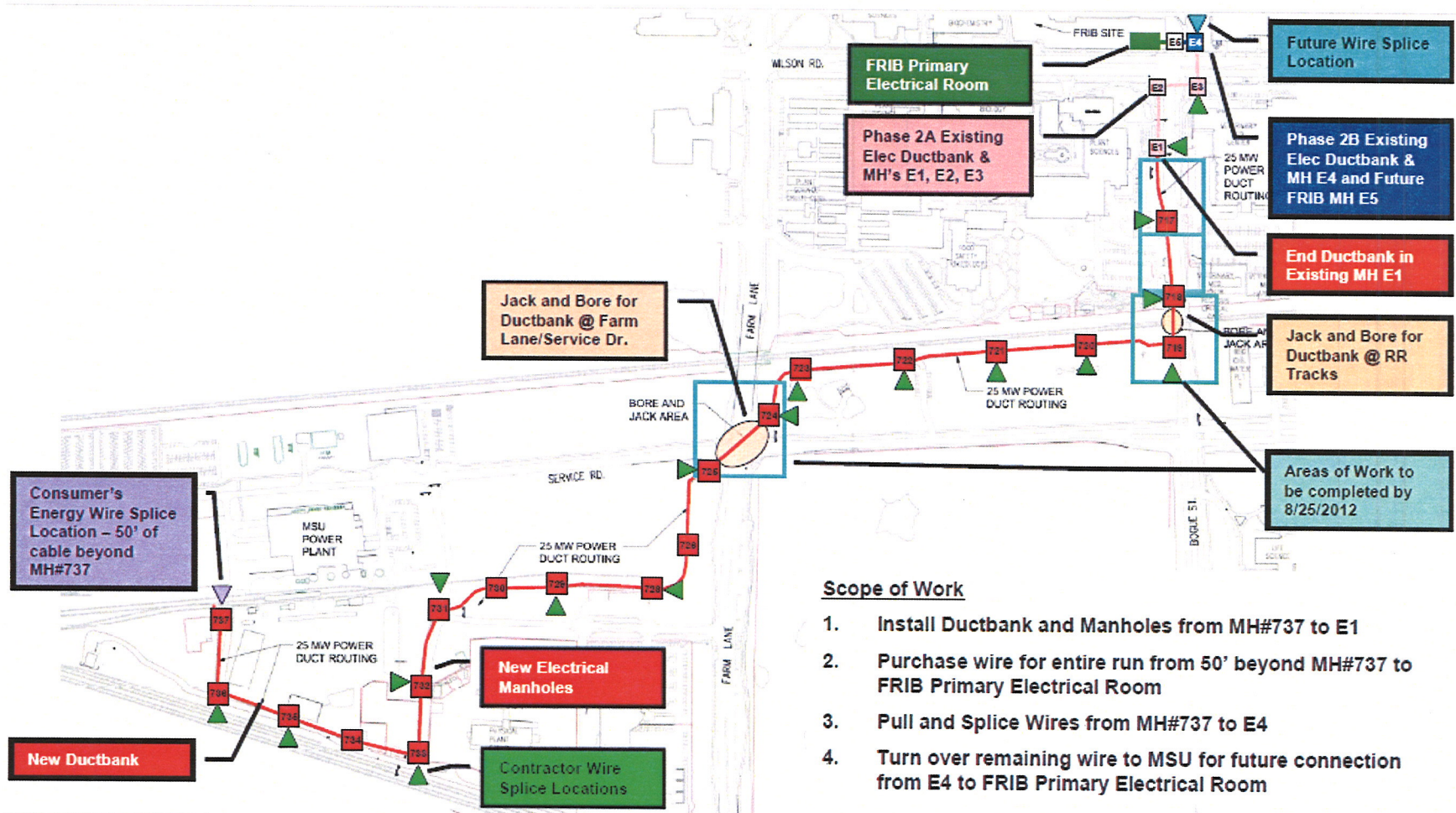
Construction is planned to begin in May 2013, with substantial completion in September 2016, and final completion by December 2016.

cc: R. Flinn, V. Gore, M. Haas, J. Kacos, G. Klein, B. Kranz, B. Latta,  
M. McCabe, J. Mumma, R. Nestle, D. Quinney, S. Udpa, T. Glasmacher,  
B. Bull, A. Bryan, L. Adams

Project Approval - Authorization to Proceed  
Facility for Rare Isotope Beams – 25 Mega Watt Electrical Duct Bank



Project Approval - Authorization to Proceed  
 Facility for Rare Isotope Beams – 25 Mega Watt Electrical Duct Bank

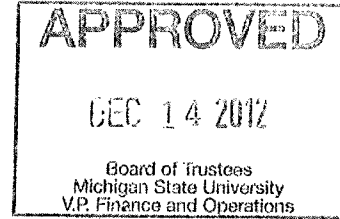


**Scope of Work**

1. Install Ductbank and Manholes from MH#737 to E1
2. Purchase wire for entire run from 50' beyond MH#737 to FRIB Primary Electrical Room
3. Pull and Splice Wires from MH#737 to E4
4. Turn over remaining wire to MSU for future connection from E4 to FRIB Primary Electrical Room


**MICHIGAN STATE**  
**UNIVERSITY**

December 5, 2012



**MEMORANDUM**

**To:** Trustee Finance Committee

**From:** Fred L. Poston 

**Subject:** **Authorization to Plan**  
Facility for Rare Isotope Beams - 25 Mega Watt Electrical  
Duct Bank

**RECOMMENDATION**

BE IT RESOLVED that the Trustee Finance Committee recommends that the Board of Trustees authorize the Administration to plan for the project entitled Facility for Rare Isotope Beams - 25 Mega Watt Electrical Duct Bank.

**BACKGROUND**

**Program Need:**

The existing electrical cables from the T.B. Simon Power Plant do not have the capacity to carry future loads required by the Facility for Rare Isotope Beams (FRIB) Facility.

**General Description of the Project:**

The planning of this project is anticipated to include the installation of a concrete encased duct bank from the T.B. Simon Power Plant to FRIB/Cyclotron which will be capable of transmitting up to 25 MW of electrical power and have spare capacity for future campus needs. This project is necessary for the delivery of power to the FRIB facility regardless of the sources or providers of the power.

The electrical duct bank will begin to the west of the T.B. Simon Power Plant in the Service District and terminate at the northwest corner of Wilson Road and Bogue Street in the central academic district. The location of this project is consistent with the Campus Master Plan and Planning Principles.

Based on an assessment of the factors stated in the Project Planning and Approval process concerning Project Labor Agreements (PLA), the Vice President for Finance and Operations and Treasurer has determined that a PLA would not be required for this project.



OFFICE OF THE  
VICE PRESIDENT FOR  
FINANCE AND  
OPERATIONS

Fred L. Poston  
Vice President and  
Treasurer

Michigan State University  
Hannah Administration Building  
126 Auditorium Road, Room 412  
East Lansing, Michigan  
48824

Phone 517.355.5014  
Fax 517.353.6772  
[www.vpfo.msu.edu](http://www.vpfo.msu.edu)

**Communication Plan:**

During the planning phase, the campus community will be given opportunities to provide feedback on the project as it is being designed. Input from the project planning team will be solicited during the design phase.

**Preliminary Project Cost Information:**

Based on cost experience for similar projects and current pricing information, the preliminary project cost estimate is \$26,000,000. This estimate may change as planning progresses and the project scope is further defined.

The source of funds for the project is expected to be tax-exempt financing.

cc: R. Flinn, M. Haas, J. Kacos, G. Klein, B. Kranz, B. Latta, K. Lindahl,  
M. McCabe, J. Mumma, R. Nestle, D. Quinney, T. Glasmacher, B. Bull,  
A. Bryan, L. Adams

CP12132