



GLOBAL RESILIENCE INDEX INITIATIVE

A COMMON LANGUAGE OF
RISK



DR NICOLA RANGER
DEPUTY DIRECTOR, Centre for Greening Finance and
Investment
HEAD OF CLIMATE AND ENVIRONMENTAL ANALYTICS,
Oxford Sustainable Finance Group, SSEE, University of

FINANCIAL DECISIONS TODAY HAVE A SYSTEMIC IMPACT ON SOCIETAL RESILIENCE THAT CAN LOCK-IN RISK FOR DECADES ACROSS MULTIPLE DIMENSIONS



← **USD 49 billion for all (tracked) adaptation in 2019/20**

**TOTAL INFRASTRUCTURE INVESTMENT
GLOBALLY: ~ USD 2.7 TRILLION EACH YEAR**

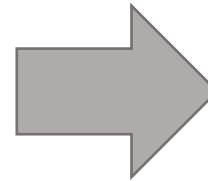
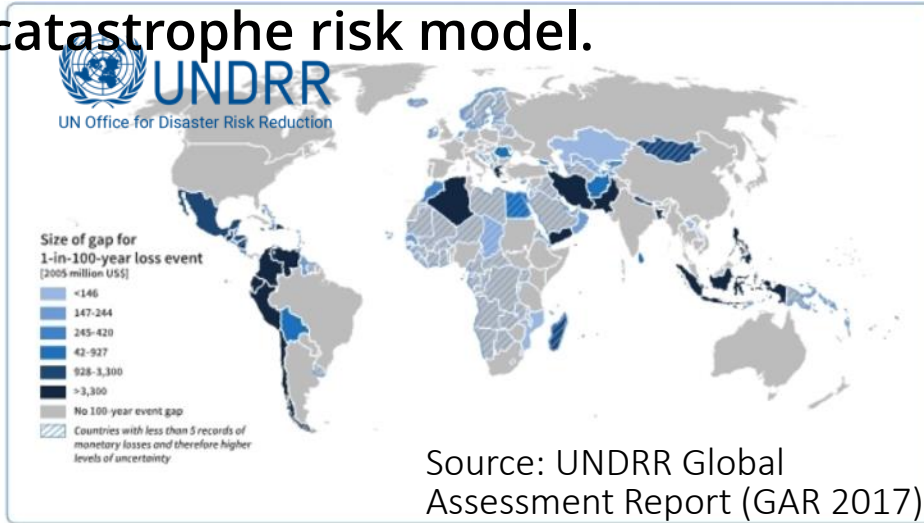


GLOBAL RESILIENCE INDEX (GRI) INITIATIVE

CREATING A COMMON LANGUAGE OF RISK
Embedding risk within global financial flows and
decisions at all levels to drive resilience and
resilient investment



Builds upon the UN's GAR17. A multi-agency effort to create the first public good, globally consistent, multi-hazard catastrophe risk model.



Proven public-private-academic model, focussed on standards and interoperability





PUBLIC – PRIVATE COLLABORATION TO BUILD A COMMON LANGUAGE AND UNDERSTANDING OF RISK



Public-private partnership co-chaired by
World Bank – UNDP – Insurance Industry



Partnership of national governments,
UN agencies, MDBs and private sector



Public-private partnership institutional
investors, financial institutions, ratings
agencies, knowledge organisations



*Open platform for collaboration
Contributing institutions to date:*

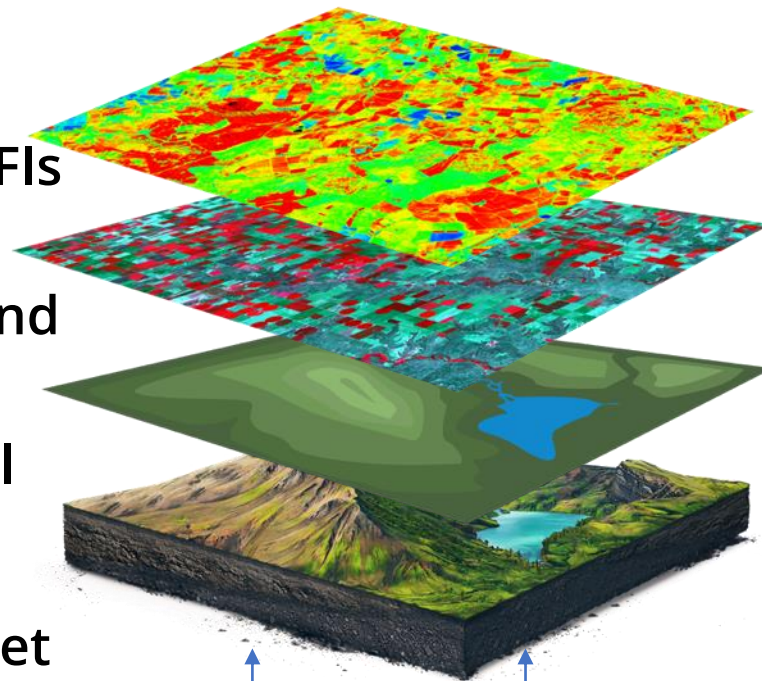


GLOBAL RESILIENCE INDEX (GRI) INITIATIVE OPEN PHYSICAL RISK DATA AND ANALYTICS

Vision:

Finance and investment, IFIs
government, civil society
and firms able to access and
use globally consistent,
transparent acute physical
risk data for:

- Every point on the planet
- Covering all material risks
- Present and future



Why is this different?

Acute risks: using insurance
approaches

Globally-consistent, open data,
standards and indices: An open
platform of high-quality, consistent,
hazard, exposure and risk data
covering material risks.

Transparent & builds upon what is
exists: combines best-in-class data
from partners to generate sub-
national/asset-level risk metrics:
exposures, AALs, EPs

Strategically fills gap to cover material
risks and represent uncertainties,

GRII COMBINES BEST-IN-CLASS DATA AND MODELS TO PROVIDE GLOBALLY CONSISTENT, BASELINE VIEW OF RISK REQUIRED TO SUPPORT THE RACE TO RESILIENCE

Antofagasta

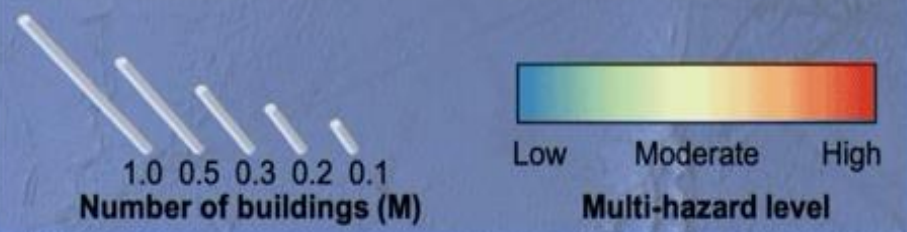
Flood hazard: **Low**

Seismic hazard: **High**

Rio de Janeiro

Flood hazard: **High**

Seismic hazard: **Low**



Data SIO, NOAA, U.S. Navy, NGA, GEBCO
Image Landsat / Copernicus

GLOBALLY-CONSISTENT, PROBABILISTIC RISK ANALYTICS

HAZARDS

FLOOD (SEA LEVEL RISE)

TROPICAL CYCLONE

EARTHQUAKE

DROUGHT

WILDFIRE

HEATWAVE

LANDSLIDE

CHRONIC HAZARDS

WITH CLIMATE CHANGE

EXPOSURE & VULNERABILITY

INFRASTRUCTURE

BUILDINGS

PEOPLE

INDUSTRY & AGRICULTURE

ENVIRONMENT & NATURE

SOCIAL VULNERABILITIES

**FUTURE URBANISATION,
DEVELOPMENT &
CHANGING**

VULNERABILITIES

IMPACT & RISK

DIRECT ASSET LOSS/DAMAGE

BUSINESS INTERRUPTION

PRODUCTION LOSS

TRADE DISRUPTION

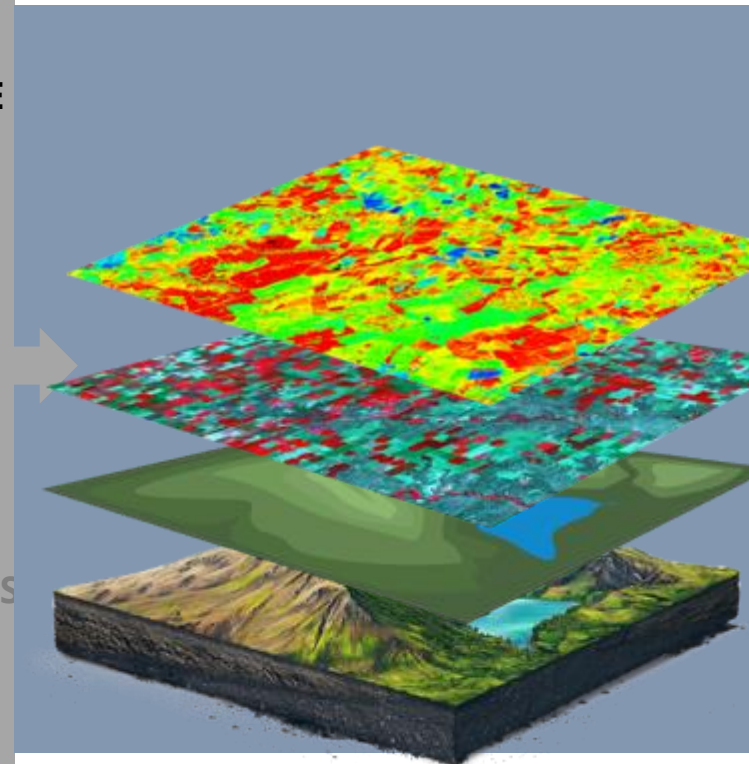
ECONOMIC LOSS

FINANCIAL & FISCAL IMPACTS

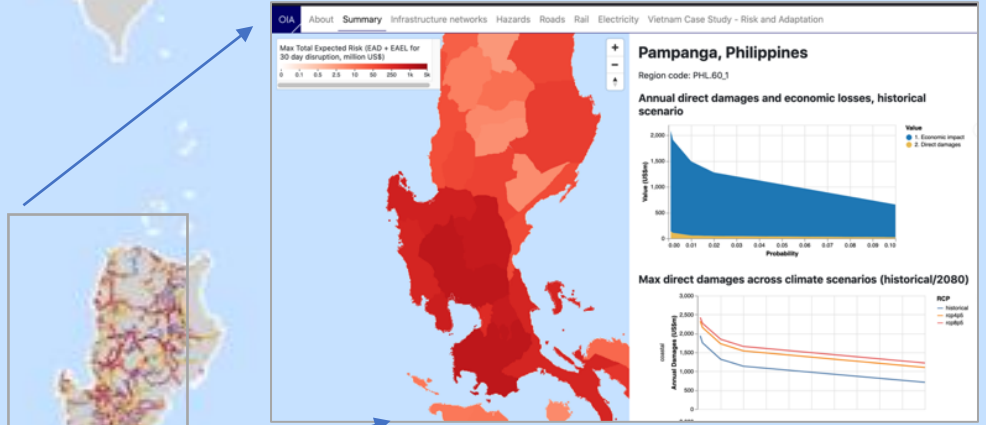
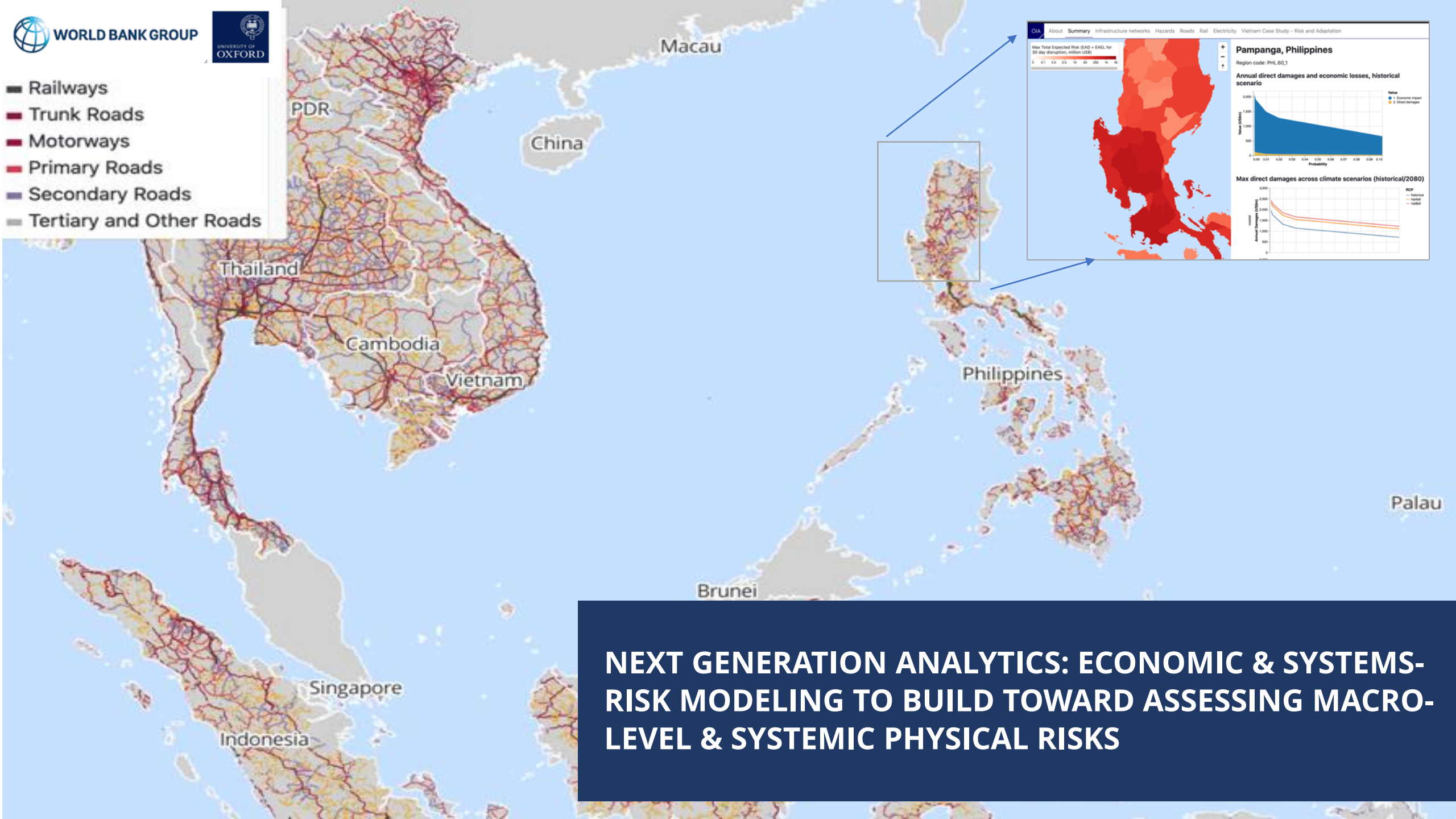
SUPPLY CHAINS

HUMAN DISPLACEMENT

ENVIRONMENT & NATURE

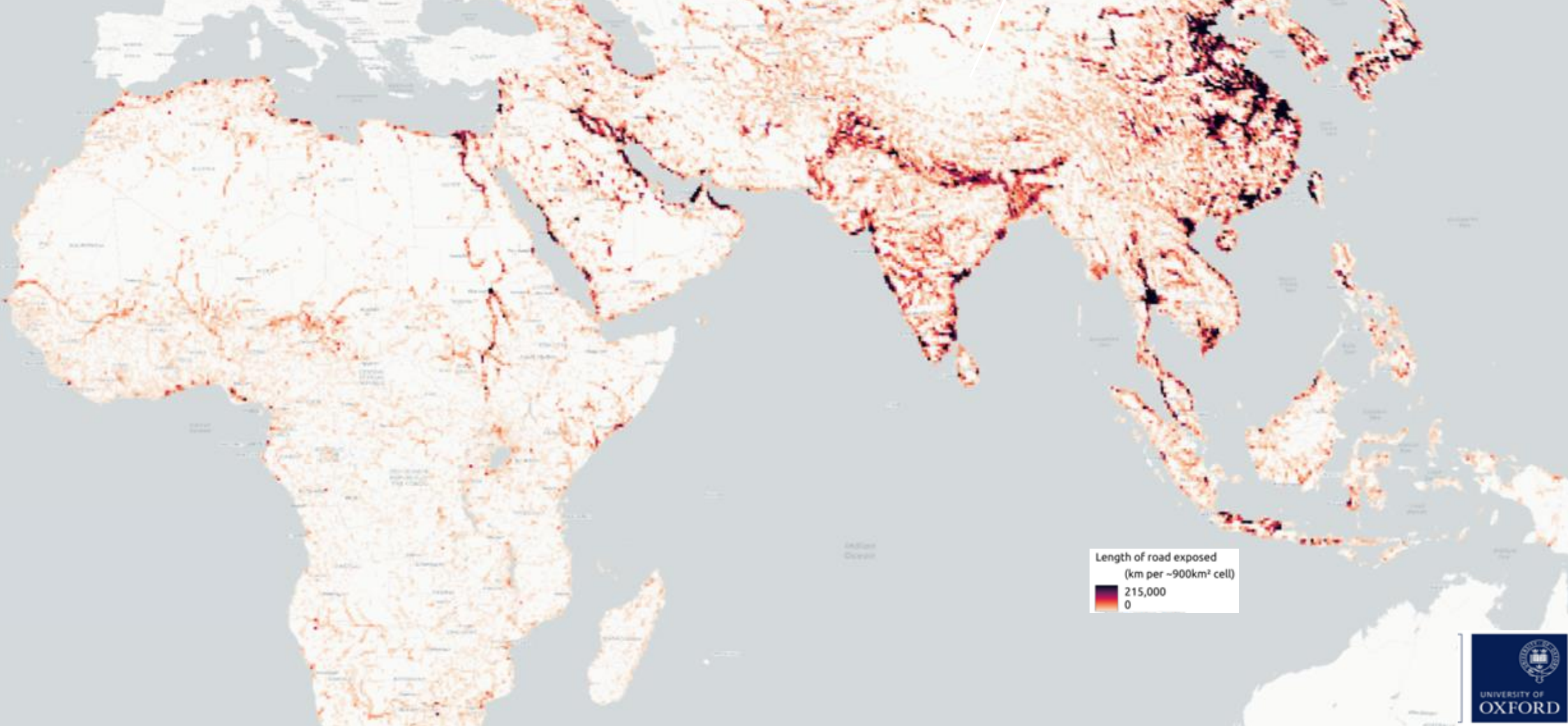


- Railways
- Trunk Roads
- Motorways
- Primary Roads
- Secondary Roads
- Tertiary and Other Roads

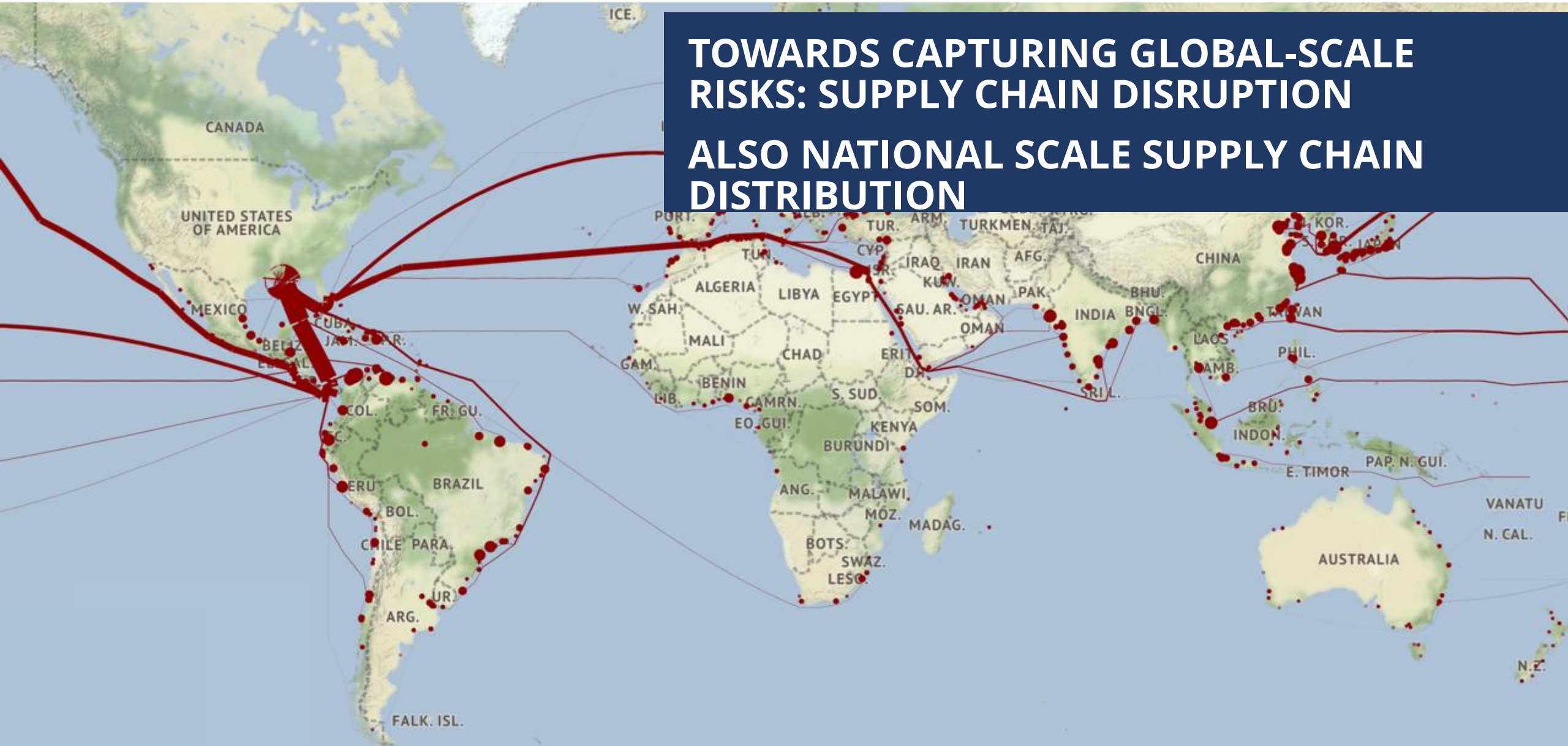


NEXT GENERATION ANALYTICS: ECONOMIC & SYSTEMS-RISK MODELING TO BUILD TOWARD ASSESSING MACRO-LEVEL & SYSTEMIC PHYSICAL RISKS

SATELLITE, AI AND BIG DATA ENABLING GLOBAL SCALE EXPANSION OF ANALYTICS



TOWARDS CAPTURING GLOBAL-SCALE RISKS: SUPPLY CHAIN DISRUPTION ALSO NATIONAL SCALE SUPPLY CHAIN DISTRIBUTION



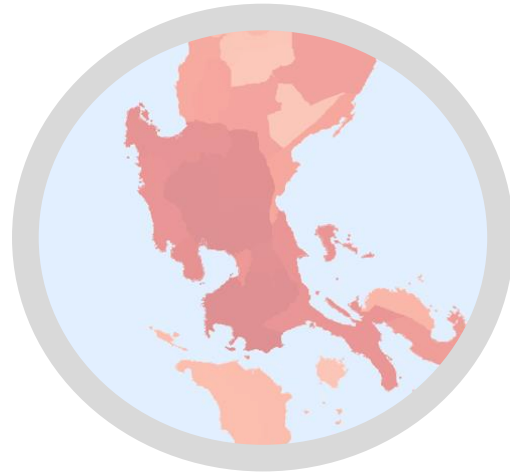
ROADMAP AHEAD

LAUNCH AT
COP26
DEMONSTRAT
OR PLATFORM

FURTHER
DEVELOPMEN
T &
OPERATIONAL
APPLICATION
SET-UP AND
GOVERNANCE
- SUMMER
2022

LAUNCH OF
FULL OPEN
REPOSITORY
AND
INDICES
COP27

GLOBAL
RESILIENCE
INDEX
INITIATIVE



GLOBAL RESILIENCE INDEX INITIATIVE

A COMMON LANGUAGE OF RISK
www.globalresilienceindex.org

