



Goals of the Presentation



Overview of Gateway to Work Program

- Overview of the program development
- Gateway to Work member profile
- Exemptions and qualifying activities
- Phase-in schedule
- Resources provided by the state
- Member communications
- Gateway to Work Community Organizations and Partners



Overview

Gateway to Work is part of the Healthy Indiana Plan and started on January 1, 2019,

- All HIP eligible members who
 - Do not meet an Exemption or
 - Already working at least 20 hours per week reported to FSSA,
- Will be required to engage and report hours completed on ***Gateway to Work Qualifying Activities*** for
- 80 hours per month for 8 of 12 months in a calendar year

Gateway to Work Overview



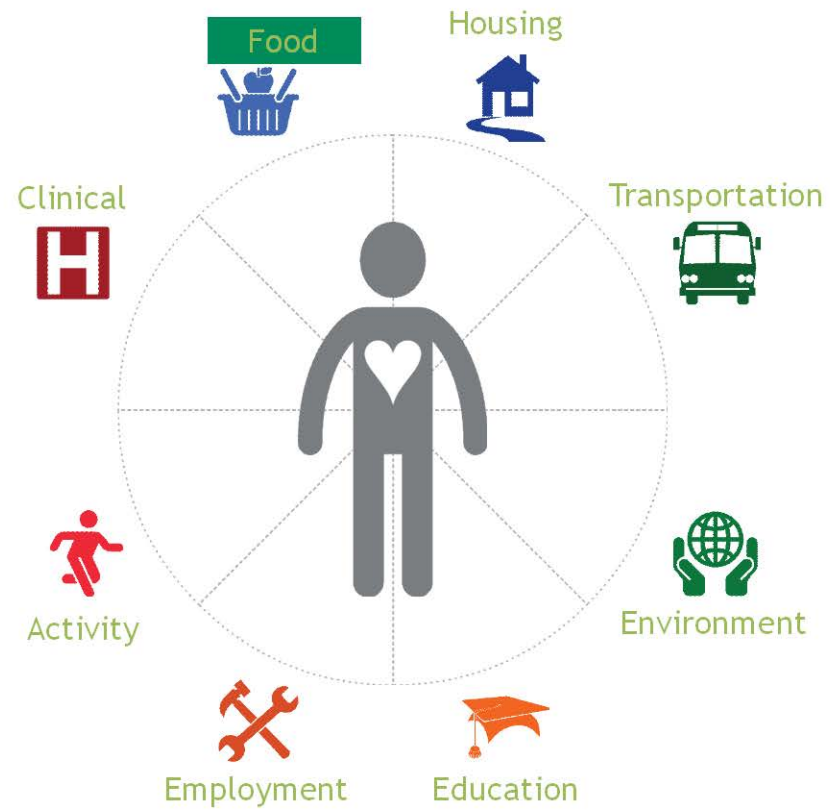
GTW is a community engagement program that:

- Recognizes HIP members are at different stages of their lives and abilities
- Recognizes member barriers have significant impact on readiness for next steps
- Seeks to connect Hoosiers in a meaningful way to workforce and community

Key tenants of GTW:

- Make reporting as simple as possible, and user friendly
- Make web-based tools and general programming easy to navigate
- Enlist MCE partners to assist members in planning and navigating the program
- Maintain robust dialogue with stakeholders to develop the program
- Build community partnerships across the state, so access to engagement activities are readily available
- Include a broad variety of exemptions and countable activities
- Incorporate technology and automation as much as possible, but allow traditional modes such as phone calls as well
- Leverage existing resources from organizations that are experts in the fields of employment, education and community service to create a statewide network

Social Determinants of Health



Will All HIP Members Participate?



Members received an FSSA Notice with their Gateway To Work status:
Exempt, Reporting Met and Reporting

Exempt or Reporting Met

- *Not required to do anything for months in this status*
- Can participate if they would like
- If short term exemption, should make plans to future Reporting

Reporting

- *Member required to participate*
- Utilize web site to learn more about the Gateway to Work program
- Take an assessment on-line or by calling health plan. (no log-in required to participate) - provide guidance on what they could do
- Pick activity/combo of activities and report those via FSSA benefit portal or by calling their health plan



Member Profile

HIP Full-Eligible Members*: 350,017 members

Gateway to Work Referral Status

Exempt: 248,935, **71%** of current members

GTW Required:

Reporting met: 27,694, **8%** of current members

Reporting: 73,388, **21%** of current members

**Totals as of December 31, 2018, 350,017 Total fully-eligible members*



Member Profile

Reporting: 84,912, 22% of current members

- Education - 95% (80,703) have High School Diploma or less:
 - **48%** (40,374) less than a high school education
 - **48%** (40,329) are High School graduates

- Language spoken in household:
 - **98.8%** (83,879) English;
 - **1.2%** (1,019) Spanish,
 - **<1%** (14) Burmese, Arabic, Chinese, Somali, Vietnamese or undetermined

**Totals as of June 30, 2018*



Reporting Members required to Participate

~Darker counties represent the higher populations of Reporting members.

**Totals as of September 30, 2018*
****Total required reporting members 79,512**



Exemptions

- Caregiver of a dependent child under 7 years old
- Caregiver of a disabled dependent
- Homeless
- Illness (Certified) or incapacity (Temporary)
- Institutionalized
- Kinship caregiver of an abused or neglected child
- Medically frail
- Pregnant
- Recently incarcerated
- Student (half or full-time)
- Substance use disorder
- Age 60 years and older
- TANF or SNAP recipient
- Other possible exemptions will be reviewed for good cause on an individual basis

Definitions online at HIP.IN.gov, Gateway to Work or members can call their health plan to discuss.



Qualifying Activities

Work

- Employment
- Job search activities
- On-the-job training
- Homeschooling your children

Learn

- Adult Education (HSE/formerly GED)
- College courses
- English as a second language education
- General education classes
- Job skills training
- Vocation education or training

Serve

- Caregiving services
- Community service
- Volunteer work

Good Cause Qualifying Activity as necessary based on individual review

Definitions online at HIP.IN.gov, Gateway to Work or members can call their health plan to discuss.



Program Phase-In

- Gateway to Work Program started: January 1, 2019
- Participation Hours Phase In:

2019 Gateway to Work Hours Phase In per Month		
1/1/19-6/30/19	7/1/18-9/30/19	10/1/19-12/31/19
0 Hours	20 Hours	40 Hours

- All Reporting members are in compliance for the first six months.
- Phase-in is designed to give members time to:
 - Set up their online reporting access,
 - Report exemptions,
 - Take assessments and search the database for opportunities,
 - Talk to their health plan or community organizations to create a plan,
 - Meet with community organizations such as Ivy Tech,
 - Complete preparation paperwork, sign up for classes, etc.

Member Friendly Resources



Gateway to Work website – <https://www.in.gov/fssa/gateway/>

- **Searchable database** – Find partners, provide volunteer opportunities and High School Equivalency programs.
- **Gateway to Work assessment tool and recommendations** – Provide general guidance on how a member might meet Gateway to Work hours and what resources are available to help them.

Health Plan – Available via toll free phone lines

- **Education, Communications and Assistance** - to any member who can't utilize web based resources.
- **Assessment or additional assistance** - Members can call health plan to take the online assessment and will be offered additional assistance.

Reporting Hours – <https://fssabenefits.in.gov>

- **On-line reporting tool** – can be used on computer or smart phone.
- **Phone reporting** – members can call health plan to report hours.

Member Communications



- **Emails from FSSA** – May 15, Aug. 15, Nov. 12, Dec. 15, Jan 8
- **Postcard from FSSA** – September 15
- **Eligibility Notice**
 - Notices mailed last week of November 2018 and first week of April 2019 to all HIP members
 - Listed members current Gateway to Work Referral Status (Exempt, Reporting Met, or Reporting)
- **Health Plan Letters**
 - Letters mailed mid-November and February
 - To educate members about Gateway to Work and advise them to contact health plan for any questions or assistance.
- **Monthly Status** – Gateway to Work status will be included on monthly POWER Account statement starting in March 2019.

Member Communications



An email communication layout. At the top left is a circular icon of a worker in a hard hat. To its right is the text "GATEWAY TO WORK" and a paragraph: "In the next 10 years, Indiana expects to need some 1 million workers to fill jobs. Gateway to Work helps HIP members connect with job training and education or find the right job or volunteer activity. Whether you're looking for a job or place to volunteer, a better-paying job or new skills, Gateway to Work can help." Below this is a section titled "STARTING NEXT YEAR" with a paragraph: "Some HIP members will be required to work, go to school, volunteer or participate in other qualifying Gateway to Work activities up to 20 hours a week for at least eight months a year." To the right of this text is a circular icon of a person. At the bottom left is a play button icon and the text "WATCH THE GATEWAY TO WORK VIDEO". At the bottom center is the HIP logo. Below the HIP logo is a circular icon of a worker in a hard hat. To its right is the text "INDIANA IS AT THE ONSET OF A JOB EXPLOSION!" and a paragraph: "In the next 10 years, we expect to need some 1 million workers to fill jobs. Gateway to Work helps HIP members connect with job training and education or find the right job or volunteer activity. Whether you're looking for a job or place to volunteer, a better-paying job or new skills, Gateway to Work can help." At the bottom right is a red button with the text "LEARN MORE".

A postcard communication layout. On the left is a vertical orange bar with the text "GATEWAY TO WORK" in white. Below this is a paragraph: "In the next 10 years, we will need more than 1 million workers to fill jobs. Gateway to Work helps connect HIP members with job training, education or volunteer activities and can even help them find the right job. Whether you're looking for a job or place to volunteer, a better-paying job or new skills, Gateway to Work can help." Below this paragraph are the HIP logo and the Gateway to Work logo. On the right is a yellow background with the text "Indiana is experiencing a jobs explosion!" in orange. Below this is a circular icon of a woman wearing a headset. To its right is a speech bubble with the text "HIP can help you work, learn or serve!". At the bottom right is the HIP logo and the Gateway to Work logo.

A postcard communication layout. At the top left is the HIP logo. To its right is the Gateway to Work logo. Below this is a paragraph: "To help Indiana build a healthy workforce, the Gateway to Work program will require able-bodied HIP members, with some exceptions, to work, go to school, volunteer or participate in other qualifying activities." Below this paragraph is a list of bullet points: "Starting in 2019, Gateway to Work participation requirements will gradually increase from five hours per week initially up to 20 hours per week." "Gateway to Work will help refer members to available jobs, job training programs, educational opportunities or other community engagement opportunities. Members can receive case management services, gain access to job readiness support, receive assistance with their job search and link to volunteer and educational opportunities." "HIP members will receive more information on Gateway to Work from the state and their health plan before the end of the year." At the bottom is a row of colorful icons representing diverse people.

Emailed to HIP members – Emailed in May 2018 and August 2018
Postcard to HIP members – Mailed Sept. 2018

Member Communications



<Date>

<Member Name>
<Member Address>

Dear <Member>,


This letter includes important information about a part of the Healthy Indiana Plan called Gateway to Work. Read this letter carefully so you understand how your HIP coverage could be impacted by changes to Gateway to Work starting next year.

What is Gateway to Work?
Gateway to Work is a part of the Healthy Indiana Plan (HIP). It connects HIP members like you with ways to look for work, train for jobs, finish school and volunteer. Starting in 2019, you might be required to do Gateway to Work activities to keep your HIP benefits. If you are required to participate, you will need to work, volunteer, go to school or participate in other qualifying activities for a certain number of hours each month and report them to FSSA. You will need to meet the required monthly hours 8 out of 12 months of the year to keep your HIP benefits.

What kinds of activities can I do?
Many activities count for Gateway to Work. Gateway to Work groups activities into three categories—Work, Learn and Serve—as shown here:

Work	Learn	Serve
<ul style="list-style-type: none"> • Employment • Job search activities • On-the-job training • Homeschooling your children 	<ul style="list-style-type: none"> • Adult education (GED/HSE) • College courses • General education classes • Job skills training • Vocational education 	<ul style="list-style-type: none"> • Volunteer work • Public service • Caregiving services

How many hours do I need to do each month?
The number of required activity hours will increase on a set schedule. This is to give you time to learn



Gateway to Work
Indiana Family and Social Services Administration

PO Box 1810
Marion, IN 46952

Phone/Fax: 1-800-403-0864

Payee Name : <Payee Name>
Case Number : <Case Number>
AG Number : <AG Number>
Program : <Program Name>
Mailing Date : <Mailing Date>

Important Information about the Gateway to Work Program

Dear <Payee Name>,

Gateway to Work is a part of the Healthy Indiana Plan that connects HIP members with job training and search assistance, education, community engagement or work opportunities. Whether you're looking for a job or place to volunteer, a better-paying job or new skills, Gateway to Work can help. Starting in 2019, some HIP members will be required to work, go to school, volunteer or participate in other qualifying Gateway to Work activities.

Gateway to Work Status: Do I have to do something for Gateway to Work?

Any HIP member can participate in the Gateway to Work program but some are required to participate. Based upon the information the state has on file, a status has been assigned to you (see box below). Every HIP member has one of the following status assignments:

Exempt – Exempt members are not required to participate for as long as they remain exempt.

Reporting met – Meeting members already work at least 20 hours per week. You are not required to do anything new for Gateway to Work unless you report a change in employment to the Division of Family Resources.

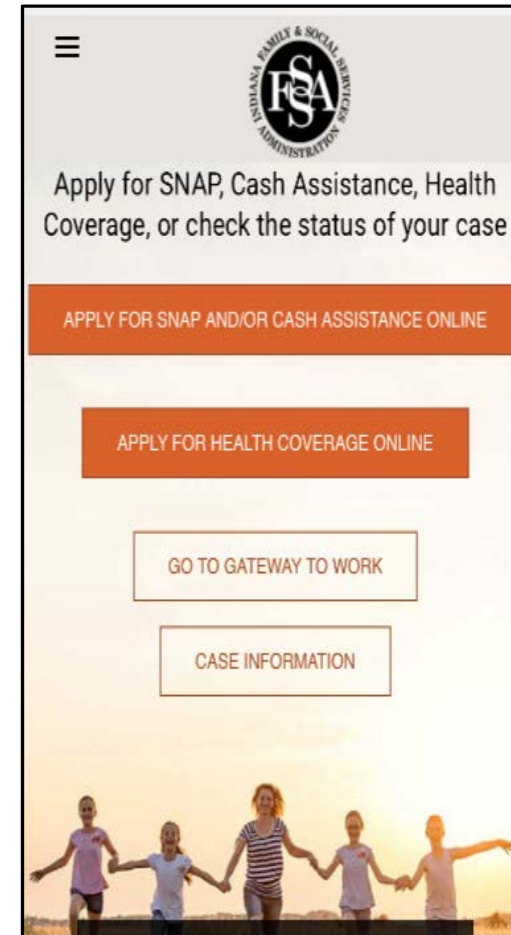
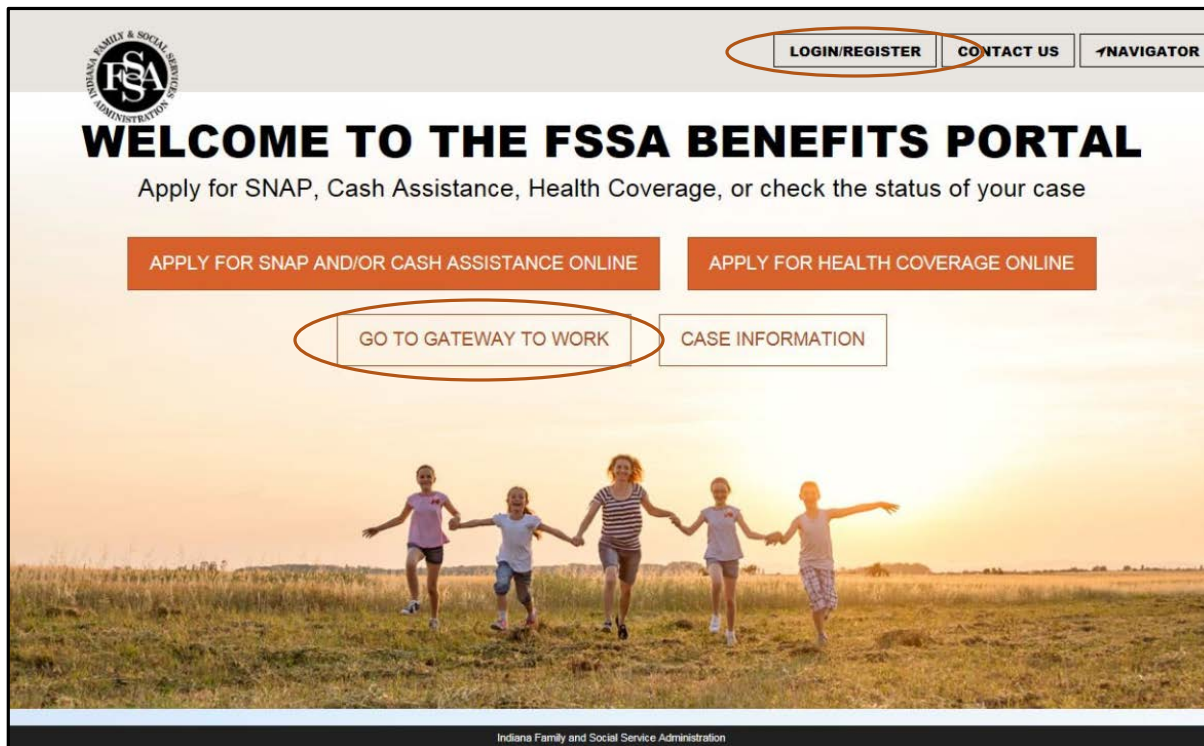
Health provider – Letter mailed week of Nov. 12, 2018 and Feb. 2019

FSSA Notices – Status Notice mailed week of Nov. 28-Dec. 5, 2018 and April 5-15, 2019

FSSA Benefit Portal



FSSA Benefit Portal Update



Gateway to Work Hours entry mobile version

FSSA Benefit Portal

Member enters qualifying activity hours online

WORK

- Employed
- Self-Employed
- Homeschooling
- Job Search Activities
- On-the-Job Training and Education
- Other

LEARN


- College Education
- English as a Second Language
- General Education
- High School Equivalency (HSE)
- Job Skills Training and Vocational Ed.
- Other

SERVE

- Caregiving Services
- Community Service
- Volunteer Work
- Other

[Hours Summary for Year](#) / [Hours Summary for Month](#) / [Add Activity Hours](#)


Add Activity Hours

Date *
09/01/2018 

Category:* Activity:*

City *
Indianapolis Activity Location *
St. Vincent de Paul

Hours *
1.5

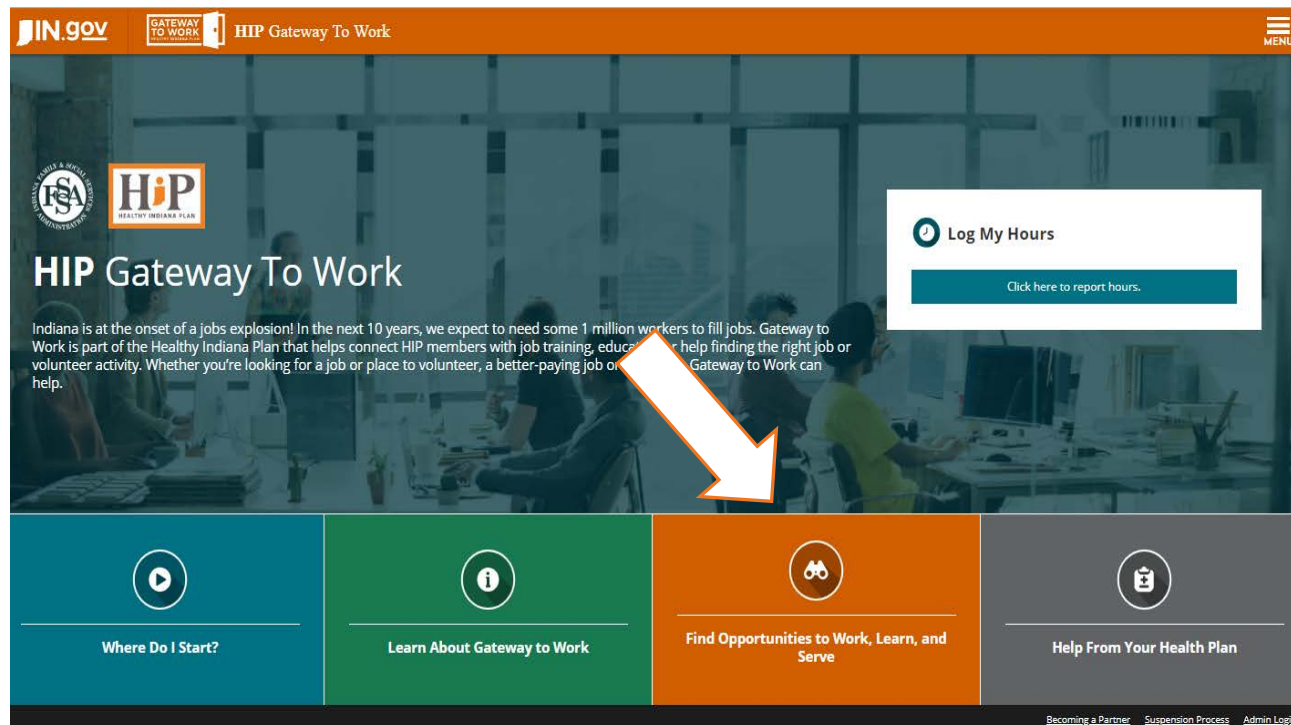
Description
500 / 500 

+ ADD ACTIVITY DOCUMENT

Website



Gateway to Work website – Desktop and mobile versions – searchable database



Partner Database Search



A screenshot of the Gateway To Work search interface. The page has an orange header with "IN.gov", "GATEWAY TO WORK", and "HIP Gateway to Work" on the left, and a "MENU" icon on the right. The main content area is split into two columns. The left column has a dark blue background with the text "Find Opportunities to Work, Learn, and Serve" and a paragraph of introductory text. The right column contains a search form with a location input field (with a "Use my location" button), six filter options (each with an unchecked checkbox), and a "View All Opportunities" button at the bottom. Three orange callout arrows point to the "Use my location" button, the "Find a Computer to Use" filter, and the "View All Opportunities" button.

Partner Database Results



IN.gov **GATEWAY TO WORK** **HIP Gateway to Work**

Search Results - 4 Locations Found

[← SEARCH AGAIN](#)

Gateway to Work Community Organizations operate independently of FSSA. FSSA does not screen or monitor them. You can ask Gateway to Work Community Organizations for materials about how they can help you.

Job skills training and vocational education

Ivy Tech - Indianapolis - Distance 2.5mi

★ PRIORITY PARTNER | PARTNER

Description:
We embrace our vision of economic transformation inspired by the education and earnings attainment of our citizens, the vitality of our workforce, and the prosperity of our unique and diverse communities.

Address: 50 W Fall Creek Parkway N Dr. Indianapolis, IN 46208	Hours of Operation: Monday - Thursday: 8:30am - 5:00pm Friday: 9:00am - 5:00pm	Counties Served: Boone, Hamilton, Hancock, Hendricks, Johnson, Marion, Morgan, Putnam, Shelby
--	---	---

Organization Email: gatewaytowork@ivytech.edu	Website: https://www.ivytech.edu/GTW	Phone Number: (877) 270-4155	County: Marion
---	--	--	--------------------------

Website



Gateway to Work website with member assessment

A screenshot of the Gateway to Work website homepage. The page has a dark blue header with the "IN.gov" logo, the "GATEWAY TO WORK" logo, and the text "HIP Gateway To Work". A "MENU" icon is in the top right. The main content area features the "HIP Gateway To Work" title, a paragraph of text about the program, and a "Log My Hours" button with a sub-link "Click here to report hours.". Below this is a navigation bar with four colored buttons: "Where Do I Start?" (teal), "Learn About Gateway to Work" (green), "Find Opportunities to Work, Learn, and Serve" (orange), and "Help From Your Health Plan" (grey). A large white arrow with an orange outline points to the "Where Do I Start?" button. At the bottom right, there are links for "Becoming a Partner", "Suspension Process", and "Admin Login".

Online Assessment Questions

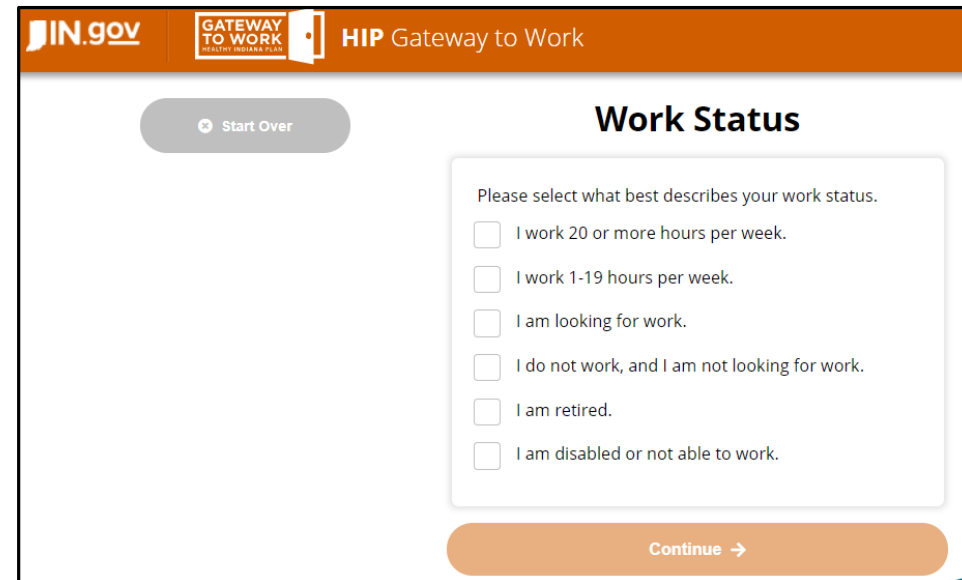


7. Work Status: Please select what best describes your work status.

Work Status:	
I work 20 or more hours per week.	<input type="checkbox"/>
I work 1-19 hours per week.	<input type="checkbox"/>
I am looking for work.	<input type="checkbox"/>

Work Status:	
I do not work, and I am not looking for work.	<input type="checkbox"/>
I am retired.	<input type="checkbox"/>
I am disabled or not able to work.	<input type="checkbox"/>

Employment Interest:	Yes	No
7.a: Do you feel you are ready to work and have the skills you need to find a job?	<input type="radio"/>	<input type="radio"/>



Online Assessment Results



IN.gov **GATEWAY TO WORK** **HIP Gateway to Work**

[Start Over](#)

Your Results

Thank you for completing the Gateway to Work assessment!
Here are your results based on your answers:

What Gateway To Work activities might be right for me?

You might like to take technical or certification classes.

- NextLevelJobs offers free training for people who qualify. Click here to sign up for NextLevelJobs. <https://www.nextleveljobs.org/>
- You can report Gateway to Work hours for class, study, and travel time.

You can do volunteer activities and report them as Gateway to Work hours.

- Click here to see a list of volunteer opportunities. <https://secure.in.gov/apps/fssa/gateway/search/>

Gateway To Work Status

Your Gateway to Work status may be Reporting. You must do qualifying activities to meet Gateway to Work.

What do I already do that counts for Gateway To Work?

You are already doing activities that you can report for Gateway to Work in the FSSA Benefits Portal or to your health plan:

You are looking for work.

Where can I get more information?

Your Gateway to Work status is on your monthly POWER Account statement.
You can also find your Gateway to Work status or report activities:

- Log on to the FSSA Benefits Portal at <https://fssabenefits.in.gov/CitizenPortal/application.do>
- Call your health plan at the number below.

Community Organizations and Partners




Gateway to Work is working with:

- Nonprofits, religious organizations, government agencies and businesses
- To identify existing computer access, volunteer opportunities and programs
- To help HIP members easily locate local programs, services, and resources and meet the Gateway to Work program.

Community Organizations and Partners



To be part of the Gateway to Work program, organizations can fill out a one-page form with their programs and resources. The form can be found at: <https://www.in.gov/fssa/hip/2591.htm>



Healthy Indiana Plan (HIP) **Gateway to Work** program will start January 2019 with HIP members' first participation hours starting in July 2019. In order to prepare and help HIP members find opportunities to work, learn, or serve, the Gateway to Work program will launch a searchable database including **Gateway to Work Community Organizations** in January 2019. The database will include non-profits, religious organizations, government agencies, and businesses with existing programs and services who want to help HIP members easily locate local programs, services, and resources and meet the Gateway to Work program.

If your organization is interested in working with HIP members on the Gateway to Work program and being part of this database, please fill out the information below and email this form to FSSA.GatewayToWork@fssa.in.gov.

Please tell us about your organization:

Organization's Name:

Address: City, State, Zip:

Website:

Organization's Phone: Organization's Email:

Days and Hours of Operation (if applicable):

Submit the community organizations form: FSSA.GatewayToWork@fssa.in.gov

Community Organization and Partners



Organization's programs and resources will appear in the follow format as a result of a Gateway to Work searchable database search.

Ivy Tech - Indianapolis - Distance 2.5mi ★ PRIORITY PARTNER | PARTNER

Description:
We embrace our vision of economic transformation inspired by the education and earnings attainment of our citizens, the vitality of our workforce, and the prosperity of our unique and diverse communities.

Address: 50 W Fall Creek Parkway N Dr, Indianapolis, IN 46208	Hours of Operation: Monday - Thursday: 8:30am - 5:00pm Friday: 9:00am - 5:00pm	Counties Served: Boone, Hamilton, Hancock, Hendricks, Johnson, Marion, Morgan, Putnam, Shelby
---	---	---

Organization Email: gatewaytowork@ivytech.edu	Website: https://www.ivytech.edu/GTW	Phone Number: (877) 270-4155	County: Marion
--	--	--	--------------------------

Contact Information and Resources



Gateway to Work Contacts:

- General questions or to submit the community organizations form: FSSA.GatewayToWork@fssa.in.gov
- Coordinator: Allison Taylor, Allison.Taylor@fssa.in.gov

Gateway to Work Website:

- HIP.IN.gov and click on Gateway to Work Member Site to Enter Hours (FSSA Benefit Portal)
- <https://fssabenefits.in.gov>