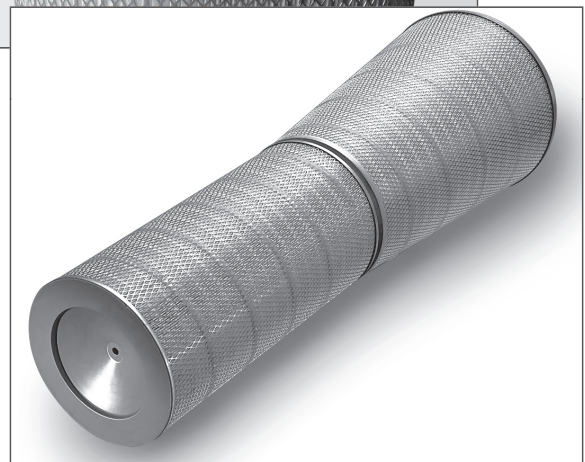




Pneuma-Pulse Cross Flow Cartridges Tripod Mount or Twist Lock



Description

Specially designed for pulse type gas turbine air inlet systems designed by Pneumafil. Systems are designed for a mating pair of cartridges, one cylindrical and one conical. The cartridge pair is easily mounted in the inlet system by fitting them over a permanent tripod assembly mounted on the dirty air side of the inlet air plenum and securing them with a nut and washer. If using twist lock cartridges which allow installation without tools or hardware, a simple twisting motion provides proper compression of the gasket and locks the unit in place.

Construction

- The pleated media pack is supported by cylindrical inner and outer cores of flattened expanded galvanized or stainless steel.

- Pleats are stabilized by bonding the media to cores with a spiral of hot-melt adhesive on both inner and outer cores.
- Media and cores are bonded to the end caps with either polyurethane, epoxy, or plastisol sealant. A seamless polyisoprene sponge rubber gasket is bonded to the end cap of each cartridge.
- Available in all galvanized or stainless steel.

Test	Cellulose polyester blend	100% synthetic	Blended with Matrex™	100% synthetic with Matrex
Rated Flow per set (CFM)	1533	1533	1533	1533
Clean Resistance (inches W.G.)	0.76	0.78	0.85	0.71
Avg. atmospheric dust spot efficiency %	98.8	98.0	99.6	99.7
Avg. SAE fine dust weight arrestance %	98.8	99.9	99.9	99.9



Pneuma-Pulse Cross Flow Cartridges Tripod Mount or Twist Lock

Dimensions / Part Nos. for Replacement Filter Pairs

Cylindrical OD 12.75" (324 mm), ID 8.38" (213 mm), L 26" (660 mm)

Conical OD 12.75" (324 mm) x 17.5" (445 mm), L 26" (660 mm)

	Part No.	Media	Construction	Comments
Tripod Mount	S52030C1 S52029C1	Blended	Galvanized	Conical cartridge, open/open Cylindrical cartridge, open/closed
	S52417C1 S52418C1	Blended	Stainless steel	Conical cartridge, open/open Cylindrical cartridge, open/closed
	S52030C3 S52029C3	100% Synthetic	Galvanized	Conical cartridge, open/open Cylindrical cartridge, open/closed
	S52417C3 S52418C3	100% Synthetic	Stainless steel	Conical cartridge, open/open Cylindrical cartridge, open/closed
	S52325C1 S52324C1	Blended with Matrex™	Galvanized	Conical cartridge, open/open Cylindrical cartridge, open/closed
	S52419C1 S52420C1	Blended with Matrex	Stainless steel	Conical cartridge, open/open Cylindrical cartridge, open/closed
	S52382C1 S52381C1	100% synthetic with Matrex	Galvanized	Conical cartridge, open/open Cylindrical cartridge, open/closed
	S52421C1 S52422C1	100% synthetic with Matrex	Stainless steel	Conical cartridge, open/open Cylindrical cartridge, open/closed
Twist Lock	S52065C1 S52066C1	Blended	Galvanized	Conical cartridge, open/open Cylindrical cartridge, open/closed
	S52423C1 S52424C1	Blended	Stainless steel	Conical cartridge, open/open Cylindrical cartridge, open/closed
	S52065C3 S52066C3	100% Synthetic	Galvanized	Conical cartridge, open/open Cylindrical cartridge, open/closed
	S52423C3 S52424C3	100% Synthetic	Stainless steel	Conical cartridge, open/open Cylindrical cartridge, open/closed
	S52065C4 S52066C4	Blended with Matrex	Galvanized	Conical cartridge, open/open Cylindrical cartridge, open/closed
	S52423C4 S52424C4	Blended with Matrex	Stainless steel	Conical cartridge, open/open Cylindrical cartridge, open/closed
	S52065C5 S52066C5	100% synthetic with Matrex	Galvanized	Conical cartridge, open/open Cylindrical cartridge, open/closed
	S52423C5 S52424C5	100% synthetic with Matrex	Stainless steel	Conical cartridge, open/open Cylindrical cartridge, open/closed