

Nederman

MCP-GO

Compact plug and play welding fume extractor



A complete industrial air filtration solution



Convenient and compact fume extractor for today's needs

With investments in welding automation and advanced machinery on the rise, Nederman's MCP-GO is an all-in-one fume extraction system for manufacturers. The MCP-GO offers advanced filtration technology in a simple, quick to install and easy-to-use package and provides reliable, clean air solution for manual welding, welding robot or cobots and thermal cutting processes.

Building off Nederman's industry leading MCP SmartFilter technology, the MCP-GO offers a new, more convenient and more cost-effective solution to protect people, production and planet.



Convenience

MCP-GO is delivered fully assembled and ready to deliver clean air

- Pre-wired controls and fan makes for fast and easy installation
- Small footprint and single side access saves valuable floorspace
- Easy to relocate or adapt to process changes with quick fit ducting
- Standard silencer chamber keeps noise low when placed proximate to process



Versality

Two available models, controls options and installation flexibility allows the MCP-GO to be applied to a variety of processes and industries

- Manual, robotic or cobot welding applications
- Thermal cutting processes like plasma or laser cutting
- Optional Smart controls allow performance monitoring improving maintenance



Capability

MCP-Go will deliver clean air at minimum cost

- Design based on proven MCP SmartFilter, and backed by 80-years experience
- Durable metal construction provides robust design for tough environments
- Nanofiber Fire Retardant cartridges provide high filtration efficiency

Engineered for a Wide Range of Industrial Applications

The MCP-GO is engineered to capture and filter thermally generated fumes from various welding and thermal cutting processes. Nederman's experts evaluate your production setup to help select the configuration that best meets your needs.

Manual welding

Ideal for manual welding setups using extraction arms, cross-draft, or overhead hoods, the MCP-GO can support up to five welding stations.

Automated welding

For robot and cobot applications, the MCP-GO offers a compact and flexible solution. When paired with a modular hood, it can support hood sizes from 5 ft x 5 ft (1,5 m x 1,5 m) to 10 ft x 15 ft (3 m x 4,5m), depending on the required coverage for the application and the total open area in the welding curtains.

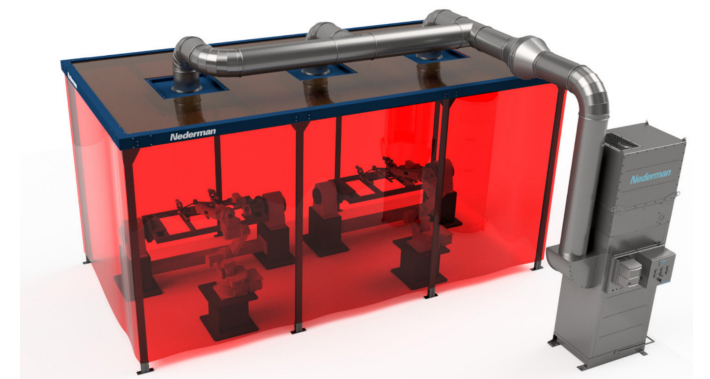
Thermal cutting

The MCP-GO can be directly mounted to thermal cutting machines and workstations, making it a practical solution for laser and light plasma cutting processes.

Worker and facility safety

According to the International Agency on Cancer Research (IARC), all weld fume is considered a Class 1 carcinogen. Managing worker exposure to thermally generated fumes is essential to a safe and productive plant. The risk of fires within spark generating processes also must be managed.

The MCP-GO and the complete systems that Nederman offers focus on compliance, mitigating risk and worker health and safety.



Did you know?

Fume extraction systems may be susceptible to fires started from sparks generated within the thermal process. Spark deterrence and proper maintenance help to reduce the risk.

Take control of your weld fume extraction



Smart Design, Reliable Operation

The MCP-GO is thoughtfully designed to support the everyday demands of industrial fume extraction. Its user-centric features ensure a convenient experience, from installation to maintenance, while meeting the functional and safety needs of modern production environments. Compact, durable, and efficient, it delivers performance where it matters most.

Flexible inlet solutions
The back inlet helps minimize floor space usage by allowing flexible duct routing. An internal pre-separation plate distributes airflow evenly and protects the filters from sparks.

Pre-wired fan and controls
The filter and fan controls arrive assembled and pre-wired. Connect the main power source and system is ready to go!

Squirle filter design
Patented filter design enhances filtration efficiency through increased filter capacity and effective filter cleaning. Twist and lock filter endcap enhances seal and simplifies maintenance.

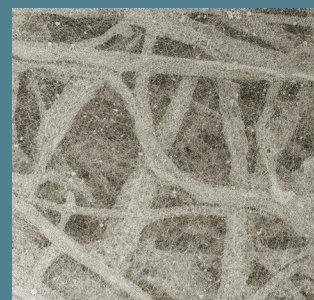
Large capacity dust tray
17 gal (65 l) dust tray with simple to operate locking and sealing mechanism.

Vertical clean air outlet
Clean air is exhausted straight up from the MCP-GO away from operations avoiding disruption and reducing noise levels. Allows for ducted exhaust connection.

High performance fan
Heavy duty, high capacity and efficiency fan delivers robust airflow for continuous, effective fume extraction.

Integral Silencer
Acoustical foam lined silencer encloses the fan and filter cleaning system to reduce operational noise levels to below 75 dB(A).

Durable metal onstruction
Heavy gauge steel construction with galvanized coating.



Advanced filter technology

The Nederman proprietary squirle cartridge design features highly efficient flame-retardant, Nanofiber filter media, permitting higher air-to-cloth ratios and more effective pulse cleaning.

- Reduced energy consumption
- Reduced emissions
- Extended filter life
- Smaller footprint

Multiple models

The MCP-GO is offered in two distinct models to accommodate a variety of industrial needs. Whether your application requires higher airflow, increased pressure, or specific handling of different fume-generating processes, there's a version designed to match.



Both models feature the same compact footprint, making them easy to integrate into space-constrained environments, and are built on the same advanced filtration technology. Regardless of the model selected, users benefit from consistent performance, efficient filter cleaning, and reliable protection for operators and equipment.

Intelligent Controls with Insight Panel & VFD – Standard



The MCP-GO features a simplified Insight control panel with a touchscreen interface for local control, remote access, and system monitoring. Standard configuration includes a VFD for energy-efficient fan control, Intellipulse™ filter cleaning, and real-time system performance tracking. The VFD and built-in pressure transmitters maintain set pressure by adjusting airflow as needed, improving efficiency, lowering noise, and reducing fan wear.

An optional fieldbus module enables SCADA integration via Ethernet/IP, Modbus TCP, Profibus, Profinet, or BACnet/IP.

Technical data

MCP-GO Model	Filter Quantity	Filter Area		Maximum Airflow		Fan Motor Size		Power Supply	Approximate Dimensions						Weight	
		ft²	m²	cfm	m³/h	HP	kW		Height		Width		Depth		lbs	kg
									in	cm	in	cm	in	cm		
MCP-GO-2-6SL	6	543	50.4	1,800	3,058	7.5	5.6	230 - 460 V / 60 Hz / 3 PH	91	232	40	102	45	115	725	329
MCP-GO-2-6S		853	79.2	2,800	4,757	10	7.5		115	292					833	378

- Intended for indoor installation and operation
- Not suitable for use with explosive dusts or within explosive atmospheres
- System is CE marked
- Nanofiber FR Filter Media Certifications: ISO 16890 ePM1 80%, EN 60335-2-69:2015 Class M & ASHRAE 52.2 MERV 14

A solution that is tailored to your needs

Complete clean air solutions

Nederman offers a wide range of options and accessories to build a complete fume extraction and filtration system. We provide extraction arms or local containment hoods to capture the fume and then a full range of quick fit, clamp together duct to convey the fume to the MCP-GO. Safety accessories like the in-line spark arrestor seamlessly connects into the duct system and deterring sparks.

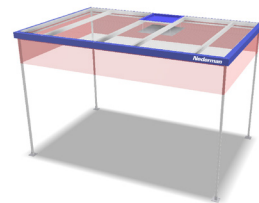


Extraction Arms

Enhanced design with improved motion control, extended airflow and temperature range for more demanding fume and dust applications.

Modular Hoods

Local containment hoods for manual or robotic weld stations that contain and capture fume. A variety of mounting options and sizes allow hoods to be catered to your process.

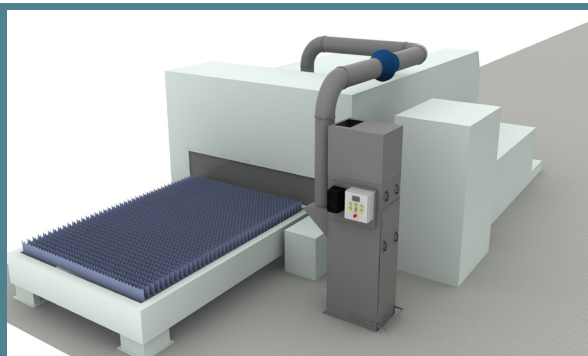


Spark Arrestor

Installed in ducting, the Nordfab Inline Spark Arrestor reduces the possibility of fire in collectors by decreasing the number of sparks which could reach the collector through the ductwork.

Quick Fit Duct

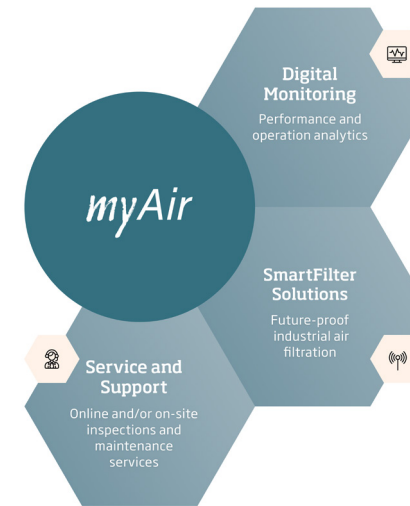
Complete range of Quick-Fit (QF) duct and fittings for building complete extraction systems. QF duct offers installation savings, improved maintenance, and future flexibility.



ProQuote - Nederman 3D design tool

Nederman utilizes ProQuote, a state-of-the-art 3D design tool, to quickly prepare accurate solutions that meet specifications, are energy efficient and compliant with local regulations. It also helps manufacturers to gain a clear understanding of the system, its installation process and operation.

Smart approach to service



The MCP-GO offers advanced controls package that supports digital monitoring through the Nederman Insight cloud-based platform. Sensors on key components and the process helps manufacturers avoid costly downtime, improve maintenance, and drive safety of your fume extraction solution.



Need a little more extraction power?

Some applications require additional filtration capacity, accessories or configuration than is available with the MCP-GO. Nederman's MCP SmartFilter is a modular cartridge dust collector suitable for filtering fume and combustible dust in an effective and safe manner. It's a fully flexible, configurable solution, with wide range of filter medias, options and accessories and thus capable of being applied to much wider range of industrial processes.

The MCP SmartFilter is installed in thousands of industrial applications serving a wide range of applications including welding, metal working, food processing, bulk powders, abrasive blasting and more.



MCP SmartFilter provides combustible dust compliance

Fire or explosions resulting from combustible dust pose a significant risk to the safety of your employees and facility. Therefore, it is important to select a partner that is experienced in handling these applications and a solution that complies with the latest ATEX and NFPA standards. Additionally, our comprehensive turn-key approach in the system design, installation and service offerings set us apart to keep you operating in a safe and efficient manner.





Nederman

The Clean Air Company

Nederman is an environmental technology company and a global leader in industrial air filtration dedicated to extracting, transporting and cleaning air to make industrial production more efficient, safe and sustainable. Based on industry leading products, solutions and services in combination with innovative IoT technology, we monitor and optimize performance and validate emissions compliance to protect people, planet and production.

nederman.com