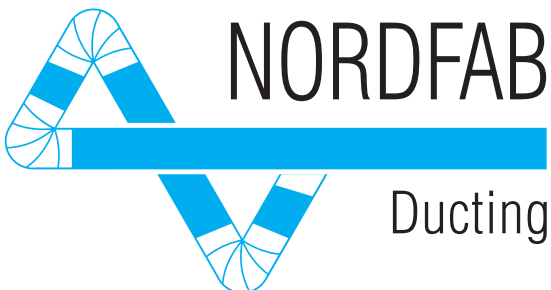
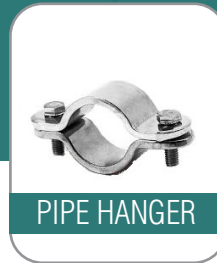
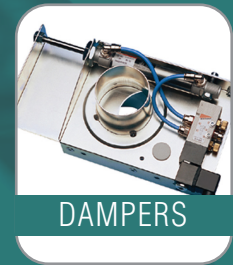


HIGH VACUUM PRODUCT CATALOGUE

VERSION 1:2026, ENGLISH

All the ducting components needed for process ventilation, dust collection, and fume extraction systems.

- Galvanised
- Stainless steel



www.nordfab.com

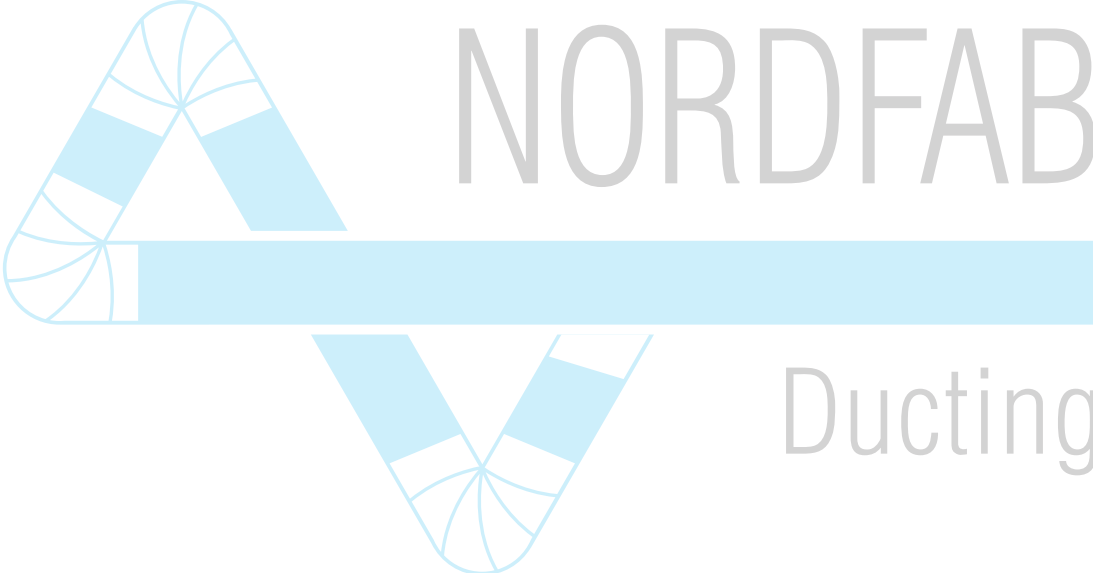


Table of Contents

INTRODUCTION		4
	The world's fastest ducting	4
	General conditions of sale	5
	Sizing Nordfab Ducting Systems	6
NORDFAB HIGH VACUUM (HV) DUCT SYSTEM		7
HV PIPE & COUPLINGS		8
	Pipe HV	8
	Pipe Coupling HV	8
	Eurac HL Pipe Coupling	8
HV BENDS		9
	Reinforced Steel Bends HV 90°	9
	Reinforced Steel Bendd HV 45°	9
	Bend Extended HV 90°	9
	Bend Extended HV 45°	9
	Bend HV	10
HV BRANCHES		11
	Branch Extended HV 45°	11
	Branch Pipes HV 45°	11
	Y-Branch Extended HV 45°	12
	Branch Pipes Parallel HV	12
	T-Pipe HV 90°	12
	Reinforced Branch HV 45°	12
HV ADAPTERS		13
	Reducer HV	13
	Reducer Extended HV	13
	Reducer Eccentric HV	13
	End Cap HV	13
HV HOSE & CLAMPS		14
	Rubber Hose HV	14
	Hose Clamp HV	14
	Leaf Valve Manual HV MDKB	15
	Leaf Valve HV MDKM	15
	Hose Connector HV MDKS	15
	Flap Valve HV	16
	Hose Coupler, swivelling	16
HV DAMPERS		17
	SBBA Manual Damper HV	17
	SBBB Automatic Damber HV	17
HV HANGERS & INSTALLATION PRODUCTS		18
	Beam Clip HV	18
	Pipe Clamp HV	18
	Universal Bracket HV	18
	Universal Wall Bracket HV	19
	Channel Nut M8 with Short Spring HV	19
	Pipe Hanger HV	19
	Cable for Grounding	19



The world's fastest ducting

Nordfab is a leading manufacturer of modular ducting systems, trusted across the world for delivering efficient solutions in industrial air filtration and material handling. With decades of experience, Nordfab combines innovation with reliability, offering products that meet the highest standards of performance and safety. We have sales and manufacturing facilities in the USA, Denmark, the UK, Thailand, and Australia, and our ducting solution is an integral part of process ventilation, dust collection, and fume extraction systems for industries around the world.

High vacuum solutions for demanding applications

Our High Vacuum (HV) ducting range is engineered for applications requiring exceptional suction power and durability. Designed for environments such as welding fume extraction, grinding dust collection, and heavy-duty cleaning systems, these components withstand high negative pressures and abrasive materials. The system includes robust pipes, bends, branches, and accessories, all manufactured from galvanised or stainless steel to ensure long service life even under extreme conditions.

Efficiency meets flexibility

Nordfab's High Vacuum (HV) ducting system is modular, enabling quick assembly and easy reconfiguration as your needs evolve. Whether you operate in metalworking, woodworking, or other demanding industries, our High Vacuum (HV) solutions deliver the reliability and adaptability you need to keep your operations running smoothly.

Quality

We take great pride in servicing our customers with our promise of being **Fast**, **Friendly**, and **Reliable**. Our products are produced in an ISO-certified and process-oriented manufacturing environment. Nordfab is ISO 9001:2015 and ISO 14001:2015 certified, ensuring our dependability, quality, service, delivery, and minimum impact on the environment.



General Conditions of Sale

This is a summary of our General Conditions of Sale. Scan the QR code to read the full version.



General Conditions of Sale for Nordfab Europe.



General Conditions of Sale for Nordfab UK & Ireland.



Shipping and packaging

An additional charge for shipping and packaging may be applied.

Upon receipt of delivery

Please check the number of packages and that all components are intact before signing the waybill. If you are not completely satisfied with your order, please contact us.

Undamaged standard items should be returned in original packaging. 30% restocking charge apply. Delivery charges for returned items are to be paid by the customer.

Tracking goods

Please use the waybill number on your current bill to track goods.

Price, product and technology changes

We reserve the right to change our prices at any time. To ensure you have the latest product information, please check our website, www.nordfab.com.

Hours of operation

Weekdays 07:00 - 16:00 (EMEA)
Weekdays 08:00 - 16:30 (UK & Ireland)

Steel Mill certifications

Request for mill certificates must be requested in advance of order placement.

EMEA:	UK & Ireland only:
E-mail Order: salesdk@nordfab.com	E-Mail Order: sales@nordfab.co.uk
Phone Order: +45 86 47 11 00	Phone Order: +44 (0) 1132 739 400
Internet: www.nordfab.com	Internet: www.nordfab.com

Conditions for returning goods

Please contact us before returning goods. When returning goods, enclose a copy of the original invoice or delivery note. Returns without agreement and/or attached documents will not be credited.

Sizing Nordfab ducting systems

Nordfab offers assistance to customers who have never designed a ducting system. We can assist you with determining the correct duct size and

configuration for optimal air flow. Please call your local representative for assistance.

AIR VOLUME CHART

Ø mm	2 m/s	4 m/s	6 m/s	8 m/s	10 m/s	12 m/s	15 m/s	18 m/s	20 m/s	22 m/s	25 m/s	28 m/s	30 m/s	32 m/s	35 m/s
50	12.8	25.6	38.4	51.3	64.1	76.9	96.1	115.3	128.1	140.9	160.2	179.4	192.2	205.0	224.2
63	20.8	41.5	62.3	83.1	103.8	124.6	155.8	186.9	207.7	228.4	259.6	290.7	311.5	332.3	363.4
76	30.6	61.3	91.9	122.5	153.2	183.8	229.7	275.7	306.3	337.0	382.9	428.9	459.5	490.1	536.1
102	56.1	112.2	168.3	224.4	280.5	336.6	420.7	504.9	561.0	617.1	701.2	785.4	841.5	897.6	981.7
127	86.9	173.9	260.8	347.8	434.7	521.7	652.1	782.5	869.5	956.4	1086.9	1217.3	1304.2	1391.2	1521.6
152	125.5	251.1	376.6	502.2	627.7	753.3	941.6	1129.9	1255.4	1381.0	1569.3	1757.6	1883.2	2008.7	2197.0
203	226.2	452.4	678.6	904.8	1131.0	1357.2	1696.5	2035.8	2261.9	2488.1	2827.4	3166.7	3392.9	3619.1	3958.4

AIR PRESSURE DROP CHART

Ø mm	Pressure drop (Pa) each meter duct c (m/s)				Pressure drop (mmH2O) each meter duct c (m/s)				Bend 90° Pressure drop (Pa) c (m/s)				Bend 90° Pressure drop (H2O) c (m/s)			
	15 m/s	20 m/s	25 m/s	30 m/s	15 m/s	20 m/s	25 m/s	30 m/s	15 m/s	20 m/s	25 m/s	30 m/s	15 m/s	20 m/s	25 m/s	30 m/s
50	73.9	127.4	195.3	277.3	7.5	13.0	19.9	28.3	28.6	50.9	79.5	114.5	2.9	5.2	8.1	11.7
63	54.5	94.1	144.1	204.3	5.6	9.6	14.7	20.9	28.4	50.4	78.8	113.4	2.9	5.1	8.0	11.6
76	42.7	73.7	113.0	160.5	4.4	7.5	11.5	16.4	28.1	49.9	78.0	112.3	2.9	5.1	8.0	11.5
102	29.3	50.6	77.6	110.2	3.0	5.2	7.9	11.2	27.8	49.4	77.3	111.2	2.8	5.0	7.9	11.3
127	22.3	38.6	59.2	84.1	2.3	3.9	6.0	8.6	27.5	49.0	76.5	110.2	2.8	5.0	7.8	11.2
152	17.8	30.8	47.2	67.1	1.8	3.1	4.8	6.8	27.3	48.5	75.8	109.1	2.8	4.9	7.7	11.1
203	12.4	21.5	32.9	46.8	1.3	2.2	3.4	4.8	27.0	48.0	75.0	108.0	2.8	4.9	7.6	11.0

Design & specification tools

Nordfab offers fast and friendly specification, installation design, and quoting tools for planning ducting installations.

NordCAD is our CAD-based tool to assist with designing Nordfab ductwork installations. NordCAD allows a CAD user to place 2D illustrations of Nordfab High Vacuum (HV) Ducting components into a CAD drawing. Nordfab dealers can access our quoting and ordering tool to quickly obtain pricing or place orders.

Revit Models, DWG, and STP files are available for our product codes for a seamless integration with Autodesk and Solidworks designs. Enhance your projects with our comprehensive digital resources.

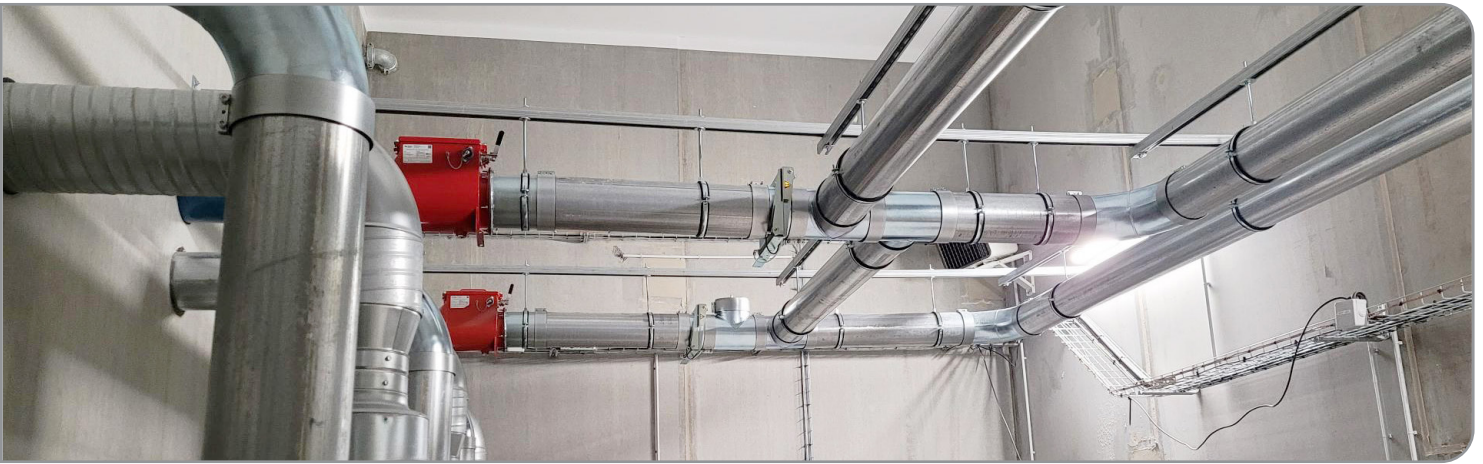


Scan the QR code to download our Revit Models, or contact us for additional support.

Nordfab High Vacuum (HV) Ducting System

Nordfab High Vacuum (HV) Duct Systems are used in applications in which the high vacuum and low airflow are being used to catch, transport, and filter fumes, dust, and other particles. These systems are designed to ensure optimal air quality, precision, and efficiency, making them a robust solution for

maintaining a clean and safe work environment. In addition to galvanised steel, Nordfab now offers our High Vacuum (HV) ductwork in 304 Stainless Steel as part of our standard product range. Products in 316SS are available upon request.



High Vacuum Applications

Nordfab's High Vacuum (HV) duct system includes all components needed for a complete and flexible extraction solution. Connections are made using couplings which seal securely. The High Vacuum (HV) ductwork systems are versatile and can be used in various applications across different industries. Here are some common applications:

- **Extraction of fumes:** Ideal for removing fumes from welding torches and other industrial processes.
- **Dust extraction:** Effective in capturing grinding dust directly from handheld grinding machines.
- **Cleaning:** Useful for cleaning floors and machines with a wide range of accessories.
- **Material transport:** Suitable for transporting large volumes of heavy and abrasive materials.

Benefits of Nordfab High Vacuum System

- **Durable construction:** Made from high-quality galvanised or stainless steel for long service life in demanding environments.
- **Modular & flexible:** Easy to modify or expand the system without major downtime or cutting/welding.
- **Leak-free connections:** Precision-engineered components ensure tight seals, minimizing energy loss and maintaining suction power.
- **High Efficiency:** Smooth interior surfaces prevent dust buildup, optimizing airflow and energy efficiency.
- **Corrosion resistance:** Stainless steel options available for harsh or corrosive environments.
- **Reusable components:** Parts can be easily disconnected and reused, lowering long-term costs.
- **Aesthetic & professional finish:** Clean, uniform appearance suitable for modern industrial facilities.

PIPE & COUPLING FOR HIGH VACUUM DUCT SYSTEMS

Nordfab High Vacuum (HV) pipe, connectors, and couplings, for air contaminant collection where high vacuum and low airflow are required. The term "high vacuum" refers to the high vacuum and low airflow used to catch, transport, and filter fumes, dust, and other particles.

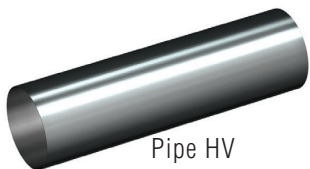


Scan the QR code for all HV Pipe & Coupling item numbers.

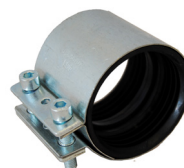
PIPE HV					
Ø mm	Length mm	Material	Thickness mm	Weight kg	Item Number
50	3000	Galv	1.2	5.5	40130440
63	3000	Galv	1.2	5.7	40130420
76	3000	Galv	1.2	5.55	40130400
102	3000	Galv	1.2	8.8	40130380
127	3000	Galv	1.5	14	40130360
152	3000	Galv	1.5	16.5	40130340
203	3000	Galv	1.5	22	40130320
50	6000	Galv	1.2	8.66	40130450
63	6000	Galv	1.2	11.3	40130430
76	6000	Galv	1.2	11.1	40130410
102	6000	Galv	1.2	17.7	40130390
127	6000	Galv	1.5	27.96	40130361
152	6000	Galv	1.5	32.96	40130350
203	6000	Galv	1.5	44.06	40130330
50	3000	304SS	1.2	5.5	8210005128
63	3000	304SS	1.2	5.5	8210005130
76	3000	304SS	1.2	5.6	8210005132
102	3000	304SS	1.5	8.8	8210005134
127	3000	304SS	1.5	9.3	8210005136
50	6000	304SS	1.2	10.9	8210005129
63	6000	304SS	1.2	11	8210005131
76	6000	304SS	1.2	11.1	8210005133
102	6000	304SS	1.5	17.5	8210005135
127	6000	304SS	1.5	18.6	8210005137

PIPE COUPLING HV				
ØA mm	Material	Weight kg	Length mm	Item Number
50	Galv	0.2	65	43884001
63	Galv	0.31	65	40139350
76	Galv	0.15	65	40139420
102	Galv	0.66	65	40139370
127	Galv	0.45	65	40139410
152	Galv	0.54	65	40139360
203	Galv	0.65	65	40139400
51	304SS	0.12	65	8210002213
63	304SS	0.15	65	8210002193
76	304SS	0.15	65	8210002194
102	304SS	0.15	65	8210002195
127	304SS	0.2	65	8210002196
152	304SS	0.25	65	8210002197
203	304SS	0.35	65	8210002198

EURAC HL HV PIPE COUPLING				
ØA mm	Material	Weight kg	Length mm	Item Number
50	Galv	0.69	150	8210005065
63	Galv	0.75	150	8210005066
76	Galv	0.83	150	8210005067
102	Galv	1.07	150	8210005068
127	Galv	1.2	150	8210005069
152	Galv	1.79	200	8210005070
203	Galv	2.18	200	8210005071



Pipe HV



Pipe Coupling HV



Eurac HL HV Pipe Coupling

BENDS FOR HIGH VACUUM DUCT SYSTEMS

Nordfab High Vacuum (HV) bends are available in 45 degree or 90 degree angles and used for air contaminant collection where high vacuum and low airflow are required. The term "high vacuum" refers to the high vacuum and low airflow used to catch, transport, and filter fumes, dust, and other particles.



Scan the QR code for all HV Bends item numbers.

REINFORCED STEEL BENDS HV 90°

Ø mm	Material	Thickness mm	Weight kg	X mm	Y mm	Item Number
63	MS	1.5	2.0	265	115	40134201
76	MS	1.5	4.0	550	320	82260471
102	MS	2.0	4.9	400	185	40134221



REINFORCED STEEL BENDS HV 45°

Ø mm	Material	Thickness mm	Weight kg	X mm	Y mm	Item Number
63	MS	1.5	1.5	185	35	40134301
76	MS	1.5	3.5	450	80	82260728
102	MS	2.0	3.8	260	45	40134321



BEND EXTENDED HV 90° CLR = 1.5 X D

Ø mm	Angle Degree	Material	Thickness mm	Weight kg	Item Number
50	90	Galv	2	0.78	40139611
63	90	Galv	2	0.99	40139612
76	90	Galv	2	1.52	40139613
102	90	Galv	2	3.12	40139614
127	90	Galv	2	3.69	40139615
152	90	Galv	2	6.88	40139616
203	90	Galv	2	6.25	40139617
50	90	304SS	2	0.78	40139597
63	90	304SS	2	0.99	40139598
76	90	304SS	2	1.52	40139599
102	90	304SS	2	3.12	40139600
127	90	304SS	2	3.69	40139601

BEND EXTENDED HV 45°

Ø mm	Angle Degree	Material	Thickness mm	Weight kg	Item Number
50	45	Galv	2	0.66	40139618
63	45	Galv	2	0.86	40139619
76	45	Galv	2	1.09	40139620
102	45	Galv	2	2.45	40139621
127	45	Galv	2	2.92	40139622
152	45	Galv	2	5.01	40139623
203	45	Galv	2	4.32	40139624
50	45	304SS	2	0.66	40139604
63	45	304SS	2	0.86	40139605
76	45	304SS	2	1.09	40139606
102	45	304SS	2	2.45	40139607
127	45	304SS	2	2.92	40139608



Bend Extended HV 90°



Bend Extended HV 45°

BEND HV

Ø mm	Angle Degree	Material	Thickness mm	Weight kg	Item Number
50	45	Galv	1.5	0.5	40130840
63	45	Galv	1.5	0.25	40134100
76	45	Galv	1.5	0.8	40134030
102	45	Galv	2	1.25	40131080
127	45	Galv	2	2.1	40134010
152	45	Galv	2	4.9	40134340
203	45	Galv	2	2.36	40134249
50	90	Galv	1.5	0.55	40130790
63	90	Galv	1.5	0.45	40130780
76	90	Galv	1.5	1.3	40134020
102	90	Galv	2	2.05	40131070
127	90	Galv	2	2	40134000
152	90	Galv	2	3.2	40130750
203	90	Galv	2	4.74	40134251
50	45	304SS	1.5	0.2	8210005108
63	45	304SS	1.5	0.3	8210005110
76	45	304SS	1.5	0.7	8210005112
102	45	304SS	2	1.2	8210005114
127	45	304SS	2	1.4	8210005116
50	90	304SS	1.5	0.3	8210005109
63	90	304SS	1.5	0.45	8210005111
76	90	304SS	1.5	1	8210005113
102	90	304SS	2	2	8210005115
127	90	304SS	2	2.1	8210005117



Bend HV



Did you know that in addition to galvanised steel, we offer our High Vacuum (HV) ductwork system in 304 Stainless Steel as part of our standard product range. Products in 316 Stainless Steel are available upon request.



BRANCHES FOR HIGH VACUUM DUCT SYSTEMS

Nordfab High Vacuum (HV) branches are available in standard 45 degree or 90 degree angles and used for air contaminant collection where high vacuum and low airflow are required. The term "high vacuum" refers to the high vacuum and low airflow used to catch, transport, and filter fumes, dust, and other particles.



Scan the QR code for all HV Branches item numbers.

BRANCH EXTENDED HV 45°						
ØA mm	ØB mm	ØC mm	Material	Thickness mm	Weight kg	Item Number
50	50	50	Galv	1.5	0.76	40139648
63	63	50	Galv	1.5	5.8	40136039
63	63	63	Galv	1.5	0.94	40139650
76	76	50	Galv	1.5	1.04	40139651
76	76	63	Galv	1.5	1.08	40139652
76	76	76	Galv	1.5	1.39	40139653
102	102	50	Galv	2	2.35	40136063
102	102	63	Galv	2	2.5	40139655
102	102	76	Galv	2	2.58	40139656
102	102	102	Galv	2	5.8	40136038
127	127	63	Galv	2	2.8	40136061
127	127	76	Galv	2	3.07	40139659
127	127	102	Galv	2	3.24	40139660
127	127	127	Galv	2	3.4	40136062
152	152	63	Galv	2	4.1	40136059
152	152	76	Galv	2	4.2	40136058
152	152	102	Galv	2	5.8	40136037
152	152	127	Galv	2	4.9	40139665
152	152	152	Galv	2	5.15	40134150
152	152	152	Galv	2	5.12	40139666
203	203	63	Galv	2	6.8	40136055
203	203	76	Galv	2	6.8	40136054
203	203	102	Galv	2	2.13	40131050
203	203	102	Galv	2	7.37	40139667
203	203	127	Galv	2	7.65	40136057
203	203	152	Galv	1.5	3.27	40135670
203	203	203	Galv	2	8.2	40136056
50	50	50	304SS	1.5	0.76	40139625
63	63	63	304SS	1.5	0.94	40139627
76	76	50	304SS	1.5	1.04	40139628
76	76	63	304SS	1.5	1.08	40139629
76	76	76	304SS	1.5	1.39	40139630
102	102	63	304SS	2	2.5	40139632
102	102	76	304SS	2	2.58	40139633
127	127	76	304SS	2	3.07	40139636
127	127	102	304SS	2	3.24	40139637

BRANCH PIPES HV 45°						
ØA mm	ØB mm	ØC mm	Material	Thickness mm	Weight kg	Item Number
50	50	50	Galv	1.5	0.5	40130650
63	63	63	Galv	1.5	0.6	40130660
76	76	50	Galv	1.5	0.99	40135660
76	76	63	Galv	1.5	1.3	40135650
76	76	76	Galv	1.5	1.3	40135640
102	102	63	Galv	2	1.5	40130600
102	102	76	Galv	2	1.8	40135630
127	127	50	Galv	2	2.7	40136060
127	127	76	Galv	2	2.2	40135620
127	127	102	Galv	2	2.7	40135610
50	50	50	304SS	1.5	0.4	8210005118
63	63	63	304SS	1.5	0.6	8210005119
76	76	50	304SS	1.5	1	8210005126
76	76	63	304SS	1.5	1	8210005120
76	76	76	304SS	1.5	1	8210005121
102	102	76	304SS	2	1.8	8210005123
102	102	102	304SS	2	1.4	8210005122
127	127	102	304SS	2	2.8	8210005124



Branch Extended HV 45°



Branch Pipes HV 45°

Y-BRANCH EXTENDED HV 45°

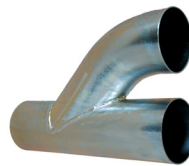
ØA mm	ØB mm	ØC mm	Material	Thickness mm	Weight kg	Item Number
50	50	50	Galv	1.5	0.4	40136030
63	63	63	Galv	1.5	0.9	40136031
76	76	76	Galv	1.5	1	40136032
102	102	102	Galv	2	1.8	40136033
127	127	127	Galv	2	2.8	40136034
152	152	152	Galv	2	3	40136035
203	203	203	Galv	2	3.27	40136036
50	50	50	304SS	2	0.4	40139671
63	63	63	304SS	2	0.6	40139672
76	76	76	304SS	2	1	40139673
102	102	102	304SS	2	1.8	40139674
127	127	127	304SS	2	2	40139675



Y-Branch HV Extended

BRANCH PIPES PARALLEL HV

ØA mm	ØB mm	ØC mm	Material	Thickness mm	Weight kg	Item Number
102	102	102	Galv	2	2.55	40130630
152	152	102	Galv	2	2.75	40130640
102	102	102	304SS	2	2.7	8210005127



Branch Pipes Parallel HV

T-PIPE HV 90°

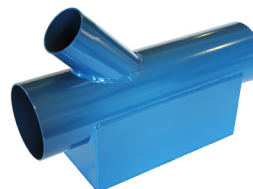
ØA mm	ØB mm	ØC mm	Material	Thickness mm	Weight kg	Item Number
152	152	152	Galv	2	2.83	40130120
203	203	203	Galv	2	3.27	40130210



T-Pipe HV 90°

REINFORCED BRANCH HV 45°

ØA mm	ØB mm	ØC mm	Material	Thickness mm	Weight kg	Item Number
63	63	63	MS	2	0.5	40134101
102	102	102	MS	2	5.11	40134131
102	102	63	MS	2	4	40134121



Reinforced Branch HV 45°, Mild Steel

ADAPTERS FOR HIGH VACUUM DUCT SYSTEMS

Nordfab High Vacuum (HV) adapters allow connection to machinery as well as varying sizes of ducting. They are being used for air contaminant collection where high vacuum and low airflow are required. The term "high vacuum" refers to the high vacuum and low airflow used to catch, transport, and filter fumes, dust, and other particles.



Scan the QR code for all HV Adapters item numbers.

REDUCER HV						
ØA mm	ØB mm	Length mm	Material	Thickness mm	Weight kg	Item Number
63	50	67	Galv	1.5	0.1	40130730
76	63	94	Galv	1.5	0.2	40135740
80	76	95	Galv	1.5	0.19	8210002182
127	76	115	Galv	2	0.4	40135820
102	76	120	Galv	2	0.3	40135830
108	102	120	Galv	2	0.61	40135840
127	102	120	Galv	2	0.6	40135810
152	127	120	Galv	2	0.75	40135800
108	76	140	Galv	2	0.47	40136071
102	63	150	Galv	2	0.42	40136064
108	63	150	Galv	2	0.47	40136070
203	152	150	Galv	2	1.34	40130020
203	127	150	Galv	2	1.6	40136068
152	102	165	Galv	2	1.08	40136065
76	50	180	Galv	1.5	0.2	40135750
63	50	67	304SS	1.5	0.2	8210005138
76	50	70	304SS	1.5	0.2	8210005139
76	63	75	304SS	1.5	0.2	8210005140
102	76	120	304SS	2	1.4	8210005141
108	102	120	304SS	2	0.5	8210005142
127	102	120	304SS	2	0.7	8210005143
127	76	120	304SS	2	0.6	8210005144

REDUCER EXTENDED HV						
ØA mm	ØB mm	Length mm	Material	Thickness mm	Weight kg	Item Number
63	50	155	304SS	2.0	0.3	40139685
76	50	155	304SS	2.0	0.33	40139686
76	63	155	304SS	2.0	0.38	40139687
102	63	150	304SS	2.0	0.46	40139688
102	76	155	304SS	2.0	0.49	40139689
108	102	125	304SS	2.0	0.6	40139690
127	76	170	304SS	2.0	0.77	40139691
127	102	155	304SS	2.0	0.85	40139692



Reducer HV

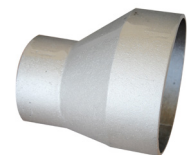


Reducer HV Extended

END CAP HV				
Ø mm	Material	Thickness mm	Weight kg	Item Number
50	Galv	0.7	0.02	40130031
63	Galv	0.7	0.05	40130030
102	Galv	0.7	0.12	40130040
152	Galv	0.7	0.15	40130050
203	Galv	0.7	0.24	40130060



End Cap HV



Reducer HV Eccentric

REDUCER ECCENTRIC HV						
ØA mm	ØB mm	Length mm	Material	Thickness mm	Weight kg	Item Number
102	63	125	Aluminum	4.5	0.35	40130710
152	102	145	Aluminum	4.5	0.49	40130700

HOSE & CLAMPS FOR HIGH VACUUM DUCT SYSTEMS

Nordfab offers flexible ducting / hose and hose clamps for air contaminant collection where high vacuum and low airflow are required. The term "high vacuum" refers to the high vacuum and low airflow used to catch, transport, and filter fumes, dust, and other particles.



Scan the QR code for all HV Hose & Clamps item numbers.

Rubber Hose HV

This hose will be used as bends. Rubber bends are used when conveying abrasive material such as shavings, sand, dust and powder etc.

- Inner tube: wear resistant SBR/NR, black, smooth.
- Reinforcement: synthetic textile with embedded steel helix.
- Cover: wear and weather resistant SBR/NR, black, corrugated.
- Temperature range: -40°C to +90°C.
- Electrical properties: conductive tube and cover, $R < 106 \Omega/m$.
- Available in 12m lengths.

RUBBER HOSE HV

Ø mm	Length mm	Material	Weight kg	Item Number
63	12	Natural Rubber	13.56	8210002183
76	12	Natural Rubber	16.44	8210002184
102	12	Natural Rubber	22.2	8210002185
127	12	Natural Rubber	27.96	8210002186
152	12	Natural Rubber	33.24	8210002187



Rubber Hose HV

HOSE CLAMP HV

HV Hose Clamps are used with HV Rubber Hose. Ø63 - 152 mm, galvanized steel construction.



Hose Clamp HV

HOSE CLAMP HV

Ø mm	Weight kg	Item Number
63	0.25	8210002188
76	0.25	8210002189
102	0.3	8210002190
127	0.3	8210002191
152	0.3	8210002192

LEAF VALVE MANUAL HV MDKB

ØA mm	ØB mm	Material	Weight kg	Item Number
63	63	Galv	0.3	40136002
76	63	Galv	0.3	40136003
76	76	Galv	0.3	40136004



Leaf Valve Manual HV MDKB

LEAF VALVE HV MDKM

ØA mm	ØB mm	Material	Weight kg	Item Number
63	63	Galv	0.3	40136022
76	63	Galv	0.3	40136023
76	76	Galv	0.3	40136024



Leaf Valve HV MDKM

HOSE CONNECTOR HV MDKS

ØA mm	ØB mm	Material	Weight kg	Item Number
63	50	Galv	0.3	40136043
63	63	Galv	0.3	40136044
76	50	Galv	0.3	40136045



Hose Connector HV MDKS

Flap Valve HV

The Flap Valve KV 50 can be mounted onto pipes or vacuum hoses. Designed for Ø63 mm pipe coupling - reducers needed to change dimensions. Male Ø50 mm hose coupling / connector (item # 40151100) fits directly into the KV50 Flap Valve. Hose coupling make it very fast and easy to connect / disconnect vacuum hoses. Due to conical design of Flap Valve and Hose coupling the connection is tight and secure. This system has no Swivel functionality - please see our Swiveling system. Material used are electrically conductive plastic material. Flap Valves can be installed with Microswitch for automatic start / stop.



KV 50
Item no:
40146450



KV 50-HC
Item no:
40146455



AS set
Item no:
40141550



A pipe coupling is always included when purchasing a Flap Valve HV (item no 40146450).

FLAP VALVE HV

Ø mm	Weight kg	Designation	Description	Item Number
50	0.2	KV 50-HC	Flap Valve with 50 mm hose coupling for mounting on hose. Set consists of 1 x KV 50 Flap Valve and 1 x Ø50 mm hose coupling Male (item# 40151100). Fits also outside on Ø50 mm pipe. Flap Valve has conical inlets in both ends. Possibility for installing Microswitch (item# 40141550).	40146455
50	0.5	KV 50	Flap Valve for mounting on steel pipe. Set consists of 1 x Flap Valve and 1 x Ø63 mm Pipe coupling (item# 40139350). Flap Valve fits outside onto Ø50 mm pipe without pipe coupling. Can be used in combination with Male hose coupling (item# 40151100) to be ordered separately. Possibility for installing Microswitch (item# 40141550).	40146450
-	0.03	AS set	AS set with microswitch for automatic start/stop of vacuum unit. Comes with screws.	40141550

Hose Couplers, swivelling

The hose coupling system is available in a wide range that fits the most common hose diameters. The couplings are made of electrically conductive plastic material, and the conical coupling part can be supplied in two diameters. Ø50 mm couplings fit directly onto the KV50 slide valve and the TAV50 automatic valve. Ø40 mm couplings can be connected to either 50 mm couplings or the aforementioned valves using an adapter. These couplings make it very easy to connect / disconnect the vacuum hose fast and easy. Flap Valves can be installed with microswitches for automatic start / stop.



SM51
Item no:
43930102



SF51
Item no:
43930101



SV51
Item no:
43885001

Hose Couplers, swivelling

HOSE COUPLER. SWIVELLING

Ø mm	Weight kg	Model	Type / Description	Item Number
51	0.2	SF51	Female coupling. Fits onto Ø50 mm pipe / hose / accessories both item# 43930102 and item# 43885001. Release button for easy release male coupling (item# 43930102).	43930101
51	0.2	SM51	Male coupling. Fits onto both item# 43930101 and to item# 43885001. Fits also Flap valve KV50 without swivel functionality.	43930102
51	0.2	SV51	Flap valve. Fits onto Ø50 mm pipe / hose / accessories. Used in combination with item# 43930101 and 43930102. Possibility for installing microswitch item# 40141550. Release button for easy release male coupling (item# 43930102).	43885001

DAMPERS FOR HIGH VACUUM DUCT SYSTEMS

Nordfab offers dampers for use in High Vacuum (HV) Ducting Systems. Manual or automatic dampers allow regulation of the volume of airflow through a section of ductwork. The term "high vacuum" refers to the high vacuum and low airflow used to catch, transport, and filter fumes, dust, and other particles.



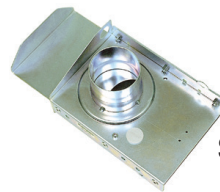
Scan the QR code for all HV Dampers item numbers.

SBBA Manual Damper HV

The SBBA is a circular slide damper for tight closure. In the closed position, the damper is airtight and silent. Since there is no damper blade in the air stream in the open position, the damper is suitable for use in systems for dustladen air. The damper is used for closing extraction points on machinery and in workplaces not currently in use.

SBBA MANUAL DAMPER HV

Ø mm	Material	Weight kg	Item Number
50	Galv	2.3	8210004509
63	Galv	2.4	8210004510
76	Galv	2.5	8210004511
102	Galv	2.8	8210004514
127	Galv	3.3	8210004518
152	Galv	4.4	8210004521
203	Galv	6.2	8210004525



SBBA Manual Damper HV

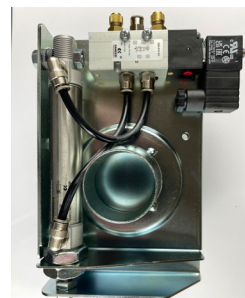
SBBB Automatic Damper HV

The SBBB is a circular compressed air powered automatic slide damper for rapid and tight closure. Since the damper is opened and closed automatically, extraction is always focused on the connections, extraction points, or machines currently in operation. This maximizes extraction power, with lower energy consumption as a bonus.

- The damper should be connected to clean and dry compressed air.
- Working pressure 5-8 bar.
- Maximum temperature 80° C.
- Voltage: 230V AC (Coils for 24-48-110V AC & DC optional).

SBBB AUTOMATIC DAMPER HV

ØA mm	Material	Voltage	Power Type	Weight kg	Item Number
50	Galv	230	VAC	1.9	8210004688
63	Galv	230	VAC	2.65	8210004689
76	Galv	230	VAC	3.05	8210004690
102	Galv	230	VAC	3.9	8210004691
127	Galv	230	VAC	4.7	8210004928
152	Galv	230	VAC	5.7	8210004933
203	Galv	230	VAC	8.3	8210004938



SBBB Automatic Damper HV

HANGERS AND INSTALLATION PRODUCTS FOR HIGH VACUUM DUCT SYSTEMS

Nordfab offers various installation products for High Vacuum (HV) ducting systems. The term "high vacuum" refers to the high vacuum and low airflow used to catch, transport, and filter fumes, dust, and other particles.



Scan the QR code for all HV Hangers & Installation item numbers.

Beam Clip HV

Used in pairs to fix universal profiles to beams where drilling is not permitted / possible. Beam flange: max. 25mm.



Beam Clip HV

BEAM CLIP HV		
Ø mm	Weight kg	Item Number
1	0.39	40170250

Pipe Clamp HV

For use with Nordfab's High vacuum System, Pipe Clamps are used to suspend pipes together with universal bracket or profile. Ø50-203mm, galvanised steel construction.



Pipe Clamp HV

PIPE CLAMP HV			
Ø mm	Material	Weight kg	Item Number
50	Galv	0.08	40170160
63	Galv	0.1	40170170
76	Galv	0.11	40170180
102	Galv	0.17	40170190
127	Galv	0.25	40170230
152	Galv	0.32	40170210
203	Galv	0.47	40170220

Universal Bracket HV

Universal bracket for suspending HV pipes.



Universal Bracket HV

UNIVERSAL BRACKET HV				
Ø mm	Length mm	Material	Weight kg	Item Number
1	0	Galv	0.79	40170010
2	0	Galv	1.18	40170020
3	2	Galv	1.61	40170030

Universal Wall Bracket HV

For suspending wall-mounted pipes.



Universal Wall Bracket HV

UNIVERSAL WALL BRACKET HV

Ø mm	Length mm	Material	Weight kg	Item Number
1	0	Galv	0.1	40170060
2	0	Galv	0.46	40170070
3	2	Galv	3.09	40170080

CHANNEL NUT M8 WITH SHORT SPRING HV

Ø mm	Weight kg	Item Number
1	0.03	40170260



Channel Nut M8 with Short Spring HV

PIPE HANGER HV

ØA mm	Material	Weight kg	Item Number
50	304SS	0.1	8210005052
63	304SS	0.1	8210005053
76	304SS	0.1	8210005054

PIPE HANGER HV

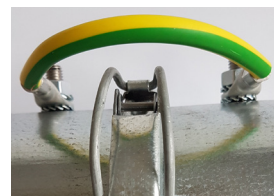
ØA mm	Material	Weight kg	Item Number
102	304SS	0.1	8210005055
129	304SS	0.1	8210005056
154	304SS	0.1	8210005057



Pipe Hanger HV

CABLE FOR GROUNDING

L mm	Item Number
150	8210004918
300	8210004919
500	8210004920



Cable for grounding

When ordering Cable for Grounding, the following items are included:

- CU - Cablesheoe 16 mm Ø8 (qty: 2)
- Safety Washer FZB M 8 DIN6798A (qty: 4)
- Steel Nut FZB M8 (qty: 2)
- Cable 90C H07V2-K 1G16 Yellow / Green (qty: 1)
- Welding bolt for grounding cables M8 x 20 (qty: 2)

Instructions for attaching Cable for Grounding

Cable for Grounding prevents buildup of static electricity. Must be requested at time order is placed - Nordfab will provide the grounding wires as well as ductwork pre-installed with wire connection hardware.



1 Drill a Ø7 mm hole.



2 Drill in both parts.



3 Use a M8 thread tap.



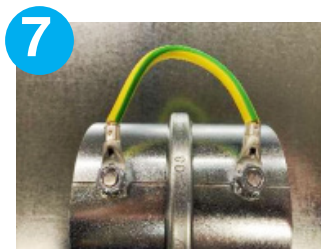
4 Shrew the bolt from inside.



5 Attach the first bolt and tight it and then apply the first cutting washer.



6 Continue with the cable washer and nut and then tight the parts.

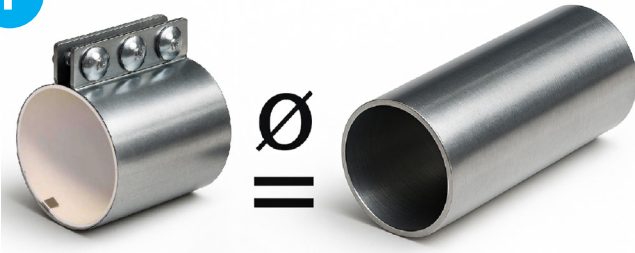


7 Ready.

HV Pipe System Installation Instructions

These installation instructions provide step-by-step guidance on how to install our HV pipe systems correctly and efficiently. Correct installation is crucial to ensure the quality and functionality of your project and to print it to a successful conclusion.

1



First, check that the diameter of the pipe coupling matches that of the pipe to ensure that everything is correct and that installation goes smoothly.

2



Before assembly, the pipe ends must be deburred and thoroughly cleaned of dirt, such as dust or oil. This ensures a clean and secure connection of the pipe during assembly.

3

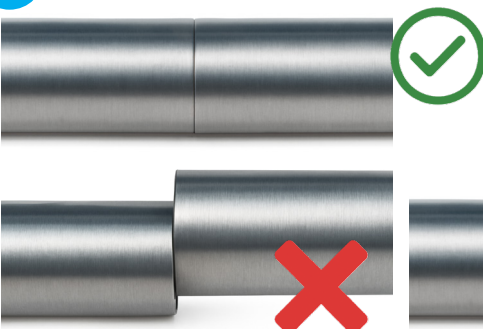


The next step is to cut the pipe sections to length. Please note that there are two types of pipe couplings: the HV pipe coupling and the Eurac HL pipe coupling. The pipe can be cut to length using standard tools or equipment (e.g., an angle grinder or a saw).

With the HV pipe coupling, it is important to allow for a gap of 5 mm, as this coupling has a seal stop inside. With the Eurac type HL pipe coupling, the gap should be not more than 2 mm to ensure optimum tightness.

Ensure that the pipe ends have been thoroughly deburred and cleaned before cutting to length, as described in step 2, to ensure a clean cut edge and a perfect fit for the pipe

4



The next step is to align the pipe ends precisely with each other. Ensure that the pipe ends are axially aligned and that there is no axial or angular misalignment. If possible, the angle between the pipes should be less than 2 degrees, as this is the only way to ensure maximum tightness of the connection.

5



The next step is to mark both ends of the pipe at a point corresponding to half the length of the pipe coupling. In our case, this is 75 mm and only applies to the Eurac type HL pipe coupling. With the HV pipe coupling, marking is not absolutely necessary, as the inner stop automatically centers the connection. However, a mark can be made for safety purposes. For the HV pipe coupling, this is 30 mm from the end of the pipe.

6



The Eurac type HL pipe coupling contains a grounding strap that must be bent inward. Before installation, ensure that this grounding strap is not bent and is correctly facing inward, as shown in the picture. This is the only way to ensure that the grounding strap is clamped between the pipe and the seal and that proper grounding between the pipes is ensured. The seal on this pipe coupling is split so that several tabs interlock. In this step, the seal can be realigned so that it is at an angle of approximately 90 degrees to the screw connection, ensuring optimum tightness.

This is not necessary with the HV pipe coupling, as it has a conductive EPDM seal.

7



The final step is to install the pipe coupling. The HV pipe coupling is pushed onto one end of the pipe until it hits the inner stop. Then the other pipe is pushed into the opposite side of the HV pipe coupling until it also hits the stop. Both pipes should now be inserted 30 mm into the HV pipe coupling. The screws are then tightened to a torque of 30 Nm.

The Eurac Type HL pipe coupling is installed slightly differently. First, the pipe coupling is pushed completely onto one pipe until the pipe end protrudes (caution: make sure that the grounding tab is not bent). The other pipe end is then positioned axially aligned in front of the first pipe end. After positioning, carefully slide the pipe coupling over the other pipe until the markings on both sides of the pipe ends are still visible. Then check that the grounding tab is correctly positioned between the pipe and the seal. Finally, tighten the screws to a torque of 60 Nm.

One final tip: for a horizontal pipe, the screw connection should be positioned at the top.

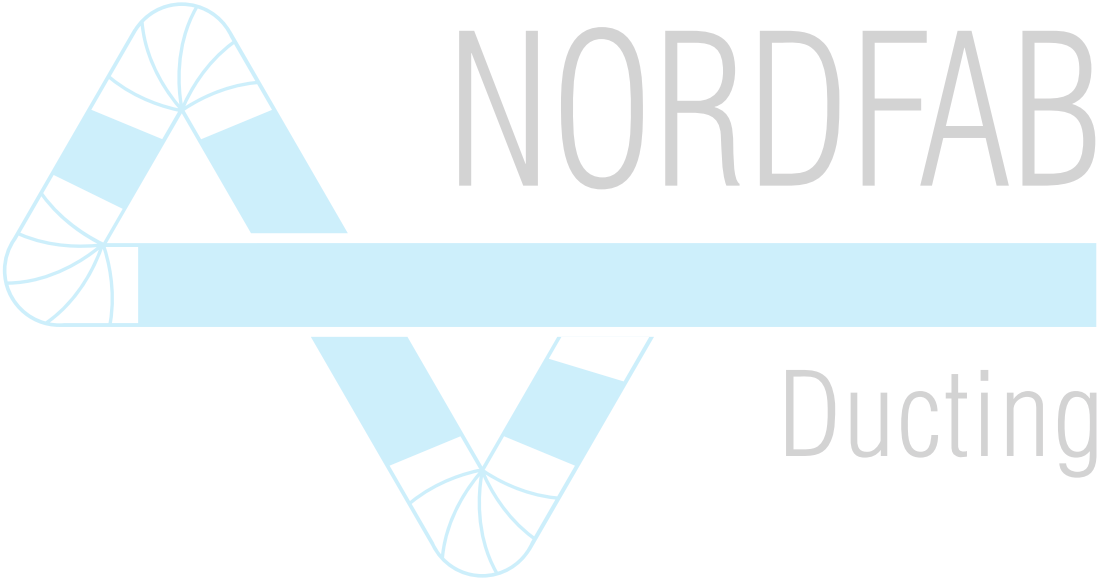


Discover our Revit Models at BIMobject

Resources for facility designers & engineers

Download our Revit Models!







Nordfab Europe

Industrivej 13
Assens 9550 Mariager, Danmark
+45 86 47 11 00
email: salesdk@nordfab.com



Nordfab UK

Limewood Approach Seacroft
Leeds, LS14 1NG
+44 1132 739 400
email: sales@nordfab.co.uk

www.nordfab.com