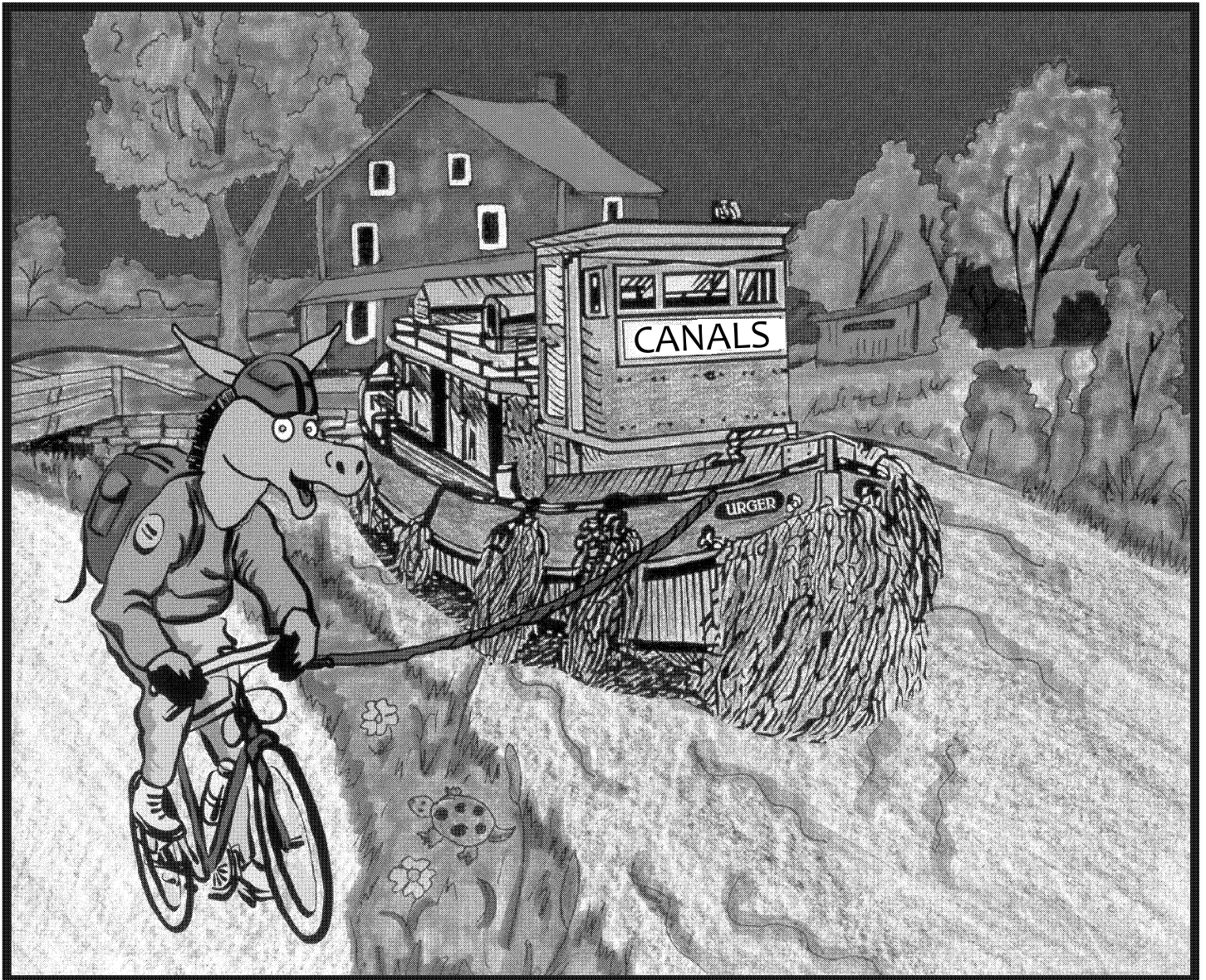
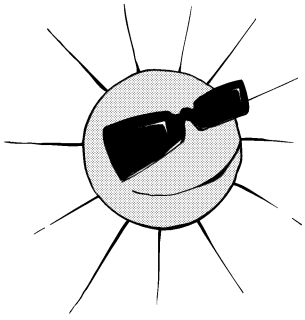


# New York State Canal System ACTIVITY BOOK



Canal  
Corporation



Sal, the mule made famous by the Erie Canal Song in 1913 has been a steadfast representative of the NYS Canal System. In this edition, Sal shows off the canal system, shares the song that made him famous and hopes to entice his fans with coloring pages, connect-the-dots, word jumbles and a little bit of history.

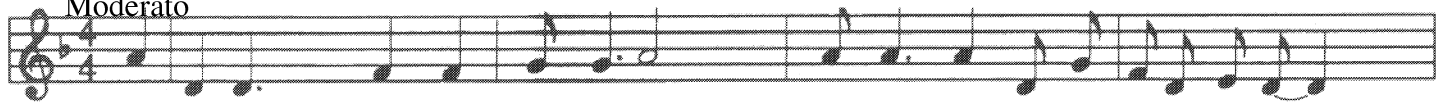
The construction of the Erie Canal came about for political as well as economic reasons. DeWitt Clinton, who in 1815 pushed the idea of a waterway to link the Hudson River and Lake Erie, wanted to revive his political career. It worked, too, because Clinton's role in building the canal led to his serving several terms as governor of New York. The canal, which was completed in 1825, also worked economically. By linking Buffalo to New York City, the waterway decreased freight costs. Towns along the canal - Buffalo, Rochester and Syracuse - boomed. The canal boats were slow but could carry thousands of passengers each year and were pulled along the towpaths by mules! The success of the Erie Canal set off a burst of canal building throughout the country.



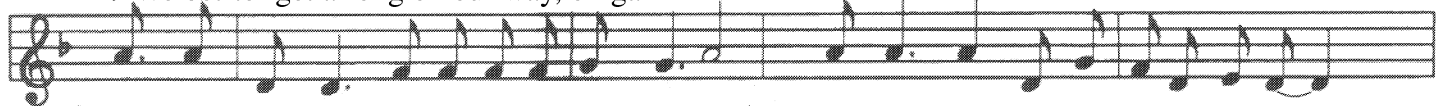
Visit the New York State Canal Corporation website:  
[www.canals.ny.gov](http://www.canals.ny.gov)

# THE ERIE CANAL SONG

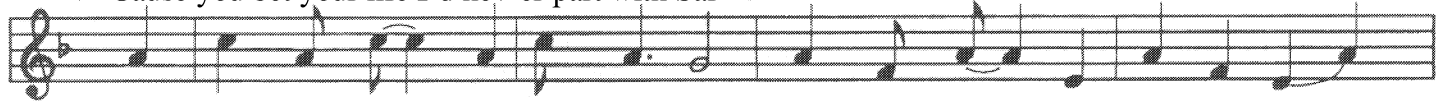
Moderato



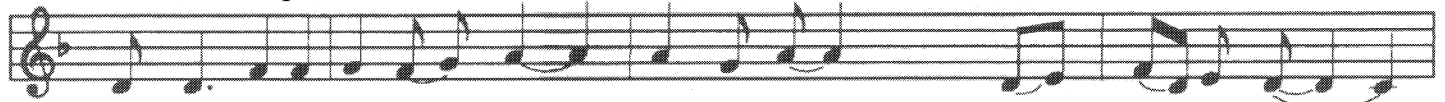
1. I've got a mule, her name is Sal, } Fif-teen miles on the Er-ie Can-al  
 2. We bet-ter get a-long on our way, ol' gal }



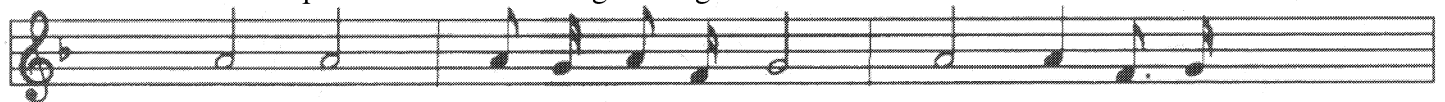
{ She's a good ol' work-er an' a good ol' pal } Fif-teen miles on the Er-ie Can-al  
 Cause you bet your life I'd nev-er part with Sal }



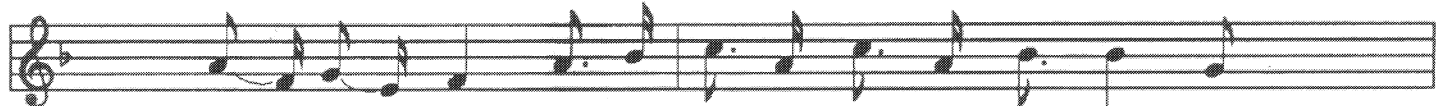
{ We've haul'd some barge - es in our day. Fill'd with lum - ber, coal and hay. And  
 Git up there, mule, here comes a lock. We'll make Rome 'bout six o - clock. }



we know ev-'ry inch of the way from Al - ban - y to Buf - fa - lo.  
 One more trip an' back we'll go Right back home to Buf - fa - lo. }



Low bridge, ev - 'ry - bod - y down! Low bridge, for we're



com - in' to a town. And you'll al - ways know your neigh - bor, You'll



al-ways know your pal, if you've ev - er nav - i - gat - ed on the Er - ie Can - al.

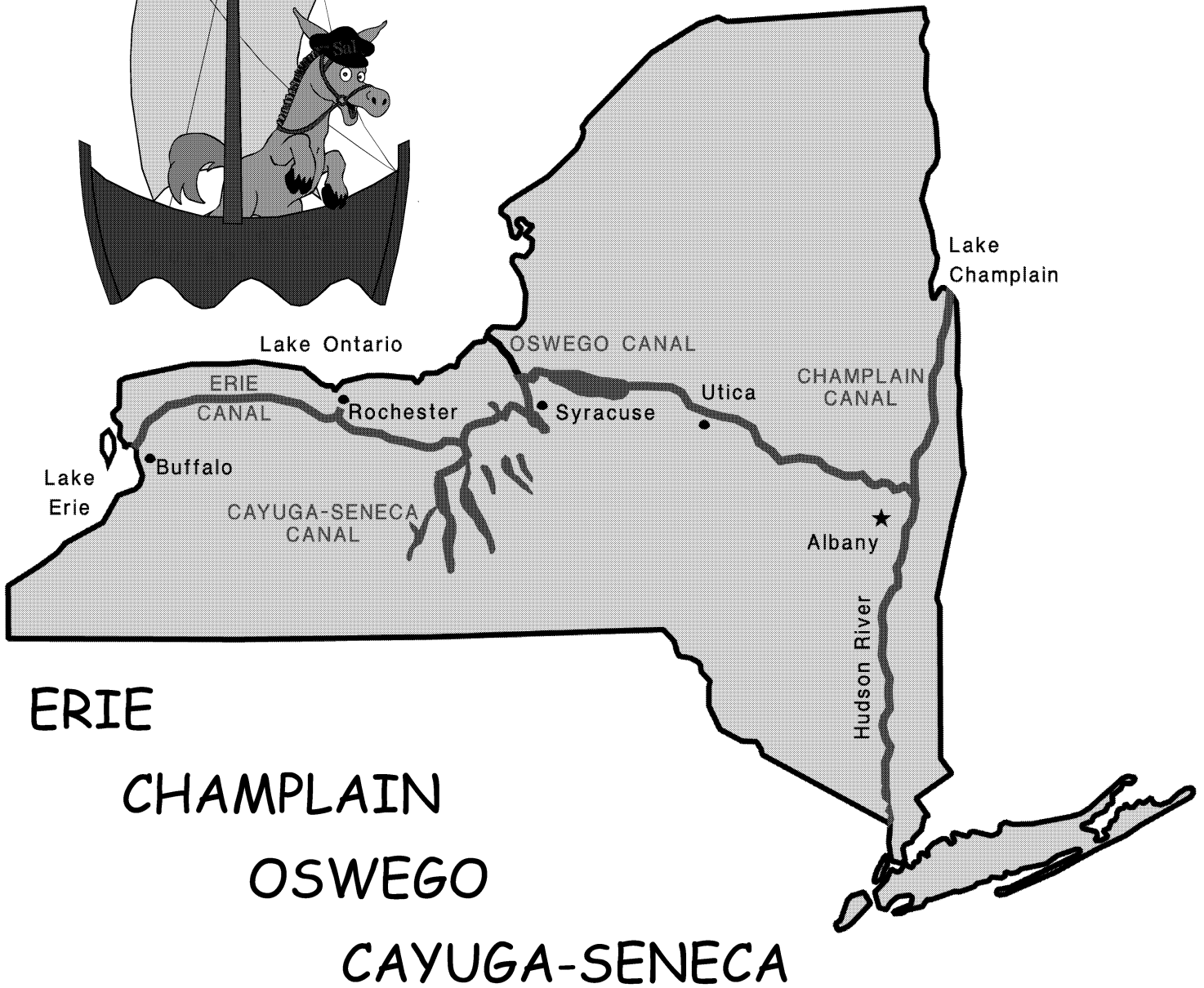
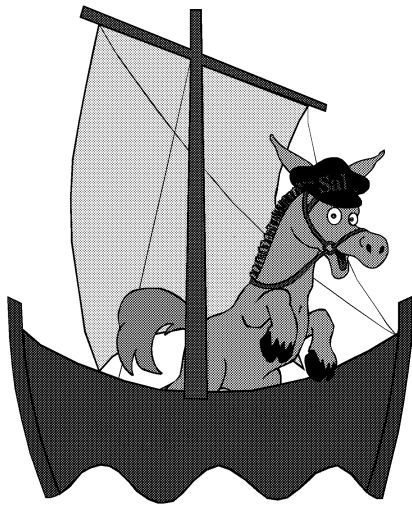
The "Erie Canal Song," also known as "Low Bridge," was first published in 1913. It was composed in order to protest the coming of the mechanized barge which would replace the mule that had been used previously. It quickly became a song that workers sang to make tedious tasks easier. The "Erie Canal" song made the long trip on the canal seem to pass by more quickly.

The chorus "low bridge..." refers to the bridges that crossed the canal. Passengers often rode on the flat roof of the canal boat to get fresh air. They would have to duck when approaching a bridge to avoid getting hit or knocked off the boat.



**SING ALONG  
WITH SAL**

# Unlock the Legend: NEW YORK STATE CANAL SYSTEM



ERIE

CHAMPLAIN

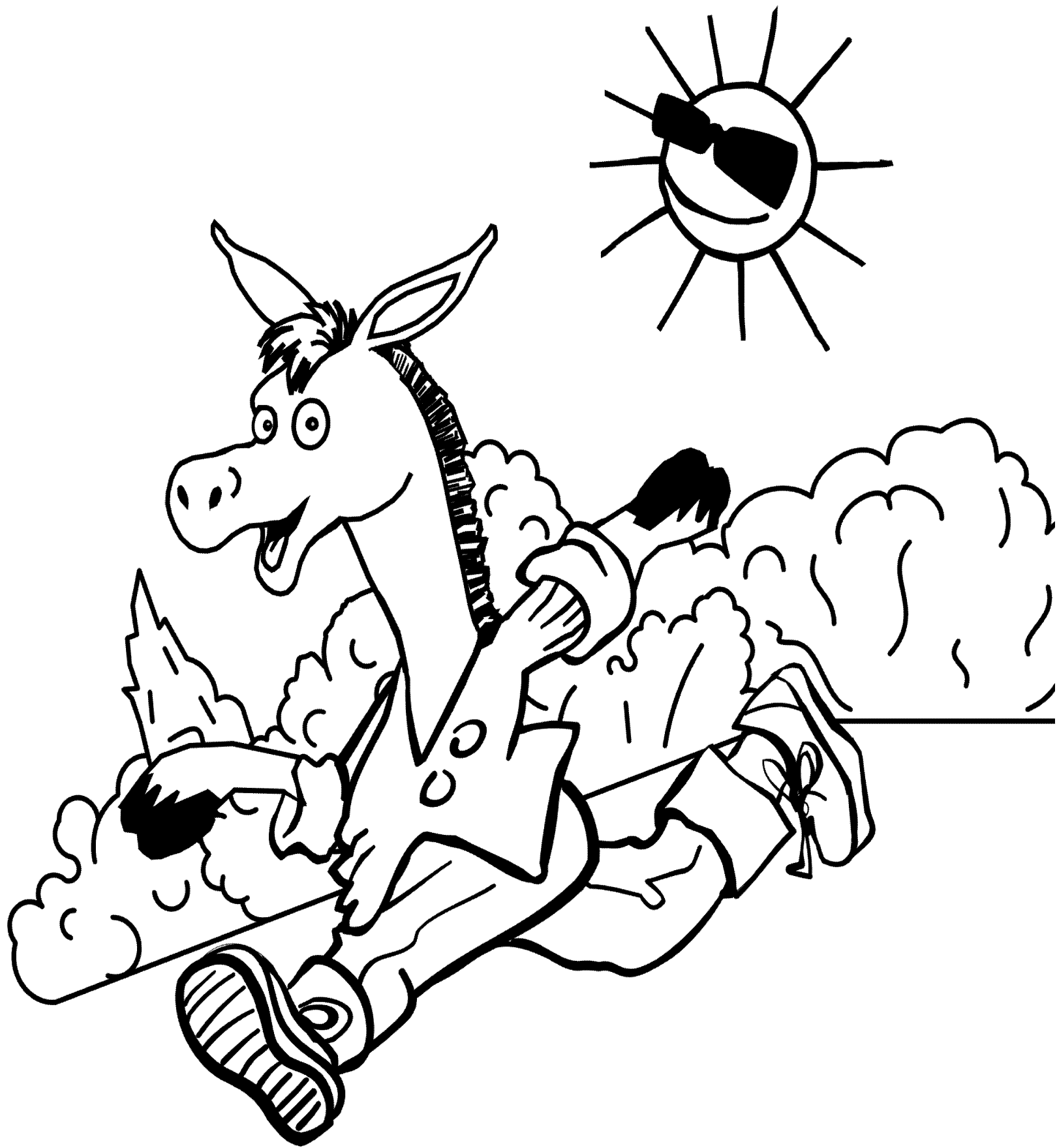
OSWEGO

CAYUGA-SENECA

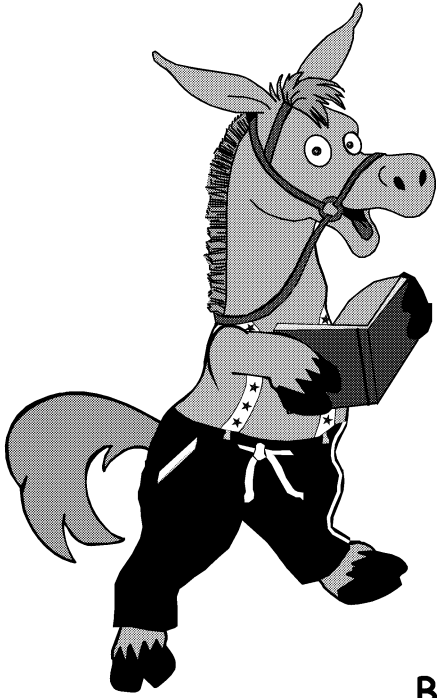
## FUN FACTS:

It took the muscle power of men and horses eight years to build the Erie Canal. Although it is considered the engineering marvel of its time, not a single professional engineer was involved.

The Waterford Flight is a series of five locks where boats are lifted and lowered the greatest height in the shortest distance of any canal in the world.



Sal Strolls Along The Scenic Canal Trail



# Glossary

**AQUEDUCT** - A water-carrying bridge built to help the canal cross over a river or a low valley.

**BARGE** - A flat-bottomed vessel used on canals or rivers to transport cargo.

**BRIDGE** - A structure carrying a roadway over the canal. Since they were built low to save money, a crew member sat up front in the boat and yelled to passengers - "low bridge everybody down" or they would be knocked off the boat.

**BOW** - The front part of a boat.

**CANAL** - An artificial or man-made waterway. A big ditch filled with water.

**CRADLE** - Part of a scale in a weighlock used to weigh canal boats.

**ERIE** - The original 363-mile canal that ran from Albany to Buffalo, connecting the Atlantic Ocean and the Great Lakes.

**FLOTILLA** - A fleet of small boats.

**HATCH** - A small door on the gate of a lock which opens to empty the water inside.

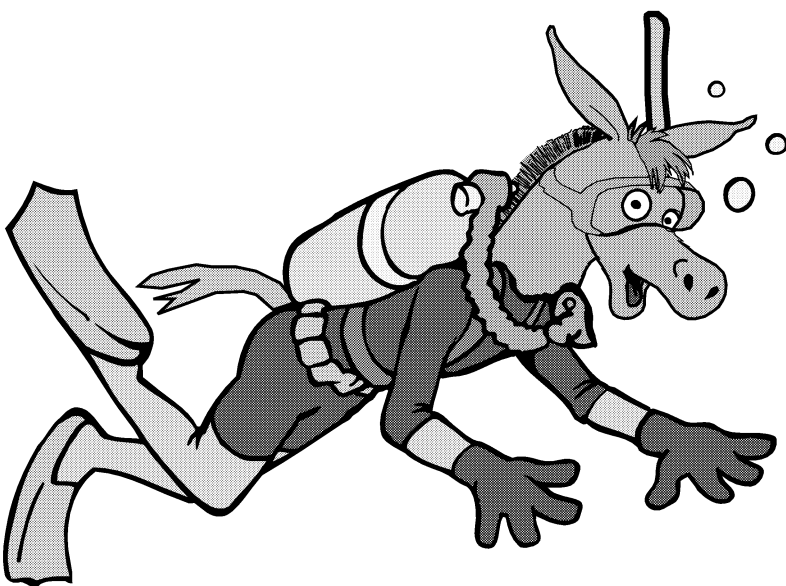
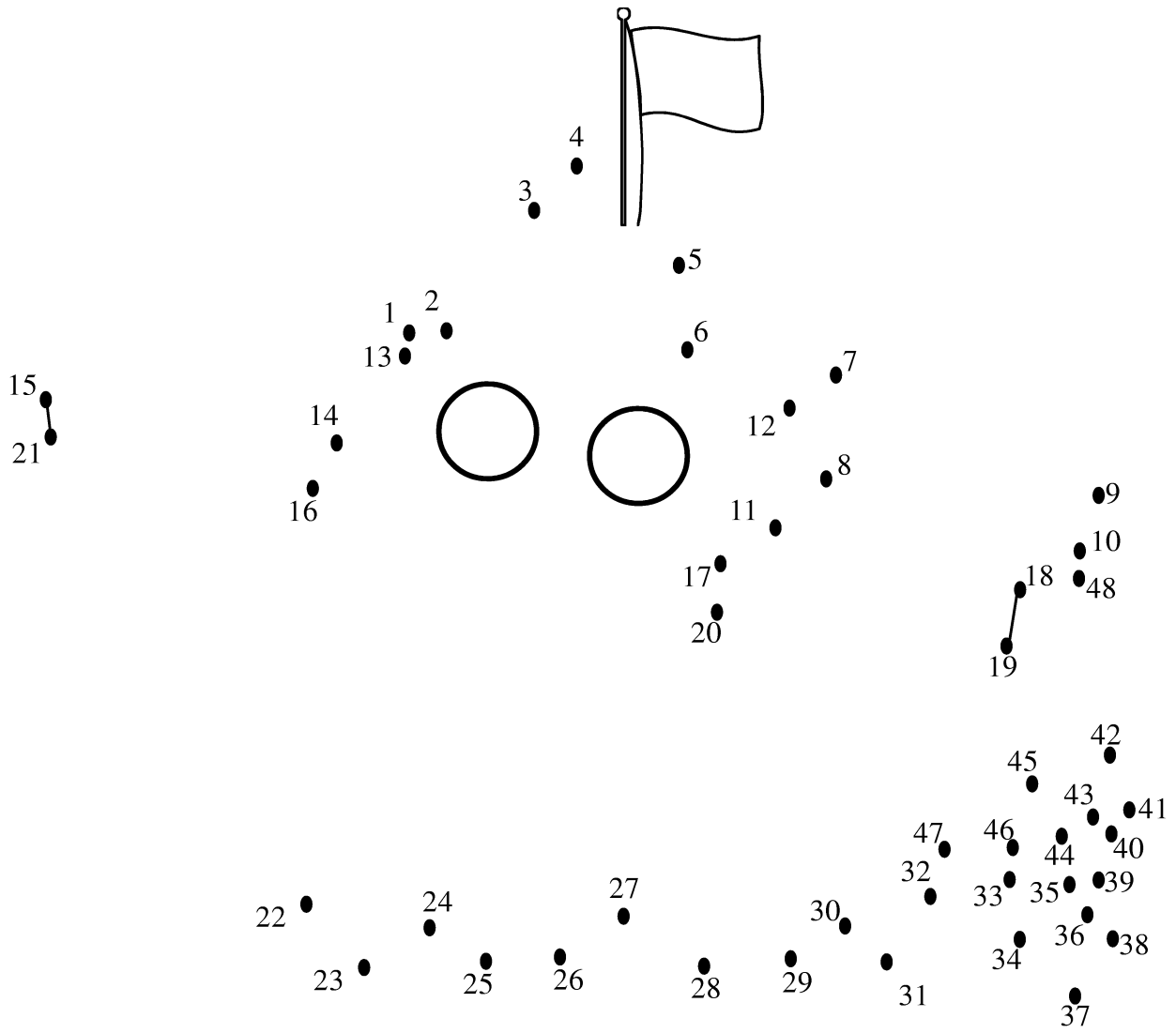
**HOGGEE** - A young boy in his early teens (or sometimes a man) who drove the animals used to tow the canal boats.

**LOCKTENDER** - The person who opens/closes the lock/s. (Also referred to as Lockmaster.)

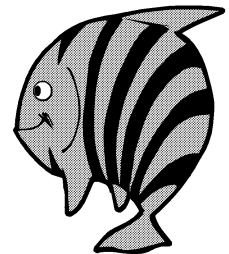
**MULE** - Canal boats had no engines or sails. They were pulled by a pair of sturdy mules or horses on a towpath alongside the canal.



# Connect-the-Dots



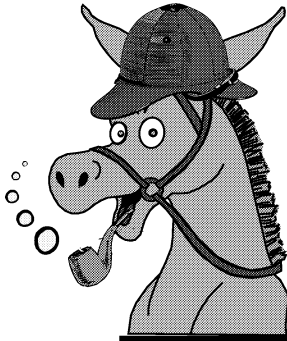
There are 524 miles of canal waterways to explore!



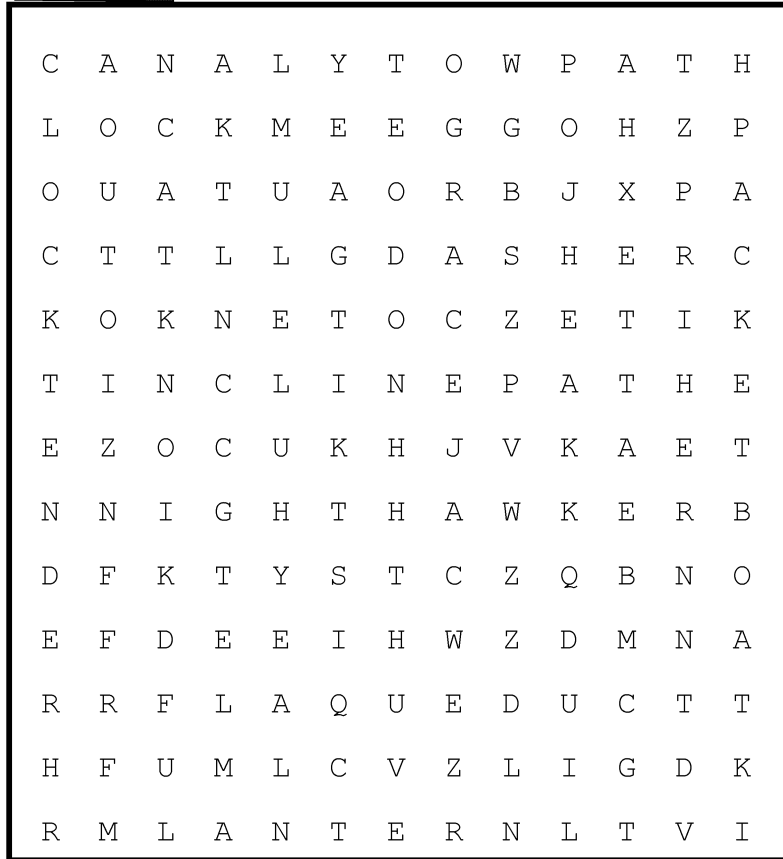


A Bridge for Boats  
was Called an  
Aqueduct





## Canal Word Find



(words are hidden in all directions - left, right, up, down and diagonal)

AQUEDUCT

CANAL

CARGO

COAL

CONCH SHELL

DAM

DASHER

HOGGEE

INCLINE PATH

LANTERN

LOCK

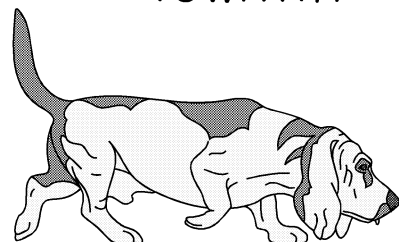
LOCKTENDER

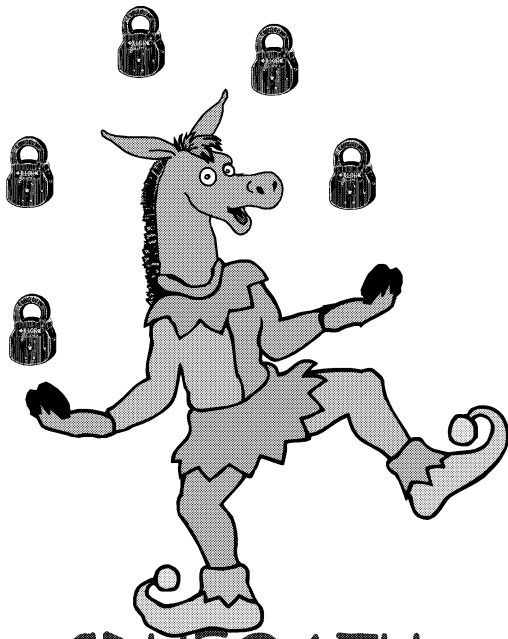
MULES

NIGHTHAWKER

PACKET BOAT

TOWPATH





UNJUGGLE LETTERS TO  
FIND CANAL WORDS  
FROM GLOSSARY

CDUEQATU

---

ACALN

---

DEARCL

---

EEIR

---

LEUM

---

OBW

---

CTAHH

---

GDIRBE

---

COKLS

---

DNTEERCKOL

---

RBEAG

---

GOHEGE

---

LTILLOAF

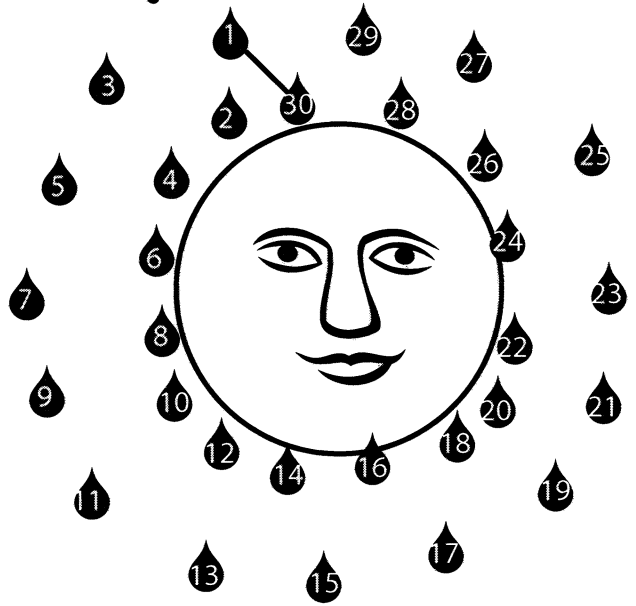
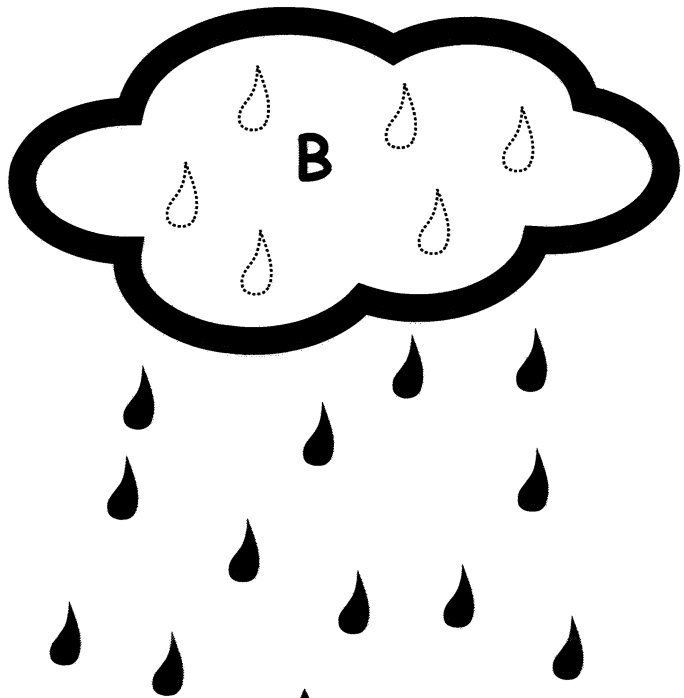
---



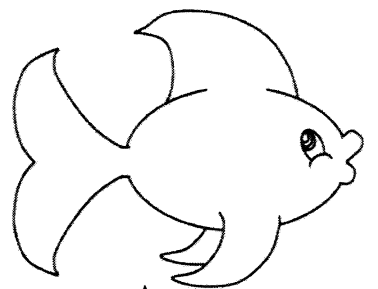
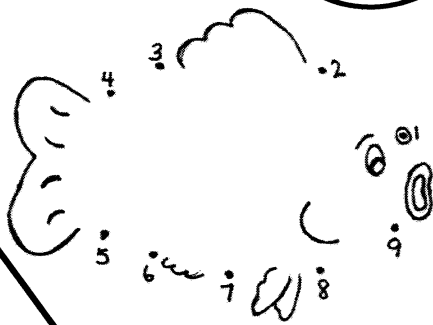
What you drop,  
means a lot!  
Help protect clean  
water by keeping  
litter and pollution  
out of storm  
drains.

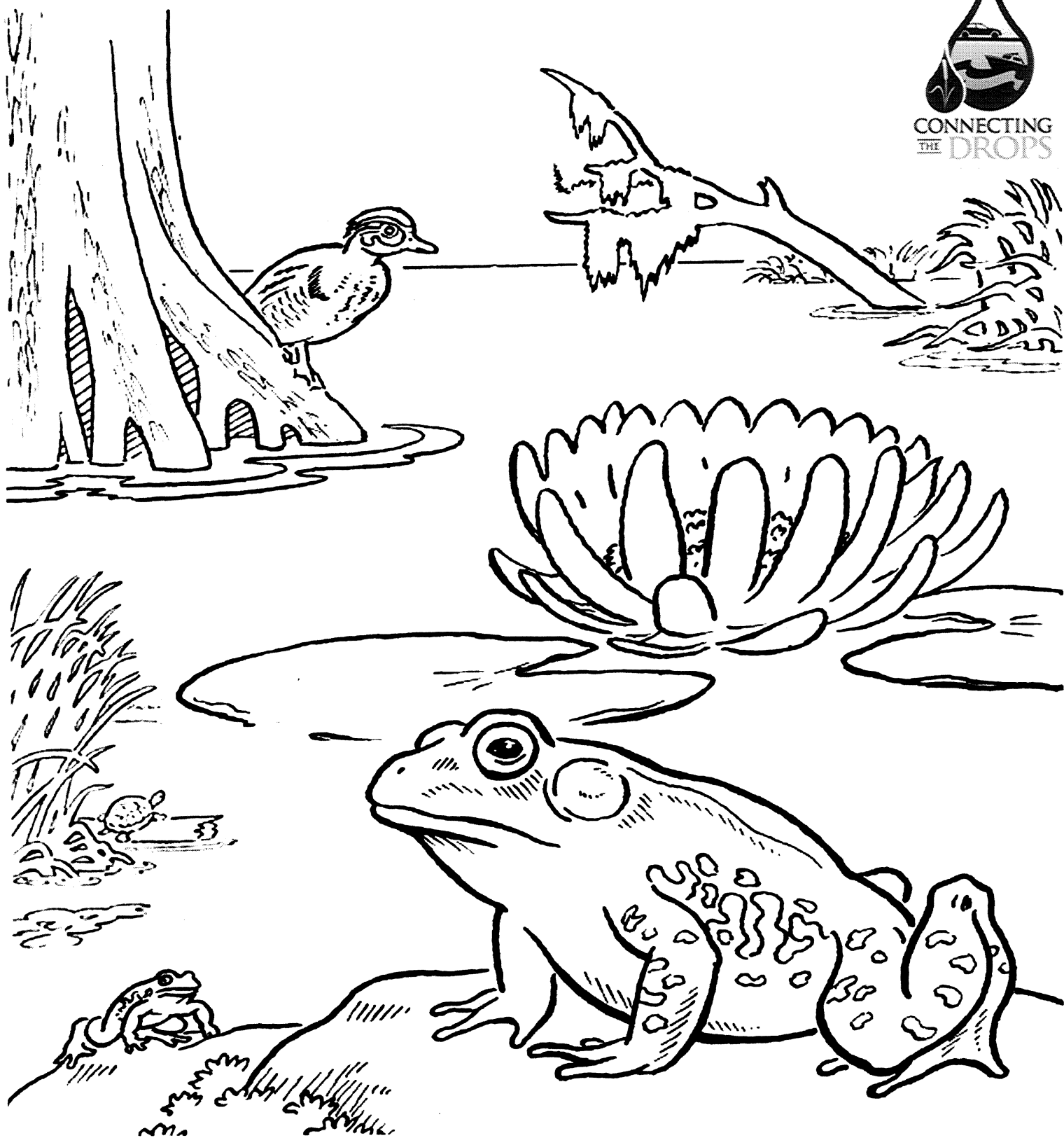
# CONNECT THE DROPS

## The Water Cycle

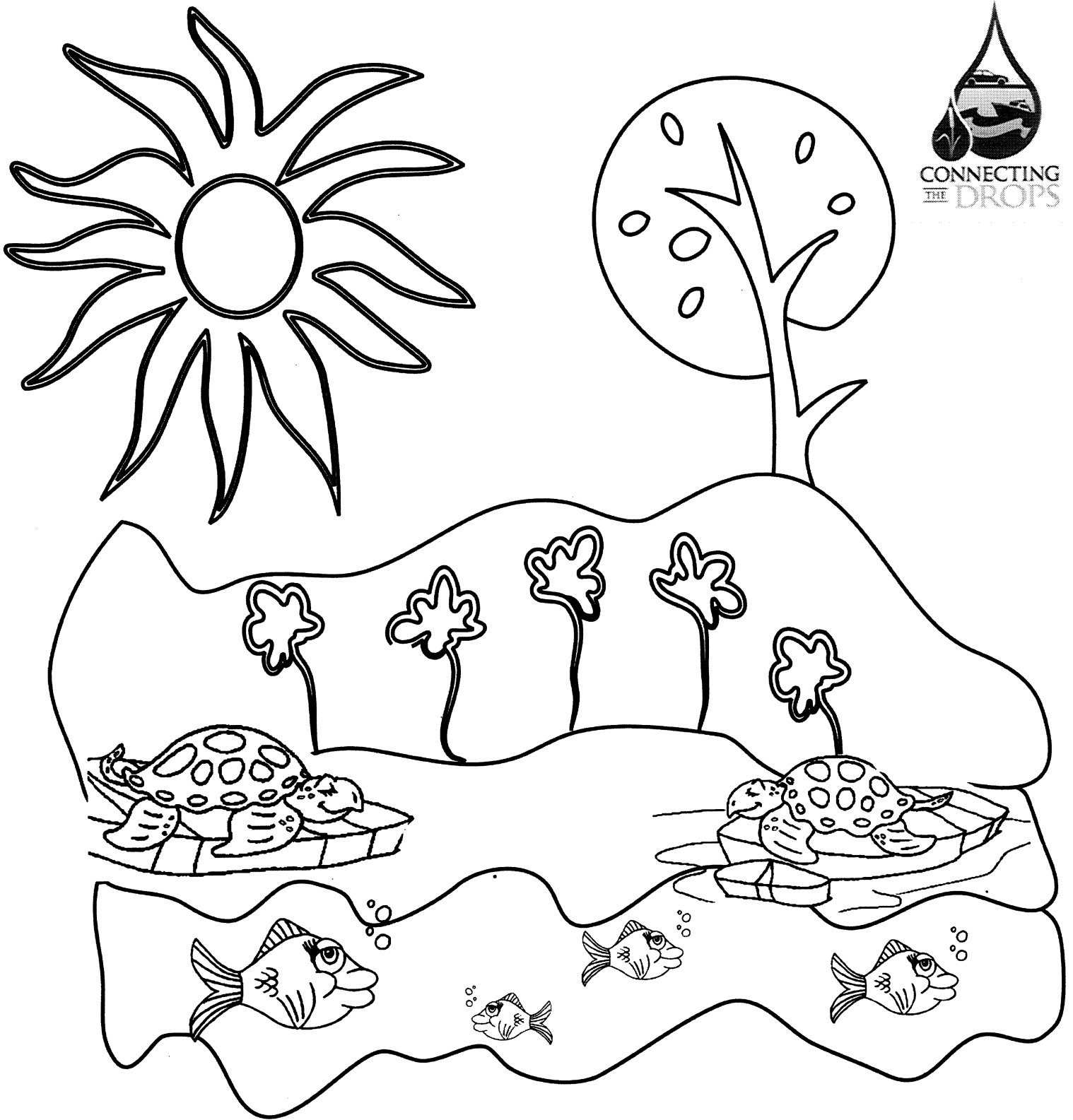


- A - evaporation
- B - condensation
- C - precipitation
- D - collection





All life forms depend on clean water. Wetlands are essential, natural, living entities that must be protected for the common good - the good of the people and the good of the huge variety of animals, fish and plants that survive in these unique habitats.



Give our water a hand! Do not dump trash into our rivers or canals. Let our plants, fish and turtles have a clean, healthy place to live.

SAL

