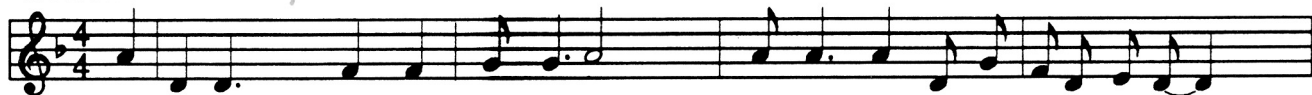
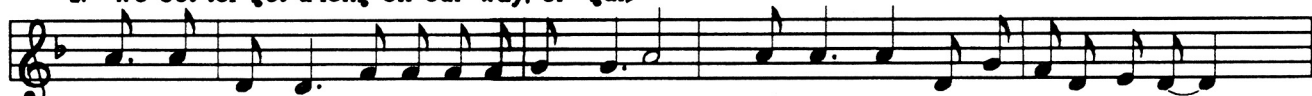


# THE ERIE CANAL

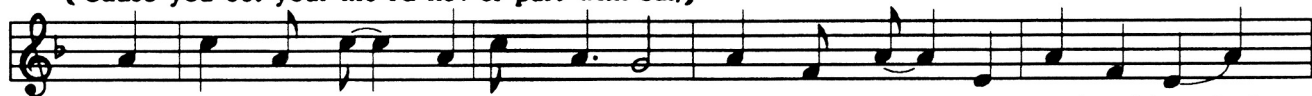
Moderato



1. I've got a mule, her name is Sal, } Fif-teen miles on the Er-ie Can-al.\_\_\_\_  
 2. We bet-ter get a-long on our way, ol' gal }



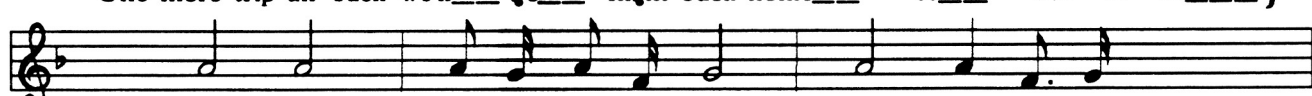
{ She's a good ol' work-er an' a good ol' pal, } Fif-teen miles on the Er-ie Can-al.\_\_\_\_  
 { 'Cause you bet your life I'd nev-er part with Sal, }



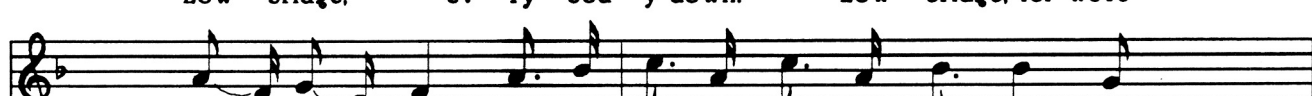
{ We've haul'd some barg - es in our day, Fill'd with lum - ber, coal and hay, And  
 { Git up there, mule, here comes a lock, We'll make Rome 'bout six o - clock,\_\_\_\_



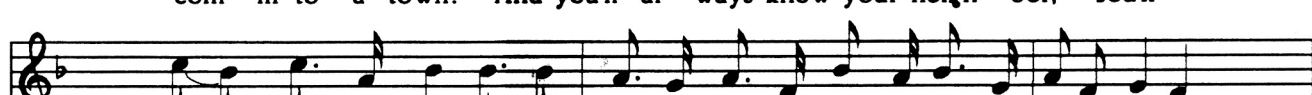
we know ev-'ry inch of the way from Al - ban - y\_\_\_\_\_ to\_\_\_\_\_ Buf - fa - lo.\_\_\_\_\_  
 One more trip an' back we'll\_\_\_\_ go\_\_\_\_\_ Right back home\_\_\_\_\_ to\_\_\_\_\_ Buf - fa - lo.\_\_\_\_\_ }



Low bridge, ev - 'ry - bod - y down! Low bridge, for we're



com - in' to a town? And you'll al - ways know your neigh - bor, You'll



al-ways know your pal, if you've ev - er nav - i - gat - ed on the Er-ie Can-al.

