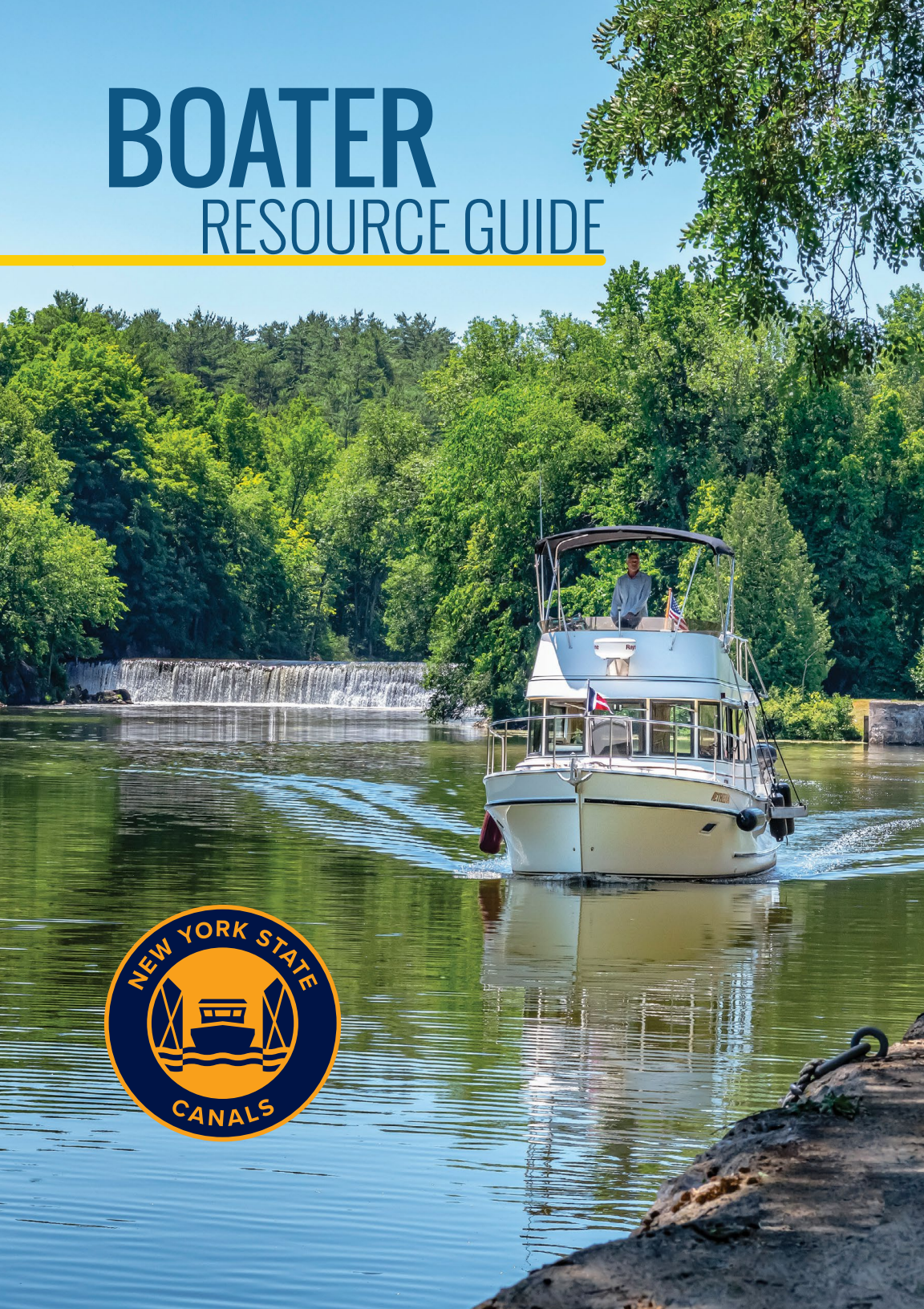


BOATER RESOURCE GUIDE



WELCOME TO THE NEW YORK STATE CANAL SYSTEM

The New York State Canal Corporation is responsible for operating, maintaining, improving and promoting the New York State Canal System's fully navigable 524-mile network of four canals—the Erie, Champlain, Oswego and Cayuga-Seneca, and related waterways—and more than 150 miles of the approximately 420-mile Canalway Trail.

The canal waterways link the Hudson River with Lake Champlain, Lake Ontario, the Finger Lakes and Lake Erie. It is the largest state-run inland waterway system in the United States and has been in continuous operation since 1825.

The Canal System is a National Historic Landmark and on the National Register of Historic Places. The Canal Corporation is a subsidiary of the New York Power Authority.

TABLE OF CONTENTS

Canal Waterways	2
Canal Features and Structures	5
Preparing for Navigation	8
Safety	11
How to "Lock Through"	13
Map	15
Staying at Canal Facilities	17
Locks, Lift Bridges and Guard Gates	20

INFO PRESENTED AS OF MARCH 1, 2026

For updates, visit canals.ny.gov, call 1-800-4CANAL4 or 1-518-449-6000, or email info@canals.ny.gov.

Listings of commercial and municipal enterprises are a courtesy to our audiences and provided for information purposes only. Identification or reference to any particular enterprise does not constitute or imply its endorsement, favoring or recommendation by the Canal Corporation.

Contact enterprises directly for their most accurate information.

New York State Canal Corporation

30 South Pearl St., Albany, NY 12207



Canal Waterways

ERIE CANAL



The longest canal in the system, the Erie Canal connects the Hudson River to Lake Erie. From Waterford, it passes through the Mohawk Valley's lush farms, expansive forests and historic small towns and cities. In Central New York, it runs through the natural waterways of Oneida Lake, the Oneida, Seneca and Clyde rivers, and borders some of the state's most acclaimed wildlife habitats, including the 10,000-acre Montezuma National Wildlife Refuge.

The western part of the canal is the longest section to follow its original alignment. Here the Erie retains its relationship with the communities that grew up along its banks, offering opportunities to experience historic main streets, lift bridges, cobblestone and sandstone buildings and canal engineering marvels.

Length 338 miles

Bridge Clearances*

Waterford to Three Rivers 21 feet
 Three Rivers to Montezuma 18.5 feet
 Montezuma to the Tonawandas 15.5 feet

Channel Depths*

Waterford to Three Rivers 14 feet
 Three Rivers to the Tonawandas 12 feet

** Bridge Clearances & Channel Depths may vary. Clearances and Depths are shown at normal pool.*

TRANSIT TIMES FOR THE CANALS CAN BE FOUND ON PAGES 21-29.

CHAMPLAIN CANAL



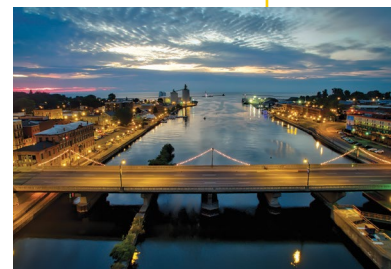
The Champlain Canal begins at its junction with the Erie Canal in Waterford and runs north to Whitehall, where it connects with Lake Champlain. From the French and Indian War to the Revolutionary War and from the Battle of Saratoga to its canal heydays in the 1800s, the Champlain Region is treasured by history enthusiasts. The Champlain Canal supported the cause of freedom from slavery, as it intersects with routes and regions significant to the Underground Railroad, linking counties in the northeastern part of New York State with Vermont and Canada.

Length 60 miles

Bridge Clearance* 17 feet

Channel Depth* 12 feet

OSWEGO CANAL



From the Erie Canal north to Oswego Harbor at Lake Ontario, the Oswego Canal provides a critical connection to Lake Ontario and the St. Lawrence Seaway. The junction of the Erie and Oswego canals is north of Syracuse at Three Rivers, where the Seneca, Oneida and Oswego rivers meet. The region's quiet waters and more remote terrain are well suited for boating, fishing, birdwatching, canoeing and kayaking. Oswego's active port is renowned for its festivals, historic sites and exceptional sport fishing.

Length 24 miles

Bridge Clearance* 21 feet

Channel Depth* 14 feet

Canal Features and Structures

CAYUGA-SENECA CANAL



The 12-mile-long Cayuga-Seneca Canal connects the Erie Canal to 90 miles of canalized rivers and lakes, including the Seneca River, and Cayuga and Seneca lakes.

The highlights of the region include: Seneca Falls, celebrated as the birthplace of the women's rights movement; the 10,000-acre Montezuma Wildlife Refuge, a premier birdwatching preserve; and the Finger Lakes Region, renowned for its natural beauty, elegant architecture, wine country and world-class cultural and recreational attractions.

Length 12 miles
Bridge Clearance* 16.5 feet
Channel Depth* 12 feet

SUMMARY OF WATERWAY LENGTHS

Waterway	Length
Champlain Canal	60 miles
Erie Canal	338 miles
Oswego Canal	24 miles
Cayuga-Seneca Canal (including Cayuga Lake to Ithaca, and Seneca Lake to Watkins Glen and Montour Falls: Approximately 90 miles)	12 miles
Total length of all Canal System Waterways	524 miles

** Bridge Clearances & Channel Depths may vary. Clearances and Depths are shown at normal pool.*

For more navigation information on the waterways, search Navigation at canals.ny.gov.

The New York State Canal System includes a number of unique and historic structures.



LOCKS

Locks are concrete chambers with a set of gates on each end. Water is let into or released from the lock chamber to enable boats to transit changing elevations across the state. The locks are 328 feet long and 45 feet wide. The area for vessels is 300 feet long by 43.5 feet wide. There are 57 locks on the Canal System: 35 on the Erie, 11 on the Champlain, seven on the Oswego and four on the Cayuga-Seneca.



LIFT BRIDGES

Lift bridges carry vehicle and foot traffic over the Erie Canal. When a vessel needs to transit under a lift bridge, they notify the lift bridge operator, who signals roadway and pedestrian traffic to stop at each end of the lift bridge. The operator raises the bridge upwards for the vessel to pass under. The lift bridge is lowered and traffic is signaled to start across the lift bridge. Built between 1905 and 1918, there are 16 active lift bridges in Western New York between Fairport and Lockport.



MOVABLE DAMS

Movable dams regulate water levels on the Mohawk River, a natural body of water incorporated into the Erie Canal. In addition to the eight movable dams between Schenectady and Fort Plain, there are also a number of fixed dams; all are clearly marked. Boaters and paddlers should stay away from all dams.



GUARD GATES

Guard gates isolate sections of the canal in case of emergency, such as a break in a canal wall, extreme high water or an accident. They also allow sections of the canal to be drained for maintenance and winter freeze protection.



POWER HOUSES

Power houses, installed in the early 20th century, are distinctive white buildings found at most locks where electricity was once generated to power the lock gates and valves. Today, equipment is powered by the local electric distribution system.



MACHINERY CABINETS

Machinery cabinets are the blue and yellow cabinets that display the lock number. They house the motors and gears that operate the lock gates and valves.



VESSELS

A variety of Canal Corporation vessels engage in operations and maintenance. Painted in our classic blue and yellow, our workforce uses these boats to keep the Canal System safe and operational.

Preparing for Navigation

All boaters must adhere to the United States Coast Guard (USCG) Inland Navigation Rules.

NAVIGATION SEASON

Canal waterways typically open for navigation in mid-May and close in mid-October. Travel on the canals is subject to changing water, weather and operating conditions.

The hours of operation for locks and lift bridges are set in conjunction with Eastern Daylight Savings Time and posted at canals.ny.gov. Closures in season may be necessary, so check conditions at canals.ny.gov.

LOCKING FEES

For the most up-to-date information about locking fees, visit canals.ny.gov.

NOTICE TO MARINERS

The Canal Corporation issues a “Notice to Mariners” when needed to identify openings/closures, water levels, construction, hazards and other elements affecting navigation.

These notices are posted at canals.ny.gov. They are also available via email and text. To sign up, visit canals.ny.gov.

NAVIGATION CHARTS

The Canal Corporation recommends boaters carry on board the latest edition of navigation charts on board for the New York State Canals (Chart #14786). Navigation charts may be obtained through the National Oceanic and Atmospheric Administration (NOAA). Note: There are no NOAA charts available between mile 222 and mile 337 of the Erie Canal (including the Genesee River).

BOATING REGISTRATION REQUIREMENTS

Federal and state laws require any pleasure boat propelled wholly or in part by mechanical means operated on the waters of New York State be registered with and display its validation sticker from the State Department of Motor Vehicles.

In accordance with New York State’s Brianna’s Law, **all operators of motorized watercraft must complete a state-approved boating safety course.**



NO SEWAGE

No sewage may be discharged into the Canal System. In addition, no gray water may be discharged into Lake Champlain.

SAILBOAT MAST STEPPING

The minimum clearances of overhead structures (bridges, guard gates and utilities) range from 15 feet, 5 inches to 21 feet for different sections along the canals, requiring sailboats to demast prior to entering the canal waterways.

Sailors looking to cruise within the canal waterways, instead of transiting through, may store their masts and rigging (to conserve deck space), and may leave them at select facilities. Contact the local chamber of commerce or tourism information office near your location of entry to the Canal waterways for an up-to-date listing of marinas that provide these services.

STOP THE SPREAD OF INVASIVE SPECIES

CLEAN. DRAIN. DRY.

New York State Department of Environmental Conservation regulations prohibit boats from launching or leaving launch sites without draining and cleaning visible plant and animal material from their boat, trailer and other equipment. Follow these guidelines to stop the spread:

1. Inspect your boat, trailer and other equipment, and remove any visible mud, plants, fish or animals before transporting.
2. Eliminate all water from equipment before transporting.
3. Clean and dry anything that comes in contact with the water, including boats, trailers and all boating and fishing equipment.
4. Disinfect if you cannot dry equipment.
5. Never release plants, fish or animals into a body of water unless they came out of that body of water.

U.S. AND CANADIAN CUSTOMS REPORTING

Masters of foreign flag vessels must report arrivals to the Canal System immediately to **U.S. Customs and Border Protection (CBP)** at the first U.S. port of entry. Any boater entering Canadian waters must contact a Canadian Customs reporting station at their first opportunity.

U.S. CUSTOMS*

To report your entry on U.S. waterways or for more information, contact:

U.S. Customs: 1-800-827-2851
Or visit the U.S. Customs website.

CBP Reporting Offsite Arrival—Mobile (ROAM)

The CBP ROAM app is a free mobile app for recreational boaters to report their U.S. entry to CBP via their personal smart device. In limited areas, travelers arriving in remote areas may be eligible to use the CBP ROAM app to apply to become Verified Travelers (which includes existing LBO, SVRS and I-68 numbers) for expedited processing on future arrivals.

For questions or concerns about the CBP ROAM app, email cbproam@cbp.dhs.gov.

CANADIAN CUSTOMS*

For information on entering Canadian waterways, contact:

Telephone Reporting Centre (TRC):
1-888-226-7277

NEXUS telephone reporting line:
Toll free: 1-866-99-NEXUS
(1-866-996-3987)

Border Information Service (BIS):
Toll free: 1-800-461-9999

** Subject to change.*

Safety

STAY CLEAR OF DAMS

Boaters, paddlers and all canal waterway visitors are advised to exercise extreme caution and stay clear of ALL dams.

RIGHT OF WAY

While motor boats, commercial vessels, tour boats and personal watercraft such as jet skis, kayaks, canoes and paddle boards all share the waterways, **commercial vessels have the right of way.** Stay clear, as they move a lot faster than expected and can produce significant wakes. Stay to the right when navigating past oncoming traffic and avoid creating wakes when passing people-powered watercraft.

CANAL SPEED LIMITS

Boaters must obey the speed limit signs posted throughout the canal waterways. Speed limits are established to minimize wake damage to residential property and canal



infrastructure, while ensuring that all canal users—boaters, paddlers, rowers, anglers, etc.—have a safe and enjoyable experience.

Boaters who exceed speed limits may be denied passage and be subject to fines.

Speed limits established for the canal waterways do not necessarily apply to some of the rivers and lakes which comprise part of the Canal System. Boaters navigating these bodies of water should comply with all aspects of U.S. Coast Guard Inland Navigation Rules and New York State Navigation Law and local ordinances and advisories.

A CHART OF NYS CANAL SYSTEM SPEED LIMITS CAN BE FOUND ON PAGES 21-29.

How to “Lock Through” Canal Locks



NAVIGATIONAL AIDS

Navigational aids on the Canal System conform to the U.S. Coast Guard lateral system of buoys (red right return). Buoys reverse from red on starboard to red on port, north of Champlain Lock 12 at Whitehall and on the entire length of the Oswego Canal.

Failures and displacements of navigational aids may occur. Report discrepancies in navigational aids to the Canal Corporation Incident Call Center 24/7 at **1-833-538-1042**.

For a complete list of navigation information for the waterways, including mileage, depth and width, visit **canals.ny.gov** and search Navigation Information.

For up-to-date alerts on critical or navigation conditions on canal waterways, visit **canals.ny.gov** and search Canal Alerts. You can also sign up to receive Canal Alerts by email and/or text at the Alerts webpage.

EMERGENCIES

To report an emergency along the Canal System, call **911**. If time and conditions permit, call the Canal Corporation at **1-518-449-6024**. Safety in an emergency is the top priority.



APPROACHING THE LOCK

When approaching a lock, boaters must stop at a safe distance (look for the blue 300 foot line) and advise the lock operator of your approach via marine band radio Channel 13, call using a mobile phone or sound three horn blasts

to signal a request for service. Lock operators will respond using clearly visible access lights. A red light indicates the lock is not ready. A green light indicates the lock is ready and a boater may advance. If there is no light, boaters must wait or tie up to the approach wall. Before entering the lock, check that fenders are properly positioned.



ENTERING THE LOCK

Once the green light is given, a boater may enter the lock slowly and stay in line of approach. In the lock chamber, boats should be stationed along the lock wall as directed by the lock operator.

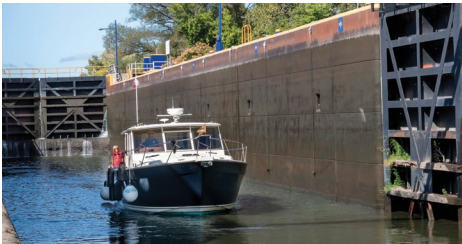


IN THE LOCK CHAMBER

During the lockage, bow and stern should be kept close to the lock chamber wall by holding the lines provided on the lock chamber walls or by looping a line to the lock chamber's holding apparatus (pipes or cables).

Continued

DO NOT TIE LINES. Serious injury can result from using hands and feet to fend a moving boat off a wall. Use a boat hook, paddle or oar. Do not wrap lines around hands or feet as lines may tighten and cause injury.



EXITING THE LOCK

As soon as the water in the lock chamber reaches the proper level, the gates will be open. Lines should be taken in when lock gates are fully open and boaters should then shove off away from the wall. Proceed slowly out of the lock chamber. Observe “lock limit” speed before increasing to cruising speed.

LOCK AND LIFT BRIDGE PHONE NUMBERS CAN BE FOUND ON PAGES 20-28.

New York and Canadian Canals



NYS New York State Canal Segments	CAN Canadian Canal Segments
New York State Canal System	Canadian Canals
Canalway Trail – Erie	Cities
Canalway Trail – Champlain	0 25 50 Miles
Interstate Highway	0 25 50 Kilometers
Canal Lock	N
Lift Bridge	

CANAL CORPORATION PRIMITIVE CAMPSITES*

Section 1 Fort Edward **518-747-4613**

C4 Stillwater

947 Stillwater Bridge Road
Schaghticoke, NY 12154
Cycler Access – Yes (.5 mile
detour off trail in Stillwater)

C9 Smith's Basin

2450 State Route 149
Fort Ann, NY 12827
Cycler Access – Yes (on trail)

Section 2 Waterford **518-233-8575**

Guard Gate 2

Riberty Lane
Waterford, NY 12188
Cyclist access – Yes (2.4 mile
detour off trail in Waterford)

Lock E7 Vischer Ferry

1280 Lock 7 Road
Niskayuna, NY 12309
Cycler access – Yes
(.3 mile detour off trail,
take Lock 7 Access Road)

Section 3 Fonda **518-853-3823**

E9 Rotterdam

9 State Canal Park Road (Rte
103) Rotterdam Jct., NY 12150
Cycler access – Yes (on trail)

E15 Fort Plain

84 Otsquago Club Road
Fort Plain NY 13339
Cycler access – Yes (on trail)

Section 4 Rome **315-329-1878**

E16 St. Johnsville

171 Mindenville Drive
Fort Plain, NY 13339
Cycler access – Yes (on trail)

E20 Whitesboro

9028 River Road
Marcy, NY 13403
Cycler access – Yes (on trail)

E21 New London

7176 Lock Road
Rome NY 13440
Cycler access – Yes (on trail)

Section 5 Lysander **315-695-2210**

E23 Brewerton

9651 Lock Road
Brewerton, NY 13029
Cycler access – No

Section 6 Lyons **315-871-4300**

E25 Mays Point

546 South Mays Point Road
Savannah, NY 13146
Cycler access – Yes (on trail)

CS1 Cayuga

6869 River Road
Cayuga, NY 13034
Cycler access – No

CS2-3 Seneca Falls

9 Seneca Street
Seneca Falls, NY 13148
Cycler access – No

Lock E28B Newark

116 N Clinton Street
Newark, NY 14513
Cycler access – Yes (on trail)

Lock 30 Macedon

10 Route 350
Macedon, NY 14513
Cycler access – Yes

Section 7 Pittsford **585-586-6877**

E33 Rochester

1205 Edgewood Avenue
Rochester, NY 14618
Cycler access – Yes (on trail)

*May be subject to change.



Staying at Canal Facilities

CYCLER-HIKER-BOATER PRIMITIVE CAMPSITES

The Canal Corporation offers 16 Cycler-Hiker-Boater campsites along the Canalway Trail and canal waterways. The campsites make touring easier for trail users, boaters and paddlers during the navigation season (May-October).

The campsites are considered “primitive,” with limited on-site amenities. Porta potties are provided at these campsites, but visitors should be prepared with their own potable water, first aid kits and camping and cooking supplies. “Carry In, Carry Out” applies to all waste and trash.

The campsites include an area for four tents. Stays are limited to 48 hours and are available on a first-come, first-served basis.

Several days in advance of your trip, contact the section office during business hours (7 a.m.–3:30 p.m.) to confirm the campsite is open. We recommend you also inquire about gate hours, parking locations, boat or paddle access, hand launches and any other questions to get a good awareness of campsite conditions.

Upon arrival, seek out the lock operator, if available, to notify them of your intent to camp. Then take a one-minute survey using the posted QR code.

Find complete camping rules and further information by searching [Camping at canals.ny.gov](http://Camping.at.canals.ny.gov).

MOORING AT CANAL CORPORATION FACILITIES

Under the New York Codes, Rules and Regulations, boats may moor at a Canal Corporation-owned dock or terminal for up to 48 hours in a calendar month. Such mooring is free of charge. Boaters wishing to moor in excess of 48 hours must apply for a permit from the Canal Corporation. Unless extenuating circumstances exist, such permits are usually granted only to commercial and other non-recreational vessels. For permit information, call 518-449-6000.

OTHER PUBLIC CAMPING NEAR THE CANALWAY TRAIL

Look online for New York State Office of Parks, Recreation and Historic Preservation or the New York State Department of Environmental Conservation, and search Camping.

- Verona Beach State Park
- Cayuga Lake State Park
- Green Lakes State Park
- Visit I LOVE NEW YORK and search Camping

Things to See and Do

Get off your boat to further enrich your travels on canal waterways. Whether by foot, cycling, kayak or even ride-share, experience the natural beauty of New York State or enjoy a relaxing day of recreation walking the Canalway Trail.

Visit canal communities to find lively main streets and surrounding neighborhoods filled with charming shops, historic points of interest and inspirational new sites, beautiful places to stay, outdoor art, great music and restaurants in every price range.

Areas along the canals are also home to a wealth of cultural heritage sites, including world-class museums, national parks, national and state historic landmarks, canal features and vessels, grand theaters, local galleries and a 100-mile mural trail.

STATE PARKS

There are 24 state parks on or close to the canal waterways. State parks typically offer docks, parking areas, trails and restrooms. Some include beaches, swimming pools and playgrounds. Most state parks charge vehicles a day use fee and may also charge for boat launches, picnic shelter reservations and other amenities.

Many state parks allow camping, and reservations are strongly recommended. For more information about locations, fees, hours and facilities, visit New York State Department of Parks, Recreation and Historic Preservation's website.

LOCAL TOURISM INFORMATION OFFICES AND CHAMBERS OF COMMERCE

The richest sources of up-to-date information on boater services, including marinas and mast-stepping facilities, events, lodging, restaurants and much more are tourism information offices, welcome centers and chambers of commerce along the canal waterways.

Find them on the web and get the information you want before you travel or during your visit.

TRAILS

Walking, cycling or even snowshoeing the Canalway Trail (which is mostly off road) encourages physical and mental wellness, as it provides a great way to stay in shape in a peaceful, stunning natural environment for enjoying the outdoors.

About 150 miles of the approximately 420-mile Canalway Trail is on Canal Corporation-owned land and includes trails along the Erie and Champlain canals.

The Erie Canalway and Champlain Canalway trails are part of the 750-mile Empire State Trail. It is the longest multi-use recreational trail in the nation, extending north from New York City to Canada and west from Albany to Buffalo.

FISHING

From the canal waterways to adjacent Lake Ontario tributaries in Western New York, there are a wide variety of fishing opportunities for anglers of all ages and experience levels.

Especially thrilling is the fall fishing in the Lake Ontario tributaries. The Canal Corporation times releases of Erie Canal water into the tributaries as part of draining the canal for winter. The additional water attracts more fish to swim up the tributaries from Lake Ontario and also improves the habitat for the fish.

This creates a world-class fishing experience—attracting large salmon, brown trout and steelhead to the region and boosting economic development from increasing numbers of anglers.

Common catches across the state include walleye, northern pike, small and large mouth bass, trout, salmon and carp. You can review an up-to-date schedule and learn more about the program at our website.



On the Canals offers a seasonally changing series of free, inclusive recreational adventures, cultural experiences and educational activities in canal communities to invite more residents and visitors to experience the waterways.

Adventure providers are encouraged and supported by program managers to offer adaptive equipment alongside standard equipment provided for experiences like kayaking, biking, hiking and painting, so everyone can enjoy fun on the canals.



Locks, Lift Bridges & Guard Gates

HUDSON RIVER

(Prior to entering the Canal System. This facility is owned by a non-Canal Corporation entity.)

MILE	NAME/ LOCATION	PHONE	Travel Time	Speed Limit
0.0	Troy Federal Lock	518-272-6442	35 min. to Lock C1 15 min. to Lock E2	If no speed limit posted, operate so as not to endanger others or yourself.

CHAMPLAIN CANAL

MILE	NAME/ LOCATION	PHONE	Travel Time	Speed Limit
3.43	C1 Waterford	518-237-8566	25 min. to Lock C2	30 mph
7.37	C2 Halfmoon	518-664-4961	15 min. to Lock C3	30 mph
9.92	C3 Mechanicville	518-664-5171	15 min. to Lock C4	30 mph
11.76	C4 Stillwater	518-664-5261	1 hour, 30 min. to Lock C5	10mph (C4 to C4 cut) 45 mph (C4 cut to C-5)
26.17	C5 Northumberland	518-695-3919	25 min. to Lock C6	10 mph (C5 to Northumberland) 45 mph (Northumberland to C6)
29.90	C6 Fort Miller	518-695-3751	45 min. to Lock C7	10 mph (C6 to Crocker's Reef) 45 mph (Crocker's Reef to C7)
37.03	C7 Fort Edward	518-747-4614	15 min. to Lock C8	5 mph
39.21	C8 Fort Edward	518-747-5520	35 min. to Lock C9	10 mph
45.04	C9 Smith's Basin (There is no Lock C10)	518-747-6021	55 min. to Lock C11	10 mph
54.28	C11 Comstock	518-639-8964	40 min. to Lock C12	10 mph
60.72	C12 Whitehall	518-499-1700	You've entered Lake Champlain	See navigation regulations affecting Lake Champlain

ERIE CANAL

MILE	NAME/ LOCATION	PHONE	Travel Time	Speed Limit
0.63	Lock E2 Waterford*	518-237-0810	2 hours to Lock E6*	5 mph
1.09	Lock E3 Waterford	518-237-0812	*Once you enter the locks from either E2 or E6, you must complete the entire flight.	5 mph
1.60	Lock E4 Waterford	518-237-0818		5 mph
1.87	Lock E5 Waterford	518-237-0821		5 mph
2.15	Lock E6 Waterford	518-237-4014		1 hour, 5 min. to Lock E7
13.07	Lock E7 Niskayuna	518-374-7912	1 hour, 5 min. to Lock E8	45mph
24.04	Lock E8 Scotia	518-346-4631	30 min. to Lock E9	45mph
29.07	Lock E9 Rotterdam	518-491-8205	37 min. to Lock E10	45mph
35.02	Lock E10 Cranesville	518-887-5450	25 min. to Lock E11	45 mph
39.29	Lock E11 Amsterdam	518-843-2120	30 min. to Lock E12	45 mph
43.52	Lock E12 Tribes Hill	518-829-7331	1 hour to Lock E13	30 mph
53.12	Lock E13 Yosts	518-922-6173	50 min. to Lock E14	30 mph
60.95	Lock E14 Canajoharie	518-673-3314	20 min. to Lock E15	30 mph
64.30	Lock E15 Fort Plain	518-993-4161	40 min. to Lock E16	30 mph
71.02	Lock E16 St. Johnsville	518-568-2636	50 min. to Lock E17	10 mph
78.99	Lock E17 Little Falls	315-823-0650	25 min. to Lock E18	5 mph (Lock E17 to Guard Gate #4) 10 mph (Guard Gate #4 to Lock E18)
83.19	Lock E18 Jacksonburg	315-823-2419	75 min. to Lock E19	10 mph
95.04	Lock E19 Frankfort	315-733-5041	1 hour to Lock E20	10 mph
105.32	Lock E20 Whitesboro	315-736-4617	1 hour, 50 min. to Lock E21	10 mph
123.42	Lock E21 New London	315-336-8229	6 min. to Lock E22	5 mph
124.74	Lock E22 New London	315-336-4329	2 hours, 55 min. to E23	No speed limit across Oneida Lake 10 mph (I-81 bridge through State Ditch Cut)
153.65	Lock E23 Brewerton	315-676-4171	1 hour, 55 min. to Lock E24	30 mph
172.42	Lock E24 Baldwinsville	315-635-3101	3 hours to Lock E25	30 mph
203.11	Lock E25 May's Point	315-365-3241	40 min. to Lock E26	30 mph
208.94	Lock E26 Clyde	315-923-9720	1 hour, 15 min. to Lock E27	10 mph
220.99	Lock E27 Lyons	315-946-4062	6 min. to Lock E28A	10 mph
222.27	Lock E28A Lyons	315-946-4410	25 min. to Lock E28B	10 mph

Continued

ERIE CANAL continued

MILE	NAME/ LOCATION	PHONE	Travel Time	Speed Limit	Lift Bridge Height
226.25	Lock E28B Newark	315-331-3296	1 hour to Lock E29	10 mph	NA
236.04	Lock E29 Palmyra	315-597-4691	18 min. to Lock E30	10 mph	NA
239.02	Lock E30 Macedon (There is no Lock E31)	315-986-5631	45 min. to Fairport Lift Bridge	10 mph	NA
246.67	Fairport Lift Bridge, Main Street [E-128]	585-223-9412	44 min. to Lock E32	10 mph	7' closed, 16.3' open
255.14	Lock E32 Pittsford	585-586-1837	6 min. to Lock E33	5 mph	NA
256.40	Lock E33 Rochester	585-244-2150	1 hour, 20 min. to Spencerport	10 mph	NA
271.28	Spencerport Lift Bridge, Union Street [E-174]	585-352-5451	17 min. to Adams	10 mph	3' closed, 17.0' open
274.21	Adams Basin Lift Bridge, Washington Street [E-178]	585-352-3548	27 min. to Park Avenue	10 mph	3' closed, 16.9' open
278.76	Park Avenue Lift Bridge, Brockport [E-181]	585-637-0460	2 min. to Main Street	10 mph	3' closed, 16.9' open
278.93	North Main Street Lift Bridge, Brockport [E-182]	585-637-4530	29 min. to Holley	10 mph	3' closed, 16.7' open
283.48	Holley Lift Bridge, East Avenue [E-187]	585-638-6456	18 min. to Hulberton	10 mph	3' closed, 16.7' open
286.58	Hulberton Road, Hulberton [E-191]	585-638-8183	36 min. to Ingersoll	10 mph	3' closed, 16.7' open
292.98	Ingersoll Street Lift Bridge, Albion [E-199]	585-589-4107	2 min. to North Main Street	10 mph	3' closed, 16.5' open
293.15	North Main Street Lift bridge, Albion [E-200]	585-589-6255	19 min. to Eagle Harbor	10 mph	3' closed, 16.5' open
296.41	Eagle Harbor Lift Bridge, Eagle Harbor Road [E-203]	585-589-0628	18 min. to Knowlesville	10 mph	3' closed, 16.5' open
299.47	Knowlesville Lift Bridge, Knowlesville Road [E-206]	585-798-2050	28 min. to Prospect Avenue	10 mph	3' closed, 16.5' open
304.13	Medina Lift Bridge, Prospect Avenue [E-211]	585-798-0140	29 min. to Main Street	10 mph	3' closed, 16.5' open
308.87	Middleport Lift Bridge, Main Street [E-216]	716-735-7250	31 min. to Gasport	10 mph	3' closed, 16.6' open
314.15	Gasport Lift Bridge, Gasport Road [E-222]	716-772-7700	35 min. to Adams Street	10 mph	3' closed, 16.6' open
319.92	Adam Street Lift Bridge, Lockport [E-229]	NA, always open	2 min. to Exchange	10 mph	3' closed, 16.6' open
320.12	Exchange Street Lift Bridge, Lockport [E-230]	716-434-7368	5 min. to Locks E34-35	10 mph	3' closed, 16.6' open
320.68	Locks E34-35 Lockport	716-434-3140	1 hour, 45 min. to Tonawandas	10 mph	NA

OSWEGO CANAL

MILE	NAME/ LOCATION	PHONE	Travel Time	Speed Limit
0.0	Erie Canal at Three Rivers	315-695-2281	12 min. to Lock O1	10 mph
2.15	Lock O1 Phoenix	315-695-2281	1 hour to Lock O2	10 mph
11.48	Lock O2 Fulton	315-592-4155	5 min. to Lock O3	5 mph
12.06	Lock O3 Fulton (There is no Lock O4)	315-592-5349	40 min. to Lock O5	10 mph
18.49	Lock O5 Minetto	315-343-5232	25 min. to Lock O6	10 mph
21.78	Lock O6 High Dam	315-343-9001	5 min. to Lock O7	5 mph
22.45	Lock O7 Oswego	315-343-6304	5 min. to Lock 8	5 mph
22.89	Lock O8 Oswego	315-343-0280	5 min. to Lake Ontario	See navigation regulations affecting Lake Ontario

CAYUGA-SENECA CANAL

MILE	NAME/ LOCATION	PHONE	Travel Time	Speed Limit
0.0	Erie Canal at Kipp Island	NA	10 min. to Lock CS1	30 mph
4.04	Lock CS1 Cayuga	315-253-7523	12 min. to Cayuga Lake breakwater 3 hours, 30 min. to Ithaca through Cayuga Lake (38 miles)	10 mph If no speed limit posted, operate so as not to endanger others or yourself. 5 mph Ithaca Navigation Channel
8.01	Locks CS2-3 Seneca Falls	315-568-5797	25 min. to Locks CS2-3 35 min. to Lock CS4	10 mph
12.31	Lock CS4 Waterloo	315-539-3242	30 min. to Seneca Lake breakwater (4.79 miles)	10 mph
NA	Seneca Lake	NA	3 hours to Watkins Glen through Seneca Lake (33 miles)	If no speed limit posted, operate so as not to endanger others or yourself. 5 mph Watkins Glen to Montour Falls Navigation Channel

All information presented is accurate as of 6/30/24.

NIAGARA RIVER

MILE	NAME/ LOCATION	PHONE	Lift Bridge Height
8.30	Black Rock Lock*	716-879-4403	NA
8.61	International Railroad*, Buffalo	716-876-5670	17'
9.77	Ferry Street*, Buffalo	716-851-5689	17'

*Lock and bridges owned by a non-Canal Corporation entity.

The speed limit along the Genesee River from the Erie Canal to Corn Hill Landing is 10 mph.

Onondaga Lake Cut speed limits:

- Junction to the Lake is 5 mph
- Onondaga Lake has no posted speed limit but, according to state regulations, operate so as not to endanger others or yourself.



EMERGENCIES

Call **911** to report an emergency along the Canal System.
For non-emergencies, call the Canal Corporation Incident
Call Center 24/7 at **833-538-1042**.

For more information on the New York State Canal
System, visit canals.ny.gov, call **1-800-4CANAL4** or
email info@canals.ny.gov.



New York State Canal Corporation
30 South Pearl St., Albany, NY 12207
info@canals.ny.gov

Facebook [@nycanals](https://www.facebook.com/nycanals) 
Instagram [@nyscanalcorp](https://www.instagram.com/nyscanalcorp) 
YouTube [@NYSCanalCorporation](https://www.youtube.com/NYSCanalCorporation) 
Find us on LinkedIn [in](https://www.linkedin.com/company/nyscanalcorp) 
X [@nyscanalcorp](https://twitter.com/nyscanalcorp) 