

Chillventa Specialist Forums 2024
Chillventa Fachforen 2024

**CONNECTING
EXPERTS.**



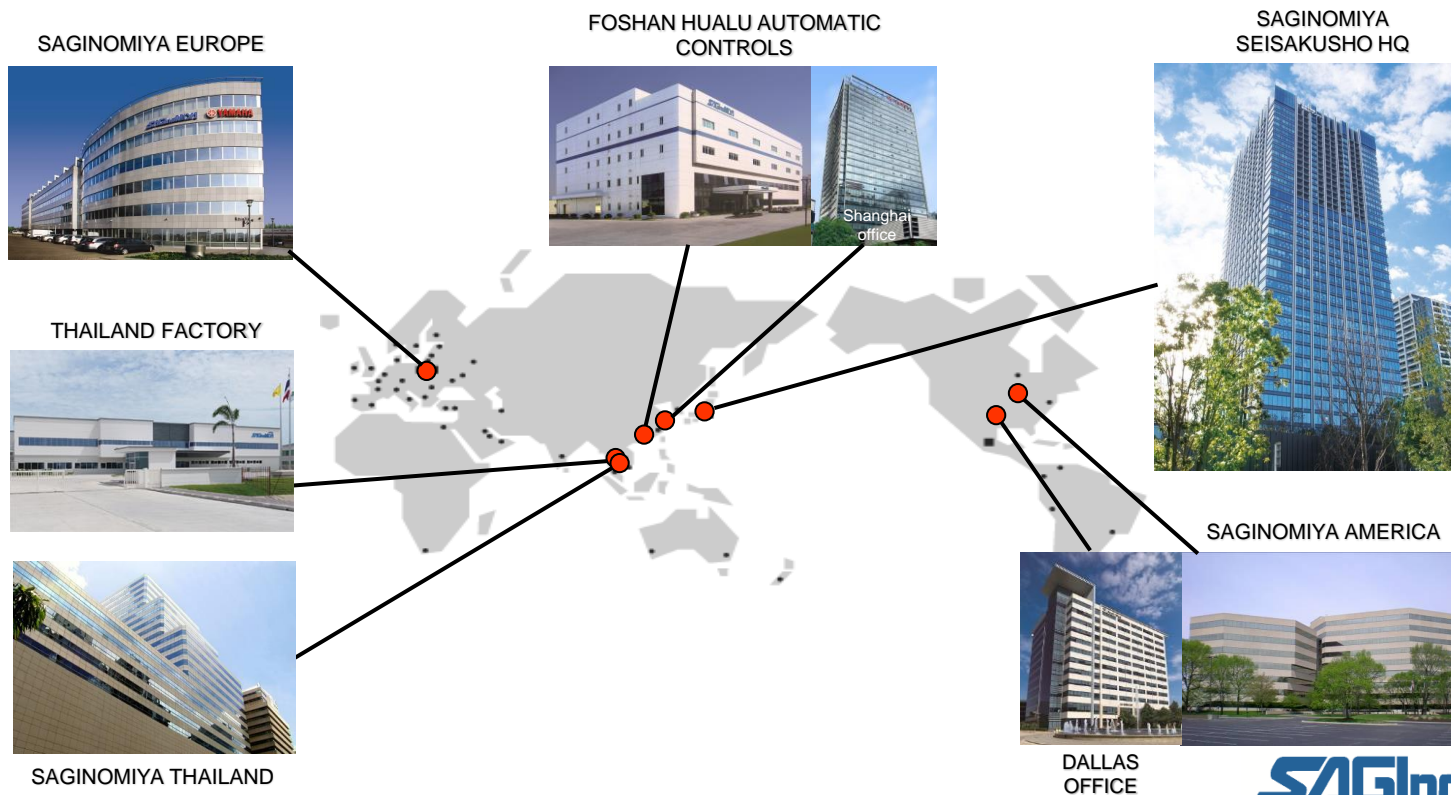


**Advantages of using Saginomiya components
in natural refrigerant units**

Advantages of using Saginomiya components in natural refrigerant units

SAGINOMIYA COMPANY PROFILE

CHILLVENTA



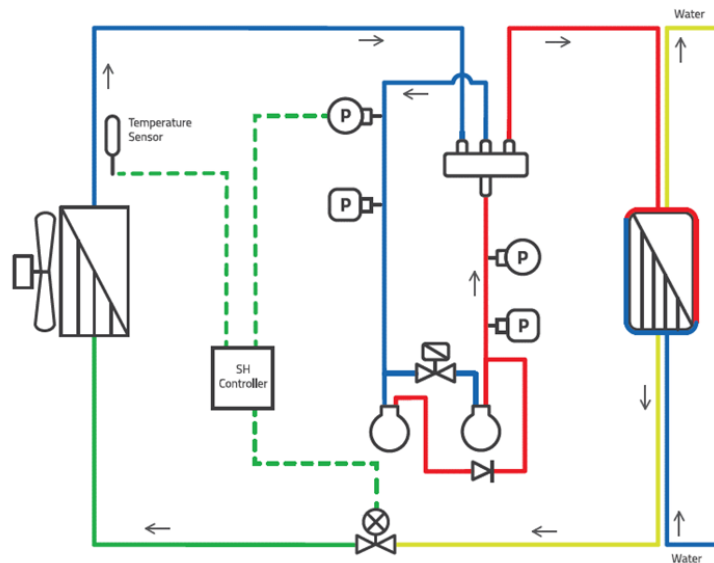
Advantages of using Saginomiya components in natural refrigerant units

COMPONENTS FOR A3 REFRIGERANTS

CHILVENTA

Building upon long experience in supplying components for A/C units, Saginomiya continues to grow and expand its presence in a whole range of various applications, including increasing application in Heat Pumps.

Based on experience we already have, we would like to take a look at the features of some of the key components for Heat Pumps that can affect the unit's performance, as well as help in design and manufacturing.



SAGInoMIYA

Advantages of using Saginomiya components in natural refrigerant units

COMPONENTS FOR A3 REFRIGERANTS

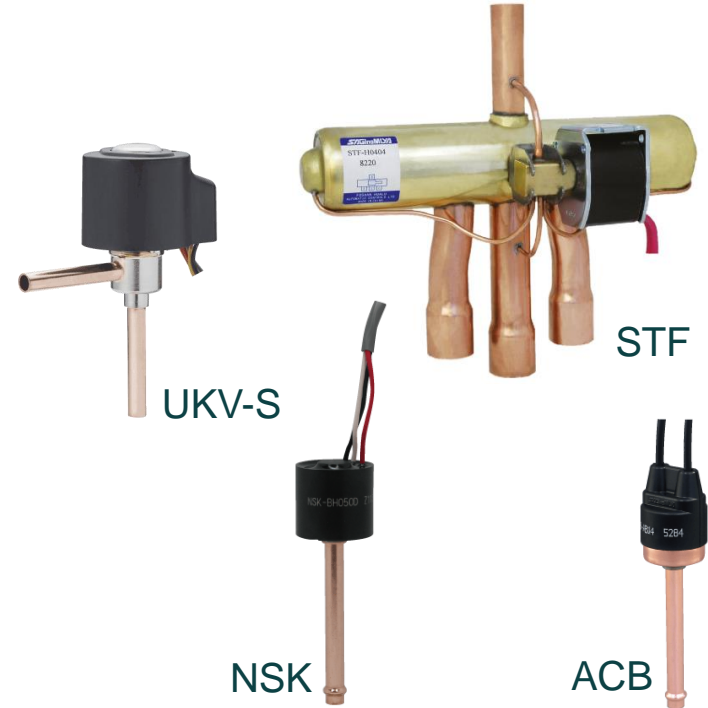
CHILVENTA

UKV-S & UKV-SH SERIES ELECTRONIC
EXPANSION VALVES

NSK SERIES PRESSURE SENSORS

ACB SERIES PRESSURE SWITCHES

STF SERIES 4-WAY REVERSING VALVES



SAGINOMIYA

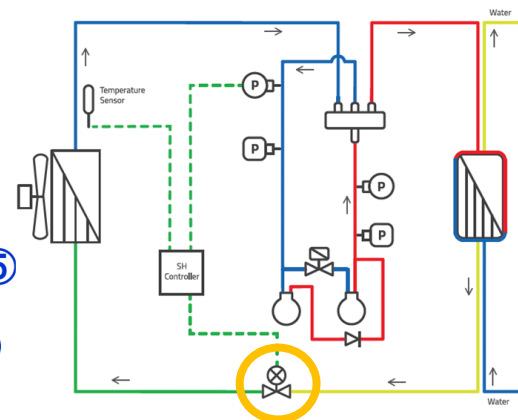
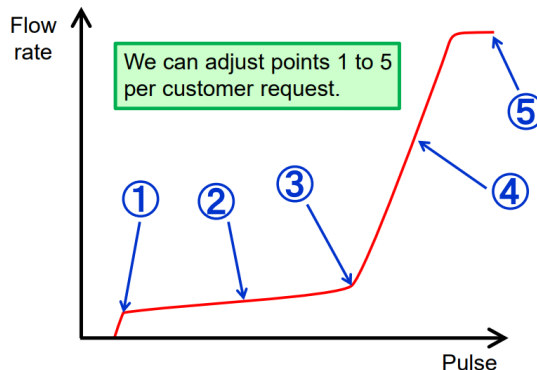
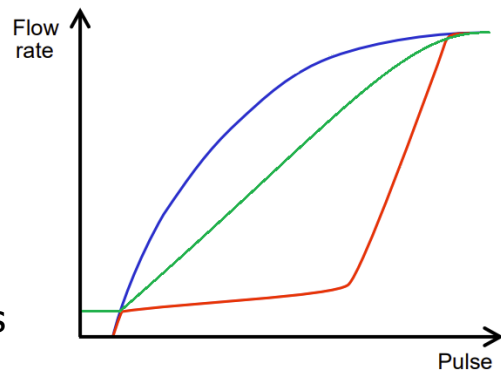
Advantages of using Saginomiya components in natural refrigerant units

UKV-S & UKV-SH SERIES ELECTRONIC EXPANSION VALVES

CHILLVENTA

Advantages:

- High MOPD
- Custom-made flow characteristics
- Compact design with various tube shapes
- Diversified production locations: Japan and Thailand
- Unipolar & bipolar control
- ATEX certified models available



SAGINOMIYA

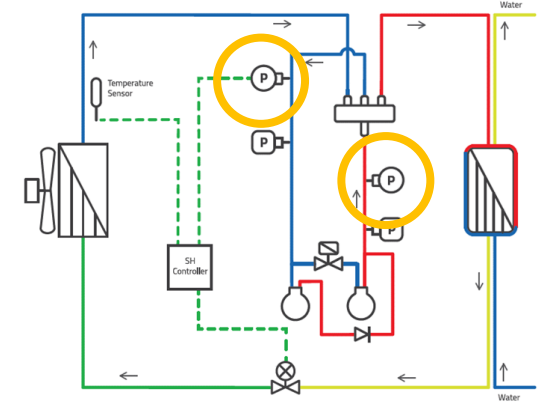
Advantages of using Saginomiya components in natural refrigerant units

NSK SERIES PRESSURE SENSORS

CHILVENTA

Advantages:

- High accuracy
- Possible calibration for specific temperature ranges
- Planned production in Poland from 2025
- Available with built-in cable
- Voltage and current output available
- ATEX certified models available



SAGInoMIYA

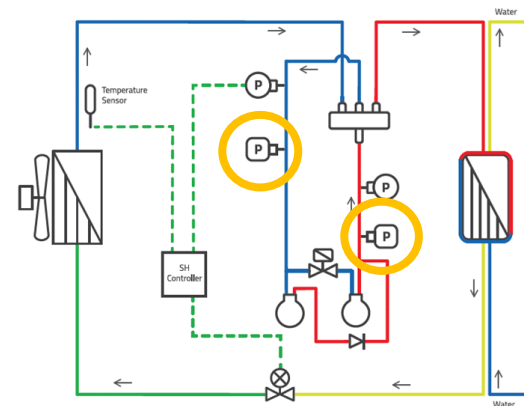
Advantages of using Saginomiya components in natural refrigerant units

ACB AND ACB-H SERIES PRESSURE SWITCHES

CHILVENTA

Advantages:

- Production in Poland
- Custom-made settings
- Various electrical and pressure terminations
- New high durability type ACB-H available: 500 000 cycles
- High setting stability
- ATEX certified models available



SAGInoMIYA

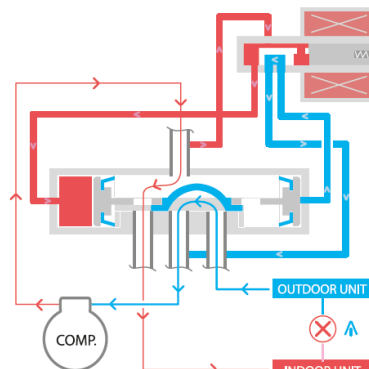
Advantages of using Saginomiya components in natural refrigerant units

STF SERIES 4-WAY REVERSING VALVES

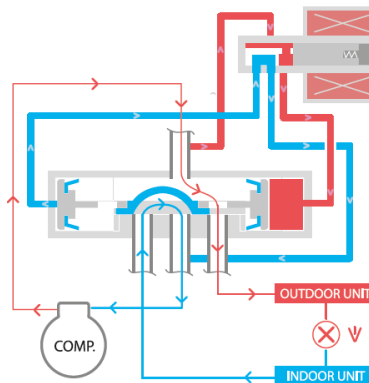
Advantages:

- Various slider constructions
- Improved PED category
- High refrigerant flow
- ATEX approval

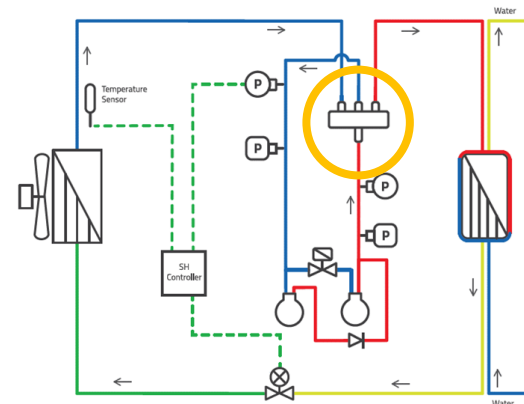
HEATING



COOLING



CHILVENTA



SAGInoMIYA

Advantages of using Saginomiya components in natural refrigerant units

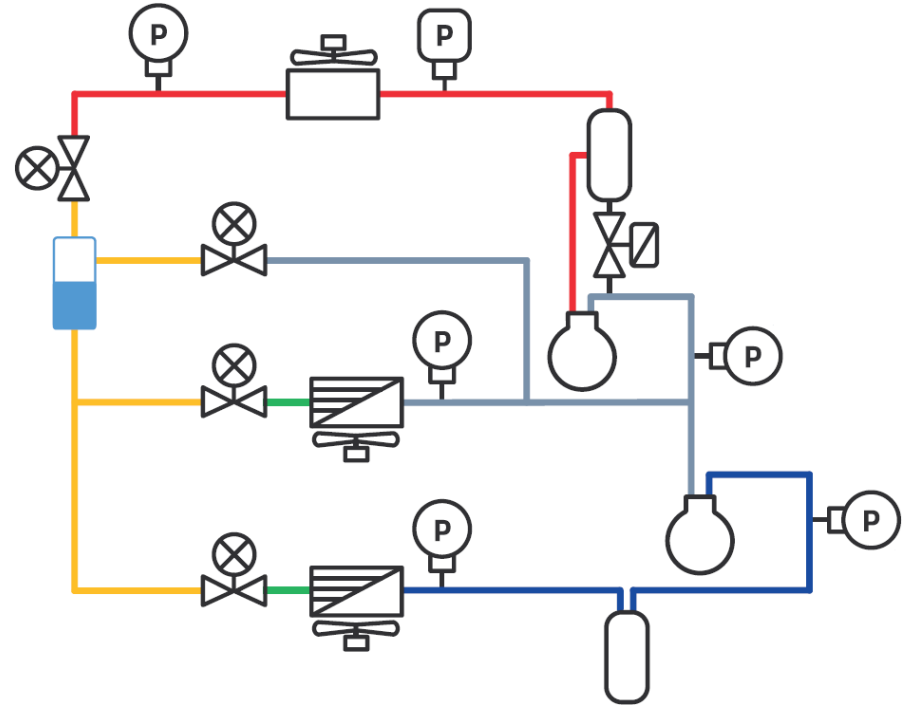
COMPONENTS FOR R-744 UNITS

CHILVENTA

Saginomiya R-744 components include Solenoid Valves, Electronic Expansion Valves, Pressure Switches and Pressure Sensors.

They were introduced as components for ECOcute R-744 Heat Pumps for water heating and have been used for this application since early 2000's.

In recent years, we see an increase in demand for components for other applications, which led to increased focus on development on Saginomiya's side, resulting in the introduction of new products.



SAGInoMIYA

Advantages of using Saginomiya components in natural refrigerant units

COMPONENTS FOR R-744 UNITS

CHILVENTA

UKV-J & JKV SERIES ELECTRONIC
EXPANSION VALVES

HPV SERIES SOLENOID VALVES

HSK SERIES PRESSURE SENSORS

CCB SERIES PRESSURE SWITCHES

CKB SERIES PRESSURE SWITCHES



UKV-J



HPV



HSK



CCB



CKB

SAGInoMIYA

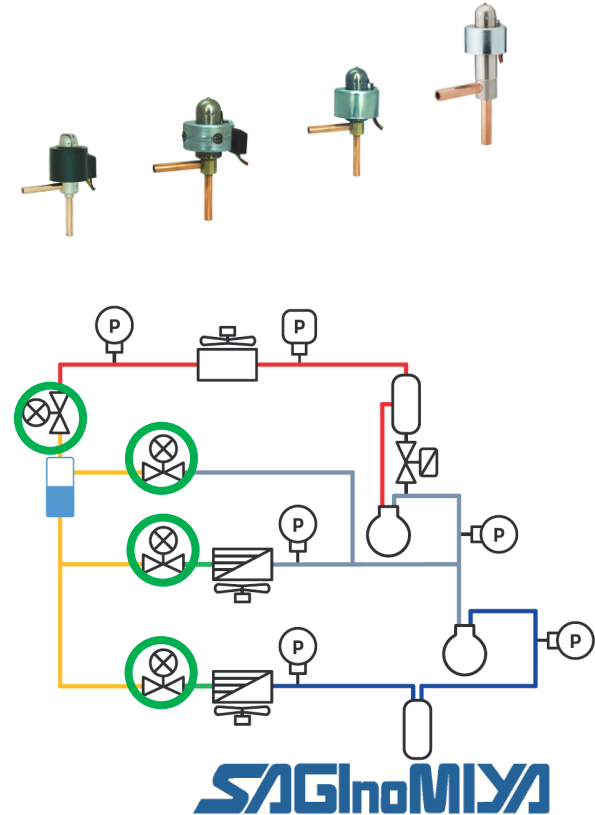
Advantages of using Saginomiya components in natural refrigerant units

UKV-J & JKV SERIES ELECTRONIC EXPANSION VALVES

CHILVENTA

Advantages:

- Permanent magnet type direct operating stepper motor
- Compact design with various tube shapes
- Custom-made flow characteristics for UKV-J
- High sealing construction
- Applicable for R-744 up to 150 bar



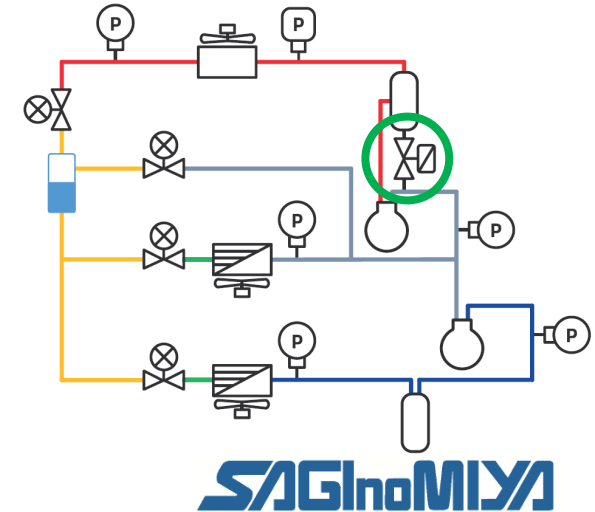
Advantages of using Saginomiya components in natural refrigerant units

HPV SERIES SOLENOID VALVES

CHILVENTA

Advantages:

- Applicable for various purposes in R-744 applications
- Wide range of flow rates
- Compact pilot type
- Available for pressures up to 150 bar



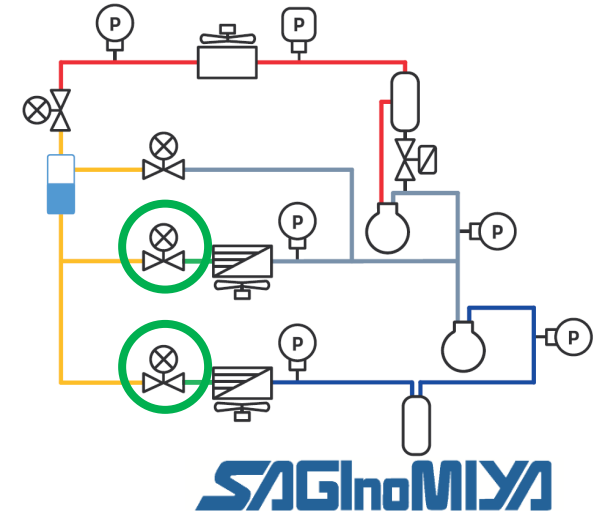
Advantages of using Saginomiya components in natural refrigerant units

HPV-E SERIES SOLENOID EXPANSION VALVES

CHILVENTA

Advantages:

- Applicable as PWM electronic expansion valves in R-744 refrigerated showcases
- Low operating noise
- High durability
- No solenoid valve or backup power supply required



SAGInoMIYA

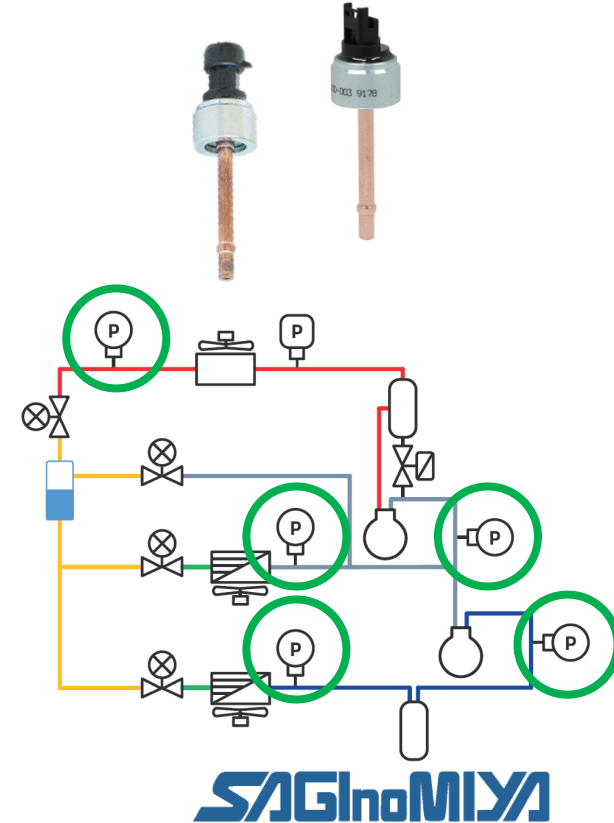
Advantages of using Saginomiya components in natural refrigerant units

HSK SERIES PRESSURE SENSORS

CHILVENTA

Advantages:

- Available for pressure up to 150 bar
- High accuracy
- Compact & lightweight design
- One chip pressure sensing element
- Voltage and current output
- Molded cable, Aptiv (Packard) or Molex electrical connector
- 1/4" or 6 mm solder connection



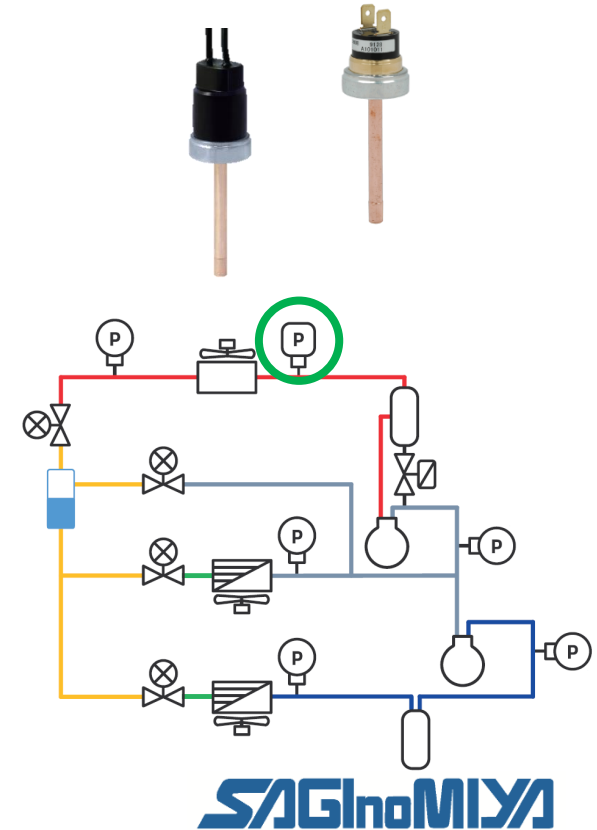
Advantages of using Saginomiya components in natural refrigerant units

CCB SERIES PRESSURE SWITCHES

CHILVENTA

Advantages:

- Designed to work as a direct cut-out for up to 4 A or controlling purpose signal from 10 to 50 mA
- IEC 60730-2-6 certification available from March 2025
- Applicable for pressure up to 165 bar
- Compact & lightweight design
- Waterproof version available (IP66)



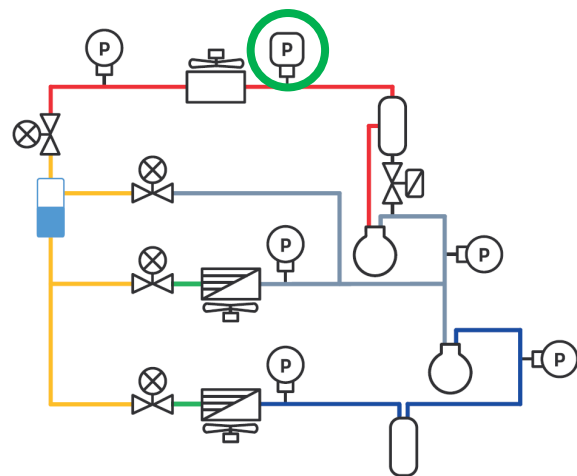
Advantages of using Saginomiya components in natural refrigerant units

CKB SERIES PRESSURE SWITCHES

CHILVENTA

Advantages:

- 10 bar minimum pressure differential
- +0/-8 % setting tolerance for compliance with EN 12263
- Production in Poland
- Wide setting range from 40 to 130 bar allowing use in sub- and transcritical circuits
- Manual reset type available
- High durability satisfying CE PED category IV
- Low pressure version for compliance with EN 12263:1998 standard available



SAGINOMIYA

Advantages of using Saginomiya components in natural refrigerant units

CONTACT INFORMATION

Visit us here

Hall 7A booth 530

Saginomiya Europe

Aleje Jerozolimskie 212
Warsaw, 02-486 Poland
info@saginomiya.eu
reco@saginomiya.eu

Saginomiya Seisakusho

8-2, Okubo 3-chome, Shinjuku-ku
Tokyo, 169-0072 Japan
inter@saginomiya.co.jp



CHILVENTA



Chillventa Specialist Forums 2024
Chillventa Fachforen 2024

**CONNECTING
EXPERTS.**

