

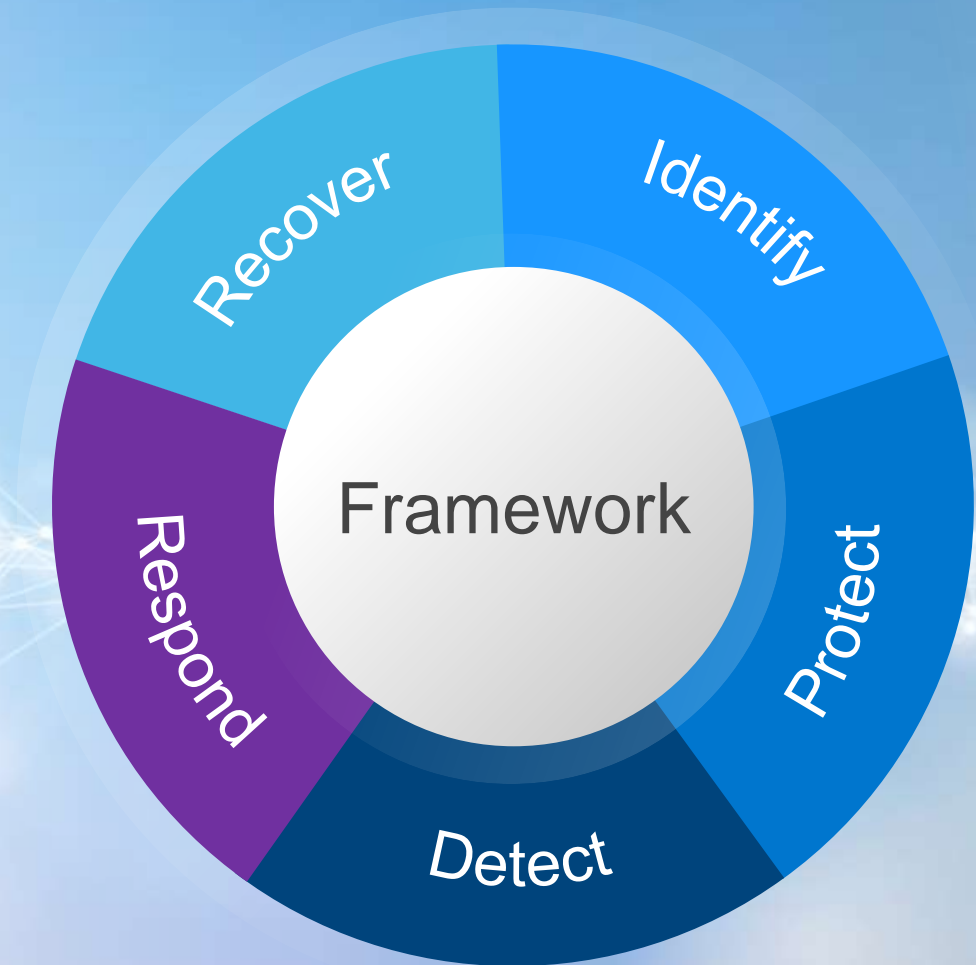
Cyber Recovery Vault

Dell Technologies – Data Protection Solutions
David Steinbrink

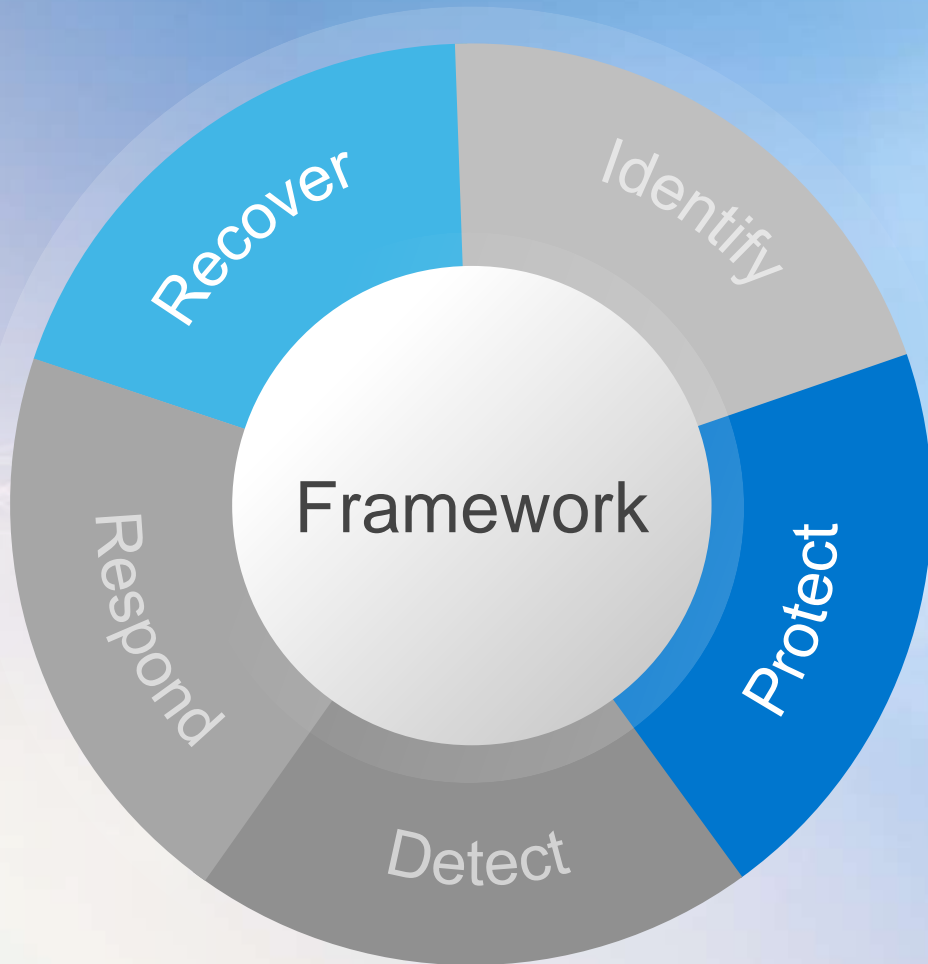
Cyber resilience is a strategy.

A high-level holistic strategy that includes cyber security standards, guidelines, people, business processes and technology solutions.

Example: [NIST Cybersecurity Framework](https://en.wikipedia.org/wiki/NIST_Cybersecurity_Framework)



Cyber Recovery is a solution.

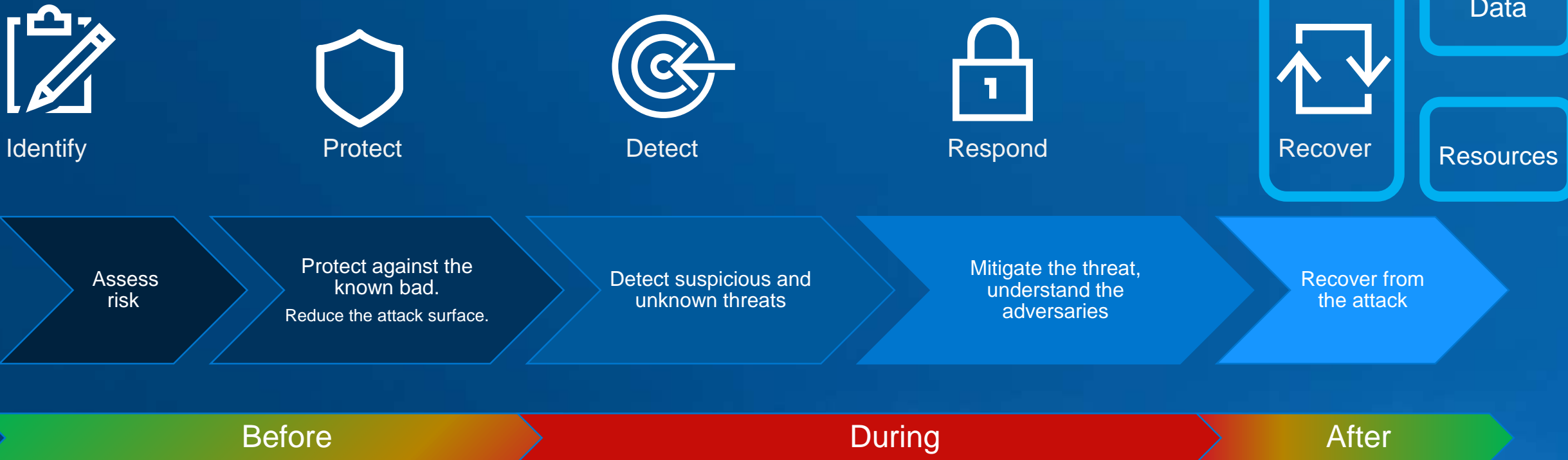


A data protection solution that isolates business-critical data away from attack surfaces.

Critical data is stored immutably in a hardened vault enabling recovery with assured data availability, integrity and confidentiality.

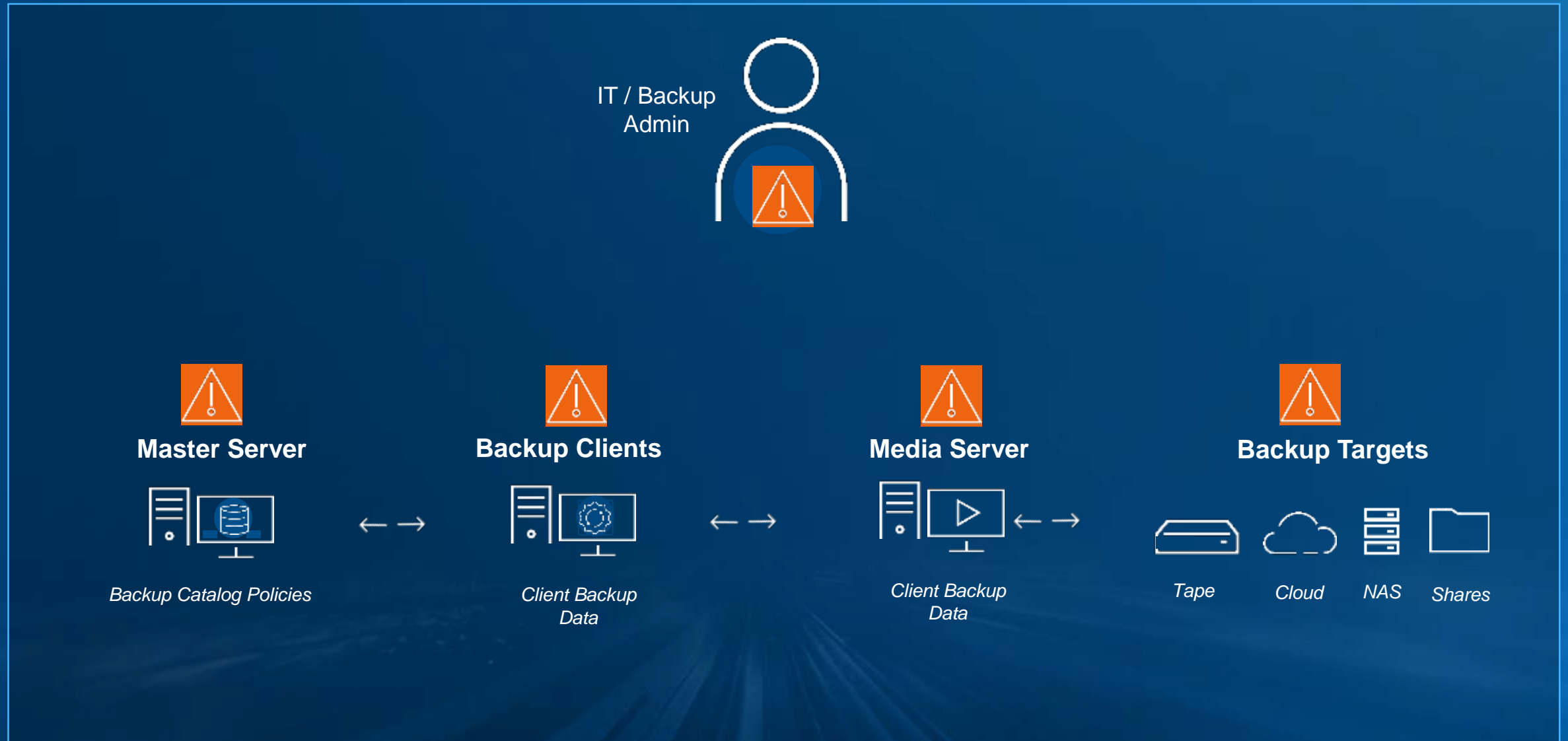
NIST Cyber Security Framework

A high-level holistic strategy that helps organisations:



Immutability is not offline

Cyber Attack Ziel: ... die Datensicherungen

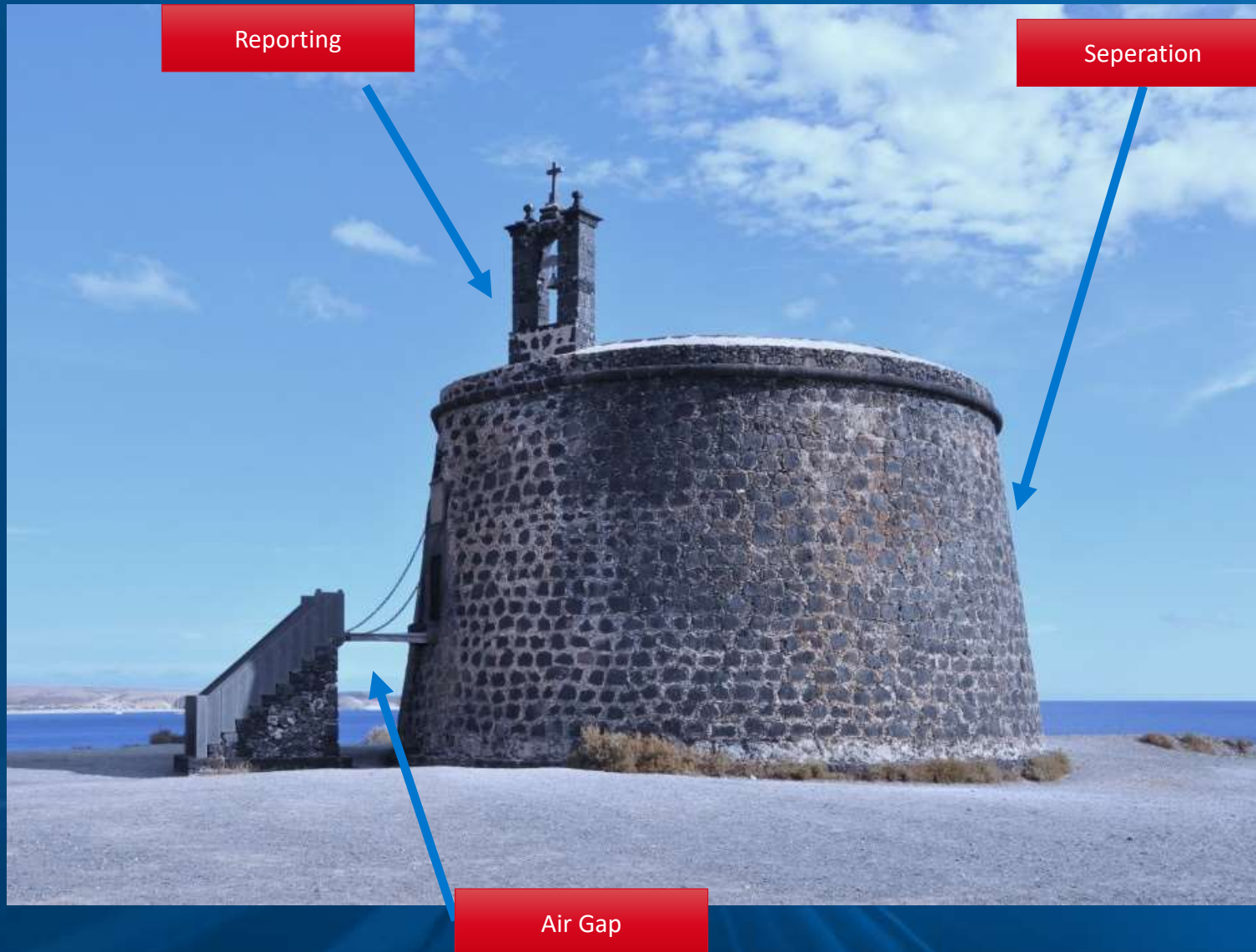


Cyber Recovery Requirements

Modern threats require modern solutions

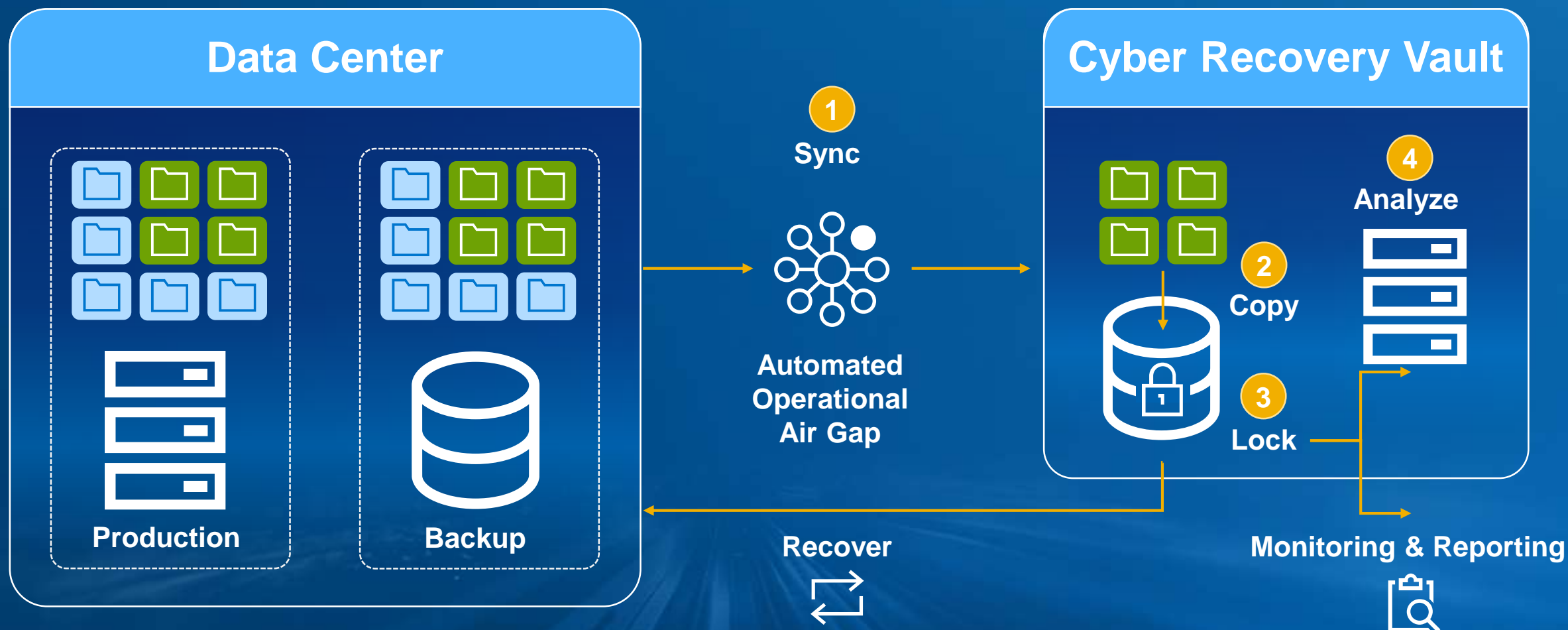


Cyber Recovery Vault



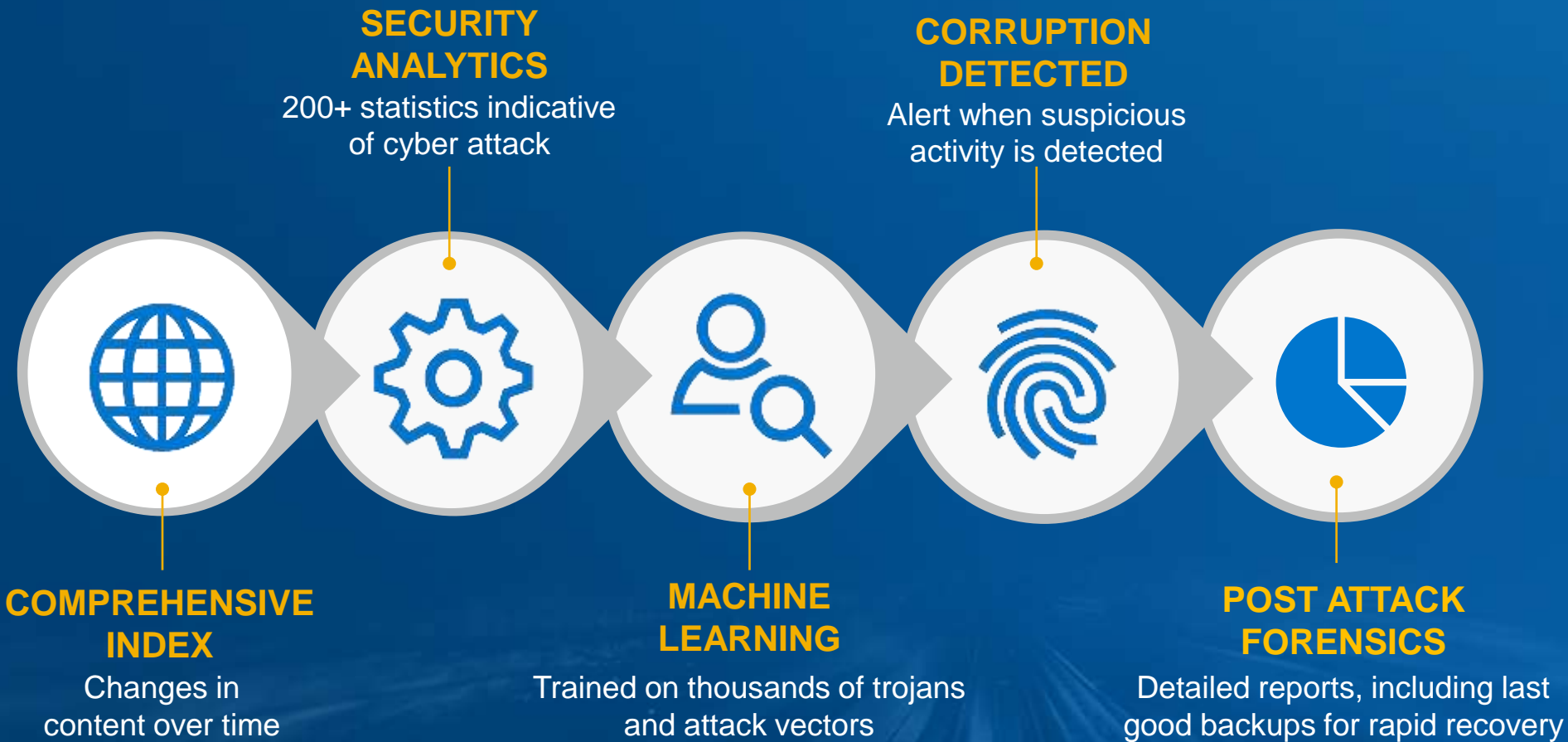
PowerProtect Cyber Recovery

Data Vaulting For Critical Data



How CyberSense Works

Machine learning enables early detection & rapid recovery from a cyber attack



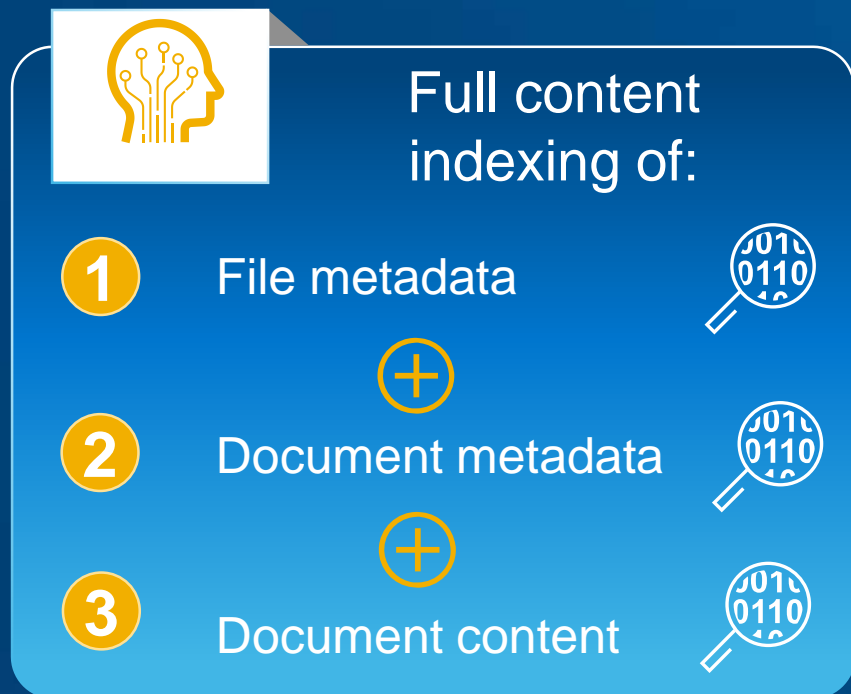
CyberSense Provides

- Attack vector notification
- Ransomware detection
- Corrupted file details
- Data changes / deletions
- Breached user accounts
- Breached executables
- Last good backup copy

Compare: CyberSense vs. “Basic” Analytics

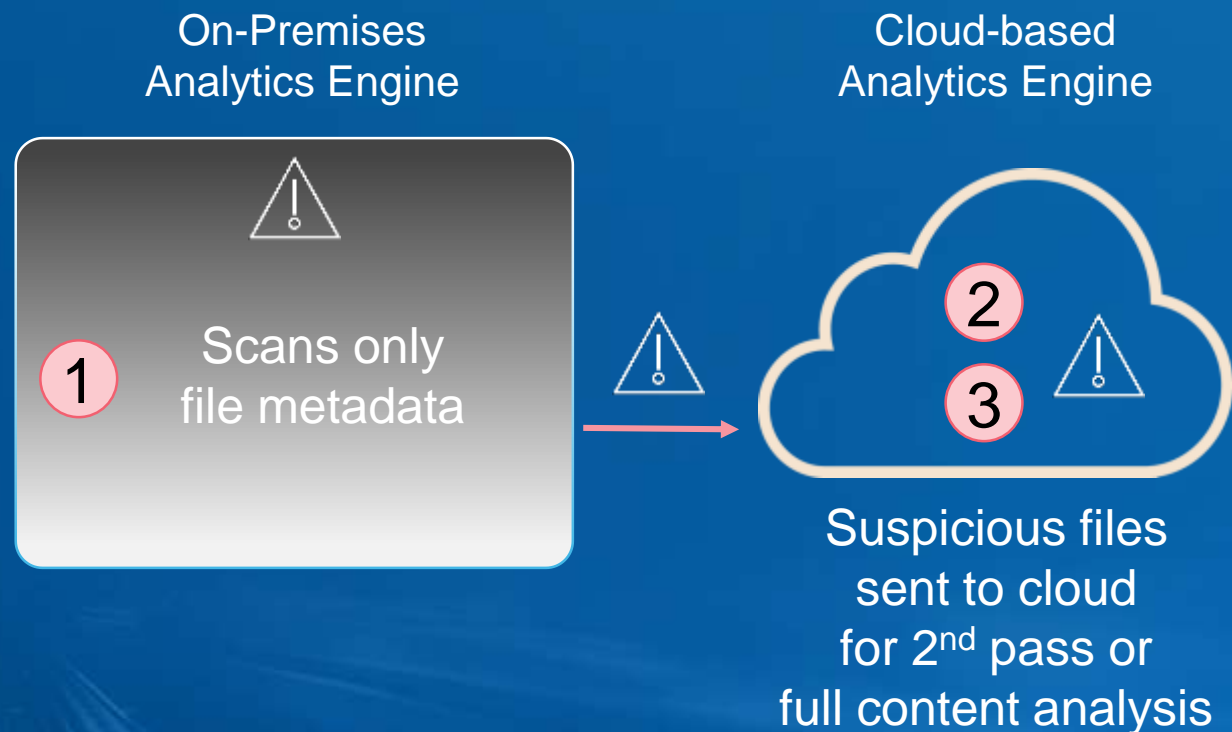
Machine learning enables early detection & rapid recovery within the Cyber Recovery vault

CyberSense:



VS.

Basic Analytics:



The logo for Dell Technologies, featuring the word "DELL" in a bold, sans-serif font, followed by "Technologies" in a lighter, sans-serif font. The "E" in "DELL" is stylized with three diagonal lines extending from its right side.