

Zero Trust

Oct 2022

Kurt Semba

Innovation Lead – Office of the CTO



Enterprises are on a journey of Digital Transformation

5 years to digitize or fail

Biz leaders: Those who don't digitalize quickly are doomed¹



54%

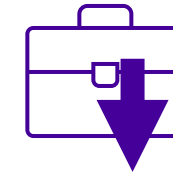
IT environments are more complex than two years ago²



82%

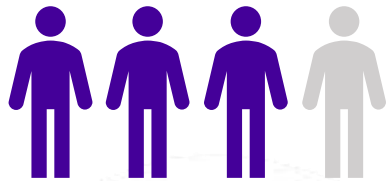
Of biz leaders will continue employee remote work³

IT skills shortage:



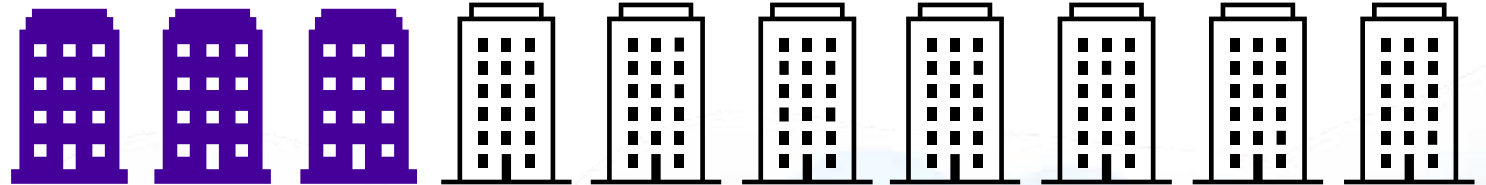
93%

Mid-market, global orgs have IT skills shortage²



3/4 biz leaders

Say digital capabilities helped with pandemic challenges¹



1/3

Of all workers worldwide will work remotely at times in 2022⁴

¹Deloitte, April 2021 <https://www2.deloitte.com/us/en/insights/topics/digital-transformation/digital-acceleration-in-a-changing-world.html>

²ESG, August 2021 <https://www.esg-global.com/research/esg-master-survey-results-network-modernization-trends> ³Deloitte, April 2021 <https://www2.deloitte.com/us/en/insights/topics/digital-transformation/digital-acceleration-in-a-changing-world.html>

³Gartner <https://www.gartner.com/en/newsroom/press-releases/2020-07-14-gartner-survey-reveals-82-percent-of-company-leaders-plan-to-allow-employees-to-work-remotely-some-of-the-time>

⁴Gartner <https://www.gartner.com/en/newsroom/press-releases/2021-06-22-gartner-forecasts-51-percent-of-global-knowledge-workers-will-be-remote-by-2021>

The user is on a journey

On Campus
Basic Connectivity



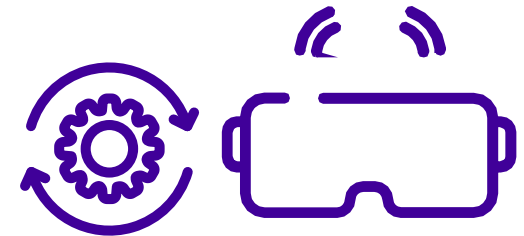
3 YEARS AGO

Working Remotely
Collaboration Apps
Cloud Storage Apps



TODAY

Hybrid Worker
VR/AR Apps
Autonomous Apps

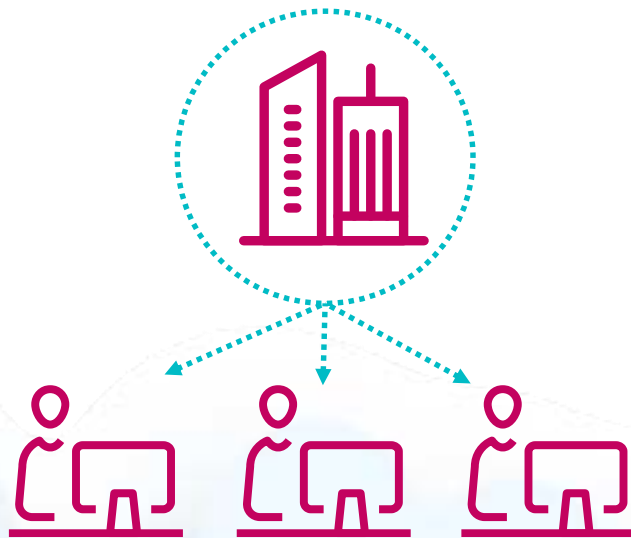


IN 3 YEARS

To solve the challenges, we need to shift our focus

PAST

IT Optimizes a
Campus Network



Users **go** to the
network



FUTURE

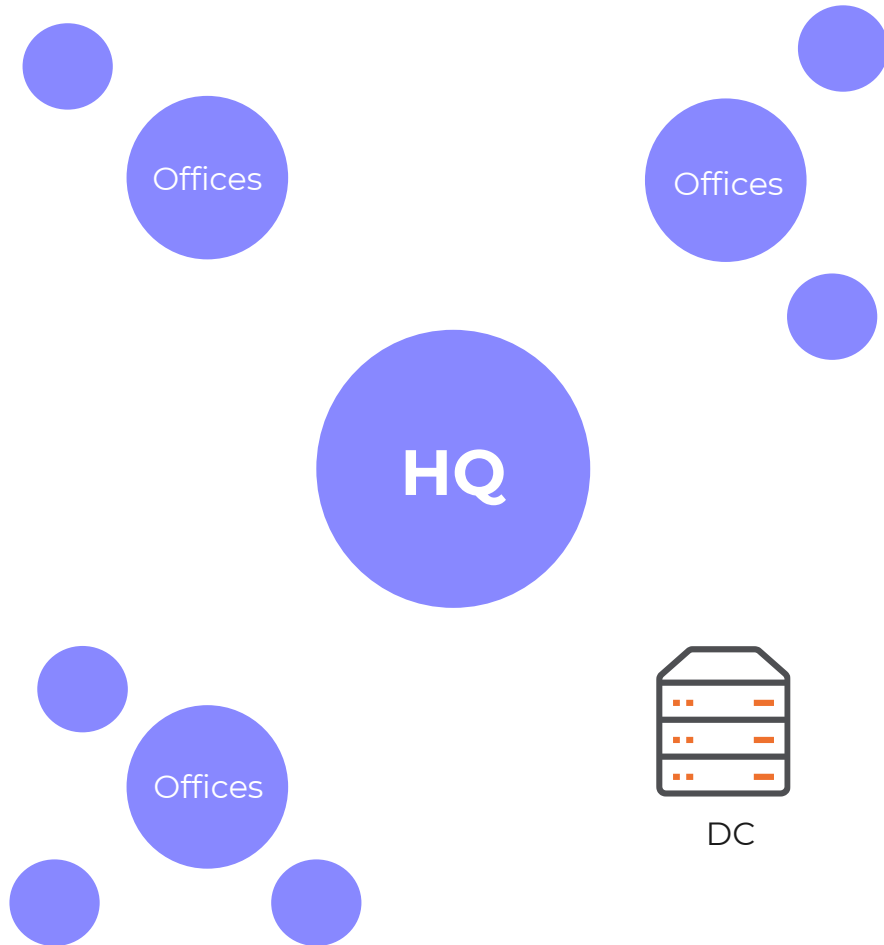
The experience of the
user is paramount



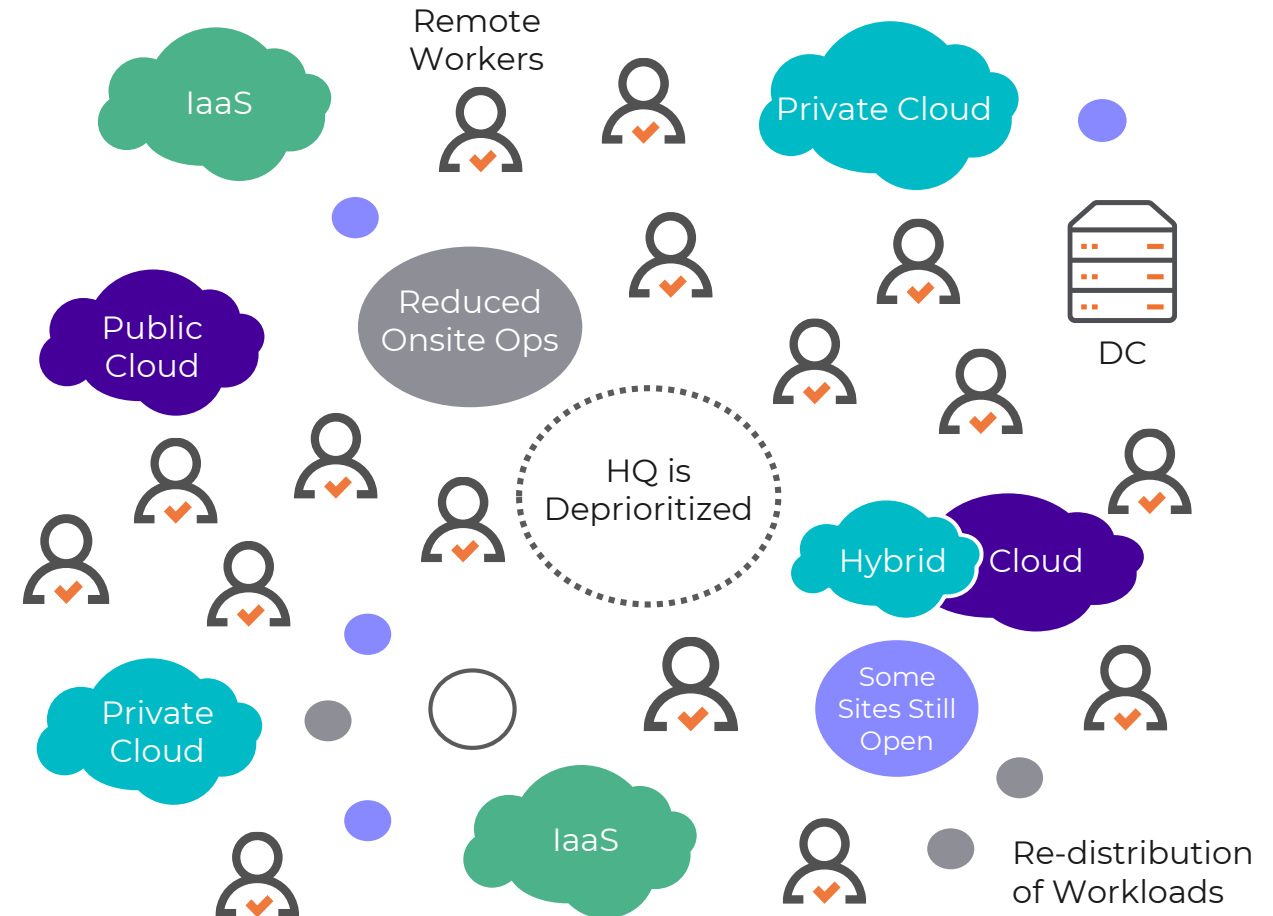
The network is **delivered** to and
follows the user

The organization is on a journey

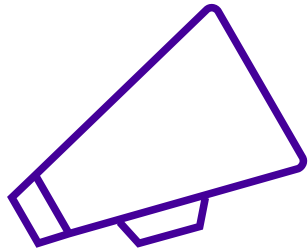
Past: HQ, DC, Sites



Now: The Infinite Edge



Security in the Infinite Enterprise, De-Perimeterization and its impact



... the way security is organized as a series of walls or layers around an organization's private network perimeters and boundaries will need to change radically



Maintaining Information security at the boundaries of an organization have become unworkable

The Need for a Zero Trust Architecture



Zero trust moves defenses
to focus on users, assets, and resources

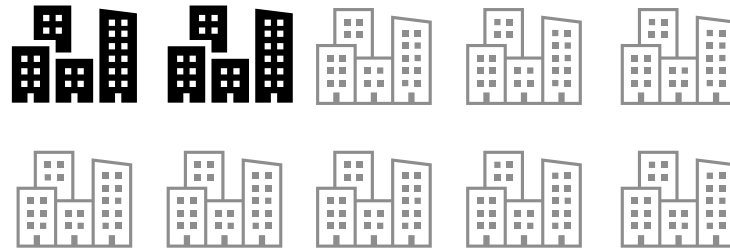
– NIST¹

- Zero trust assumes no implicit trust granted to assets or user accounts
- A Zero Trust access architecture creates context-based access control to applications which can't be discovered by the user unless “published” explicitly to them

¹[SP 800-207 Zero Trust Architecture](#)

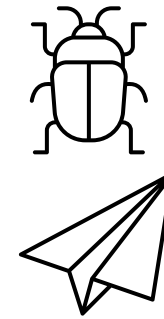
2022

The year supply chain
ransomware attacks
are going to peak
([eSecurity Planet](#))



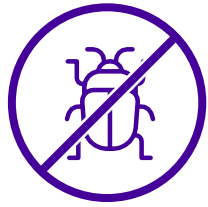
20%

of companies faced a
security breach because
of a remote worker.
([The Malwarebytes](#))



More than
90%
of cyber attacks
begin as spear
phishing emails.
(Trend Micro)

What Zero Trust Can Do



It reduces your attack surface and “blast” radius



Is more effective than traditional VPN technologies

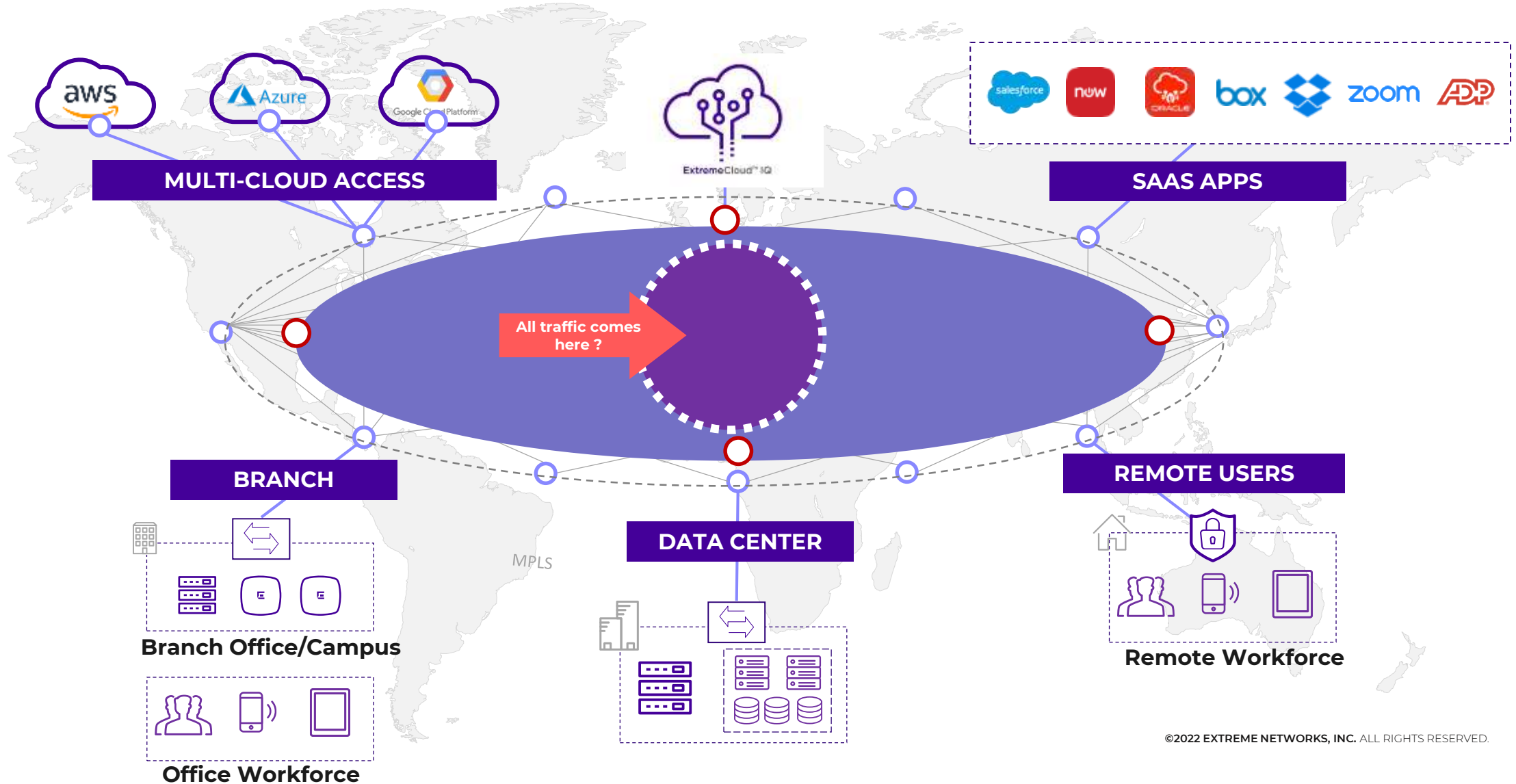


Implements a least privilege approach



Allows you to get insured

Zero Trust Security: From Anywhere to Anywhere



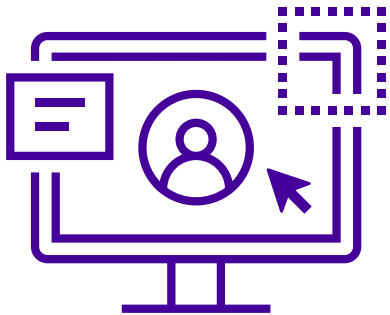
While You Can't Just Buy It – Our view on Zero Trust



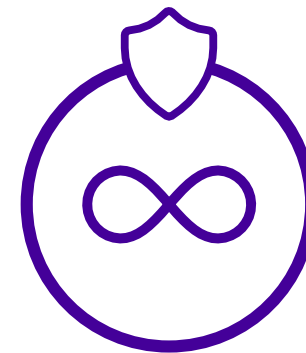
Any Device
Any User
Any Application
Any Location



Zero Trust Security
needs to be built-in,
not bolted on



User experience first
– Adoption increases
security



Zero Trust is a key
cornerstone for the
Infinite Enterprise

