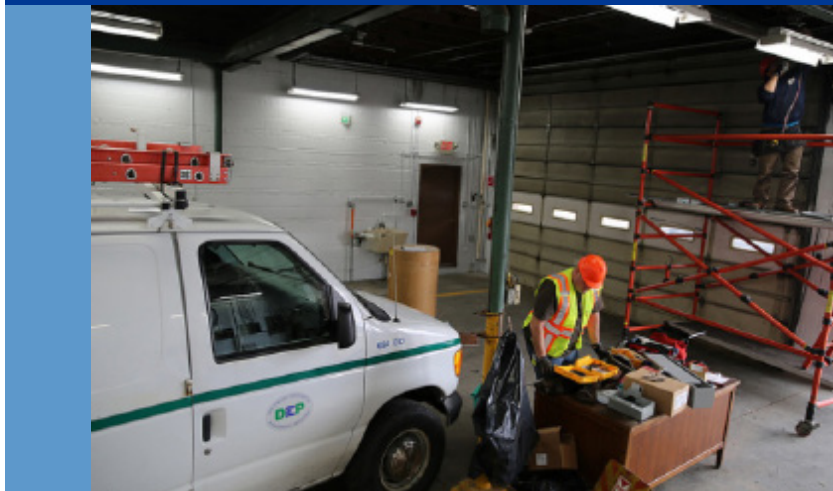


Vehicle/Equipment Operations



Issue Date: August 2018

VEHICLE/EQUIPMENT MAINTENANCE & REPAIR SCM-PP/GH-1



Description

Maintenance and repair operations are required for most municipally-owned vehicles and equipment. These activities have the potential to introduce hydrocarbons, metals and other pollutants into stormwater runoff.

NYC MS4 SPDES Permit Requirement(s)	IV.E. Construction Site Controls IV.G. Pollution Prevention/Good Housekeeping for Municipal Operations and Facilities IV.H. Industrial/Commercial Sources
--	---

KEY SELECTION CRITERIA

Targeted Activities	<ul style="list-style-type: none"> • Engine repair and service • Disposal of fluids and materials • Removal, cleaning, washing & replacement of parts
Performance Goals	<ul style="list-style-type: none"> • Minimize pollutants entering storm sewers and waterways • Implement good housekeeping practices
Most Effective Controls <small>(more detail on page 2)</small>	<ul style="list-style-type: none"> • Perform work indoors or under cover • Capture and properly dispose of wastes • Use dry cleaning methods

RELATED CONTROL MEASURES AND REGULATIONS

Related SCMs	<ul style="list-style-type: none"> • SCM-PP/GH-5 • SCM-PP/GH-19 	<ul style="list-style-type: none"> • SCM-PP/GH-26
Other Regulatory Requirements	<ul style="list-style-type: none"> • 3 RCNY Chapter 22 Section 2211-01 • 15 RCNY Chapter 19 and Chapter 41 • 6 NYCRR Part 613-2.2 	<ul style="list-style-type: none"> • 40 CFR Part 110 & 280 • 40 CFR 355 & 370 • 6 NYCRR Part 374.2 and NYCPC 1003.4.2.2

EFFECTIVENESS FOR TARGETED POLLUTANTS / IMPAIRMENTS

	Floatables
✓	Sediments
	Nitrogen
	Phosphorus
	Pathogens
	Oxygen Demand
✓	PCBs
✓✓	Metals
✓✓	Petroleum Products/PAHs
✓✓ = Good ✓ = Fair = Poor	

CONTROL STRATEGIES

✓	Cover/Contain
✓	Clean Up
✓	Reduce/Minimize
✓	Product Substitutions
✓	Manage Runoff
✓	Capture/Treat/Dispose
✓ = Yes	

*Note: RCNY: Rules of the City of New York; NYCRR: New York Codes, Rules & Regulations; NYCPC: New York City Plumbing Code
CFR: Code of Federal Regulations, EPCRA: Emergency Planning & Community Right-to-Know Act

Listed regulatory requirements are not inclusive of all legal requirements applicable to NYC facilities. Local, state, and/or federal regulations should be consulted to ensure full regulatory compliance.

Control Strategies/Suggested Practices

COVER/CONTAIN

- Use drip pans or containers to collect leaking fluids. Keep separate for ease of disposal.
- Perform work indoors or under cover in a designated area draining to a sanitary sewer.[†]

CLEAN UP

- Maintain a clean work area using dry cleaning methods. Do not hose down work area.
- Promptly clean spills following existing SOPs and protocols.
- Promptly transfer wastes to separate, leak-proof containers and use proper disposal practices.

REDUCE/MINIMIZE

- Perform wet cleaning in one location to keep solvents and residues in one well-maintained area.
- Use dry cleaning methods, such as sanding and sweeping, for parts/surfaces whenever possible.
- Locate drip pans and draining boards to direct solvents into solvent sink or container for reuse.

PRODUCT SUBSTITUTION

- Use non-hazardous chemicals, non-caustic detergents, and non-chlorinated solvents when possible.
- Recycle or reuse materials (e.g., parts, fluids) when possible to reduce the potential for material discharge into waterways.
- Use water-based cleaning products instead of chemical solvents.

MANAGE RUNOFF

- If exposed to stormwater, either use berms or curbs to direct designated area runoff away from storm inlets or temporarily block or seal the storm inlet until designated area runoff is properly disposed.

CAPTURE/TREAT/DISPOSE

- Install pretreatment systems (e.g., vaults, particle separators, oil-water separators) where necessary to capture contaminants (e.g., oil, grit) in accordance with manufacturer's recommendations. These systems should be connected to the sanitary sewer.
- Establish a schedule for regular inspection and maintenance for pretreatment systems in accordance with manufacturer recommendations.
- Install monitoring equipment on pretreatment systems.

[†] Facility needs to ensure that all discharges to the sewer system comply with DEP regulations, as well as applicable DOB regulations.

References

1. NYSDEC SPDES Multi-Sector General Permit for Stormwater Discharges Associated with Industrial Activity, Permit No. GP-0-17-004, March 2018
2. Municipal Pollution Prevention and Good Housekeeping Program Assistance, NYSDEC May 2006
3. Environmental Compliance Guide for Auto Body Shops, NYSDEC December 2009
4. USEPA Potential Pollutants Likely Associated with Specific Municipal Facilities and Activities, November 2011
5. USEPA, Pollution Prevention/Good Housekeeping for Municipal Operations, National Menu of Best Management Practices, 2001
6. Western New York Stormwater Coalition, Erie County Department of Environmental and Planning Division of Environmental Compliance Services, Pollution Prevention/Good Housekeeping for Municipal Operations: A Guidance Document of Best Management Practices and Inspection Checklists, April 2006
7. Erie County/Western New York Stormwater Coalition, Pollution Prevention/Good Housekeeping for Municipal Operations: A Guidance Document of BMPs and Inspection Checklists, April 2006

These control strategies and suggested practices are not all-inclusive and are intended to help identify practices that are efficient, effective and practicable in addressing potential impacts to stormwater.