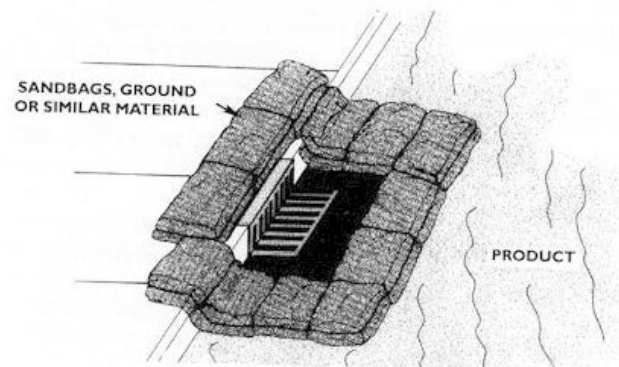


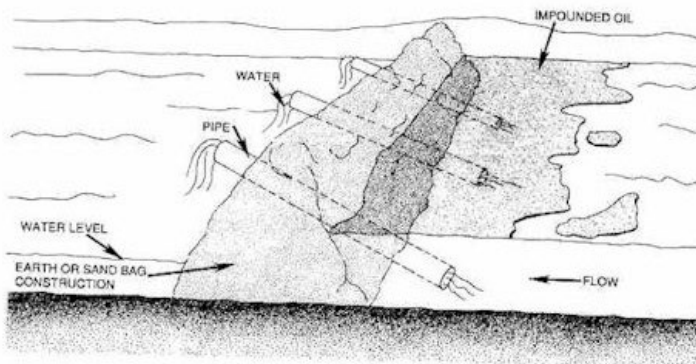
# EMERGENCY RESPONDER INFORMATION

- **Crude oil is flammable and can contain H2S**
- Liquid can follow terrain
- Use air monitoring devices to detect levels and establish zones
- Pipeline can continue to release for hours
- Do not approach or drive through pooled fuels
- Do not extinguish pipeline fire
- Get ahead of flow path and create dams or underflow dams
- Block sewer inlets



# EMERGENCY RESPONDER TACTICS

- Protect the public:
  - Use ERG to help establish minimum zones
  - Evacuate or Shelter in Place
  - Block roads/deny entry
- Determine impacted area
  - Crude oils will flow downhill through ditches, creeks, valleys
  - Crude oils will float on water and can flow under ice
  - Check bridges and waterway access points



Underflow dam