

# Frequently Asked Questions (FAQ) – ONEOK Interstate Interactive Pipeline System Maps (IIPSM)

---

## FAQ Contents

1. Why should I use the Interactive Pipeline System Maps? .....	2
2. How do I access the Interactive Pipeline System Map? .....	2
3. How do I zoom in/out of the Interactive Pipeline System Map? .....	3
4. How can I re-center the Interactive Pipeline System Map? .....	3
5. How can I move the map around? .....	4
6. How can I view data for a particular section of the pipeline? .....	4
7. How can I measure distance from a location to the pipeline? .....	5
8. How can I see point capacities? .....	7
9. How can I see segment capacities? .....	8
10. How can I reset to the default pipeline map view? .....	8
11. How can I resize a view region/panel? .....	8
12. How can I turn on/off the legend? .....	9
13. How can I use the search filters? .....	9
14. How can I reset all search filters? .....	11
15. How can I export a visualization image? .....	12
16. How can I export a table? .....	13
17. How can I sort a table column? .....	14
18. How can I find Point or Segment capacity? .....	14
19. How can I find my contract paths? .....	14
20. Does the interactive pipeline map comply with NAESB/FERC requirements? .....	14
21. Am I getting pipeline data in real time? .....	14

## 1. Why should I use the Interactive Pipeline System Maps?

- Instantly approximate distances from any location to the pipeline.
- Instantly retrieve and visualize various pipeline point and pipeline segment (mainline) capacities such as:
  - Operationally Available Capacity,
  - Operating Capacity,
  - Design Capacity,
  - Contracted Firm Capacity, and
  - Total Scheduled Quantity.
- Easily view and compare all contracts (Firm, IT, and Capacity Release), contract paths, and respective contract terms on any point for a pipe.
- Quickly search and filter any location, contract, shipper, contract terms, nomination cycle, etc.
- Effectively give data a voice to help make fast and intelligent business decisions.
- Potentially optimize scheduling capacities on a pipeline.

## 2. How do I access the Interactive Pipeline System Map?

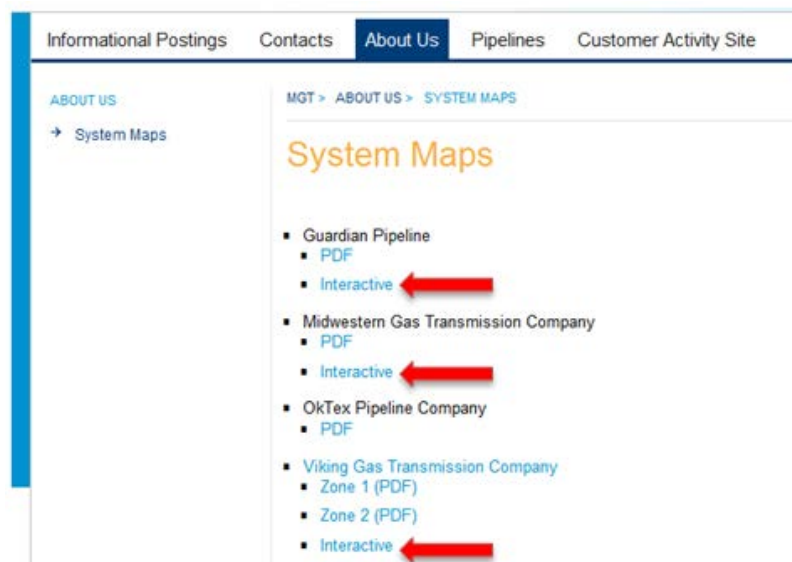
- 1) Open your favorite web browser (e.g., Internet Explorer) and go to any of the following ONEOK interstate pipelines' Informational Postings web sites:

Guardian: <http://gpl.oneokpartners.com/About/Maps>

Midwestern: <http://mgt.oneokpartners.com/About/Maps>

Viking: <http://vgt.oneokpartners.com/About/Maps>

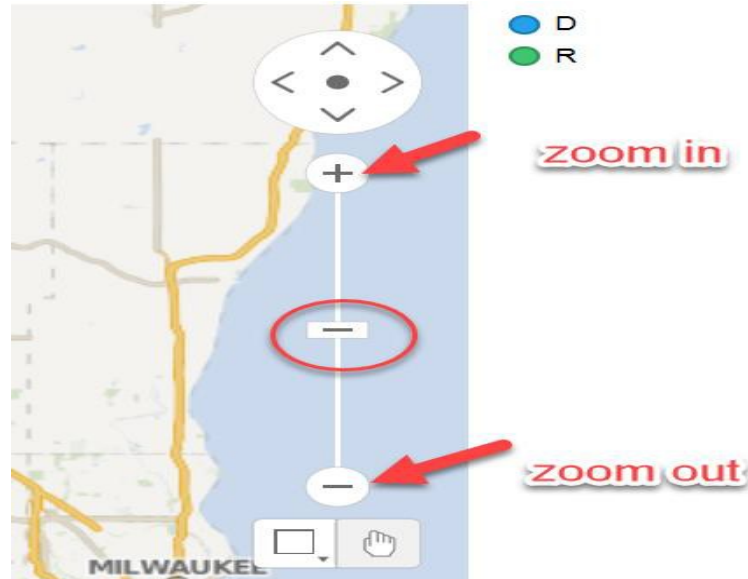
- 2) Navigate to the "System Maps" section under "About Us," then click the "Interactive" link for a pipeline company. See screen shot below.



### 3. How do I zoom in/out of the Interactive Pipeline System Map?

There are three ways to zoom in/out:

- 1) Use your middle mouse button scroll wheel to move up (zoom in) and down (zoom out).
- 2) Click the “+” or “-” button over the map. See screen shot below.



- 3) Left click the slider bar (circled in red above) and hold the button to move it up (zoom in) and down (zoom out).

### 4. How can I re-center the Interactive Pipeline System Map?

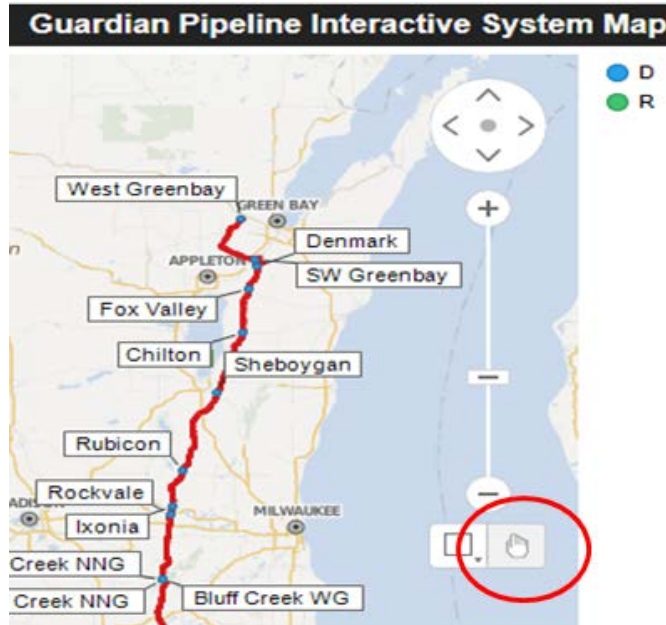
Click the center dot to re-center the pipeline map. See screen shot below.



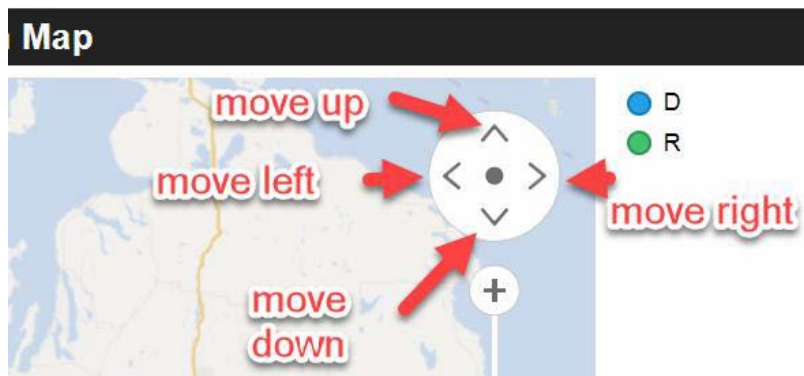
## 5. How can I move the map around?

There are two options to move the map around to get a closer view:

- 1) Click the hand button (circled in red below), then click anywhere over the map and hold your mouse button to move around.



- 2) Click the four arrows on the top right corner over the map. See screen shot below.



## 6. How can I view data for a particular section of the pipeline?

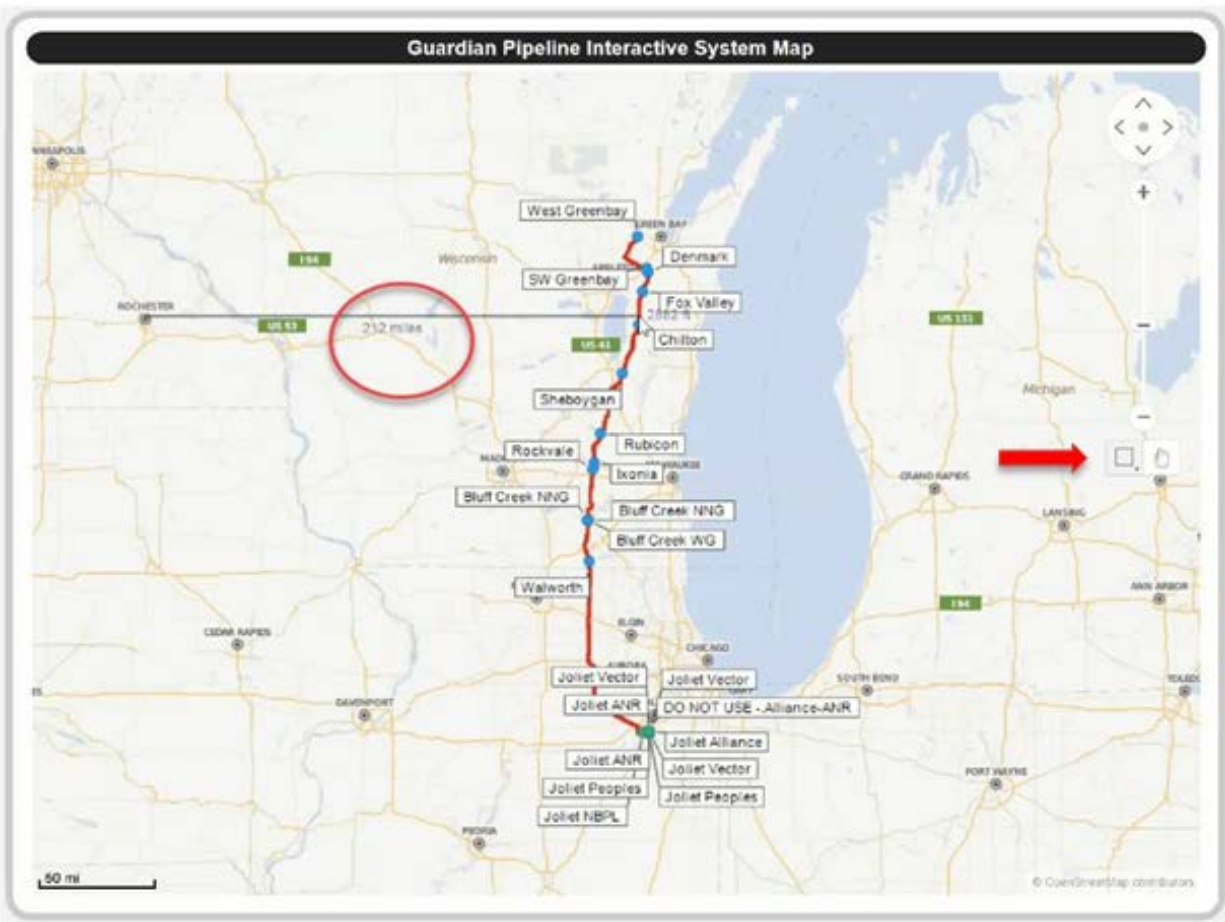
- 1) Select the rectangular button next to the hand symbol button.
- 2) Point your mouse over the location for which you are interested.
- 3) Click your left mouse button and hold it down as you select your region/pipeline section of interest.

Watch this video clip demo ([FAQ-006](#)) for an example.

## 7. How can I measure distance from a location to the pipeline?

There are two ways to measure estimated distance (in miles and/or feet) from a location to the pipeline:

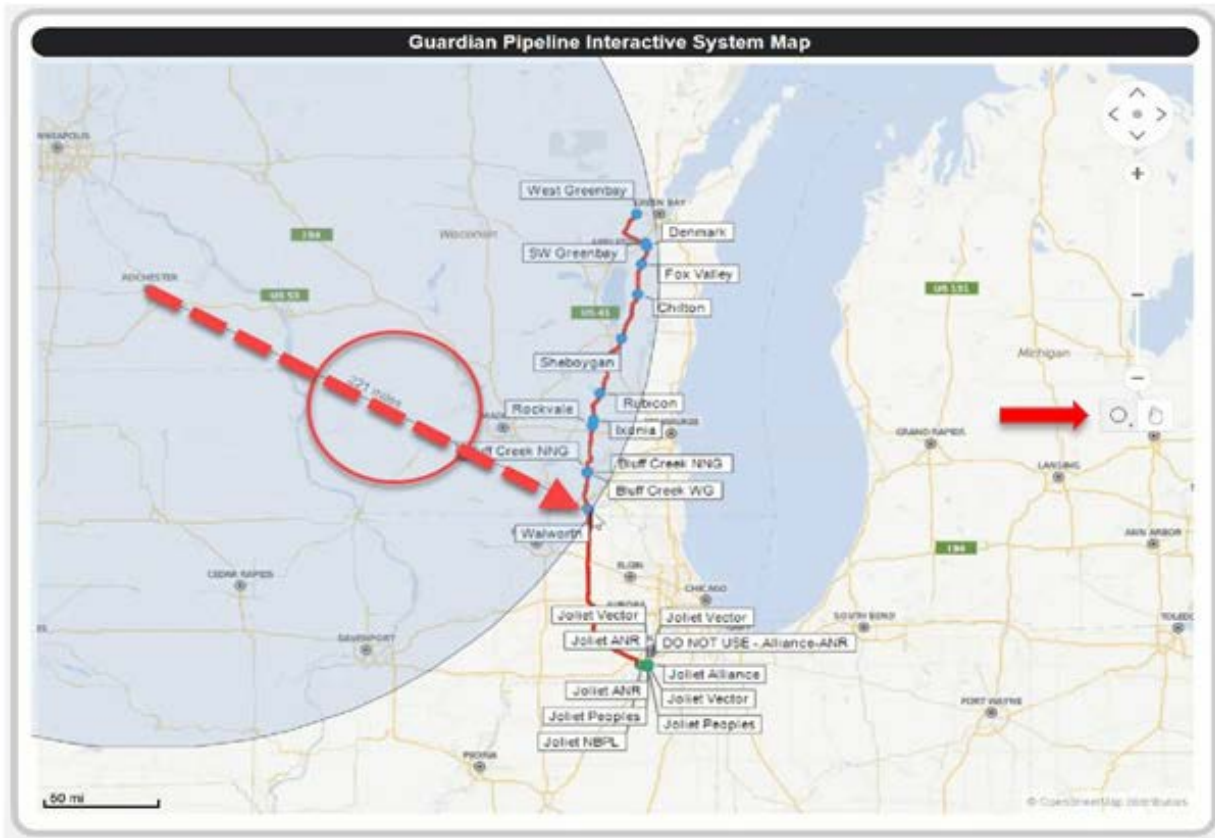
- 1) Rectangle (straight line) method
  - a. Click the “Rectangle” symbol over the map.
  - b. Locate any location on the map (e.g., Rochester, MN – Guardian’s map).
  - c. Click the location and hold your mouse to drag a straight horizontal line to the pipeline to read the distance value (in miles) under the horizontal line.



Watch this video clip demo ([FAQ-007](#)) for an example.

2) Radius (anywhere) method

- a. Click the “Radius” symbol over the map.
- b. Locate any location on the map (e.g., Rochester, MN – Guardian’s map).
- c. Click the location and hold your mouse to drag the radius end arrow point to any position on the pipeline to read the distance value over the radius line (in miles).

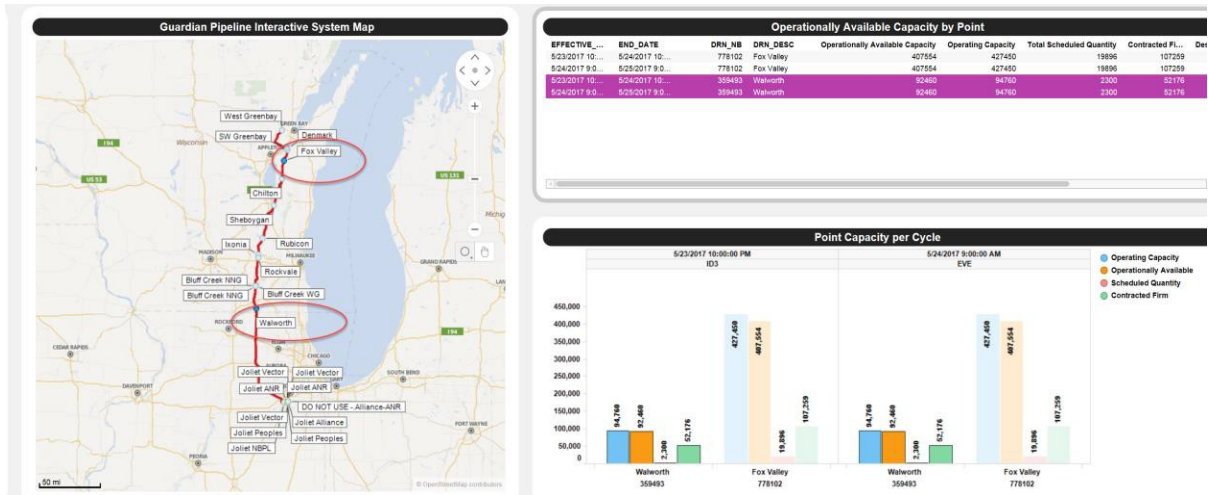


Watch this video clip demo ([FAQ-007](#)) for an example.

## 8. How can I see point capacities?

- 1) Select the “Point Capacity” tab from the top.
- 2) Find your location name and click it.
- 3) Hold “Ctrl” key to select multiple locations.

The screen shot below shows an example of selecting both “Fox Valley” and “Walworth” on the Guardian map.

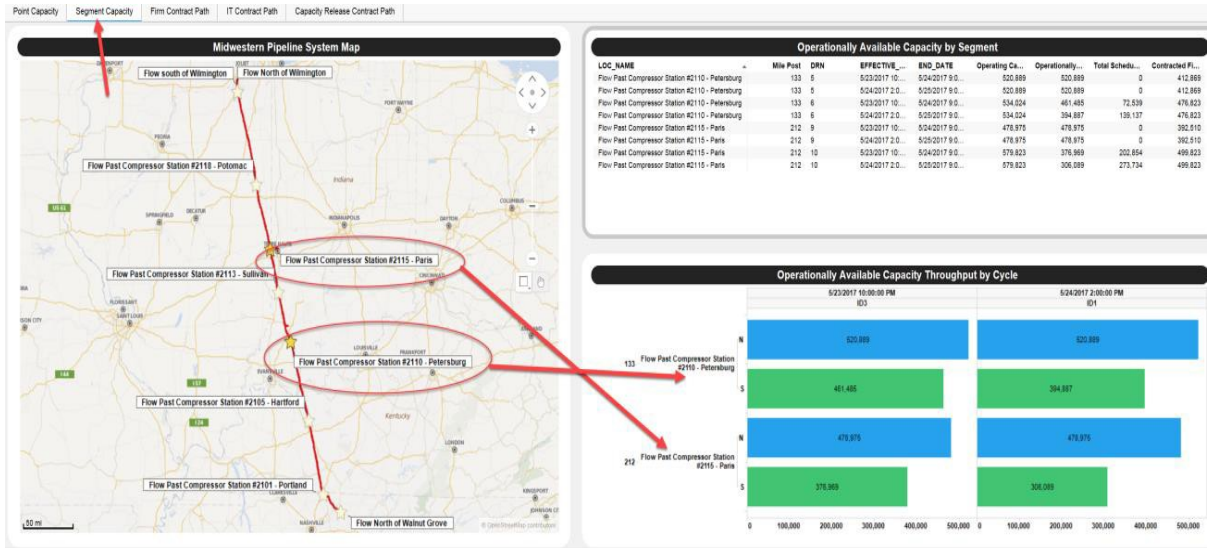


Watch this video clip demo ([FAQ-008](#)) for an example.

## 9. How can I see segment capacities?

- 1) Select the “Segment Capacity” tab from the top.
- 2) Find a segment/compressor station you want to see.
- 3) Click it to view and read the capacity values.
- 4) Hold “Ctrl” key to select multiple compressor stations.

The screen shot below shows an example of selecting both “Flow Past Compressor Station #2115 - Paris” and “Flow Past Compressor Station #2110 - Petersburg” on the Midwestern map.



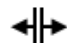

Watch this video clip demo ([FAQ-009](#)) for an example.

## 10. How can I reset to the default pipeline map view?

Click anywhere on the base map layer to reset the pipeline map to its initial or default view state.

Watch this video clip demo ([FAQ-010](#)) for an example.

## 11. How can I resize a view region/panel?

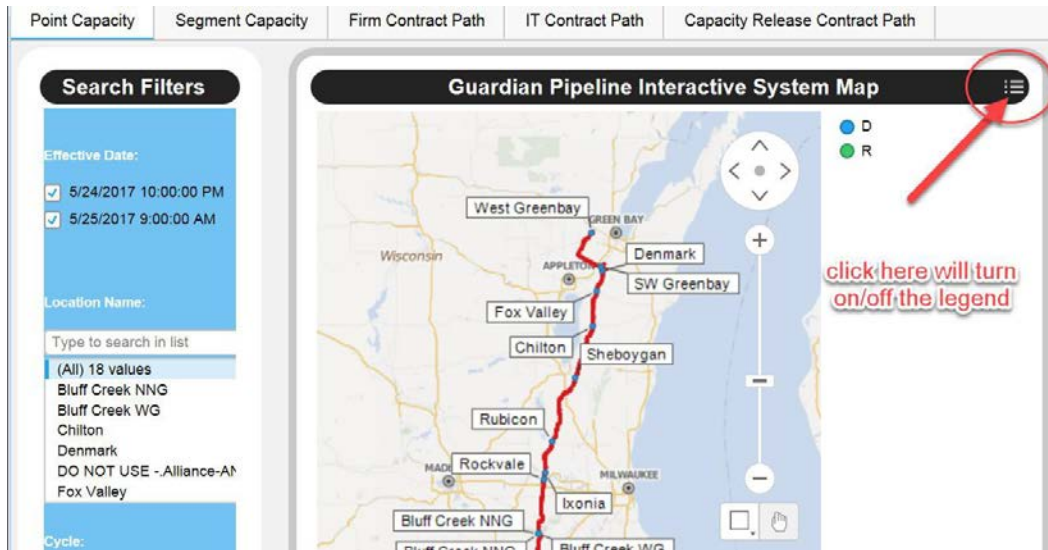
- 1) Hover your mouse over a display area border limit line (light gray).
- 2) Once you see the mouse point changes to a double-headed arrow, press left mouse button and hold to drag the border limit line. To adjust the vertical split, drag the  mouse left or right.  
To adjust the horizontal split, drag the mouse top or  down.

Watch this video clip demo ([FAQ-011](#)) for an example.



## 12. How can I turn on/off the legend?

- 1) Hover your mouse over the top right corner on a display title text area until you can see the legend symbol button become visible.
- 2) Click it to turn the legend displayed on a chart on and off. See screen shot below.



Watch this video clip demo ([FAQ-012](#)) for an example.

## 13. How can I use the search filters?

The “Search Filters” area located left of the pipeline map provides various search abilities to help you quickly and easily find information or data. You can either search by whole criteria value or by partial criteria value. For example, to find the location of “Portland” on the Midwestern map or to look for all Firm Contracts under which they are nominated for the Portland point, you can either:

- 1) Type the whole word “Portland” in the “Point” search text field and then hit the “Enter” key;
- or
- 2) Type the partial word (first few letters) like “Port” in the “Point” search text field and then hit the “Enter” key.

See screen shots below.

Point Capacity Segment Capacity **Firm Contract Path** IT Contract Path Capacity Release Contract Path

### Search Filters

Contract Number:

Type to search in list

(All) 16 values

- FA0016
- FA0342
- FA0846
- FA0875
- FA0877
- FA0941

Shipper Name:

Type to search in list

(All) 12 values

- Ameren Illinois Company d/b/a ...
- City of Portland
- CNE Gas Supply, LLC
- Eco-Energy, LLC
- Exelon Generation Company, L...
- J. Aron & Company

Point:

(All) 21 values

- Portland
- Portland

### Midwestern Pipeline System Map

### Firm Contract Path

CONTRACT	CONTRACT HOLDER	RECEIPT	DELIVERY	QTY	CTRC Begin Date
FB0012	City of Portland	Walnut Grove	Portland	1,500	5/1/2017 12:00:00 AM
FB0012	City of Portland	Walnut Grove	Portland	1,500	5/1/2017 12:00:00 AM
FA0996	Exelon Generation Company, LLC	Scotland REX	Portland	2,382	9/1/2014 12:00:00 AM
FA0996	Exelon Generation Company, LLC	Scotland REX	Portland	2,382	9/1/2014 12:00:00 AM
FA0941	Ameren Illinois Company d/b/a Ameren Illinois	Joliet - ANR	Portland	3,000	4/1/2012 12:00:00 AM
FA0941	Ameren Illinois Company d/b/a Ameren Illinois	Joliet - ANR	Portland	3,000	4/1/2012 12:00:00 AM
FA0016	Roanoke Gas Company	Channahon	Portland	5,293	11/1/1999 12:00:00 AM

### Contract Qty by Shipper

Shipper	Contract	Quantity
Ameren Illinois Comp...	FA0941	3,000
City of Portland	FB0012	1,500
CNE Gas Supply, LLC	FA1003	17,500
Eco-Energy, LLC	FA1003	10,000
Exelon Generation Company, LLC	FA0996	2,382
Exelon Generation Company, LLC	FA0997	12,500
J. Aron & Company	FA0965	60,000
J. Aron & Company	FA0966	60,000
J. Aron & Company	FA0975	7,500
Merrill Lynch Commodities, Inc.	FA0877	50,000
NJR Energy Services...	FA0875	10,000
NJR Energy Services...	FA1002	13,000
Piedmont Natural Gas...	FA0342	120,000
Roanoke Gas Company	FA0016	5,293
Sequent Energy Mana...	FA0954	20,000
Spark Energy Gas, L.L...	FA0846	24,517

Point Capacity Segment Capacity **Firm Contract Path** IT Contract Path Capacity Release Contract Path

### Search Filters

(All) 16 values

- FA0016
- FA0342
- FA0846
- FA0875
- FA0877
- FA0941

Shipper Name:

Type to search in list

(All) 12 values

- Ameren Illinois Company d/b/a ...
- City of Portland
- CNE Gas Supply, LLC
- Eco-Energy, LLC
- Exelon Generation Company, L...
- J. Aron & Company

Point:

Port

(All) 21 values

- Portland

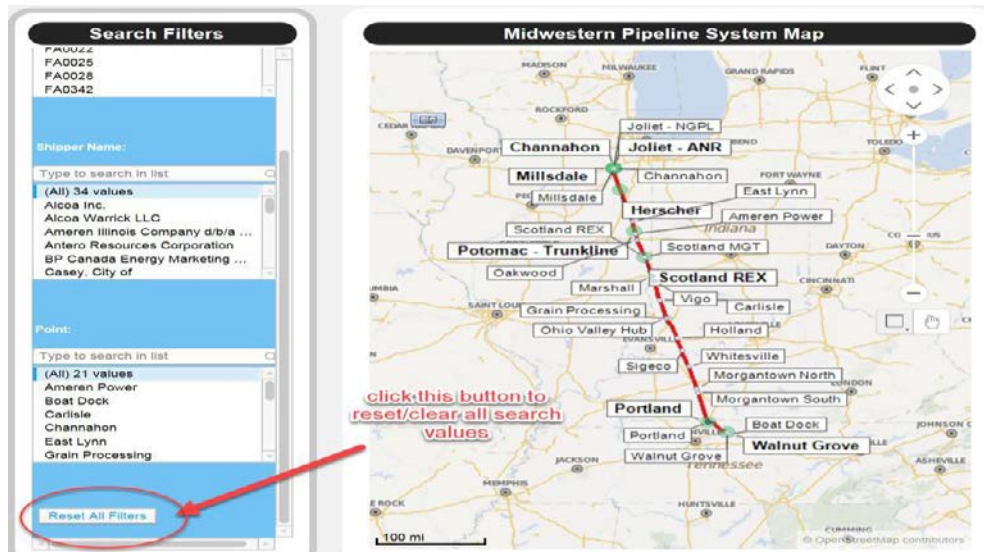
Reset All Filters

### Midwestern Pipeline System Map

Watch this video clip demo ([FAQ-013](#)) for an example.

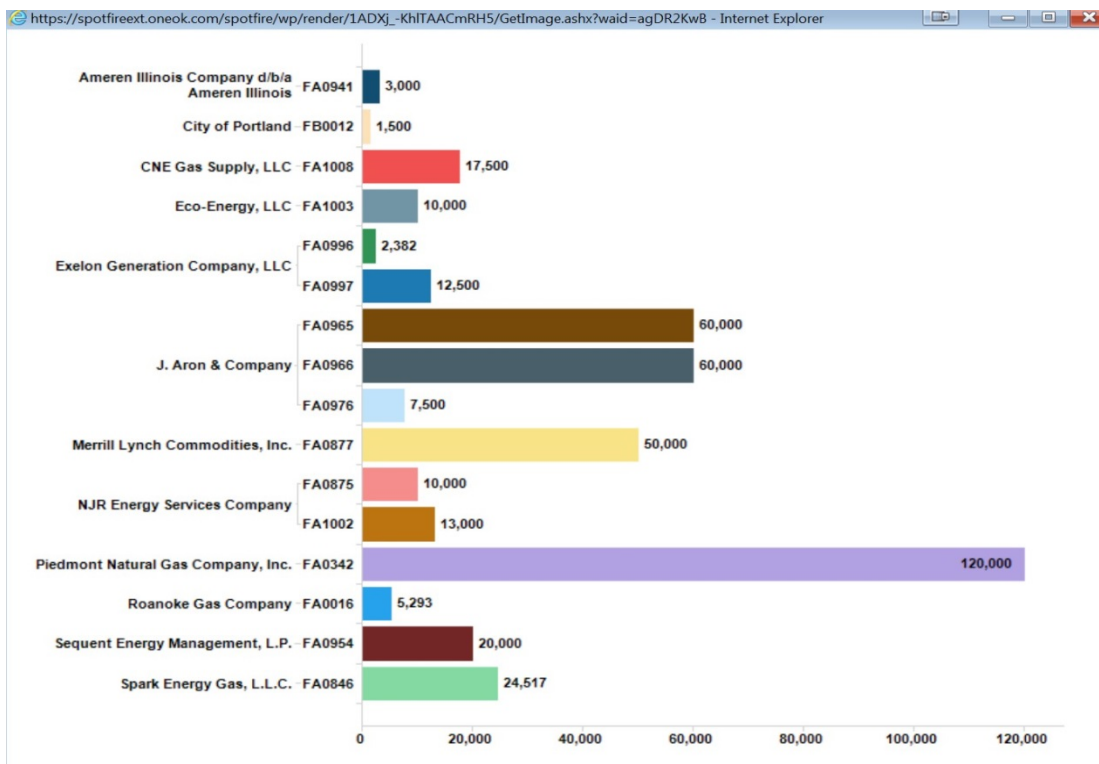
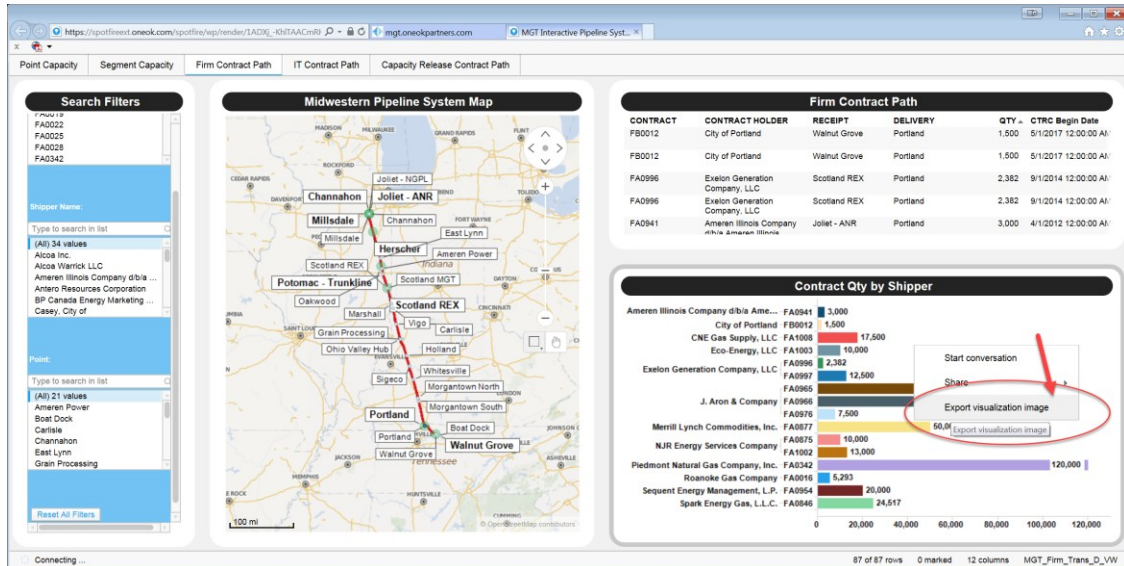
## 14. How can I reset all search filters?

To reset or clear your previously set filter value(s), simply click the “Reset All Filters” button inside the “Search Filters” area. See screen shot below.



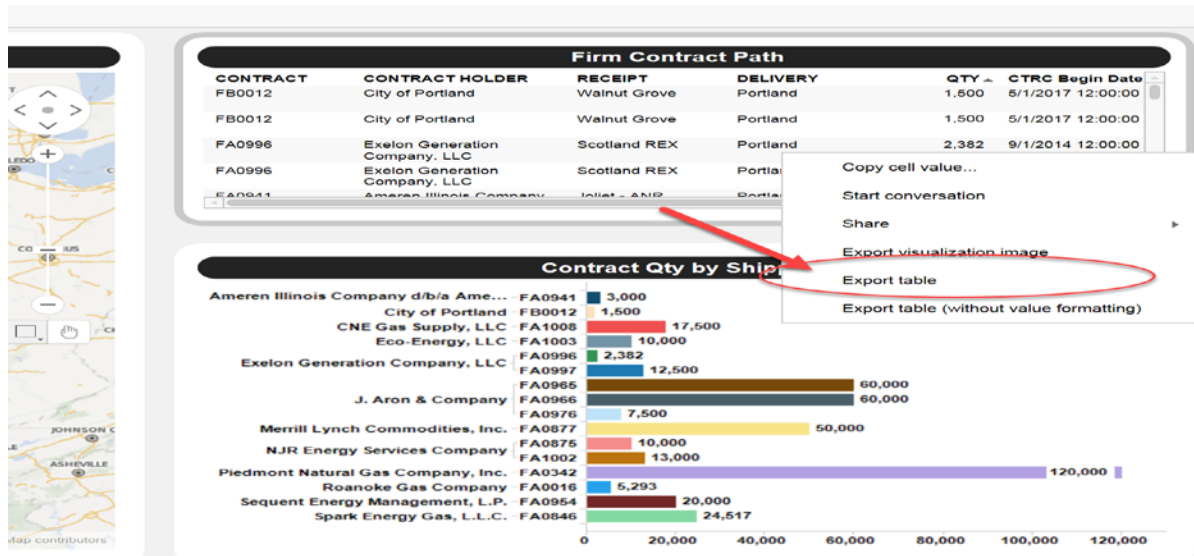
## 15. How can I export a visualization image?

You can export any visualization out of the map systems. To export a visualization chart, right mouse click the target area, then left mouse click the “Export visualization image” menu option from the popup window. The screen shots below illustrate the result of exporting the “Contract Qty by Shipper” chart.



## 16. How can I export a table?

For your own analysis and/or record-keeping purposes, you can easily export any grid view (spreadsheet style) reports out of the interactive map system. To export a table report, right mouse click the target table, then left mouse click the “Export table” menu option from the popup window. The screen shots below illustrate the result of exporting the “Firm Contract Path” report table.



A	B	C	D	E	F	G
CONTRACT	CONTRACT HOLDER	RECEIPT	DELIVERY	QTY	CTCR Begin Date	CTCR End Date
FB0012	City of Portland	Walnut Grove	Portland	1,500	5/1/2017 0:00	4/30/2022 23:59
FB0012	City of Portland	Walnut Grove	Portland	1,500	5/1/2017 0:00	4/30/2022 23:59
FA0996	Exelon Generation Company, LLC	Scotland REX	Portland	2,382	9/1/2014 0:00	3/31/2018 23:59
FA0996	Exelon Generation Company, LLC	Scotland REX	Portland	2,382	9/1/2014 0:00	3/31/2018 23:59
FA0941	Ameren Illinois Company d/b/a Ameren Illinois	Joliet - ANR	Portland	3,000	4/1/2012 0:00	3/31/2019 23:59
FA0941	Ameren Illinois Company d/b/a Ameren Illinois	Joliet - ANR	Portland	3,000	4/1/2012 0:00	3/31/2019 23:59
FA0016	Roanoke Gas Company	Channahon	Portland	5,293	11/1/1999 0:00	10/31/2019 23:59
FA0016	Roanoke Gas Company	Channahon	Portland	5,293	11/1/1999 0:00	10/31/2019 23:59
FA0976	J. Aron & Company	Joliet - ANR	Portland	7,500	11/1/2013 0:00	10/31/2018 23:59
FA0976	J. Aron & Company	Joliet - ANR	Portland	7,500	11/1/2013 0:00	10/31/2018 23:59
FA0875	NJR Energy Services Company	Channahon	Portland	10,000	6/29/2009 0:00	6/28/2018 23:59
FA0875	NJR Energy Services Company	Channahon	Portland	10,000	6/29/2009 0:00	6/28/2018 23:59
FA1003	Eco-Energy, LLC	Millsdale	Portland	10,000	11/1/2015 0:00	10/31/2018 23:59
FA1003	Eco-Energy, LLC	Millsdale	Portland	10,000	11/1/2015 0:00	10/31/2018 23:59
FA0997	Exelon Generation Company, LLC	Scotland REX	Portland	12,500	9/1/2014 0:00	12/28/2019 23:59
FA0997	Exelon Generation Company, LLC	Scotland REX	Portland	12,500	9/1/2014 0:00	12/28/2019 23:59
FA1002	NJR Energy Services Company	Millsdale	Portland	13,000	11/1/2015 0:00	10/31/2020 23:59
FA1002	NJR Energy Services Company	Millsdale	Portland	13,000	11/1/2015 0:00	10/31/2020 23:59
FA1008	CNE Gas Supply, LLC	Scotland REX	Portland	17,500	12/1/2015 0:00	12/28/2019 23:59
FA1008	CNE Gas Supply, LLC	Scotland REX	Portland	17,500	12/1/2015 0:00	12/28/2019 23:59
FA0954	Sequent Energy Management, L.P.	Millsdale	Portland	20,000	10/1/2012 0:00	10/31/2018 23:59
FA0954	Sequent Energy Management, L.P.	Millsdale	Portland	20,000	10/1/2012 0:00	10/31/2018 23:59
FA0846	Spark Energy Gas, L.L.C.	Will County	Portland	24,517	11/1/2006 0:00	4/30/2028 23:59
FA0846	Spark Energy Gas, L.L.C.	Will County	Portland	24,517	11/1/2006 0:00	4/30/2028 23:59
FA0877	Merrill Lynch Commodities, Inc.	Millsdale	Portland	50,000	6/29/2009 0:00	6/28/2019 23:59
FA0877	Merrill Lynch Commodities, Inc.	Millsdale	Portland	50,000	6/29/2009 0:00	6/28/2019 23:59
FA0965	J. Aron & Company	Joliet - ANR	Portland	60,000	10/1/2013 0:00	10/31/2018 23:59
FA0965	J. Aron & Company	Joliet - ANR	Portland	60,000	10/1/2013 0:00	10/31/2018 23:59
FA0966	J. Aron & Company	Joliet - ANR	Portland	60,000	10/1/2013 0:00	10/31/2018 23:59
FA0966	J. Aron & Company	Joliet - ANR	Portland	60,000	10/1/2013 0:00	10/31/2018 23:59
FA0342	Piedmont Natural Gas Company, Inc.	Joliet - ANR	Portland	120,000	1/7/2008 0:00	1/6/2023 23:59
FA0342	Piedmont Natural Gas Company, Inc.	Joliet - ANR	Portland	120,000	1/7/2008 0:00	1/6/2023 23:59

## 17. How can I sort a table column?

To sort your table records, click a table column header to perform either an ascending (up arrow) or a descending (down arrow) sort.

Watch this video clip demo ([FAQ-017](#)) for an example.

## 18. How can I find Point or Segment capacity?

- 1) To find point capacity along a pipeline, first select the “Point Capacity” tab at the top of the pipeline map view; second pick up a location by left mouse clicking on the pipeline; lastly review the various capacity values displayed to the right of the pipeline map. Multiple locations can be selected by holding the “Ctrl” key on your keyboard, and then selecting each individual location.
- 2) To find segment capacity along a pipeline, first select the “Segment Capacity” tab at the top of the pipeline map view; second pick up a compressor station by left mouse clicking on the pipeline; lastly review the various capacity values displayed to the right of the pipeline map. Multiple locations can be selected by holding the “Ctrl” key on your keyboard, and then selecting each individual compressor station.

Watch this video clip demo ([FAQ-018](#)) for an example.

## 19. How can I find my contract paths?

You can easily find your contract paths on the pipeline map, whether it is a firm contract, an IT contract, or a capacity release contract. The different contract types have different corresponding tabs located at the top of the pipeline map view. You can either point to a location directly on the pipeline to view your records to the right of the pipeline map or you can narrow down your criteria by going to the “Search Filters” area to filter out other shippers, points, or contracts.

Watch this video clip demo ([FAQ-019](#)) for an example.

## 20. Does the interactive pipeline map comply with NAESB/FERC requirements?

Yes, all data provided on the pipeline map is fully comply with FERC Order No. 809 and NAESB 3.0.

## 21. Am I getting pipeline data in real time?

Yes, all data you see on the pipeline map is current.