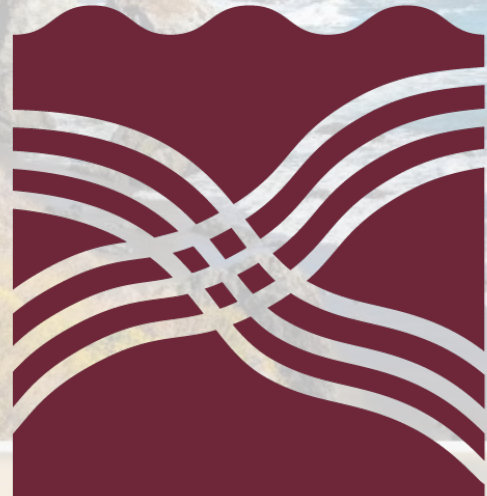


PARTNERSHIP



HEALTHPLAN

of CALIFORNIA

A Public Agency



Developmental Screening in Children

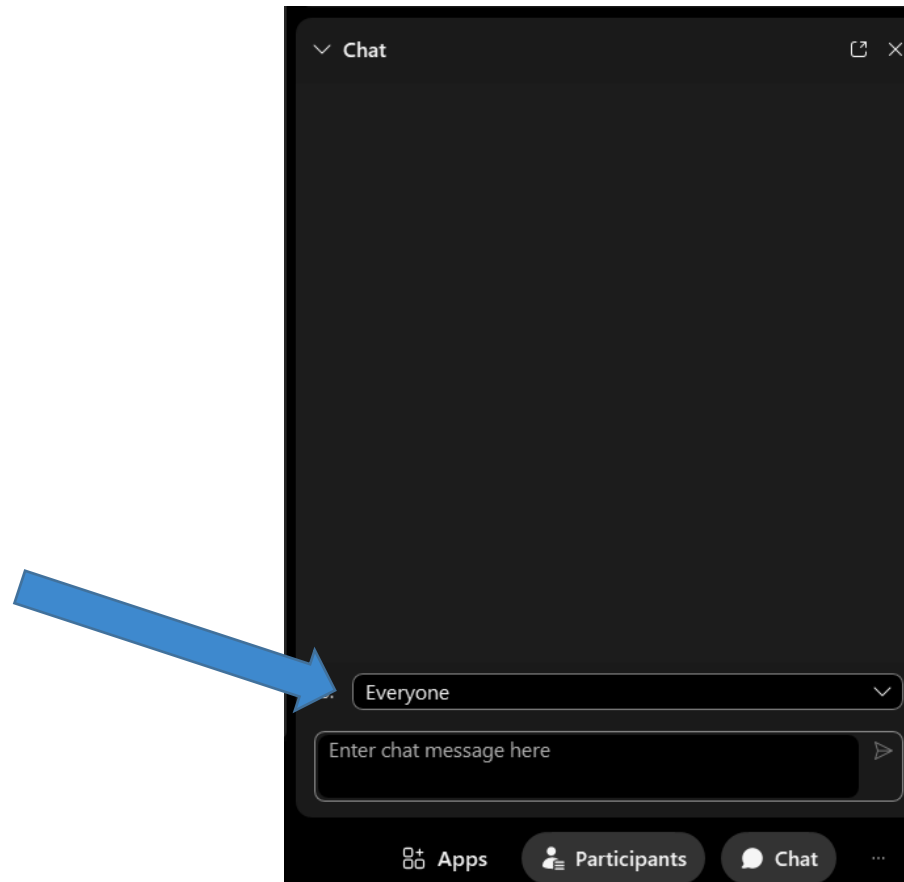
Teresa Frankovich, MD, MPH, FAAP
Kyli Sinner, Sr. Claims Resolution Coordinator

April 3, 2025

Webinar Instructions

- All attendees are muted to reduce background noise and distractions.
- Please take a moment and open your chat box by clicking the chat icon found at the bottom right-hand corner of your screen as shown in **Figure 1**.
- If you have any questions, please type your questions into the chat box, and they will be answered throughout the presentation.
- Select '**Everyone**' when sending a message.

Figure 1





Developmental Screening



Overview

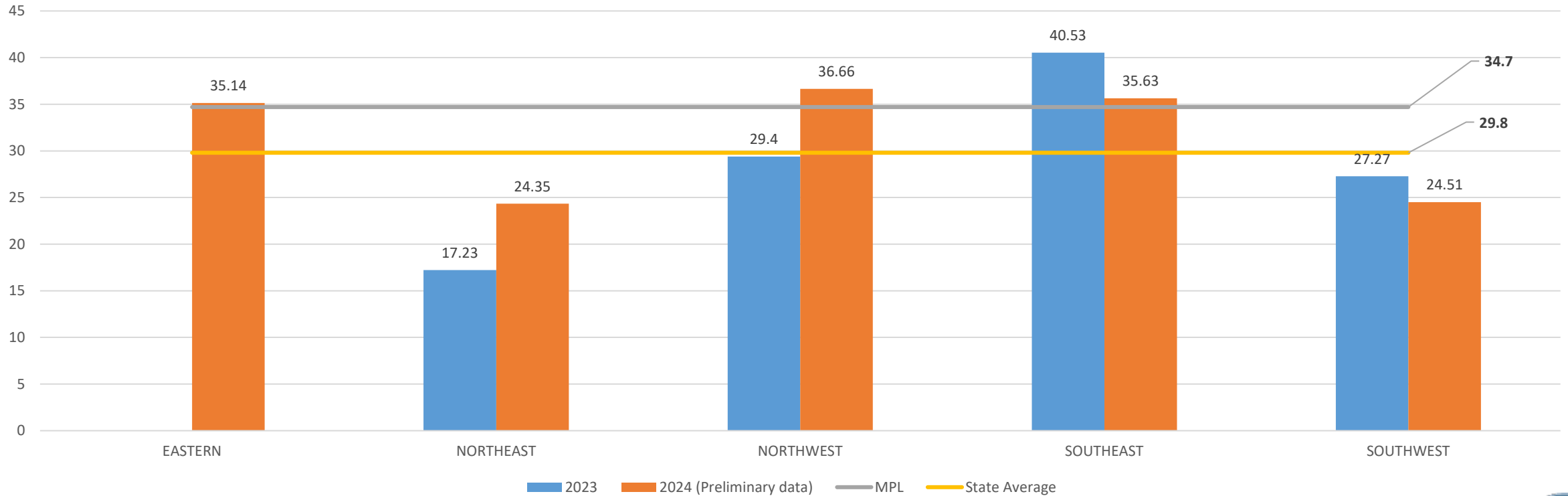
- Developmental screening is **the use of a standardized set of questions** to see if a child's motor, language, cognitive, social, and emotional development are on track for their age.
- National guidelines recommend **developmental screening for all children at 9 months, 18 months, and 30 months** of age and as medically necessary when risk is identified on developmental surveillance (done at every well-child check).
- **All Medi-Cal-enrolled children are entitled to developmental screening** as it is a required service for children under the Medicaid Early and Periodic Screening, Diagnostic, and Treatment (EPSDT) benefit.

Why Do We Screen?

- **1 in 6** children ages 3–17 have developmental disabilities – conditions affect how they play, learn, speak, act, or move.
- Many children with a developmental disability are not identified until after starting school.
- Nationally, only **17%** of children younger than 5 years of age with developmental delays received services for those delays.
- Studies of children who are younger than 3 show that large numbers of presumably eligible children are not enrolled in early intervention. Despite high rates of developmental delays among children who receive Early Head Start, <5% of these children were also enrolled in early intervention.

Developmental Screening Rates by Region

DEV-CH: Developmental Screening in the First Three Years of Life



Autism Screenings

While not part of the incentive program, autism-specific screening should be done at both 18 and 24 months

AAP Screening Tool Grid

Promoting Optimal Development: Identifying Infants and Young Children With Developmental Disorders Through Developmental Surveillance and Screening (FREE)

Link to Article:

<https://publications.aap.org/pediatrics/article/145/1/e20193449/36971/Promoting-Optimal-Development-Identifying-Infants?autologincheck=redirected>

- [Supplemental Table 1](#)

DHCS Screening Tool Requirements

DHCS Proposition 56 Developmental Screenings Policy October 2019

Tools meet the following criteria:

- 1. Developmental domains:** The following domains must be included in the standardized developmental screening tool: motor, language, cognitive, and social-emotional.
- 2. Established Reliability:** Reliability scores of approximately 0.70 or above.
- 3. Established Findings Regarding the Validity:** Validity scores for the tool must be approximately 0.70 or above. Measures of validity must be conducted on a significant number of children and using an appropriate standardized developmental or social-emotional assessment instrument(s).
- 4. Established Sensitivity/Specificity:** Sensitivity and specificity scores of approximately 0.70 or above.

Developmental Screening Tools

A standardized screening tool that meets the criteria set by the American Academy of Pediatrics (AAP) and the Centers for Medicare and Medicaid Services (CMS) will be used. The following tools currently meet these criteria:

- **Ages and Stages Questionnaire – 3rd Edition (ASQ-3) - 1 month to 5.5 years (or ASQ prior version)***
- **Survey of Well-Being of Young Children (SWYC) – 1 month to 65 months ***
- **Parents' Evaluation of Developmental Status (PEDS) – Birth to age 8 ***
- **Parents' Evaluation of Developmental Status – Developmental Milestones (PEDS-DM) ***
- Battelle Developmental Inventory Screening Tool (BDI-ST) – Birth to 95 months
- Bayley Infant Neuro-developmental Screen (BINS) – 3 months to age 2
- Brigance Screens-II – Birth to 90 months
- Child Development Inventory (CDI) – 18 months to age 6
- Infant Development Inventory (IDI) – Birth to 18 months

*** Screening tools currently listed on AAP website**

Ages and Stages Questionnaire (ASQ-3)

- **Ages:** Appropriate for ages 1 month to 5.5 years
- **Time:** Estimates 10-15 minutes for parent to complete and 2-3 minutes for professionals to score
- **Languages:** Available in Arabic, Chinese, English, French, Spanish, and Vietnamese. Additional languages available through other vendors.
- **Where it is done:** Can be completed by parents at home or in waiting room
- **Training:** Training materials available on DVD and on-site training offered. Both are for a fee.
- **Cost:** Fee for testing tools/training (if desired). Starter Kit ~\$325+\$49.95
- **Note:** ASQ:SE-2 is for social-emotional screening only

Survey of Well-Being of Young Children (SWYC)

- Designed to evaluate cognitive, language and motor skills
- **Age:** 1-65 months
- **Time:** About 5 minutes (10 questions)
- **Languages:** Multiple
- **Where:** In office
- **Cost:** Free download at <http://www.theswyc.org/> Available through EPIC, Patient Tools and CHADIS

Note: Autism-specific screening included at appropriate ages

Parents' Evaluation of Developmental Status (PEDS-R)

Designed to screen for developmental and behavioral problems. Previously called "PEDS"

- **Age:** 0-8 years
- **Time:** 2-5 minutes (10 items, Parent interview form)
- **Languages:** Multiple
- **Training:** On-line, on demand training, 1.5 hours, certification (\$125)
- **Cost:** Fee for product materials

Parents' Evaluation of Developmental Status – Developmental Milestones (PEDS-DM)

Screens for developmental and social-emotional problems

- **Age:** 0-8 years
- **Time:** 2-5 minutes (6-8 questions at each age, parent interview form)
- **Languages:** Multiple
- **Training:** On-line, on demand training, 1.5 hours, certification (\$125)
- **Cost:** Fee for product materials (starts at \$279 per AAP)

Battelle Developmental Inventory Screening Tool (BDI-ST)

- **Ages:** 6 months to 8 years old. Is now a component of the newer BDI-3 (third edition) which also assesses things like school readiness
- **Time:** 10-30 minutes. Scoring 15-30 minutes
- **Language:** English, Spanish
- **Where:** Office
- **Training:** Recommend college level training
- **Cost:** Fee for tools and training materials. Complete kit \$1,879 +

Bayley Infant Neuro-Developmental Screen (BINS)

Newest version is Bayley Scales of Infant and Toddler Development which has age range of 16 days to 42 months.

- **Ages:** 3-24 months
- **Time:** 30-70 minutes
- **Training:** Requires training through webinars and workshops. Generally administered by professionals
- **Where:** In office
- **Cost:** Cost for kits and training

Brigance Screens-II – Birth to 90 months

- Newest version is Brigance Screens III which includes birth-11 months, 12-23 months and 24 months in separate components. <https://www.ilgateways.com/docman-docs/faculty-resources/ece-resources/2740-0a-3-early-childhood-screen-0-35-months/file>
- **Time:** 10-15 minutes per component
- **Training:** Must have someone complete a training of trainers (TOT)
- **Where:** In office
- **Cost:** Appears there is an Early Childhood Screen Kit for 0-35 months

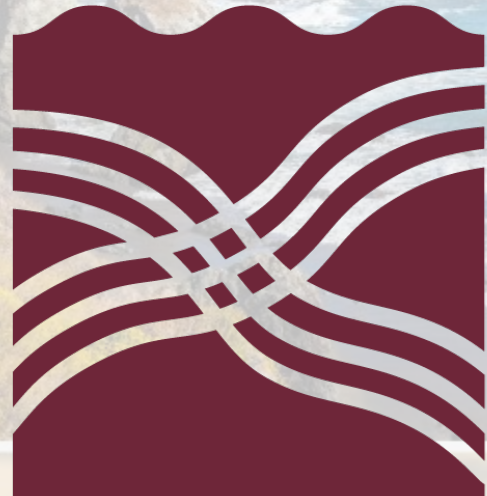
Child Development Inventory (CDI) – 18 months to age 6

- **Age:** 15 months -6 years
- **Time:** Parent can complete. Time required not provided. 30 items
- **Languages:** Not noted
- **Training:** Not noted
- **Cost:** Fees for all items (manuals, materials). Starter kit \$150

Infant Development Inventory – Birth to 18 months

- **Age:** first 18 months
- **Time:** Not noted. Parent questionnaire
- **Languages:** Not noted
- **Training:** Not noted
- **Cost:** Fees for all items (manuals, materials)

PARTNERSHIP



HEALTHPLAN

of CALIFORNIA

A Public Agency



Billing for Developmental Screening

Kyli Sinner, Sr. Claims Resolution Coordinator
April 3, 2025

2024 Statistics

Partnership received 24,280 claims from 01/01/2024 – 12/31/2024 for Developmental Screening totaling \$1,024,439.30 in payment. Out of the claims received 3,519 claims were denied with a total denied allowed amount of \$174,434.82.

Top denials:

Claim Count	Denial Reason	Denied Allowed Amount
1,701	Service limitations have been exceeded	\$100,534.88
385	Unauthorized Service – No RAF on file	\$25,052.68
277	Member was not eligible on date of service	\$14,453.84
173	Invalid modifier for procedure	\$8,827.33
130	Other Insurance – Bill Primary Carrier	\$8,055.50

Note: The majority of the “Invalid modifier for this procedure” denials are for services billed with modifier 59 or 33 in the primary position.

Billing Guidelines

Ages 0 to <20 only

- **CPT Code:** 96110 or 96110 with modifier KX
 - Each payable, per year of age without a Treatment Authorization Request (TAR)
- **Service limitation:** Twice per year.
 - 96110 billed with KX modifier will not count towards the service limitation
- **Modifier KX:** 96110 with a KX modifier may be used for screening that does not include one of the listed nine screening tools.
 - For example, the MCHAT screening for autism.
- **Paid fee for service:** Not part of PCP capitation

Important Note: Effective January 1, 2020

- 96110 may only be used with a validated screening tool that tests for all four developmental domains (motor, language, cognitive and social/emotional) and meets the Centers for Medicare & Medicaid Services (CMS) Child Core Set developmental screening criteria.

Screening Tools

A standardized screening tool that meets the criteria set by the American Academy of Pediatrics (AAP) and the Centers for Medicare and Medicaid Services (CMS) will be used. The following tools currently meet these criteria:

**Before
age 3**

- Ages and Stages Questionnaire - 3rd Edition (ASQ-3)
- Battelle Developmental Inventory Screening Tool (BDI-ST) - Birth to 95 months
- Bayley Infant Neuro-developmental Screen (BINS) - 3 months to age 2
- Brigance Screens-II - Birth to 90 months
- Child Development Inventory (CDI) - 18 months to age 6
- Infant Development Inventory - Birth to 18 months
- Survey of Well-Being of Young Children (SWYC)- 1 month to 65 months
- Parents' Evaluation of Developmental Status (PEDS) - Birth to age 8
- Parent's Evaluation of Developmental Status - Developmental Milestones (PEDS-DM)

**Over
age 3**

- Ages and Stages Questionnaire - 3rd Edition (ASQ-3)
- Battelle Developmental Inventory Screening Tool (BDI-ST) - Birth to 95 months
- Brigance Screens-II - Birth to 90 months
- Child Development Inventory (CDI) - 18 months to age 6
- Survey of Well-Being of Young Children (SWYC)- 1 month to 65 months
- Parents' Evaluation of Developmental Status (PEDS) - Birth to age 8
- Parents' Evaluation of Developmental Status - Developmental Milestones (PEDS-DM)



Contact Us

Business Hours

Monday-Friday
8 a.m. – 5 p.m.

Claims Customer Service

(800) 863-4133
(707) 863-4130

Claims Resolution Coordinators

(855) 798-8761
(530) 999-6868

Partnership Website

PartnershipHP.org



Incentive Payment

- Developmental screenings are recommended at three specific times in early childhood:
 - 9 months, 18 months, 30 months
- Incentive Payments will be given ***in addition*** to the base fee for service payment of 96110:
 - Without a modifier
 - Once per year from age 0 to age 3
 - Once between age 0 to 1
 - Once between age 1 to 2
 - Once between age 2 to 3
- Incentive Payment Rate: \$59.90 per eligible screening

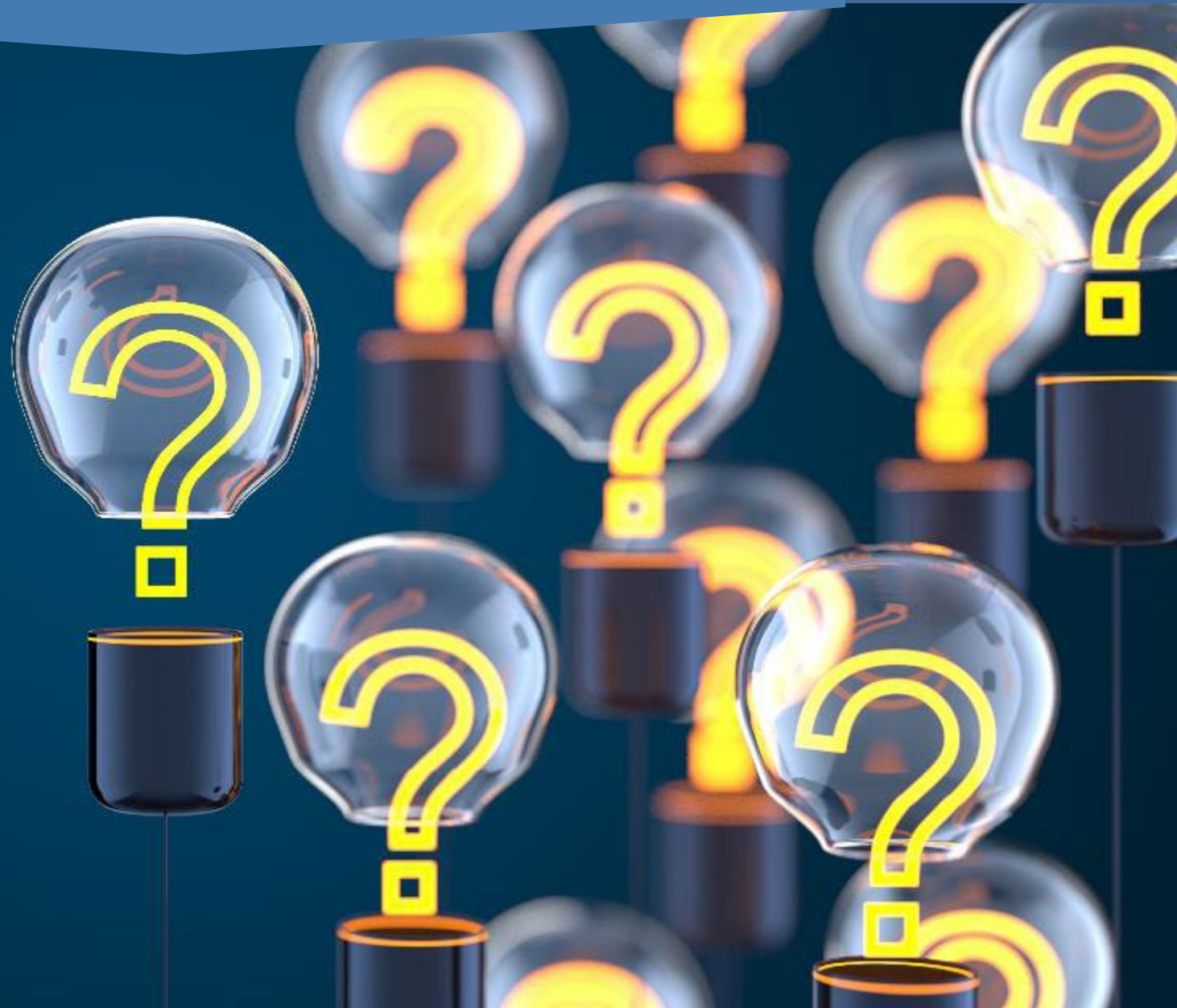
All PCPs, including Federally Qualified Health Centers, Rural Health Clinics, and Indian Health Service MOU clinics, are eligible for this incentive payment.

Monitoring and Oversight

Monitoring and oversight will be conducted by both managed care plans (MCPs) and the Department of Health Care Services (DHCS).

- Partnership will audit the use of acceptable screening tools when billing CPT code 96110. In addition, pediatric chart audits conducted during site reviews, when our nurses go onsite to provider offices and review medical records, will determine if appropriate services such as screenings have occurred.
- DHCS will utilize its Audits & Investigations Division to monitor over-utilization through desk and onsite provider reviews and review of MCP encounter data.

Questions



Partnership HealthPlan of California website:

PartnershipHP.org

Developmental Screening Policy (October 2019):

<https://www.dhcs.ca.gov/provgovpart/Documents/Developmental-Screenings-Policy-10.3.pdf>

Contact Information

Monday - Friday
8 a.m. - 5 p.m.

Claims Questions
(707) 863-4130

Partnership HealthPlan of California
PartnershipHP.org

Clinical Questions
Contact your Regional
Medical Director

Contracting Issues
Contact your local Provider
Relations Representative

Evaluation



<https://www.surveymonkey.com/r/DevSC>