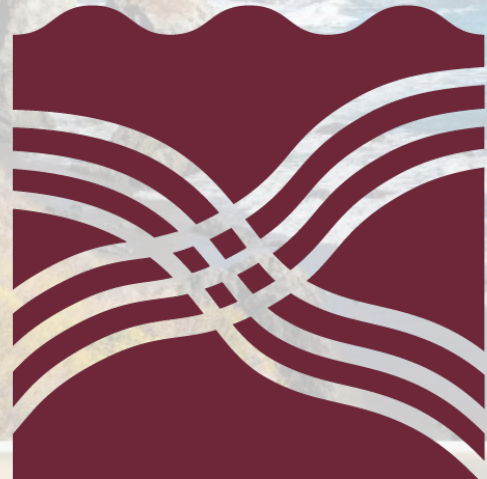


PARTNERSHIP



HEALTHPLAN

of CALIFORNIA

A Public Agency



Partnership County CHA/CHIP Grant Funding Webinar

June 25 and July 9, 2025

Agenda

Welcome and Introduction – In this presentation we will discuss:

- Overview of the CHA/CHIP Program Flyer
- How to Access the Website and Submit Your Application
- Review of Grant Criteria and Eligibility
- Funding Details and Example Uses
- Available Supports and Resources
- Q & A Session

Flyer



CHA/CHIP Development Support Grant Program



Partnership's New Grant Program for Counties Starts July 2025!

This program is designed to provide financial and technical support for the completion of Community Health Assessments (CHA) and Community Health Improvement Plans (CHIP).

Up to **\$100,000 per county** is available for use over a three-year period (July 2025 to June 2028). Applications must include a completed proposal and attestation form.

Disbursement is contingent on the execution or submission of at least 50 percent of all required MOUs between the county and Partnership, as outlined by DHCS.

Webinar Dates

- June 25, 2025, 10 – 11 a.m.
- July 9, 2025, 11 a.m. – noon

Email to Contact

- chachip@partnershiphp.org

More Info

- The 24 counties within the Partnership service area are eligible to apply

Scan either QR code or click the link below.



[Grant Application](#)



[Program Website](#)



Where to Apply



Advanced Search

Enlarge Font Size **A** **A** **A**

HOME

MEMBERS

PROVIDERS

ABOUT US

COMMUNITY

Home | Community | CHA/CHIP Development Support Grant

COMMUNITY RESOURCES

SEXUAL ASSAULT RESOURCES

EMERGENCY RESOURCES

BEHAVIORAL HEALTH INTEGRATION GRANTS

CHA/CHIP DEVELOPMENT SUPPORT GRANT

About

The CHA/CHIP Development Support Grant Program is designed to provide financial and technical support for the completion of Community Health Assessments (CHA) and Community Health Improvement Plans (CHIP).

This program responds to the ongoing need for strengthened local public health infrastructure and planning capacity, especially among counties with limited resources. It also aligns with the California Department of Health Care Services (DHCS) expectations for Medi-Cal managed care plans to engage in meaningful collaboration with Local Health Jurisdictions.

Purpose

The program supports counties in assessing public health needs and developing responsive plans to address them by way of the CHA/CHIP process. This effort encourages joint planning between managed care and public health departments to reduce siloed systems, enhance population health outcomes, and align with the DHCS Quality Strategy and Bold Goals.





CHA/CHIP Development Support Grant Program

CHA/CHIP Development Support Grant Program:

- Provide financial and technical support for the completion of Community Health Assessments (CHA) and Community Health Improvement Plans (CHIP).
- Strengthen local public health infrastructure
- Align managed care and public health collaboration per DHCS expectations

Eligibility:

- All 24 counties within the Partnership service area
- Accreditation status does not affect eligibility



Funding Details

Grant amount: Up to \$100,000 per county

Duration: July 2025 – June 2028 (three years)

Use of funds:

- CHA/CHIP development (e.g., stakeholder engagement, planning, coordination)
- Not eligible for CHIP implementation or unrelated activities
- *\$4,000 meal funding ends June 30. Future meal requests will go through this grant.*
- Disbursement conditions:
 - Completion of proposal
 - Attestation form
 - 50% MOUs fully executed or submitted
 - Good standing

Possible Uses of Grant Funding

- Food or other meeting costs
- Incentives to community members for attendance or surveys
- Hiring:
 - In-house staff (project manager, technical support, etc.)
 - Survey company
 - Consultant
- Tools:
 - Data visualization or maintenance tool(s)
 - Other software



Application Overview

Section 1

Application Information

Please provide your basic contact and organizational details. This information will be used to identify and communicate with the primary applicant throughout the grant review and award process. Make sure all information is accurate and up to date.

Section 2

Grant Qualification Screening

To ensure that your application meets the basic requirements for this grant, please answer the following questions. This section will help us determine if your organization aligns with the funding criteria. All responses should be accurate and reflect your current status.

Section 3

Proposed Project Information

Briefly describe your proposed project, including the goals, specific activities, timeline, and how the requested funding will be used.





Application Process

Application process:

Interested applicants should review the full RFA and submit an application via the CHA/CHIP Development Support Grant Program form.

Upon receipt of initial application, an attestation form will be sent to LHJs and offer an opportunity to submit any supporting documents.

Timeline:

Applications will be reviewed on a rolling basis. The goal is to begin disbursement in Summer 2025 to support early progress on the next CHA/CHIP cycle.

Evaluation criteria:

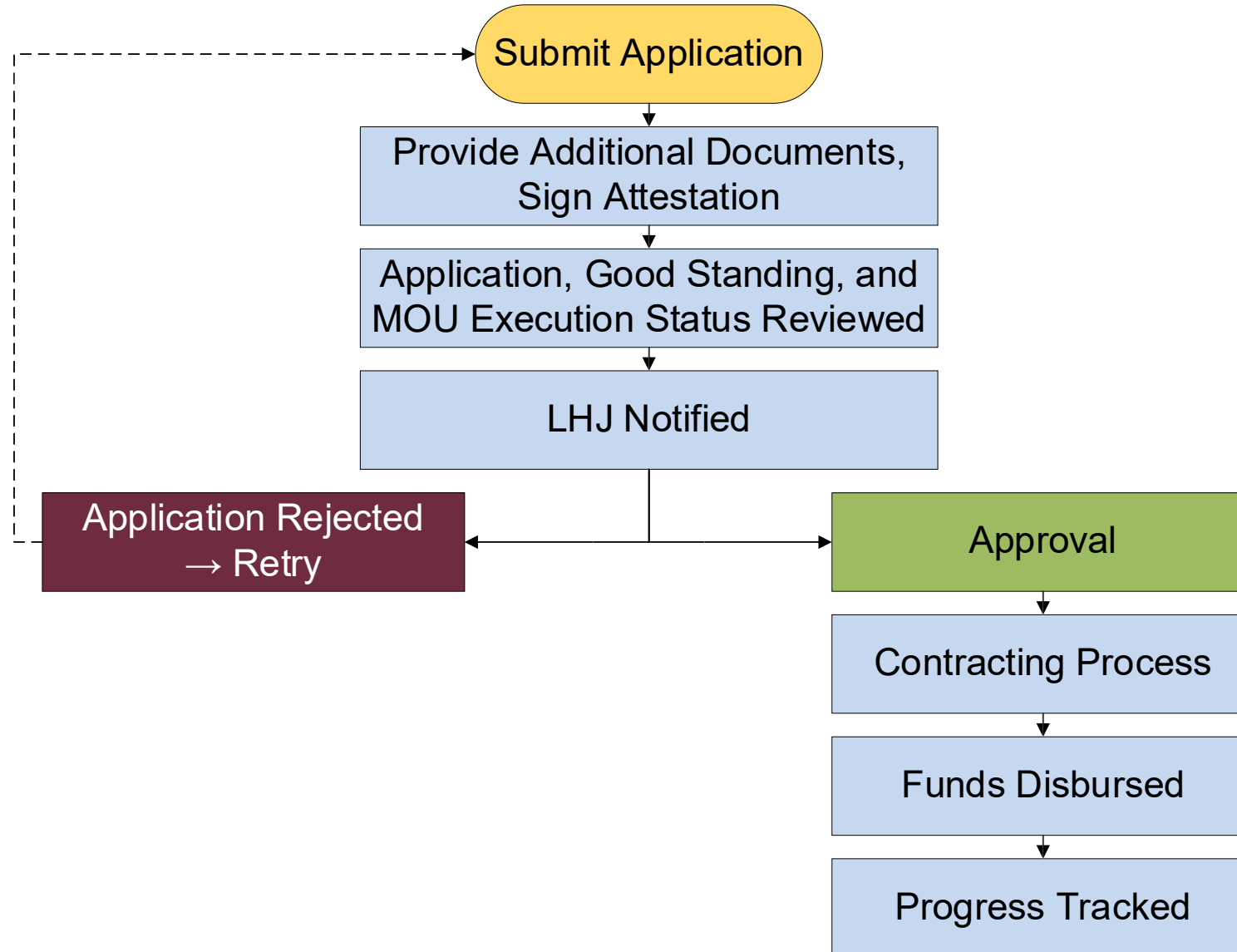
Partnership's internal review committee will evaluate proposals based on the clarity of the work plan, alignment with funding guidelines, execution of MOUs, and county's standing with Partnership.

Questions:

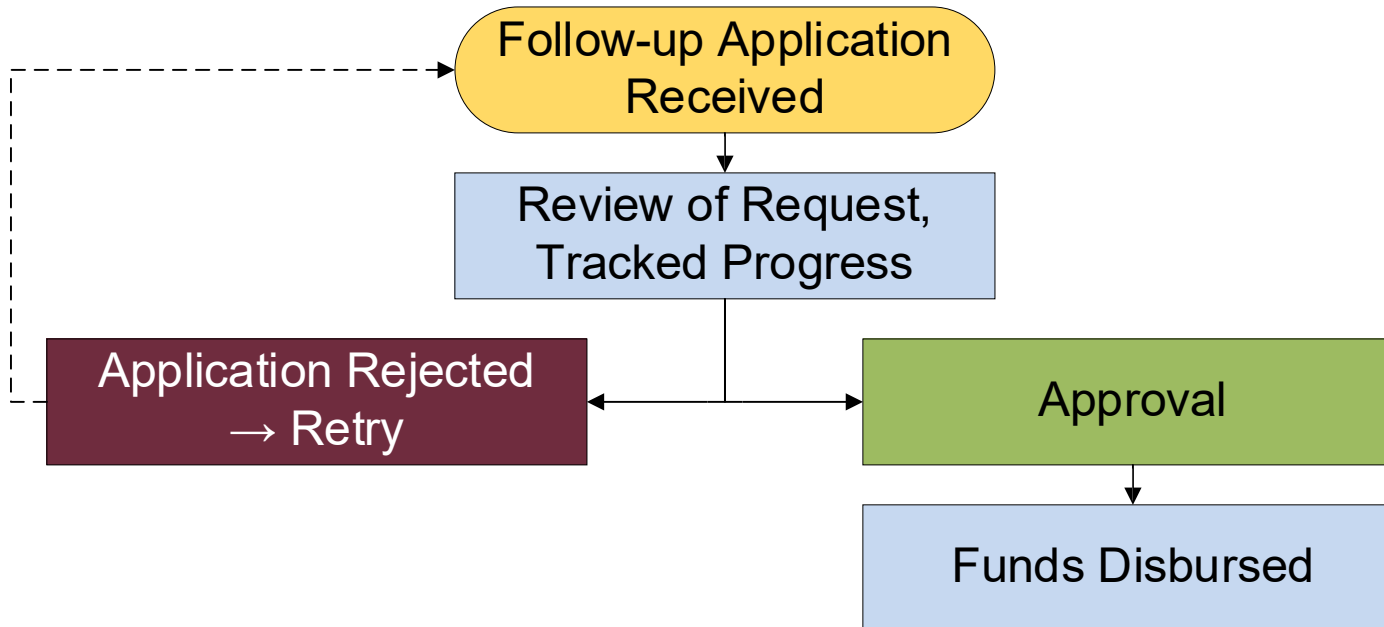
For technical assistance or questions regarding the application process, please contact our team at chachip@partnershiphp.org.



Initial Application Workflow



Follow-Up Applications for Undisbursed Funds



Monitoring & Evaluation

Regular Updates:

- **How:** Grantees will share updates with the Community Health Needs Liaison (CHNL) on a quarterly basis. These updates may include reflections on stakeholder engagement, planning progress, or documentation efforts, in a format that works best for the grantee (e.g., email, short conversation, or summary note).
- **Success Indicator:** Consistent communication and observable progress toward CHA/CHIP development milestones.

Tracking Deliverables & Milestones:

- **How:** Grantees will maintain awareness of key deliverables (e.g., planning documents, engagement efforts) and meet related timelines.
Success Indicator: Completion of key milestones—such as stakeholder engagement or draft planning documents—shared with the CHNL when achieved.

Successful Applications

Application Do's for Success:

Completed Funding Application

Electronic form is fully filled out and submitted. All other forms will be provided in confirmation email.

Signed Attestation Form

Includes necessary signatures confirming intent and compliance and submitted within the allotted business days.

Clear Description of CHA/CHIP Planning Activities

Proposed activities are aligned with CHA/CHIP planning and are clearly articulated.

Budget Aligned with Scope of Work

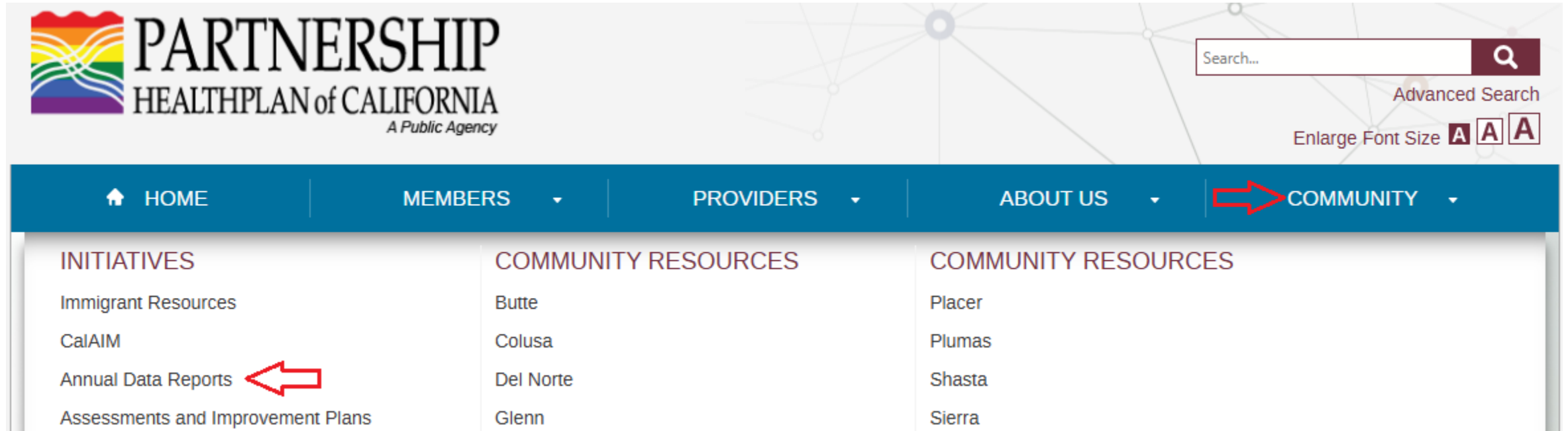
Budget breakdown matches the described activities and makes effective use of funds.

At Least 50% of DHCS MOUs Executed or in Progress

Local Health Jurisdiction (LHJ) MOU must be fully executed.


FYI: County Data Reports Live

- Annual County Data Reports are live on PartnershipHP.org:




The screenshot shows the website header with the logo, a search bar, and navigation links. The 'COMMUNITY' link is highlighted with a red arrow. Below the navigation bar, there are three columns of links. The first column, under 'INITIATIVES', includes 'Annual Data Reports' which is also highlighted with a red arrow. The second column, under 'COMMUNITY RESOURCES', lists counties: Butte, Colusa, Del Norte, and Glenn. The third column, also under 'COMMUNITY RESOURCES', lists counties: Placer, Plumas, Shasta, and Sierra.

PARTNERSHIP
HEALTHPLAN of CALIFORNIA
A Public Agency


Search... 

Advanced Search

Enlarge Font Size 

HOME MEMBERS PROVIDERS ABOUT US **COMMUNITY**

INITIATIVES

- Immigrant Resources
- CalAIM
- Annual Data Reports 
- Assessments and Improvement Plans

COMMUNITY RESOURCES

- Butte
- Colusa
- Del Norte
- Glenn

COMMUNITY RESOURCES

- Placer
- Plumas
- Shasta
- Sierra

Quality Improvement Project Toolkit & Training Program

Equip partners with tools to lead and manage QI projects

Toolkit

- ✓ Ready to use templates
- ✓ Best practices
- ✓ How-to guides
- ✓ Microlearnings
- ✓ **Launch - Summer 2025**

Training Series

- ✓ Live, webinar-based
- ✓ 12-week cohort
- ✓ 6 sessions
- ✓ Project lifecycle
- ✓ **Launch – Q1 2026**

Direct any inquiries to: QI_PMTeam@partnershiphp.org

Frequently Asked Questions

1. Can we apply if we are not pursuing accreditation?

Yes. Accreditation is not required to receive this funding.

2. What if we don't use the funds this year?

Funds may be rolled over for up to three years.

3. Is there a deadline to spend the funds?

While funding can be rolled over, we encourage counties to begin their CHA/CHIP work as early in the CHA/CHIP process as feasible to meet the three-year cycle requirement.

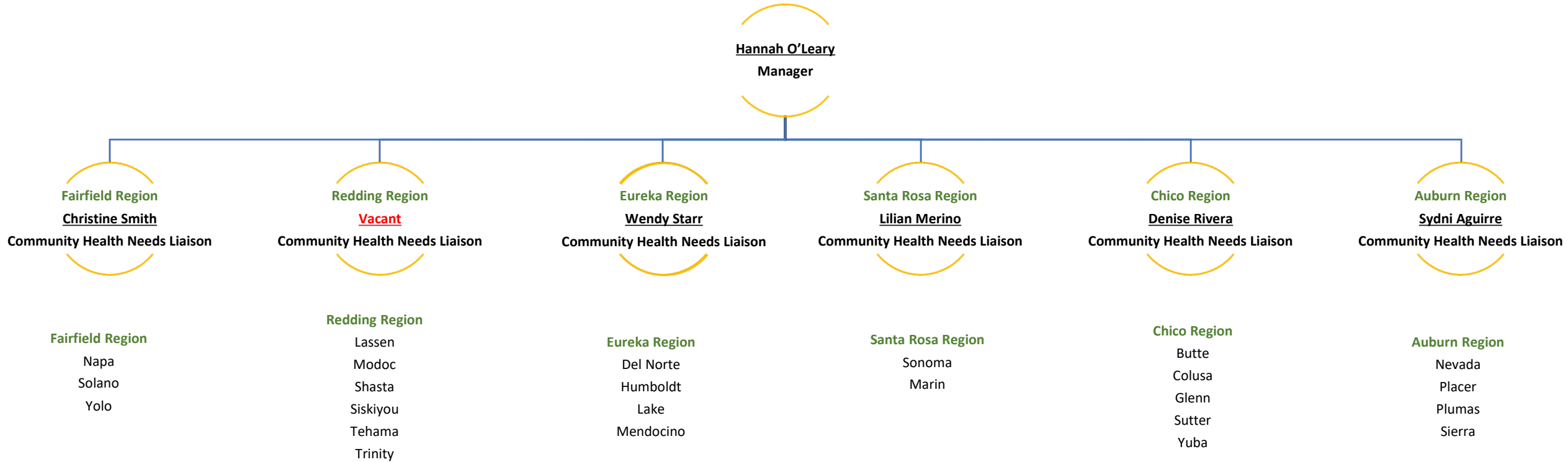
4. Is this funding part of the Community Reinvestment Initiative?

No. This funding is separate and distinct from DHCS' Community Reinvestment Initiative and is specific to CHA/CHIP development.

Questions



Regional CHNL



Contact: chachip@partnershiphp.org