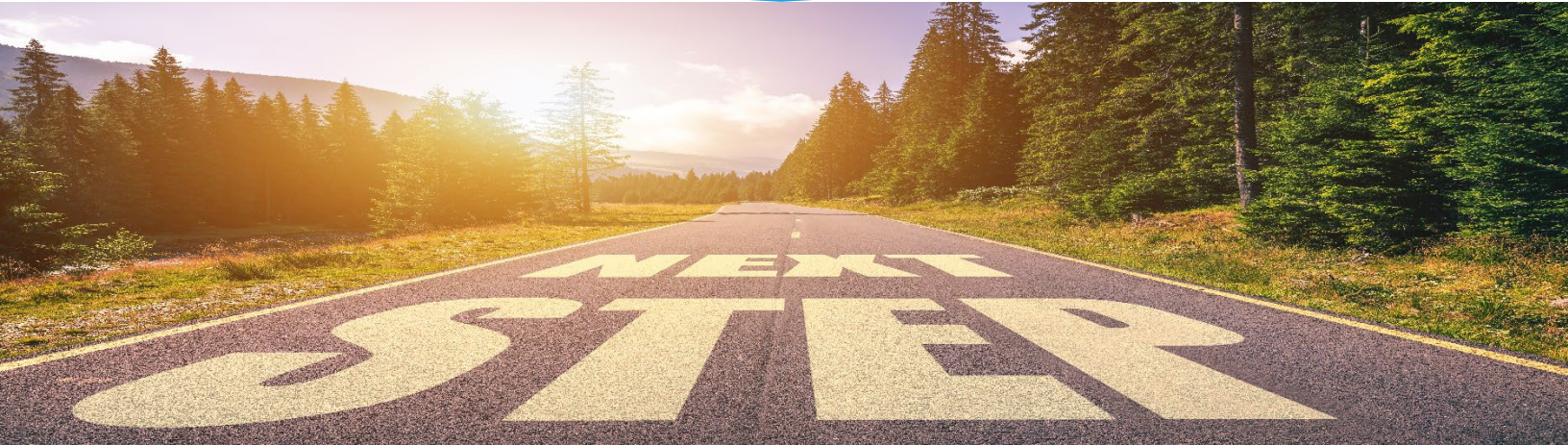




# SONOMA COUNTY REENTRY RESOURCES



## COUNTY RESOURCES

---

### Sonoma County Probation

“Committed to changing lives, reducing crime, and restoring community.”

**Website:**

<https://sonomacounty.ca.gov/Probation/>

Last Verified On: 09/30/2025

## REENTRY SERVICES

---

### 211 Sonoma – Post Incarceration Reentry Resources

“72 Hour Checklist, Tips for Successful Reentry”

**Website:** <https://211sonoma.org/reentry/>

Last Verified On: 09/30/2025

### Re-Entry Program for California Former Offenders

“Ex-offenders face barriers as they try to re-enter society after serving their sentence. Former offenders often find it challenging to find employment or housing with their record...Below is a list of assistance programs, organizations, and other resources that are available to ex-offenders in California to assist with reentering society.”

**Website:**

<https://www.recordgone.com/articles/re-entry-programs-for-california-former-offenders.htm>

Last Verified On: 09/30/2025

### Free Interview Clothes

“Directory of nonprofits across the U.S that are dedicated to giving away professional clothing to those who qualify.”

**Website:** <https://jailstojobs.org/free-interview-clothes/>

Last Verified On: 09/30/2025

### California Re-Entry

“Drop-in Assistance, Long-term Case Management, Special Needs Assistance, Parole Clothing, Post-Release Assistance, Workshops, Training, Cooperation and Expansion”

**Website:**

<https://bonafidelife.org/how-we-help/pre-integration-support/>

Last Verified On: 09/30/2025



# SONOMA COUNTY REENTRY RESOURCES

## REENTRY SERVICES, Continued

---

### Geo Reentry Connect

“Nationwide support services created for you. Find the resources you need – employment, housing, education, family services, treatment, and more.”

**Website:** <https://georeentryconnect.com/about/>

Last Verified On: 09/30/2025

### Roadmap to Reentry – A California Legal Guide

“A resource of legal information that people in California can turn to about issues along the path of reentry.”

**PDF:** <https://www.rootandrebound.org/wp-content/uploads/2020/02/RoadmaptoReentry.pdf>

**Website:**

<https://www.rootandrebound.org/resources/ca-roadmap/>

Last Verified On: 09/30/2025

### Directory of U.S Free or Low-Cost Tattoo Removal Programs

“Removing visible tattoos, especially those that are antisocial or related to gangs, will improve your chances of finding employment, help restore hope and offer healing...For best results, enter your zip code or city to search the surrounding area.”

**Website:** <https://jailstojobs.org/tattoo-removal-programs/>

Last Verified On: 09/30/2025

### Social Security

“Social Security benefits after incarceration- What you need to know: An individual released from incarceration may be eligible for Social Security retirement, survivors, or disability benefit.”

**Contact:** (800) 772-1213

**TTY:** (800) 325-0778

**Website:**

<https://www.ssa.gov/reentry/benefits.htm>

Last Verified On: 09/30/2025

## REPLACING LOST DOCUMENTS

---

### Prisoner Reentry Network’s Guide To: IDENTIFICATION: Birth Certificate, Driver’s License, Social Security, RAP Sheet

“This document will outline the steps required for obtaining legal identification in preparation for release, a process that can begin any time following arrest.”

**Website:** <https://caitlinkellyhenry.com/wp-content/uploads/2014/06/IDENTIFICATION-PRN-4.17.14.pdf>

Last Verified On: 09/30/2025

### Sonoma County Birth Certificates

**Contact:** (707) 565-4407

**Fee:** \$32.00 per copy

**Website:**

<https://sonomacounty.ca.gov/CRA/Clerk-Recorder/Vital-Records/Birth-Certificates/>

Last Verified On: 09/30/2025

### Veterans’ Service Records

**Website:**

<https://www.archives.gov/veterans/military-service-records>

Last Verified On: 09/30/2025

### Replacement Passports

**Contact:** (877) 487-2778

**TTY:** (888) 874-7793

**Website:**

<https://travel.state.gov/content/travel/en/passports/have-passport.html>

Last Verified On: 09/30/2025



# SONOMA COUNTY REENTRY RESOURCES

## REPLACING LOST DOCUMENTS, Continued

---

### California Driver's License

**Contact:** (800) 777-0133

**Website:** <https://www.dmv.ca.gov/portal/driver-licenses-identification-cards/replace-your-driver-license-or-identification-dl-id-card/>

Last Verified On: 09/30/2025

### Replacement Permanent Resident Card

**Website:** <https://www.uscis.gov/i-90>

Last Verified On: 09/30/2025

### Medicare Card

**Contact:** (800) 633-4227

**TTY:** (877) 486-2048

**Website:** <https://faq.ssa.gov/en-us/Topic/article/KA-01735>

Last Verified On: 09/30/2025

### Replacement Social Security Cards

**Contact:** (800) 772-1213

**TTY:** (800) 325-0778

**Website:**

<https://www.ssa.gov/myaccount/replacement-card.html>

Last Verified On: 09/30/2025

### U.S. Tax Returns

**Contact:** (800) 829-1040

**Website:** <https://www.irs.gov/forms-instructions>

Last Verified On: 09/30/2025

## CELL PHONES RESOURCES

---

### California Lifeline Program

“State program that provides discounted home phone and cell phone services to eligible households.”

**Contact:** (866) 272-0349

**Website:** <https://www.californialifeline.com/en>

Last Verified On: 09/30/2025

## CLOTHING RESOURCES

---

### Free Interview Clothes

“Directory of nonprofits across the U.S. that are dedicated to giving away interview and work attire to those in need.”

**Website:** <https://jailstojobs.org/free-interview-clothes/>

Last Verified On: 09/30/2025

# SONOMA COUNTY REENTRY RESOURCES

## CRISIS RESOURCES

---

### Sonoma County Crisis Stabilization Unit

“Provides 24 hour-a-day, 7 days-a-week crisis intervention, assessment, medication, and up to 23 hours of supportive care for individuals in an acute mental health crisis.”

**Location:** 2225 Challenger Way  
Santa Rosa, CA 95407

**Contact:** (707) 565- 4970

**Website:** <https://sonomacounty.ca.gov/health-and-human-services/health-services/divisions/behavioral-health/services/crisis-services/crisis-stabilization-unit>

Last Verified On: 09/30/2025

### North Bay Suicide Prevention - 24 Hour Hotline

“24/7 free and confidential crisis support for callers having thoughts of suicide, as well as friends and family worried about loved ones.”

**Contact:** 9-8-8

**Website:**

<https://buckelew.org/services/suicide-prevention/>

Last Verified On: 09/30/2025

## FOOD RESOURCES

---

### CalFresh

Benefits include: helping people buy healthy food, help families to afford healthy foods, and most stores accept Electronic Benefit Transfer (EBT) cards, issued by CalFresh.

**Petaluma:** 5350 Old Redwood Highway,  
Ste. 100 Petaluma, CA 94954

**Santa Rosa:** 2550 Paulin Drive,  
Santa Rosa, CA 95403

**Contact:** (877) 699-6868

**Website:**

<https://sonomacounty.ca.gov/Human-Services/Economic-Assistance/Food-and-Nutrition/Apply-for-CalFresh/>

Last Verified On: 09/30/2025

### Redwood Empire Food Bank – Food Finder

“Find a distribution site near you”

**Website:** <https://getfood.refb.org/>

Last Verified On: 09/30/2025

### Text FOOD

“Text message based tool that will give you an immediate response, connecting you to information about where to get food near you.”

**English:** Text FOOD to (707) 353-3882

**Spanish:** Text COMIDA to (707) 353-3882

**Website:**

<https://justicewise.org/programs#textfood>

Last Verified On: 09/30/2025

## JOB TRAINING ASSISTANCE

---

### JobLink Sonoma County

“One-stop employment and training services, free for Sonoma County employers and job seekers of all ages.”

**Contact:** (707) 565-5550

**Website:** <https://sonomacounty.gov/health-and-human-services/human-services/jobs-money/job-link-get-connected-with-work-and-employers>

Last Verified On: 09/30/2025

### North Bay TIP (Trades Introduction Program)

“We invest in the development of our workforce by offering training programs, apprenticeships, and educational resources to help individuals advance in their careers..”

**Website:** <http://www.learnaconstructionjob.org/>

Last Verified On: 09/30/2025



# SONOMA COUNTY REENTRY RESOURCES

## LOCAL LIBRARIES

---

### Sonoma County Library

“Library systems serves approximately 495,000 residents in the cities, towns and communities of Cloverdale, Cotati, Guerneville, Healdsburg, Petaluma, Rohnert Park, Santa Rosa, Sebastopol, Sonoma and Windsor.”

**Website:** <https://sonomalibrary.org/locations>

Last Verified On: 09/30/2025

## MENTAL HEALTH RESOURCES

---

### Carelon Behavioral Health

“Behavioral health services company that serves the full spectrum of mental health and wellness needs, from mild-to-moderate anxiety and depression to substance use disorder, suicide prevention, and crisis solutions.”

**Contact:** (855) 765-9703

**Website:** <https://www.carelon.com>

Last Verified On: 09/30/2025

### CalHOPE Warm Line

“Life can be exciting and challenging! For those times when you feel stressed, anxious, depressed, or worried — you’re not alone — CalHOPE is here to help.”

**Contact:** (833) 317-HOPE (4673)

**Website:**

<https://www.calhope.org/Pages/default.aspx>

Last Verified On: 09/30/2025

### Sonoma County Behavioral Health Division

“Our Access Team is the first contact for requesting mental health services. They determine the level of need for mental health services, provide assessment, linkage, and information and referral for mental health services for children, youth, and adults..”

**Contact:** (707) 565-6900

**Website:** <https://sonomacounty.gov/health-and-human-services/health-services/divisions/behavioral-health/services/accessing-mental-health-services>

Last Verified On: 09/30/2025



# SONOMA COUNTY REENTRY RESOURCES

## PARTNERSHIP'S TRANSPORTATION BENEFIT

---

### Partnership Transportation Services – Non-Medical Transportation (NMT)

For PHC members who need assistance getting to medical appointments by car, bus, train, or taxi.

**Contact:** (866) 828-2303

**Website:**

<http://www.partnershiphp.org/Members/Medi-Cal/Pages/Benefits.aspx#phpFaqltem31>

Last Verified On: 09/30/2025

### Partnership Transportation Services – Non-Emergency Medical Transportation (NEMT)

For PHC members who need assistance getting to medical appointments by wheelchair van, gurney, airway management, and/or medical observation during transport.

**Contact:** (866) 828-2303

**Website:**

<http://www.partnershiphp.org/Members/Medi-Cal/Pages/Benefits.aspx#phpFaqltem32>

Last Verified On: 09/30/2025

## TRANSPORTATION

---

### Sonoma County Transit

“Provides local and intercity public transportation services in Sonoma County, California”

**Location:** 355 W. Robles Ave,  
Santa Rosa, CA 95407

**Contact:** (707) 565-7433

**Toll-Free:** (800) 345-7433

**Website:** <https://sctransit.com/>

Last Verified On: 09/30/2025

### Paratransit

“Provide door-to-door paratransit service to people whose disabilities prevent them from using fixed route public transit.”

**Contact:** (707) 573-3377

**Website:** <https://sctransit.com/paratransit/>

Last Verified On: 09/30/2025