



Reid Health



One rural health system's

IMPACT

on the region it serves

2025

I'm reminded every day of the impact an organization like Reid Health has on the communities it serves.

As a rural healthcare provider, that responsibility is an especially heavy one. After all, those we have the privilege to care for often are our friends, family, and neighbors. That's why we're so committed to ensuring the people living in rural East Central Indiana and West Central Ohio continue to have access to quality care.

To fulfill that commitment, it's important that our skilled providers and clinicians have the necessary tools to serve our communities. That's why Reid Health continues to make investments in modern facilities, advanced technology, and state-of-the-art equipment.

We make these investments because we believe our friends, family, and neighbors shouldn't be forced to travel to receive a high level of quality care. That care should be right here in their communities, where they can be treated by the same people they go to church with, who they see at the grocery or at their kid's ballgames. Healthcare means more when it's personal - and it is for us.

In the end, we're friends and neighbors who take care of our friends and neighbors. And that guides us in everything we do.

OUR MISSION:
To lead our communities
to well-being,
one person at a time

Ben Wells,
President/CEO,
Reid Health



Reid Health Governing Board

Mark Harrington, Chair
Rohit Bawa, MD
Annuradha Bhandari, MD
Brad Collins
Brett Guiley

John Henderson
Robin Henry
Tom Hilkert
Morgan Howard

Sam Iden, MD
Dave Jones
Garry Kleer
Paul Lingle

John McGinty, MD
Jordan Raynor, MD
Denise Retz
Aleasia Stewart

Jim Tanner
Bonita Washington-Lacey
Ben Wells
Heather Wierzbinski-Cross

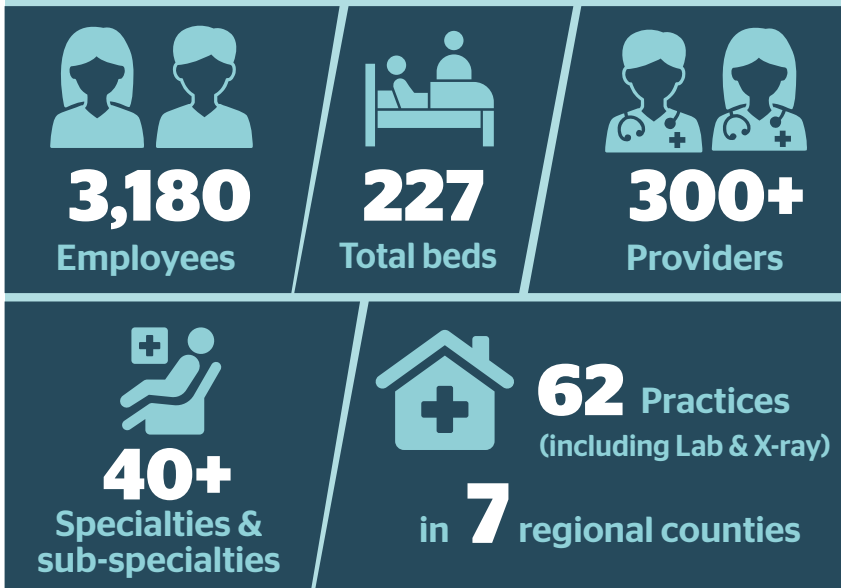
ON THE COVER

(Top L to R): Community Health's Ashley Shepard administering blood pressure test at a community event, Taylor Rogers receiving chemotherapy treatment from Infusion Therapist, Kady Hughes

Bottom: Ben Wells, President/CEO, greeting guests at the new Reid Health Connersville campus open house event

Regional safety-net health system

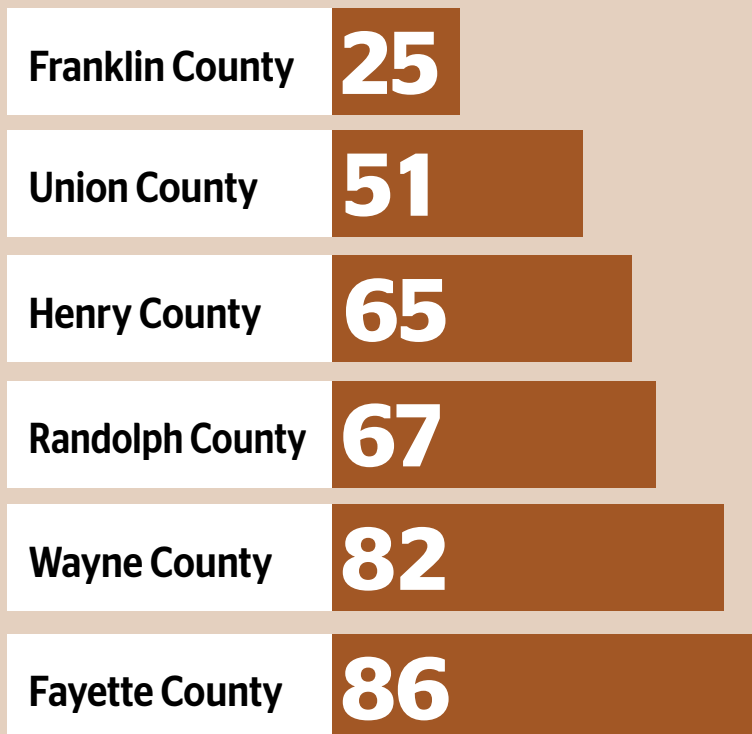
Without Reid Health, many would be forced to travel significant distances to receive the care they need.



2025 Community Health Index

is a measure of socioeconomic need that is correlated with poor health outcomes.

Scale: 0 (no need) to 100 (greatest need)



Data Source

The Community Health Index is calculated by Conduent Healthy Communities Institute using data from Claritas Pop-Facts®, 2025 and Claritas Consumer Profiles, 2024.

Table of Contents

- Reid's Direct Economic Impact..... 2
- Reid Health Access to Care Secured..... 3
- What is Community Benefit?..... 4
- Community Benefit Success Stories 5
- What is 340B?..... 6
- Community Ambulance Services & EMS Training Institute..... 7
- Education is Economic Development 8-9

Nationally recognized
three years in a row



State awards



Excellence in care



5-Star Programs



Reid's Direct Economic Impact

3,180 Total employees	3,550 Additional jobs created	6,730 Total employees & jobs
---------------------------------	---	--

Reid's Direct Impact

\$377,600,000
Annual payroll

\$330,700,000
Non-salary

\$12,300,000
Capital

Reid's Indirect Impact

\$406,300,000
Additional payroll expenditures created

\$355,800,000
Additional supplies/ non-salary expenditures created

\$13,200,000
Additional capital spend created

Reid's Total Impact (direct+indirect)

\$783,900,000
Total payroll expenditures

\$686,500,000
Total supplies/ non-salary expenditures

\$25,500,000
Total capital expenditures

\$720,600,000 + **\$775,300,000** = **\$1,495,900,000**

Total Direct Economic Impact + Total Additional Benefit (indirect) Created = Total Economic Benefit (direct+indirect)

Indiana Hospital Association Economic Impact Calculator; modifiers provided by BEA RIMSII

Reid paid \$663,279 in property taxes in 2025.

Source: Indiana Hospital Association Economic Impact Calculator and Reid Financials.

Preserving Access to Rural Healthcare



In 2019, the City of Connersville and Fayette County were faced with the very real possibility of becoming a healthcare desert for the first time in a century.

Financial difficulties had forced Fayette Regional Health System into bankruptcy and its closure was imminent.

The Reid Health Governing Board decided it couldn't let the community go without critical services, and so Reid Health acquired many of Fayette Regional's assets and made a promise to the community to continue providing high-quality, sustainable services for many years to come.

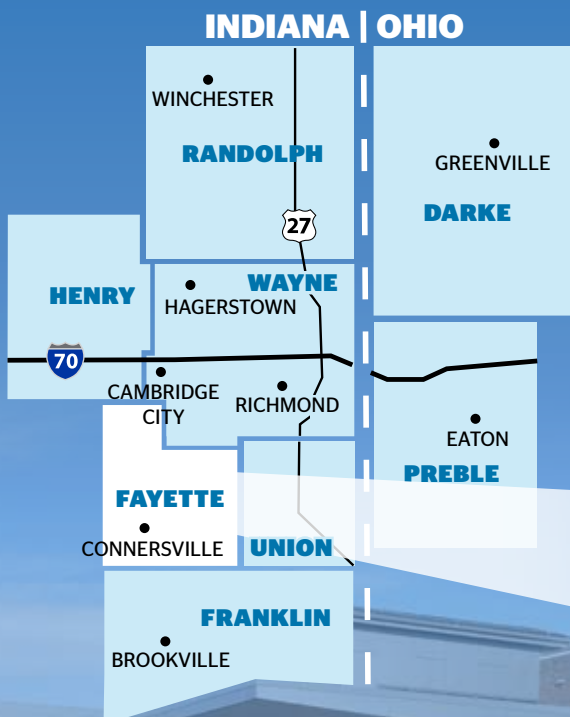


That commitment was made concrete with the recent opening of the new **Reid Health Connersville** campus, a **\$100 million** investment in rural healthcare.



This facility replaces the community's former hospital building, which could no longer meet the community's healthcare needs.

Several services now call the new building home, including emergency care, outpatient lab and radiology, primary care, and several specialty care services, including some that were previously unavailable in Connersville.



SPOTLIGHT *on Fayette County*



What is Community Benefit?

Community Benefit is the basis for the tax-exempt status of not-for-profit hospitals. It's defined as programs or activities that improve access to health services, enhance public health, advance health knowledge through research and education, and/or relieve the burden of government to improve health.

\$60.8 million
Community Benefit in 2025

62K+
Benefiting participants

\$1.5 million+ Financial and in-kind gifts to support community programs

In 2025, the Reid Community Benefit Grant Program awarded

\$414K+ through **57** grants that funded **49** organizations.

\$60.8 million – **\$7.3 million**
Community Benefit Property tax exemption

= \$53.5 million Total net Community Benefit

Community Health Success Stories



In 2025 Reid Health Community Engagement distributed

22 AEDs

to organizations across our service area.

Supported by Reid Health Community Benefit and Reid Health Foundation

\$5,000

was provided to Gleaner's Food Bank of Indiana to support Gleaner's providing free produce to partners in Fayette, Franklin, Union and Wayne County.

4,200+ served

and 1/3 of all food distributed in these counties is produce.

Supported by Reid Health Community Benefit and Reid Health Foundation



Reid Health partners with the American Foundation for Suicide Prevention to serve our communities by providing resources, connection, and healing. In 2025,

more than 500 people were impacted

through several community events surrounding mental health and suicide prevention and support.



What is 340B?

The 340B program - passed by Congress in November 1992 - requires pharmaceutical manufacturers to provide front-end discounts on covered outpatient drugs purchased by specified government-supported facilities that serve the nation's low-income and other vulnerable patient populations.

This program generated about \$8.6 million in annual savings for Reid Health, allowing the financial flexibility to supplement mission critical services that operate at a financial loss - such as outpatient behavioral health and county ambulance services.

Without these 340B savings, these services would be in jeopardy, possibly creating a care gap for these vulnerable populations.

Because of 340B, we're able to supplement programs like

**Ambulance
Services**



**Outpatient
Behavioral Health**

340B savings play a critical role in extending financial assistance to our patients. In 2025, Reid Health's Financial Assistance Program provided
\$26.8 million
in reduced cost care for those who qualified.



County Ambulance Services



2025: **3,977** | **4,458**
Emergency 911 calls | Interfacility transfers

	2019	2025
Ambulances:	3	13
Calls for service:	720	8,435

Average cost of ambulance

\$320K + \$150K = \$470K
Vehicle Equipment

Lifespan of ambulance
2-4 years
(200 - 250K miles)

Reid Health EMS Training Institute instructors provide training and education for: Certified emergency medical technician (EMT) and licensed paramedic. Graduates are prepared to be first responders with job opportunities in Reid's service area.



2024-2025 Paramedic Program Graduation • August 14, 2025

This program is supported by Reid Health Foundation.



Education is Economic Development



Reid Health
Educational
opportunities

200+

Job shadowing or internship
experience each year

300+

Clinical rotations for
college students

18

Residency
physicians

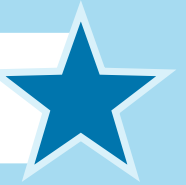


Vision Corner: A Rural Alliance Zone (RAZ) 32 Project

The most visible of the programs that have come out of the efforts of RAZ 32 is the **Vision Corner** project in Union City, Indiana, which houses a **healthcare pathways program** open to students in Randolph County school districts.

A Reid apprenticeship program allows students to earn high school and college credit while getting paid.

**Reid Health is one of the first hospitals
in the state to offer this program!**



**Vision Corner gives students the foundation
to live and work in East Central Indiana.**

Vision Corner is supported by Reid Health Community Benefit.

\$3.5 million annual investment in education

Reid Health Certified Athletic Trainers make a meaningful impact in our communities. Often serving as the first line of treatment for student-athletes, Athletic Trainers provide a wide range of care. These include preventive exercises and routines, injury evaluations, and follow-up care with treatment and rehabilitation. They also assist in return-to-play decisions and serve as a referral source for additional imaging and diagnostic service.

Reid Health provides Certified Athletic Trainers for 9 high schools.

Centerville, Connersville, Hagerstown, Lincoln, Northeastern, Richmond, Seton Catholic, Union City, and Winchester. An Athletic Trainer is also provided for one National Association of Intercollegiate Athletics (NAIA) division college.



Reid Health awards **\$375K+**

In community and dependent scholarships and employee tuition reimbursement each year.

Reid Health School of Radiologic Technology

Reid Health's radiography program educates students in a hospital environment. Upon graduation and passing the American Registry of Radiologic Technologists certification examination, our graduates can work in General Radiography (X-ray).

420+ Graduates

16-20 Enrolled students each year

\$25-\$26/hr.

Average starting pay for radiology school graduates

100%

Job placement rate over the past 10 years

Greater than

85%

Reid-employed Registered Technologists are graduates of the program.



Reid Health Foundation supports the Reid Health School of Radiologic Technology.

\$1.4 million goes to our **K-12** partners.

Athletic Trainers are state licensed, nationally board certified, and have an orthopedic skillset to gauge muscle, ligament, and bone health.

Reid Athletic Trainers are present at practices and home games throughout each season to ensure the well-being of the athletes.



2K+

Student-athletes served in 2024

Up to

22

athletic programs during fall, winter, and spring seasons across the school districts.

Reid Health Foundation supports the Athletic Trainer Program at Reid Health.





<p>★ AWARDS & RECOGNITION ★</p>	<p>America's 250 Best Hospitals 2024 - 2026</p>	<p>ACS Verified Level III Trauma Services</p>
<p>Designated Pediatric Ready Emergency Department</p>	<p>AHA Rural Hospital of Excellence in Innovation</p>	<p>Certified Primary Stroke Center</p>

Rural Healthcare by the numbers

\$44,386,025*

Uncompensated care
(total charity care, bad debt,
and underpayment from public
programs excluding Medicare)

**Includes \$26,762,330 in Financial Assistance*

Data from 2024 IRS 990

<p>77% Reid's patient base on government- sponsored plans (Medicaid/Medicare)</p>	<p>1.01% Operating margin <i>Data from 2025 unaudited financial statements</i></p>	<p>\$8.6 million Approximate annual 340B benefit</p>	<p>42 miles Distance from Reid to the next closest organization that provides similar services</p>
--	---	---	---

Source: Financial assistance and uncompensated care; 2024 IRS 990. Disproportionate Share Hospital percentage; 2024 Medicare Cost Report. Operating margin; 2024 internal financial statements.