

# SASOLWAX LC Spray 30 G

# SASOLWAX LC Spray 30 G-EF



SASOL

Technical data sheet

## Description

In Sasol's continuous strive to improve the Fischer-Tropsch wax process to reduce the carbon footprint, Sasol has developed a further improved GTL-based Fischer-Tropsch wax with lower carbon emissions.

Thanks to Sasol Chemicals' innovative production process, the micronized products SASOLWAX LC Spray 30 G and SASOLWAX LC Spray 30 G-EF offer superior performance while achieving up to 32 % reduction in Product Carbon Footprint (PCF) vs Sasol's class-leading grades SASOLWAX Spray 30 G and Spray 30 G-EF.

With SASOLWAX LC Spray 30 G and SASOLWAX LC Spray 30 G-EF, inks, paints and coatings manufacturers can produce high-quality products for surface protection and modifications while reducing the PCF of their products. Sasol's model for calculating PCFs for its wax value chain has undergone a critical third-party review and complies with ISO 14040 & ISO 14044, ISO 14067 compliant with the TfS PCF Guideline\*, an international standard that outlines the requirements and guidelines for quantifying the carbon footprint of products throughout their life cycle. To further reduce the carbon emissions, low carbon electricity, generated by cleaner sources with little or no carbon emissions, is used in the wax grinding process.

## Applications

- Architectural coatings
- Can coatings
- Inks
- Powder coatings
- Wood coatings

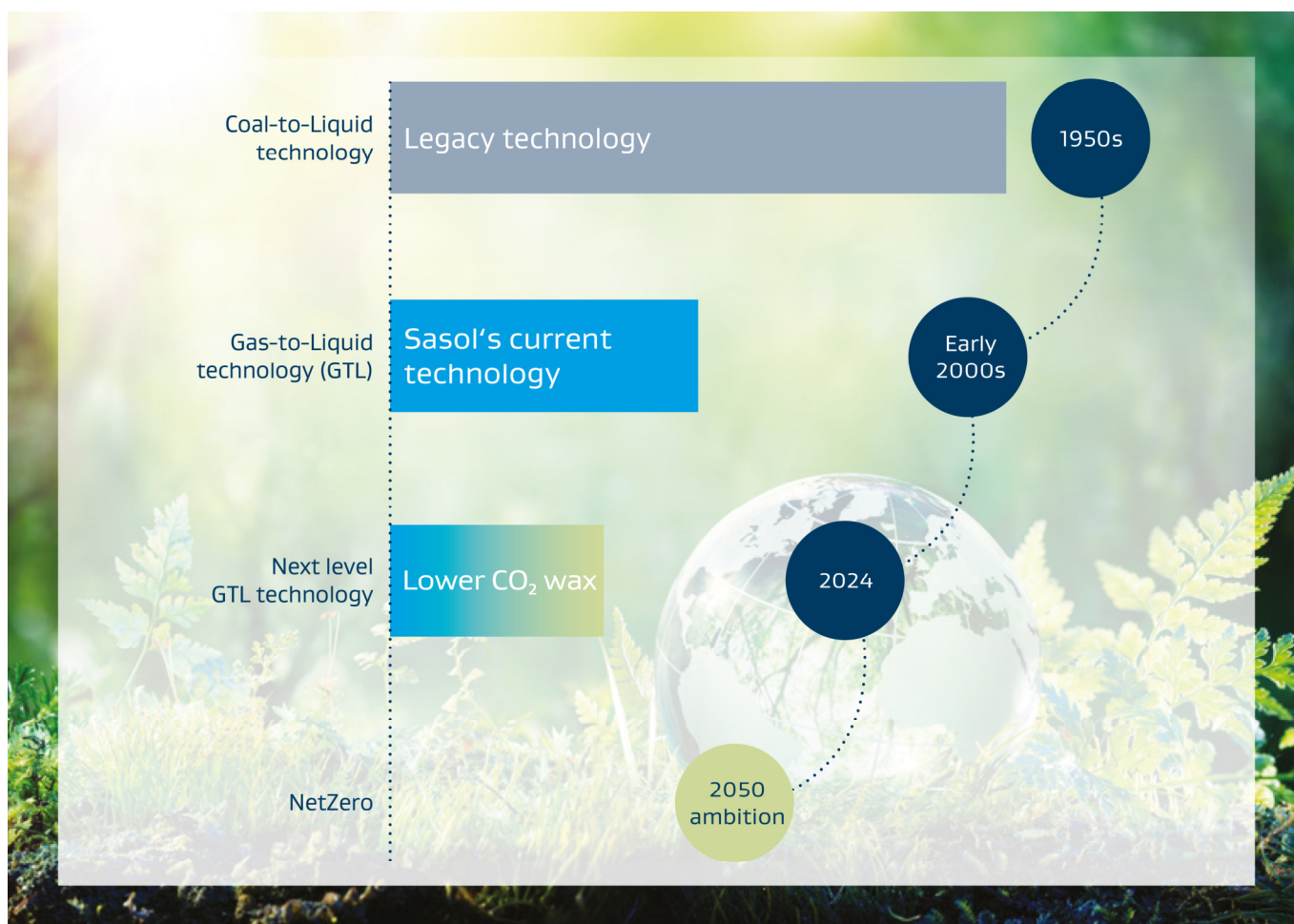
## Characteristic values

	SASOLWAX LC Spray 30 G	SASOLWAX LC Spray 30 G-EF	Unit
Color	> +15	> +15	Saybolt
Congealing point	96–100	96–100	°C
Drop melting point	112	112	°C
Penetration at 25°C	1 max.	1 max.	1/10 mm
Penetration at 65°C	20 max.	20 max.	1/10 mm
Particle size, d50	5-7	4-5	µm
Particle size, d90	14 max.	10 max.	µm



\*except data quality rating

## CO<sub>2</sub> footprint – cradle to gate



## Further information

Data on material safety, transport classes, toxicology, biodegradability and regulatory compliances can be obtained from the safety data sheet (SDS) and regulatory information sheet (RIS). Specification data as well as information on packaging can be obtained from the corresponding product information.

## Don't see what you are looking for?

Sasol Chemicals offers a wide range of products and formulations for the inks, paints, coatings and adhesives market, such as fatty and oxo alcohols, glycol ethers, acetates, ketones, alcohols, polyethylene glycols, nonionic and anionic emulsifiers, wetting additives, paraffins, GTL Fischer-Tropsch waxes, and acrylic monomers.

## CONTACT US

[www.chemicals.sasol.com](http://www.chemicals.sasol.com)

**Sasol Chemicals**  
Inks, Paints, Coatings and Adhesives

### Source reference: Sasol

Sasol is a registered trademark of Sasol Ltd. Product trademarks displayed in this document are the property of the Sasol Group of companies except where it is clear from the context that not. Users of this document are not permitted to use these trademarks without the prior written consent of their proprietor. All rights not expressly granted are reserved. Reference to trademarks used by other companies is neither a recommendation nor should it give the impression that products of other companies cannot be used.

Disclaimer: The information contained in this document is based on Sasol's knowledge and experience at the time of its creation. We reserve the right to make any changes to this document or the products described therein as a result of technological progress or developments. This information implies no liability or other legal responsibility on our part including with regard to existing third-party patent rights. In particular no guarantee or warranty of properties in the legal sense is implied. The customer is not exempted from the obligation to conduct careful inspection and testing of incoming products. All our business transactions are governed exclusively by our General Business Terms.