

Improving safety and connectivity in Alphington

The Alphington Link

May 2024

Information update

We're investing \$9.1 million to develop and deliver a safe and direct walking and bike riding link for the Alphington community – The Alphington Link.

The Alphington Link will improve safety and connectivity to 660km of walking and bike riding paths across Melbourne.

We've updated our plans for Alphington Link to better reflect the community's preference for a more environmentally sensitive design.

Background

We've been working through detailed planning and design to deliver this important link for the local community.

In 2018, we commenced community engagement on the project to inform the technical development of plans, designs, and options.

Wider community consultation took place on the proposed designs between 8 December 2021 and 31 January 2022.

Feedback from this consultation helped develop the designs to ensure the Alphington Link reflects the community's needs.

The community told us they want a design that is sensitive to the environment, blends into the landscape and minimises construction impacts.

Since our last update, we've carried out extensive planning and development to understand the impact of the proposed Alphington Link bridge design.

Upon further investigation, we found that building a walking and bike riding path at ground level instead of a bridge would save trees and have less impact on the landscape.

The walking and bike riding path will blend better into the local landscape, and the construction will be faster, meaning less impact on residents and the golf club.

The path will still safely connect people from Farm Road to the Darebin Creek Trail via Latrobe Golf Club, removing the need to use busy Heidelberg Road to access the trail.

The updated path design

The new three-metre-wide walking and bike riding path will follow the same route as the previous bridge design, from Farm Road to the Darebin Creek Trail through the Latrobe Golf Course.

Bike riders and pedestrians will be protected, and golfers who want to use the practice greens will have access.

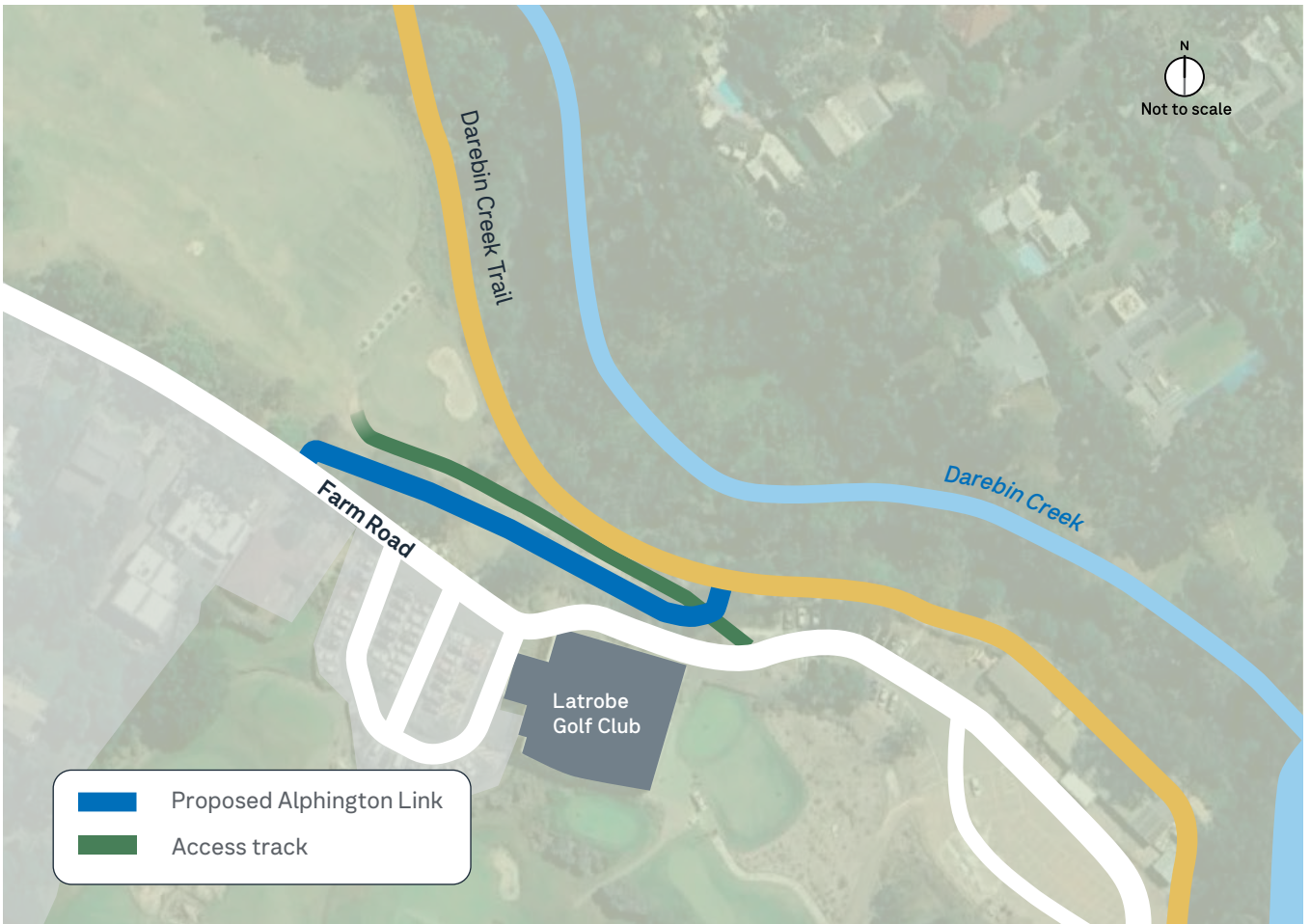
The new design will include landscaping sensitive to the local area to ensure it blends with the environment.

About the project

The Department of Transport and Planning is investing \$9.1 million to plan and develop a safe and direct bike riding and walking link for the Alphington community – The Alphington Link.

The new off-road path will provide a 120-metre link to the Darebin Creek Trail and access to over 600km of bike riding and walking paths across Melbourne.

The link will start from Farm Road and connect in with the Darebin Creek Trail, ensuring the local community will no longer need to use busy Heidelberg Road to access the trail.



Map showing the proposed location for the Alphington Link

The link will include a new walking and bike riding path that will safely take bike riders and pedestrians through Latrobe Golf Club.

Benefits of the Alphington Link

Improving walking and bike riding connections that enable more Victorians to walk or get on their bike for everyday trips, supports the climate change pledge of 25% active transport mode share by 2030.

Walking and bike riding paths benefit a broad demographic, including families, schoolchildren, older people, and people with disabilities.

Next steps

We'll work with Latrobe Golf Course and local residents while we finalise designs for the ground-level walking and bike riding path. Construction is expected to begin mid-2026.

Find out more

For more information visit the VicRoads website and search 'Alphington Link' or call **13 11 71** (TTY 13 36 77, Speak and Listen 1300 555 727).