

Nepean Highway, Station Street and McLeod Road intersections

Community survey – feedback report

July 2024

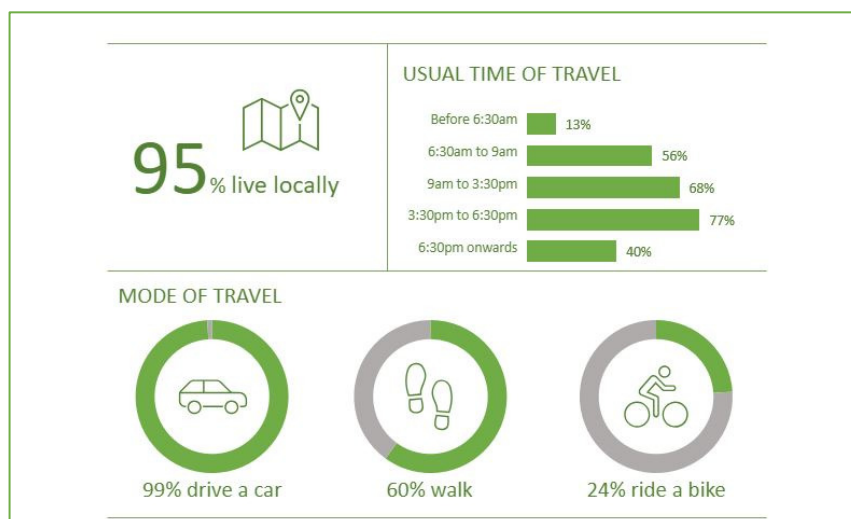
Information update

In February 2024, we sought feedback from the community on their use and experience of the intersections of Nepean Highway, Station Street and McLeod Road in Carrum.

Who we heard from

The survey was open between 9 - 25 February 2024 for Victorians who had used the intersections over the previous three months.

We heard from 1749 people, with most respondents (95%) living locally and travelling by car (99%) through the intersections. The evening peak (3:30pm – 6:30pm) was the most common time to drive through the intersections. Around 60 per cent of respondents also walked through the intersections, while 24 per cent rode bikes. There was some crossover between modes of travel.



What we heard

- The community views the removal of the Station Street level crossing as largely positive, with vehicles no longer getting stuck waiting for trains, and improved access to major roads such as Nepean Highway.
- Creation of The Promenade and foreshore redevelopment is also viewed very favourably by the community.
- However, survey respondents raised concerns about the present intersection arrangement, including:
 - **The proximity of the two intersections** – being so close, drivers can see two sets of traffic signals, which can be confusing.
 - **Shared ‘through’ and ‘turning’ lanes** – through traffic can be held up by vehicles waiting to turn, for example from Station Street turning into McLeod Road.

- **Traffic light sequencing** – some movements do not get adequate ‘green time,’ contributing to increased congestion.
- **Signage and linemarking** – not always clear for drivers approaching the intersections.
- **Aldi carpark entry/exit** – viewed as contributing to congestion and impacting safety for drivers finding it difficult to select a gap when entering or exiting the store carpark.
- **Closure of Eel Race Road to Nepean Highway** - although outside the area we are investigating, this closure was raised as impacting traffic flow and safety at the Nepean Highway, Station Street and McLeod Road intersections.

Suggested improvements:

The community suggested a number of adjustments to address the identified issues, including:

- Increasing the number of dedicated turning lanes where possible to help reduce congestion.
- Reconfiguring traffic light sequencing to improve traffic flow and reduce congestion.
- Implementing measures to address the ‘see through effect’, caused when multiple sets of lights are visible across intersections.
- Making signage and linemarking clearer to assist drivers choosing the correct lane when approaching the intersections.
- Addressing access to the Aldi car park entrance to help reduce congestion and improve safety.
- Increasing crossing times to improve pedestrian safety.

We would like to thank everyone who participated in the survey and provided valuable feedback about their experience using these intersections.

Next steps

We will use the feedback from this survey to inform planning for future safety and/or operational improvements at the intersections. We are currently exploring options to address the concerns we have heard.

Please note this is an investigative study at this stage and funding for potential improvements would be considered in future funding programs.

Find out more

For more information, visit the VicRoads website and search ‘Nepean Highway, Station Street and McLeod Road community survey’.

Call: 13 11 70

Email: DOTroadprojects@transport.vic.gov.au