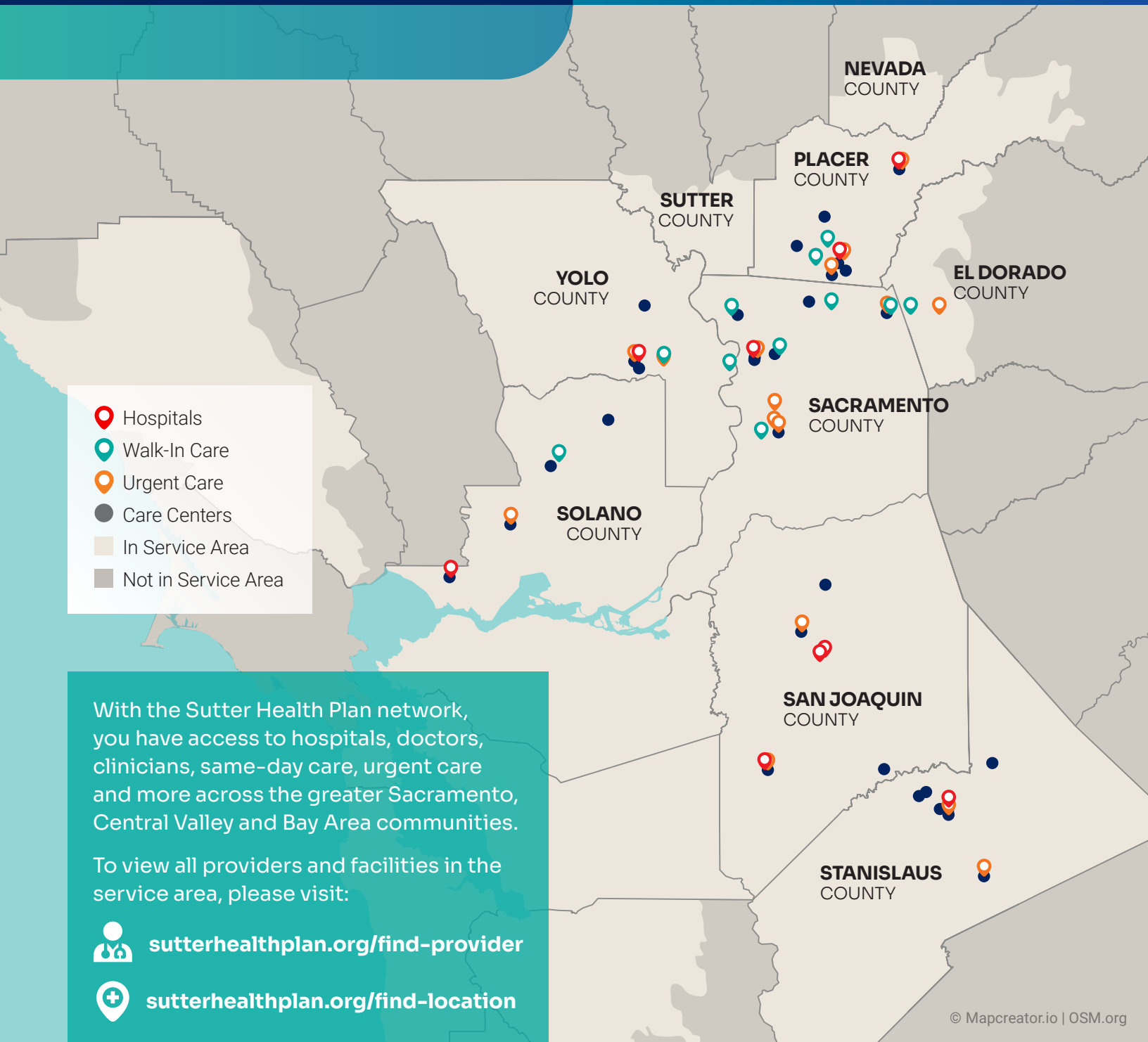
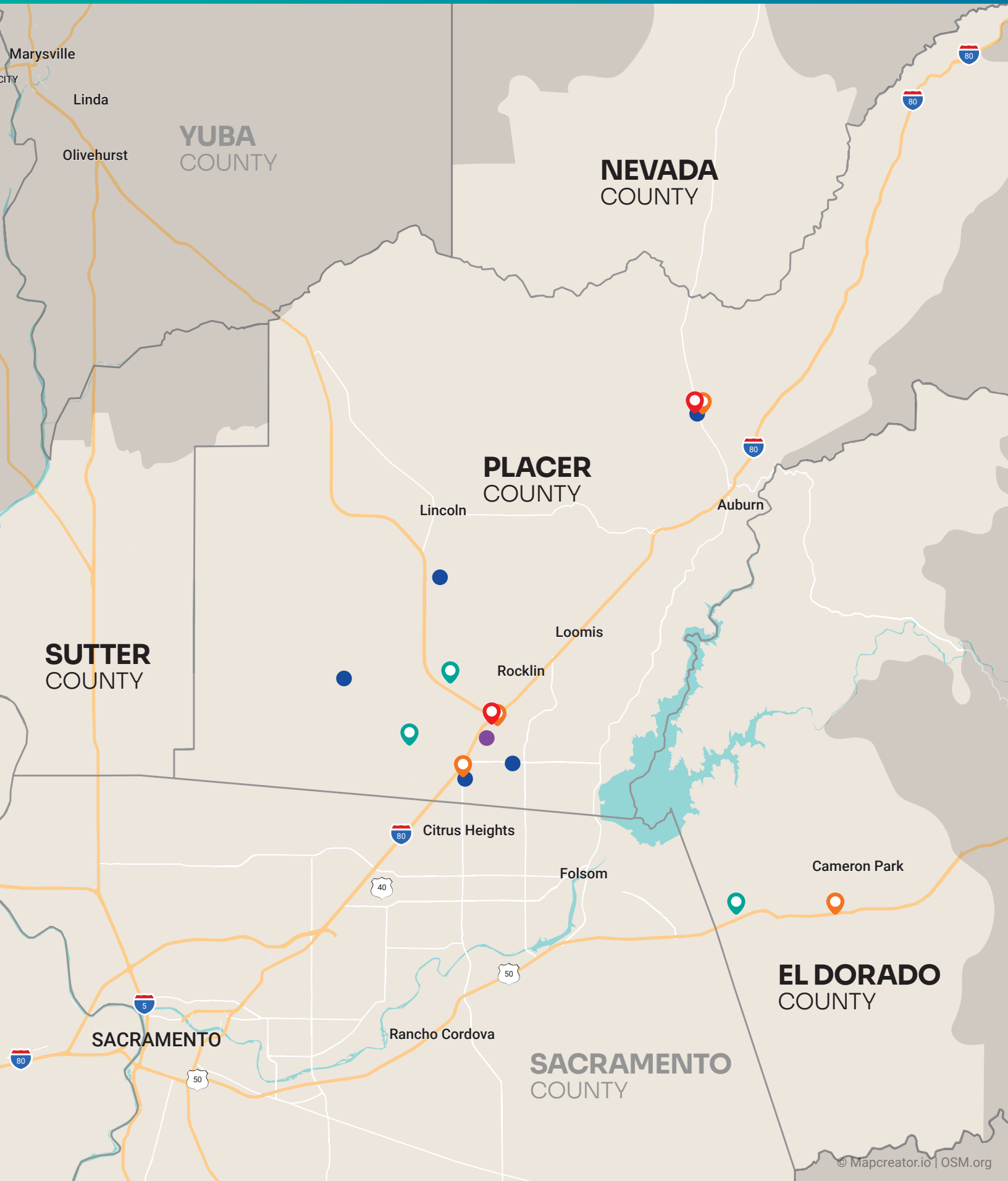


# In Your Community

## Valley Area



# El Dorado, Nevada, Placer and Sutter Counties\*



## Legend

- Hospitals
- Walk-In Care
- Urgent Care
- Sutter Independent Physicians Care Centers
- Sutter Medical Group Care Centers

## Affiliated Medical Groups

### Sutter Independent Physicians

### Sutter Medical Group

When you enroll, you and your covered dependents select a primary care physician (PCP) and their medical group, who work together to manage your healthcare needs. Your PCP will refer you to specialty care, X-rays, lab work, and other services as needed to help keep you healthy.

## Care Centers

You have access to conveniently located care centers that provide a wide variety of services. These may include primary care, specialty care, lab and X-ray — all under one roof.

### Sutter Independent Physicians

Sunrise Avenue Care Center  
729 Sunrise Ave.  
Roseville, CA 95661

### Sutter Medical Group

Auburn Sierra Medical Office  
11795 Education St.  
Auburn, CA 95602

Sutter Medical Plaza Lincoln  
685 Twelve Bridges Dr.  
Lincoln, CA 95648

Sutter Medical Plaza North Sunrise  
568 North Sunrise Ave.  
Roseville, CA 95661

Sutter Medical Plaza Roseville  
3100 Douglas Blvd.  
Roseville, CA 95661

West Roseville Care Center  
2050 Blue Oaks Blvd.  
Roseville, CA 95747

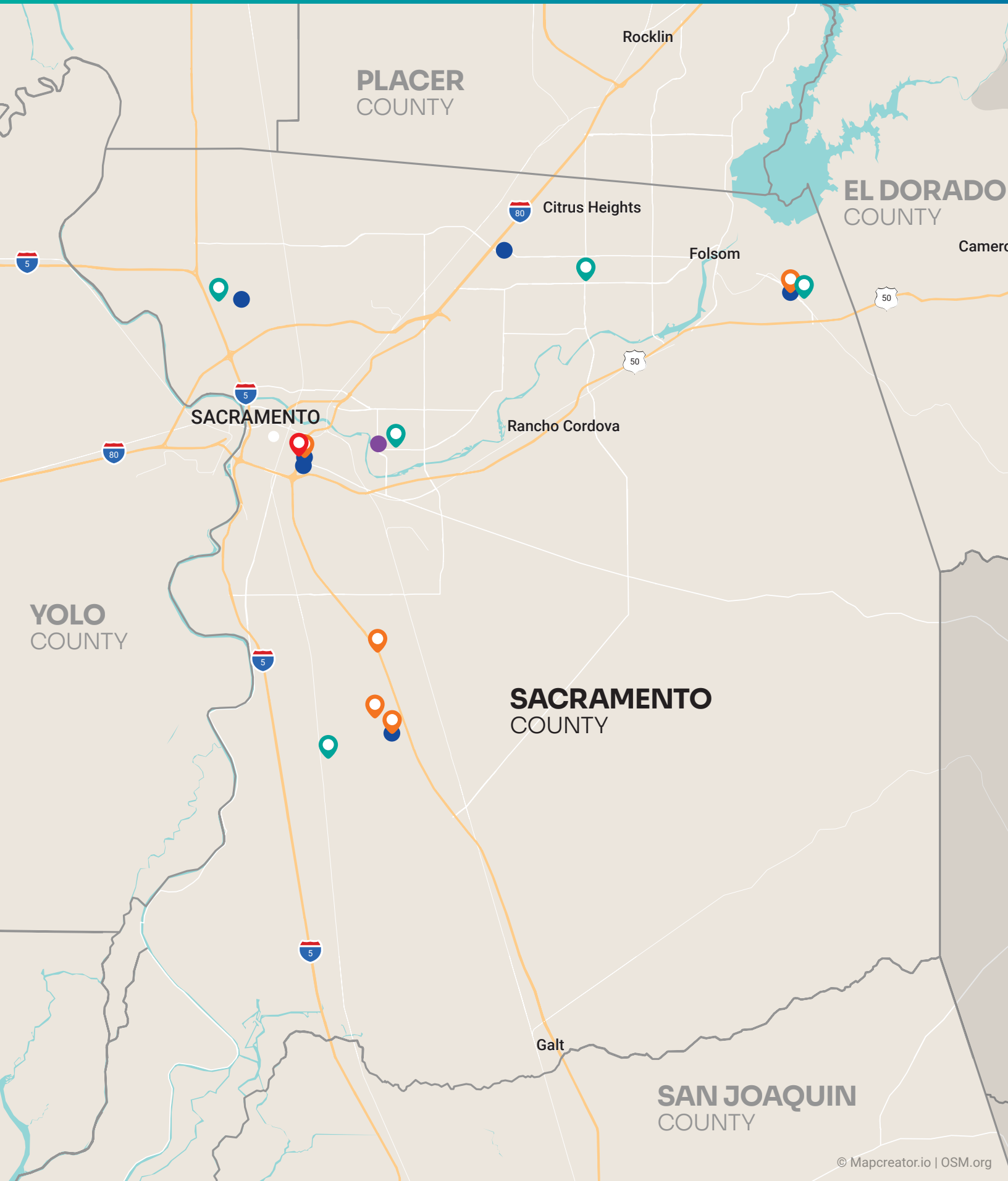
## Hospitals

**Sutter Auburn Faith Hospital**  
11815 Education St.  
Auburn, CA 95602

**Sutter Roseville Medical Center**  
One Medical Plaza Dr.  
Roseville, CA 95661

\* Partial counties

# Sacramento County



## Legend

- Hospitals
- Walk-In Care
- Urgent Care
- Sutter Independent Physicians Care Centers
- Sutter Medical Group Care Centers

## Affiliated Medical Groups

### Sutter Independent Physicians

### Sutter Medical Group

When you enroll, you and your covered dependents select a primary care physician (PCP) and their medical group, who work together to manage your healthcare needs. Your PCP will refer you to specialty care, X-rays, lab work, and other services as needed to help keep you healthy.

## Care Centers

You have access to conveniently located care centers that provide a wide variety of services. These may include primary care, specialty care, lab and X-ray — all under one roof.

### Sutter Independent Physicians

Pediatric Medical Associates of Sacramento  
650 Howe Ave.  
Sacramento, CA 95825

### Sutter Medical Group

Alhambra Medical Office  
1201 Alhambra Blvd.  
Sacramento, CA 95816

Greenback Oaks Professional Business Park  
5765 Greenback Ln.  
Sacramento, CA 95841

Sutter Medical Plaza Elk Grove  
8170 Laguna Blvd.  
Elk Grove, CA 95758

Sutter Medical Plaza Folsom  
2575 East Bidwell St.  
Folsom, CA 95630

Sutter Medical Plaza Natomas  
2951 Benefit Way  
Sacramento, CA, 95834

Sutter Medical Plaza Sacramento  
1625 Stockton Blvd.  
Sacramento, CA 95816

## Hospitals




### Sutter Medical Center, Sacramento

2825 Capitol Ave.  
Sacramento, CA 95816

# San Joaquin County



### Legend

-  Hospitals
-  Urgent Care
-  Sutter Gould Medical Foundation Care Centers

### Affiliated Medical Groups

#### Sutter Gould Medical Foundation

When you enroll, you and your covered dependents select a primary care physician (PCP) and their medical group, who work together to manage your healthcare needs. Your PCP will refer you to specialty care, X-rays, lab work, and other services as needed to help keep you healthy.

### Care Centers

You have access to conveniently located care centers that provide a wide variety of services. These may include primary care, specialty care, lab and X-ray — all under one roof.

#### Sutter Gould Medical Foundation

Kettleman Care Center  
1335 S Fairmont Ave.  
Lodi, CA 95240

Milvia Care Center  
2505 W Hammer Ln.  
Stockton, CA 95209

N Wilma Care Center  
521 N Wilma Ave.  
Ripon, CA 95366

Tracy Care Center  
445 W Eaton Ave.  
Tracy, CA 95376

### Hospitals

**Dameron Hospital**  
525 W Acacia St.  
Stockton, CA 95203

**St. Joseph's Medical Center**  
1800 N California St.  
Stockton, CA 95204

**Sutter Tracy Community Hospital**  
1420 N Tracy Blvd.  
Tracy, CA 95376

# Solano County



## Legend

- Hospitals
- Walk-In Care
- Urgent Care
- Sutter Medical Group Care Centers
- Sutter Medical Group - Solano Care Centers

## Affiliated Medical Groups

### Sutter Medical Group

### Sutter Medical Group - Solano

When you enroll, you and your covered dependents select a primary care physician (PCP) and their medical group, who work together to manage your healthcare needs. Your PCP will refer you to specialty care, X-rays, lab work, and other services as needed to help keep you healthy.

## Care Centers

You have access to conveniently located care centers that provide a wide variety of services. These may include primary care, specialty care, lab and X-ray — all under one roof.

### Sutter Medical Group

Sutter Medical Plaza Dixon  
125 N Lincoln St., Ste. G  
Dixon, CA 95620

### Sutter Medical Group - Solano

Sutter Fairfield Medical Campus  
2720 Low Ct.  
Fairfield, CA 94534

Sutter Medical Plaza Vacaville  
770 Mason St.  
Vacaville, CA 95688

Sutter Medical Plaza Vallejo  
100 Hospital Dr., Ste. 200  
Vallejo, CA 94589

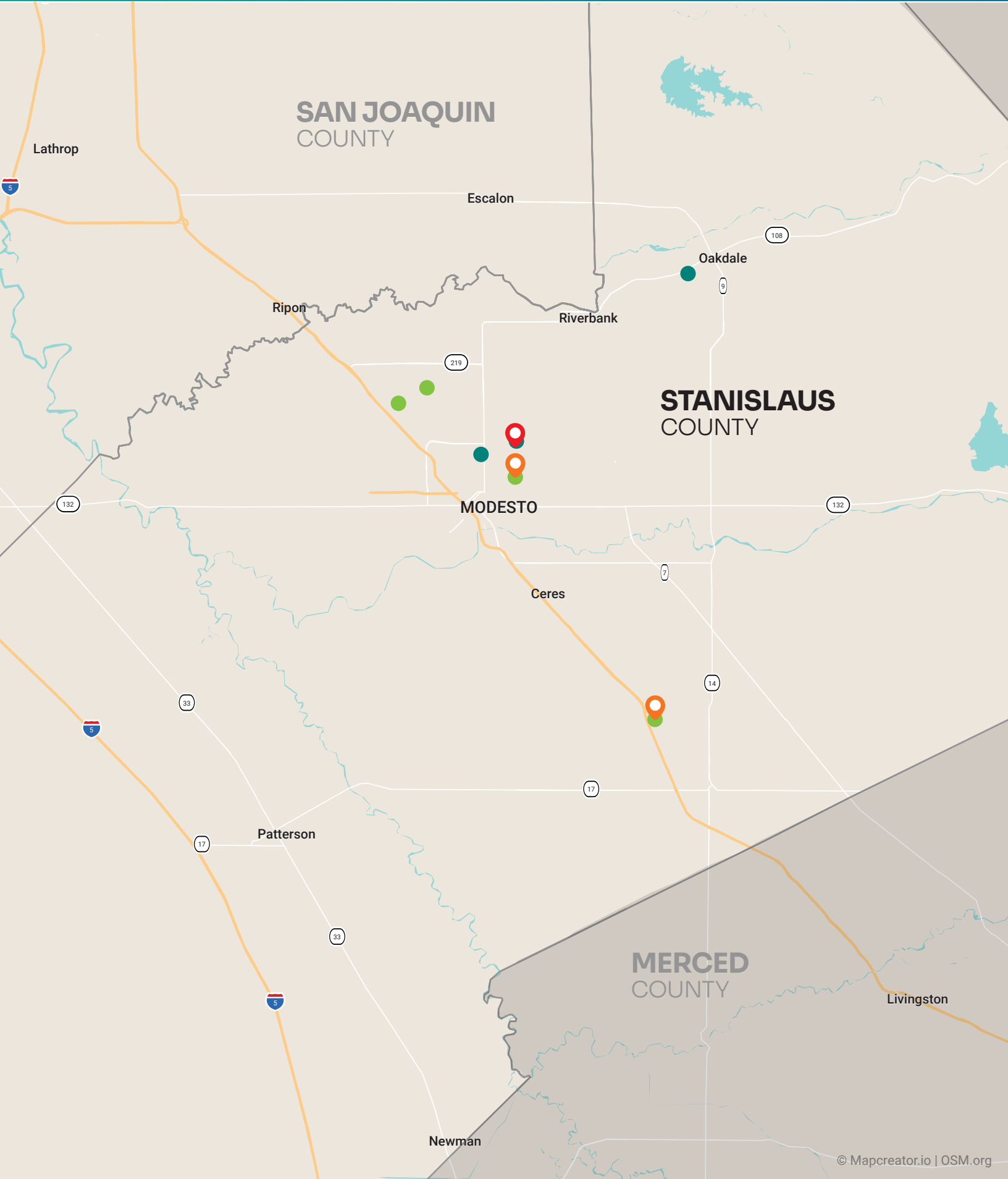
## Hospitals

### Sutter Solano Medical Center

300 Hospital Dr.  
Vallejo, CA 94589



# Stanislaus County



## Legend

- Hospitals
- Urgent Care
- Sutter Gould Medical Foundation Care Centers
- Sutter Gould Medical Foundation Aligned\* Care Centers

## Affiliated Medical Groups

### Sutter Gould Medical Foundation

When you enroll, you and your covered dependents select a primary care physician (PCP) and their medical group, who work together to manage your healthcare needs. Your PCP will refer you to specialty care, X-rays, lab work, and other services as needed to help keep you healthy.

## Care Centers

You have access to conveniently located care centers that provide a wide variety of services. These may include primary care, specialty care, lab and X-ray — all under one roof.

### Sutter Gould Medical Foundation

Pediatric and Adolescent Care Center  
1144 Coffee Rd.  
Modesto, CA 95355

Dale Road Care Center  
3612 Dale Rd.  
Modesto, CA 95356

Coffee Road Care Center  
600 Coffee Rd.  
Modesto, CA 95355

Florida Avenue Care Center  
1541 Florida Ave.  
Modesto, CA 95350

Turlock Care Center  
3100 W Christoffersen Pkwy.  
Turlock, CA 95382

### Sutter Gould Medical Foundation Aligned\*

Family Health Care Medical Group of Modesto  
1320 Celeste Dr.  
Modesto, CA 95355

Oakdale Family Doctors  
1425 W H St., Ste. 200  
Oakdale, CA 95361

Valley Oak Pediatric Associates  
4120 Prescott Rd.  
Modesto, CA 95356

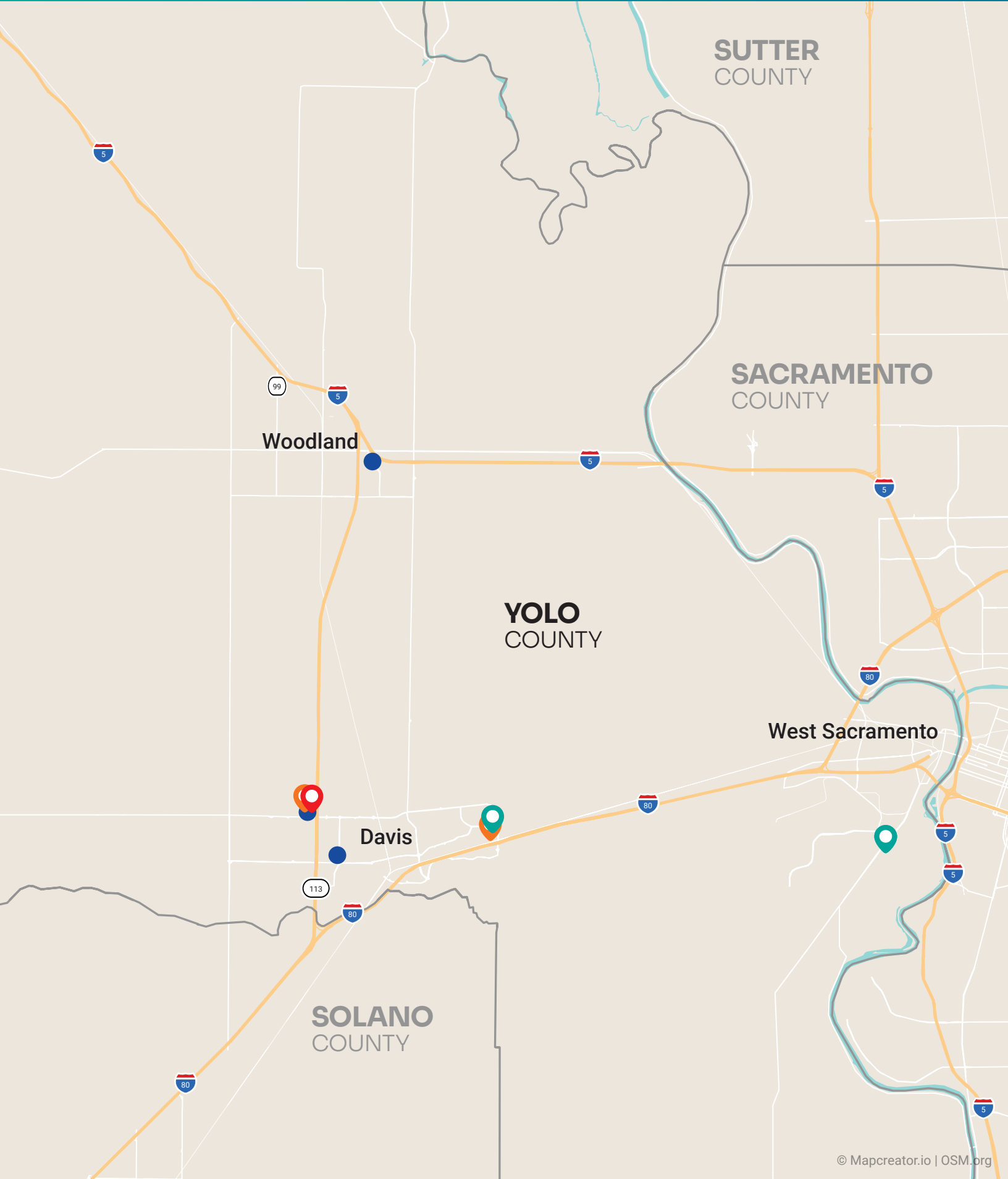
## Hospitals

### Memorial Medical Center

1700 Coffee Rd.  
Modesto, CA 95355

\* Aligned providers have a contractual relationship with Sutter Gould Medical Foundation to offer care to Sutter Health Plan members.

# Yolo County



## Legend

- Hospitals
- Walk-In Care
- Urgent Care
- Sutter Medical Group Care Centers

## Affiliated Medical Groups

### Sutter Medical Group

When you enroll, you and your covered dependents select a primary care physician (PCP) and their medical group, who work together to manage your healthcare needs. Your PCP will refer you to specialty care, X-rays, lab work, and other services as needed to help keep you healthy.

## Care Centers

You have access to conveniently located care centers that provide a wide variety of services. These may include primary care, specialty care, lab and X-ray — all under one roof.

### Sutter Medical Group

Anderson Road Care Center  
635 Anderson Rd.  
Davis, CA 95616

Sutter Place Care Center  
2030 Sutter Place  
Davis, CA 95616

Sutter Medical Plaza Woodland  
475 Pioneer Ave., Ste. 400  
Woodland, CA 95776

## Hospitals

### Sutter Davis Hospital

2000 Sutter Place  
Davis, CA 95616

# Accessing Care



## Nurse Advice Line

855-836-3500

The Sutter Health Plan Nurse Advice Line is available 24/7 to help answer questions about medical problems. Registered nurses can help you determine the right level of care for your health needs.



## Video Visits

You have access to video visits through your My Health Online (MHO) account for most of your healthcare needs, from routine to complex health issues..

- **With a PCP**

Members age 3 months and older can book video visits with their PCP<sup>1</sup>. Please check with your PCP for availability.

- **With a Sutter Clinician**

Members age 18 months and older can book video visits with a Sutter clinician.

For more information visit, [sutterhealth.org/video-visits](https://sutterhealth.org/video-visits).



## Sutter Walk-In Care

In the Greater Sacramento Area, you have access to Sutter Walk-In Care for everyday health needs:

- Colds, flu and strep throat
- Allergies, ear and sinus infections
- Sprains and strains
- Flu shots and other immunizations

For a list of Sutter Walk-In Care locations near you, visit [sutterhealthplan.org/walk-in](https://sutterhealthplan.org/walk-in).



## Urgent Care

You have convenient access to urgent care services<sup>2</sup>, offering timely care for unforeseen illnesses or injuries requiring immediate attention, including:

- Mild to moderate asthma attacks
- Moderate injuries such as burns or breaks
- Moderate illnesses such as vomiting, fever and diarrhea

For a list of urgent care centers near you, visit [sutterhealthplan.org/urgent](https://sutterhealthplan.org/urgent).

<sup>1</sup> You can log in to your MHO account to see if your PCP offers video visits. If your provider doesn't participate in MHO or you're a new patient, please contact your PCP's office for video visit options.

<sup>2</sup> Coverage includes urgent care services at in-network facilities while in the Sutter Health Plan service area. Coverage also includes urgent care services at any facility when outside of the Sutter Health Plan service area.





Customer Service **855-315-5800**  
Visit **[sutterhealthplan.org](https://sutterhealthplan.org)**