

MEETINGS & EVENTS

會議與活動



FEAST (FOOD BY EAST)



FOOD BY EAST

True to its name, FEAST (Food by EAST) is a celebration of eating together and bonding over meals, offering a selection of diverse cuisines, ensuring you'll find your beloved comfort classics in a relaxed, all-day dining experience. Sit down for a meal, drop by for pick-up or even have your meal delivered nearby.

FEAST (Food by EAST) 店如其名，讓東隅的住客歡聚一堂享用美食，連結彼此，享受一系列精選多國美饌，讓你能在輕鬆的全日用餐體驗中找到能帶來愉悅感的美食。你可以選擇堂食、外賣，或者要求外送到附近地點。





Feeling like FEAST but can't stay for a bite?
Pre-order and pick-up fresh sandwiches,
breakfast, hot meals, and more when you
order through FEASTaway.

We can also deliver to Taikoo Shing, One
Island East or Taikoo Place free of charge.

想享用FEAST但沒有充足時間坐下用餐？可以
選擇透過FEASTaway 提前預訂新鮮三明治、
早餐、熱食等，並在指定時間自取。我們還提供
免費送餐服務至太古城、港島東中心或太古坊。

AT SUGAR

With an open outdoor area overlooking Victoria Harbour and a spacious indoor area complete with projector and sound system, Sugar can be shaped and enjoyed to your liking.

For every reason to celebrate, Sugar makes the perfect indoor-outdoor venue. Host a private brunch or a sunset banquet with picturesque views from 32 floors above Victoria Harbour.

Our team loves original ideas and unconventional celebrations, and is happy to help you create truly memorable events for 25 to 190 people.

Sugar提供開放的露天空間眺望維多利亞港景致，室內空間配備投影機和音響設備。我們能根據你的喜好及需要作出不同安排。無論各種歡聚慶祝場合，Sugar都是一個結合室內和室外的理想場地。你可以邀請親友來參加私人聚會，或伴隨著日落景致，舉辦宴會，在32樓一邊用餐，一邊欣賞維多利亞港如畫的景色。我們的團隊對打破傳統的創意慶典充滿熱情，我們樂意協助你打造出獨一無二、適合25人到190人的紀念性活動。

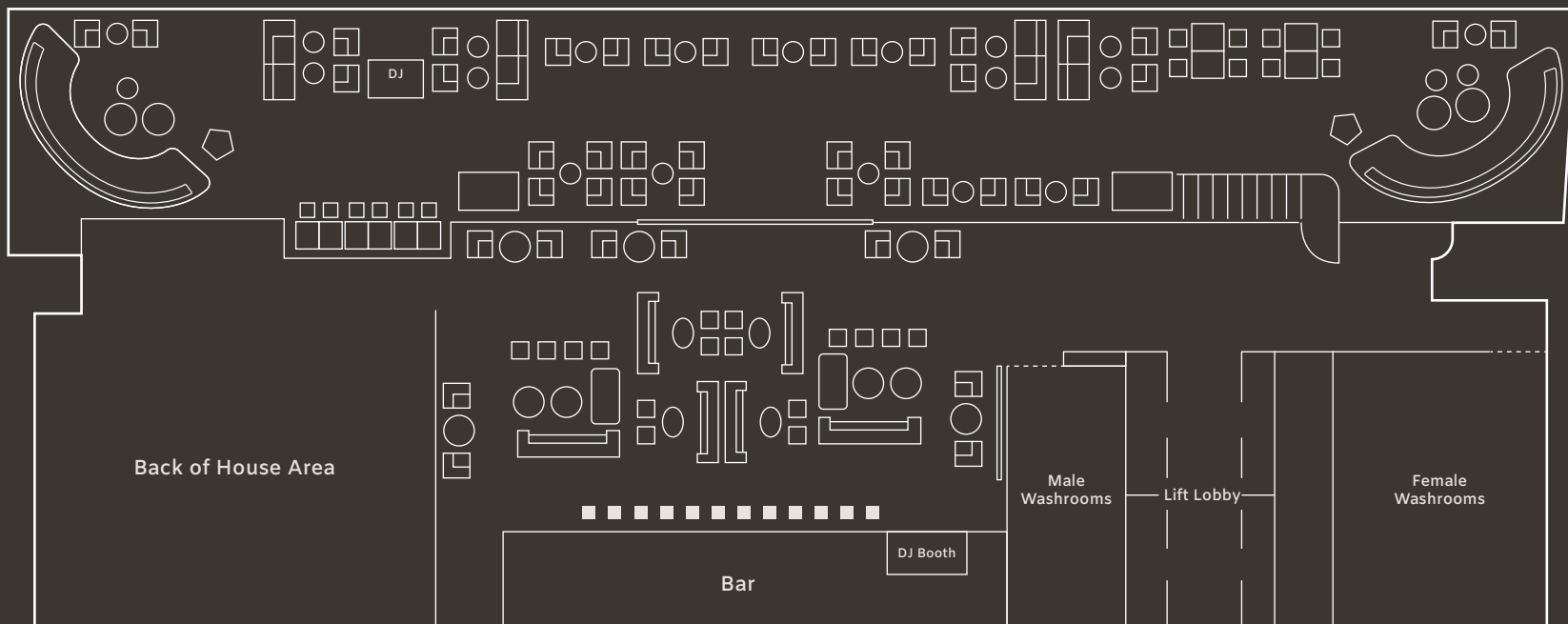




With over 3,000 square feet of indoor and outdoor space to work with, Sugar is a blank canvas that accommodates a diverse range of layouts and configurations. And when it comes to catering, our Events team is more than happy to help you create a custom menu sourced from EAST's restaurants and bars to fit your gathering.

Sugar有超過 3,000 平方呎的室內連室外空間，我們能根據你的喜好及需要作出不同安排。無論任何規模的活動及配置，Sugar都是你的理想場地。

在餐點方面，我們的活動團隊非常樂意配合你的需要定制專屬菜單，菜品精選自東隅的餐廳和酒吧，為你的聚會帶來不一樣的體驗。



Capacity Chart



Boardroom

Max. 32pax



Round table (indoor half-moon)

Max. 40pax



Classroom

Max. 36pax



Theatre

Max. 80pax

Indoor max. 46pax

Outdoor max. 116pax

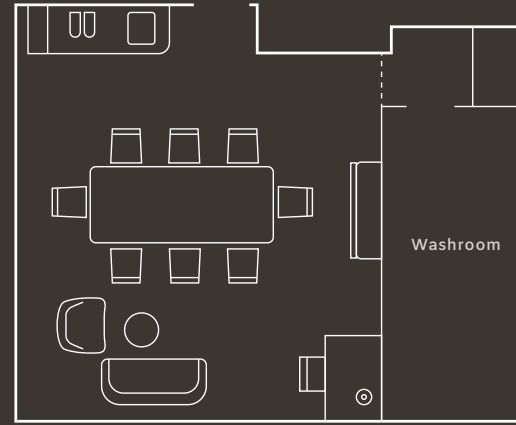
ELEVATED MEETINGS

會議 開出新高度

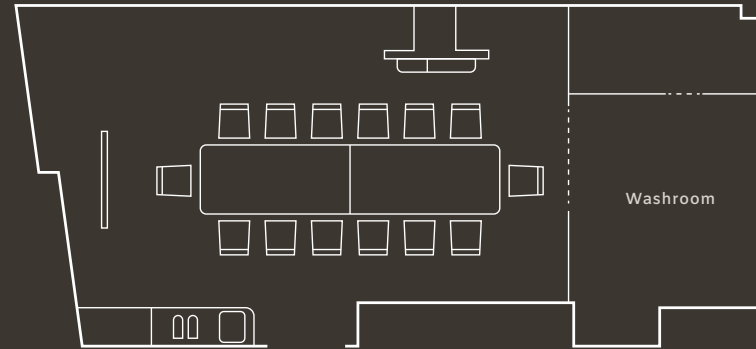
Our high-level boardroom Suites set the stage for key discussions and fresh perspectives with curated decor and sweeping city views for up to 12 people.

高層會議室套房，最多可容納 12 人。這個空間是討論及想法的理想場地。





Suite 3008/3009



Suite 3006



WEDDING WITH A VIEW

海景相伴的婚禮

Start your next big chapter on a sweet note at Sugar. Clear views of the sky and Victoria Harbour, a sprawling terrace, flexible interior space, and full planning services provide everything you'll need throughout your special day.

在Sugar，慶祝屬於你的新旅程。伴隨著晴朗的天空及璀璨的維港景致，這裡有廣闊的露台，靈活的室內空間，並提供周到的活動規劃服務，貼心滿足你在這特別日子所需的一切。

WEDDING WITH A VIEW



Event Enquiries 宴會查詢

+852 3968 3383 | events.ehk@easthotels.com

WHERE WE ARE

EAST Hong Kong

香港東隅

29 Taikoo Shing Road
Taikoo Shing, Hong Kong
香港太古城太古城道29號

T : +852 3968 3968

F : +852 3968 3988

E : info.ehk@easthotels.com

Follow us

關注我們 @easthk

@EASTHongKongHotel

GDS code SV
Sabre 112871
Apollo/Galileo 85274
Amadeus HKGEHH
Worldspan HKGEH



