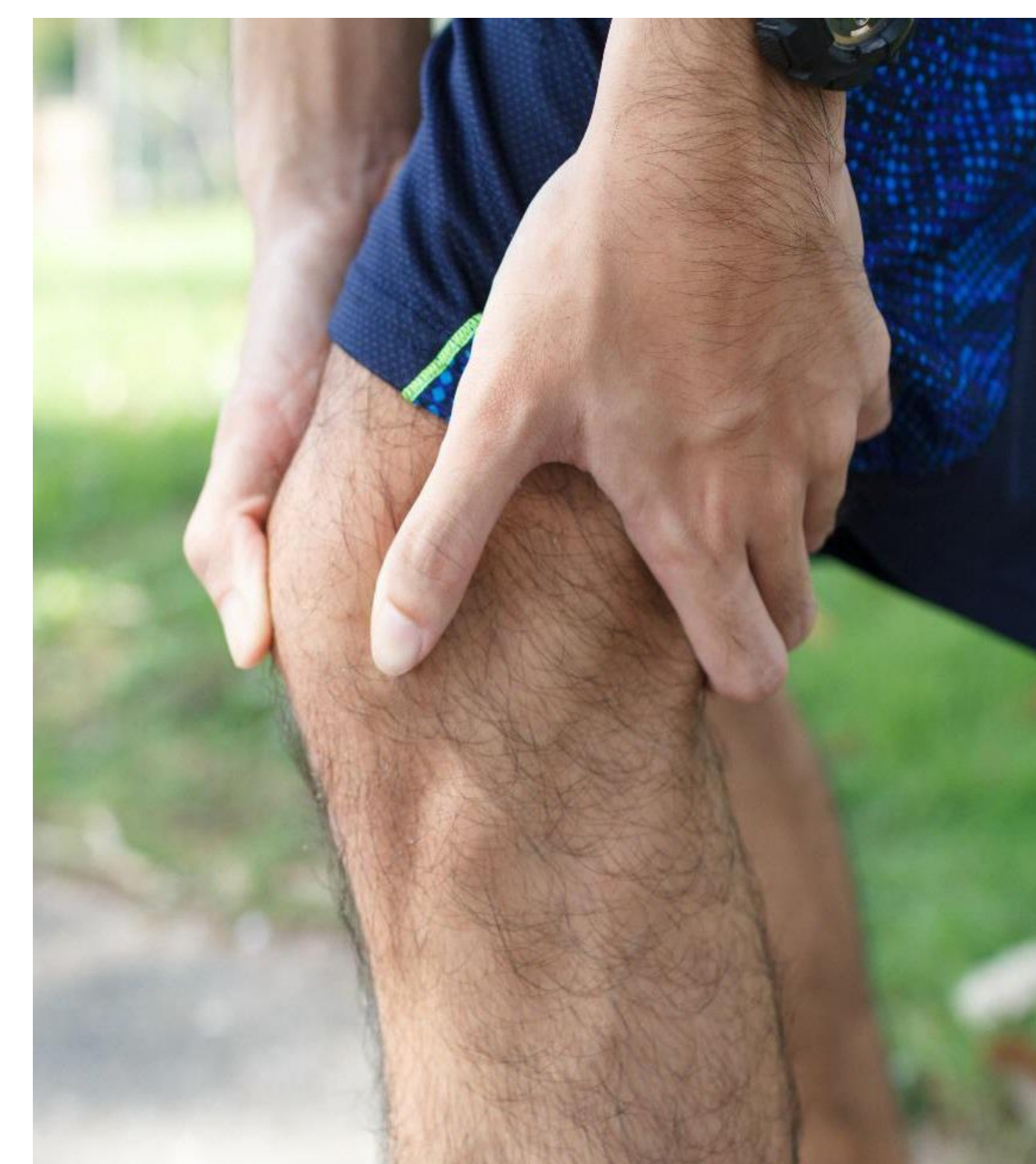


ACL TEAR

Twisted Your Knee While Playing Soccer?

If you have experienced the following:

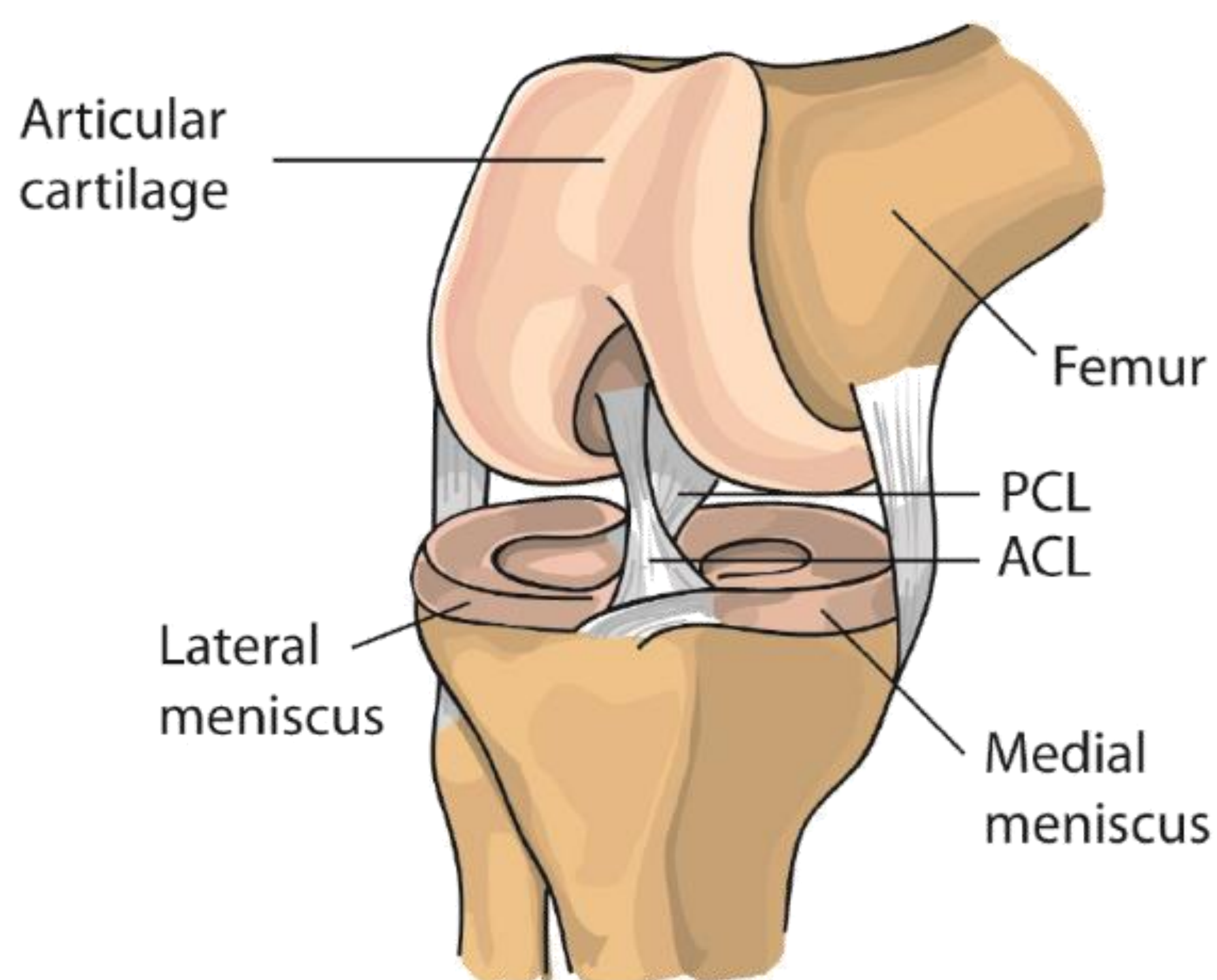
- Hearing a "pop" sound
- Developing swelling in your knee
- Significant pain that stops you from continuing to play



You *MAY* have an anterior cruciate ligament (ACL) tear!

You will usually need MRI to assess severity of the soft tissue injuries.

To find out more about this condition and treatment, scan the QR code below.



Scan the QR Code with your smart phone to access the information online or visit <https://nhghealth.com.sg>

Department of Orthopaedic Surgery
PECC-ORT-ED-2025-2071-v2

© Tan Tock Seng Hospital, Singapore 2026. All rights reserved. All information correct as of February 2026. No part of this document may be reproduced, copied, reverse compiled, adapted, distributed, commercially exploited, displayed or stored in a database, retrieval system or transmitted in any form without prior permission of Tan Tock Seng Hospital. All information and material found in this document are for purposes of information only and are not meant to substitute any advice provided by your own physician or other medical professionals.