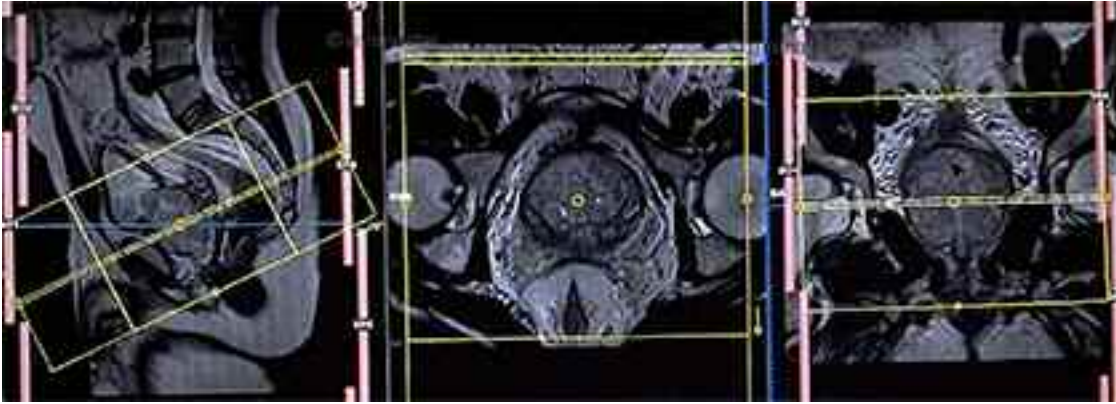


## What to Expect: MRI of the Prostate

To image the prostate, you will be placed on the MRI table and a special device called a coil will be inserted into the rectum directly under the prostate. You will feel mild discomfort (pressure) during the insertion, but should be comfortable during the exam. A balloon tip on the coil will be inflated to hold the coil in place. You will be given ear plugs to help reduce the noise the MRI machine makes, a call button to communicate with the MRI technologist and positioned in the MRI machine to start the exam. The MRI technologist will be in constant contact with you during the exam. A series of images will be taken of the prostate and surrounding area. During the exam, the MRI machine can be very loud. Contrast, which is a special MRI dye, will be given by IV near the end of the exam but you will be given ear plugs or head phones to listen to the music of your choice. The exam takes about 45 minutes to an hour. After all of the images are acquired, the coil balloon will be deflated and removed.

[Click here for information on how to make an appointment.](#)

## Exam Preparation



### The Day Before Your Exam

If you are to have a biopsy, obtain your antibiotics at the pharmacy and begin taking those as prescribed.

### Upon Arrival

- For your safety, the MRI technologist will ask you several questions.
- You will be asked to remove all jewelry and metals, including removable dentures, and piercings. You will be provided a locker to secure your belongings.
- We will have you remove all of your clothing, change into two gowns, offer the use of a restroom to empty your bladder, and then start an IV in your arm. The IV will be used to deliver an MRI dye that is used to highlight certain blood vessels and structures in the exam.

### After your exam

A radiologist will interpret your exam and notify your ordering healthcare provider with the results, who will then share the results with you at your follow up appointment or notify you by phone.