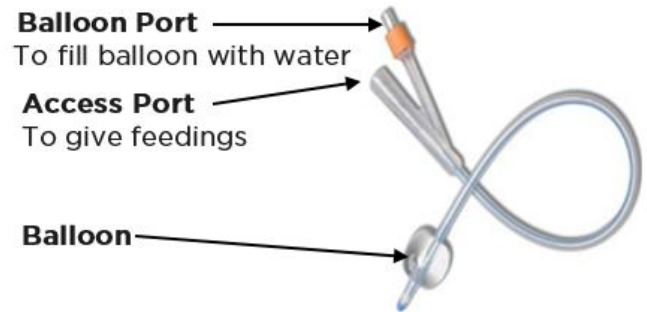


# Foley Gastrostomy Tube (G-Tube) Care Tips

## Foley G-Tube

The Foley G-Tube may be used first because of its small size. It will be slowly upsized to a larger G-Tube after about 4 to 6 weeks.

- The balloon end goes into the stomach
- The other end has an **access port** for feedings and a **balloon port** to inflate the balloon with water



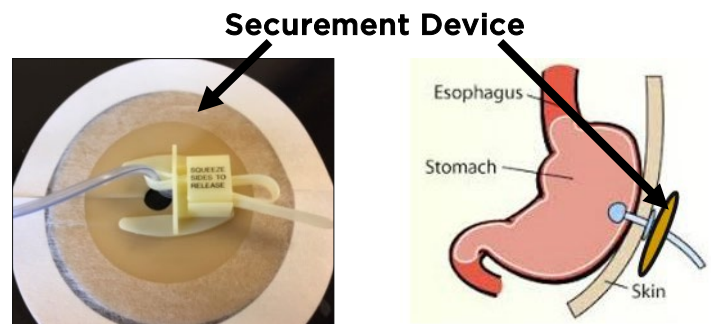
### Securing the Foley G-Tube requires:

- An inflated balloon inside the stomach
- A securement device that rests on the skin to hold the G-Tube in place

## Securement Device

An adhesive disk that sticks to the skin and holds the Foley G-Tube in place.

- Your health care team will show you how to change it, usually 1 to 2 times a week.
- The securement device will be ordered for you before you leave the hospital.



## Positioning After Surgery (For babies under 6 months)

Before your baby is positioned on their stomach, you must stop and disconnect the feeding.

- **After 4 days:** Baby may sit up or lay against your chest.
- **For weeks 2 to 3:** Baby may lay on tummy with a roll under upper chest for support.
- **At 4 weeks:** Baby may lay on tummy without roll.

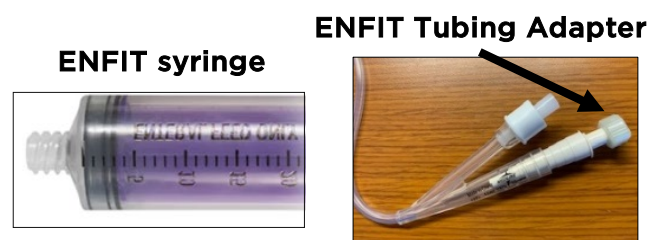
## Feeding With a Foley G-Tube

Before you go home you will be given a home feeding plan. Your surgery team will show you:

- How to give you child's feeding
- How to flush the G-Tube

The feeding bag tubing and syringes use the 'ENFIT' system to connect.

- The 'ENFIT' connection screws together and is only for G-Tube feedings
- Your feeding tubing and syringes will have this special connection
- The Foley G-Tube requires a special adapter to connect to the feeding



## Flushing the G-Tube

- Flush the G-Tube with 5ml of water **before** and **after** each feeding and medication.
- If you are not using the G-Tube every day, then flush at least one time a day with 5 to 10ml of water to prevent clogging.

# Foley Gastrostomy Tube (G-Tube) Care Tips

## General Care

### Site Care:

- Clean the G-Tube site with gentle soap and water when you change the securement device to keep the site from crusting.
- Look at the G-Tube site in between securement device changes and report any concerns.

### Bathing:

- Sponge bathe for the 1st month after G-Tube is placed.
- When given the OK by APN, you may give your child a regular bath in a tub.

### Securing:

- Secure the G-Tube under clothing if needed.
- Use one piece clothing or clothing that helps keep your child's hands from pulling on the G-Tube.

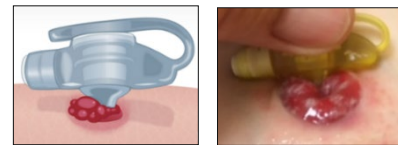
## G-Tube Leakage

A small amount of leaking around the G-Tube is normal and can be managed with daily cleaning. If feeding or medications are leaking out around the tube, or if the surrounding skin becomes red and irritated, call the Pediatric Surgery APN.

You can check and refill the water in the balloon if your care team has instructed you how to do it. Refilling the balloon to the correct amount of water may lessen leaking.

## Granulation Tissue

Granulation tissue is an “overgrowth” of tissue around the G-Tube. It develops when the body tries to repair itself at the G-Tube site. If it bleeds or there is a large amount of tissue, call the Pediatric Surgery APN for treatment options.



## Follow-up Appointments

- **2-week follow-up:** Your first visit after surgery may be an online or virtual visit.
- **4 to 6 weeks follow-up:** This will be an in-clinic visit to check the G-Tube site and do the first G-Tube up-sizing.
  - **1 to 2 weeks later:** This will be an in-clinic visit to up-size to a Button G-Tube.
- Follow-up visits will then be every 3 months in the clinic for G-Tube changes. Your surgery team may also teach you how to do this at home. If you are changing the G-Tube at home, your child should be seen in the clinic for a follow-up once a year.

## When To Call Pediatric Surgery With Concerns (773) 702-6169

- Changes at G-Tube site: **redness, warmth, a lot of drainage or leaking, bad odor, pain or skin breakdown**
- **Fever** over 101.5 degrees
- **Vomiting** (throwing up) or Diarrhea (watery stools)
- If you are not able to flush or use the G-Tube

## If Your Child's G-Tube Comes Out

**This is a serious problem that needs medical care right away because the G-Tube opening can close down quickly.**

- **Cover the site** with a clean dry gauze or Band-Aid
- **Get medical help** right away
  - During the day **Monday to Friday:** Call the Pediatric Surgery APN to get an urgent clinic appointment at (773) 702-6169
  - **During the night or on weekends:** Go to the Emergency Room for a replacement