

Solutions for protecting your business

Risk Engineering





Solutions beyond risk transfer

Zurich Risk Engineering

Zurich's Risk Engineers design and deliver risk services for customers across a range of industries and global locations. Tailored to your organization and working with you, we build a package of services to help you best manage your risks. In addition, we partner with specialist third parties to ensure you are working with the most in-depth expertise.

Expertise

Our in-house team of experts have industry, business and specific risk specialisms. We work with our underwriting and claims teams to understand customers' challenges and issues and work together on effective solutions.

Data-led

Taking a data-led approach, we provide risk insights, globally consistent peer benchmarking and claims analysis, which means our recommended actions are specific to your needs.

Our Technology

All of our customers can access our award-winning digital tools including My Zurich and Zurich Risk Advisor and our Remote Collaboration tool.

Training

We offer a number of training services catering for a range of organizational needs.

This guide details our available services and what benefits these have for your organization.

Our Risk Engineering Services

Business resilience

Find out how much resilience your business really requires – and how to build it, at no or little cost. Also, why lean yet resilient supply chains are more crucial than ever, and how to thrive in turbulent times.



[View factsheet](#)

Chemical, pharmaceutical, food and beverage

Learn how the risk landscape is evolving in the chemical/pharma/food/beverage industries – and how Zurich's tools and solutions can help companies manage their risk.



[View factsheet](#)

Climate change and natural hazard

Learn how Zurich's data-led insights and global expertise can help companies to manage risks related to climate change and natural hazards.



[View factsheet](#)

Construction

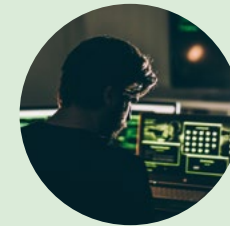
Read how Zurich deploys data, tools and industry insights to help construction companies protect their businesses, job sites and work crews.



[View factsheet](#)

Cyber

With cybercrime on the rise, this factsheet can help your organization develop a more robust risk mitigation strategy, build resilience and prevent computer-related losses.



[View factsheet](#)

Employers' liability

In this factsheet we reveal how employers can improve health and safety in the workplace, help prevent work-related illness and injury, and manage liability risk.



[View factsheet](#)

Fire: Protect your people and property

Facts and insights to help your company put in place an appropriate fire protection system and avoid fire-related losses.



[View factsheet](#)

Liability

Discover why companies struggle to navigate the highly complex area of legal liability, and why Zurich is an established leader in managing new and emerging risks.



[View factsheet](#)

Machinery breakdown

Although we all rely on machines, many businesses have gaps in their breakdown coverage. Find out how Zurich helps companies to identify their machine-based risks, protect against breakdown, and improve maintenance of critical equipment.



[View factsheet](#)

Marine

A deep dive into Zurich's tools and solutions for reducing marine risk, safeguarding cargo, and keeping supply chains flowing.



[View factsheet](#)

Motor fleet

Learn about Zurich's industry-leading solutions for motor risk assessment, coaching, training and driver behavior technology, and how we help businesses to develop and sustain a positive safety culture.



[View factsheet](#)

Powergen

Read about the unique challenges facing the energy industry today – and how Zurich uses global, data-driven insights to help companies navigate complex energy risks amid a rapidly evolving regulatory and environmental landscape.



[View factsheet](#)

Property

We outline a few common challenges in the area of commercial property risk, and how Zurich helps businesses protect their property using high-quality risk data.



[View factsheet](#)

Workers' compensation

Exploring why many companies lack a strong worker safety program – and are turning to Zurich for workplace-injury guidance, local regulation knowledge, and solutions to help lower claims.



[View factsheet](#)

Digital capabilities

Learn about Zurich's end-to-end digital solutions.

[My Zurich](#)



[Zurich Risk Advisor](#)



[View factsheet](#)

My Zurich is an intuitive and dynamic risk management centre, available to all of our customers globally and relevant to all sectors and lines of business. By drawing together real-time overviews of your whole portfolio, including all policies, claims and risk engineering actions, you can drill down to review specific details such as a single policy document.

This interconnectivity enables you to monitor:

Policy, invoice issuance and premiums by country or insurance programme;

The implementation status of insurance programmes;

Claims linked to particular policies;

Policy premiums in programme and local currencies; and

All documentation for download, including policies, invoices and certificates.

You can also review the complete claims history of your organisation, from a global overview right down to specific claims detail.

My Zurich also enables access to global Risk Engineering expertise and risk improvement actions. RIAs can come from our Risk Consultants or from your own use of Zurich Risk Advisor.



Zurich Risk Advisor



View factsheet



Zurich Risk Advisor is an online tool that allows you to self-assess your risk, implement improvement measures and monitor progress. Reports can be produced and disclosed to underwriters to support risk initiatives.

It is constantly evolving with new features coming online to support you through a range of self-assessment, insight and risk improvement tools. Advice is available within the tool to support you on a day to day basis.

Zurich Risk Advisor also supports you with:

Self- Risk Assessments

Zurich Risk Advisor includes a number of self assessment modules across all our services. Work your way through the same risk categories as our Risk Assessment, selecting the multiple choice answer that best fits your current standard. Choose the Risk Improvement Ideas (RII) that suit your organisation. Then run and share the Excel and PDF outputs to help demonstrate and improve your liability risks and claims defence. Monitor progress across your locations through My Zurich.

Risk Snapshots

You and your employees can dip in and out of these quick and easy to use tools. Simple yes or no answers linked to our Risk Insight guidance and Risk Improvement Ideas provide you with a powerful risk management tool written by our experts. Share your PDF reports with colleagues, locations or other stakeholders. Track your completion of RII via the application.

Remote Collaboration

If you need our opinion on a liability hazard or property risk, or you've implemented a Risk Improvement Action and want one of our Risk Engineers to see it, the remote collaboration function enables you and our Risk Engineer to discuss the matter and how to view it using your mobile device.



[My Zurich](#)



[View factsheet](#)



This is a general description of (insurance) services such as risk engineering or risk management services by Zurich Resilience Solutions which is part of the Commercial Insurance business of Zurich Insurance Group, and does not represent or alter any insurance policy or service agreement. Such (insurance) services are provided to qualified customers by affiliated companies of Zurich Insurance Company Ltd, including but not limited to Zurich American Insurance Company, 1299 Zurich Way, Schaumburg, IL 60196, USA, The Zurich Services Corporation, 1299 Zurich Way, Schaumburg, IL 60196, USA, Zurich Insurance plc, Zurich House, Ballsbridge Park, Dublin 4, Ireland, Zurich Commercial Services (Europe) GmbH, Platz der Einheit, 2, 60327 Germany, Zurich Management Services Limited, The Zurich Centre, 3000b Parkway, Whiteley, Fareham, Hampshire, PO15 7JZ, UK, Zurich Insurance Company Ltd, Mythenquai 2, 8002 Zurich, Switzerland, Zurich Australian Insurance Limited, ABN 13 000 296 640, Australia.

The opinions expressed herein are those of Zurich Resilience Solutions as of the date of the release and are subject to change without notice. This document has been produced solely for informational purposes. All information contained in this document has been compiled and obtained from sources believed to be reliable and credible but no representation or warranty, express or implied, is made by Zurich Insurance Company Ltd or any of its affiliated companies (Zurich Insurance Group) as to their accuracy or completeness. This document is not intended to be legal, underwriting, financial, investment or any other type of professional advice. Zurich Insurance Group disclaims any and all liability whatsoever resulting from the use of or reliance upon this document. Nothing express or implied in this document is intended to create legal relations between the reader and any member of Zurich Insurance Group.

Certain statements in this document are forward-looking statements, including, but not limited to, statements that are predictions of or indicate future events, trends, plans, developments or objectives. Undue reliance should not be placed on such statements because, by their nature, they are subject to known and unknown risks and uncertainties and can be affected by numerous unforeseeable factors. The subject matter of this document is also not tied to any specific service offering or an insurance product nor will it ensure coverage under any insurance policy.

This document may not be distributed or reproduced either in whole, or in part, without prior written permission of Zurich Insurance Company Ltd, Mythenquai 2, 8002 Zurich, Switzerland. No member of Zurich Insurance Group accept any liability for any loss arising from the use or distribution of this document. This document does not constitute an offer or an invitation for the sale or purchase of securities in any jurisdiction.

Zurich Resilience Solutions
173008028 update (12/21) TCL

